



**Allison Sheehe**  
Distribution Right of Way Supervisor

**PPL Electric Utilities Corporation**  
1801 Brookwood Street  
Harrisburg, PA 17104  
Tel. 484-781-4279  
ansheeche@pplweb.com

January 2, 2025

Ms. Rosemary Chiavetta, Secretary  
Pennsylvania Public Utility Commission  
P. O. Box 3265  
Harrisburg, PA 17105

Dear Secretary Chiavetta:

I am hereby requesting a one year time extension for Docket # A-2023-3042387 concerning an application by PPL Electric Utilities Corporation for the approval to alter the public crossing (518230L) where Walnut Street crosses at grade the tracks of Norfolk Southern Railway Company, in Columbia Borough, Lancaster County. Extension is being requested due to delays with scheduling Railroad Flaggers. Approval letter dated January 11, 2024 and original submission are included.

Should you have any questions please call me.

Sincerely,

Allison Sheehe  
Distribution Right of Way Supervisor

Enclosure



**COMMONWEALTH OF PENNSYLVANIA**  
PENNSYLVANIA PUBLIC UTILITY COMMISSION  
COMMONWEALTH KEYSTONE BUILDING  
400 NORTH STREET  
HARRISBURG, PENNSYLVANIA 17120

IN REPLY PLEASE  
REFER TO OUR FILE

January 11, 2024

A-2023-3042387

**TO ALL PARTIES OF RECORD**

Application of PPL Electric Utilities Corporation for approval to alter the public crossing (DOT 518 230 L) by the replacement of an existing utility pole where Walnut Street crosses, at grade, three (3) tracks of Norfolk Southern Railway Company located in Columbia Borough, Lancaster County.

To Whom It May Concern:

By application filed with the Commission on August 22, 2023, PPL Electric Utilities Corporation (PPL) seeks Commission approval to alter the public crossing (DOT 518 230 L) by the replacement of an existing utility pole where Walnut Street (Borough Road) crosses, at grade, three (3) tracks of Norfolk Southern Railway Company located in Columbia Borough, Lancaster County.

PPL proposes to install the new fifty (50) foot steel utility pole and transfer all existing aerial facilities to the new pole on the south side of the subject crossing within the joint right-of-way of Walnut Street and Norfolk Southern Railway Company. The installation will provide a vertical clearance of 30.9-feet to PPL's neutral wire, and a minimum vertical clearance of 22-feet as measured from the top of rail to the lowest attached (foreign utility) aerial facility.

The Commission hereby establishes its jurisdictional limits at the subject crossing as the area within the confines of the railroad right-of-way and the highway right-of-way.

In its application, PPL states that the proposed installation is necessary to support current and future loading conditions, and to provide continued utility services to the residents. PPL will be directed to perform the necessary installation, provide for maintenance and protection of highway and pedestrian traffic during installation and accept future maintenance responsibility for the facilities, at its sole cost and expense. The cost of the project is anticipated to be approximately \$25,000.

All work is to be performed in accordance with the revised plans entitled: "EXHIBIT A" consisting of one (1) sheet submitted to the Commission on December 19, 2023.

PPL served a copy of the original application and plans on Lancaster County, Columbia Borough, Norfolk Southern Railway Company, the Pennsylvania Department of Transportation, and Brightspeed. All parties of record were queried by letter dated September 11, 2023, and December 21, 2023 sent via email as to any objection to the subject application and revised plans. None of the parties have responded with any objection to the subject application or revised plans.

The Commission has exclusive jurisdiction in crossing alterations and is the final arbiter of any fees associated with a crossing application. Any conditions, including fees associated with a crossing application, must be approved by the Commission.

Upon full consideration of the matters involved, we find that a hearing is not necessary and that a Secretarial Letter may be issued approving the application.

The Commission issues this Secretarial Letter in accordance with Section 2702 of the Public Utility Code and finds that the alteration of the crossing is necessary and proper for the service, accommodation, convenience, or safety of the public.

The application of PPL Electric Utilities Corporation is approved as herein directed:

1. The caption of the subject proceeding is hereby revised as shown herein.
2. The public crossing (DOT 518 230 L) where Walnut Street crosses, at grade, three (3) tracks of Norfolk Southern Railway Company in Columbia Borough, Lancaster County be altered generally in accordance with the installation plans entitled: "EXHIBIT A" consisting of one (1) sheet provided to the Commission on December 19, 2023; which plans are made part hereof and are hereby approved except insofar as they may relate to the division of work, deletion of work, or the allocation of costs and expenses incident to the installation of the project.
3. PPL Electric Utilities Corporation, at its sole cost and expense, furnish all material and perform all work necessary to alter the crossing by the replacement of an existing utility pole within the joint right-of-way of the highway where Walnut Street crosses, at grade, three (3) tracks of Norfolk Southern Railway Company; all in accordance with the approved plans and this Secretarial Letter.
4. PPL Electric Utilities Corporation, at its sole cost and expense, furnish all material and perform all work necessary to establish and maintain any detours or traffic controls that may be required to properly and safely accommodate highway and pedestrian traffic during the time the crossing is being altered.
5. Any relocation of, changes in and/or removal of any adjacent structures, equipment or other facilities of any non-carrier public utility company or municipal authority, other than PPL Electric Utilities Corporation, which may be required as incidental to the alteration of the crossing, be made by said public utility company or municipal authority at its initial cost, and in such a manner as will not interfere with the alteration of the crossing; and such relocated or altered facilities thereafter be maintained by said public utility company or municipal authority, at its sole cost and expense.
6. Norfolk Southern Railway Company, at the sole cost and expense of PPL Electric Utilities Corporation, furnish all material and perform all work relating to its facilities which may be required as incidental to the performance of the proposed work and furnish any watchmen, flagmen, inspectors and/or engineering services that may be deemed necessary to protect the railroad's operations or facilities during the time the facilities are being installed.

7. PPL Electric Utilities Corporation, at its sole cost and expense, furnish all material and perform all work necessary to complete the remainder of the project, and any other ancillary features of the project, generally in accordance with the approved plans and this Secretarial Letter.

8. The alteration of the crossing be completed on or before January 31, 2025, and that on or before said date PPL Electric Utilities Corporation, report in writing the date of actual completion of the work to this Commission and certify to the parties of record and this Commission that the work has been satisfactorily completed in accordance with the approved plans and this Secretarial Letter.

9. PPL Electric Utilities Corporation, at its sole cost and expense, pay all compensation for damages, if any, due to owners of property taken, injured, or destroyed by reason of the alteration of the crossing in accordance with this Secretarial Letter.

10. All parties involved herein cooperate fully with each other so that during the time the work is being performed, vehicular, pedestrian and railroad traffic will not be endangered or unnecessarily inconvenienced, and so that the requirements of each of the parties will be provided for and accommodated insofar as possible.

11. PPL Electric Utilities Corporation cooperate with the non-carrier utilities involved, so that during the alteration of the involved crossing, the facilities of the non-carrier utilities will not be endangered or unnecessarily interrupted.

12. PPL Electric Utilities Corporation, at least seven (7) days prior to the start of work, notify all parties of record of the actual date on which work will begin.

13. Upon completion of the alteration of the crossing, PPL Electric Utilities Corporation, at its sole cost and expense, furnish all material and perform all work necessary thereafter to maintain the new utility pole and any ancillary facilities installed in accordance with the approved plans and this Secretarial Letter.

14. Upon completion of the alteration of the crossing, Norfolk Southern Railway Company, at its sole cost and expense, furnish all material and perform all work necessary thereafter to maintain its railroad facilities at the subject crossing, including the warning devices and all appurtenant equipment, and maintain at all times in a smooth and satisfactory condition the crossing surface located between the rails and for a distance of twenty-four (24) inches beyond the outermost rails; all in accordance with Part 8 of the Manual on Uniform Traffic Control Devices and this Secretarial Letter, and provide Columbia Borough at least ten (10) business days advance notice when performing any work as directed by this paragraph that may affect their facilities.

15. Upon completion of the alteration of the crossing, Columbia Borough, at its sole cost and expense, furnish all material and perform all work necessary thereafter to maintain the highway approach roadway of the subject crossing to points twenty-four (24) inches beyond each outside rail and in addition, maintain the grade crossing advance warning signs, pavement markings, and stop lines, if required; all in accordance with Part 8 of the Manual on Uniform Traffic Control Devices and this Secretarial Letter, and provide Norfolk Southern Railway Company at least ten (10) business days advance notice when performing any work as directed by this paragraph that may affect their facilities.

16. Upon completion of the work herein directed, and upon written request from any party of record, this proceeding be scheduled for a hearing at a time and place to be determined by the Commission, for the purpose of taking testimony upon the final allocation of any remaining costs incurred by the non-carrier utility companies and other matters relevant to this proceeding.

The Parties are reminded that failure to comply with this or any Order or Secretarial Letter in this proceeding may result in an enforcement action seeking civil penalties and/or other sanctions pursuant to 66 Pa. C.S. § 3301.

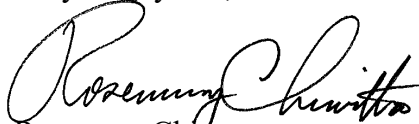
All formal documents must be filed with the Secretary of the Commission. Documents must be eFiled, mailed or hand delivered. All filings should be addressed to the Secretary, PA Public Utility Commission, 400 North Street, Harrisburg, PA 17120. The Commission will not accept documents delivered by fax or by e-mail. Parties are encouraged to file formal documents by eFiling with the Secretary of the Commission by opening an eFiling account through the Commission's website (the account is free of charge) and accepting eservice at <https://www.puc.pa.gov/filing-resources/efiling/>.

If your filing contains confidential material, you are required to file by overnight delivery to ensure the timely filing of your submission. There are certain filings that cannot be eFiled, such as filings containing confidential or proprietary material. These must be submitted to the Secretary by overnight delivery, priority, or certified mail to allow tracking of your filing.

If you are dissatisfied with the resolution of this matter, you may, as set forth in 52 Pa. Code §§ 1.31 and 5.44, file a Petition for Reconsideration from Staff Action (Petition) with the Commission within twenty (20) days of the date of this letter. The Petition shall be eFiled with the Secretary of the Commission or sent to: Secretary, PA Public Utility Commission, 400 North Street, Harrisburg, PA 17120, and must be filed within twenty (20) days, or if no timely request is made, the action will be deemed to be a final action of the Commission.

The Petition MUST include: (1) a written statement (divided into numbered paragraphs) outlining the reasons for the request; (2) the case docket number (it is provided for you at the top right-hand corner of this letter); (3) the party on whose behalf the petition is made; (4) a Certificate of Service on the other parties of record; and (5) a Verification with original signature in accordance with 52 Pa. Code § 1.36.

Very truly yours,

  
Rosemary Chivetta

Secretary

**BEFORE**  
**PENNSYLVANIA PUBLIC UTILITY COMMISSION**

---

In re: Application of PPL Electric Utilities for approval of the alteration of the crossing 518230L by replacing an existing pole where Walnut Street crosses at grade the tracks of Norfolk Southern, located in Columbia Borough in Lancaster County.

Application

Docket No. A-2023-3042387

To Pennsylvania Public Utility Commission:

1. The name and address of applicant are:

PPL Electric Utilities Corporation  
Two North Ninth Street  
GENN3  
Allentown, PA 18101

2. The name and address of the applicant's attorney are

Office of General Council  
Attn: Mallory Sweeney  
2 North 9<sup>th</sup> Street, GENTW3  
Allentown, PA 18101

3. PPL Electric Utilities wishes to replace the existing utility pole facility in Columbia Borough, Lancaster County, PA. The utility facility crosses Norfolk Southern Railroad

rails within the public right-of-way of Walnut Street. The above ground utility pole to be replaced is pole number 34793S25634.

4. The proposed construction will be a utility pole replacement located at Lat/Long 40.030566, -76.507259. The utility pole replacement will support aerial utility cables. Walnut Street intersects the railroad at grade. See attached Exhibit "A". The completion date for this project is August 1, 2024.

5. The public utilities, municipalities, corporations and property owners concerned in, or affected by, the crossing alteration are identified in Exhibit "B" attached hereto

6. The expected cost for the construction procedure is \$25,000. PPL Electric Utilities will pay all costs of construction of the utility pole replacement, as well as, be responsible for installing, maintaining and inspecting the facilities.

7. The alteration is necessary or proper for the following reasons: to support current and future loading conditions, to provide continued utility services to the residents .

Wherefore, applicant prays your Honorable Commission to approve the application:

  
Allison Sheehe (Aug 22, 2023 14:02 EDT)

(Signature of Applicant)

**§ 1.36. Verification.**

(a) Applications, petitions, formal complaints, motions and answers thereto containing an averment of fact not appearing of record in the action or containing a denial of fact shall be personally verified by a party thereto or by an authorized officer of the party if a corporation or association. Verification means a signed written statement of fact supported by oath or affirmation or made subject to the penalties of 18 Pa. C.S. §4904 (relating to unsworn falsification to authorities). If verification is required, notarization is not necessary.

(b) The Verification form should comply substantially with the following:

## VERIFICATION

I, Allison Sheehe, hereby state that the facts above set forth are true and correct (or are true and correct to the best of my knowledge, information and belief) and that I expect to be able to prove the same at a hearing held in this matter. I understand that the statements herein are made subject to the penalties of 18 Pa. C.S. § 4904 (relating to unsworn falsification to authorities).

Date: 08/22/2023



Allison Sheehe (Aug 22, 2023 14:02 EDT)

---

(Signature)

CERTIFICATE OF SERVICE

I hereby certify that I have this day served a true copy of the foregoing document upon the participants, listed below, in accordance with the requirements of § 1.54 (relating to service by participant).

ROW & Utility Division  
PennDOT Bureau of Design  
P.O. Box 3362  
Harrisburg, PA 17105-3362

Bightspeed  
Attn: Engineering/Permits  
1765 W Trindle Rd  
Carlisle, PA 17015

Office of Chief Counsel  
PennDOT  
P.O. Box 8212  
Harrisburg, PA 17105-8212

Engineering District 8-0  
Attn: Permit Office  
2140 Herr St  
Harrisburg, PA 17103

Lancaster County Courthouse  
Attn: Permitting/Public Works  
50 N Duke Street  
Lancaster, PA 17108

Columbia Borough Office  
Attn: Engineering/Permitting  
308 Locust Street  
#300  
Columbia, PA 17512

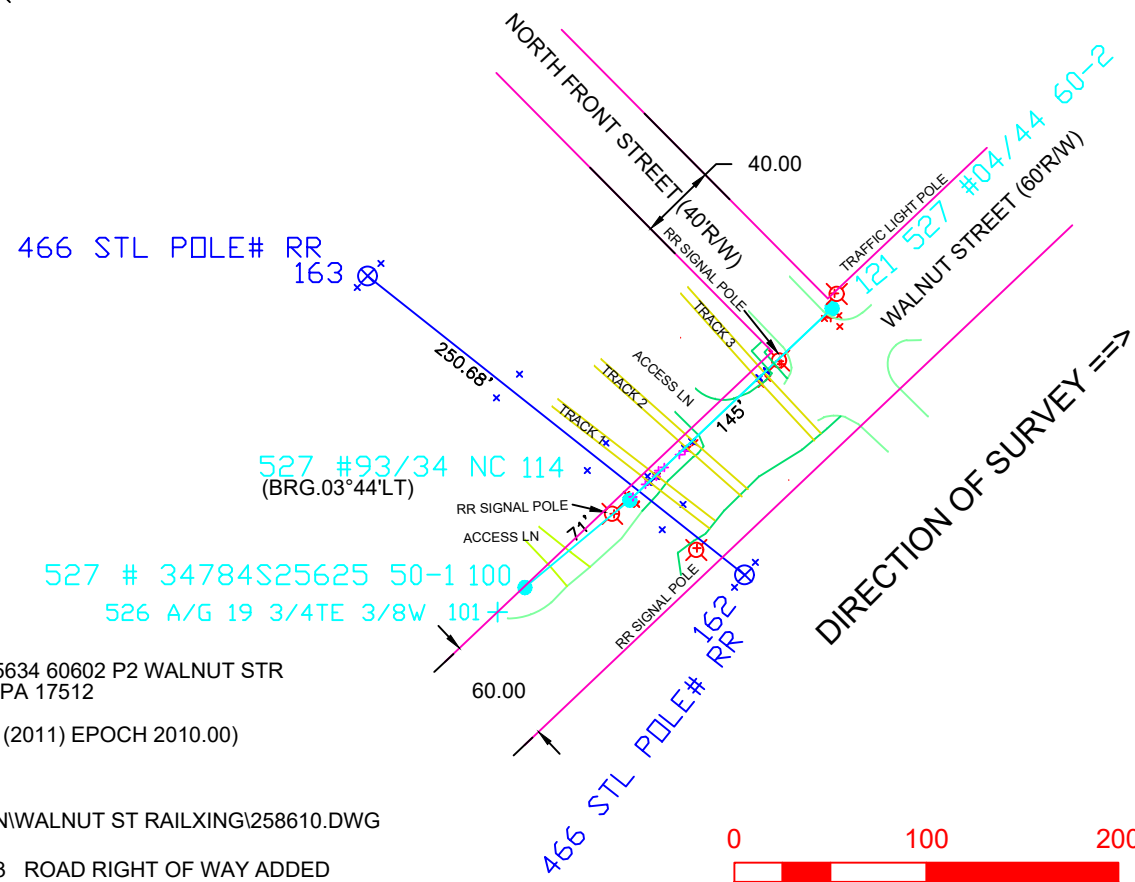
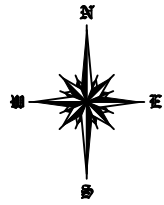
Norfolk Southern Railroad  
Attn: Engineering/Permitting  
650 W Peachtree Street NW  
Atlanta, GA 30308

Dated this 22nd day of August, 2023.

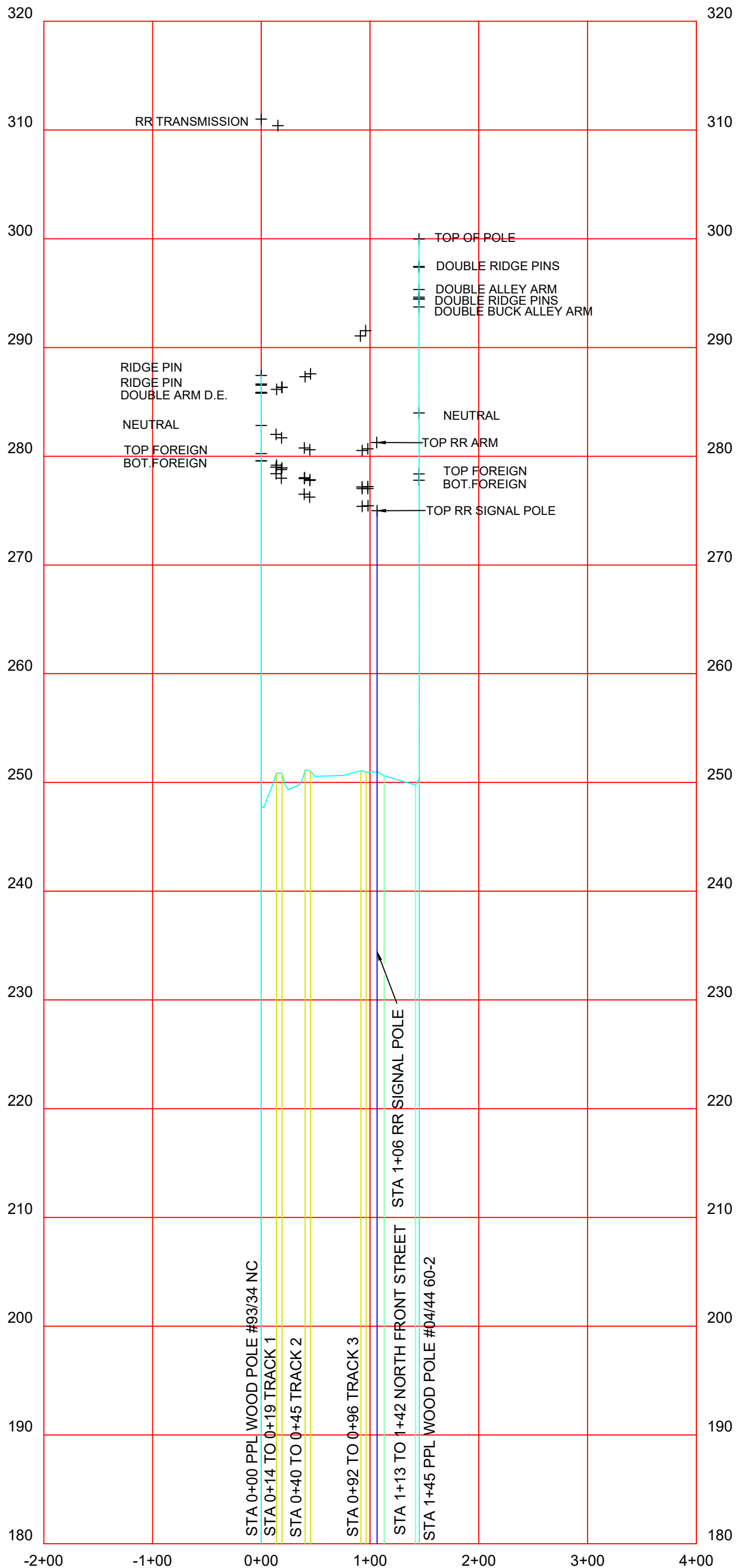


Allison Sheehe (Aug 22, 2023 14:20 EDT)

(Signature)



WO 12945663 CTAG OH 34793S25634 60602 P2 WALNUT STR  
41 WALNUT STREET, COLUMBIA PA 17512  
ER:258610  
COORDINATES: SPCS-83 (NAD83 (2011) EPOCH 2010.00)  
DATUM: NAVD-88 (GEOID09)  
SCALE: 1"=100'  
DATE: APRIL 25,2023  
G:\...HARRISBURG\DISTIBUTION\WALNUT ST RAILXING\258610.DWG  
PROFILE SCALE: AS NOTED  
REVISED DATE: AUGUST 21, 2023 ROAD RIGHT OF WAY ADDED



CL DISTRIBUTION PPL WOOD POLE #93/34 TO PPL WOOD POLE #04/44 RAIL ROAD CROSSING  
 HORIZONTAL SCALE: 1" = 100'  
 VERTICAL SCALE: 1" = 10'

## EXHIBIT "B"

The public utilities, municipalities, corporations, and property owners concerned in, or affected by, the crossing alteration are:

ROW & Utility Division  
PennDOT Bureau of Design  
P.O. Box 3362  
Harrisburg, PA 17105-3362

Brightspeed  
Attn: Engineering/Permits  
1765 W Trindle Rd  
Carlisle, PA 17015

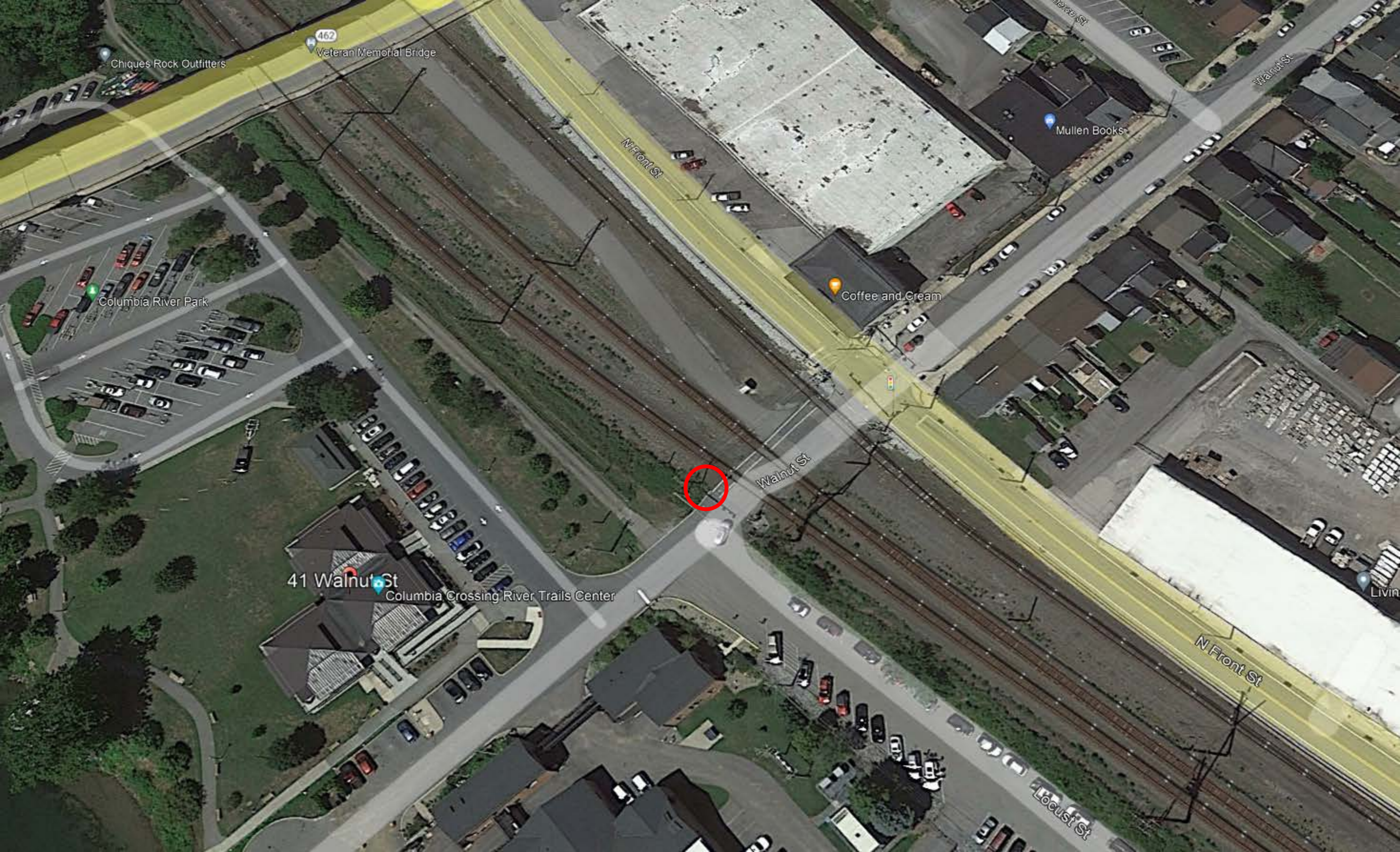
Office of Chief Counsel  
PennDOT  
P.O. Box 8212  
Harrisburg, PA 17105-8212

Engineering District 8-0  
Attn: Permit Office  
2140 Herr St  
Harrisburg, PA 17103

Lancaster County Courthouse  
Attn: Permits/Public works  
50 N Duke St  
Lancaster, PA 17108

Columbia Boro Office  
Attn: Engineering/Permitting  
308 Locust St #300  
Columbia, PA 17512

Norfolk Southern Railroad  
Attn: Engineering/Permitting  
650 W. Peachtree Street NW  
Atlanta, GA 30308



462

Veteran Memorial Bridge

Chiques Rock Outfitters

Columbia River Park

41 Walnut St

Columbia Crossing River Trails Center

Coffee and Cream

Mullen Books

Walnut St

N Front St

Locust St

Living