



Operations Center  
2839 New Beaver Avenue  
Pittsburgh PA 15233

January 15, 2025

**VIA ELECTRONIC FILING**

Secretary Rosemary Chiavetta  
Pennsylvania Public Utility Commission  
Secretary's Bureau  
Commonwealth Keystone Building  
400 North Street  
Harrisburg PA 17120

**Re: Duquesne Light Company – Docket No. M-2021-3023564**

Secretary Rosemary Chiavetta:

Enclosed please find a written outage report for the storm event that occurred in Duquesne Light Company's (Duquesne or the Company) service territory on Sunday, December 29, 2024, pursuant to 52 Pa. Code § 67.1.

Should you require additional information, please contact me at (412) 393-8324.

Sincerely,

A handwritten signature in blue ink that reads "Wesley Terek". The signature is written in a cursive, flowing style.

Wesley Terek, P.E.  
General Manager, System Planning & Protection

cc: Dan Searfoorce  
Derek Ruhl  
John Van Zant

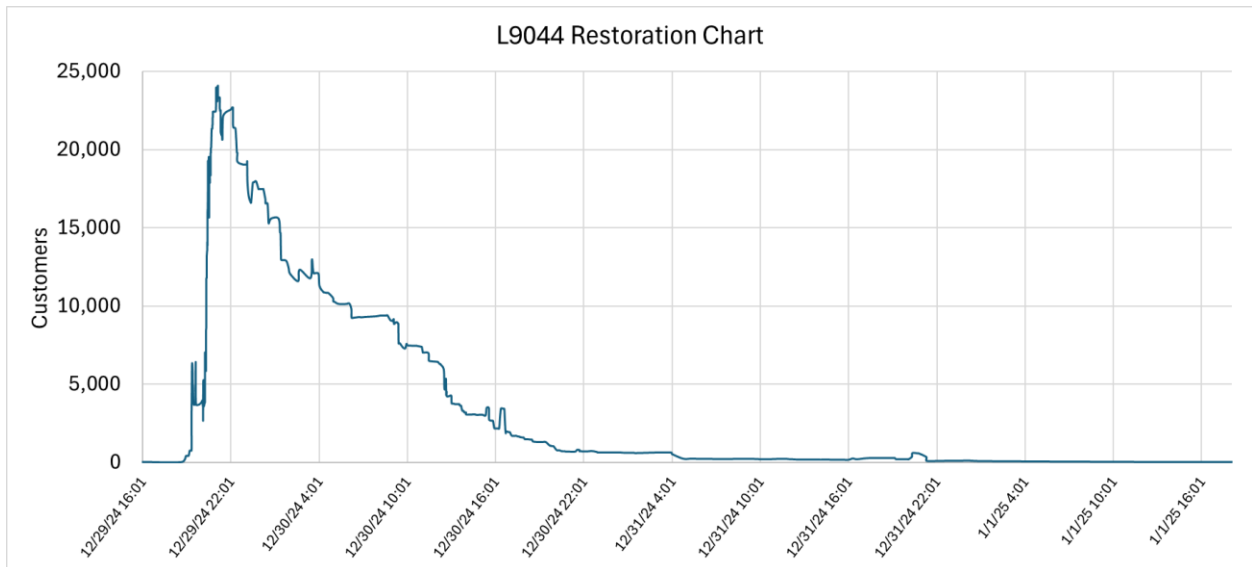


- (b) Approximate number of outage cases and trouble cases for each county affected during the event:

Allegheny County had a total of 165 troubled locations and 128 outages while Beaver County had a total of 67 troubled locations and 37 outages for a combined total of 232 troubled locations and 165 outages in Duquesne Light's service territory.

- (c) Approximate number of outages for each county affected during the event:

Allegheny County had a total of 23,405 customers and Beaver County had a total of 10,443 customers for a combined total of 33,848 customers affected throughout this storm event.



- (d) Approximate number of outage cases exceeding 6 or more hours in duration:

A total of 122 outage cases exceeded six or more hours in duration.

- (e) A listing of each outage case exceeding 6 or more hours in duration, including the following information:

A listing of each outage case exceeding six or more hours in duration is included at the end of this report.

(f) Reason for the interruption or outages:

At approximately 1845 on Sunday, December 29, 2024, Duquesne Light’s service territory was affected by severe thunderstorms with damaging winds. This weather caused downed power lines, fallen trees, and damage to our poles and equipment. The National Weather Service (NWS) reported that the highest wind speed during this storm was 36 mph and the highest wind gust was 61 mph.

For additional weather information, please see section (m) of this report.

(g) Projected time of restoration:

The projected time of restoration for the majority of our customers was set for 2200 on Wednesday, January 1, 2025.

(h) The number of utility workers, contract workers, and workers received as mutual aid assigned specifically to the repair work by general function, that is linemen, troublemen, tree crews, and the like:

<b>Utility / Company</b>	<b># of Workers</b>	<b>General Function</b>
Duquesne Light	147	Lineworkers
Duquesne Light	29	Troubleshooters
Duquesne Light	8	Substations
Duquesne Light	7	Underground
DLC – 4 Cut Above – 10 Nelson – 14 Penn Line – 21	49	Vegetation Management / Tree Crews
Live Line – 27 PAR – 13 Sargent – 29	69	Lineworker contractors

(i) The date and time of the first information of a service interruption:

Sunday, December 29, 2024 at 1857 hours.

(j) The date and time that repair crews were assembled:

Duquesne Light lineworker and troubleshooter staffing was increased for Sunday, December 29, 2024 in anticipation of the forecasted weather. Duquesne Light crews and contractors worked through the week to restore power to all affected customers.

(k) The actual time that service was restored to the last affected customer:

Service was restored to the last affected customer by this storm event on Thursday, January 2, 2025 at 1417 hours.

(l) A general description of the physical damage sustained by the utility facilities as a result of the interruption/outage:

During this event, Duquesne Light completed 232 cases of trouble consisting of 77 primary wires, 117 secondary and services, 24 transformers, 1 cable, and 13 broken poles.

(m) If the interruption / outage event was weather-related, the utility's weather reports, outlooks, or scenarios for the day before and the day of the interruption / outage event:

On Friday, December 27, 2024 at 1237 hours:

- The National Weather Service emailed an outlook for possible severe storms on Sunday, December 29, 2024. Pittsburgh was included in the area of marginal risk for these storms.

On Saturday, December 28, 2024 at 1444 hours:

- The National Weather Service emailed an updated outlook for possible severe storms on Sunday, December 29, 2024. This outlook shrunk the area considered to be at marginal risk to exclude Pittsburgh. It was now considered "unlikely" that the Pittsburgh area would see severe weather.

On Sunday, December 29, 2024 at 0444 hours:

- The National Weather Service emailed another updated outlook for possible severe storms and issued a Wind Advisory from 1000 to 2100 on Sunday, December 29, 2024. This outlook expanded the area at marginal risk to include Pittsburgh again.

On Sunday, December 29, 2024 at 0852 hours:

- The National Weather Service extended the Wind Advisory to 2200 on Sunday, December 29, 2024.

On Sunday, December 29, 2024 at 2134 hours:

- The National Weather Service extended the Wind Advisory to 0100 on Monday, December 30, 2024.

On Monday, December 30, 2024 at 0055 hours:

- The National Weather Service extended the Wind Advisory to 0400 on Monday, December 30, 2024.

On Tuesday, December 31, 2024 at 0338 hours:

- The National Weather Service emailed an outlook for possible severe storms on Tuesday, December 31, 2024. The Pittsburgh area was “unlikely” to see severe weather on Tuesday, but could see 35 mph or stronger gusts of wind on Wednesday, January 1, 2025.

Additional weather information is included at the end of this report.

- (n) If the interruption / outage event caused approximate outages that exceed 10% or more of customers in the utility’s entire service territory, rank the event in terms of the number and duration of outages and provide 2 comparable events, including the number and duration of outages for those comparable events:

This event did not exceed 10% or more customers.

Remarks:

Duquesne Light communicated storm restoration updates to our customers and the media through our duquesnelight.com website, our DLC Mobile app, X (formerly known as Twitter), and Facebook. Weather information, photos, and news articles are attached.

Listing of Each Outage Case with a Duration Greater than 6 Hours					
Outage Case	Municipality Name	Customers Affected	Duration (mins)	Start Time	Restoration Time
2541706	HOPEWELL	383	1181	12/29/24 18:57	12/30/24 14:38
2550015	INDUSTRY	12	1023	12/29/24 19:02	12/30/24 12:05
2550016	OHIOVILLE	81	1102	12/29/24 19:12	12/30/24 13:34
2550018	MORNINGSIDE (PGH)	20	370	12/29/24 19:13	12/30/24 1:23
2550019	SQUIRREL HILL (PGH)	2	1020	12/29/24 19:15	12/30/24 12:15
2550118	OSBORNE	1270	1280	12/29/24 19:20	12/30/24 16:40
2550020	WILKINSBURG	2	1250	12/29/24 19:20	12/30/24 16:10
2541722	PENN HILLS	1730	1234	12/29/24 19:21	12/30/24 15:55
2454657	PENN HILLS	1059	1039	12/29/24 19:22	12/30/24 12:41
2454664	PENN HILLS	10	544	12/29/24 19:26	12/30/24 4:30
2550153	MT LEBANON	11	2909	12/29/24 19:35	12/31/24 20:04
2550021	PENN HILLS	3	778	12/29/24 19:37	12/30/24 8:35
2550023	GREENE	113	905	12/29/24 19:59	12/30/24 11:04

Listing of Each Outage Case with a Duration Greater than 6 Hours					
Outage Case	Municipality Name	Customers Affected	Duration (mins)	Start Time	Restoration Time
2550024	SCOTT	2	1480	12/29/24 20:00	12/30/24 20:40
2550090	SQUIRREL HILL (PGH)	125	969	12/29/24 20:03	12/30/24 12:12
2550003	NORTH SIDE (PGH)	13	1186	12/29/24 20:04	12/30/24 15:50
2550085	HOOKSTOWN	5	876	12/29/24 20:04	12/30/24 10:40
2550158	RACCOON	11	1538	12/29/24 20:05	12/30/24 21:43
2550105	INDEPENDENCE	2	2633	12/29/24 20:07	12/31/24 16:00
2541720	FINDLAY	894	605	12/29/24 20:08	12/30/24 6:13
2550025	MCKEESPORT	2	1010	12/29/24 20:10	12/30/24 13:00
2550109	SQUIRREL HILL (PGH)	186	1253	12/29/24 20:13	12/30/24 17:06
2550091	CENTER	21	1537	12/29/24 20:14	12/30/24 21:51
2541729	NEW SEWICKLEY	212	523	12/29/24 20:15	12/30/24 4:58
2541713	OHIO	1681	605	12/29/24 20:15	12/30/24 6:20
2550004	RESERVE	90	825	12/29/24 20:15	12/30/24 10:00
2550026	CENTER	2	1409	12/29/24 20:16	12/30/24 19:45
2550028	ECONOMY	28	1591	12/29/24 20:17	12/30/24 22:48
2550112	INDEPENDENCE TWP	9	2258	12/29/24 20:17	12/31/24 9:55
2454663	MT LEBANON	3	2867	12/29/24 20:17	12/31/24 20:04
2541712	COLLIER	2600	786	12/29/24 20:19	12/30/24 9:25
2550030	CENTER	8	1371	12/29/24 20:19	12/30/24 19:10
2550029	ARLINGTON HEIGHTS (PGH)	4	2781	12/29/24 20:19	12/31/24 18:40
2454651	SCOTT	409	1045	12/29/24 20:20	12/30/24 13:45
2550119	LEETSDALE	1185	479	12/29/24 20:20	12/30/24 4:19
2454656	PENN HILLS	1660	1323	12/29/24 20:20	12/30/24 18:23
2550155	ROSS	23	628	12/29/24 20:22	12/30/24 6:50
2550120	HARMONY	1396	779	12/29/24 20:22	12/30/24 9:21
2454665	DAUGHERTY	251	1427	12/29/24 20:23	12/30/24 20:10
2550156	INGRAM	4	1453	12/29/24 20:23	12/30/24 20:36
2541715	ROSS	457	4180	12/29/24 20:24	1/1/25 18:04
2550043	SHALER	82	1446	12/29/24 20:24	12/30/24 20:30
2550159	CORLISS (PGH)	21	902	12/29/24 20:24	12/30/24 11:26
2550145	SQUIRREL HILL (PGH)	51	2651	12/29/24 20:24	12/31/24 16:35
2541718	WEST END (PGH)	312	747	12/29/24 20:25	12/30/24 8:52
2541719	CARNEGIE	377	902	12/29/24 20:26	12/30/24 11:28
2541753	COLLIER	12	2894	12/29/24 20:27	12/31/24 20:41
2454662	SPRING HILL (PGH)	3	2088	12/29/24 20:27	12/31/24 7:15
2550033	OVERBROOK (PGH)	3	1249	12/29/24 20:27	12/30/24 17:16
2454637	NEW HOMESTEAD (PGH)	1	1021	12/29/24 20:29	12/30/24 13:30
2550102	BELTZHOVER (PGH)	2	1456	12/29/24 20:29	12/30/24 20:45
2454636	CRAFTON	3	1406	12/29/24 20:29	12/30/24 19:55

Listing of Each Outage Case with a Duration Greater than 6 Hours					
Outage Case	Municipality Name	Customers Affected	Duration (mins)	Start Time	Restoration Time
2550094	ROSS	51	1041	12/29/24 20:29	12/30/24 13:50
2454660	PLUM	33	1260	12/29/24 20:30	12/30/24 17:30
2454638	MOON	137	900	12/29/24 20:30	12/30/24 11:30
2550036	CARNEGIE	7	1202	12/29/24 20:30	12/30/24 16:32
2454661	FOREST HILLS	12	1455	12/29/24 20:30	12/30/24 20:45
2454639	SPRING HILL (PGH)	3	1527	12/29/24 20:30	12/30/24 21:57
2550007	NORTH SIDE (PGH)	4	2385	12/29/24 20:30	12/31/24 12:15
2550048	FOX CHAPEL	17	2074	12/29/24 20:31	12/31/24 7:05
2550037	FINDLAY	12	1274	12/29/24 20:31	12/30/24 17:45
2550099	OHARA	464	848	12/29/24 20:32	12/30/24 10:40
2550013	SHALER	12	1278	12/29/24 20:32	12/30/24 17:50
2550113	SHADYSIDE (PGH)	16	2497	12/29/24 20:33	12/31/24 14:10
2550039	BRNTWD-CTY (PGH)	23	477	12/29/24 20:33	12/30/24 4:30
2454642	WHITE OAK	26	817	12/29/24 20:33	12/30/24 10:10
2550011	WHITEHALL	31	3157	12/29/24 20:33	1/1/25 1:10
2454652	NORTH SIDE (PGH)	2	1540	12/29/24 20:35	12/30/24 22:15
2454655	NORTH SIDE (PGH)	472	360	12/29/24 20:35	12/30/24 2:35
2550052	HOMEWOOD (PGH)	2	722	12/29/24 20:38	12/30/24 8:40
2550053	SCOTT	49	1215	12/29/24 20:38	12/30/24 16:53
2454647	RICHLAND	2	1036	12/29/24 20:39	12/30/24 13:55
2550054	RICHLAND	5	818	12/29/24 20:40	12/30/24 10:18
2550006	MT OLIVER	4	1275	12/29/24 20:40	12/30/24 17:55
2550098	BRUSHTON (PGH)	1206	933	12/29/24 20:42	12/30/24 12:15
2550055	EAST LIBERTY (PGH)	2	757	12/29/24 20:43	12/30/24 9:20
2550056	ALLENTOWN (PGH)	3	1950	12/29/24 20:44	12/31/24 5:14
2550057	KNOXVILLE (PGH)	4	1456	12/29/24 20:44	12/30/24 21:00
2550058	BEAVER FALLS	3	1240	12/29/24 20:45	12/30/24 17:25
2541748	MANCHESTER (PGH)	222	1376	12/29/24 20:45	12/30/24 19:41
2550059	SHALER	50	1101	12/29/24 20:46	12/30/24 15:07
2550071	FOX CHAPEL	8	1138	12/29/24 20:47	12/30/24 15:45
2454653	BRADDOCK HILLS	356	1253	12/29/24 20:47	12/30/24 17:40
2550061	PENN HILLS	12	1382	12/29/24 20:48	12/30/24 19:50
2550062	SWISSVALE	6	1655	12/29/24 20:50	12/31/24 0:25
2550034	NEW SEWICKLEY	23	1556	12/29/24 20:59	12/30/24 22:55
2550103	NEW SEWICKLEY	93	1555	12/29/24 21:00	12/30/24 22:55
2550124	PLUM	13	965	12/29/24 21:00	12/30/24 13:05
2550064	EDGEWOOD	1	456	12/29/24 21:02	12/30/24 4:38
2454659	CHESWICK BORO	13	990	12/29/24 21:03	12/30/24 13:33
2550065	PORTVUE	3	1119	12/29/24 21:06	12/30/24 15:45

Listing of Each Outage Case with a Duration Greater than 6 Hours					
Outage Case	Municipality Name	Customers Affected	Duration (mins)	Start Time	Restoration Time
2454654	PLUM	992	1006	12/29/24 21:07	12/30/24 13:53
2550005	ROBINSON	4	2205	12/29/24 21:08	12/31/24 9:53
2550081	PORTVUE	3	527	12/29/24 21:08	12/30/24 5:55
2550066	EDGEWOOD	47	1354	12/29/24 21:11	12/30/24 19:45
2550067	NORTH VERSAILLES	2	529	12/29/24 21:15	12/30/24 6:04
2550068	PENN HILLS	52	882	12/29/24 21:18	12/30/24 12:00
2550069	MT LEBANON	3	1839	12/29/24 21:19	12/31/24 3:58
2550070	BRENTWOOD	3	694	12/29/24 21:26	12/30/24 9:00
2550072	ELLIOTT (PGH)	302	1866	12/29/24 21:39	12/31/24 4:45
2454650	MCCANDLESS	128	956	12/29/24 22:05	12/30/24 14:01
2550073	INDEPENDENCE	1	2106	12/29/24 22:27	12/31/24 9:33
2550040	OHIOVILLE	2	1058	12/29/24 22:58	12/30/24 16:36
2550074	CHESWICK BORO	18	997	12/29/24 23:23	12/30/24 16:00
2550075	WILKINSBURG	32	1154	12/29/24 23:35	12/30/24 18:49
2550047	CASTLE SHANNON	4	843	12/29/24 23:57	12/30/24 14:00
2550076	MONROEVILLE	19	1472	12/30/24 0:13	12/31/24 0:45
2550080	NORTH VERSAILLES	2	585	12/30/24 0:30	12/30/24 10:15
2550077	FINDLAY	739	773	12/30/24 2:41	12/30/24 15:34
2550045	WHITEHALL	22	564	12/30/24 5:56	12/30/24 15:20
2550082	RACCOON	90	1274	12/30/24 6:46	12/31/24 4:00
2454643	CENTER	30	626	12/30/24 7:14	12/30/24 17:40
2454641	HAMPTON	42	545	12/30/24 7:55	12/30/24 17:00
2454640	ECONOMY	3	1009	12/30/24 8:36	12/31/24 1:25
2550051	SCOTT	7	388	12/30/24 9:05	12/30/24 15:33
2550050	MT LEBANON	107	527	12/30/24 9:13	12/30/24 18:00
2550126	CARNEGIE	290	4580	12/30/24 9:57	1/2/25 14:17
2550046	KNOXVILLE (PGH)	3	1409	12/30/24 12:41	12/31/24 12:10
2454649	PENN HILLS	13	1381	12/30/24 12:52	12/31/24 11:53
2550107	EMSWORTH	17	456	12/30/24 12:54	12/30/24 20:30
2550038	PENN HILLS	3	381	12/30/24 14:00	12/30/24 20:21
2550108	SEWICK HLS	13	1136	12/30/24 14:36	12/31/24 9:32
2550041	SEWICKLEY HEIGHTS	13	1137	12/30/24 14:55	12/31/24 9:52
2550010	FOX CHAPEL	3	605	12/30/24 19:25	12/31/24 5:30



# Severe Storms Possible Sunday

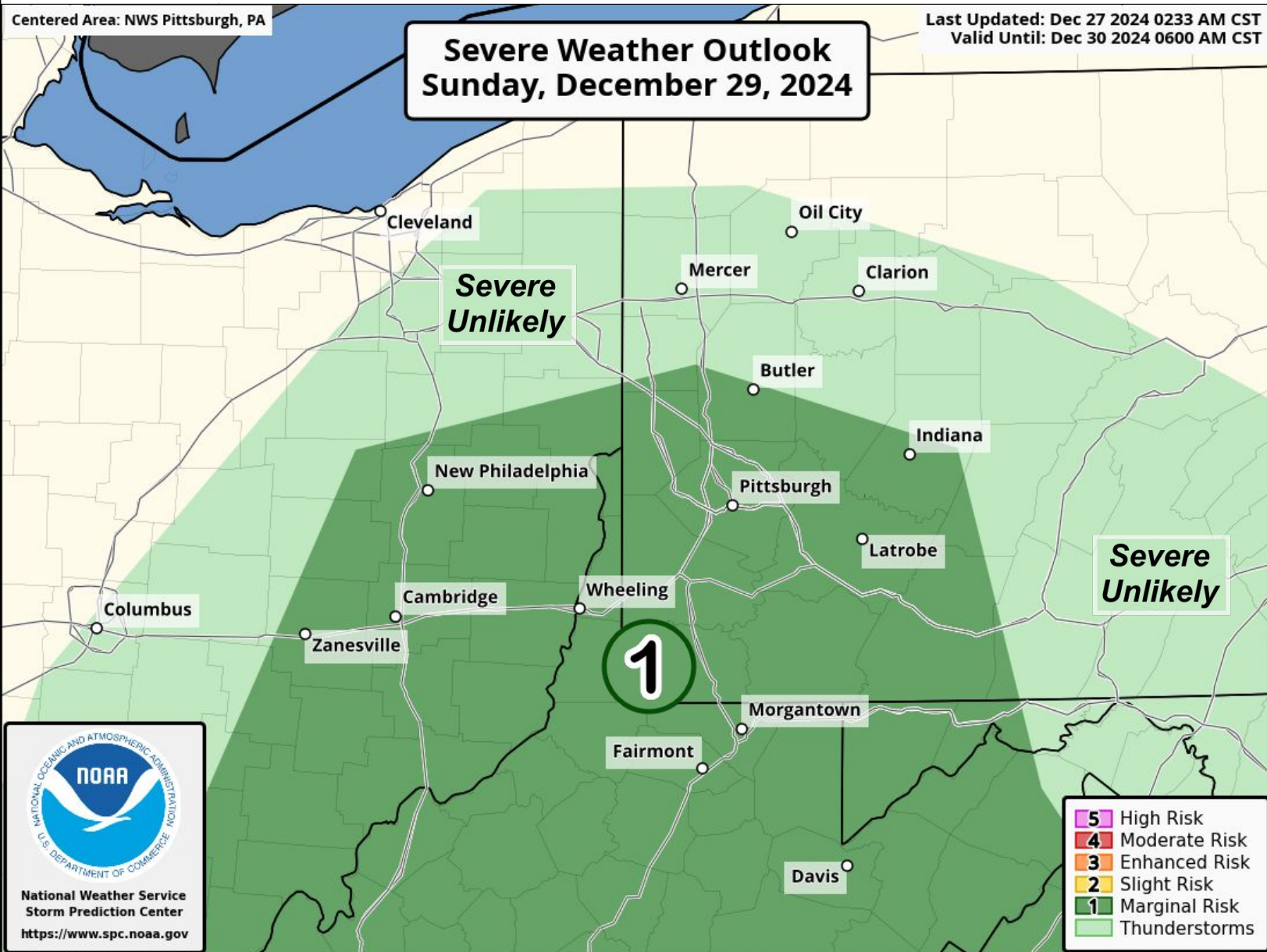
December 27, 2024

12:37 PM

## Outlook for Sunday, December 29, 2024

### OVERVIEW:

- Scattered thunderstorms possible Sunday. A few may become strong to severe, primarily south of I-80.
- Damaging winds are the main threat. A brief tornado cannot be ruled out.
- Timing: 10 AM - 8 PM (this window may narrow as confidence increases)



### NEXT BRIEFING

- As needed, if anything changes.



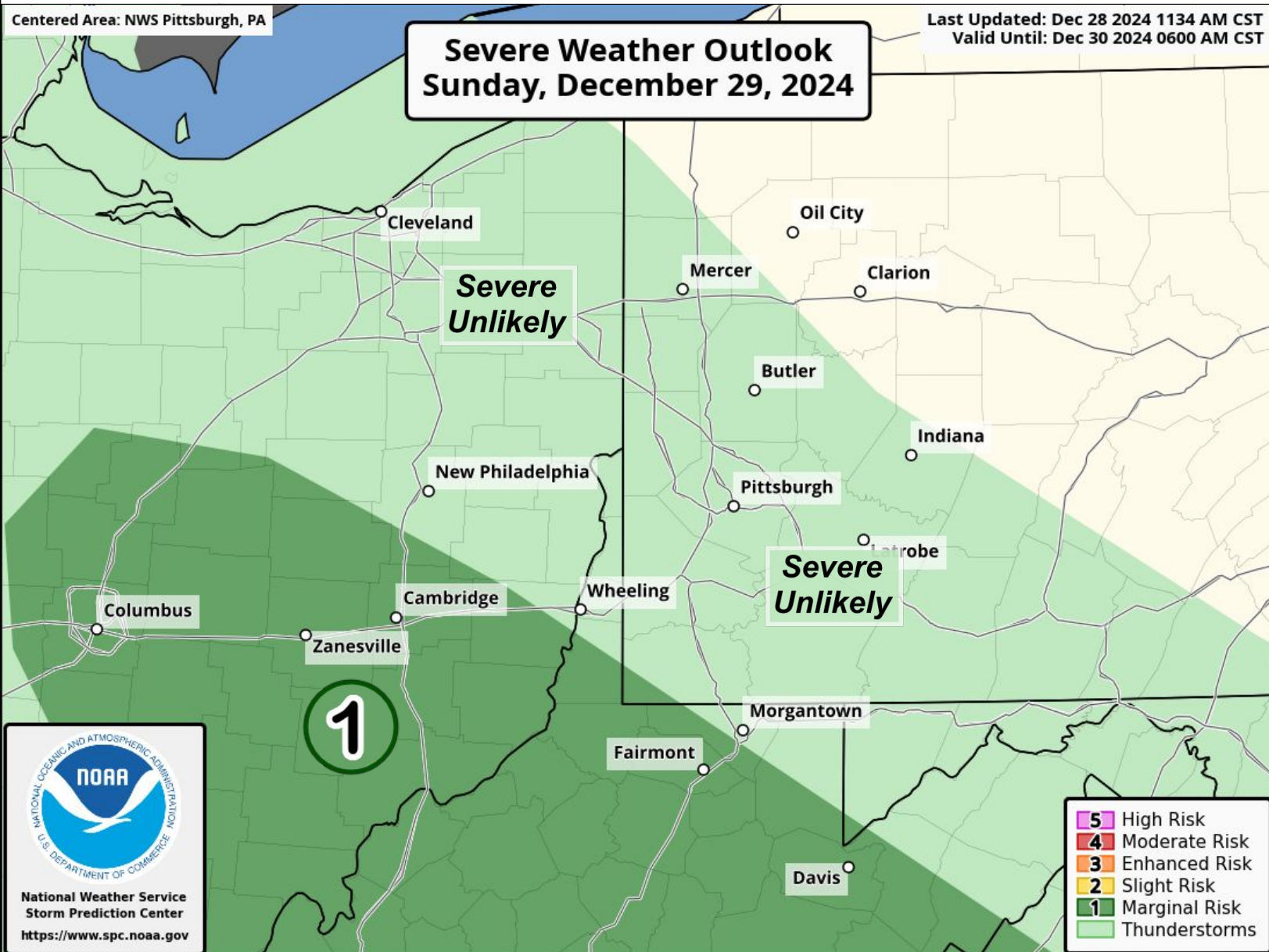
# Severe Storms Possible Sunday

December 28, 2024  
2:44 PM

## Outlook for Sunday, December 29, 2024

### OVERVIEW:

- Showers and possible thunderstorms on Sunday
- Damaging wind gusts possible in stronger showers/storms
- Timing: 1 PM - 8 PM Sunday
- Marginal Risk coverage area was reduced to eastern OH & northern WV



### NEXT BRIEFING

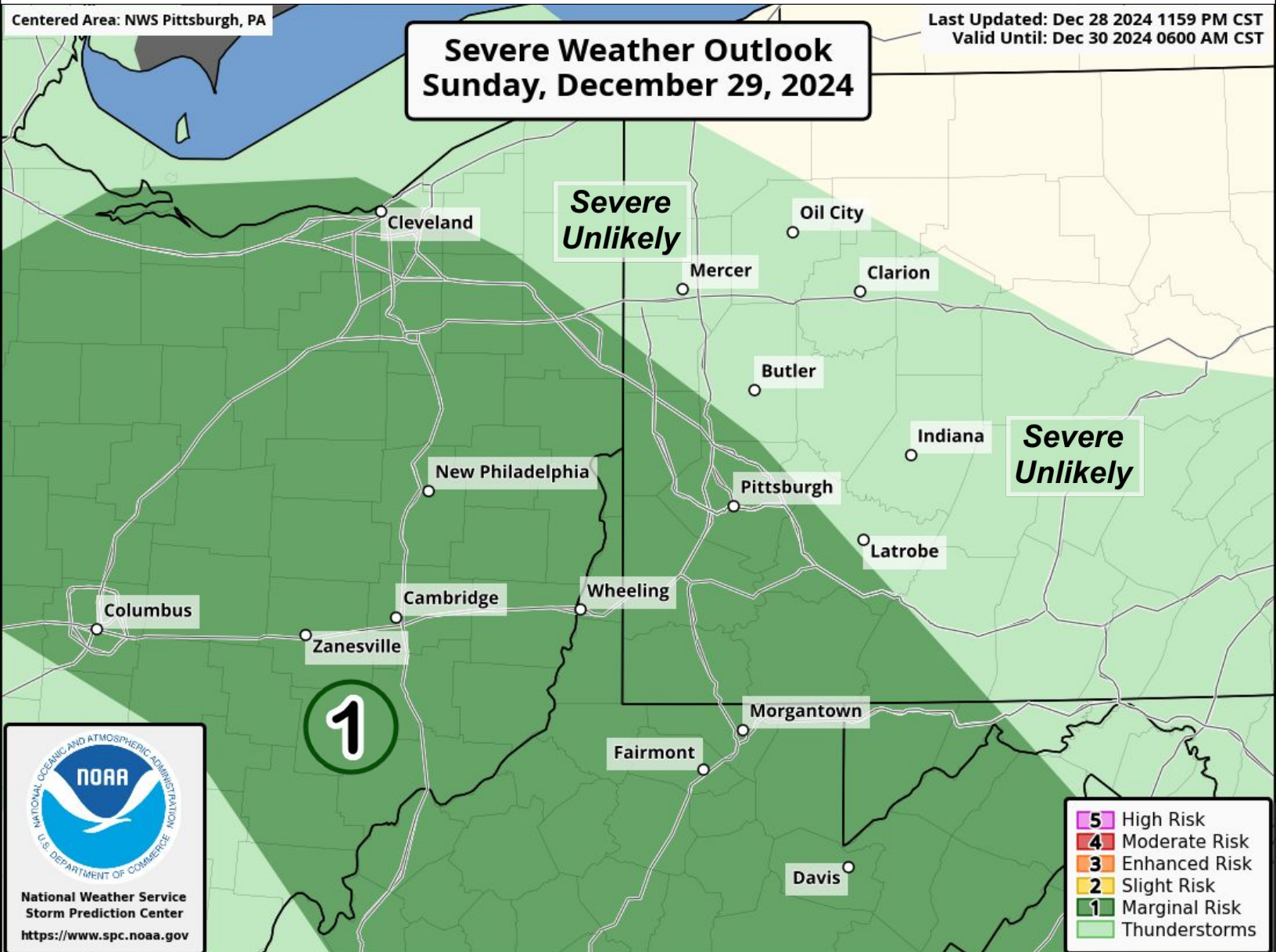
▪ As needed, if anything changes.



Outlook for Today, December 29, 2024

OVERVIEW:

- Areawide Wind Advisory from 10AM - 9PM
- Showers, strong winds, and thunderstorms possible this afternoon and evening with a crossing front.



NEXT BRIEFING

- As needed, if anything changes.



# Wind Advisory

December 29, 2024

8:52 AM

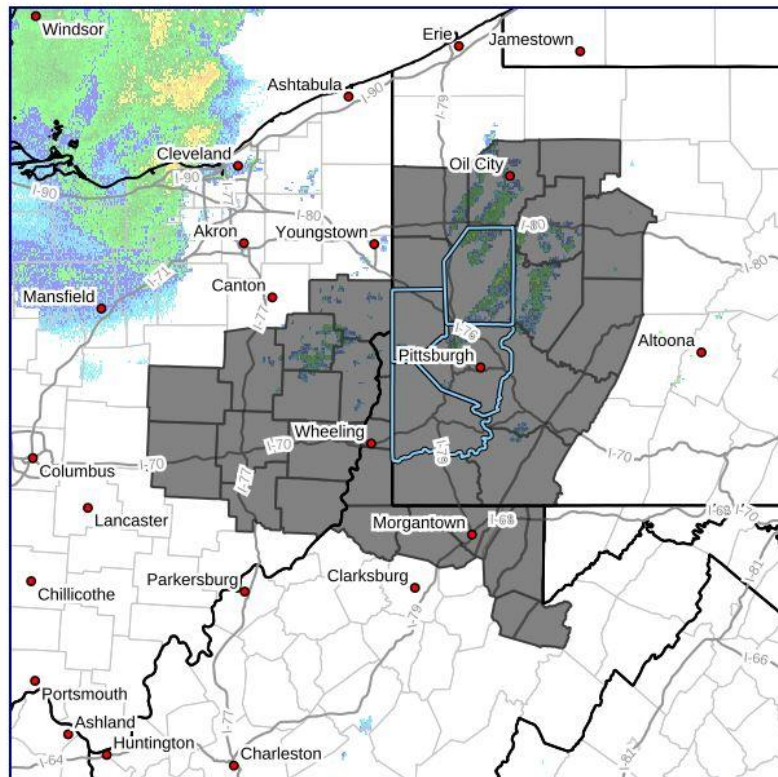
In effect from 10 AM to 10 PM today



**A Wind Advisory is in effect from 10AM to 10PM today. Wind gusts of up to 50 MPH will be possible even away from the more severe thunderstorms, mostly associated with showers this afternoon and evening.**

## Interactive NWS Alert

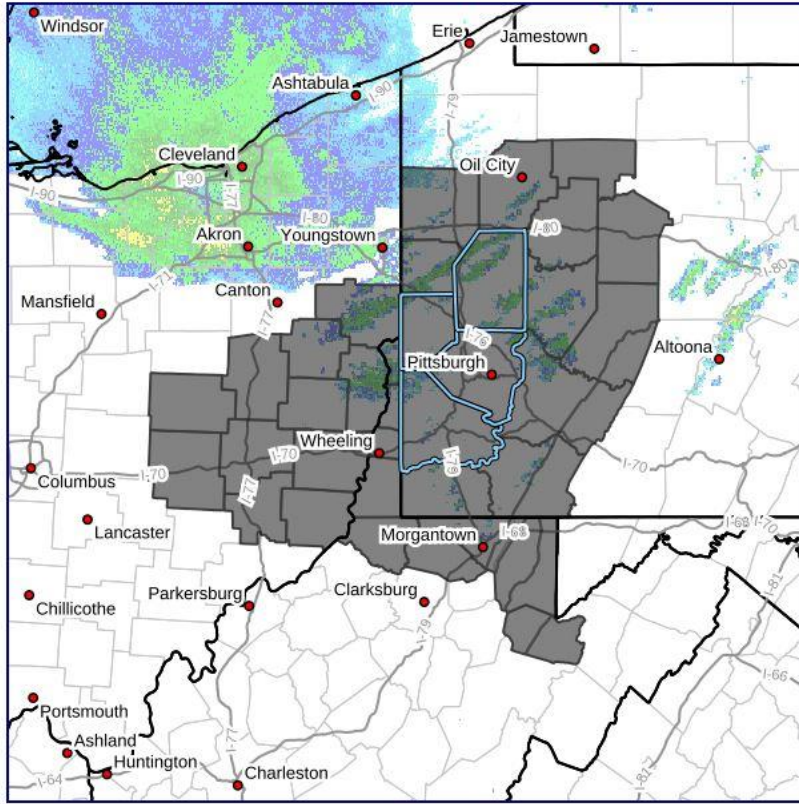
Event extended (time): Wind Advisory for Allegheny County, PA, Beaver County, PA, Washington County, PA, Butler County, PA  
Sent via email and SMS at 9:34 pm EST, Dec 29th 2024



Radar valid at 100 am EST, Dec 30th 2024

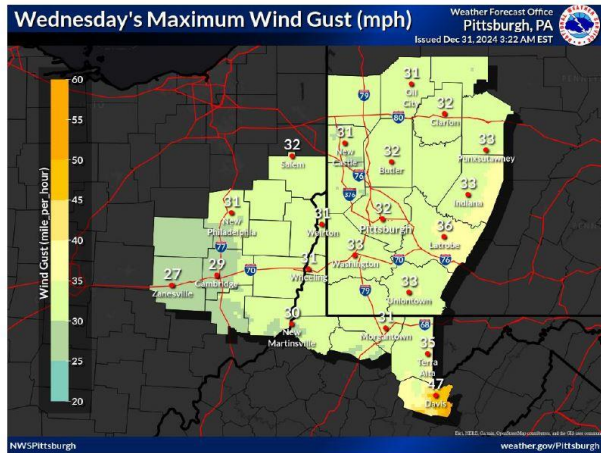
**Interactive NWS Alert**

Event extended (time): Wind Advisory for Allegheny County, PA, Beaver County, PA, Washington County, PA, Butler County, PA  
 Sent via email and SMS at 1255 am EST, Dec 30th 2024



Radar valid at 400 am EST, Dec 30th 2024

**Wednesday Maximum Wind Gust** December 31, 2024 4:49 AM



Potential 35 MPH or stronger gusts in ridges may create areas of blowing and drifting snow, resulting in reduced visibility at times.



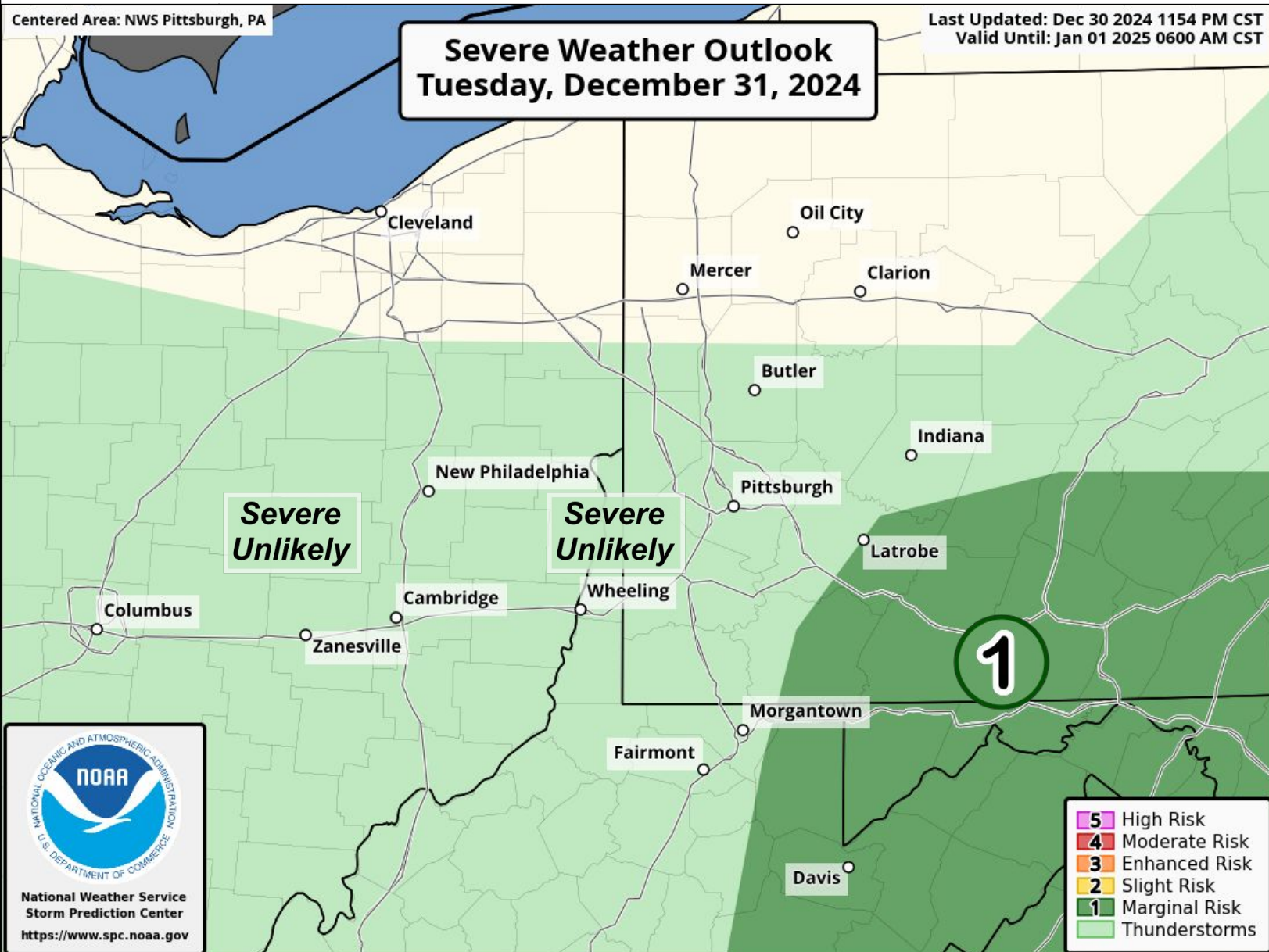
# Severe Thunderstorms Possible

December 31, 2024  
3:38 AM

## Outlook for Today, December 31, 2024

### OVERVIEW:

- Marginal Risk (level 1 out of 5) for severe storms
- Damaging wind gusts main hazard. Hail possible.
- Timing 1pm to 7pm



### NEXT BRIEFING

▪ As needed



000  
CDUS41 KPBZ 300646  
CLIPIT

CLIMATE REPORT  
NATIONAL WEATHER SERVICE PITTSBURGH PA  
146 AM EST MON DEC 30 2024

.....  
...THE PITTSBURGH PA CLIMATE SUMMARY FOR DECEMBER 29 2024...

CLIMATE NORMAL PERIOD 1991 TO 2020  
CLIMATE RECORD PERIOD 1871 TO 2024

WEATHER ITEM OBSERVED TIME RECORD YEAR NORMAL DEPARTURE LAST  
VALUE (LST) VALUE VALUE FROM YEAR  
NORMAL

.....  
TEMPERATURE (F)

YESTERDAY

MAXIMUM	65	208 PM	67	1889	38	27	42
MINIMUM	45	1257 AM	-6	1880	24	21	32
AVERAGE	55		31	24	37		

PRECIPITATION (IN)

YESTERDAY	0.24	1.72	1942	0.09	0.15	T
MONTH TO DATE	2.21			2.65	-0.44	2.74
SINCE DEC 1	2.21			2.65	-0.44	2.74
SINCE JAN 1	43.29			39.42	3.87	32.58

SNOWFALL (IN)

YESTERDAY	0.0	4.9	2012	0.4	-0.4	T
MONTH TO DATE	5.7			7.1	-1.4	1.1
SINCE DEC 1	5.7			7.1	-1.4	1.1
SINCE JUL 1	6.5			9.9	-3.4	1.7
SNOW DEPTH	0					

DEGREE DAYS

HEATING

YESTERDAY	10	34	-24	28
MONTH TO DATE	827	904	-77	632
SINCE DEC 1	827	904	-77	632
SINCE JUL 1	1627	2042	-415	1573

COOLING

YESTERDAY	0	0	0	0
MONTH TO DATE	0	0	0	0
SINCE DEC 1	0	0	0	0
SINCE JAN 1	1224	797	427	794

.....  
WIND (MPH)

HIGHEST WIND SPEED	36	HIGHEST WIND DIRECTION	SW (210)
HIGHEST GUST SPEED	61	HIGHEST GUST DIRECTION	S (200)
AVERAGE WIND SPEED	9.3		

SKY COVER  
POSSIBLE SUNSHINE MM  
AVERAGE SKY COVER 0.9

WEATHER CONDITIONS  
THE FOLLOWING WEATHER WAS RECORDED YESTERDAY.  
RAIN  
LIGHT RAIN  
FOG

RELATIVE HUMIDITY (PERCENT)  
HIGHEST 90 300 PM  
LOWEST 63 1100 PM  
AVERAGE 77

.....

THE PITTSBURGH PA CLIMATE NORMALS FOR TODAY  
NORMAL RECORD YEAR  
MAXIMUM TEMPERATURE (F) 38 68 1875  
MINIMUM TEMPERATURE (F) 24 -9 1880

SUNRISE AND SUNSET  
DECEMBER 30 2024.....SUNRISE 744 AM EST SUNSET 504 PM EST  
DECEMBER 31 2024.....SUNRISE 744 AM EST SUNSET 504 PM EST

- INDICATES NEGATIVE NUMBERS.  
R INDICATES RECORD WAS SET OR TIED.  
MM INDICATES DATA IS MISSING.  
T INDICATES TRACE AMOUNT.



# Tens of thousands around Pittsburgh without power after gusty winds move through the region

Colder temperatures and the chance for snow move in as the new year begins



PITTSBURGH POST-GAZETTE

Got a news tip? 412-263-1601

localnews@post-gazette.com x

DEC 30, 2024

6:30 AM

Tens of thousands of customers throughout Western Pennsylvania were still dealing with power outages Monday morning after gusty winds moved into the region ahead of a cold front that’s going to bring bitter temperatures into the new year.

Here’s what’s happening around the region.

## Power outages

Duquesne Light was still reporting more than 23,000 customers without power as of about 12:45 p.m., with more than 22,000 in Allegheny County and nearly 2,000 in Beaver County. Parts of the Ohio valley in and around

Sewickley, the lower Allegheny valley near Sharpsburg and eastern suburbs in and around Churchill were some of the hardest hit areas.

West Penn Power was reporting about 2,600 outages in Butler County and about 1,000 outages in each of Washington and Westmoreland counties.

Duquesne Light said its crews have been working “as quickly as possible” to restore power to the nearly 50,000 customers who were affected at the peak of the storm and are “focusing first on critical and emergent needs.”

"Damage assessment is still in progress, but winds have led to at least 273 instances of a tree/limb on a wire, 106 broken utility poles and 93 wires down," the company said in a release, according to [Post-Gazette news partner KDKA-TV](#). "As we continue to monitor the weather conditions, crews are collectively working around the clock to isolate and restore as many customers as possible."

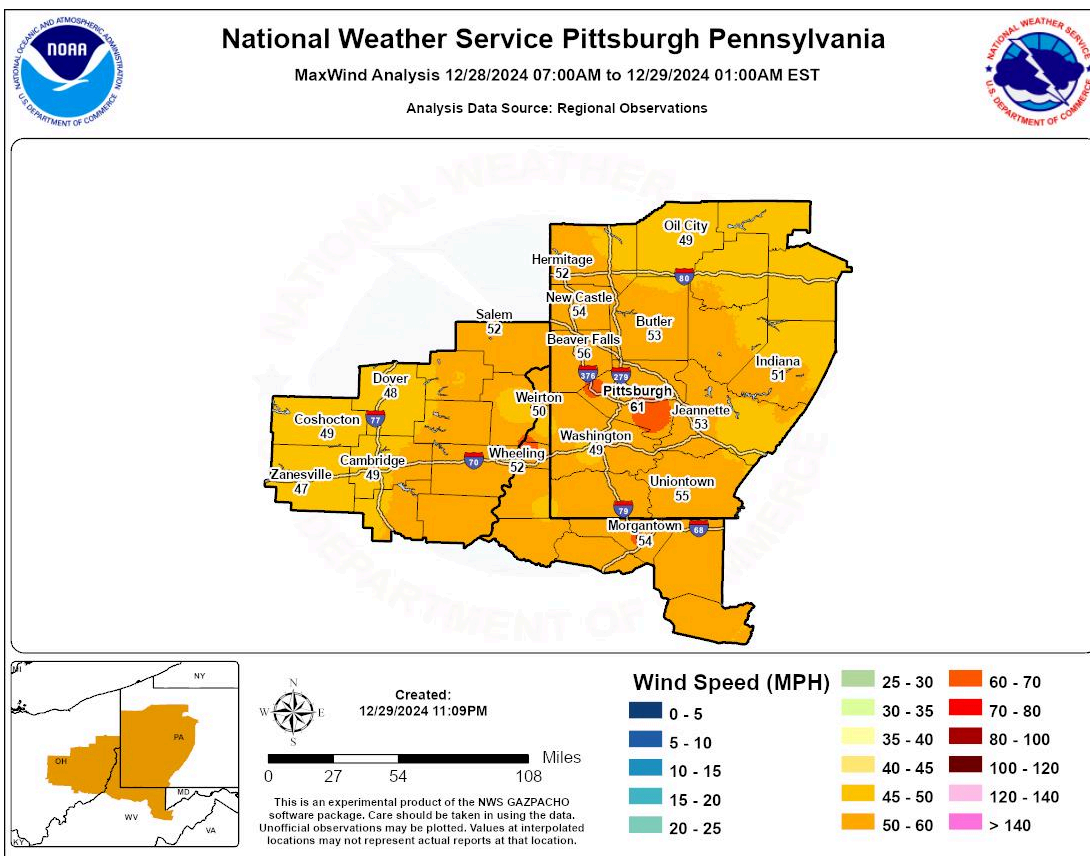
KDKA reported Duquesne Light requested 50 mutual aid contractors to help restore power.

## How bad was the wind?

Allegheny County recorded some of the highest [wind gusts in the National Weather Service Pittsburgh's](#) coverage area. Gusts around 60 mph were reported in at the Allegheny County Airport in West Mifflin and Pittsburgh International Airport.

Surrounding areas also saw wind gusts higher than 45 mph.

The weather service had issued a wind advisory that expired overnight.



## What’s the upcoming forecast?

The winds came in ahead of a cold front that’s going to see temperatures plummet heading into the new year.

The weather service said a system will move across the eastern Great Lakes on Monday night, bringing more rain and strong winds.

Another system will hit Western Pennsylvania on Tuesday, including more rain for [New Year’s Eve festivities](#).

Temperatures will remain in the mid- to upper 40s through Tuesday after peaking unseasonably warm in the low 60s over the weekend.

After that, the cold is on.

The weather service is calling for high temperatures in the low to mid-30s Wednesday and Thursday before dipping even lower into the mid- to upper 20s through the weekend. Low temperatures will fall into the teens.

## Is there any snow coming?

Possibly.

The weather service said there could be accumulating snowfall in the area Wednesday and Thursday after the cold front passes Tuesday night.

As the front moves through, winds behind it coming off the Great Lakes could bring [lake-effect snow](#) to areas north of Pittsburgh.

The ridges in Westmoreland and Fayette counties could see upward of 3 inches of new snow, according to the forecast. The NWS currently is not forecasting 3 inches or more in the immediate Pittsburgh area.



## Travel issues

With severe weather in the Midwest and the high winds in and around the Pittsburgh area, dozens of flights were delayed at Pittsburgh International Airport on Sunday, and several more had been delayed Monday.

The airport saw 92 combined inbound and outbound delays Sunday, according to flight-tracking website [FlightAware](#). Five flights were

canceled.

As of about 11:30 a.m. Monday, [12 flights had been delayed](#) and one was canceled.

*First Published: December 30, 2024, 6:30 a.m.*

*Updated: December 30, 2024, 11:41 a.m.*

---

### Limited Time Offer

8 weeks of unlimited access for only 99¢!

**GET OFFER**

---

## LOCAL NEWS

# Thousands of Pittsburgh-area residents without power due to wind gusts, stormy weather



By **Garrett Behanna**

Updated on: December 30, 2024 / 12:57 PM EST / CBS Pittsburgh

---

PITTSBURGH (KDKA) -- Thousands of people are without power due to a combination of strong wind gusts and stormy weather across the Pittsburgh area on Sunday.

Many impacted communities are within Allegheny County, with Duquesne Light saying Sunday night that their crews are working

"around the clock to restore service as quickly and safely as possible."

Duquesne Light added that wind gusts of 50+ mph have knocked down trees and broken utility poles across the region. Crews will first work to restore service to those with "critical and emergent needs."

AD



As of 10 p.m. Sunday, approximately 55,416 customers in Duquesne Light's service region were without power, with an estimated 50,000 in Allegheny County and 5,100 in Beaver County.

FirstEnergy also reports outages in their service areas. Many of the estimated 22,366 customers without power across FirstEnergy's Pennsylvania territory are located in the Pittsburgh region.

FirstEnergy outages below are accurate as of 10 p.m. Sunday.

- Allegheny County - 1,801
- Beaver County - 1,571
- Westmoreland County - 5,361
- Washington County - 1,841
- Mercer County - 2,223
- Lawrence County - 1,005
- Butler County - 2,511
- Fayette County - 691
- Greene County - 456

The National Weather Service has extended a wind advisory through 1 a.m. Monday for wind gusts up to 50 mph, according to First Alert Meteorologist Kristin Emery.

HEADS UP: NWS has extended the wind advisory through 1AM for wind gusts up to 50mph. After that, winds will still be gusty but not as strong or damaging through morning.  
[@KDKA pic.twitter.com/U7aHT1xyQT](https://pic.twitter.com/U7aHT1xyQT)

– Kristin Emery (@KristinEmery) December 30, 2024

KDKA-TV's Ricky Sayer was in North Huntingdon, Westmoreland County, where the strong winds brought down a tree onto a roadway and a parked car.

Strong winds brought down a tree onto a roadway and a parked car on Sunday night.

KDKA-TV

On Monday, Duquesne Light said via a news release that it requested 50 mutual assistance contractors to aid with storm restoration.

"Damage assessment is still in progress, but winds have led to at least 273 instances of a tree/limb on a wire, 106 broken utility poles and 93 wires down," the company said. "As we continue to monitor the weather conditions, crews are collectively working around the clock to isolate and restore as many customers as possible."

[Click here](#) to report an outage with FirstEnergy.

[Click here](#) to report an outage with Duquesne Light.

---

**More from CBS News**



Duquesne Light Company  
19h · 🌐



DLC crews are working safely and as quickly as possible to restore around 50,000 customers who were affected following yesterday's severe weather and thunderstorms that impacted DLC's service territory.

The storm, with 50+ mph winds gusts, brought significant damage including downed trees, wires and broken poles. Crews have been working through the night to make repairs and restore as many customers as possible, focusing first on critical and emergent needs.

You can track updates on our outage map: <https://duquesnelight.com/outages-safety/current-outages>.

During severe weather, always remember to:

- Avoid downed power lines.
- Call 9-1-1 for any emergency medical issues that could be impacted by an outage.
- Avoid walking under or around dead or dying trees as well as trees with dangling limbs.

Learn more about storm response and safety tips here: <https://shorturl.at/fGI5O>.



## CREWS ARE WORKING TO SAFELY **RESTORE YOUR POWER**

We appreciate your patience as we restore service as quickly as possible.



Duquesne Light Company  
Electric Utility Provider

Send message

Figure 1: Post from DLC on Facebook made on December 30, 2024 at 1045.



Duquesne Light Company

8h · 🌐



We have been working as safely and quickly as possible to restore power to around 50,000 customers — with less than 5,000 customers remaining — who lost service due to strong winds and thunderstorms that came across DLC's service territory on Sunday.

Given the damage, which included over 400 instances of either vegetation on wires, broken utility poles or wires down, we estimate that all impacted customers will be restored by 10 p.m. on Wednesday, Jan. 1, with many expected ... [See more](#)



Duquesne Light Company

Electric Utility Provider



Send message

Figure 2: Post from DLC on Facebook made on December 30, 2024 at 2107.