

January 22, 2025

E-Filed on 01/22/2025

**The Secretary of the Commission
PA Public Utility Commission
400 North Street
Harrisburg, PA 17120**

Subject: Proposed installation of a fiber optics wire line across the Southwest Pennsylvania Railroad Company (SWP) corridor within the public right of way limits of Fayette Street / State Route 0040 in Uniontown, Fayette County, Pennsylvania.

**USDOT # 145323X – Fayette Street / State Route 0040
Uniontown, Fayette County, Pennsylvania
Milepost: 71.20,
Southwest PA Division, FM&P Division**

Lat: 39.897450

Long: -79.722691

Docket Number = A-2024-3051964

1. Applicant Name: Omni Fiber, LLC
4860 Parkway Drive, Suite 450
Mason, OH, 45040
2. Applicant Attorney: Robert J. DeSousa
Eckert Seamans Cherin & Mellott, LLC
213 Market Street, 8th Floor,
Harrisburg, PA 17101

rdesousa@eckertseamans.com
717.237.6000
3. Our purpose in contacting you is to provide you with the Final Construction Prints for this proposed installation within the public right of way at Fayette Street / State Route 0040 in Uniontown, Fayette County, Pennsylvania for the purpose of extending its communications network. Omni Fiber, LLC's work will be in the public right of way,

Adam Weig
Right-of-Way Manager
Southwest Pennsylvania Railroad Company
Carload Express, Inc.
519 Cedar Way, Bldg 1, Suite 100
Oakmont, PA 15139

adamzweig@carloadexpress.com
(412) 426-2400

UNIONTOWN CITY
Shannon Wood
20 N. Gallatin Avenue
Uniontown, PA 15401

swood@uniontowncity.com
(724) 430-2900

FAYETTE COUNTY
Amy Revak
Court House
61 East Main Street
Uniontown, PA 15401

arevak@fayettepa.org
(724) 430-1200 x 1504

Utility Contacts:

Verizon
40 South Mercer Street, 2nd Flr
New Castle/PA/16101

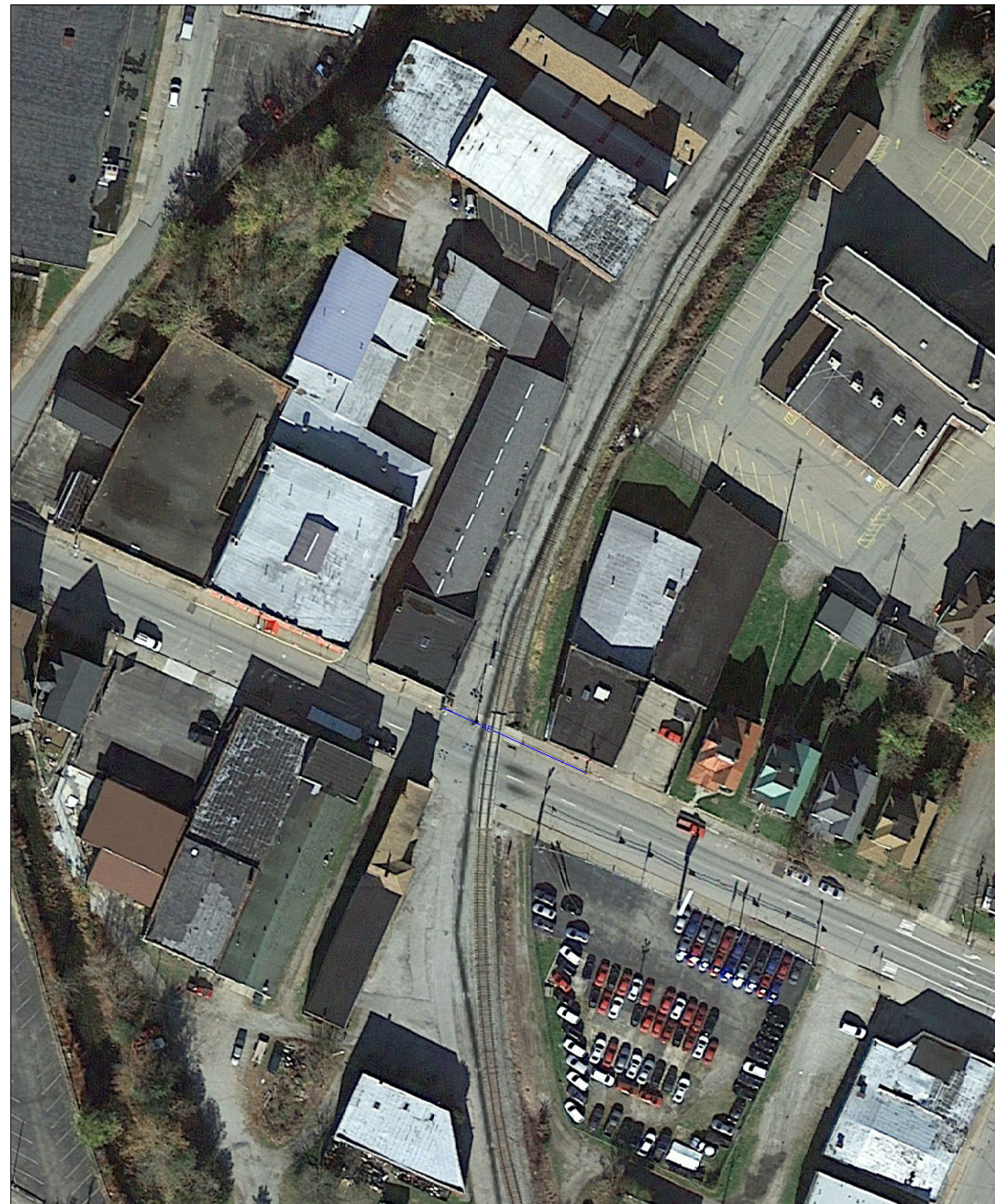
Matthew W. Kehr matthew.w.kehr@verizon.com
570-466-0645

WEST PENN POWER
PO BOX 371422
Pittsburgh, PA 15250-7422

Timothy Sosko tsosko@firstenergycorp.com
724-757-4277



1 VICINITY MAP
SCALE: NTS



2 AERIAL MAP
SCALE: NTS

NOTES:

- THIS DRAWING IS BASED ON GIS MAPPING AND AERIAL IMAGES, AND IS NOT BASED ON AN ACTUAL BOUNDARY SURVEY. CONTRACTOR SHALL FIELD VERIFY ALL EXISTING CONDITIONS PRIOR TO COMMENCEMENT OF CONSTRUCTION.
- OPEN CUT CONSTRUCTION THROUGH EXISTING PAVEMENT, I.E. ROADWAYS, PARKING AREAS, SIDEWALKS WILL NOT BE ALLOWED. CONSTRUCTION UNDER EXISTING PAVEMENTS WILL BE REQUIRED TO BE INSTALLED WITH DIRECTIONAL BORING TECHNIQUE.
- THE CONTRACTOR SHALL REPAIR ANY PAVED AREAS DAMAGED DURING CONSTRUCTION PER LOCAL JURISDICTION'S SPECIFICATIONS. CONTRACTOR SHALL MAINTAIN THE ORIGINAL SLOPE OF THE SIDEWALK TO MATCH EXISTING CONSTRUCTION. CONTRACTOR TO FIELD VERIFY THE EXISTENCE OF UNDERGROUND UTILITIES THROUGH NON-DESTRUCTIVE MEANS

MAINTENANCE TRAFFIC CONTROL NOTES:

- ALL WORK ASSOCIATED WITH THE INSTALLATION OF THE PROPOSED FIBER CABINET, INCLUDING BUT NOT LIMITED TO, THE CABINET, ELECTRIC, FIBER, LANDSCAPING RESTORATION, ETC, THE CONTRACTOR SHALL PROVIDE AND MAINTAIN TRAFFIC CONTROL IN ACCORDANCE WITH THE PENNSYLVANIA DEPARTMENT OF TRANSPORTATION MANUAL OF UNIFORM TRAFFIC CONTROL DEVICES (MUTCD), LATEST EDITION.
- FOR THIS INSTALLATION, THE CONTRACTOR SHALL PROVIDE AND MAINTAIN TRAFFIC CONTROL PER THE MAINTENANCE OF THE TEMPORARY TRAFFIC CONTROL PLAN AS SHOWN ON SHEET MOT-1.

LEGEND

- | | | |
|------------------|---------------------|------------------------|
| — ROW | — RIGHT OF WAY | — STREET SIGN |
| — OH/F | — OVERHEAD FIBER | — FIRE HYDRANT |
| — OH/P | — OVERHEAD POWER | — CATCH BASIN |
| — GAS | — UNDERGROUND GAS | — UTILITY POLE |
| — WATER | — UNDERGROUND WATER | — LIGHT POST |
| — SEWER | — UNDERGROUND SEWER | — SANITARY |
| — EXISTING FENCE | | — WATER VALVE |
| — CENTERLINE | | — MAN HOLE |
| | | — PARKING METER |
| | | — LIGHT & UTILITY POLE |
| | | — POLE ANCHOR |



REVISIONS

REV	DATE	DESCRIPTION	DRAFTER
B	1/13/25	Final Construction Prints	TAT

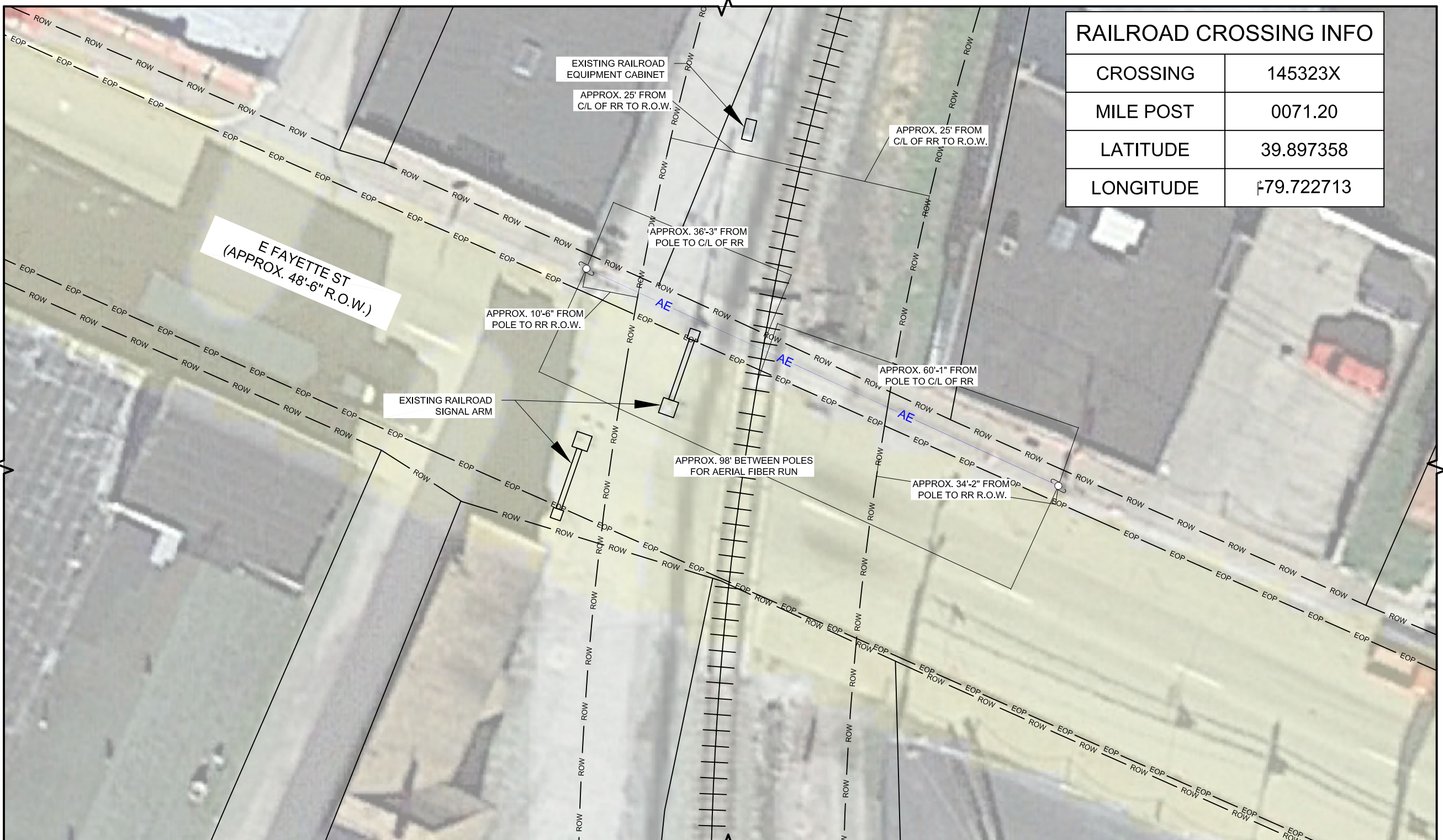
FINAL CONSTRUCTION
DRAWING

UTE14/UTW14 - RR CROSSING
- AERIAL

SOUTHWEST PENNSYLVANIA RAILROAD
UNIONTOWN CITY RR R/W

SHEET TITLE
PLAN VIEW - UTE14/UTW14
- RR - AERIAL

SHEET NUMBER
COVER SHEET



RAILROAD CROSSING INFO	
CROSSING	145323X
MILE POST	0071.20
LATITUDE	39.897358
LONGITUDE	-79.722713



REVISIONS			
REV	DATE	DESCRIPTION	DRAFTER
B	1/13/25	Final Construction Prints	TAT

FINAL CONSTRUCTION
DRAWING

UTE14/UTW14 - RR CROSSING
- AERIAL

SOUTHWEST PENNSYLVANIA RAILROAD
UNIONTOWN CITY RR R/W

SHEET TITLE
PLAN VIEW - UTE14/UTW14
- RR - AERIAL

SHEET NUMBER
SHEET 1 OF 2

- NOTES:**
- THIS DRAWING IS BASED ON GIS MAPPING AND AERIAL IMAGES, AND IS NOT BASED ON AN ACTUAL BOUNDARY SURVEY. CONTRACTOR SHALL FIELD VERIFY ALL EXISTING CONDITIONS PRIOR TO COMMENCEMENT OF CONSTRUCTION.
 - OPEN CUT CONSTRUCTION THROUGH EXISTING PAVEMENT, I.E. ROADWAYS, PARKING AREAS, SIDEWALKS WILL NOT BE ALLOWED. CONSTRUCTION UNDER EXISTING PAVEMENTS WILL BE REQUIRED TO BE INSTALLED WITH DIRECTIONAL BORING TECHNIQUE.
 - THE CONTRACTOR SHALL REPAIR ANY PAVED AREAS DAMAGED DURING CONSTRUCTION PER LOCAL JURISDICTION'S SPECIFICATIONS. CONTRACTOR SHALL MAINTAIN THE ORIGINAL SLOPE OF THE SIDEWALK TO MATCH EXISTING CONSTRUCTION. CONTRACTOR TO FIELD VERIFY THE EXISTENCE OF UNDERGROUND UTILITIES THROUGH NON-DESTRUCTIVE MEANS

- MAINTENANCE TRAFFIC CONTROL NOTES:**
- ALL WORK ASSOCIATED WITH THE INSTALLATION OF THE PROPOSED FIBER CABINET, INCLUDING BUT NOT LIMITED TO, THE CABINET, ELECTRIC, FIBER, LANDSCAPING RESTORATION, ETC. THE CONTRACTOR SHALL PROVIDE AND MAINTAIN TRAFFIC CONTROL IN ACCORDANCE WITH THE PENNSYLVANIA DEPARTMENT OF TRANSPORTATION MANUAL OF UNIFORM TRAFFIC CONTROL DEVICES (MUTCD), LATEST EDITION.
 - FOR THIS INSTALLATION, THE CONTRACTOR SHALL PROVIDE AND MAINTAIN TRAFFIC CONTROL PER THE MAINTENANCE OF THE TEMPORARY TRAFFIC CONTROL PLAN AS SHOWN ON SHEET MOT-1.

LEGEND			
—	ROW — RIGHT OF WAY	—	STREET SIGN
—	OH/F — OVERHEAD FIBER	—	FIRE HYDRANT
—	OH/P — OVERHEAD POWER	—	CATCH BASIN
—	GAS — UNDERGROUND GAS	—	UTILITY POLE
—	WATER — UNDERGROUND WATER	—	LIGHT POST
—	SEWER — UNDERGROUND SEWER	—	SANITARY
—	EXISTING FENCE	—	MAN HOLE
—	CENTERLINE	—	PARKING METER
—		—	WATER VALVE
		—	POLE ANCHOR



1 PLAN VIEW - UTE14/UTW14 - RR - AERIAL

SCALE:
11 x 17: 1" = 20'
22 x 34: 1" = 10'

RE: LL/T1



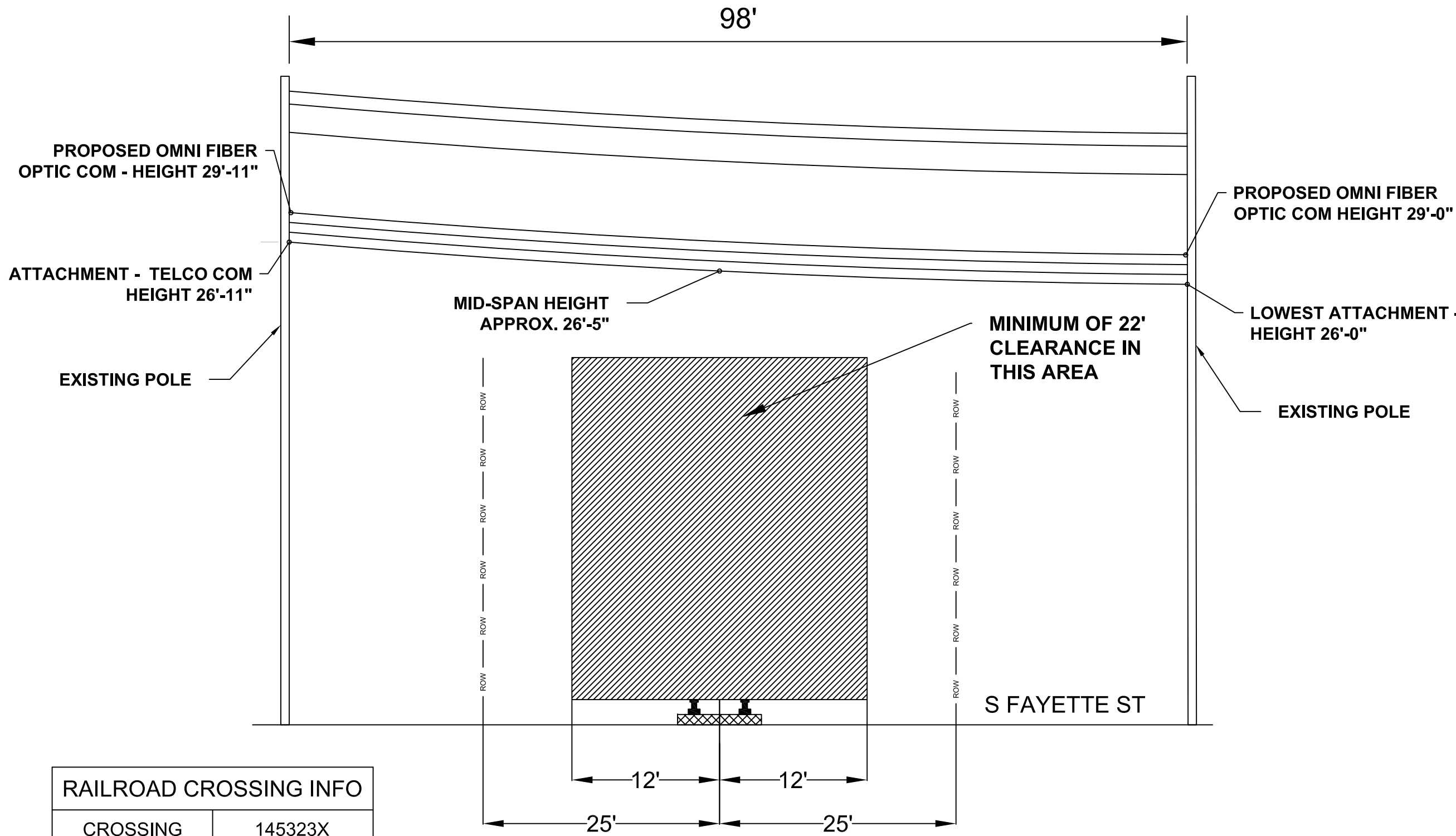
REVISIONS			
REV	DATE	DESCRIPTION	DRAFTER
B	1/13/25	Final Construction Prints	TAT

FINAL CONSTRUCTION DRAWING

UTE14/UTW14 - RR CROSSING - AERIAL
SOUTHWEST PENNSYLVANIA RAILROAD
UNIONTOWN CITY RR R/W

SHEET TITLE
PROFILE VIEW - UTE14/UTW14 RR CROSSING

SHEET NUMBER
SHEET 2 OF 2



RAILROAD CROSSING INFO	
CROSSING	145323X
MILE POST	0071.20
LATITUDE	39.897358
LONGITUDE	-79.722713

1 PROFILE VIEW - UTE14/UTW14 RAILROAD CROSSING
SCALE: NTS



RE: LL/T1