



165 Beach Lake Highway

Honesdale, Pennsylvania 18431

January 23, 2025

Ms. Rosemary Chiavetta, Secretary
Pennsylvania Public Utility Commission
P.O. Box 3265
Harrisburg, PA 17105-3265

**RE: A-2025-3052982 – REVISED PLAN AND PROFILE
S. GREENWOOD STREET
READING, BLUE MOUNTAIN & NORTHERN RAILROAD
BOROUGH OF TAMAQUA
COUNTY OF SCHUYLKILL**

Dear Secretary Chiavetta,

Please find attached a corrected plan and profile for the proposed alteration at the Reading Blue Mountain and Northern Crossing #591 783C. The original plan had the incorrect railroad shown.

Please review and provide the appropriate authorization to this office. Should you have any questions please contact this office.

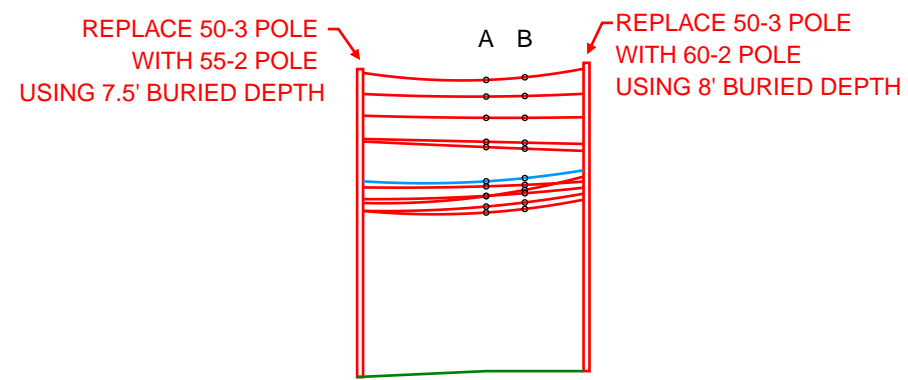
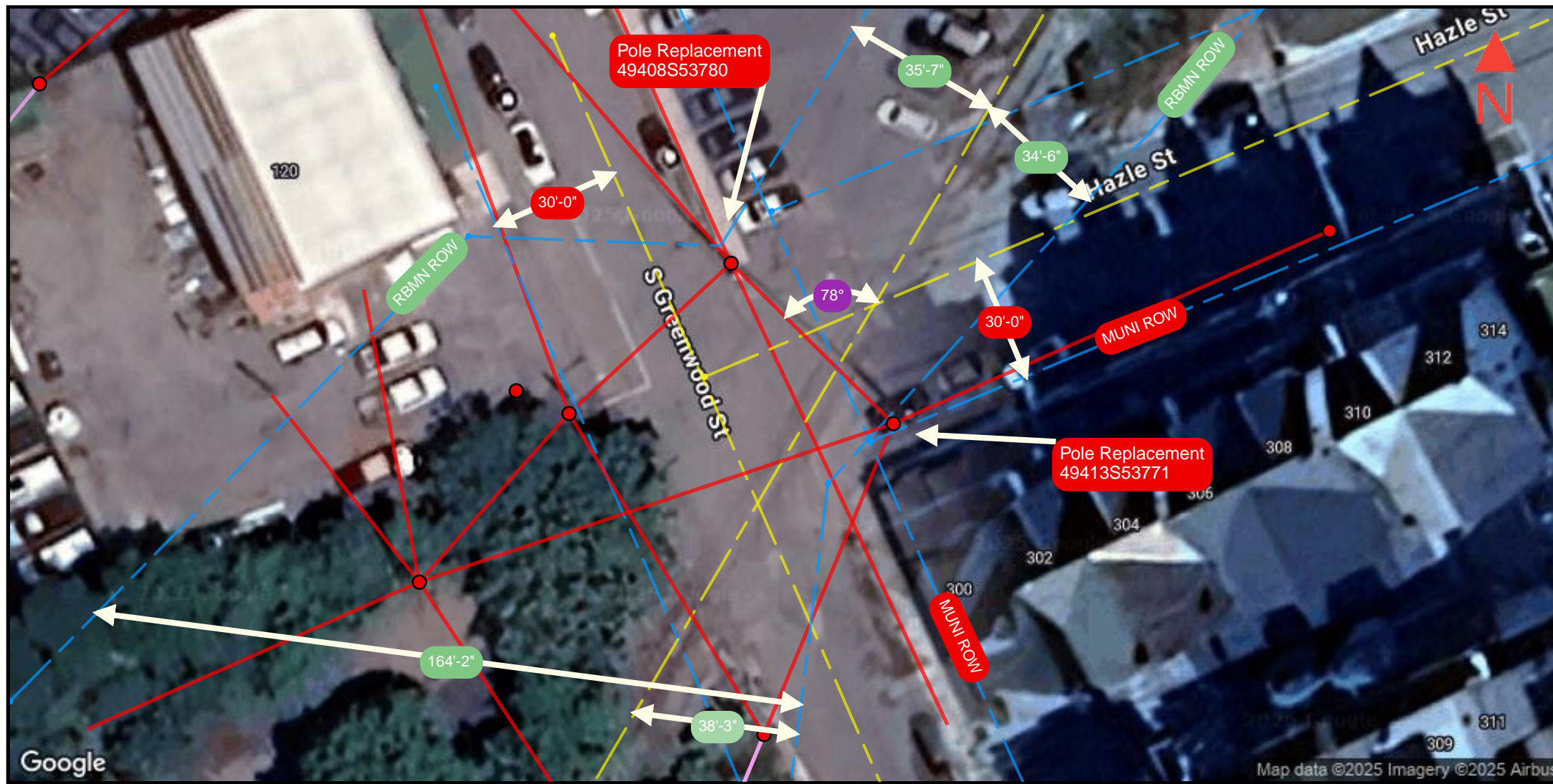
Sincerely,

Dustin Stockholm

Dustin Stockholm
Supervisor - Right of Way

Enclosures

cc: Rodney D. Bender, P.E.
Chief-Bureau of Rail Safety
PA Public Utility Commission
P.O. Box 3265
Harrisburg, PA 17105-3265



CABLES	WIRE SPEC	A			B		
		EXISTING	PROPOSED	MAX SAG	EXISTING	PROPOSED	MAX SAG
Primary		41'-9"	49'-9"	48'-10"	41'-0"	48'-9"	47'-10"
Primary	336 ACSR (26/7)	39'-10"	47'-8"	46'-9"	37'-3"	44'-9"	43'-9"
Primary	336 ACSR (26/7)	36'-4"	43'-10"	42'-11"	34'-3"	41'-4"	40'-5"
Neutral	4 ACSR (6/1)	32'-6"	40'-5"	39'-6"	30'-1"	37'-8"	36'-9"
Service	4 DPLX SERV (6/1)	31'-1"	38'-10"	37'-4"	28'-9"	36'-3"	34'-9"
Proposed CATV Com		--	32'-4"	31'-10"	--	32'-2"	31'-8"
CATV Com		27'-3"	31'-4"	30'-10"	27'-0"	31'-2"	30'-8"
Alarm Cable		26'-6"	29'-11"	29'-6"	26'-3"	30'-0"	29'-7"
Telco Com		26'-2"	29'-10"	29'-6"	26'-0"	29'-9"	29'-5"
Telco Com		24'-3"	28'-0"	27'-9"	24'-3"	28'-2"	27'-11"
Telco Com		23'-3"	27'-0"	26'-8"	23'-2"	27'-1"	26'-9"

✖ RxR Signal
— Aerial
● Pole
— Center line
▲ New Anchor
— Right of way line
▼ Anchor

PPL Electric Utilities

PREPARED BY:

TITLE: 307444	COUNTY: Schuylkill County	STATE: Pennsylvania	DATE: 23-01-2025	DRAWN BY:
PROJECT NO:	PRINT NO: 1	NO. OF PRINTS: 1	ENGINEERED BY: KATAPULT	
FILENAME: EXHIBIT A				