

**BEFORE
THE PENNSYLVANIA PUBLIC UTILITIES COMMISSION**

RE: Application of Comcast Cable Communications Management, LLC, for Approval of the Installation of New Overhead Communications Facilities at a Highway and Railroad Crossing of Delaware-Lackawanna Railroad, and Main Street/SR 507 located in Gouldsboro, Wayne County, Pennsylvania : Docket No. _____
: Comcast No. JB0002023903
:
:
:
:

To the Pennsylvania Public Utility Commission:

Comcast Cable Communications Management, LLC (“Comcast Cable” or “Applicant”), requests that the Pennsylvania Public Utility Commission (“Commission”) approve Comcast Cable’s Application for a rail crossing pursuant to Section 2702(a) of the Pennsylvania Public Utility Code, 66 Pa.C.S. § 2702(a). In support thereof, Comcast Cable submits as follows:

1. The name and address of Applicant:

Comcast Cable Communications Management, LLC
1701 John F Kennedy Boulevard
Philadelphia, PA 19103

2. The name and address of Applicant’s attorney:

Comcast Cable Communications Management, LLC
1701 John F Kennedy Boulevard
Philadelphia, PA 19103
ATTN: General Counsel
Legal_Notices@comcast.com

3. Comcast Cable is a video, internet, and phone service provider in the Commonwealth of Pennsylvania. As such, Comcast Cable has the right to install and maintain its facilities at railroad crossings to provide reliable service to its customers in the Commonwealth of Pennsylvania.

4. The proposed installation will be 48 count fiber and .25” support strand at an at-grade rail crossing located on Main Street/SR 507, Gouldsboro, Wayne County, at the road’s crossing of the railroad facilities of Delaware-Lackawanna Railroad (“DL”) located between existing wooden utility pole No. 274 and existing wooden utility pole No. 275 as shown in Exhibit A. Railroad facilities will not be disturbed during construction of Comcast Cable’s new facilities. Construction of this facility is anticipated to begin as soon as approval is obtained. Construction will take approximately one (1) day to complete.

5. The cost of the construction of the coaxial cable and support strand is approximately one thousand dollars (\$1000.00). Comcast Cable will bear the cost of this construction. Comcast Cable will be responsible for installing, maintaining, and inspecting the facilities.
6. The parties that may be affected by the proposed facilities are as follows: the Pennsylvania Department of Transportation, Wayne County, Gouldsboro, and DL Railroad. The Applicant has served a copy of this Application upon the parties referenced, as shown on the attached Certificate of Service.
7. The installation of the new facility will be used to boost and extend Comcast Cable's service in the immediate and surrounding area. The proposed midspan clearance height of 31'-2" over and across DL property and Main Street/SR 507 leaves ample space for train, traffic, and pedestrian operation.

WHEREFORE, Comcast Cable Communications Management, LLC, requests that the Pennsylvania Public Utility Commission approve the rail crossing described herein on or before March 18, 2025.

Respectfully submitted,

Dated: February 18, 2025

By: Tabatha Smith

Tabatha Smith – Lead Engineering Coordinator, Railroad Group
Americomm LLC, Business Partner of Comcast Cable
21 State Avenue, Suite 1
Carlisle, PA 17013
(717) 408 – 9112
tabatha@americomm-llc.com



21 State Ave., Ste. 1, Carlisle, PA 17013

Tabatha Smith
Lead Engineering Coordinator, Railroad Group

(717) 408 – 9112
tabatha@americomm-llc.com

February 18, 2025

VIA ELECTRONIC FILING

Rosemary Chiavetta, Secretary
Pennsylvania Public Utility Commission
400 North Street
Harrisburg, PA 17120

RE: Application of Comcast Cable Communications Management, LLC, for Approval of the Installation of New Overhead Communications Facilities at a Highway and Railroad Crossing of Delaware-Lackawanna Railroad and Main Street/SR 507 located in Gouldsboro, Wayne County, Pennsylvania; Docket No. _____

Dear Secretary Chiavetta:

Enclosed please find the Application of Comcast Communications Management, LLC, for the approval of the installation of new 48 count fiber and .25" support strand crossing over and across property owned by Delaware-Lackawanna Railroad and Main Street/SR 507 located in Gouldsboro, Wayne County, Pennsylvania. Copies of the Application have been served in accordance with the attached Certificate of Service.

Very truly yours,

Tabatha Smith
Tabatha Smith

Enclosure

Cc: Application
Exhibit A
Verification
Certificate of Service

**BEFORE
THE PENNSYLVANIA PUBLIC UTILITIES COMMISSION**

RE: Application of Comcast Cable Communications Management, LLC, for Approval of the Installation of New Overhead Communications Facilities at a Highway and Railroad Crossing of Delaware-Lackawanna Railroad, and Main Street/SR 507 located in Gouldsboro, Wayne County, Pennsylvania : Docket No. _____
: Comcast No. JB0002023903
:
:
:
:

CERTIFICATE OF SERVICE

I hereby certify that I have this day served a true copy of the foregoing document upon the entities listed below in accordance with the requirements of 52 Pa. Code §1.54 (relating to service):

Pennsylvania Department of Transportation
ROW & Utility Division, Bureau of Design
P.O. Box 3362
Harrisburg, PA 17105-3362
danleonard@pa.gov

Lorie Ransom
Delaware-Lackawanna Railroad
280 Cliff Street
Scranton, PA 18503
lransom@gvtrail.com

Pennsylvania Department of Transportation
Karen Cummings
Office of Chief Counsel
P.O. Box 8212
Harrisburg, PA 17105-8212
kcummings@pa.gov

Penelec
Attn: Keith Gardner
311 Industrial Park Road
Johnstown, PA 15904
kgardner@firstenergycorp.com

PennDOT District 4
Sophia Robinson
55 Keystone Industrial Park
Dunmore, PA 18512
sorobinson@pa.gov

Verizon Pennsylvania, Inc.
900 Race St. – 6th Floor
Philadelphia, PA 19107
Chris.j.atkinson@verizon.com

Wayne County Department of Planning
925 Court Street
Honesdale, PA 18431
570-253-5970, ext. 4060
crickard@waynecountypa.gov

Comcast Cable Communications Management, LLC
Attn: Americomm LLC
21 State Avenue, Suite 1
Carlisle, PA 17013
tabatha@americomm-llc.com

Delaware-Lackawanna Railroad
Attn: Charlene Doyle
280 Cliff Street
Scranton, PA 18503
cdoyle@pnrra.org

Dated: February 18, 2025

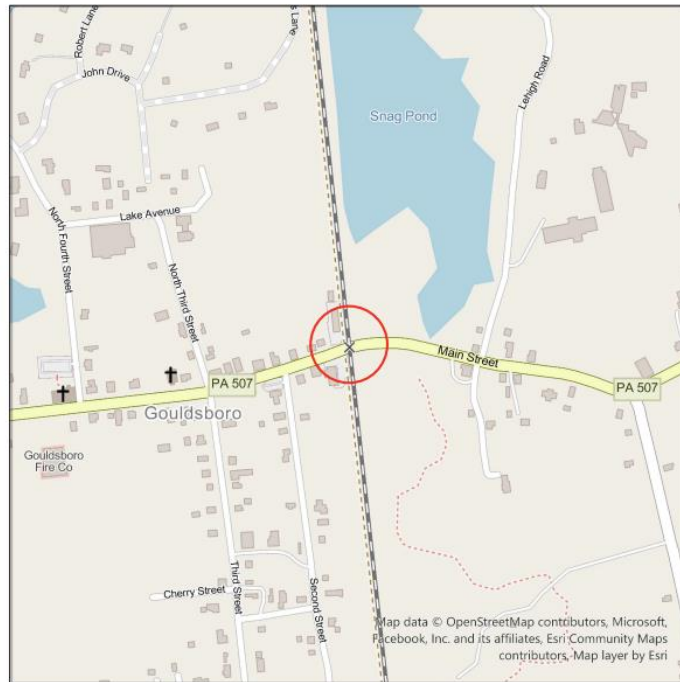
By: Tabatha Smith
Tabatha Smith

COMCAST CABLE COMMUNICATIONS MANAGEMENT, LLC CONSTRUCTION PLANS

MAIN STREET GOULDSBORO - WAYNE COUNTY

LEGEND

Ex.	Existing
R/S	Railroad Spike
M.P.	Railroad Mile Post
M.S.	Mag-Spike
M.L.	Mag-Nail
C.M.	Concrete Monument
T.M.P.	Tax Map & Parcel
	(Municipal Street)
---	Right of Way Line
---	Salts Boundary
○	Utility Pole
●	Proposed Core Bore
---	Proposed Underground Line
□	Proposed CATV Vault
○	Light Pole/ Lamp
—	Day Wire
—	Overhead Electric
—	Overhead Telephone
—	Overhead CATV
—	Underground Electric
—	Underground Telephone
—	Underground CATV
□	Electric Junction Box
□	Electric Transformer
□	Electric Meter
□	Electric Manhole
□	Telephone Manhole
□	Telephone Box
□	CATV Manhole
□	CATV Pedestal
□	Stormwater Pipe
□	Stormwater Manhole
□	Stormwater Inlet
—	Water Line
□	Water Manhole
□	Water Valve
□	Water Msh
□	Fire Hydrant
—	Sanitary Sewer Line
□	Sanitary Sewer Manhole
□	Gas Valve
□	Gas Meter
—	Gas Line
—	Clearcut
—	Fence Line
□	Sign
□	Handicapped Symbol
□	Concrete Monument
□	Mailbox



GENERAL NOTES:

1. THE LOCATIONS OF UNDERGROUND UTILITIES AS SHOWN HEREON ARE BASED ON ABOVEGROUND STRUCTURES AND RECORD DRAWINGS PROVIDED TO THE SURVEYOR. LOCATIONS OF UNDERGROUND UTILITIES/STRUCTURES/SERVICES MAY VARY FROM LOCATIONS SHOWN HEREON. ADDITIONAL BURIED UTILITIES/STRUCTURES/SERVICES MAY BE ENCOUNTERED. NO EXCAVATIONS WERE MADE DURING THE PROCESS OF THE SURVEY TO LOCATE BURIED UTILITIES. THE LOCATIONS OF UNDERGROUND UTILITIES ARE APPROXIMATE AND MUST BE VERIFIED IN THE FIELD PRIOR TO CONSTRUCTION. TO COMPLY WITH REQUIREMENTS OF PENNSYLVANIA ACT 287 OF 1974 AS AMENDED ENTITLED: "UNDERGROUND UTILITY LINE PROTECTION LAW."
2. EXISTING UTILITIES AND STORM DRAINAGE SYSTEMS ARE SHOWN TO ALERT THE PERMITTEE/CONTRACTOR TO THEIR PRESENCE AND THE PERMITTEE/CONTRACTOR IS SOLELY RESPONSIBLE FOR DETERMINING ACTUAL LOCATIONS AND ELEVATIONS OF ALL UTILITIES AND STORM DRAINAGE SYSTEMS INCLUDING SERVICES. APPROXIMATE LOCATIONS OF EXISTING UTILITIES AND SURFACE FEATURES ARE BASED ON FIELD SURVEY BY AMERICOMM-LLC AND/OR PA DESIGN ONE-CALL.
3. THE PERMITTEE/CONTRACTOR MUST CONTACT THE PENNSYLVANIA ONE-CALL SYSTEM AT 1-800-242-1776, THREE WORKING DAYS PRIOR TO THE START OF WORK TO HAVE ALL UTILITIES MARKED IN THE WORK AREA.

SHEET INDEX

SHEET 1	TITLE SHEET
SHEET 2	PROPOSED PLAN VIEW
SHEET 3	PROPOSED PROFILE VIEW

CALL BEFORE YOU DIG.

PA STATE LAW REQUIRES 3 WORKING DAYS NOTICE FOR CONSTRUCTION PHASE AND 10 WORKING DAYS NOTICE IN DESIGN STAGE

PENNSYLVANIA ONE CALL SYSTEM, INC. 1-800-242-1776



Americom-LLC Corporate Office
21 State Avenue Suite 101
Carlisle, PA 17013
717-408-9116

COMCAST CORPORATION

MAIN STREET,
GOULDSBORO, PA 18424

FIELDED _____

DRAWN H.W.

SITE LOCATION

APPROVED _____

REVISIONS

NO.	DATE	DESCRIPTION	CKD	APP



**PROPOSED
RAILROAD CROSSING**

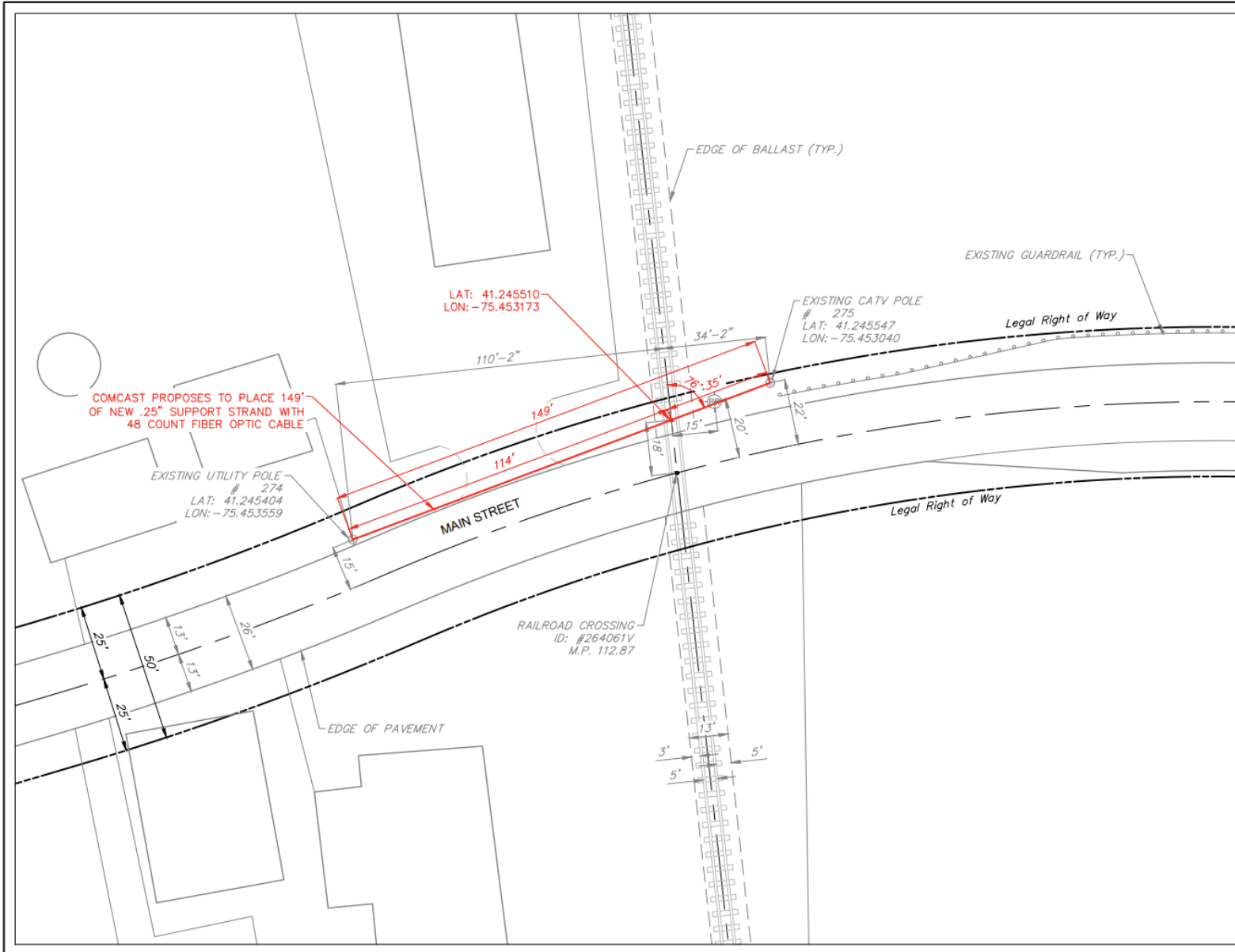
VICINITY MAP SCALE: 1" = 750'

COMCAST 1701 JFK BOULEVARD
PHILADELPHIA, PA 19103

**AERIAL CABLE CROSSING
OVER DELAWARE LACKAWANNA RAILROAD
AT MAIN STREET,
GOULDSBORO, WAYNE COUNTY, PA**

**NORTH ±18' TO AAR/DOT #264061V &
M.P 112.87**

**LOCATION: MAIN STREET,
GOULDSBORO, PA**
LATITUDE: 41.845610
LONGITUDE: -76.463173
DRAWING NO: SHEET 1 OF 3
DRAWING DATE: 02/04/2025
DRAWING SCALE: 1 INCH = 30 FEET



AmeriComm
Utility Specialist

AmeriComm-LLC Corporate Office
21 State Avenue Suite 101
Carlisle, PA 17013
717-408-9116

COMCAST CORPORATION

MAIN STREET,
GOULDSBORO, PA 18424

FIELDED _____
DRAWN H.W.
APPROVED _____

SITE LOCATION

REVISIONS

NO.	DATE	DESCRIPTION	CKD	APP

PROPOSED PLAN VIEW

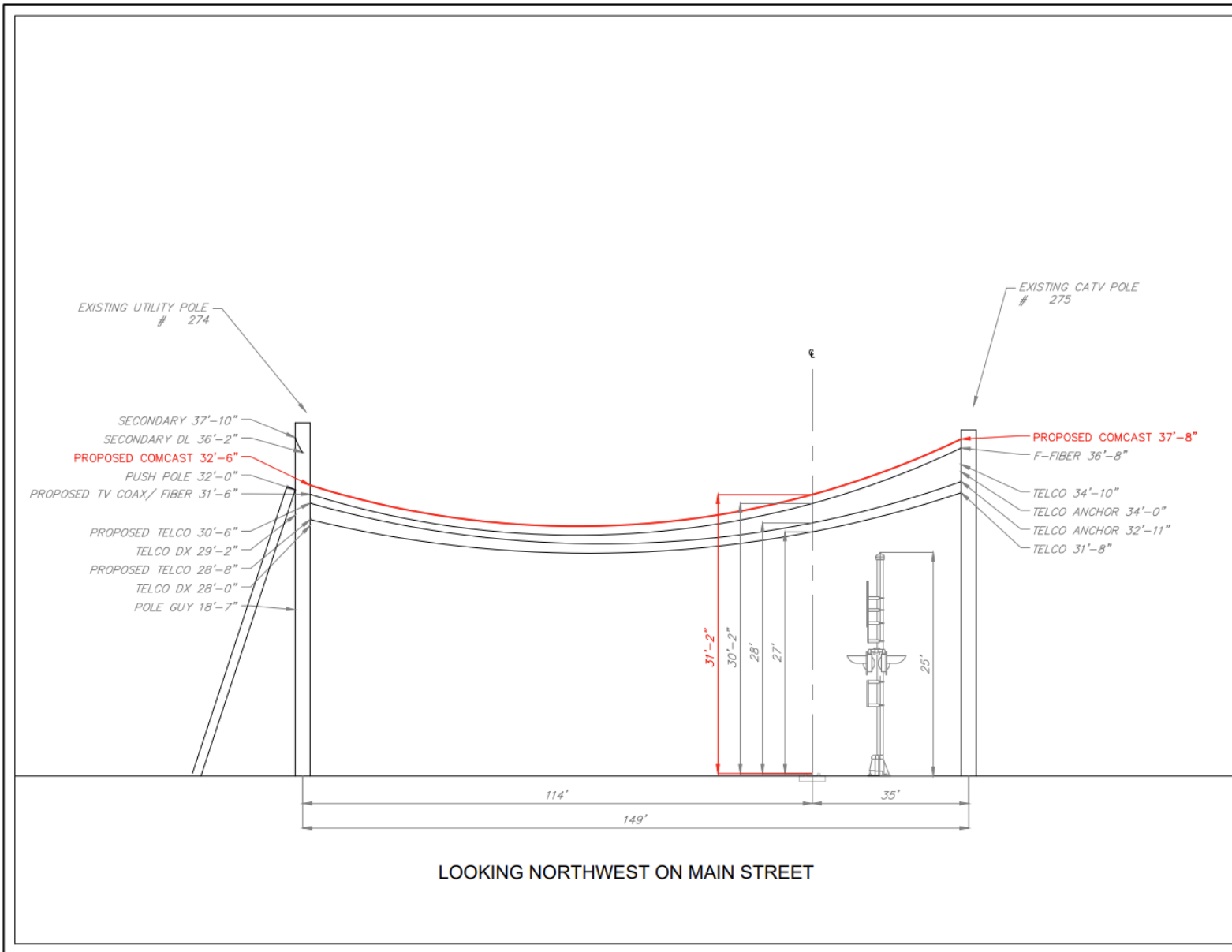
SCALE: 1" = 30'
GRAPHICAL SCALE IN FEET:

COMCAST 1701 JFK BOULEVARD
PHILADELPHIA, PA 19103

**AERIAL CABLE CROSSING
OVER DELAWARE LACKAWANNA RAILROAD
AT MAIN STREET,
GOULDSBORO, WAYNE COUNTY, PA**

NORTH ±18' TO AAR/DOT #264061V &
M.P. 112.87

LOCATION: MAIN STREET,
GOULDSBORO, PA
LATITUDE: 41.245510
LONGITUDE: -75.453173
DRAWING NO: **SHEET 2 OF 3**
DRAWING DATE: 02/04/2025
DRAWING SCALE: 1 INCH = 30 FEET



Americomm-LLC Corporate Office
 21 State Avenue Suite 101
 Carlisle, PA 17013
 717-408-9116

COMCAST CORPORATION

MAIN STREET,
 GOULDSBORO, PA 18424

FIELDED _____
 DRAWN H.W. _____
 APPROVED _____

SITE LOCATION

REVISIONS

NO.	DATE	DESCRIPTION	CKD	APP

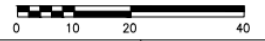


PROPOSED PROFILE VIEW

VERTICAL SCALE: 1" = 10'
 GRAPHICAL SCALE IN FEET:



HORIZONTAL SCALE: 1" = 20'
 GRAPHICAL SCALE IN FEET:



COMCAST 1701 JFK BOULEVARD
 PHILADELPHIA, PA 19103

AERIAL CABLE CROSSING
 OVER DELAWARE LACKAWANNA RAILROAD
 AT MAIN STREET,
 GOULDSBORO, WAYNE COUNTY, PA

NORTH ±18' TO AAR/DOT #264061V &
 M.P. 112.87

LOCATION: MAIN STREET,
 GOULDSBORO, PA
 LATITUDE: 41.845510
 LONGITUDE: -75.458173
 DRAWING NO: SHEET 3 OF 3
 DRAWING DATE: 02/04/2005
 DRAWING SCALE: 1 INCH = 20 FEET / 10 FEET

**BEFORE
THE PENNSYLVANIA PUBLIC UTILITIES COMMISSION**

RE: Application of Comcast Cable Communications : Docket No. _____
Management, LLC, for Approval of the Installation of : Comcast No. JB0002023903
New Overhead Communications Facilities at a :
Highway and Railroad Crossing of Delaware- :
Lackawanna Railroad, and Main Street/SR 507 located :
in Gouldsboro, Wayne County, Pennsylvania :

VERIFICATION

I, Tabatha Smith, Lead Engineering Coordinator for Americomm LLC, a Business Partner of Comcast Cable, hereby state that the facts set forth in the Application of Comcast Cable Communications Management, LLC, are true and correct to the best of my knowledge, information, and belief. The statements herein are made subject to the penalties of 18 Pa.C.S. § 4904 relating to the unsworn falsification to authorities.

Dated: February 18, 2025

By: Tabatha Smith

Tabatha Smith - Lead Engineering Coordinator, Railroad Group
Americomm LLC, Business Partner of Comcast Cable
21 State Avenue, Suite 1
Carlisle, PA 17013
(717) 408 – 9112
tabatha@americomm-llc.com