

R.J. CORMAN RAILWAY PERMIT
PERMIT SKETCH
1A6JB0G

METHOD: AERIAL CROSSING
MUNICIPALITY: MAHAFFEY
COUNTY: CLEARFIELD
CROSSING NUMBER: 506107D
LAT: 40.8676111
LONG: -78.7220833

**FLAGGING
REQUIRED**



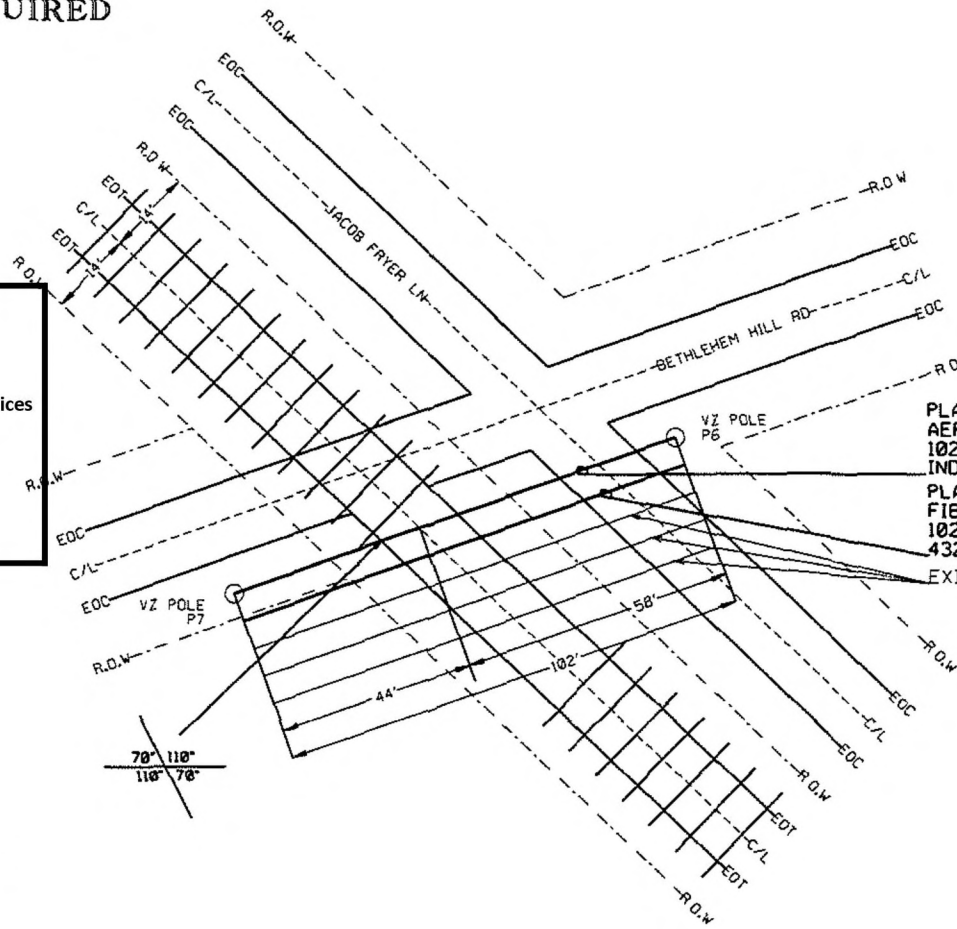
CERTIFIED CORRECT PLANS

Will M. D. PE
Professional Engineer

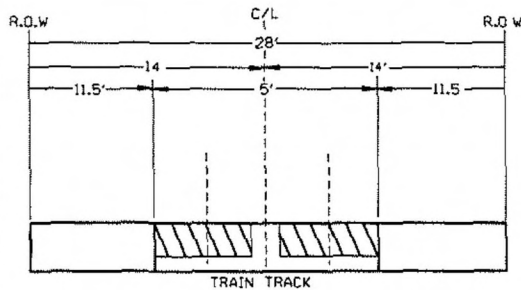
Approved by Bureau of Technical Utility Services

PA PUBLIC UTILITY COMMISSION

ATTEST *Rosemary Chiverton*
Secretary

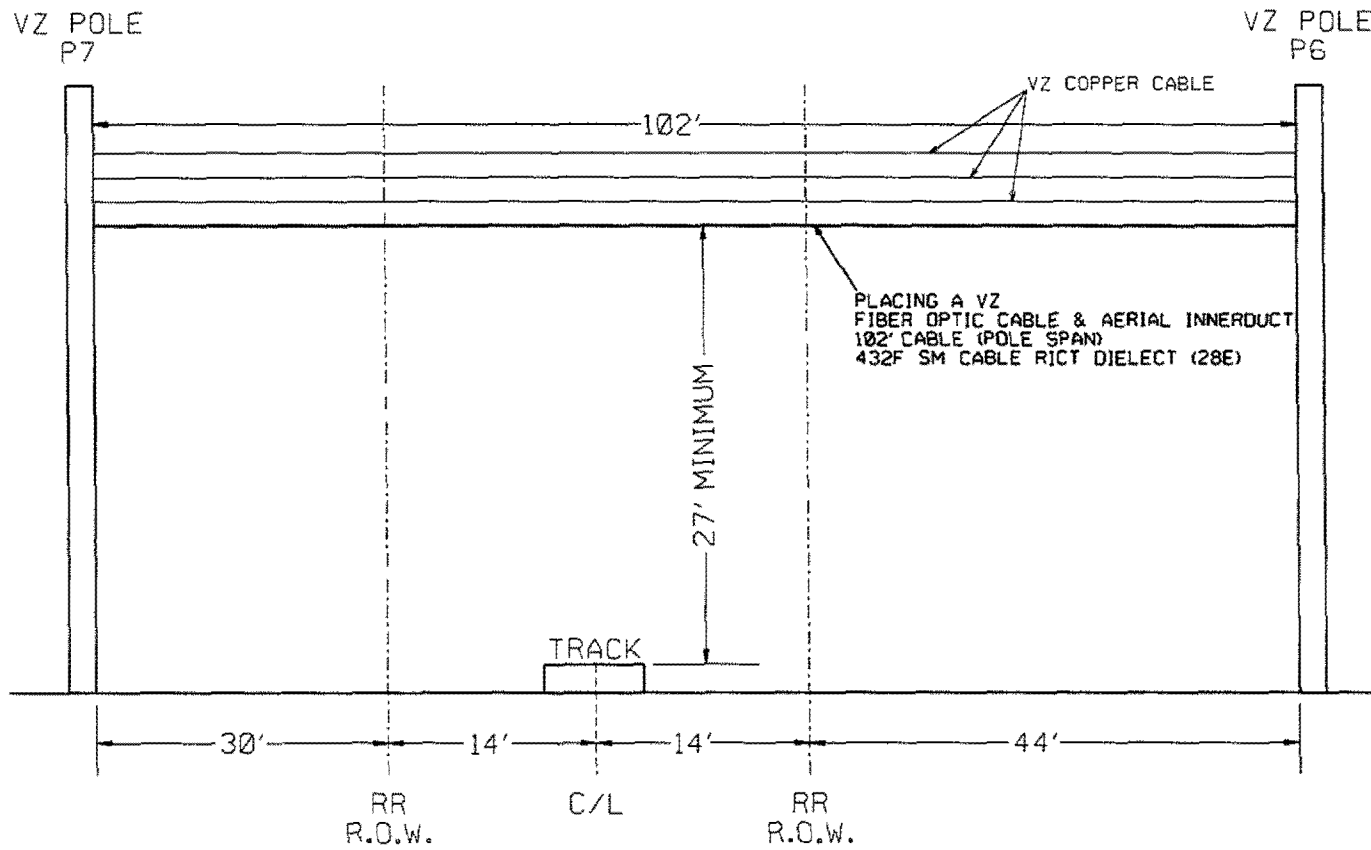


PLACING A VZ
AERIAL INNERDUCT
102' INNERDUCT (SPAN)
INDT 4-WAY 1.25 1
PLACING A VZ
FIBER OPTIC CABLE
102' CABLE (POLE SPAN)
432F SM CABLE RICT DIELECT (28E)
EXISTING VZ COPPER CABLE



PRINT 1 OF 2
NOT TO SCALE

R.J. CORMAN RAILWAY PERMIT
PERMIT SKETCH
1A6JB0G



PRINT 2 OF 2
NOT TO SCALE