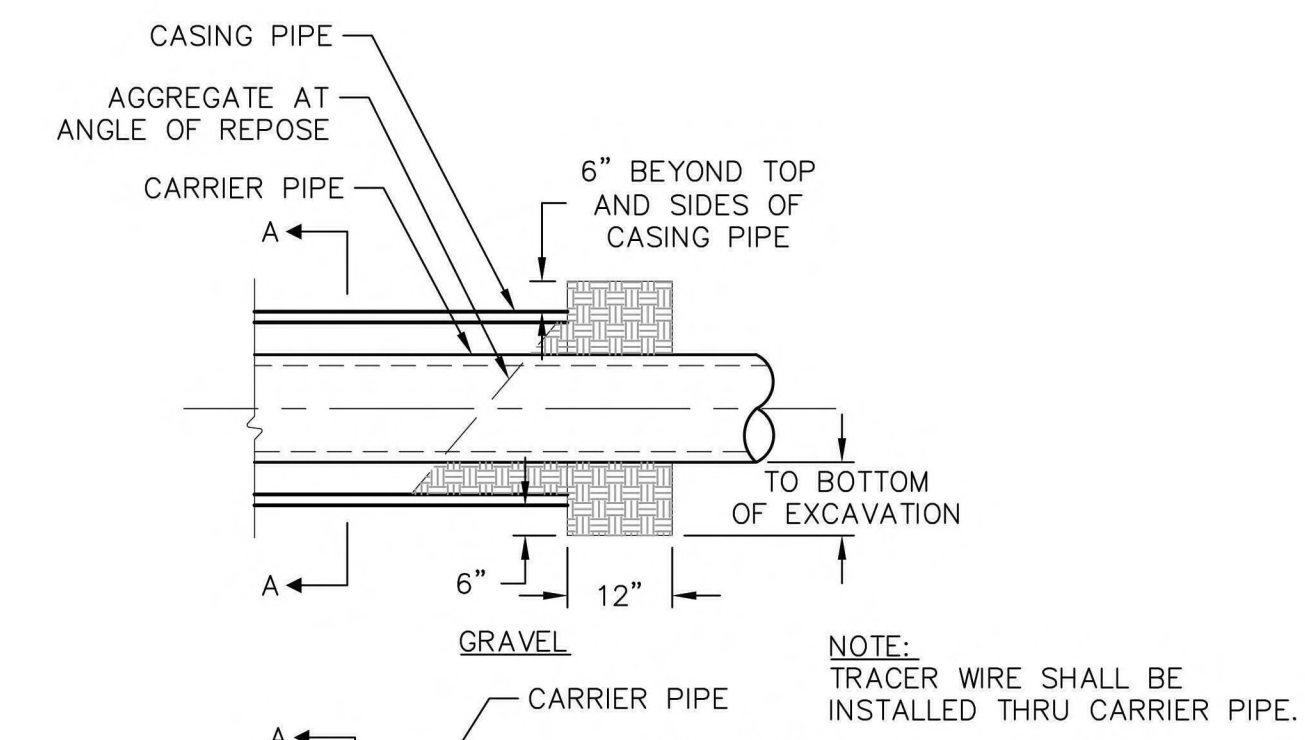
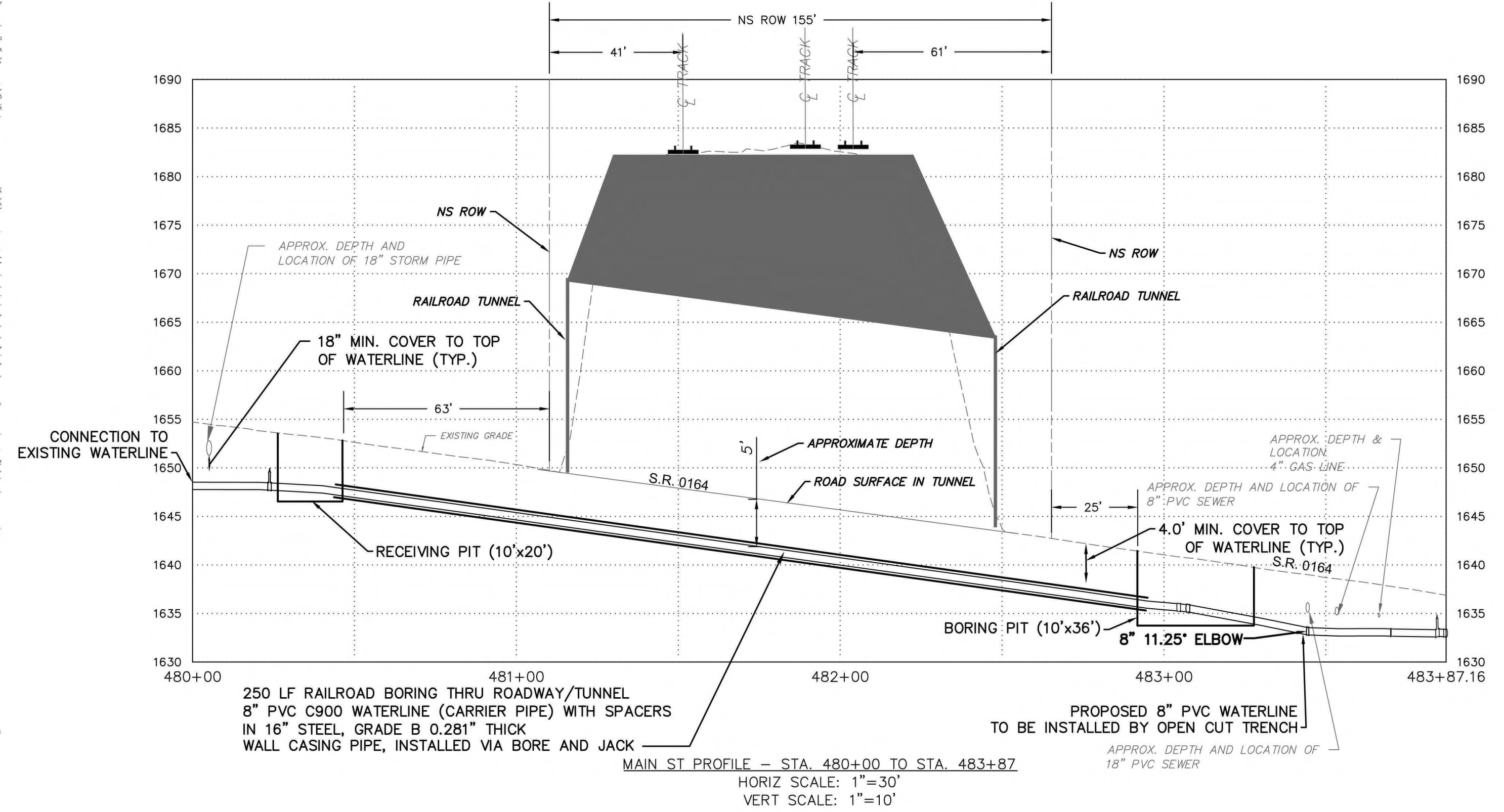
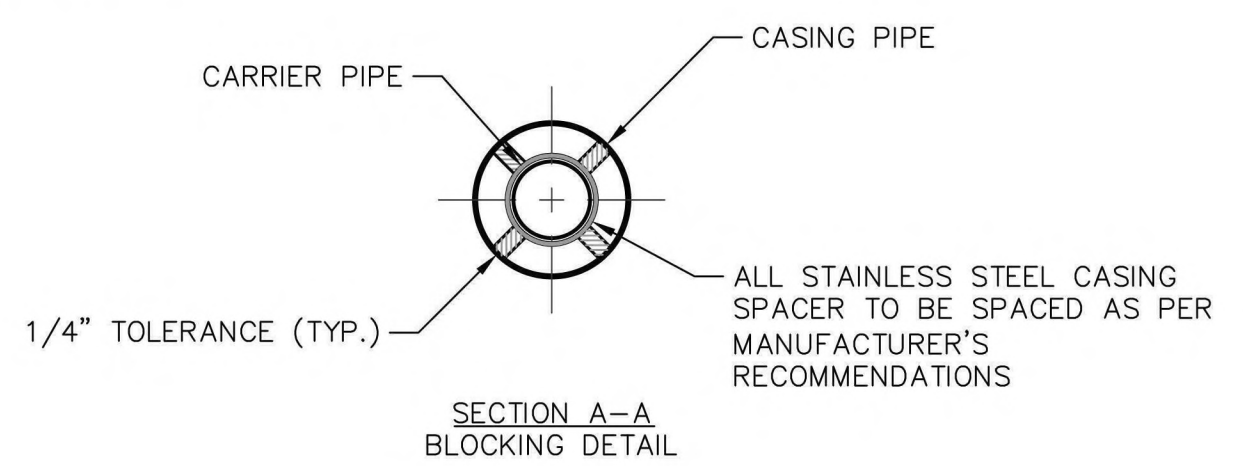


**GENERAL NOTES:**

1. CONTRACTOR SHALL FOLLOW ALL REQUIREMENTS OF NORFOLK SOUTHERN'S NSCE-8 SPECIFICATIONS.
2. PIPE LINE AND CROSSING TO BE INSTALLED AND MAINTAINED IN ACCORDANCE WITH LAST APPROVED AMERICAN RAILWAY ENGINEERING AND MAINTENANCE OF WAY ASSOCIATION SPECIFICATIONS FOR PIPELINES CONVEYING FLAMMABLE AND NON-FLAMMABLE SUBSTANCES.
3. BLASTING NOT PERMITTED.
4. ALL OVERBORE CROSSING NS RAILROAD TRACKS SHALL BE LIMITED TO 2" OVERBORE PER AREMA AND NSCE GUIDELINES.
5. PIPE LINE LOCATIONS INSIDE THE NS ROW WHERE THE PIPE IS NOT DIRECTLY BENEATH ANY TRACK, THE DEPTH FROM GROUND SURFACE MUST BE A MINIMUM OF 4- FEET PER NSCE-8 SPECIFICATIONS (UNLESS NOTED OTHERWISE).
6. PER NSCE-8 ALL JACKING OPERATIONS MUST BE EXECUTED ON A CONTINUOUS NON-STOP 24/7 BASIS UNTIL COMPLETE.

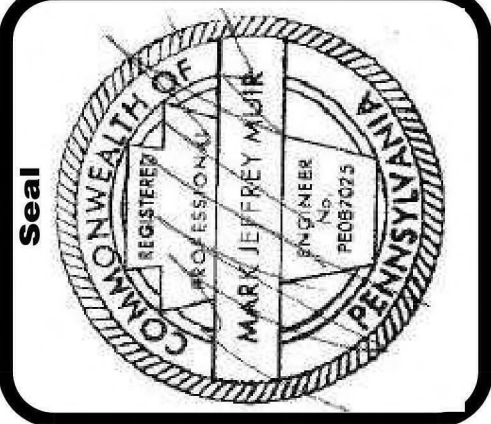


- NOTE:**
1. RUBBER SEAL TO BE LOCATED AT UPPER END OF CASING AND GRAVEL SEAL AT LOWER END OF CASING.



**RAIL ROAD BORING - DETAIL**  
NOT TO SCALE

**CERTIFIED CORRECT PLANS**  
Professional Engineer  
Approved by Bureau of Technical Utility Services  
PA PUBLIC UTILITY COMMISSION  
ATTEST: *Matthew L. Hume* 04/29/2025  
Secretary Docket: A-2025-3054059



| No. | Date | Sheet Revisions |
|-----|------|-----------------|
|     |      |                 |
|     |      |                 |

|             |                |
|-------------|----------------|
| Scale       | AS NOTED       |
| Date        | 02/25/2025     |
| Drawn By    | JFN            |
| Checked By  | JCB            |
| Project No. | 0622-23-556    |
| File No.    | 23556-C-RR-005 |

**THE EADS GROUP**  
ENGINEERING ARCHITECTURE AND DESIGN SERVICES  
phones: 814.535.5388 fax: 814.535.7654  
www.eadsgrp.com  
WITH OFFICES IN:  
PENNSYLVANIA / MARYLAND / WEST VIRGINIA

**THE MUNICIPAL AUTHORITY OF THE BOROUGH OF PORTAGE**  
CONTRACT NO. 0233-25-01  
**WATERLINE AND WATER METER REPLACEMENT PROJECT**  
**RAILROAD TUNNEL CROSSING**

**Drawing No.**  
**C-5.02**