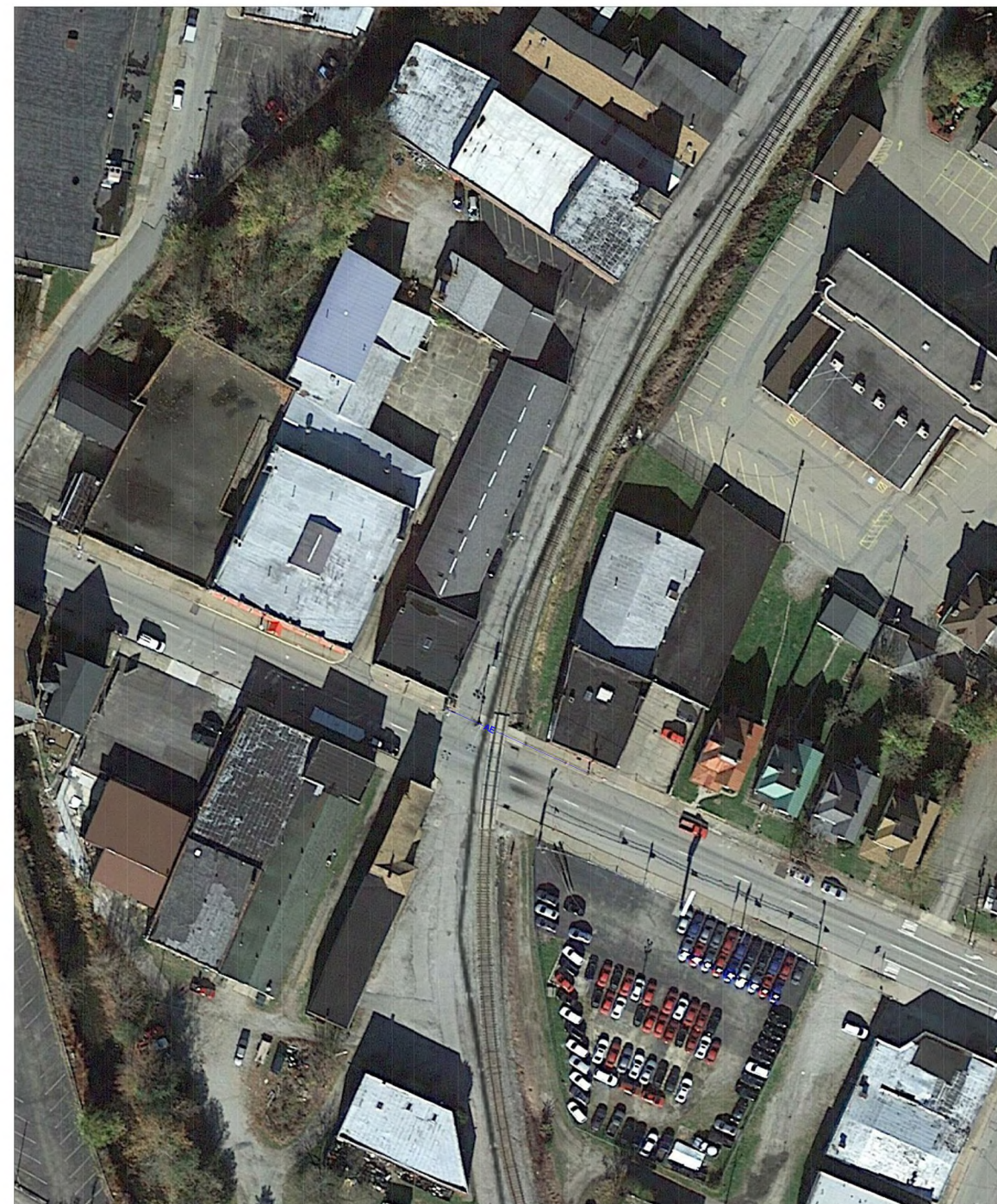


1 VICINITY MAP
SCALE: NTS



2 AERIAL MAP
SCALE: NTS

NOTES:

- THIS DRAWING IS BASED ON GIS MAPPING AND AERIAL IMAGES, AND IS NOT BASED ON AN ACTUAL BOUNDARY SURVEY. CONTRACTOR SHALL FIELD VERIFY ALL EXISTING CONDITIONS PRIOR TO COMMENCEMENT OF CONSTRUCTION.
- OPEN CUT CONSTRUCTION THROUGH EXISTING PAVEMENT, I.E. ROADWAYS, PARKING AREAS, SIDEWALKS WILL NOT BE ALLOWED. CONSTRUCTION UNDER EXISTING PAVEMENTS WILL BE REQUIRED TO BE INSTALLED WITH DIRECTIONAL BORING TECHNIQUE.
- THE CONTRACTOR SHALL REPAIR ANY PAVED AREAS DAMAGED DURING CONSTRUCTION PER LOCAL JURISDICTION'S SPECIFICATIONS. CONTRACTOR SHALL MAINTAIN THE ORIGINAL SLOPE OF THE SIDEWALK TO MATCH EXISTING CONSTRUCTION. CONTRACTOR TO FIELD VERIFY THE EXISTENCE OF UNDERGROUND UTILITIES THROUGH NON-DESTRUCTIVE MEANS

MAINTENANCE TRAFFIC CONTROL NOTES:

- ALL WORK ASSOCIATED WITH THE INSTALLATION OF THE PROPOSED FIBER CABINET, INCLUDING BUT NOT LIMITED TO, THE CABINET, ELECTRIC, FIBER, LANDSCAPING RESTORATION, ETC, THE CONTRACTOR SHALL PROVIDE AND MAINTAIN TRAFFIC CONTROL IN ACCORDANCE WITH THE PENNSYLVANIA DEPARTMENT OF TRANSPORTATION MANUAL OF UNIFORM TRAFFIC CONTROL DEVICES (MUTCD), LATEST EDITION.
- FOR THIS INSTALLATION, THE CONTRACTOR SHALL PROVIDE AND MAINTAIN TRAFFIC CONTROL PER THE MAINTENANCE OF THE TEMPORARY TRAFFIC CONTROL PLAN AS SHOWN ON SHEET MOT-1.

LEGEND

—	ROW	—	RIGHT OF WAY	—	STREET SIGN
—	OH/F	—	OVERHEAD FIBER	—	FIRE HYDRANT
—	OH/P	—	OVERHEAD POWER	—	CATCH BASIN
—	GAS	—	UNDERGROUND GAS	—	UTILITY POLE
—	WATER	—	UNDERGROUND WATER	—	LIGHT POST
—	SEWER	—	UNDERGROUND SEWER	—	SANITARY
—		—	EXISTING FENCE	—	WATER VALVE
—		—	CENTERLINE	—	MAN HOLE
				—	PARKING METER
				—	LIGHT & UTILITY POLE
				—	POLE ANCHOR



REVISIONS

REV	DATE	DESCRIPTION	DRAFTER
B	1/13/25	Final Construction Prints	TAT

A-2024-3051964

FINAL CONSTRUCTION

DRAWING

CERTIFIED CORRECT PLANS

Andrew P. ...
Professional Engineer
Approved by Bureau of Technical Utility Services

PA PUBLIC UTILITY COMMISSION

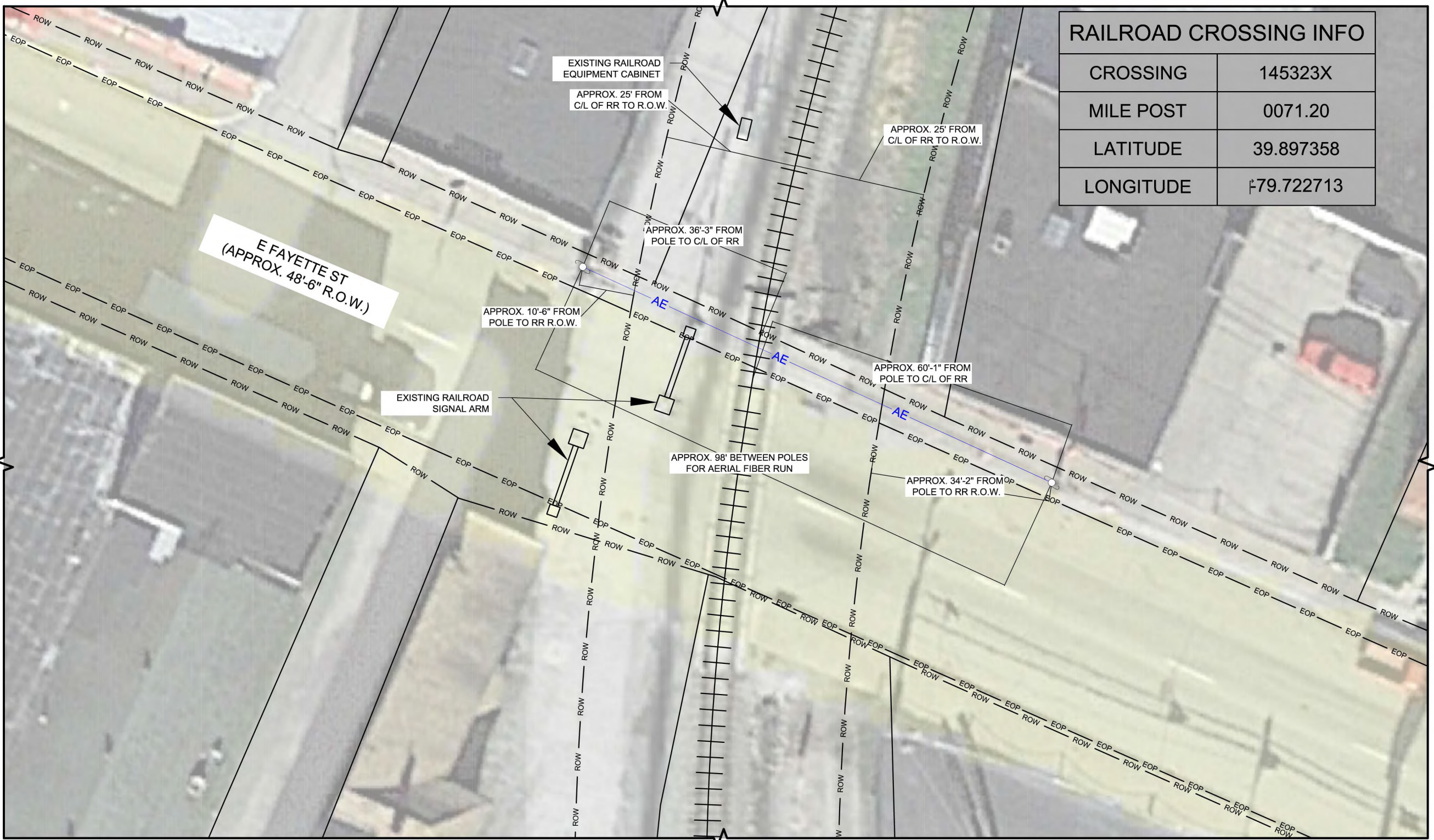
ATTEST *Matthew L. ...*
Secretary

UTE14/UTW14 - RR CROSSING
- AERIAL

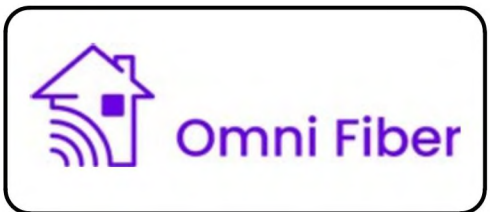
SOUTHWEST PENNSYLVANIA RAILROAD
UNIONTOWN CITY RR RW

SHEET TITLE
PLAN VIEW - UTE14/UTW14
- RR - AERIAL

SHEET NUMBER
COVER SHEET



RAILROAD CROSSING INFO	
CROSSING	145323X
MILE POST	0071.20
LATITUDE	39.897358
LONGITUDE	-79.722713



REVISIONS			
REV	DATE	DESCRIPTION	DRAFTER
B	1/13/25	Final Construction Prints	TAT

FINAL CONSTRUCTION
DRAWING

UTE14/UTW14 - RR CROSSING
- AERIAL

SOUTHWEST PENNSYLVANIA RAILROAD
UNIONTOWN CITY RR R/W

SHEET TITLE
PLAN VIEW - UTE14/UTW14
- RR - AERIAL

SHEET NUMBER
SHEET 1 OF 2

- NOTES:**
- THIS DRAWING IS BASED ON GIS MAPPING AND AERIAL IMAGES, AND IS NOT BASED ON AN ACTUAL BOUNDARY SURVEY. CONTRACTOR SHALL FIELD VERIFY ALL EXISTING CONDITIONS PRIOR TO COMMENCEMENT OF CONSTRUCTION.
 - OPEN CUT CONSTRUCTION THROUGH EXISTING PAVEMENT, I.E. ROADWAYS, PARKING AREAS, SIDEWALKS WILL NOT BE ALLOWED. CONSTRUCTION UNDER EXISTING PAVEMENTS WILL BE REQUIRED TO BE INSTALLED WITH DIRECTIONAL BORING TECHNIQUE.
 - THE CONTRACTOR SHALL REPAIR ANY PAVED AREAS DAMAGED DURING CONSTRUCTION PER LOCAL JURISDICTION'S SPECIFICATIONS. CONTRACTOR SHALL MAINTAIN THE ORIGINAL SLOPE OF THE SIDEWALK TO MATCH EXISTING CONSTRUCTION. CONTRACTOR TO FIELD VERIFY THE EXISTENCE OF UNDERGROUND UTILITIES THROUGH NON-DESTRUCTIVE MEANS

- MAINTENANCE TRAFFIC CONTROL NOTES:**
- ALL WORK ASSOCIATED WITH THE INSTALLATION OF THE PROPOSED FIBER CABINET, INCLUDING BUT NOT LIMITED TO, THE CABINET, ELECTRIC, FIBER, LANDSCAPING RESTORATION, ETC. THE CONTRACTOR SHALL PROVIDE AND MAINTAIN TRAFFIC CONTROL IN ACCORDANCE WITH THE PENNSYLVANIA DEPARTMENT OF TRANSPORTATION MANUAL OF UNIFORM TRAFFIC CONTROL DEVICES (MUTCD), LATEST EDITION.
 - FOR THIS INSTALLATION, THE CONTRACTOR SHALL PROVIDE AND MAINTAIN TRAFFIC CONTROL PER THE MAINTENANCE OF THE TEMPORARY TRAFFIC CONTROL PLAN AS SHOWN ON SHEET MOT-1.

LEGEND		
— ROW —	RIGHT OF WAY	— STREET SIGN
— OH/F —	OVERHEAD FIBER	— FIRE HYDRANT
— OH/P —	OVERHEAD POWER	— CATCH BASIN
— GAS —	UNDERGROUND GAS	— UTILITY POLE
— WATER —	UNDERGROUND WATER	— LIGHT POST
— SEWER —	UNDERGROUND SEWER	— SANITARY
— —	EXISTING FENCE	— WATER VALVE
— —	CENTERLINE	— MAN HOLE
		— PARKING METER
		— LIGHT & UTILITY POLE
		— POLE ANCHOR





REVISIONS			
REV	DATE	DESCRIPTION	DRAFTER
B	1/13/25	Final Construction Prints	TAT

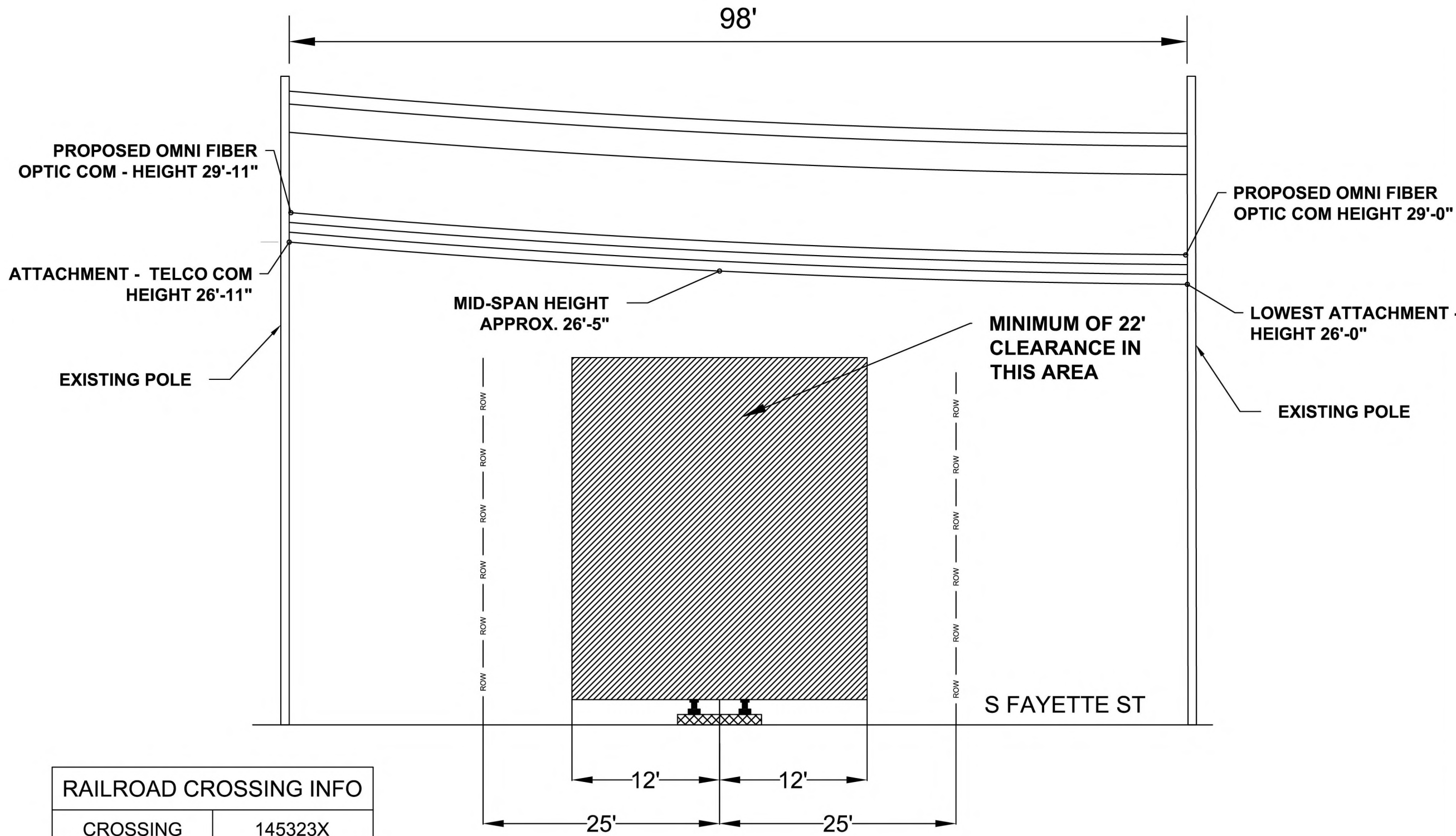
FINAL CONSTRUCTION
DRAWING

UTE14/UTW14 - RR CROSSING
- AERIAL

SOUTHWEST PENNSYLVANIA RAILROAD
UNIONTOWN CITY RR R/W

SHEET TITLE
PROFILE VIEW -
UTE14/UTW14 RR CROSSING

SHEET NUMBER
SHEET 2 OF 2



RAILROAD CROSSING INFO	
CROSSING	145323X
MILE POST	0071.20
LATITUDE	39.897358
LONGITUDE	-79.722713

