



SITE
PENNSWOOD ROAD
40.19372,
-75.310205

SITE LOCATION
 NOT TO SCALE

AMTRAK APPLICATION NO. - PA-MO-963 (A-2023-3045014)

CERTIFIED CORRECT PLANS

 Professional Engineer
 Approved by Bureau of Technical Utility Services
PA PUBLIC UTILITY COMMISSION
 ATTEST **05/02/2025**
 Secretary **Docket: A-2023-3045014**

RETTEW ASSOCIATES, INC.

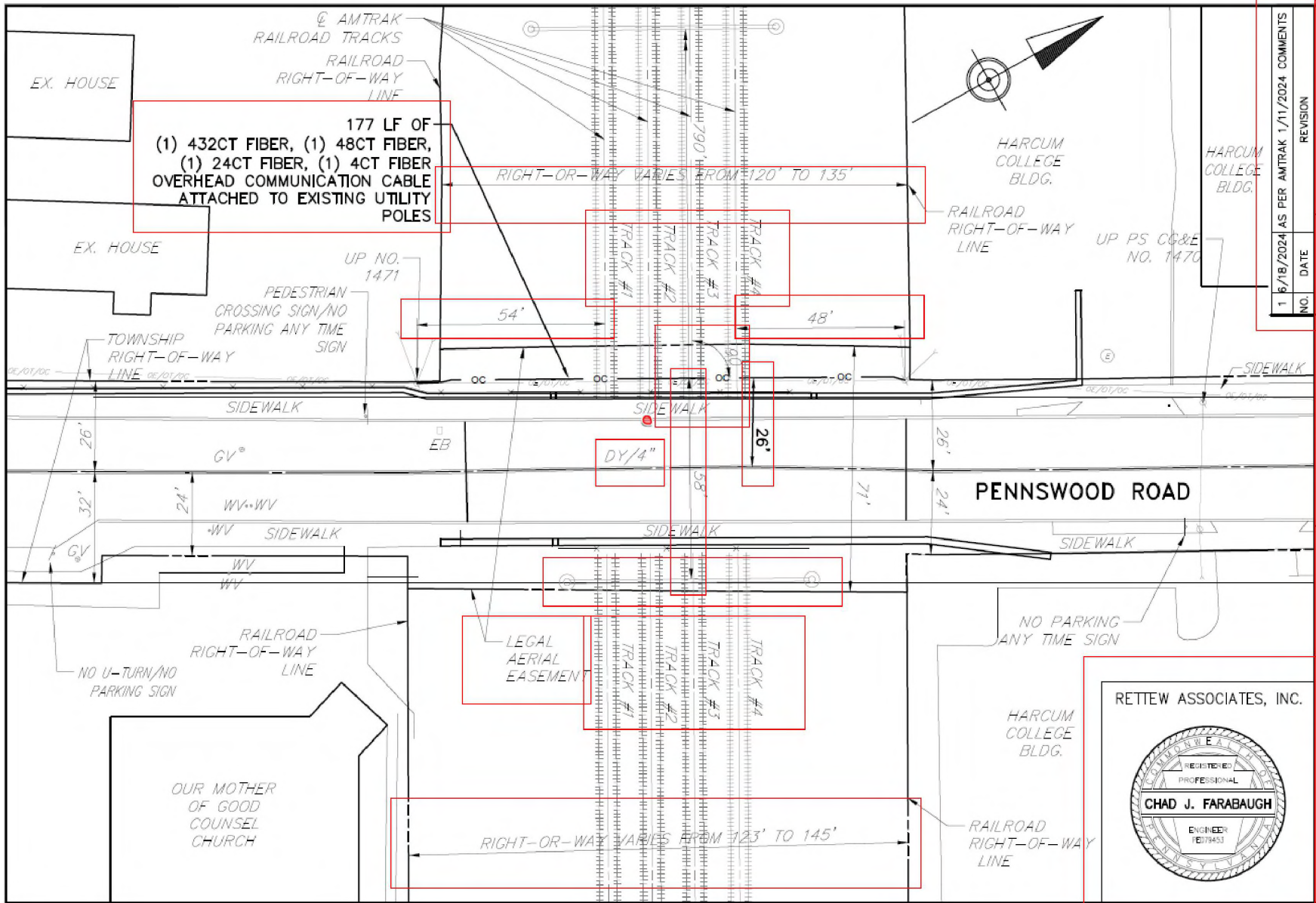
CHAD J. FARABAUGH
 ENGINEER
 PROJECT ENGINEER
 6/18/2024
 DATE

AMTRAK
 UTILITY CROSSING - AERIAL
COMCAST CABLE
 LOWER MERION TOWNSHIP
 MONTGOMERY CO., PA

1 6/18/2024 AS PER AMTRAK 1/11/2024 COMMENTS	
NO.	DATE
REVISION	

RETTEW
 RETTEW Associates, Inc.
 200 Old County Road
 Philadelphia, PA 19103
 Phone: (215) 394-1063
 E-mail: info@rettew.com Website: www.rettew.com

DRAWN BY: SMS
 DATE: 6/03/2019
 SCALE: 1" = 25 FEET
 DWG. NO.: 093192019
 SHEET 1 OF 5



NO.	DATE	REVISION
1	6/18/2024	AS PER AMTRAK 1/11/2024 COMMENTS

DRAWN BY: SMS
 DATE: 6/03/2019
 SCALE: 1" = 25 FEET
 DWG. NO.: 093192019

RETTEW

RETTEW ASSOCIATES, INC.
 3000 Columbus Ave., Lancaster, PA 17603
 Phone (717) 394-3721 • Fax (717) 394-1063
 E-mail: info@rettew.com • Website: www.rettew.com

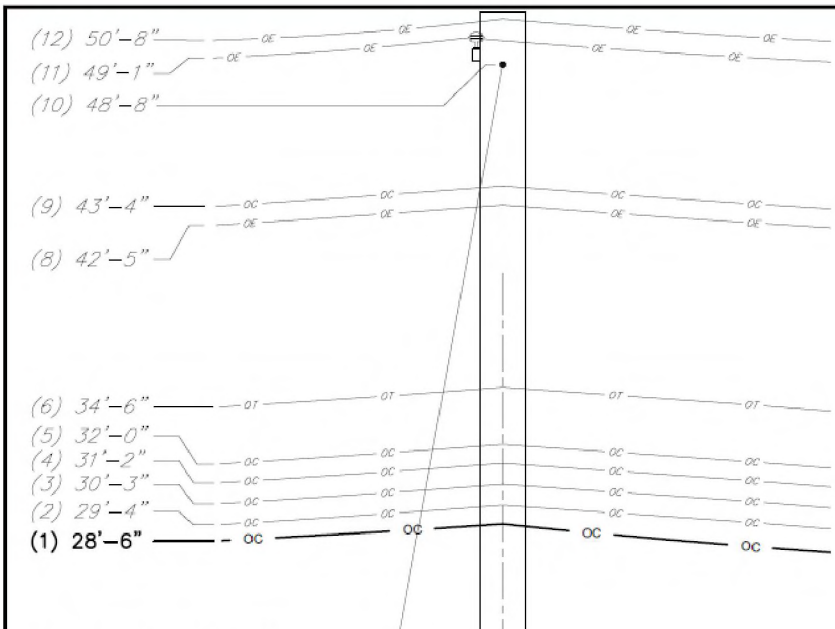
AMTRAK
 UTILITY CROSSING - AERIAL
 COMCAST CABLE

RETTEW ASSOCIATES, INC.

CHAD J. FARABAUGH
 ENGINEER
 16079453

LOWER MERION TOWNSHIP MONTGOMERY CO. PA

SHEET 2 OF 5

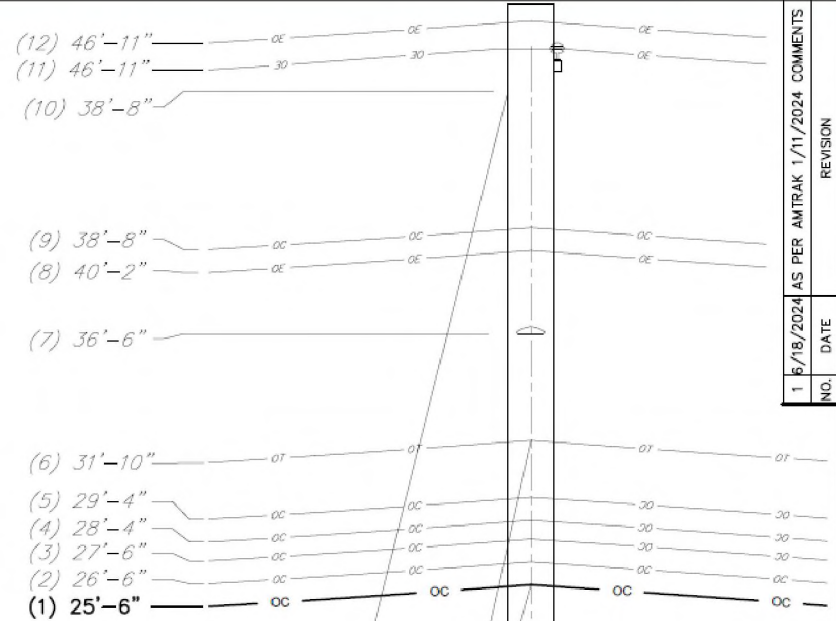


- UTILITIES LIST ON PECO #1471:
1. COMCAST FIBERS (4)
 2. LEVEL 3
 3. CROWNCASTLE
 4. RCN
 5. BERKS WESTERN TELCOM
 6. PRIMARY BUNDLE
 7. STREET LIGHT
 8. SECONDARY NEUTRAL
 9. P. COMM
 10. PRIMARY DNG
 11. PRIMARY X-ARM
 12. PRIMARY

POLE TOP - PECO 1471
(LOOKING WEST)
 NOT TO SCALE
 GROUND - 0'-0"

AMTRAK TRACKS →

NOTE:
 FOR CLARITY, THE ELEVATIONS ARE SHOWN ON THE EDGE, BUT THEY ARE TO THE ATTACHMENT POINT CENTERED ON THE POLE.



- UTILITIES LIST ON PECO #38100:
1. COMCAST FIBERS (4)
 2. LEVEL 3
 3. CROWNCASTLE
 4. RCN
 5. BERKS WESTERN TELCOM
 6. PRIMARY BUNDLE
 7. STREET LIGHT
 8. SECONDARY NEUTRAL
 9. P. COMM
 10. PRIMARY DNG
 11. PRIMARY X-ARM
 12. PRIMARY

POLE TOP - PECO 38100
(LOOKING WEST)
 NOT TO SCALE
 GROUND - 0'-0"

← AMTRAK TRACKS

RETTEW ASSOCIATES, INC.

1	6/18/2024	AS PER AMTRAK 1/11/2024 COMMENTS
	NO.	DATE
REVISION		
DRAWN BY: SMS		
DATE: 6/03/2019		
SCALE: 1" = 5' FEET		
DWG. NO. 093192019		
SHEET 4 OF 5		

RETTEW
 RETTEW Associates, Inc.
 3020 Columbia Ave., Lancaster, PA 17603
 Phone (717) 384-3721 • Fax (717) 384-1063
 E-mail: info@rettew.com

AMTRAK
 UTILITY CROSSING - AERIAL
COMCAST CABLE
 LOWER MERION TOWNSHIP MONTGOMERY CO. PA

NOTES:

1. ALL UNDERGROUND UTILITIES, CABLE, AND FACILITIES MUST BE LOCATED AND PROTECTED BEFORE ANY EXCAVATING, DRILLING, BORING/DIRECTIONAL DRILLING, GROUND PENETRATING ACTIVITIES, OR CONSTRUCTION TAKES PLACE. THIS INCLUDES RAILROAD AND COMMERCIAL UTILITIES, CABLES, DUCT LINES, AND FACILITIES. THESE ACTIVITIES WILL NOT BE PERFORMED IN CLOSE PROXIMITY TO THE RAILROAD DUCT LINES UNLESS MONITORED BY ON-SITE AMTRAK COMMUNICATIONS AND SIGNAL (C&S) DEPARTMENT PERSONNEL. HAND DIGGING MAY BE REQUIRED, AS DIRECTED BY AMTRAK THROUGH THE ON-SITE AMTRAK C&S SUPPORT PERSONNEL. AMTRAK MAINTAINS THE RIGHT TO ACCESS ALL EXISTING CABLES AND CONDUITS THROUGHOUT CONSTRUCTION. AMTRAK ALSO RESERVES THE RIGHT TO UPGRADE AND INSTALL NEW CABLES AND CONDUITS IN THE AFFECTED AREA. THE "ONE-CALL" PROCESS MUST BE FOLLOWED. BE AWARE THAT AMTRAK IS NOT PART OF THE ONE-CALL PROCESS; CONTACT AMTRAK ENGINEERING TO HAVE ALL RAILROAD UNDERGROUND UTILITIES AND ASSETS LOCATED. IF REQUESTED BY AMTRAK, EXISTING DEPTHS OF UTILITIES BEING CROSSED MUST BE VERIFIED THROUGH TEST PITS PERFORMED BY THE CONTRACTOR AS DIRECTED BY AND UNDER THE DIRECT SUPERVISION OF AMTRAK C&S SUPPORT PERSONNEL. PRECAUTIONS MUST BE TAKEN TO PREVENT ANY INTERRUPTION TO RAILROAD OPERATION.
2. SIGNAL PREVIEW MUST NOT BE OBSTRUCTED. CONSULTANTS PERFORMING WORK FOR AMTRAK OR ON AMTRAK PROPERTY MUST SHOW THAT THERE IS ADEQUATE SIGNAL PREVIEW. IN ADDITION, ALL TEMPORARY STRUCTURES, FORMWORK, EQUIPMENT, ETC. MUST COMPLY DURING CONSTRUCTION.
3. AMTRAK C&S PERSONNEL MUST FIELD-VERIFY THAT THERE IS NO SIGNAL EQUIPMENT IN THE WAY OF THE PROJECT AND THAT SIGNAL PREVIEW IS NOT BEING OBSTRUCTED.
4. IF WORK SHALL BE PERFORMED ON RAILROAD PROPERTY THAT INVOLVES HEAVY TRUCKS, EQUIPMENT, OR MACHINERY ALONG THE RIGHT-OF-WAY, DUCT LINES AND PULL BOXES SHALL BE INSPECTED BY ONSITE AMTRAK PERSONNEL AND THE EQUIPMENT OPERATOR TO INSURE THEY CAN WITHHOLD THE APPROPRIATE WEIGHT. REFER TO TIERS & STATIC WHEEL LOAD RATINGS DOCUMENT.
5. ANY WORK (OR EQUIPMENT BEING STAGED ONSITE DURING CONSTRUCTION) PERFORMED AT OR NEAR A RAILROAD CROSSING MUST NOT OBSTRUCT THE VIEW OF FLASHING LIGHT UNITS OR GATES TO ONCOMING TRAFFIC.
6. ALL PERSONS THAT ARE ON OR ADJACENT TO RAILROAD PROPERTY MUST SUCCESSFULLY COMPLETE THE CONTRACTOR ORIENTATION TRAINING. ALL CONTRACTORS MUST CARRY THEIR "AMTRAK CONTRACTOR ROADWAY WORKER PROTECTION" CARD WITH THEM AT ALL TIMES WHILE ON OR ADJACENT TO RAILROAD PROPERTY.
7. ALL WORK ON OR ADJACENT RAILROAD PROPERTY MUST COMPLY WITH AMTRAK ENGINEERING PRACTICES EP3014 -MAINTENANCE AND PROTECTION OF RAILROAD TRAFFIC DURING CONTRACTOR OPERATIONS.
8. THE TRACKS MUST BE PROTECTED DURING EXCAVATION FOR NEW POLE INSTALLATION IN ACCORDANCE WITH AMTRAK EP3014 SPEC 02261. SEE SKETCH 1 IN AMTRAK EP3014 SPEC 02261 FOR GUIDANCE.
9. RAILS MUST BE PROTECTED AGAINST DEBRIS. RUST, SAND, METAL SHAVINGS OR OTHER MATERIAL CAN INTERFERE WITH THE PROPER SHUNTING SENSITIVITY OF THE TRACK CIRCUIT.
10. PRIOR TO ENTERING AMTRAK'S PROPERTY FOR ANY WORK, THE CONTRACTOR MUST EXECUTE AMTRAK'S STANDARD TEMPORARY PERMIT TO ENTER UPON PROPERTY (PTE). THE FULLY EXECUTED PTE, WRITTEN NOTICE TO PROCEED FROM AMTRAK THAT ALL REQUIREMENTS OF THE PTE HAVE BEEN MET AND PROOF OF SAFETY TRAINING MUST, AT ALL TIMES, BE FURNISHED BY THE CONTRACTOR AT THE PROJECT SITE.
11. ANY DEBRIS OR DAMAGE RESULTING FROM WORK SHALL BE IMMEDIATELY REPORTED TO THE RAILROAD. RAILROAD SHALL BE REPAIRED BY RAILROAD FORCES AT PROJECT EXPENSE.

1	6/18/2024	AS PER AMTRAK 1/11/2024 COMMENTS
NO.	DATE	REVISION
DRAWN BY: SMS		
DATE: 6/03/2019		
SCALE: NO SCALE		
DWG. NO.: 093192019		
SHEET 5 OF 5		

REVIEW

RETTEW Associates, Inc.
 3020 Columbia Ave., Lancaster, PA 17603
 Phone: (717) 399-2121 Fax: (717) 399-1063
 E-mail: info@rettew.com Website: www.rettew.com

RETTEW ASSOCIATES, INC.

CHAD J. FARABAUGH
 ENGINEER
 FE179453

AMTRAK
 UTILITY CROSSING - AERIAL NOTES
COMCAST CABLE
 LOWER MERION TOWNSHIP MONTGOMERY CO. PA