

Before the
FEDERAL COMMUNICATIONS COMMISSION
Washington, D.C. 20554

M-2025-3052792

In the Matter of

Section 63.71 Application of

Consolidated Communications of Pennsylvania Company, LLC

For Authority Pursuant to Section 214 of the Communications Act of 1934, as Amended, to Discontinue Telecommunications Services provided over Copper Facilities in Portions of Wexford, Pennsylvania

WC Docket No. 25-_____

Section 63.71 Application of Consolidated Communications of Pennsylvania Company

Pursuant to Section 214 (a) of the Communication Act of 1934, as amended, 47 U.S.C. § 214(a), and Section 63.71 of the Commission's rules, 47 C.F.R. §63.71, Consolidated Communications of Pennsylvania Company, LLC ("Consolidated Communications"), hereby requests authority to discontinue legacy voice and digital subscriber line ("DSL") telecommunications services provided over certain copper loop plant in portions of Wexford, Pennsylvania (the "Affected Services"). A vehicle collision with the Consolidated Communications loop splitter cabinet located near the intersection of Wexford Bayne Road and Blue Heron Drive damaged the cabinet itself, the copper loop plant and network equipment within, and the nearby electric power pedestal. The cabinet and power pedestal must be removed, causing involuntary discontinuance of the Affected Services to approximately 221 serviceable addresses (including approximately nine active customers).

Consolidated Communications provides the following information pursuant to Section 63.71 of the Commission's rules:

A. Information Required under Section 63.71(a)(1-4)

1. Name and address of carrier

Consolidated Communications of Pennsylvania Company, LLC
2116 South 17th Street
Mattoon, Illinois 61938

Any necessary correspondence concerning this Application should be directed to counsel for

Consolidated Communications, as follows:

Richard R. Cameron
Womble Bond Dickinson (US) LLP
2001 K Street, Suite 400 South
Washington, D.C. 20006
Tel. (202) 857-4527
Email: Richard.Cameron@wbd-us.com

2. Date of planned service discontinuance, reduction, or impairment

On or after July 15, 2025.

3. Points of geographic areas of service affected

A map of the affected area and a list of affected addresses is attached as **Exhibit A** to this application, showing that there are 221 serviceable addresses affected. This figure includes approximately nine residential customer locations that subscribed to the Affected Services as of the date of Consolidated Communications' customer notice of this filing.

Consolidated Communications has deployed Fiber-to-the-Premises ("FTTP") facilities that enable modern Fidium™ Fiber VoIP and scalable broadband services to all affected customer locations. Consolidated Communications will work with all affected customers to ensure as seamless transition as possible.

Consolidated Communications' field engineers attempted emergency repairs following the collision and were able to maintain telecommunications services to the affected customers on a temporary basis. It has now been determined that the equipment cannot be suitably repaired and poses a safety concern. Specifically, the damaged cabinet and power pedestal are located in a residential area and a recent power outage revealed that powering the cabinet with a standby generator is dangerous because of the damage to the power pedestal. This discontinuance is the

only feasible approach. As discussed above, Consolidated Communications' customers will instead gain access to modern, fiber-based voice and broadband services as a replacement for legacy Affected Services being discontinued.

B. Additional Information Required under Section 63.71(c)

1. Brief description of the dates and methods of notice to all affected customers (Section 63.71(c)(3))

Prior to making this filing, Consolidated Communications sent written notice of the proposed discontinuance meeting the requirements of Section 63.71(a) of the Commission's rules, 47 C.F.R. § 63.71(a). A copy of the notice is attached as **Exhibit B**.

In addition, pursuant to Section 63.71(a) and as shown in the Certificate of Service included with this Application, Consolidated Communications is sending a complete copy of this Application to the Governor of Pennsylvania and the Pennsylvania Public Utility Commission, as well as the United States Department of Defense, Special Assistant for Telecommunications, as required under Section 63.71(a) of the Commission's rules, 47 C.F.R. § 63.71(a). There are no federally recognized Tribal Nations in Pennsylvania.

2. Whether the carrier is considered dominant or non-dominant with respect to the service to be discontinued, reduced, or impaired (Section 63.71(c)(4))

Consolidated Communications is non-dominant with respect to the Affected Services.

C. Compliance with the Section 63.71(f)(2)(ii) Alternative Options Test

Following the removal of the copper facilities used to deliver the Affected Services, Consolidated Communications will offer modern Fidium™ Fiber VoIP and scalable broadband services to all affected customer locations as a replacement for the Affected Services.

In addition, mobile voice and broadband services are available throughout the affected area from multiple wireless service providers, including at a minimum AT&T, Verizon, and T-Mobile, based on data from the FCC's National Broadband Map.¹

Thus, this discontinuance of service constitutes an involuntary technology transition, as defined in Section 63.60(i) of the Commission's rules.² On the facts above, Consolidated Communications meets the "alternative options test" set forth in Section 63.71(f)(2)(ii) of the Commission's rules.³ Thus, this application qualifies for treatment under the streamlined grant procedures set forth in Section 63.71(f)(1).⁴

* * * * *

For the foregoing reasons, Consolidated Communications requests that the Commission approve this Application to discontinue the Services, as described herein. Pursuant to Section 214(a) of the Communication Act of 1934, as amended, 47 U.S.C. § 214(a), and Section 63.71(f)(1) of the Commission's rules, 47 C.F.R. § 63.71(f)(1), Consolidated Communications understands that

¹ See Federal Communications Commission, National Broadband Map (data as of June 30, 2024), available at: <https://broadbandmap.fcc.gov>).

² 47 C.F.R. § 63.60(i) (technology transition means "any change in service that would result in the replacement of a wireline TDM-based voice service with a service using a different technology or medium for transmission to the end user, whether internet Protocol (IP), wireless, or another type; except that retirement of copper, as defined in § 51.325(a)(3) of this chapter, that does not result in a discontinuance, reduction, or impairment of service requiring Commission authorization pursuant to this part shall not constitute a 'technology transition' for purposes of this part").

³ 47 C.F.R. § 63.71(f)(2)(ii); see also *Accelerating Wireline Broadband Deployment by Removing Barriers to Infrastructure Investment*, WC Docket No. 17-84, Order, DA 25-248 (Wir. Comp. Bur., rel. Mar. 20, 2025), at ¶ 7 (waiving the requirement to provide standalone VOIP service under the Alternative Options Test).

⁴ See 47 C.F.R. § 63.71(f)(1) (an "application to discontinue, reduce, or impair service, if filed by . . . any carrier meeting the requirements of paragraph (f)(2)(ii) of this section, shall be automatically granted on the 31st day after its filing with the Commission without any Commission notification to the applicant unless the Commission has notified the applicant that the grant will not be automatically effective").

this Application will be automatically granted on the 31st day after the Commission releases Public Notice of this Application, absent prior Commission notification to the contrary.

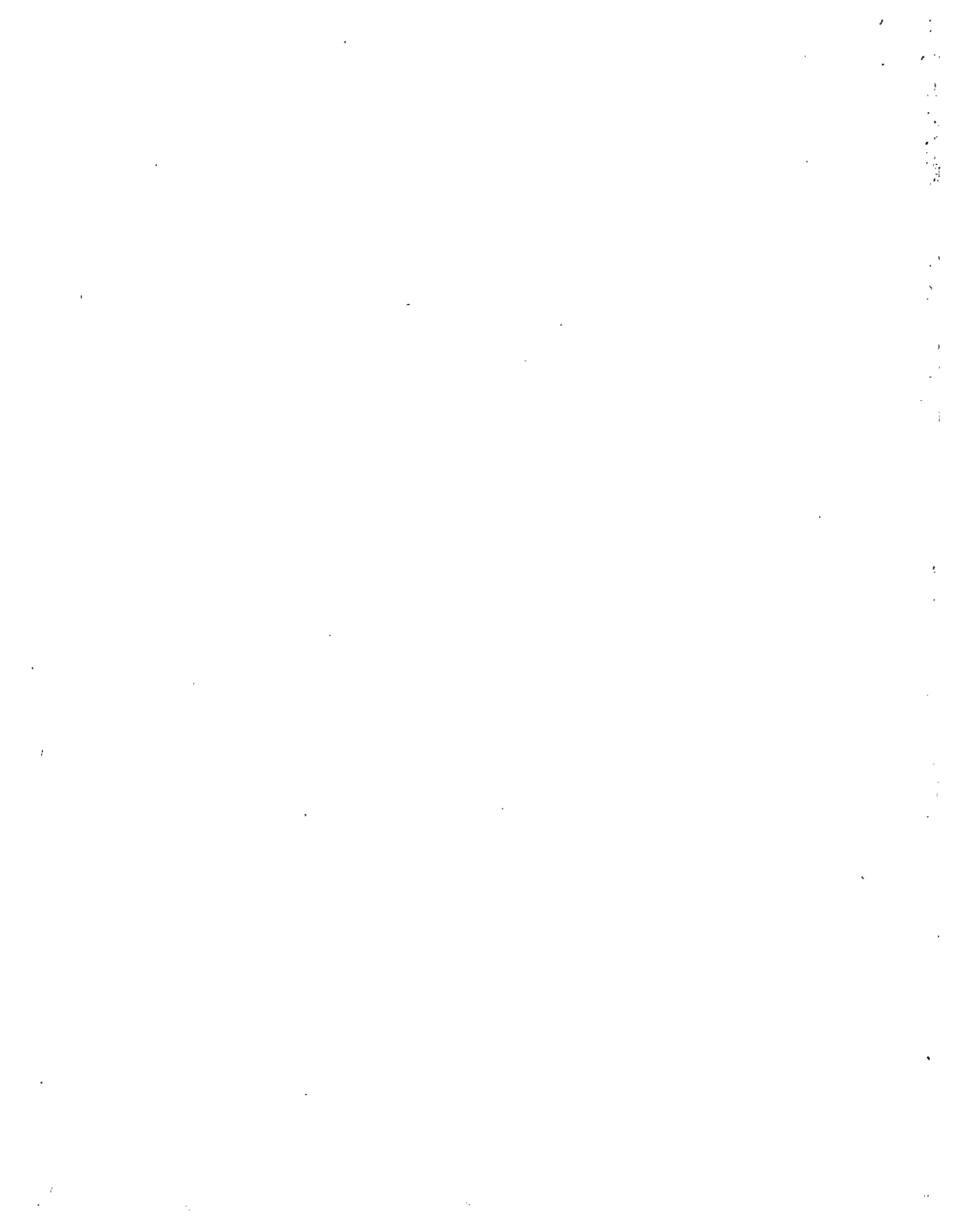
Respectfully submitted,



Richard R. Cameron
Womble Bond Dickinson (US) LLP
2001 K Street, Suite 400 South
Washington, D.C. 20006
Tel. (202) 857-4527
Email: Richard.Cameron@wbd-us.com

Kevin J. Kastor
Senior Director – Government Affairs
Consolidated Communications
350 S. Loop 336 W
Conroe, Texas 77304

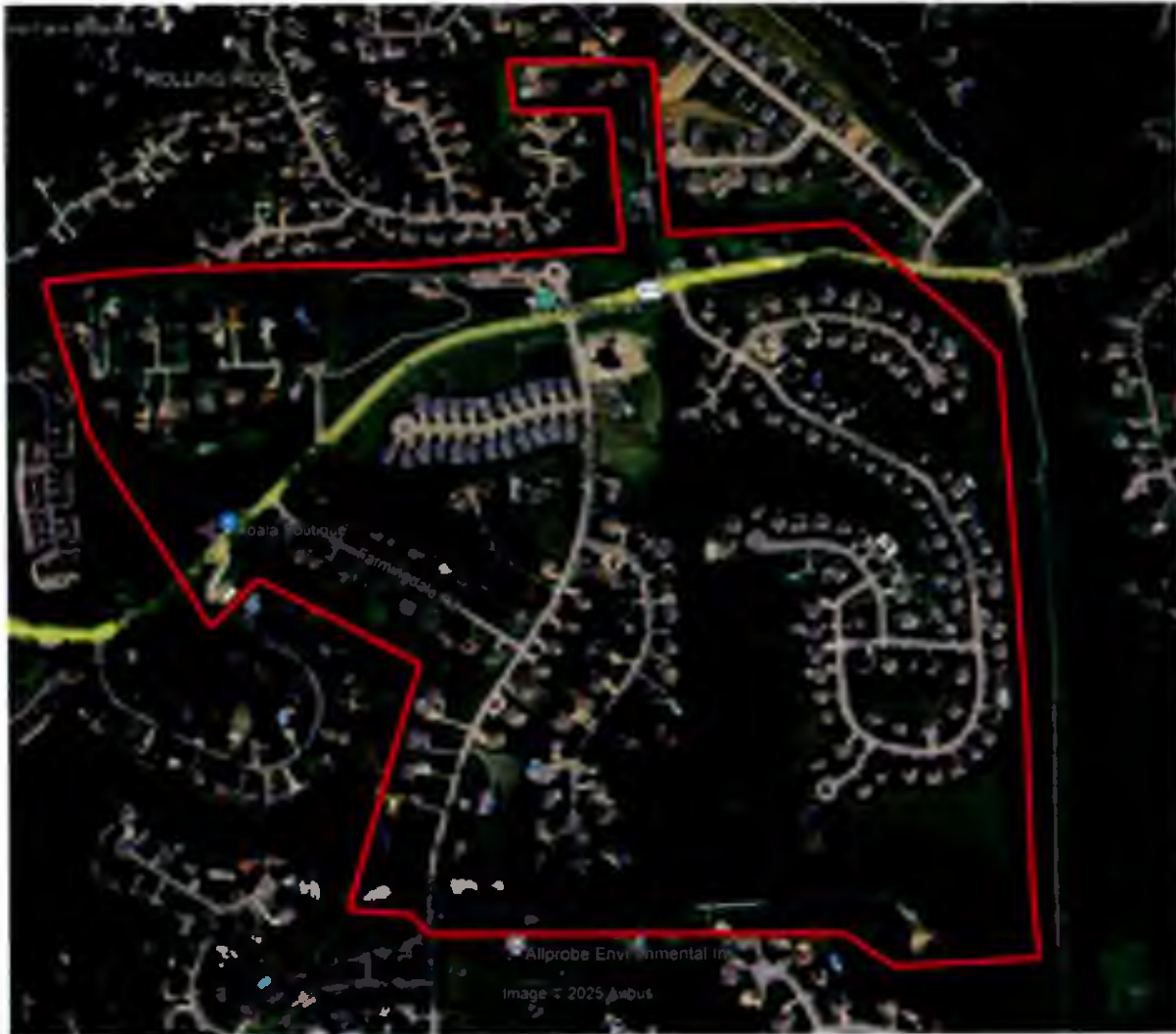
Counsel for Consolidated Communications

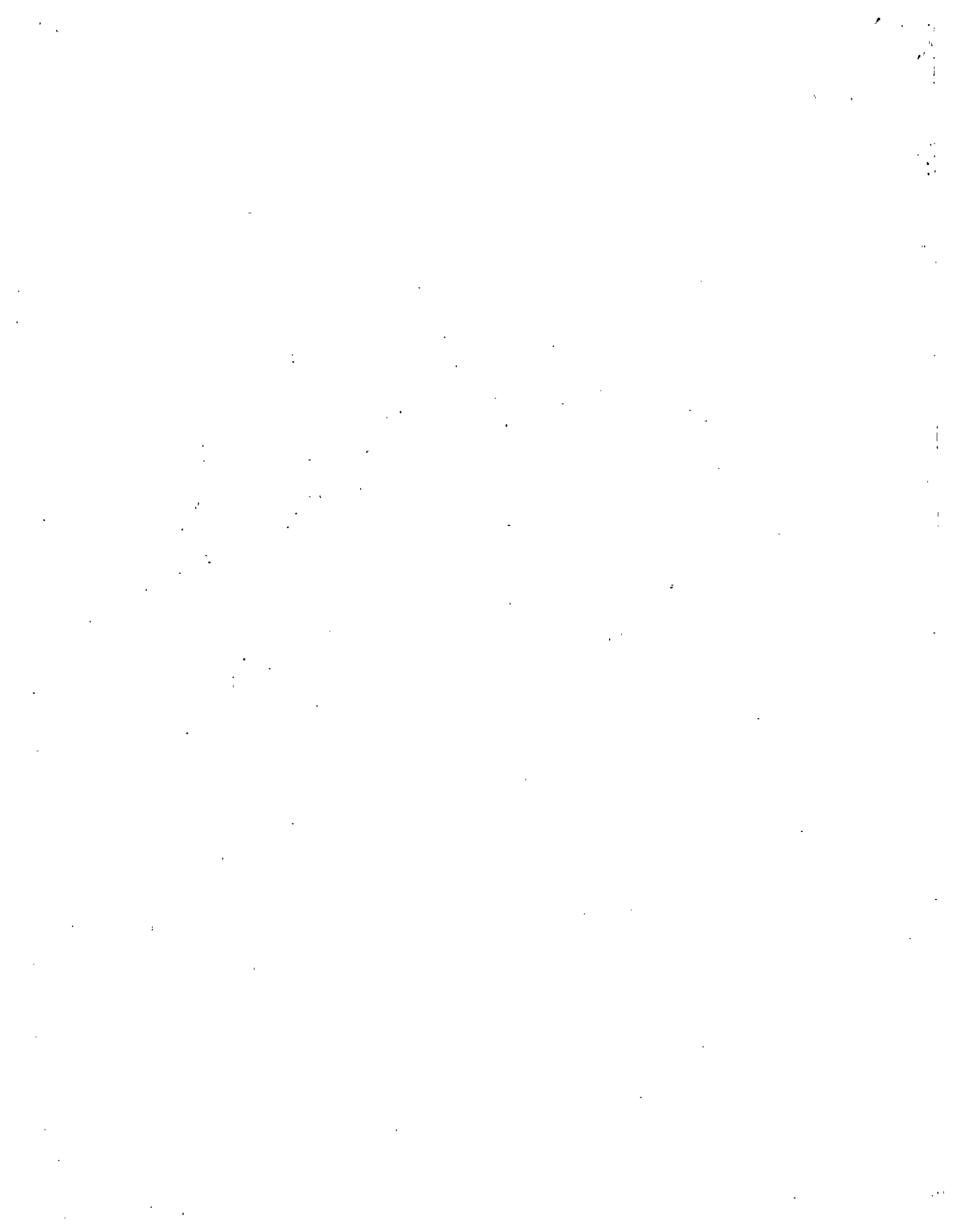


RCVD PUC SEC BUR
JUN 6 2025 AM 11:00

Exhibit A

Map and List of Affected Addresses



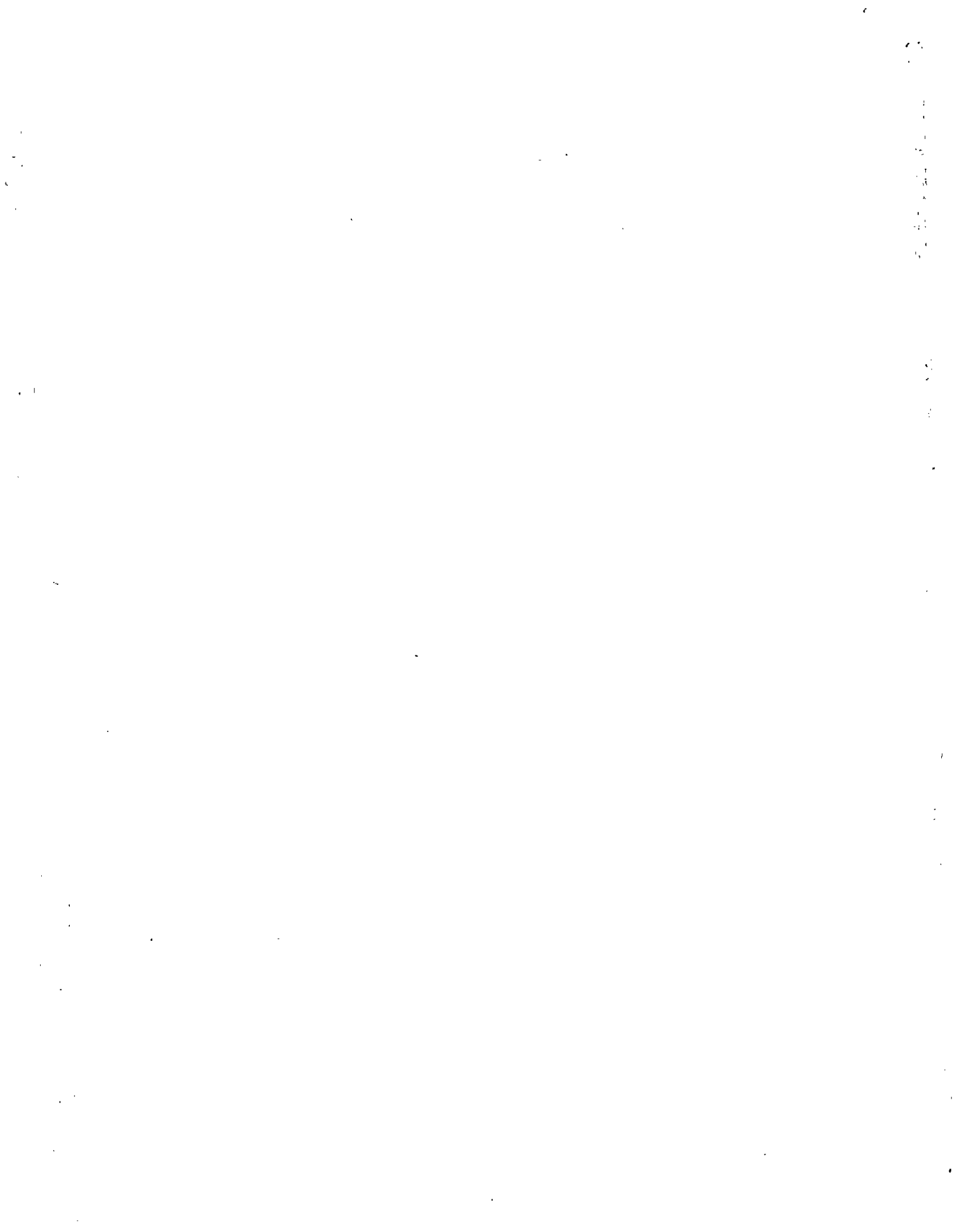


<u>ADDRESS</u>	<u>CITY</u>	<u>STATE</u>	<u>ZIP CODE</u>
500 ALTMYER FIELDS LN	WEXFORD	PA	15090
501 ALTMYER FIELDS LN	WEXFORD	PA	15090
502 ALTMYER FIELDS LN	WEXFORD	PA	15090
503 ALTMYER FIELDS LN	WEXFORD	PA	15090
504 ALTMYER FIELDS LN	WEXFORD	PA	15090
505 ALTMYER FIELDS LN	WEXFORD	PA	15090
506 ALTMYER FIELDS LN	WEXFORD	PA	15090
507 ALTMYER FIELDS LN	WEXFORD	PA	15090
508 ALTMYER FIELDS LN	WEXFORD	PA	15090
509 ALTMYER FIELDS LN	WEXFORD	PA	15090
510 ALTMYER FIELDS LN	WEXFORD	PA	15090
511 ALTMYER FIELDS LN	WEXFORD	PA	15090
512 ALTMYER FIELDS LN	WEXFORD	PA	15090
513 ALTMYER FIELDS LN	WEXFORD	PA	15090
514 ALTMYER FIELDS LN	WEXFORD	PA	15090
515 ALTMYER FIELDS LN	WEXFORD	PA	15090
516 ALTMYER FIELDS LN	WEXFORD	PA	15090
517 ALTMYER FIELDS LN	WEXFORD	PA	15090
518 ALTMYER FIELDS LN	WEXFORD	PA	15090
519 ALTMYER FIELDS LN	WEXFORD	PA	15090
521 ALTMYER FIELDS LN	WEXFORD	PA	15090
523 ALTMYER FIELDS LN	WEXFORD	PA	15090
200 ASH CT	WEXFORD	PA	15090
201 ASH CT	WEXFORD	PA	15090
203 ASH CT	WEXFORD	PA	15090
205 ASH CT	WEXFORD	PA	15090
206 ASH CT	WEXFORD	PA	15090
209 ASH CT	WEXFORD	PA	15090
212 ASH CT	WEXFORD	PA	15090
213 ASH CT	WEXFORD	PA	15090
216 ASH CT	WEXFORD	PA	15090
217 ASH CT	WEXFORD	PA	15090
220 ASH CT	WEXFORD	PA	15090
221 ASH CT	WEXFORD	PA	15090
224 ASH CT	WEXFORD	PA	15090
225 ASH CT	WEXFORD	PA	15090
227 ASH CT	WEXFORD	PA	15090
228 ASH CT	WEXFORD	PA	15090
229 ASH CT	WEXFORD	PA	15090
232 ASH CT	WEXFORD	PA	15090

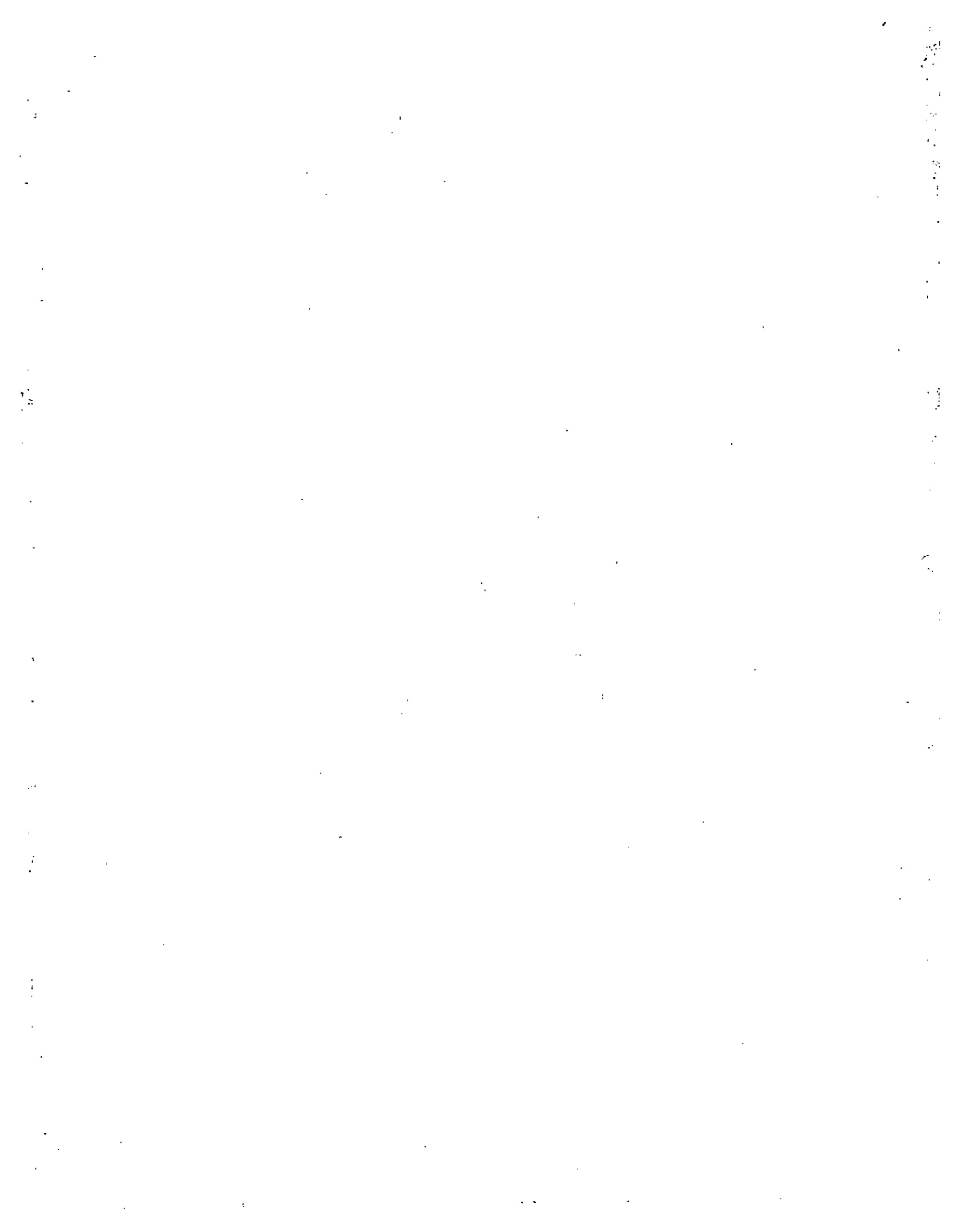
<u>ADDRESS</u>	<u>CITY</u>	<u>STATE</u>	<u>ZIP CODE</u>
233 ASH CT	WEXFORD	PA	15090
236 ASH CT	WEXFORD	PA	15090
239 ASH CT	WEXFORD	PA	15090
240 ASH CT	WEXFORD	PA	15090
243 ASH CT	WEXFORD	PA	15090
244 ASH CT	WEXFORD	PA	15090
247 ASH CT	WEXFORD	PA	15090
248 ASH CT	WEXFORD	PA	15090
251 ASH CT	WEXFORD	PA	15090
252 ASH CT	WEXFORD	PA	15090
101 BLUE HERON DR	WEXFORD	PA	15090
102 BLUE HERON DR	WEXFORD	PA	15090
103 BLUE HERON DR	WEXFORD	PA	15090
104 BLUE HERON DR	WEXFORD	PA	15090
105 BLUE HERON DR	WEXFORD	PA	15090
106 BLUE HERON DR	WEXFORD	PA	15090
107 BLUE HERON DR	WEXFORD	PA	15090
108 BLUE HERON DR	WEXFORD	PA	15090
109 BLUE HERON DR	WEXFORD	PA	15090
110 BLUE HERON DR	WEXFORD	PA	15090
111 BLUE HERON DR	WEXFORD	PA	15090
112 BLUE HERON DR	WEXFORD	PA	15090
113 BLUE HERON DR	WEXFORD	PA	15090
114 BLUE HERON DR	WEXFORD	PA	15090
116 BLUE HERON DR	WEXFORD	PA	15090
118 BLUE HERON DR	WEXFORD	PA	15090
119 BLUE HERON DR	WEXFORD	PA	15090
120 BLUE HERON DR	WEXFORD	PA	15090
121 BLUE HERON DR	WEXFORD	PA	15090
122 BLUE HERON DR	WEXFORD	PA	15090
123 BLUE HERON DR	WEXFORD	PA	15090
124 BLUE HERON DR	WEXFORD	PA	15090
125 BLUE HERON DR	WEXFORD	PA	15090
126 BLUE HERON DR	WEXFORD	PA	15090
127 BLUE HERON DR	WEXFORD	PA	15090
128 BLUE HERON DR	WEXFORD	PA	15090
129 BLUE HERON DR	WEXFORD	PA	15090
130 BLUE HERON DR	WEXFORD	PA	15090
131 BLUE HERON DR	WEXFORD	PA	15090
132 BLUE HERON DR	WEXFORD	PA	15090

ADDRESS	CITY	STATE	ZIP CODE
133 BLUE HERON DR	WEXFORD	PA	15090
135 BLUE HERON DR	WEXFORD	PA	15090
137 BLUE HERON DR	WEXFORD	PA	15090
139 BLUE HERON DR	WEXFORD	PA	15090
140 BLUE HERON DR	WEXFORD	PA	15090
141 BLUE HERON DR	WEXFORD	PA	15090
143 BLUE HERON DR	WEXFORD	PA	15090
145 BLUE HERON DR	WEXFORD	PA	15090
147 BLUE HERON DR	WEXFORD	PA	15090
148 BLUE HERON DR	WEXFORD	PA	15090
149 BLUE HERON DR	WEXFORD	PA	15090
151 BLUE HERON DR	WEXFORD	PA	15090
152 BLUE HERON DR	WEXFORD	PA	15090
153 BLUE HERON DR	WEXFORD	PA	15090
155 BLUE HERON DR	WEXFORD	PA	15090
156 BLUE HERON DR	WEXFORD	PA	15090
157 BLUE HERON DR	WEXFORD	PA	15090
160 BLUE HERON DR	WEXFORD	PA	15090
161 BLUE HERON DR	WEXFORD	PA	15090
163 BLUE HERON DR	WEXFORD	PA	15090
165 BLUE HERON DR	WEXFORD	PA	15090
167 BLUE HERON DR	WEXFORD	PA	15090
169 BLUE HERON DR	WEXFORD	PA	15090
171 BLUE HERON DR	WEXFORD	PA	15090
703 BOWMAN LN	WEXFORD	PA	15090
717 BOWMAN LN	WEXFORD	PA	15090
140 CARDINAL DR	WEXFORD	PA	15090
300 CARDINAL DR	WEXFORD	PA	15090
440 CARDINAL DR	WEXFORD	PA	15090
493 CARDINAL DR	WEXFORD	PA	15090
2622 COLE RD	WEXFORD	PA	15090
2624 COLE RD	WEXFORD	PA	15090
2710 COLE RD	WEXFORD	PA	15090
2712 COLE RD	WEXFORD	PA	15090
2721 COLE RD	WEXFORD	PA	15090
2729 COLE RD	WEXFORD	PA	15090
2730 COLE RD	WEXFORD	PA	15090
2731 COLE RD	WEXFORD	PA	15090
2732 COLE RD	WEXFORD	PA	15090
2733 COLE RD	WEXFORD	PA	15090

ADDRESS	CITY	STATE	ZIP CODE
2735 COLE RD	WEXFORD	PA	15090
2737 COLE RD	WEXFORD	PA	15090
2738 COLE RD	WEXFORD	PA	15090
2740 COLE RD	WEXFORD	PA	15090
2742 COLE RD	WEXFORD	PA	15090
2744 COLE RD	WEXFORD	PA	15090
2745 COLE RD	WEXFORD	PA	15090
2746 COLE RD	WEXFORD	PA	15090
2747 COLE RD	WEXFORD	PA	15090
2748 COLE RD	WEXFORD	PA	15090
2749 COLE RD	WEXFORD	PA	15090
2750 COLE RD	WEXFORD	PA	15090
2751 COLE RD	WEXFORD	PA	15090
2755 COLE RD	WEXFORD	PA	15090
2798 COLE RD	WEXFORD	PA	15090
2800 COLE RD	WEXFORD	PA	15090
2802 COLE RD	WEXFORD	PA	15090
500 EAGLE CT	WEXFORD	PA	15090
502 EAGLE CT	WEXFORD	PA	15090
504 EAGLE CT	WEXFORD	PA	15090
506 EAGLE CT	WEXFORD	PA	15090
508 EAGLE CT	WEXFORD	PA	15090
509 EAGLE CT	WEXFORD	PA	15090
510 EAGLE CT	WEXFORD	PA	15090
512 EAGLE CT	WEXFORD	PA	15090
513 EAGLE CT	WEXFORD	PA	15090
514 EAGLE CT	WEXFORD	PA	15090
516 EAGLE CT	WEXFORD	PA	15090
518 EAGLE CT	WEXFORD	PA	15090
520 EAGLE CT	WEXFORD	PA	15090
522 EAGLE CT	WEXFORD	PA	15090
200 EGRET DR	WEXFORD	PA	15090
203 EGRET DR	WEXFORD	PA	15090
205 EGRET DR	WEXFORD	PA	15090
207 EGRET DR	WEXFORD	PA	15090
209 EGRET DR	WEXFORD	PA	15090
100 FARMINGDALE RD	WEXFORD	PA	15090
101 FARMINGDALE RD	WEXFORD	PA	15090
102 FARMINGDALE RD	WEXFORD	PA	15090
103 FARMINGDALE RD	WEXFORD	PA	15090



<u>ADDRESS</u>	<u>CITY</u>	<u>STATE</u>	<u>ZIP CODE</u>
104 FARMINGDALE RD	WEXFORD	PA	15090
105 FARMINGDALE RD	WEXFORD	PA	15090
106 FARMINGDALE RD	WEXFORD	PA	15090
107 FARMINGDALE RD	WEXFORD	PA	15090
108 FARMINGDALE RD	WEXFORD	PA	15090
109 FARMINGDALE RD	WEXFORD	PA	15090
110 FARMINGDALE RD	WEXFORD	PA	15090
111 FARMINGDALE RD	WEXFORD	PA	15090
112 FARMINGDALE RD	WEXFORD	PA	15090
113 FARMINGDALE RD	WEXFORD	PA	15090
114 FARMINGDALE RD	WEXFORD	PA	15090
115 FARMINGDALE RD	WEXFORD	PA	15090
116 FARMINGDALE RD	WEXFORD	PA	15090
117 FARMINGDALE RD	WEXFORD	PA	15090
119 FARMINGDALE RD	WEXFORD	PA	15090
121 FARMINGDALE RD	WEXFORD	PA	15090
104 MEADOWVUE DR	WEXFORD	PA	15090
106 MEADOWVUE DR	WEXFORD	PA	15090
107 MEADOWVUE DR	WEXFORD	PA	15090
108 MEADOWVUE DR	WEXFORD	PA	15090
109 MEADOWVUE DR	WEXFORD	PA	15090
110 MEADOWVUE DR	WEXFORD	PA	15090
111 MEADOWVUE DR	WEXFORD	PA	15090
113 MEADOWVUE DR	WEXFORD	PA	15090
114 MEADOWVUE DR	WEXFORD	PA	15090
115 MEADOWVUE DR	WEXFORD	PA	15090
116 MEADOWVUE DR	WEXFORD	PA	15090
117 MEADOWVUE DR	WEXFORD	PA	15090
119 MEADOWVUE DR	WEXFORD	PA	15090
120 MEADOWVUE DR	WEXFORD	PA	15090
303 OSPREY CT	WEXFORD	PA	15090
305 OSPREY CT	WEXFORD	PA	15090
306 OSPREY CT	WEXFORD	PA	15090
307 OSPREY CT	WEXFORD	PA	15090
308 OSPREY CT	WEXFORD	PA	15090
309 OSPREY CT	WEXFORD	PA	15090
310 OSPREY CT	WEXFORD	PA	15090
311 OSPREY CT	WEXFORD	PA	15090
312 OSPREY CT	WEXFORD	PA	15090
313 OSPREY CT	WEXFORD	PA	15090



<u>ADDRESS</u>	<u>CITY</u>	<u>STATE</u>	<u>ZIP CODE</u>
315 OSPREY CT	WEXFORD	PA	15090
317 OSPREY CT	WEXFORD	PA	15090
318 OSPREY CT	WEXFORD	PA	15090
319 OSPREY CT	WEXFORD	PA	15090
320 OSPREY CT	WEXFORD	PA	15090
321 OSPREY CT	WEXFORD	PA	15090
322 OSPREY CT	WEXFORD	PA	15090
323 OSPREY CT	WEXFORD	PA	15090
324 OSPREY CT	WEXFORD	PA	15090
400 RAPTOR CT	WEXFORD	PA	15090
402 RAPTOR CT	WEXFORD	PA	15090
403 RAPTOR CT	WEXFORD	PA	15090
471 WEXFORD BAYNE RD	WEXFORD	PA	15090
491 WEXFORD BAYNE RD	WEXFORD	PA	15090
607 WEXFORD BAYNE RD	WEXFORD	PA	15090
630 WEXFORD BAYNE RD	WEXFORD	PA	15090
639 WEXFORD BAYNE RD	WEXFORD	PA	15090
600 WILLET DR	WEXFORD	PA	15090
602 WILLET DR	WEXFORD	PA	15090
603 WILLET DR	WEXFORD	PA	15090
605 WILLET DR	WEXFORD	PA	15090

Consolidated Communications of Pennsylvania Company
Section 63.71 Application (Wexford, PA)
WC Docket No. 25-
June 3, 2025

RCVD PUC SEC SUR
JUN 6 2025 AM 11:00

Exhibit B

Customer Notice Letter (mailed Friday, May 30, 2025)



2116 S. 17th Street • Mattoon, IL 61938

**ACTION REQUIRED:
Call 1.855.337.5044
by July 1st to avoid
a disruption in service.**

May 30, 2025

Dear Valued Customer,

We're reaching out to let you know that your Consolidated Communications services will be impacted due to a traffic accident at the corner of Wexford Bayne Road and Blue Heron Drive in Wexford, Pennsylvania, that damaged the existing facilities beyond repair. New equipment supporting fiber services is being installed and, as a result, the copper facilities supporting your current phone and/or internet service will be removed on or after **July 15, 2025**.

The good news is that you are eligible for an upgrade to Fidium Fiber. Fidium Fiber is faster and more reliable than DSL. You can also choose between several fiber internet speeds to meet your needs. We can also upgrade your phone experience, too! When you upgrade your internet to Fidium Fiber, we'll also help you upgrade to our digital phone service. You'll enjoy dependable calling and more features.

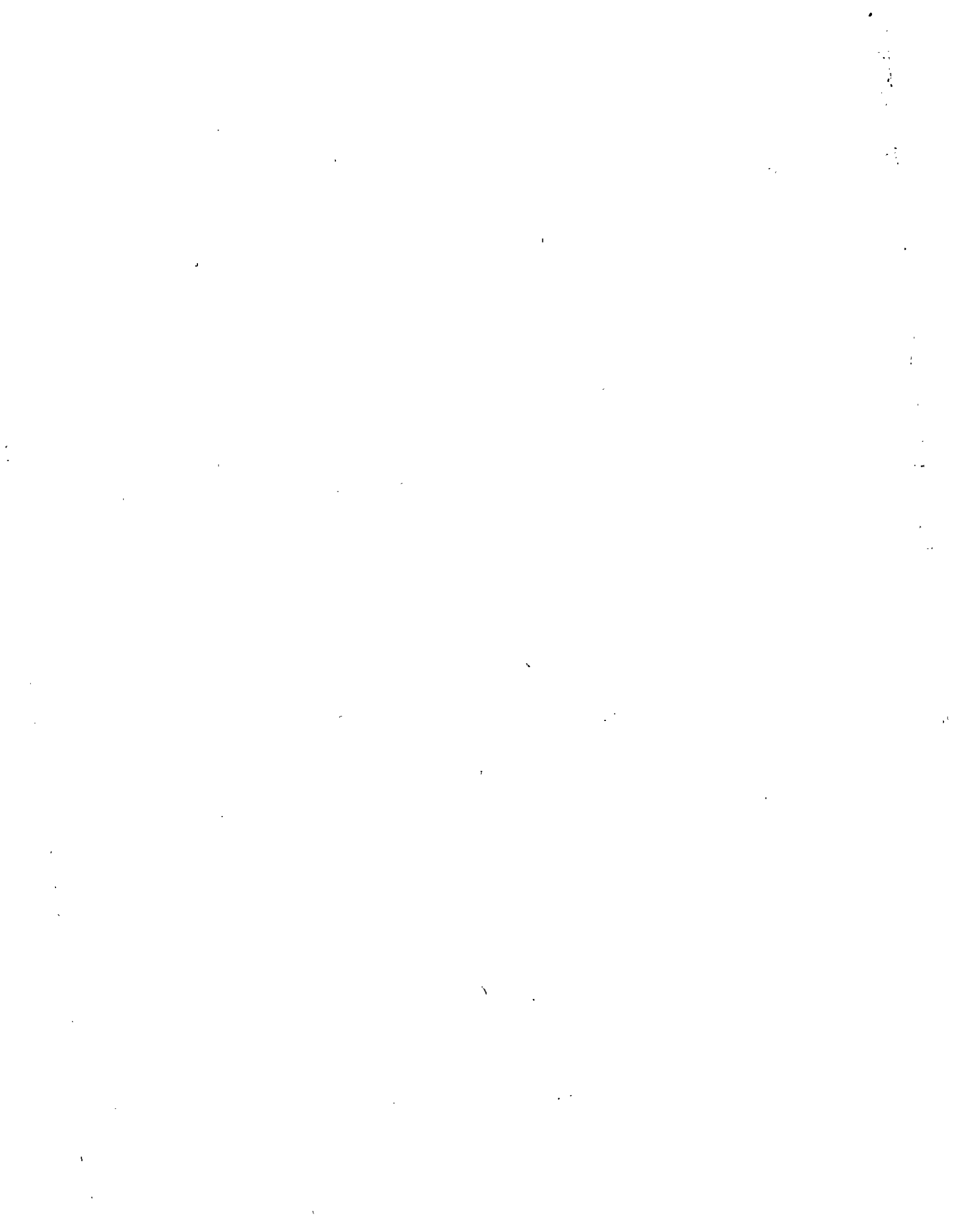
Consolidated is required by the FCC to provide the following statement:

The FCC will normally authorize this proposed discontinuance of service (or reduction or impairment) unless it is shown that customers would be unable to receive service or a reasonable substitute from another carrier or that the public convenience and necessity is otherwise adversely affected. If you wish to object, you should file your comments as soon as possible, but no later than 15 days after the Commission releases public notice of the proposed discontinuance. You may file your comments electronically through the FCC's Electronic Comment Filing System using the docket number established in the Commission's public notice for this proceeding, or you may address them to the Federal Communications Commission, Wireline Competition Bureau, Competition Policy Division, Washington, DC 20554, and include in your comments a reference to the § 63.71 Application of Consolidated Communications. Comments should include specific information about the impact of this proposed discontinuance (or reduction or impairment) upon you or your company, including any inability to acquire reasonable substitute service.

ACTION REQUIRED: Call 1.855.337.5044 by July 1st to schedule your free and easy installation appointment and avoid a disruption in service.

Sincerely,

Consolidated Communications



RCVD PUC SEC BUR
JUN 6 2025 AM 11:00

Certificate of Service

I, Brock Streauslin, do hereby certify that on June 3, 2025, a true and correct copy of the foregoing "Section 63.71 Application of Consolidated Communications of Pennsylvania Company" with Exhibits, was sent via United States mail, first-class, postage prepaid, to:

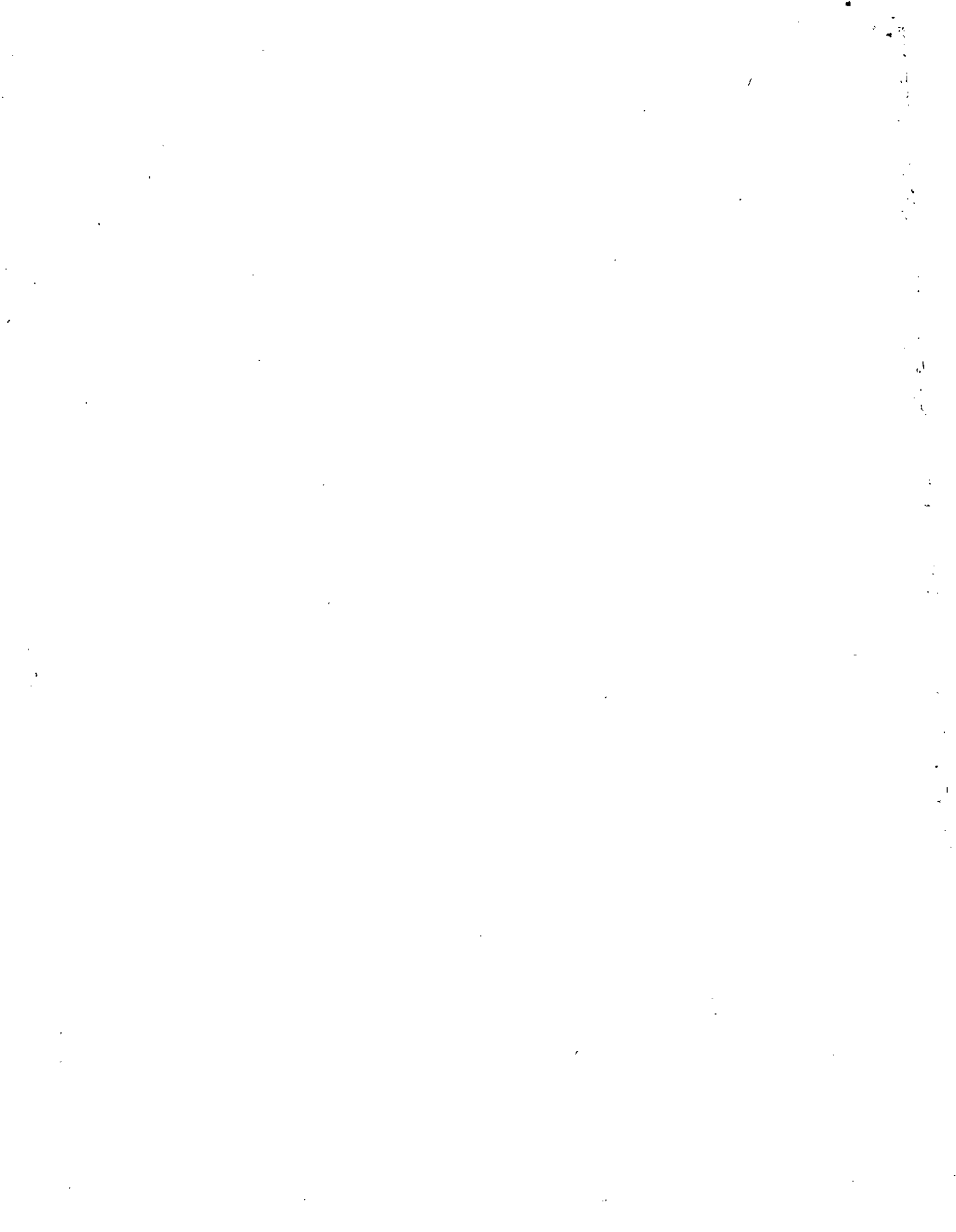
Secretary of Defense
Attn. Special Assistant for Telecommunications
Pentagon
Washington, DC 20301

The Honorable Josh Shapiro
Governor of Pennsylvania
501 North 3rd Street
508 Main Capitol Building
Harrisburg, PA 17120

Secretary's Bureau
Pennsylvania Public Utility Commission
Commonwealth Keystone Building
2nd Floor, Room-N201
Harrisburg, PA 17120

Brock Streauslin

Brock Streauslin



ST. CL

IRST. CLAS

IRST. CLAS

IRST. CLASS



Womble Bond Dickinson (US) LLP
2001 K Street, NW
Suite 400 South
Washington, DC 20006

\$2.310
US POSTAGE
FIRST-CLASS
FROM 20006
06/03/2025
Stamps.com



0633001175A2

FIRST CLASS MAIL

Secretary's Bureau
Pennsylvania Public Utility Commission
Commonwealth Keystone Building
2nd Floor, Room-N201
Harrisburg, PA 17120