

**Rail Safety Division Application Type (check all that apply):**

- E-Installation, removal or substitution of warning devices at a public crossing
- G-Construction, alteration, relocation, abolition or suspension of a public crossing
- P-Installation of traffic signals with preemption on the approach to a public crossing
- W-Installation of a fixed utility company's facilities at a public crossing (Pipe & Wire)
- X-Exemption from the Commission's railroad clearance requirement

**Application Docket No.**  
*To Be Assigned*

**For Applications E/G/P/W use caption 1, for X use caption 2 (delete unused caption):**

**In re: (1)** Application of Greenlight Networks for approval to alter the public crossing 851862H by an aerial build attaching to existing PPL poles using 3/8-inch strand and an over lashed 432 fiber where 1452-1488 Schoenersville Rd, Bethlehem, PA, 18018, USA crosses above grade the track(s) of Norfolk Southern Railroad Co, located in Bethlehem, PA in Northampton county. **(2)** Application of Greenlight Networks for approval of an exemption from the Commission's Clearance Requirements (52 Pa. C.S. §§ 33.121 - 33.126) for a track operated by Norfolk Southern Railroad Co, located in Bethlehem, PA in Northampton county.

To Pennsylvania Public Utility Commission:

1. The name, address, telephone number, and e-mail address of the applicant are:  
Greenlight Networks, 1777 E Henrietta Rd, Rochester NY 14623, 978-857-3114
2. The name, address, telephone number, and e-mail address of the applicant's attorney are:  
Kevin Espinoza, 1777 E Henrietta Rd Building A, Suite 120, Rochester, NY 14623  
, 716-463-2633, KEspinoza@greenlightnetworks.com
3. Greenlight Networks is expanding their fiber optic network to reach more customers in the Bethlehem, PA area. It will be aerial build, attaching to existing PPL poles. The build is crossing over a Norfolk Southern RR using a 3/8-inch strand and over lashing a 432 fiber.
4. The existing PPL poles along Schoenersville Road, crossing over CNJ Railroad will be upgraded by PPL, to a 5' larger pole on either side of the railroad crossing. Greenlight Networks will then attach their 432 fiber in their communications space on the pole, maintaining the minimum clearance from the cables to railroad. The exact crossing over the railroad will be at 40.63331047, -75.38833162. This proposal has been approved by PPL on Application 309776. This proposal is also in the middle of approval from Norfolk Southern on Application 3 09776.
5. The parties that may be affected by the proposed alteration are as follows (see attached Certificate of Service):  
PPL (existing utilities), Norfolk Southern, and Bethlehem city.
6. Our traffic control will include all signs, signals, markings, illumination, flaggers and other warning devices and their supports along roadways either approaching or at highway-rail grade crossings per regulation. A bucket truck will be on site for the actual over lashing fiber.
7. This is a largely funded project where Greenlight Network will own and maintain their fiber networks. Greenlight Networks is expanding their networks throughout PA and MD.

8. The application is necessary or proper for the following reason(s): Construction, alteration, relocation, abolition or suspension of a public crossing.

Wherefore, Nicole Burgess (maverick corporation on behalf of greenlight) prays your Honorable Commission to approve the application:

A handwritten signature in black ink, appearing to read "Nicole Burgess". The signature is written in a cursive, flowing style.

---

(Signature of Applicant)

## VERIFICATION

I, [name], hereby state that the facts above set forth are true and correct (or are true and correct to the best of my knowledge, information and belief) and that I expect to be able to prove the same at a hearing held in this matter. I understand that the statements herein are made subject to the penalties of 18 Pa. C.S. § 4904 (relating to unsworn falsification to authorities).



07/16/2025

---

Date

(Signature)

## CERTIFICATE OF SERVICE

I hereby certify that I have this day served a true copy of the foregoing document upon the participants, listed below, in accordance with the requirements of § 1.54 (*relating to service by participant*).

*[List names, addresses and email addresses of participants served.*

*Participants shall include the Pennsylvania Department of Transportation, the Railroad Company, the county and municipality where the crossing is located, and any fixed utility companies with facilities at the crossing.*

***The applicant is responsible to serve all parties a copy of its application and associated exhibits. The Commission does not serve any party on your behalf.]***

Dated this 15th day of July, 2025



---

(Signature)

## APPLICANT CHECKLIST (FOR REFERENCE ONLY)

- DOT numbers are included, where applicable
- Railroad owners and all operators have been identified
- Location map exhibit and gps coordinates have been included
- A plan of the proposed work, including the following items drawn and labeled, where applicable:
  - North arrow
  - Scale / Scale bar
  - Railroad right-of-way lines with dimensions
  - Roadway/Highway right-of-way lines with dimensions
  - Railroad track locations
  - Railroad or highway structures involved
  - Other applicable railroad or roadway/highway features
  - Proposed alteration
  - Aerial wireline installations:
    - Pole locations, with identifying pole numbers and pole owners
    - Span lengths from pole to pole
    - Clearances with respect to the top of rail to the proposed facility at the railroad crossing
    - Clearances from existing aerial catenary wirelines or power wirelines to the proposed facility
  - Underground pipeline/conduit installations:
    - Clearances with respect to the base of rail (at grade) or top of the roadway (grade separated) to the top of the proposed facility
    - Launching/receiving pit locations, if applicable
- A verification of original signature in accordance with [52 Pa. Code § 1.36](#) is included
- A certificate of service on the parties of record in accordance with [52 Pa. Code § 1.54](#) is included and a copy of the application has been served upon those parties listed. **The Commission does not serve any party on your behalf.**

## RESOURCES

- [Sample Rail Safety Application Form](#)
- [Information on the application process and timelines](#)
- [Setting up an eFiling account](#) (**Documents larger than 11"x17" in size should be eFiled**)
- [FRA Rail Crossing Locator App](#) for help locating DOT numbers
- [FRA Grade Crossing Inventory](#) for more information about a crossing
- [Grade Crossing - Electronic Document Management System](#) for more information about a crossing
- [Railroad Company contact numbers](#)
- [List of Regional PennDOT District Office](#)
- [Municipal Statistics website](#) may be used in locating government officials

## QUESTIONS?

- For help with eFiling, visit [our eFiling website](#) and review the "Questions or Problems" section
- For specific questions regarding filling out this application, contact the Rail Safety Division



# GREENLIGHT NETWORKS

CORPORATE ADDRESS:  
1777 E. Henrietta Road Suite #120  
Rochester, NY 14623

SITE NAME: 309776-NFRR ROW

Bethlehem, PA

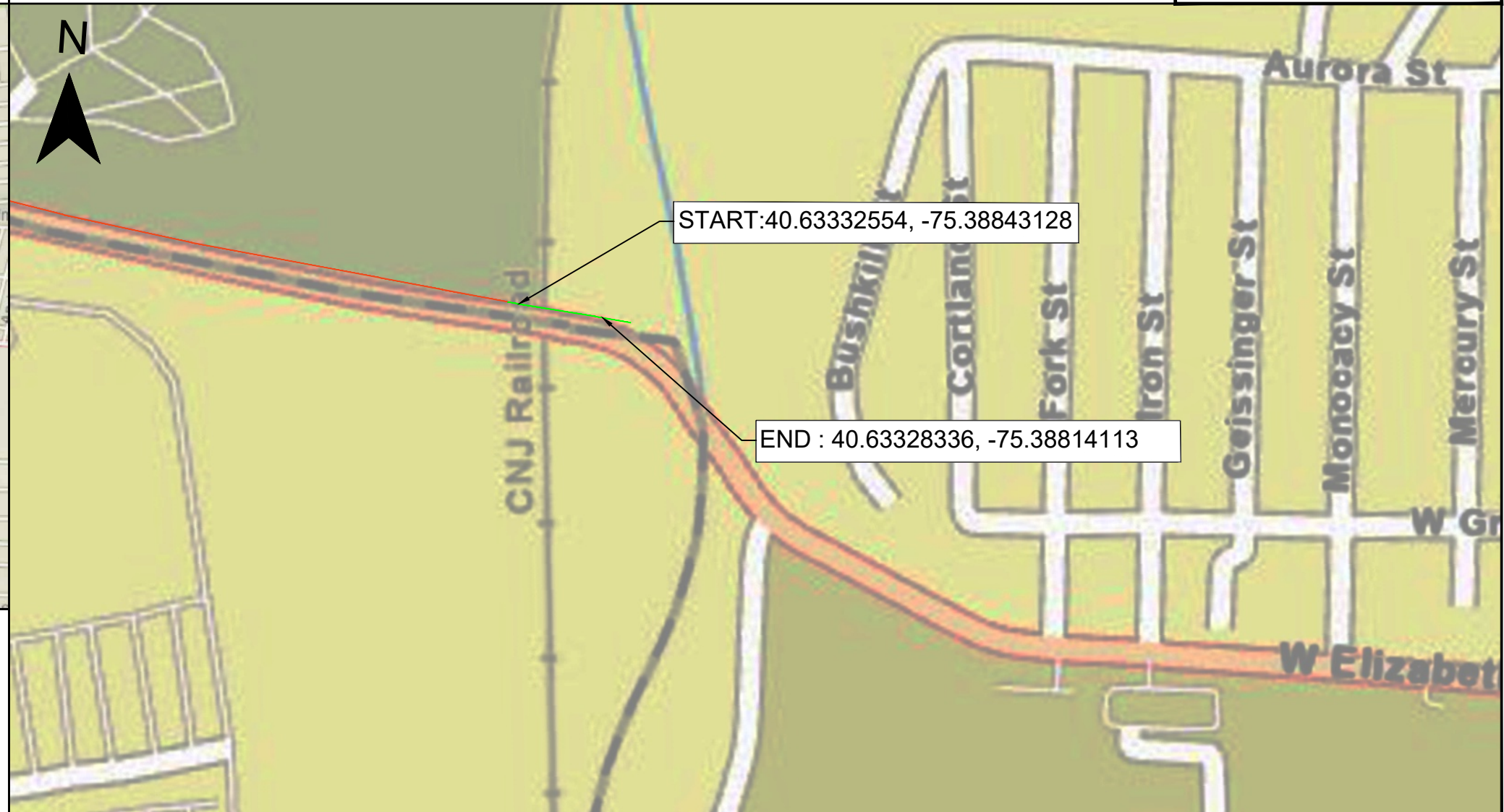
AER Footage: 223'

Bethlehem

OUTSIDE PLANT CONSTRUCTION FIBER  
OPTIC CABLE ROUTE BETHLEHEM, PA  
CROSSING NORFOLK SOUTHERN RR.  
BUILD WILL BE AN AERIAL 432 FIBER.



PE STAMP:



START: 40.63332554, -75.38843128

END : 40.63328336, -75.38814113

NOTE:  
THE PLAT, PARCEL AND RIGHT OF WAY DIMENSIONAL INFORMATION HAS BEEN ACQUIRED AND PLOTTED ON THESE PLANS USING THE BEST AVAILABLE DATA AND AERIAL IMAGERY. ALL UTILITY INFORMATION SHOWN ON PLANS WAS ACQUIRED FROM THE BEST AVAILABLE DATA AND AS REASONABLY OBTAINED BY PHYSICAL FIELD SURVEY, IT REMAINS THE RESPONSIBILITY OF OTHERS TO FIELD VERIFY ALL DATA PRIOR TO PROJECT START. LINE LOCATES ARE THE RESPONSIBILITY OF OTHERS TO VERIFY CONFLICT HORIZONTALLY AND VERTICALLY OF EXISTING FACILITIES.



DO NOT SCALE DRAWINGS

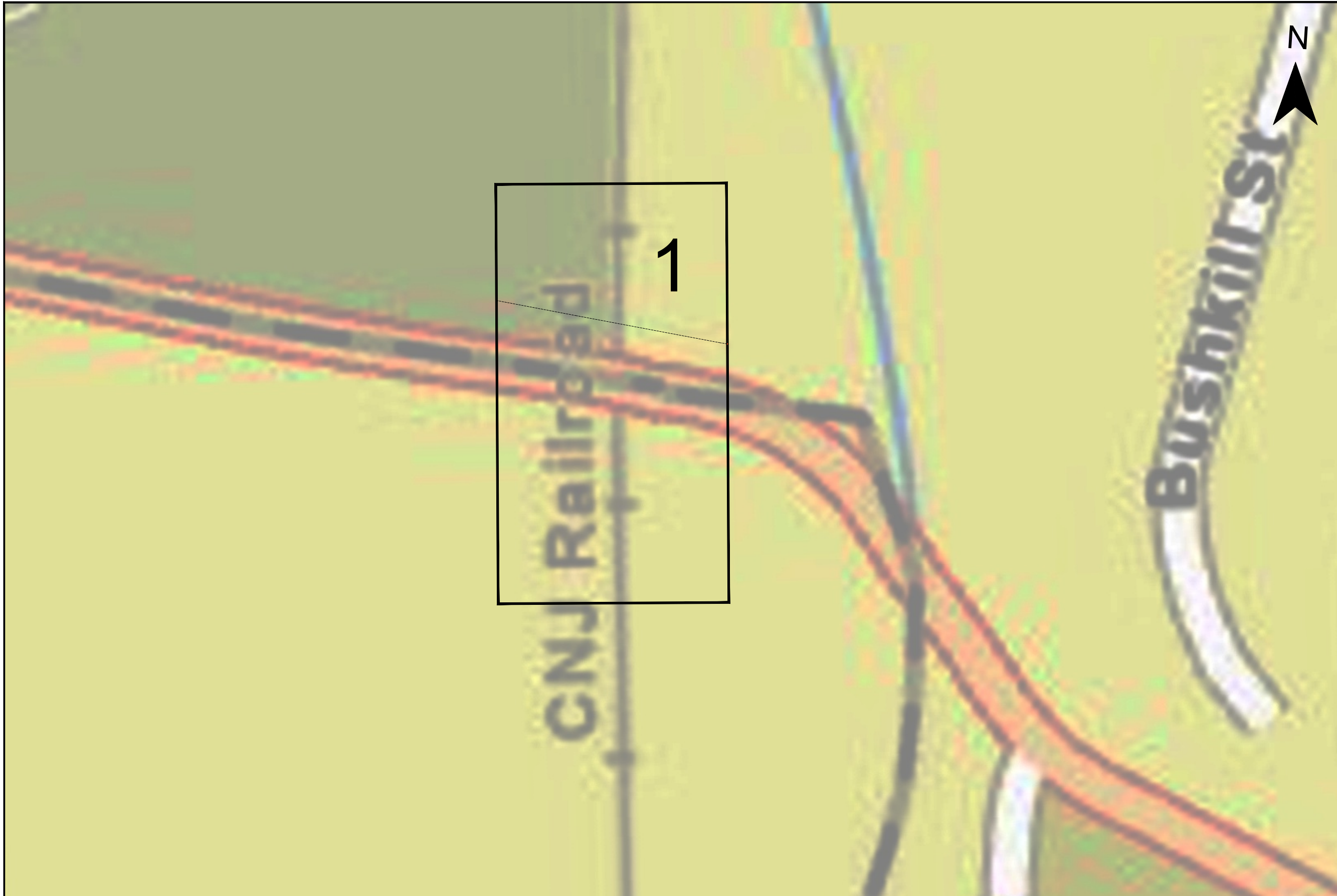
CONTRACTOR SHALL VERIFY ALL PLANS & EXISTING DIMENSIONS & CONDITIONS ON THE ROUTE BEFORE PROCEEDING WITH THE WORK AND IS RESPONSIBLE FOR SAME

PROJECT NO:	1	23/05/2025
DRAWN BY:		
CHECKED BY:		
PERMIT NAME:		23/05/2025

TITLE SHEET

SHEET NUMBER

T-1



GREENLIGHT NETWORKS

GENERAL NOTES:

PE STAMP:

REV	DESCRIPTION	DATE
0		23/05/2025

DRAWN BY:  
 CHECKED BY:  
 DATE PRINTED: 23/05/2025



greenlight  
networks



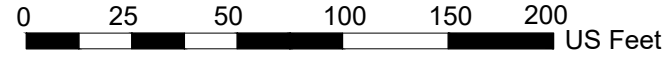
INDEX

SHEET NUMBER

I-1

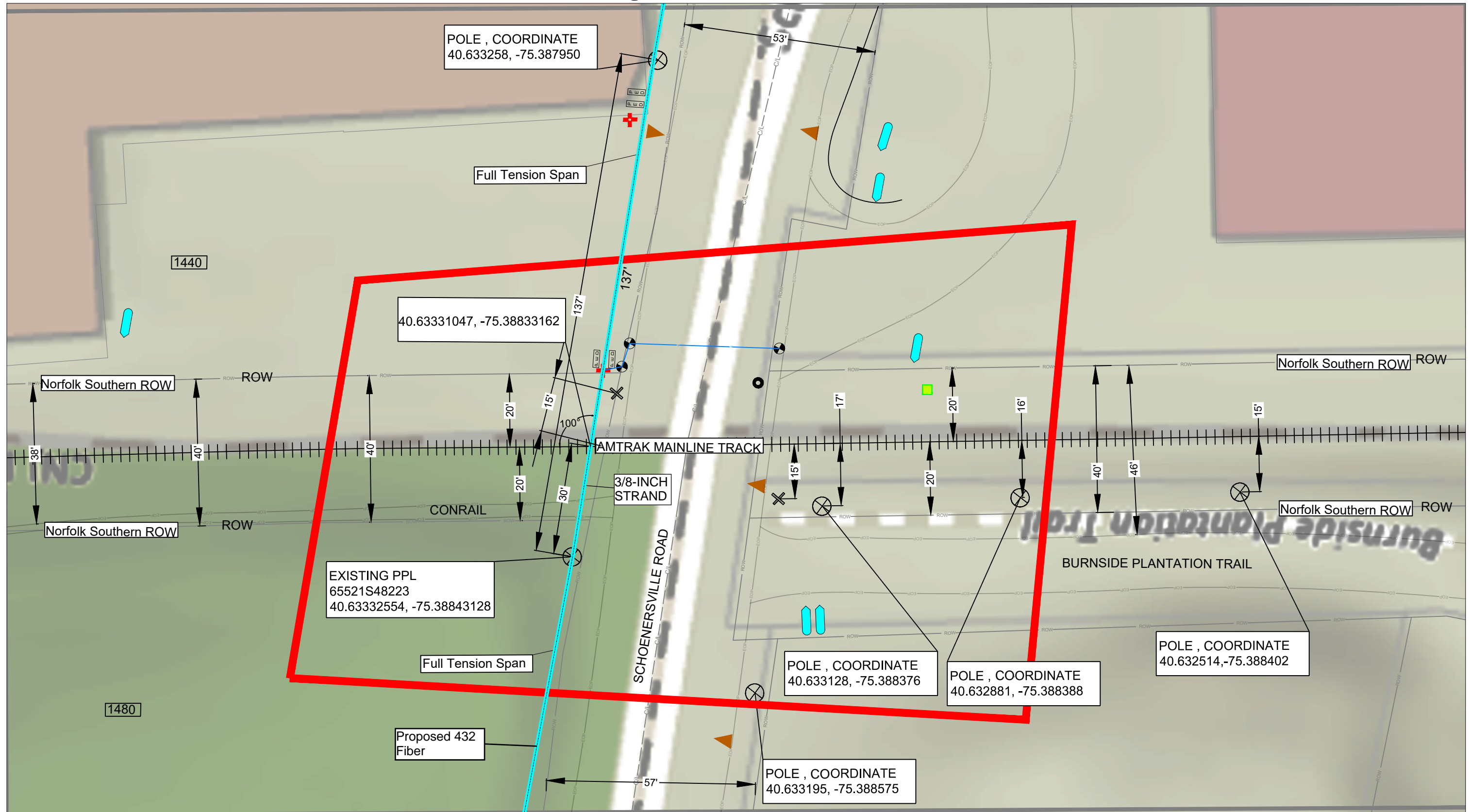
New Fiber: 3/8"

PE STAMP:



309776-NFRR ROW Page 1 of 1

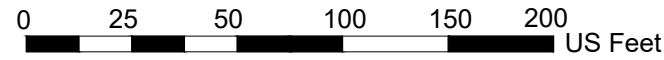
Water	Transformer	Marker	Poles
Gas	Sewer	Other Manhole	Fibrecable
Waste/Storm	Pedestal	Hydrant	Guying
Railway Track	Signal Gate	Valve	Permit Area
Power	Cabinet	Sewer Inlet	Vault



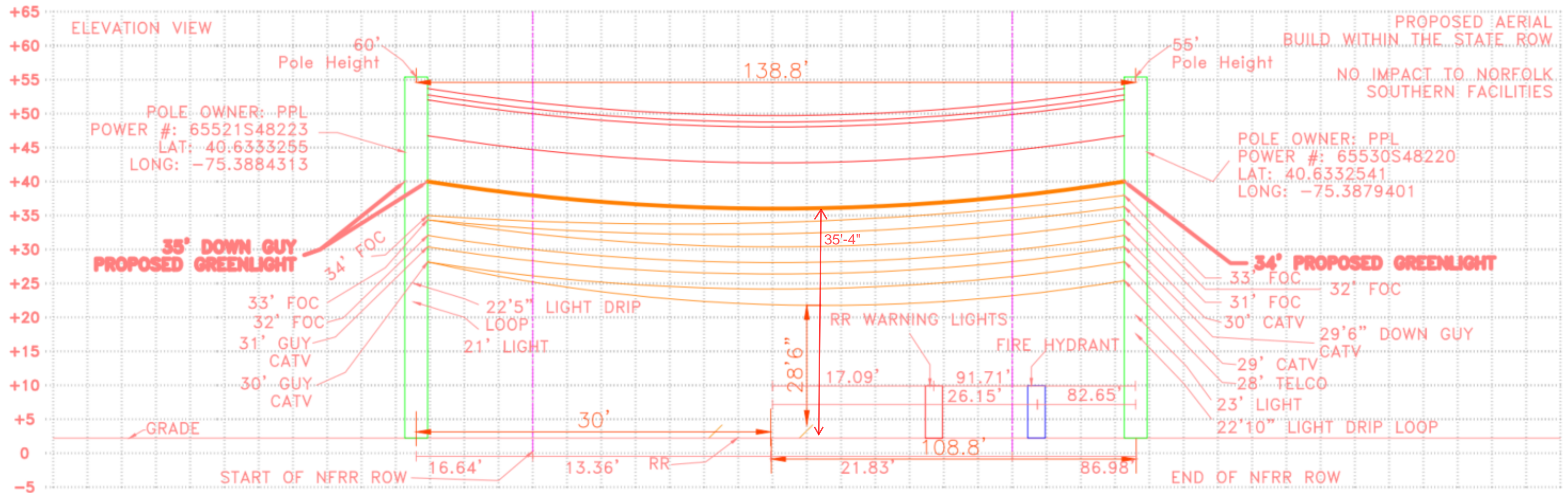
PE STAMP:



# PROPOSED RAILROAD CROSSING CONDITIONS APPROVED BY POLE OWNER - PPL



309776-NFRR ROW Page 1 of 1



# Make Ready Notification

## Application Details

### FCC Timeline

Large Order

Due date for communications make-ready	June 7, 2025
Due date for power make-ready	135 days from receipt of Construction Make Ready Payment

*Any entity with an existing attachment may modify the attachment consistent with the specified make-ready before the specified due date. If make-ready is not completed by the specified due date, the applicant may complete the make-ready specified.*

Date Notification Sent: March 24, 2025

Customer Name	Greenlight Networks PA, LLC
Customer Job	MAV_ECPPL001B
PPL App #	309776
PPL WR #	
PPL WO #	13875051
PPL Region	Lehigh
PPL Area	Bethlehem
Link to Map & Photos	<a href="#">Desktop Link</a>
Foreign App #	

### Contact Addresses of Related Parties

#### PPL

ATTN: Rana Souryal 908-239-1763 ( rsouryal@pplweb.com, ppl@katapultwebsites.com )  
P.O. Box 25239  
Lehigh Valley, PA 18002-5239

#### Greenlight Networks PA, LLC

Greenlight Networks  
1777 E. Henrietta Road Suite #120  
Rochester, NY 14623

REMAINING CONTACTS REMOVED UNTIL FINAL DESIGN



Katapult Engineering  
54 Old York Road, Dillsburg PA 17019  
717-432-0716  
[www.katapultengineering.com](http://www.katapultengineering.com)

# Summary of Work Required

No. In App (SCID)	PPL Pole # (Owner)	PPL Make Ready	Foreign Utility Make Ready	Customer Directive	Cost Causer	GPS Coord.
25 (025)	65521S48223	Replace 55' class 2 pole with 60' class 2 pole	<p><b>Unknown Company:</b></p> <ul style="list-style-type: none"> <li>• Attach Down Guy at 35'-0" and install new anchor. Place on new anchor rod with 12' lead at 281° and attach 10M (3/8" UG) (7/0) guy.</li> </ul> <p><b>Metropolitan Fiber Systems C/O MCI:</b></p> <ul style="list-style-type: none"> <li>• Fiber Optic Com at 31'-9": Transfer to new pole at 34'-0".</li> </ul> <p><b>Level 3 (Formerly TelCove PECO):</b></p> <ul style="list-style-type: none"> <li>• Fiber Optic Com at 29'-0": Transfer to new pole at 33'-0".</li> </ul> <p><b>XO Communications, Inc.:</b></p> <ul style="list-style-type: none"> <li>• Fiber Optic Com at 28'-2": Transfer to new pole at 32'-0".</li> </ul> <p><b>RCN:</b></p> <ul style="list-style-type: none"> <li>• CATV Com at 27'-2": Transfer to new pole at 31'-0".</li> <li>• CATV Com at 27'-2": Transfer to new pole at 31'-0".</li> <li>• CATV Com at 27'-2": Transfer to new pole at 31'-0".</li> <li>• Guy at 27'-2": Transfer to new pole at 31'-0".</li> </ul> <p><b>Service Electric Cable TV Inc.:</b></p> <ul style="list-style-type: none"> <li>• CATV Com at 26'-2": Transfer to new pole at 30'-0".</li> <li>• CATV Com at 26'-2": Transfer to new pole at 30'-0".</li> <li>• Guy at 26'-2": Transfer to new pole at 30'-0".</li> </ul> <p><b>City of Bethlehem:</b></p> <ul style="list-style-type: none"> <li>• Street Light at 23'-2": Transfer to new pole at 21'-0".</li> <li>• Streetlight Drip Loop at 22'-5": Transfer to new pole at 22'-5".</li> </ul>	<p><b>Greenlight Networks PA, LLC:</b></p> <ul style="list-style-type: none"> <li>• Attach Fiber Optic Com at 35'-0". Bond to ground wire. Bond to ground wire.. Bond to ground wire.</li> <li>• Install 3/4" anchor rod with 12' lead at 281° (W).</li> </ul>	100% Greenlight Networks PA, LLC	40.633316, -75.388429

# Summary of Work Required

No. In App (SCID)	PPL Pole # (Owner)	PPL Make Ready	Foreign Utility Make Ready	Customer Directive	Cost Causer	GPS Coord.
26 (026)	65530S48220	Replace 50' class 3 pole with 55' class 1 pole	<p><b>City of Bethlehem:</b></p> <ul style="list-style-type: none"> <li>• Street Light at 32'-0": Ground Bracket. Transfer to new pole at 23'-0".</li> <li>• Streetlight Drip Loop at 28'-6": Transfer to new pole at 22'-10".</li> </ul> <p><b>Metropolitan Fiber Systems C/O MCI:</b></p> <ul style="list-style-type: none"> <li>• Fiber Optic Com at 28'-5": Transfer to new pole at 33'-0".</li> </ul> <p><b>Level 3 (Formerly TelCove PECO):</b></p> <ul style="list-style-type: none"> <li>• Fiber Optic Com at 27'-7": Transfer to new pole at 32'-0".</li> </ul> <p><b>XO Communications, Inc.:</b></p> <ul style="list-style-type: none"> <li>• Fiber Optic Com at 27'-0": Transfer to new pole at 31'-0".</li> </ul> <p><b>RCN:</b></p> <ul style="list-style-type: none"> <li>• CATV Com at 26'-0": Transfer to new pole at 30'-0".</li> <li>• CATV Com at 25'-7": Transfer to new pole at 29'-6".</li> <li>• Down Guy at 25'-7": Transfer to new pole at 29'-6".</li> </ul> <p><b>Service Electric Cable TV Inc.:</b></p> <ul style="list-style-type: none"> <li>• CATV Com at 25'-0": Transfer to new pole at 29'-0".</li> </ul> <p><b>Verizon Pennsylvania Inc.:</b></p> <ul style="list-style-type: none"> <li>• Telco Com at 24'-0": Transfer to new pole at 28'-0".</li> </ul>	<p><b>Greenlight Networks PA, LLC:</b></p> <ul style="list-style-type: none"> <li>• Attach Fiber Optic Com at 34'-0". Bond to ground wire.</li> </ul>	100% PPL Company Pole fails PPL spec.	40.633249, -75.387955
27 (027)	65539S48218	No PPL Company Make Ready	No Foreign Utility Make Ready	<p><b>Greenlight Networks PA, LLC:</b></p> <ul style="list-style-type: none"> <li>• Attach Fiber Optic Com at 26'-0". Bond to ground wire.</li> </ul>	No Make Ready	40.633223, -75.387746
28 (028)	65548S48216 (Verizon Pennsylvania Inc.)	No PPL Company Make Ready	No Foreign Utility Make Ready	<p><b>Greenlight Networks PA, LLC:</b></p> <ul style="list-style-type: none"> <li>• Attach Fiber Optic Com at 32'-5".</li> <li>• Attach Down Guy at 32'-5". Install an aux eye attachment on existing anchor rod with 15' lead at 15° and attach 6.6M (1/4" EHS) (7/0) guy.</li> </ul>	No Make Ready	40.633202, -75.387532
29 (029)	65562S48212	No PPL Company Make Ready	No Foreign Utility Make Ready	<p><b>Greenlight Networks PA, LLC:</b></p> <ul style="list-style-type: none"> <li>• Attach Fiber Optic Com at 33'-7".</li> </ul>	No Make Ready	40.632999, -75.386954
30 (030)	65570S48211	No PPL Company Make Ready	<p><b>Metropolitan Fiber Systems C/O MCI:</b></p> <ul style="list-style-type: none"> <li>• Down Guy at 24'-0": Upgrade existing down guy strand to a 10M (3/8" UG) (7/0) strand size.</li> </ul>	<p><b>Greenlight Networks PA, LLC:</b></p> <ul style="list-style-type: none"> <li>• Attach Fiber Optic Com at 25'-7".</li> <li>• Attach Down Guy at 25'-7". Install an aux eye attachment on existing anchor rod with 16' lead at 2° and attach 10M (3/8" UG) (7/0) guy.</li> <li>• Attach Fiber Optic Com at 25'-5".</li> <li>• Attach Down Guy at 25'-5". Place on existing anchor rod with 15' lead at 125° and attach 10M (3/8" UG) (7/0) guy.</li> </ul>	100% Metropolitan Fiber Systems C/O MCI Down guys failed loading analysis.	40.632930, -75.386784
31 (031)	65568S48207	• Neutral at 29'-4": Install ground rod and bond neutral to ground.	No Foreign Utility Make Ready	<p><b>Greenlight Networks PA, LLC:</b></p> <ul style="list-style-type: none"> <li>• Attach Fiber Optic Com at 26'-9". Bond to ground wire.</li> </ul>	100% Greenlight Networks PA, LLC	40.632572, -75.386791

## CERTIFICATE OF SERVICE

I hereby certify that I have this day served a true copy of the foregoing document upon the participants, listed below, in accordance with the requirements of § 1.54 (*relating to service by participant*).

(Continues next page)

## CERTIFICATE OF SERVICE

I hereby certify that I have this day served a true copy of the foregoing document upon the participants, listed below, in accordance with the requirements of § 1.54 (*relating to service by participant*).

Dated this       day of       ,20

Nilsa B. yz  
(Signature)

# PENNSYLVANIA PUBLIC UTILITY COMMISSION

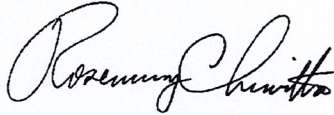
IN THE MATTER OF THE APPLICATION OF DOCKET NO: A-2023-3043448

*Application of Greenlight Networks PA, LLC for Approval to Offer, Render, Furnish or Supply Telecommunications Services as a Competitive Access Provider to the Public in the Commonwealth of Pennsylvania.*

Effective Date: February 19, 2025

The Pennsylvania Public Utility Commission hereby certifies that after an investigation and/or hearing, it has, by its report and order made and entered, found and determined that the granting of the application is necessary or proper for the service, accommodation, convenience and safety of the public and hereby issues to the applicant this **CERTIFICATE OF PUBLIC CONVENIENCE** evidencing the Commission's approval.

In Witness Whereof, The PENNSYLVANIA PUBLIC UTILITY COMMISSION has caused these presents to be signed and sealed, and duly attested by its secretary at its office in the city of Harrisburg this 19<sup>th</sup> day of February, 2025.

  
Secretary

