





COMMONWEALTH OF PENNSYLVANIA  
PENNSYLVANIA PUBLIC UTILITY COMMISSION  
P.O. BOX 3265, HARRISBURG, PA 17105-3265

May 17, 1995

A-00110138

IN REPLY PLEASE  
REFER TO OUR FILE

WILLIAM J CARLIN SOLICITOR  
LOWER MAKEFIELD TOWNSHIP  
680 MIDDLETOWN BOULEVARD  
P O BOX 308  
LANGHONRE PA 19047

DOCKETED  
JUL 3 1995

Application of the Township of Lower Makefield for approval of the alteration of the crossing (AAR No. 587 635 M) where Heacock Road (S.R. 2029) crosses the tracks of Consolidated Rail Corporation, in Lower Makefield Township, Bucks County.

The Commission, at Public Meeting held May 11, 1995, approved the final construction plans submitted by Pennsylvania Department of Transportation on behalf of Township of Lower Makefield in the above entitled proceeding.

Very truly yours,

John G. Alford  
Secretary

Certified Mail  
Receipt Requested

cc: All Parties of Record  
JEP

DOCUMENT  
FOLDER

PROJECT	QUANTITY	SECTION	FOOTE	SCALE	TOTAL SHEETS
FEUG-0	1	SECTION 101	1	1" = 40'	27

# COMMONWEALTH OF PENNSYLVANIA



## DEPARTMENT OF TRANSPORTATION

### DRAWINGS FOR CONSTRUCTION OF

STATE ROUTE 2029 SECTION 101  
 IN BUCKS COUNTY

From Sta. 59+73.54 To Sta. 116+50.00 Length 549.72 Ft. 1.035 MI.  
 From Seg. 150 Offset 0000 To Seg. 170 Offset 0623

**RECEIVED**  
 APR 11 1995  
 SECRETARY'S OFFICE  
 PENNSYLVANIA COMMISSION

**DOCKETED**  
 JUL 3 1995

APR 12 1995  
 A-C 0110138

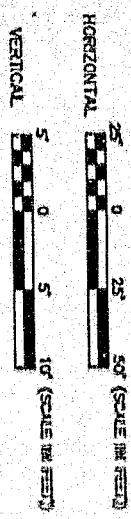
**DOCUMENT FOLDER**

**ALSO INCLUDED:**

- THREE SETS (EACH SET) 1
- PAVEMENT MARKING AND SIGNING PLAN 2
- TRAFFIC CONTROL PLAN (DETAILED SCALE) 1
- TRAFFIC SIGNAL PLAN 1
- RETAINING WALL SECTION PLAN 1
- PA PUBLISHER'S COMMISSION 1

BUREAU OF TRANSPORTATION & SAFETY  
 ROAD SAFETY DIVISION

P.U.C. COMPLAINT DOCKET NO. A-00110138



#### DESIGN DESIGNATION

- JUNIOR ARTERIAL (URBAN)
- 50 MPH (POSTED 40 MPH)
- 60'
- VAR. 0'-10'
- 10' PAINTED
- 0'

#### TRAFFIC DATA

- CURRENT A.D.T.
- DESIGN YEAR A.D.T.
- CHAIR
- T
- TRUCK (1994)
- TRUCKS (200-40)
- 50%
- 4%

**CERTIFIED CORRECT PLANS**

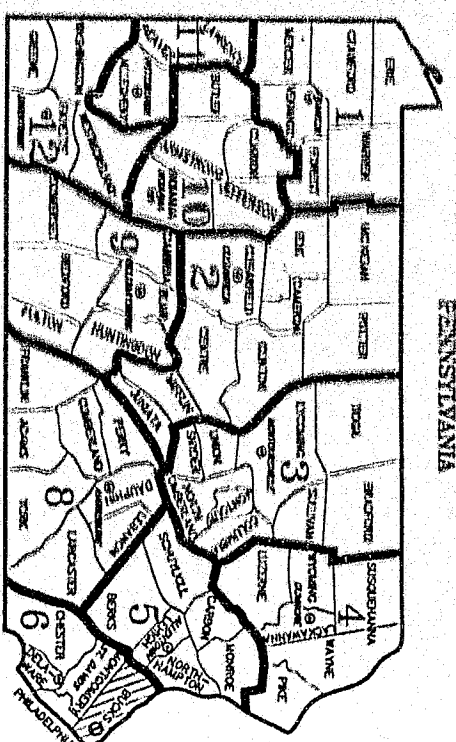
Engineer: *[Signature]*  
 Approved by: *[Signature]*  
 SECRETARY: *[Signature]* MAY 11 1995



Prepared by: *[Signature]*  
 CONSULTING ENGINEER  
 MEMBERSHIP PENNSYLVANIA

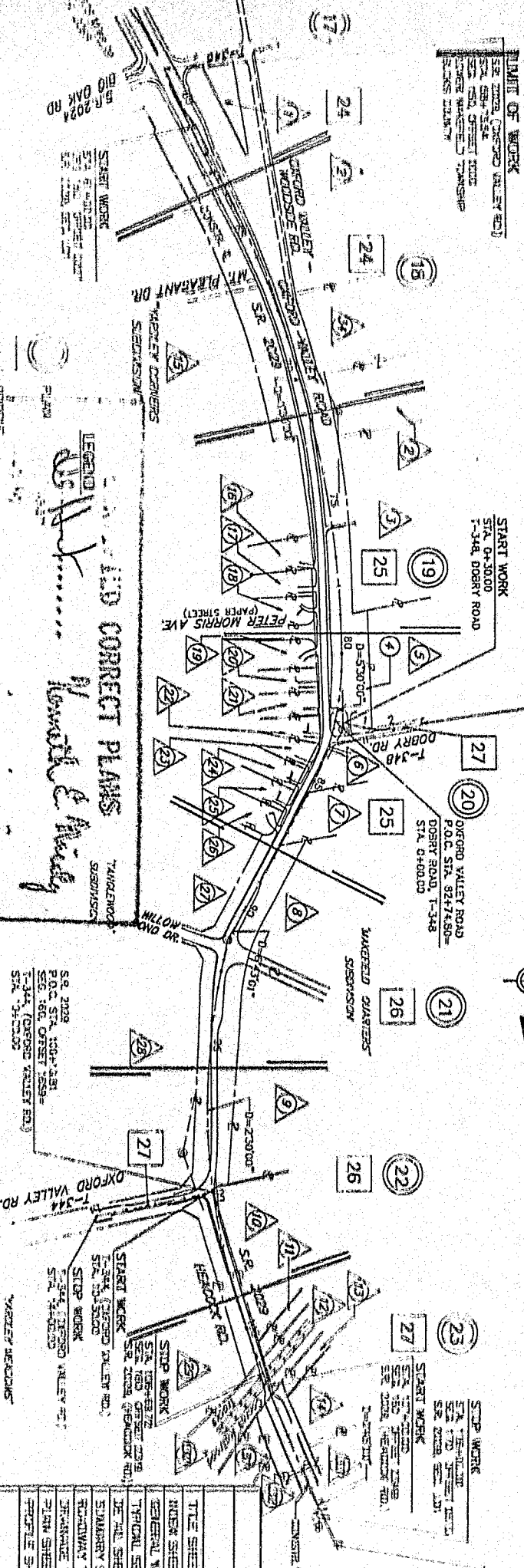
Approved: *[Signature]* 11-18-94  
 SECRETARY OF TRANSPORTATION

PROJECT	DATE	SHEET
LOWER WAKEFIELD TOWNSHIP	2 OF 27	
REVISIONS	DATE	BY



PENNSYLVANIA

- PROPERTY OWNERS**
- 1. PAULINE L. HENNER
  - 2. BELLEFIELD DEVELOPMENT CORP.
  - 3. BELLEFIELD DEVELOPMENT CORP.
  - 4. LOWER WAKEFIELD TOWNSHIP
  - 5. MARIE ANN TAYLOR
  - 6. BEVERLY WADKIN & THERESA P. WADKIN H/W
  - 7. THERESA WADKIN
  - 8. EMM DEVELOPMENT COMPANY
  - 9. EMM DEVELOPMENT COMPANY
  - 10. JOHN F. WENGER & PAULINE L. HENNER H/W
  - 11. HAZEL RAYNE
  - 12. CONSOLIDATED RAIL CORPORATION
  - 13. HAROLD RAYNE
  - 14. LOWER WAKEFIELD TOWNSHIP
  - 15. HAZEL CONNERS HOMEOWNERS
  - 16. JANE CAMERON & VINCENT J. CAMERON, H/W
  - 17. FRANCIS BAYNON
  - 18. ANDREW L. BHALLY
  - 19. MICHAEL W. QUINN & DONNA W. QUINN, H/W
  - 20. ROBERT E. GORE
  - 21. JACOB STEVENS & JEAN BAYNON
  - 22. CLARENCE W. MARSHALL & IDA P. MARSHALL, H/W
  - 23. WILLIAM DETRALZ & JANE W. DETRALZ, H/W
  - 24. JOSEPH W. RODGERS & JOANNE W. RODGERS, H/W
  - 25. EDWARD R. CONNE & GEORGE B. CONNE, H/W
  - 26. ALPHEUS G. FUNK & MELITA L. FUNK, H/W
  - 27. TANGLEWOOD COMMUNITY ASSOC.
  - 28. TANGLEWOOD COMMUNITY ASSOC.
  - 29. HAROLD W. DAVIS & NICHOLAS WARTZEL
  - 30. CONSOLIDATED RAIL CORPORATION
  - 31. LOWER WAKEFIELD TOWNSHIP MUNICIPAL AUTH.
  - 32. LOWER WAKEFIELD TOWNSHIP
  - 33. WAKEFIELD GLEN LTD. PARTNERSHIP
  - 34. BELLEFIELD DEVELOPMENT CORP.



**POINT OF WORK**  
 SEE 2008, (OXFORD VALLEY RD.)  
 STA. 18+00.00  
 STA. 18+50.00  
 CENTER WAKEFIELD TOWNSHIP  
 P.O.C. STA. 18+25.00

**START WORK**  
 STA. 0+30.00  
 T-348, DOBRY ROAD

**STOP WORK**  
 STA. 3+00.00  
 T-348, DOBRY ROAD

**START WORK**  
 STA. 0+00.00  
 OXFORD VALLEY ROAD  
 P.O.C. STA. 924+450-  
 DOBRY ROAD T-348  
 STA. 0+00.00

**START WORK**  
 STA. 18+00.00  
 STA. 18+50.00  
 STA. 19+00.00  
 CENTER WAKEFIELD TOWNSHIP  
 P.O.C. STA. 18+25.00

**POINT OF WORK**  
 SEE 2008, (WAKEFIELD ST.)  
 STA. 18+00.00  
 STA. 18+50.00  
 CENTER WAKEFIELD TOWNSHIP  
 P.O.C. STA. 18+25.00

**LEGEND**  
 1. PUBLIC UTILITY (INDICATED BY NUMBER AND TYPE)  
 2. PRIVATE UTILITY (INDICATED BY NUMBER AND TYPE)  
 3. UNIDENTIFIED UTILITY (INDICATED BY NUMBER AND TYPE)  
 4. UNIDENTIFIED UTILITY (INDICATED BY NUMBER AND TYPE)

**INDEX MAP**  
 SCALE  
 200'  
 400'

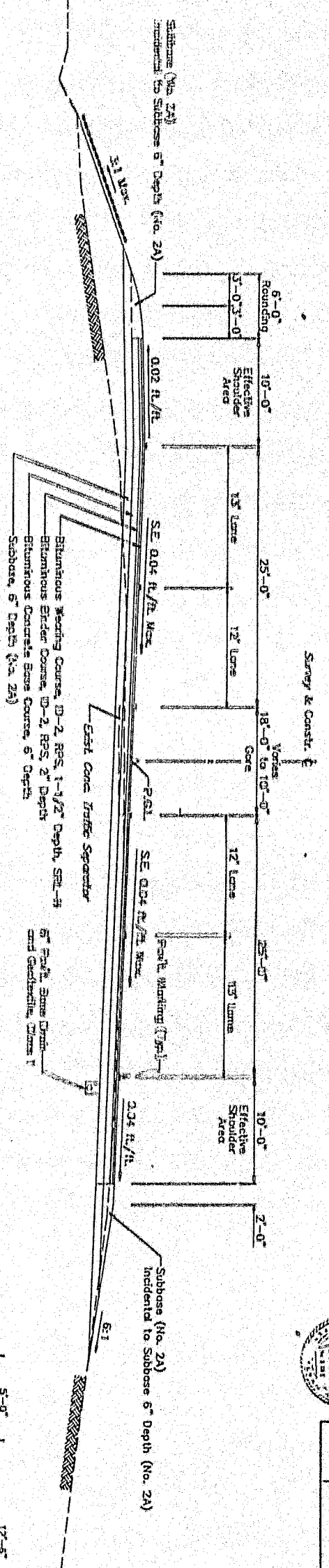
SHEET INDEX		SHEET
DESCRIPTION		
TITLE SHEET		1
INDEX SHEET		2
GENERAL NOTES, UTILITY USE, LOCATION MAP		3
TYPICAL SECTIONS		4 to 7
DE AD SHEET		8 to 9
STANDARD SHEET		10 to 11
ROADWAY BUILDING SHEETS		12 to 13
DRAINAGE BUILDING SHEETS		14 to 16
PLAN SHEETS		17 to 23
PROFILE SHEETS		24 to 27
<b>SUPPLEMENTAL PLANS</b>		
CROSS SECTIONS (UPON REQUEST)		43
PAVEMENT MARKING AND SIGNING PLAN		2
TERRAIN ELEVATION PLAN - (DETOUR ROUTE)		1
TRAFFIC SIGNAL PLAN		4
WETLAND MITIGATION PLANS		1

MAY 1 1 1995

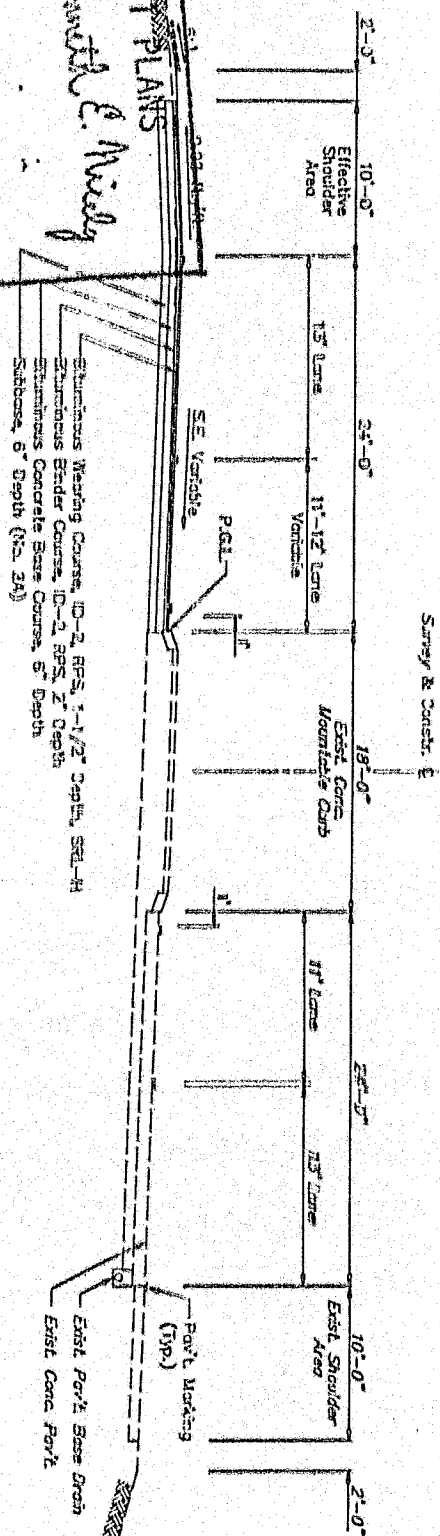


**LEGEND**

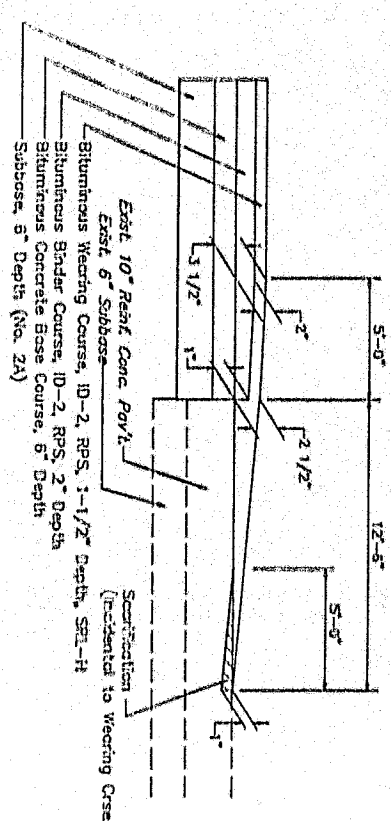
Shading & Soil Supplements  
Formula 1 Seeding - 3:1 Slopes or Flatter



**TYPICAL SECTION  
S.R. 2029, (OXFORD VALLEY RD.)  
SUPERELEVATED SECTION**  
Sta. 61+97.00 to Sta. 61+99.00



**TYPICAL SECTION  
PAVEMENT TRANSITION DETAIL**  
Sta. 61+00.00 LI  
Sta. 61+97.00 RI



**SEALING CONNECT PLANS**  
Kenneth E. Nixley  
PUBLIC UTILITY COMMISSION  
MAY 1 1 1995  
ATTN: *Ken Nixley*  
Secretary



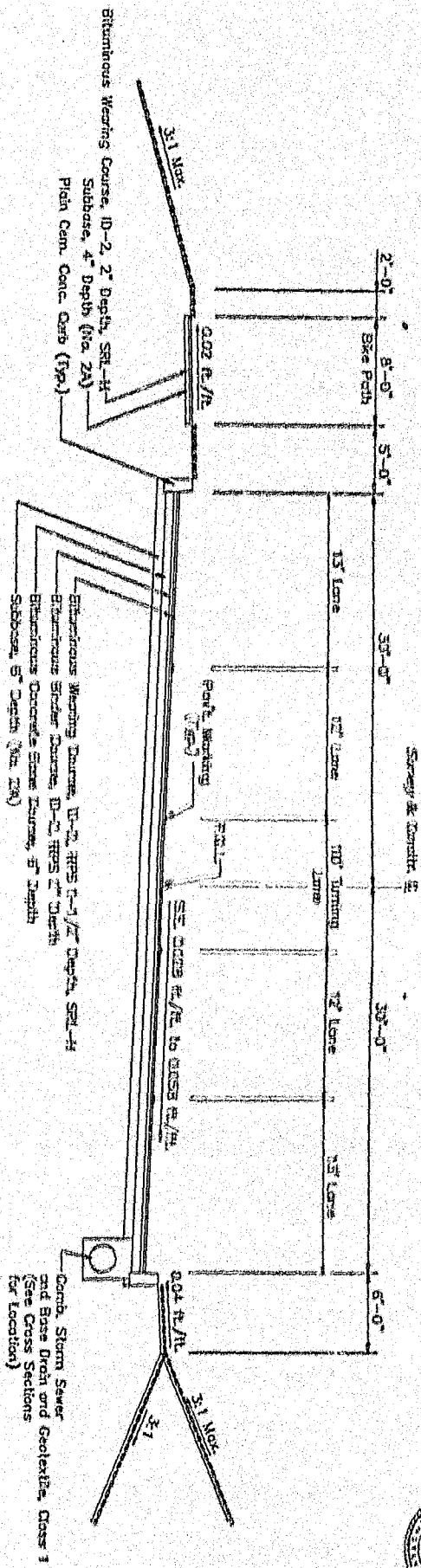
DISTRICT	COUNTY	ROUTE	SECTION	SHEET
6-0	BUCKS	262B	L01	4 OF 27
LOWER MARKETFIELD TOWNSHIP				DATE: 87
DESIGN NUMBER	REVISIONS	DATE	BY	

**LEGEND**

Seeding & Soil Supplements  
Formula L Seeding - 3:1 Slopes or Flatter

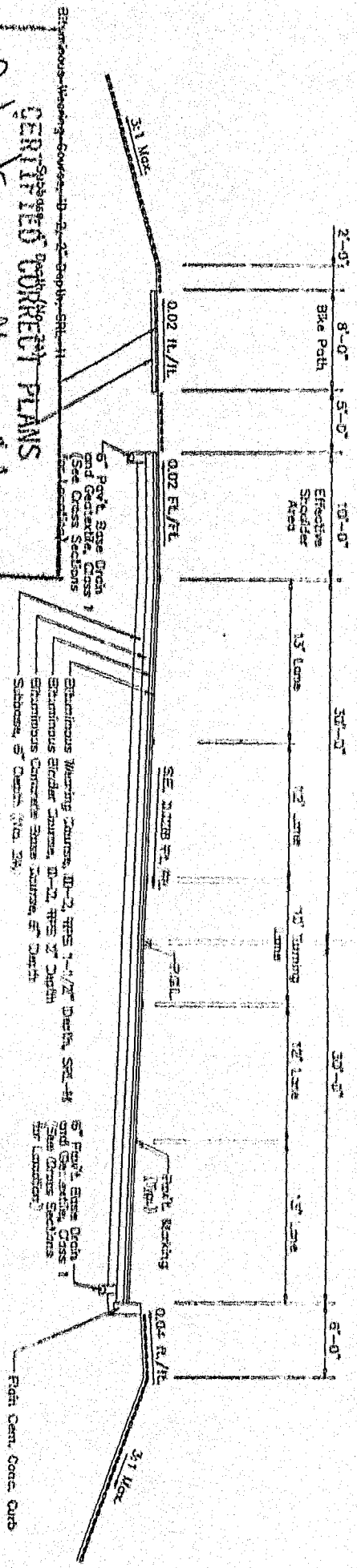


PROJECT	COUNTY	ROUTE	SECTION	SHEET
SR 2029	BERKS	209	15A	5 OF 27
OWNER	LOWER MERIDEN TOWNSHIP			
DATE				



**TYPICAL SECTION  
S.R. 2029 (OXFORD VALLEY RD.)  
SUPERELEVATED SECTION**

SEE 704-7530 TO STA. 65+55.00



**TYPICAL SECTION  
S.R. 2029 (OXFORD VALLEY RD.)  
SUPERELEVATED SECTION**

SEE 654-2020 TO STA. 70+75.00

**CERTIFIED CORRECT PLANS**

Approved by  
*James H. Smith*  
Engineer

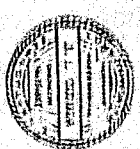
Approved by  
*Kenneth E. Mielig*  
Engineer

PENNA. PUBLIC UTILITY COMMISSION

TESTED BY  
*David R. Rinaldi*

MAY 11 1995

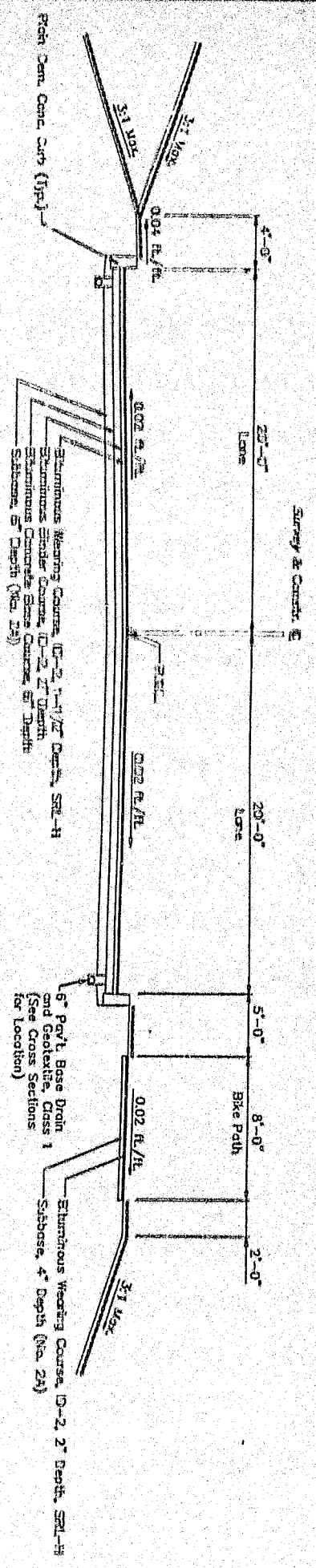




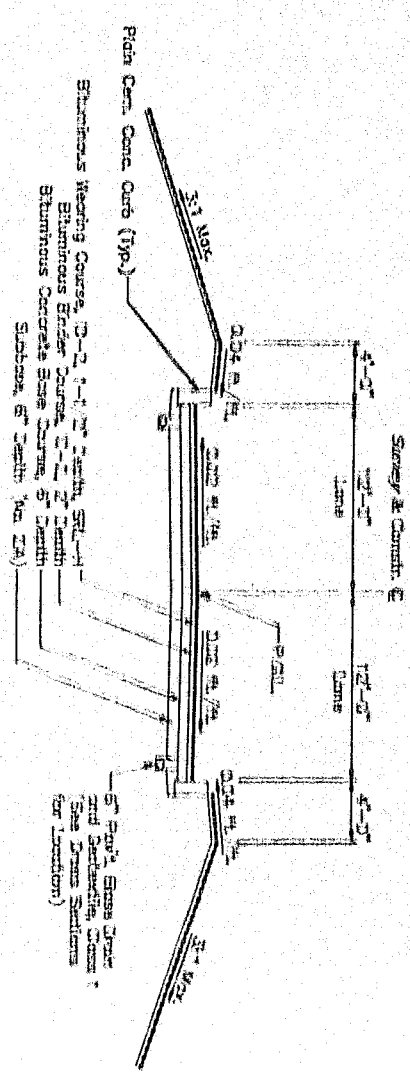
DATE	BY	REVISION
7 OF 27	CAE	BY

Sealing & Soil Supplements  
Formula 1 Sealing - 1/2" Strips or Filler

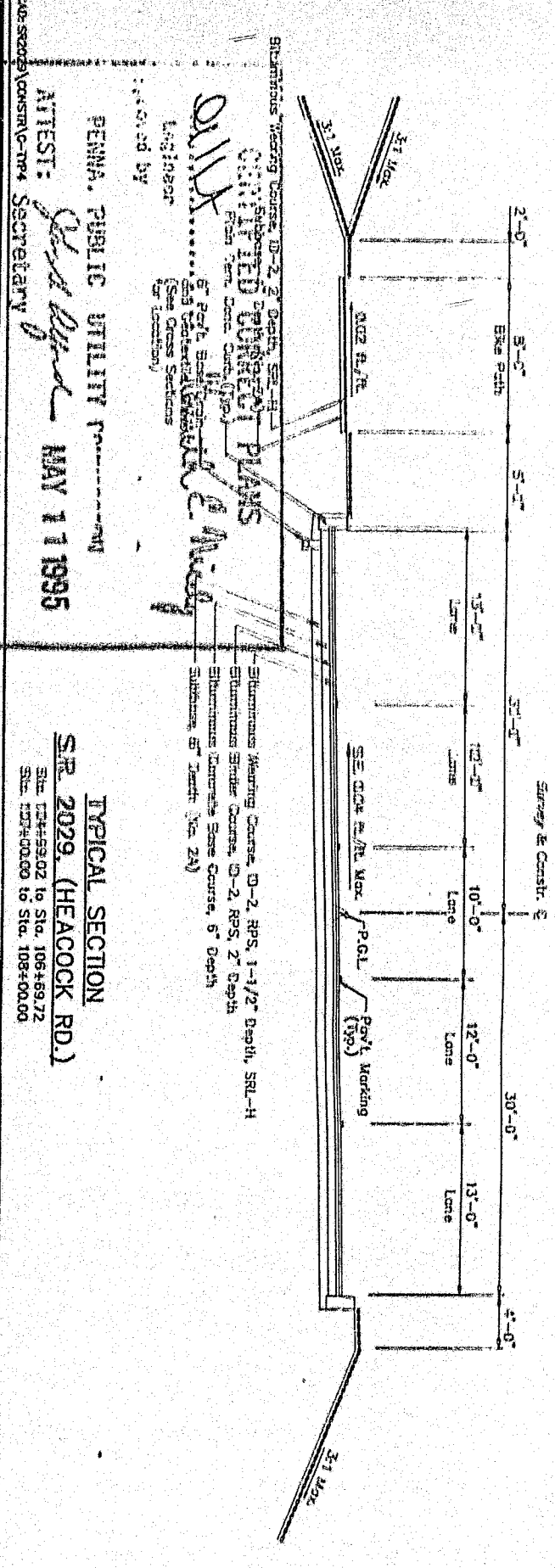
**LEGEND**



**TYPICAL SECTION**  
**I-344 (OXFORD VALLEY RD.)**  
Sta. 10 + 50.00 to Sta. 10 + 50.00



**TYPICAL SECTION**  
**I-348 (DOBERY RD.)**  
Sta. 0 + 00.00 to Sta. 0 + 50.00



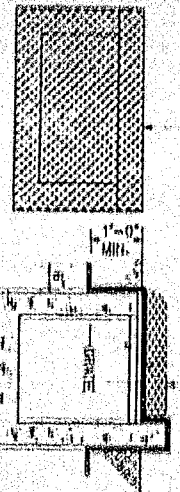
**TYPICAL SECTION**  
**SR 2029, (HEACOCK RD.)**  
Sta. 124 + 59.02 to Sta. 108 + 69.72  
Sta. 108 + 00.00 to Sta. 108 + 00.00

Submitted Pursuant to  
**PA 2029**  
Submitted Pursuant to  
**PA 2029**

Approved by  
*[Signature]*  
Engr. No. 10000

PENNA. PUBLIC UTILITY COMMISSION  
ATTEST: *[Signature]* MAY 11 1995  
Secretary

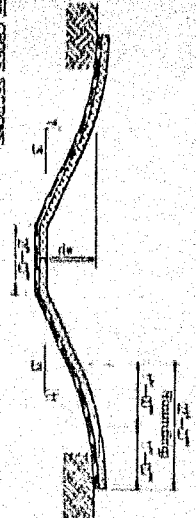
SECTION TYPE REPRESENTED MUST BE EQUAL TO OR GREATER THAN THAT SHOWN ON THIS SHEET.



NOTE: SEE PADDOT P. 13, 4th, 1993 FOR SPECIFICATIONS

**INLET PROTECTION**

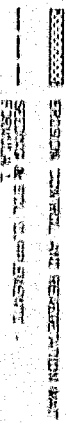
ITEM NO. 9000-0027



SEE CROSS SECTIONS FOR DETAILS OF PARALLEL DITCH

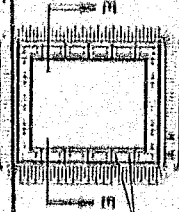
**PARALLEL DITCH**

SEE PADDOT P. 13, 4th, 1993 FOR SPECIFICATIONS

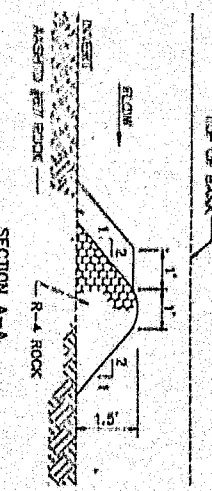


**NOTES**

1. GENERAL FILTER SANDS WILL BE CONSIDERED INCONGRUOUS TO THE TEMPORARY SETTLING BASIN.
2. BAGS AS REQUIRED AND DIRECTED BY THE OWNER.
3. BAGS TO BE CEASED WHEN SETTLEMENT WAGES OF SOIL IS NEARLY COMPLETE.

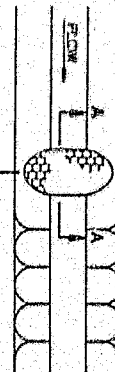


BAGS STAKED IN PLACE WITH 4 FT. WOODEN REINFORCEMENT BARS.



**SECTION A-A**

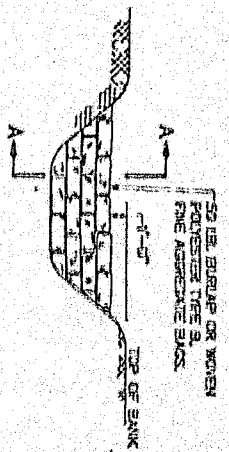
**SECTION B-B**



**PLAN VIEW**

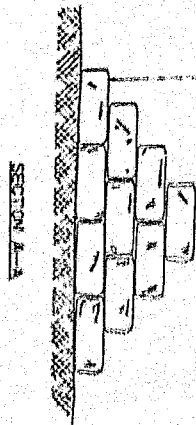
**ROCK FILTER CHECK DAM**

ITEM NO. 9000-0002



**SECTION**

SANDBAGS STAKED IN STAIR STEP SUCCESSIVE ROWS CHESTERS 1/2 BAG TO HEIGHT.

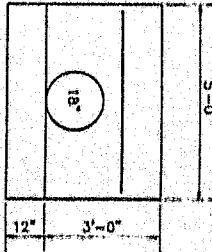


**SECTION A-A**

**TEMPORARY SANDBAG BARRIER**

ITEM NO. 9000-0005

- NOTES**
1. MATERIALS & WORKMANSHIP IN ACCORDANCE WITH SPECIFICATIONS PUBLICATION 408/80. SEE PADDOT STANDARD RC-31, 3/25/84, FOR DIMENSIONS NOT INDICATED.



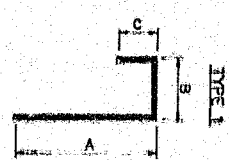
**TYPE D ENDWALL MODIFIED**

STA. 100+00.7 PAR LT.

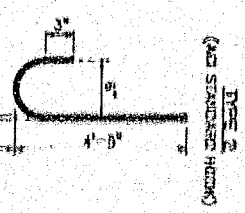
**BAR SCHEDULE - FOR INFORMATION ONLY**

MARK	SIZE	QTY	TYPE	A	B	C	LENGTH
MS01	4	20	SR				5'-5"
MS01	5	6	1	5'-5"	3'-3"	2'-1"	5'-5"
MS02	5	2	1	2'-5"	1'-0"	2'-5"	5'-5"
MS01	6	6	SR				5'-5"
MS01	4	22	SR				5'-5"
MS01	5	8	SR				4'-5"
MS02	5	6	SR				4'-5"
MS01	6	10	SR				5'-5"
MS02	6	10	SR				5'-5"

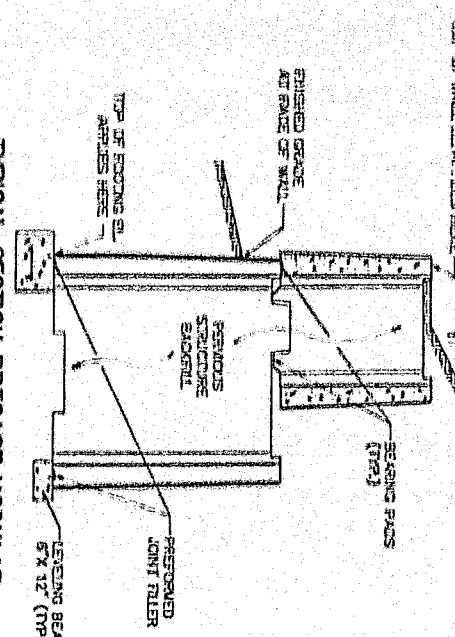
\* CUT IN FIELD AS REQUIRED TO ACCOMMODATE 33" Ø PIPE  
ALL BARS 60 KSI STEEL



**TYPE 1**

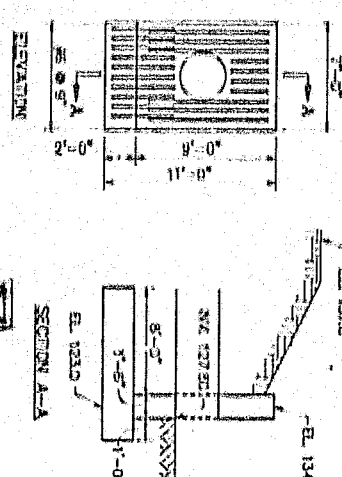


**TYPE 2 (ADD STANDARD HOOK)**

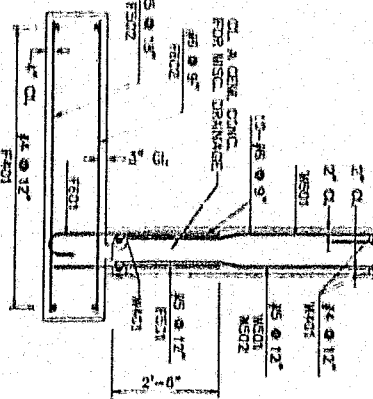


**TYPICAL SECTION PRECAST MODULAR RETAINING WALL SYSTEMS**

ITEM NO. 9000-0001



**SECTION A-A**

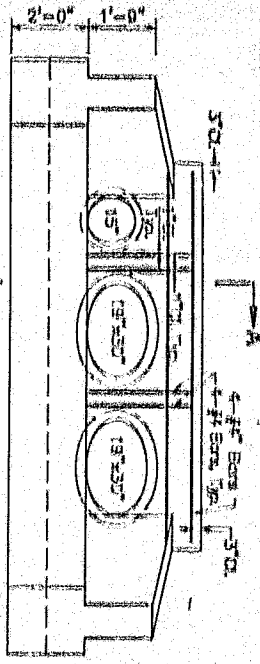
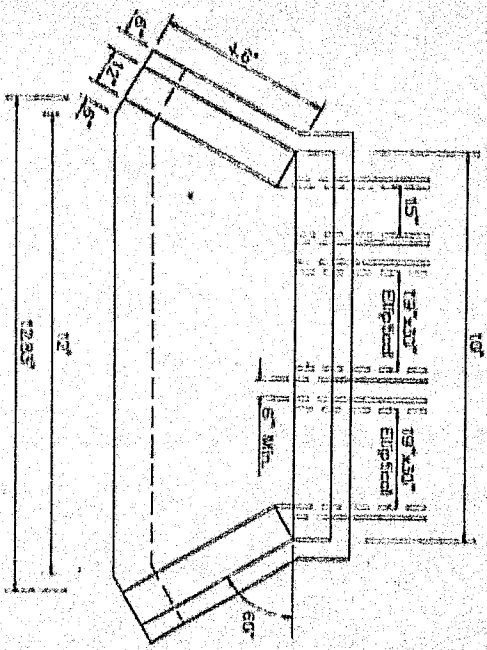


**TYPE D ENDWALL MODIFIED**

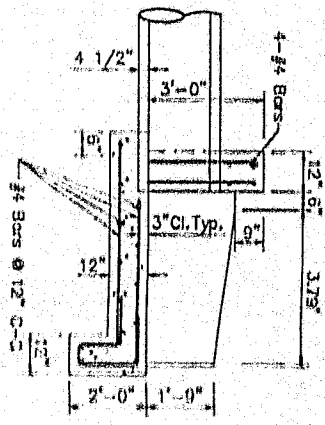
STA. 84+55.81

DISTRICT	COUNTY	ROUTE	SECTION	SHEET
5-3	2025	101	8 OF 27	

PROJECT	DATE	BY
LOWER WALKER TOWNSHIP		

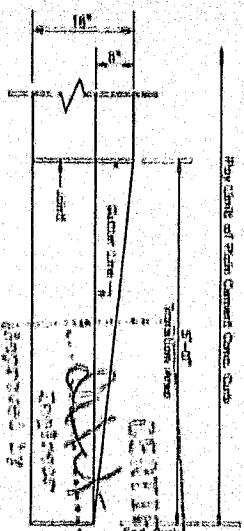


- NOTES:**
1. Materials & Workmanship in accordance with Specifications Publication 408/90. See PADOT Standard RC-3, 3/25/94, for Dimensions not indicated.
  2. For Information Only: Total Reinforcement Bars Approximately 225 Bars



**TYPE D-W ENDWALL, MODIFIED**

Sta. 98+31.00, RL



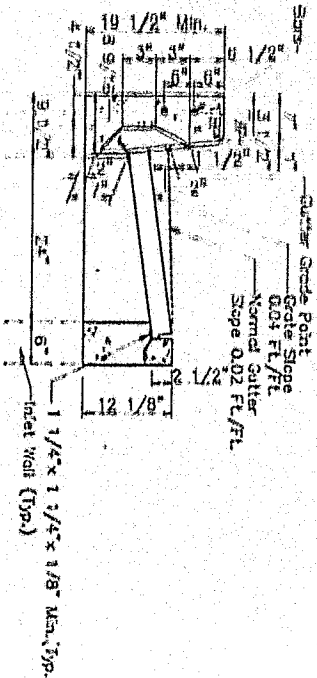
**CERTIFIED CORRECT PLANS**

*Lawrence E. Nixley*  
*Secretary*

**DRIVEWAY ADJUSTMENT SECTION**

5' Depth for STA. 82+49, RL & STA. 82+52, RL

**TYPE C INLET BICYCLE SAFE GRATE SPECIAL**

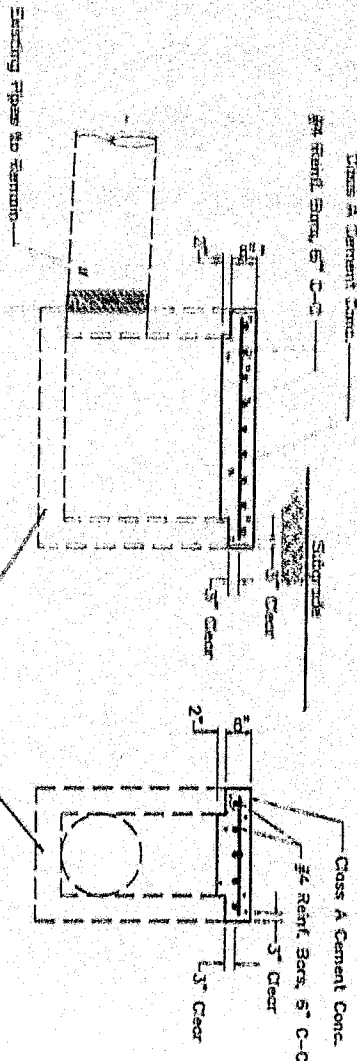


- NOTE:**
1. Downed Type C Inlet Top Units with 2 #8 x 1'-0" Dowel Bars and place 1/2" Perforated Expansion Joint Seal when Connecting to Adjacent Curb Section.
  2. For Reinforcement Bar Detail, See RC-34.
  - 2 of 9, Type C Inlet, Section S-3

**CAP EXISTING INLET**

NEW 9000-0003  
 STA. 76 ± 80, RL  
 STA. 76 ± 80, RL  
 STA. 81 ± 75, RL

- NOTES:**
1. Verify dimensions of existing inlet(s) prior to ordering material.
  2. Construct or install entire slab below subgrade elevation.
  1. C. A. Cem. Conc. & #4 reinf. Bars included in Item 9000-0003.



DISTRICT	COUNTY	ROUTE	SECTION	SHEET
5-0	BLUES	2029	LOT 1	9 OF 27
LOWER WAINFIELD TOWNSHIP				
DATE	BY			

**CURB TRANSITION DETAIL**  
 PUBLIC UTILITY  
 MAY 14, 1995  
 SECRETARY

(Modified Top Unit)  
 INCLUDED IN FIELD 4605-2010  
 IIEA 4605-2011  
 IIEA 4605-2012







TABULATION OF ROADWAY ITEMS

2 OF 2

ITEM NUMBER		UNIT	REMARKS	STATIONS			
0202	DEMOLITION						
0303	CLASS I EXCAVATION						
4203	CLASS IA EXCAVATION, MODIFIED						
4205	FOREIGN BORROW EXCAVATION, MODIFIED						
0305	BITUMINOUS CONCRETE BASE COURSE, 4" DEPTH						
0306	BITUMINOUS CONCRETE BASE COURSE, 6" DEPTH						
0360	SUBBASE 4" DEPTH (NO. 2A)						
0360	SUBBASE 6" DEPTH (NO. 2A)						
0420	BITUMINOUS WEARING COURSE 10-2, 1 1/2" DEPTH, SRL-II						
0420	BITUMINOUS WEARING COURSE 10-2, 2" DEPTH, SRL-II						
0420	BITUMINOUS WEARING COURSE 10-2, 1 1/2" DEPTH, SRL-I						
0420	BITUMINOUS WEARING COURSE 10-2, MANUAL PATCHING, SRL-II						
0420	BITUMINOUS WEARING COURSE 10-2, HPS, 1 1/2" DEPTH, SRL-II						
0421	BITUMINOUS BINDER COURSE 10-2, 2" DEPTH						
0421	BITUMINOUS BINDER COURSE 10-2, HPS, 2" DEPTH						
0421	BITUMINOUS BINDER COURSE 10-2, MANUAL PATCHING						
0460	BITUMINOUS TACK COAT						
0501	PLAIN CEMENT CONCRETE PAVEMENT, 6" DEPTH						
0620	TYPE 2-SC GUIDE RAIL						
0620	TYPE 2 STRONG POST END TREATMENT						
0630	PLAIN CEMENT CONCRETE CURB						
0676	CEMENT CONCRETE SIDEWALK						
0804	SEEDING AND SOIL SUPPLEMENTS - FORMULA L						
0805	MULCHING - WOOD FIBER						
0865	SILT BARRIER FENCE, 18" HEIGHT						
8900	PRECAST MODULAR RETAINING WALL SYSTEMS						
9000	REMOVE FLASHING LIGHTS						
9000	TEMPORARY SAND BAG BARRIER						
9000	TEMPORARY SIGHTING BASIN (20'x20')						
9000	RELOCATE EXISTING LIGHT POST						
9931	RELOCATE EXISTING SIGNS						
<table border="1" style="width: 100%; border-collapse: collapse;"> <tr> <td style="width: 33%;">T-344 (OXFORD VALLEY ROAD)</td> <td style="width: 33%;">T-348 (DOBRY ROAD)</td> <td style="width: 33%;">(OXFORD VALLEY/HEACOCK ROAD)</td> </tr> </table>					T-344 (OXFORD VALLEY ROAD)	T-348 (DOBRY ROAD)	(OXFORD VALLEY/HEACOCK ROAD)
T-344 (OXFORD VALLEY ROAD)	T-348 (DOBRY ROAD)	(OXFORD VALLEY/HEACOCK ROAD)					



DATE	10/23/21
BY	...
PROJECT	...
SCALE	...

CORRECT

UTILITY

TOTAL SHEET 1 OF 2

S.R. 2020

ROUTE

# TABULATION OF DRAINAGE QUANTITIES

1 OF 3

EMBALLMENT (INFORMATION ONLY)		ITEM NUMBER		STATIONS	
0203 0001 C.Y.	CLASS 1 EXCAVATION				
0204 0001 C.Y.	CLASS 2 EXCAVATION				
4204 0001 C.Y.	CLASS 2 EXCAVATION, MODIFIED				
0204 0180 C.Y.	CLASS 4 EXCAVATION				
0212 0001 L.F.	GEOTEXTILE, CLASS 1				
0212 0002 L.F.	GEOTEXTILE, CLASS 2, TYPE A				
0212 0003 L.F.	GEOTEXTILE, CLASS 2, TYPE B				
0601 0021 L.F.	15" REINFORCED CEMENT CONCRETE PIPE CLASS II				
0601 0022 L.F.	18" REINFORCED CEMENT CONCRETE PIPE CLASS II				
0601 0023 L.F.	30" REINFORCED CEMENT CONCRETE PIPE CLASS II				
0601 0024 L.F.	33" REINFORCED CEMENT CONCRETE PIPE CLASS II				
0601 0400 C.Y.	GRAVEL AGGREGATE FOR PIPE TREAT DRAINAGE				
0601 0403 C.Y.	AGGREGATE FOR BEDDING				
0601 0430 C.Y.	CLASS A CEMENT CONCRETE FOR MISCELLANEOUS DRAINAGE				
0602 0002 L.F.	21" x 19" CORRUGATED STEEL PIPE ARCH CULVERT METALLIC COATED, TYPE II, (2 2/3" x 1/2" CORRUGATIONS), 16 GAGE				
0604 0022 L.F.	18" REINFORCED CEMENT CONCRETE PIPE CLASS II (OPEN JOINT)				
0604 0024 L.F.	24" REINFORCED CEMENT CONCRETE PIPE CLASS II (OPEN JOINT)				
0604 0026 L.F.	30" REINFORCED CEMENT CONCRETE PIPE CLASS II (OPEN JOINT)				
0605 2000 EACH	TYPE M INLET				
0606 0050 SET	GRADE ADJUSTMENT OF EXISTING INLETS				
0610 7002 L.F.	6" PAVEMENT BASE DRAIN				
0615 0022 L.F.	8" SUBSURFACE DRAIN OUTLETS				
0626 0030 C.Y.	CORROSION RESISTANT CAGIONS, TYPE B				
0606 0000 SET	EROSION CONTROL AND REVEGETATION MAT				
0650 0023 L.F.	ROCK, CLASS II-B				
4605 2010 EACH	TYPE D INLET, BICYCLE SAFE GRATE, SPECIAL				
4605 2011 EACH	TYPE C INLET, TYPE 1 BOX, BICYCLE SAFE GRATE, SPECIAL				
4605 2012 EACH	TYPE D INLET, TYPE 2 BOX, BICYCLE SAFE GRATE, SPECIAL				
0605 2000 EACH	TYPE D ENDWALL				
4605 2000 EACH	TYPE D ENDWALL, MODIFIED				
4605 2020 EACH	TYPE D-W ENDWALL, MODIFIED				
0600 0001 EACH	INLET PROTECTION				
0600 0002 EACH	ROCK FILTER CHECK DAM				
0600 0013 EACH	WAP EXISTING INLET				
0601 0001 L.F.	10" x 30" HORIZONTAL ELLIPTICAL REINFORCED CEMENT CONCRETE HEAD INLET				



PROJECT	DATE	SCALE	SHEET
NO. 20	2023	1/1"	14 OF 27
OWNER	DESIGNER	DATE	BY
LOWER MERFIELD TOWNSHIP	REVISIONS		

CONTRACT NO. 2023-01  
 PROJECT: LOWER MERFIELD TOWNSHIP  
 DRAWING NO. 2023-01-01  
 DATE: 12/31/2023  
 BY: [Signature]  
 CHECKED: [Signature]  
 APPROVED: [Signature]

# TABULATION OF DRAINAGE QUANTITIES

2 OF 3



PROJECT	6-0
COUNTY	WASHTENAW
ROUTE	2029
SECTION	LOT 1
DATE	15 OF 27
REVISIONS	

EMPAKMENT (INFORMATION ONLY)		REMARKS		STATIONS	
0203	CLASS 1 EXCAVATION				
0204	CLASS 2 EXCAVATION				
4804	CLASS 2 EXCAVATION, MODIFIED				
4804	CLASS 4 EXCAVATION				
0218	GEOTEXTILE, CLASS 1				
0218	GEOTEXTILE, CLASS 2, TYPE A				
0218	GEOTEXTILE, CLASS 2, TYPE B				
0601	18" REINFORCED CEMENT CONCRETE PIPE CLASS II				
0601	18" REINFORCED CEMENT CONCRETE PIPE CLASS II				
0601	30" REINFORCED CEMENT CONCRETE PIPE CLASS II				
0601	33" REINFORCED CEMENT CONCRETE PIPE CLASS II				
0601	COARSE AGGREGATE FOR PIPE TRENCH BACKFILL				
0601	AGGREGATE FOR BEDDING				
0801	CLASS A CEMENT CONCRETE FOR MISCELLANEOUS DRAINAGE				
0602	21" x 15" CORRUGATED STEEL PIPE ARCH CULVERT METALLIC COATED, TYPE II, (2 2/3" x 1/2" CORRUGATIONS), 16 GAGE				
0604	18" REINFORCED CEMENT CONCRETE PIPE CLASS II (OPEN JOINT)				
0604	24" REINFORCED CEMENT CONCRETE PIPE CLASS II (OPEN JOINT)				
0604	30" REINFORCED CEMENT CONCRETE PIPE CLASS II (OPEN JOINT)				
0605	TYPE M INLET				
0606	GRADE ADJUSTMENT OF EXISTING INLETS				
0610	6" PAVEMENT BASE DRAIN				
0616	6" SUBSURFACE DRAIN OUTLETS				
0826	CORROSION RESISTANT GABIONS, TYPE B				
0808	EROSION CONTROL AND REVEGETATION MAT				
0850	ROCK, CLASS R-6				
4605	TYPE O INLET, BICYCLE SAFE GRATE, SPECIAL				
4605	TYPE O INLET, TYPE 1 BOX, BICYCLE SAFE GRATE, SPECIAL				
4605	TYPE O INLET, TYPE 2 BOX, BICYCLE SAFE GRATE, SPECIAL				
0605	TYPE D ENDWALL				
4605	TYPE D ENDWALL, MODIFIED				
4805	TYPE D-W ENDWALL, MODIFIED				
8000	INLET PROTECTION				
8000	ROCK FILTER CHECK DAM				
8000	CAP EXISTING INLET				
8000	18" x 18" HORIZONTAL ELLIPTICAL REINFORCED CEMENT CONCRETE CLASS II-B				
	ITEM NUMBER				
1				87+25 FAR RT. - RT.	
27				87+25 - 88+75 RT.	
120				88+68 - 90+85 LT.	
				88+75 - 90+84 RT.	
14				90+85 - 92+55 LT.	
				91+40 RT.	
				91+60 RT.	
				91+65 LT.	
				91+80 RT.	
24				92+55 - 94+48 LT.	
54				94+48 - 96+50 LT.	
				96+25 RT.	
76				96+30 - 97+50 FAR RT.	
				96+50 LT. - 96+65 RT.	
				96+50 - 98+50 LT.	
				97+65 RT.	
20				98+31 RT. - FAR RT.	
				98+50 LT. - 99+10 LT.	
				99+10 - 99+61 LT.	
				99+61 LT.	
5				98+50 - 99+10 LT.	
5				99+10 - 99+61 LT.	
13				99+61 - 101+20 LT.	
13				101+20 - 102+70 LT.	
13				102+70 - 104+20 LT.	
				104+20 - 108+50 LT.	
				<b>TOTAL</b>	

DATE: 08/20/2024 PROJECT: 6-0

ATTEN: [Signature]

CHECKED BY: [Signature]  
 DATE: 8/20/24  
 PROJECT: 6-0



S.R. 2029  
 P.C. STA. 6346103  
 P.I.C. STA. 6346103

**LIMIT OF WORK**  
 S.R. 2029 (Oxford Valley Rd.)  
 Sta. 150+00 to 150+00  
 Bucks County

**BIG OAK ROAD**  
 S.R. 2024

PAULINE WERNER

**OXFORD VALLEY ROAD**

DEVELOPMENT CORP.

**HARDLEY CORNERS HOMEOWNERS**

**CERTIFIED CORRECT PLANS**

*Robert E. Nield*  
 Engineer

**PUBLIC UTILITY**

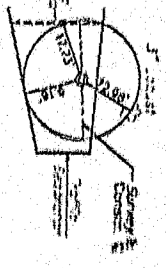
MAY 11 1995

Secretary



DISTRICT	COUNTY	ROUTE	SECTION	SHEET
5-0	BUCKS	2029	100	17 OF 27
5555	LOWER MERIDEN TOWNSHIP			
5555	ANDREWS			

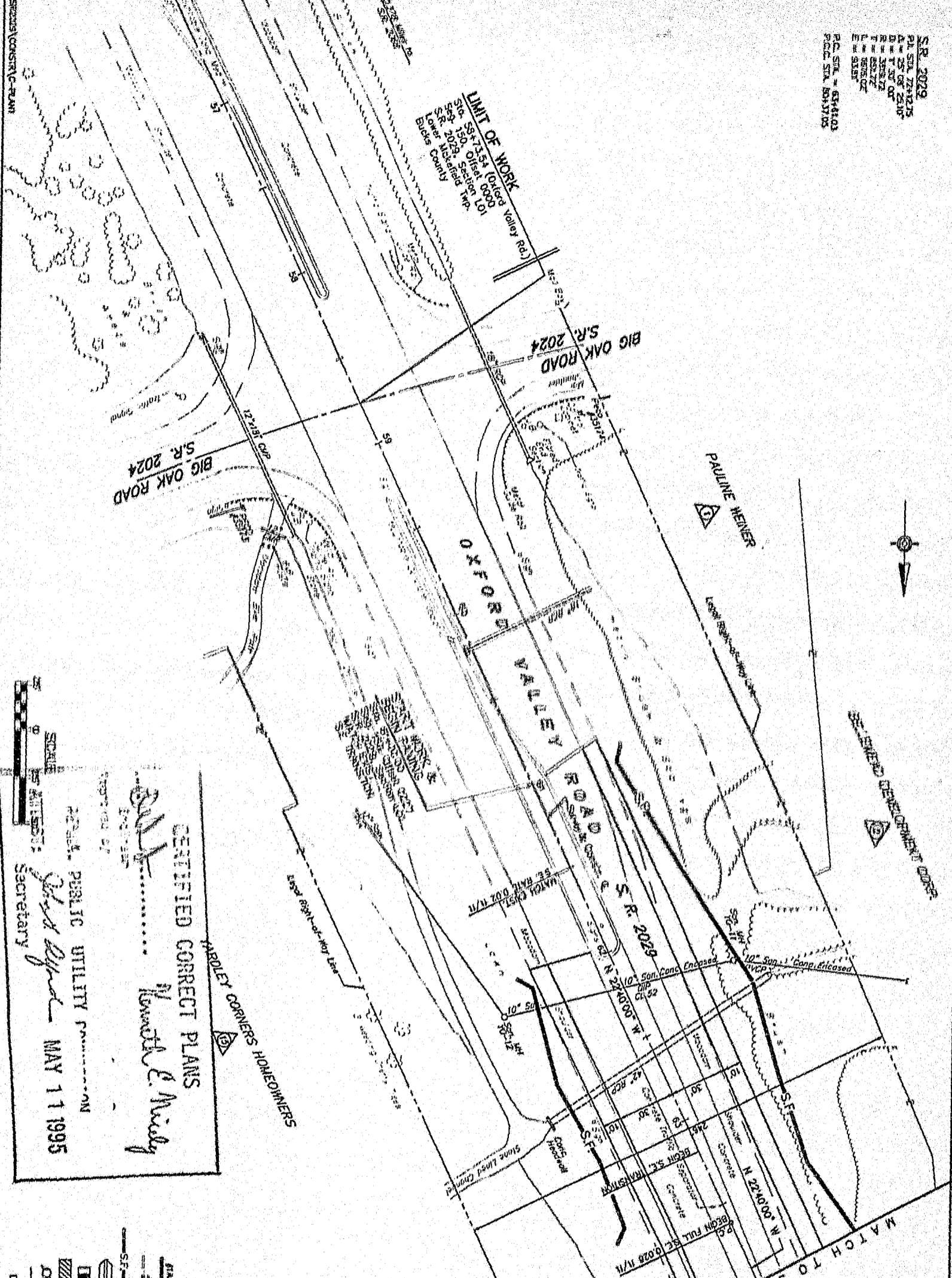
S.R. 2029 (OXFORD VALLEY ROAD)  
 P.C. STA. 6346103



**LEGEND**

- Prop. Inlet and Pipe with Number
- Exist. Inlet and Pipe
- Silt Filter
- Rock Filter
- Soil Protection
- Temporary Sandbag Barrier
- Proposed Utility Pole
- Depressed Curb

MATCH TO SHEET 18 OF 27



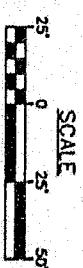
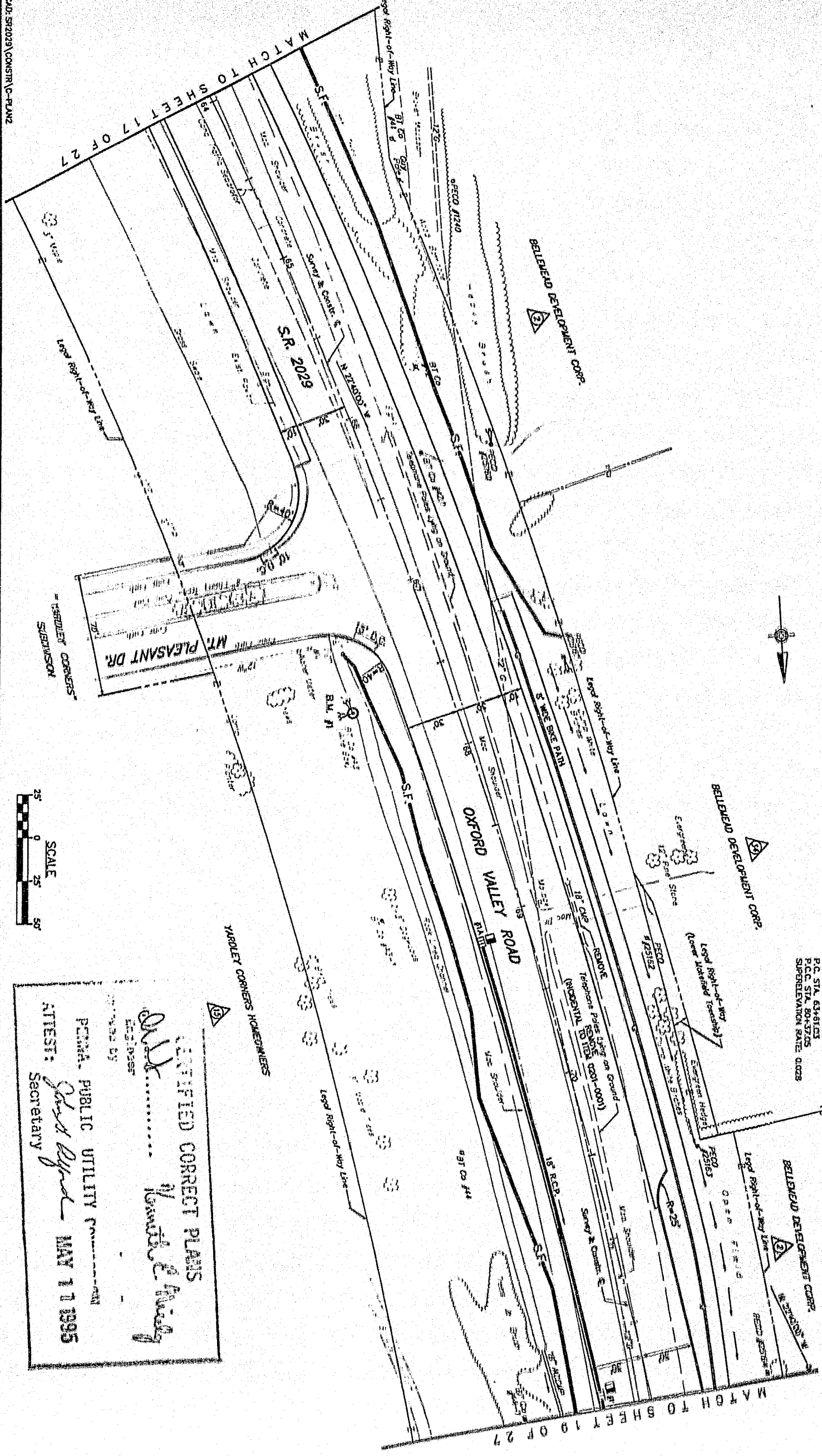
BLVD. AND HWY. 155.04  
 SEE REL. STA. 67+61.00  
 P.K. N.W. 1/4 E.T. CO. POLE #13



SR 2029 - P.K. STA. 74+12.75  
 A = 257025.10'  
 D = 1197.00'  
 R = 1819.27'  
 T = 851.72'  
 L = 451.72'  
 E = 93.81'

P.C. STA. 63+81.53  
 P.T.C. STA. 80+27.05  
 SUPERELEVATION RATE: 0.02%

DATE	BY	REVISION	TOWNSHIP	SECTION	SHEET
6-0		2028	121		18 OF 27
			LOWER WASHINGTON		



**CERTIFIED CORRECT PLANS**

APPROVED BY: *[Signature]*  
 DATE: 5/1/95

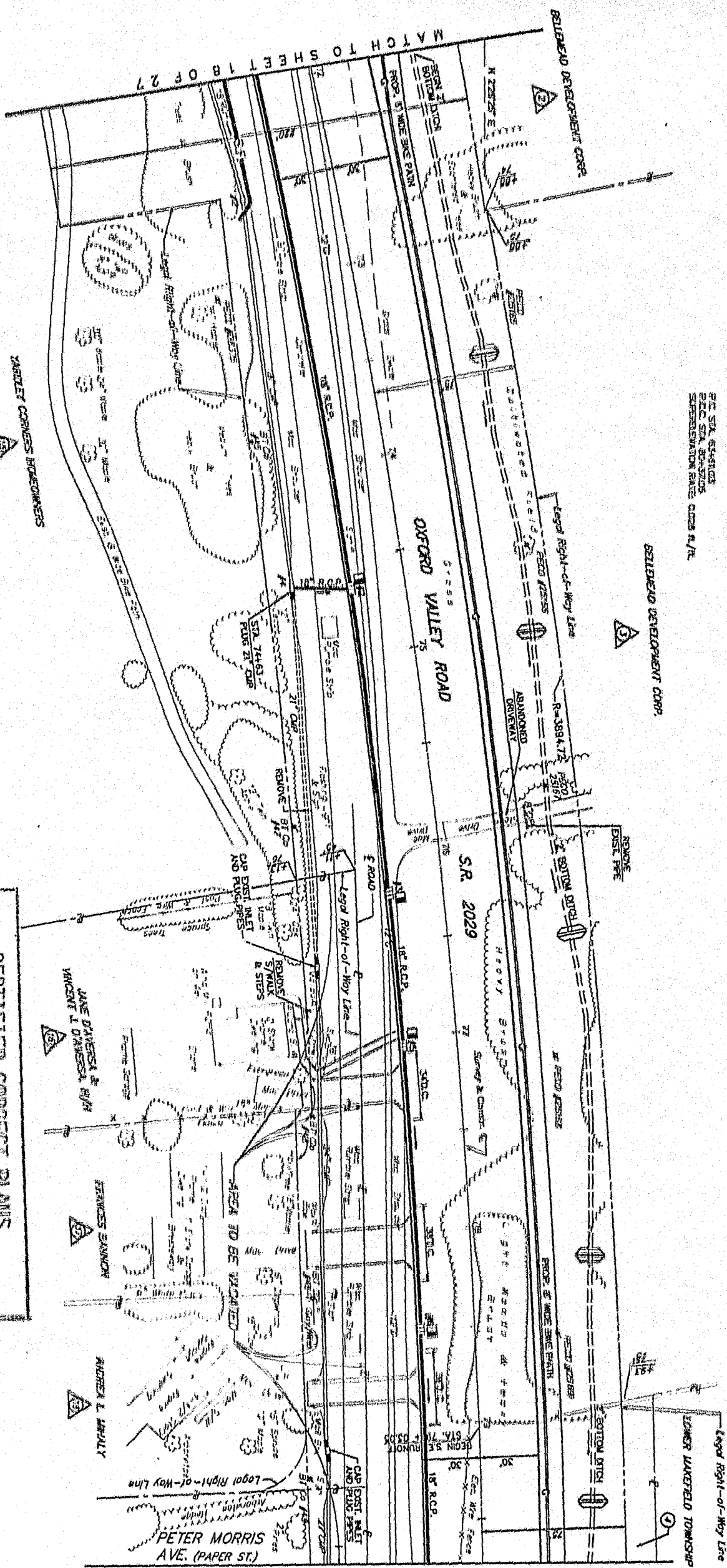
PERMANENT PUBLIC UTILITY COMMISSION

ATTEST: *[Signature]* MAY 1 1995  
 Secretary

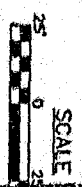
MATCH TO SHEET 18 OF 27

S.R. 2029  
 P.L. STA. 224+22.5  
 4' = 2500/25.4  
 D = 10000  
 R = 3000  
 T = 60.17  
 L = 10000  
 E = 10000  
 P.L. STA. 224+22.5  
 P.L. STA. 224+22.5  
 SUPERSTATION RATE: 1000 FT.

YARDY CORNERS BROWLOWERS  
 YARDY CORNERS  
 SIDEWALK



BELLEVUE DEVELOPMENT CORP.



SCALE

**CERTIFIED CORRECT PLANS**

*Shelly*  
 Engineer

Approved by

PENNA. PUBLIC UTILITY COMMISSION

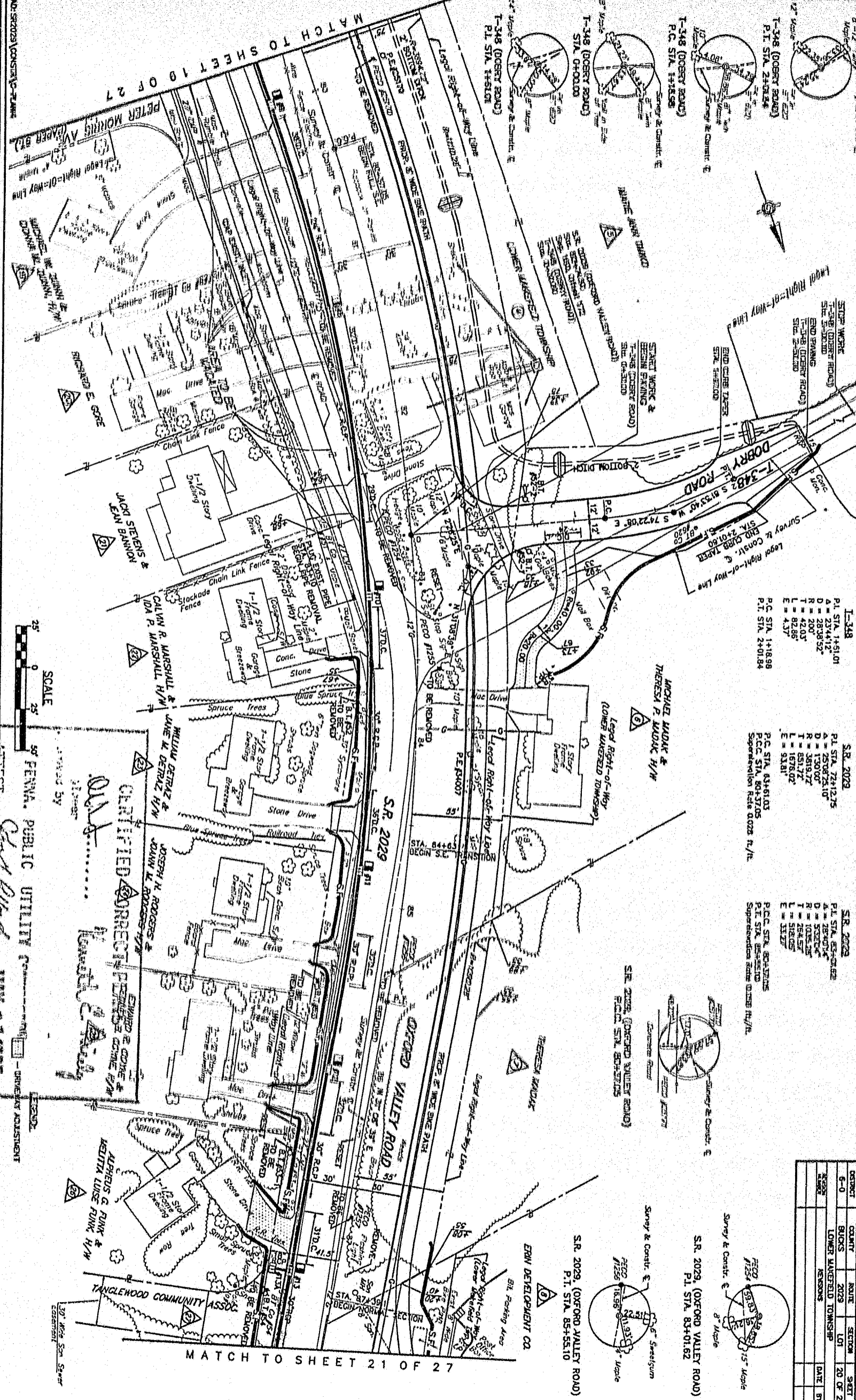
MAY 11 1995

SECRETARY

LEGEND  
 - DRIVEWAY ADJUSTMENT

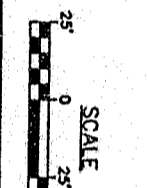
DATE	SCALE	FOUR	SECTION	SHEET
5-10	AS SHOWN	2029	LOT 1	18 OF 27
DATE	BY			

MATCH TO SHEET 20 OF 27

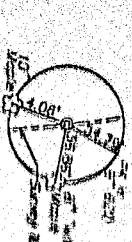


MATCH TO SHEET 19 OF 27

MATCH TO SHEET 21 OF 27



SCALE  
0 25 50  
50' FENNA. PUBLIC UTILITY COMPANY  
CERTIFIED CORRECT PER STATE REQUIREMENTS  
DATE: 02/20/2023  
DRAWN BY: [Signature]  
CHECKED BY: [Signature]



**T-348**

PL STA. 1+51.01	A = 2344.12'
D = 2838.52'	R = 200'
T = 42.03'	L = 82.88'
E = 4.37'	

P.C. STA. 1+18.98  
P.T. STA. 2+01.84

**S.R. 2029**

PL STA. 7242.75	A = 250725.10'
D = 1350.00'	R = 3619.72'
T = 851.72'	L = 1676.02'
E = 93.81'	

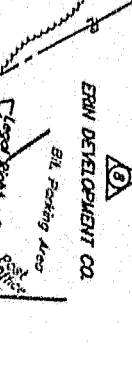
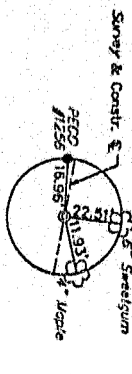
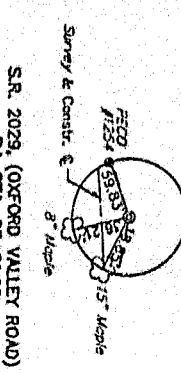
P.C. STA. 6346.03  
P.T. STA. 8043.05  
Superelevation Rate 0.028 ft./ft.

**S.R. 2029**

PL STA. 6346.03	A = 28007.4'
D = 5250.0'	R = 1062.5'
T = 1062.5'	L = 264.57'
E = 31.27'	

P.C.C. STA. 6346.03  
P.T. STA. 6346.03  
Superelevation Rate 0.028 ft./ft.

DISTRICT	COUNTY	ROUTE	SECTION	LOT	SHEET
6-0	BLUES	2029	LOWER WAREFIELD TOWNSHIP	20	OF 27
NO. 1	NO. 1	NO. 1	NO. 1	NO. 1	NO. 1
NO. 2	NO. 2	NO. 2	NO. 2	NO. 2	NO. 2
NO. 3	NO. 3	NO. 3	NO. 3	NO. 3	NO. 3
NO. 4	NO. 4	NO. 4	NO. 4	NO. 4	NO. 4
NO. 5	NO. 5	NO. 5	NO. 5	NO. 5	NO. 5
NO. 6	NO. 6	NO. 6	NO. 6	NO. 6	NO. 6
NO. 7	NO. 7	NO. 7	NO. 7	NO. 7	NO. 7
NO. 8	NO. 8	NO. 8	NO. 8	NO. 8	NO. 8
NO. 9	NO. 9	NO. 9	NO. 9	NO. 9	NO. 9
NO. 10	NO. 10	NO. 10	NO. 10	NO. 10	NO. 10
NO. 11	NO. 11	NO. 11	NO. 11	NO. 11	NO. 11
NO. 12	NO. 12	NO. 12	NO. 12	NO. 12	NO. 12
NO. 13	NO. 13	NO. 13	NO. 13	NO. 13	NO. 13
NO. 14	NO. 14	NO. 14	NO. 14	NO. 14	NO. 14
NO. 15	NO. 15	NO. 15	NO. 15	NO. 15	NO. 15
NO. 16	NO. 16	NO. 16	NO. 16	NO. 16	NO. 16
NO. 17	NO. 17	NO. 17	NO. 17	NO. 17	NO. 17
NO. 18	NO. 18	NO. 18	NO. 18	NO. 18	NO. 18
NO. 19	NO. 19	NO. 19	NO. 19	NO. 19	NO. 19
NO. 20	NO. 20	NO. 20	NO. 20	NO. 20	NO. 20
NO. 21	NO. 21	NO. 21	NO. 21	NO. 21	NO. 21
NO. 22	NO. 22	NO. 22	NO. 22	NO. 22	NO. 22
NO. 23	NO. 23	NO. 23	NO. 23	NO. 23	NO. 23
NO. 24	NO. 24	NO. 24	NO. 24	NO. 24	NO. 24
NO. 25	NO. 25	NO. 25	NO. 25	NO. 25	NO. 25
NO. 26	NO. 26	NO. 26	NO. 26	NO. 26	NO. 26
NO. 27	NO. 27	NO. 27	NO. 27	NO. 27	NO. 27
NO. 28	NO. 28	NO. 28	NO. 28	NO. 28	NO. 28
NO. 29	NO. 29	NO. 29	NO. 29	NO. 29	NO. 29
NO. 30	NO. 30	NO. 30	NO. 30	NO. 30	NO. 30
NO. 31	NO. 31	NO. 31	NO. 31	NO. 31	NO. 31
NO. 32	NO. 32	NO. 32	NO. 32	NO. 32	NO. 32
NO. 33	NO. 33	NO. 33	NO. 33	NO. 33	NO. 33
NO. 34	NO. 34	NO. 34	NO. 34	NO. 34	NO. 34
NO. 35	NO. 35	NO. 35	NO. 35	NO. 35	NO. 35
NO. 36	NO. 36	NO. 36	NO. 36	NO. 36	NO. 36
NO. 37	NO. 37	NO. 37	NO. 37	NO. 37	NO. 37
NO. 38	NO. 38	NO. 38	NO. 38	NO. 38	NO. 38
NO. 39	NO. 39	NO. 39	NO. 39	NO. 39	NO. 39
NO. 40	NO. 40	NO. 40	NO. 40	NO. 40	NO. 40
NO. 41	NO. 41	NO. 41	NO. 41	NO. 41	NO. 41
NO. 42	NO. 42	NO. 42	NO. 42	NO. 42	NO. 42
NO. 43	NO. 43	NO. 43	NO. 43	NO. 43	NO. 43
NO. 44	NO. 44	NO. 44	NO. 44	NO. 44	NO. 44
NO. 45	NO. 45	NO. 45	NO. 45	NO. 45	NO. 45
NO. 46	NO. 46	NO. 46	NO. 46	NO. 46	NO. 46
NO. 47	NO. 47	NO. 47	NO. 47	NO. 47	NO. 47
NO. 48	NO. 48	NO. 48	NO. 48	NO. 48	NO. 48
NO. 49	NO. 49	NO. 49	NO. 49	NO. 49	NO. 49
NO. 50	NO. 50	NO. 50	NO. 50	NO. 50	NO. 50

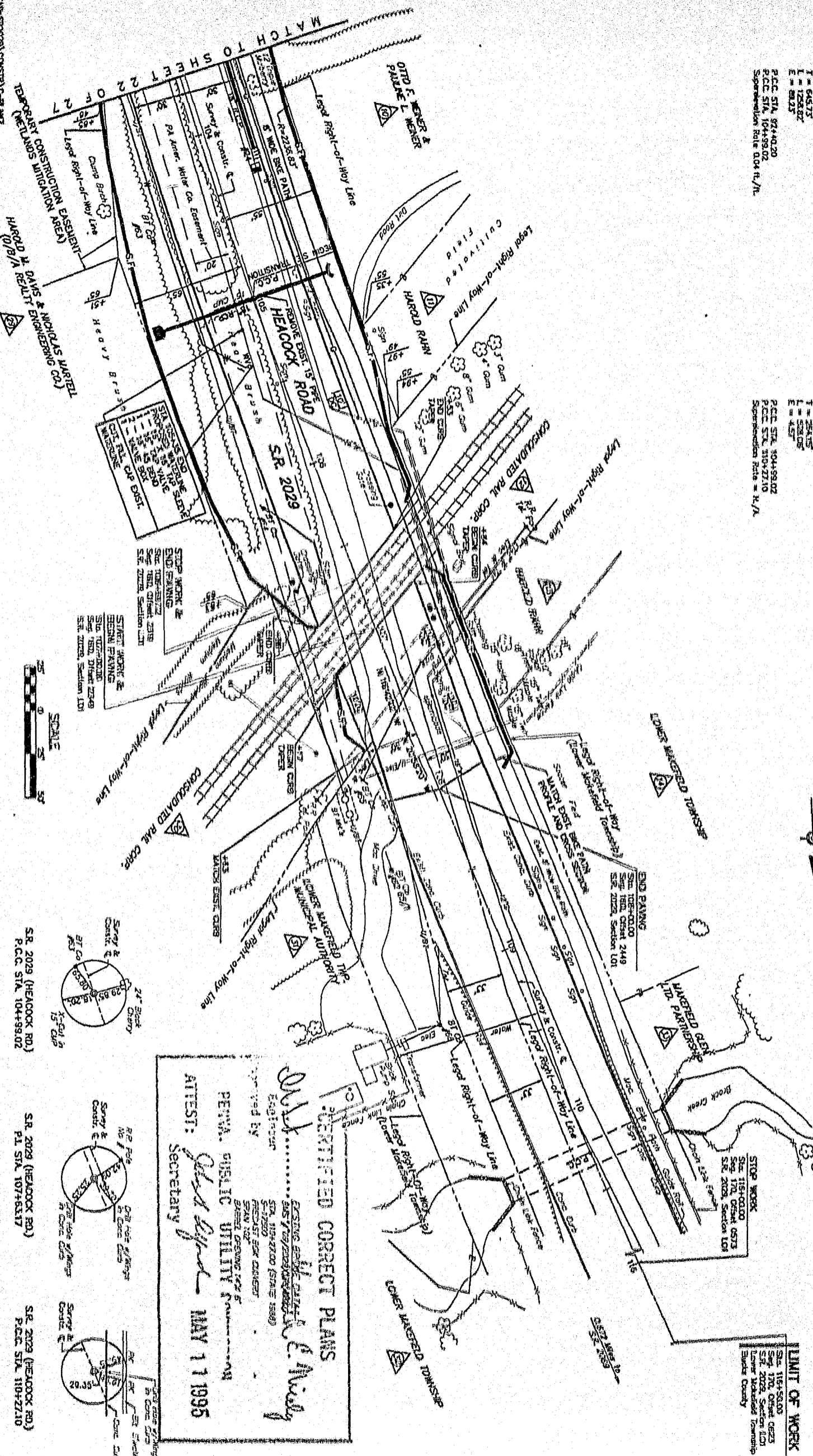






S.R. 2029  
 P.L. STA. 94+83.37  
 A = 312814  
 D = 230700  
 R = 229183  
 T = 64617  
 L = 128482  
 E = 81217  
 P.C.C. STA. 92+40.20  
 P.C.C. STA. 104+99.02  
 Superelevation Rate = 0.04 ft./ft.

S.R. 2029  
 P.L. STA. 107+63.17  
 A = 337322  
 D = 628207  
 R = 229183  
 T = 25415  
 L = 52108  
 E = 437  
 P.C.C. STA. 90+49.02  
 P.C.C. STA. 110+27.10  
 Superelevation Rate = 0.04 ft./ft.

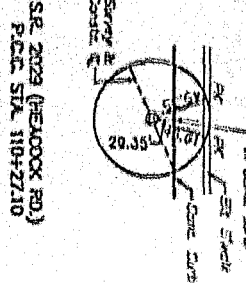
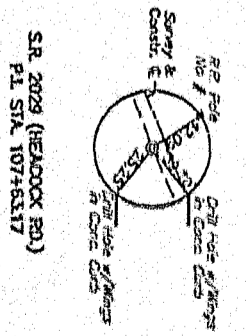
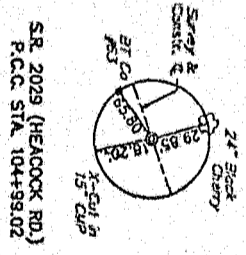


**NOTE:**  
 ALL RAILROAD CROSSING SIGNS AND RELATED UTILITIES TO BE RELOCATED BY OTHERS. CONSISTENT WITH P.L.C. COMPLAINT DOCKET NO. A-00110138.

NO.	DATE	BY	REVISIONS

**LIMIT OF WORK**  
 Sta. 115+58.00  
 Sta. 120, Offset 0623  
 S.R. 2029, Section 101  
 Lower Waverfield Township  
 Bluffs County

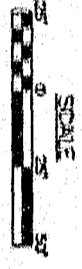
**CERTIFIED CORRECT PLANS**  
 I, *John E. Nixley*  
 PEWA. PUBLIC UTILITY ENGINEER  
 ATTEST: *John E. Nixley*  
 SECRETARY  
 MAY 11 1995



S.R. 2029 (HEACOCK RD.)  
 P.C.C. STA. 104+99.02

S.R. 2029 (HEACOCK RD.)  
 P.L. STA. 107+63.17

S.R. 2029 (HEACOCK RD.)  
 P.C.C. STA. 110+27.10

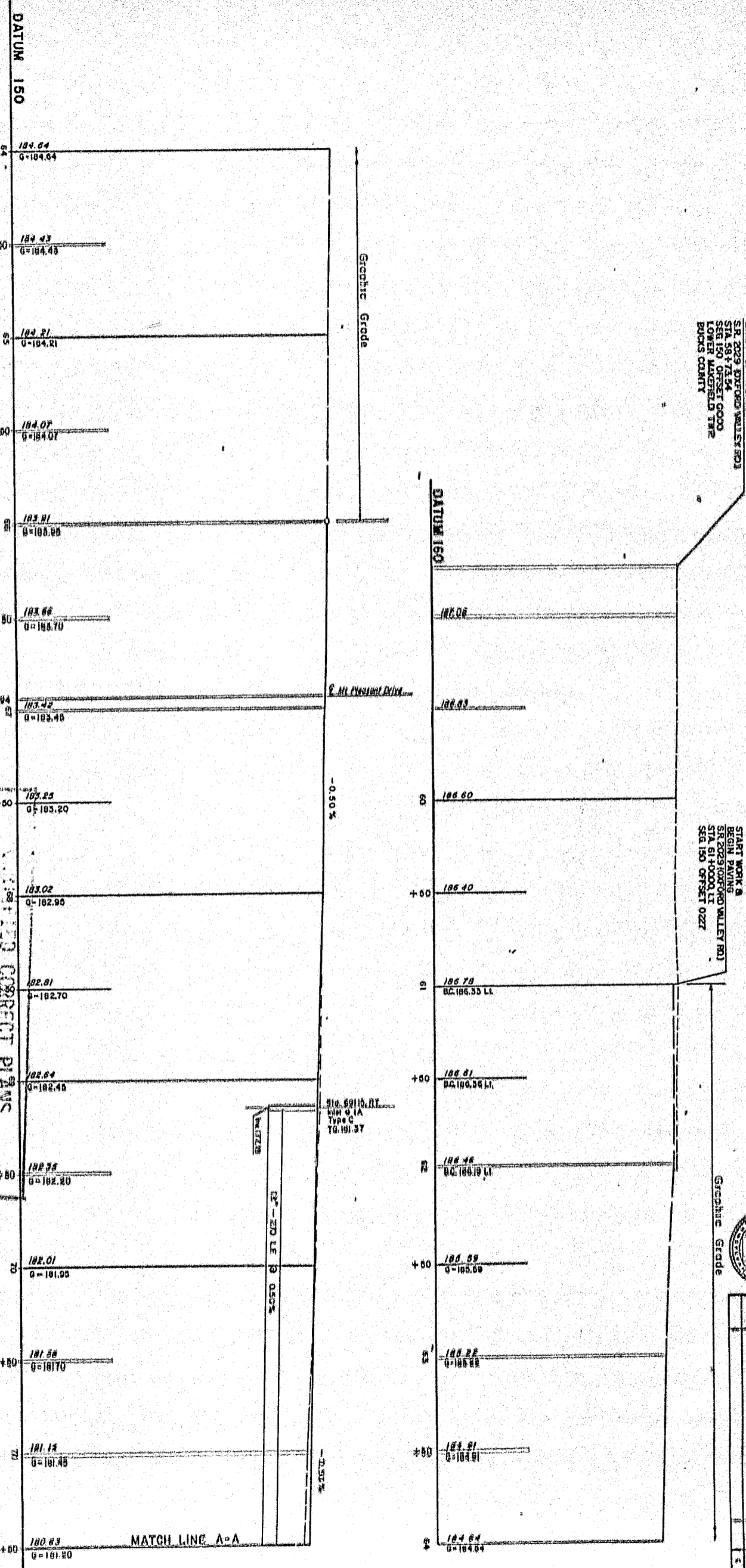


LIMIT OF WORK  
 SR 229 (FORMER WALLEY RD)  
 STA 58+72.54  
 STA 150 OFFSET 6000  
 LOWER MARKETFIELD TWP  
 BUTLER COUNTY

START WORK @  
 BEGIN PAVING  
 SR 229 (FORMER WALLEY RD)  
 STA 61+00.00  
 STA 150 OFFSET 0227



NO.	DATE	REVISION
1	2008	24-08-27
2	2008	24-08-27
3	2008	24-08-27
4	2008	24-08-27
5	2008	24-08-27
6	2008	24-08-27
7	2008	24-08-27
8	2008	24-08-27
9	2008	24-08-27
10	2008	24-08-27



DATUM 150

184.64  
G=184.64

184.43  
G=184.43

184.21  
G=184.21

184.07  
G=184.07

183.91  
G=183.91

183.76  
G=183.76

183.42  
G=183.42

183.25  
G=183.20

183.02  
G=182.98

182.81  
G=182.70

182.64  
G=182.58

182.58  
G=182.50

182.01  
G=181.88

181.88  
G=181.70

181.44  
G=181.48

180.83  
G=181.20

Graphic Grade

P. M. Paved Drive

-0.50%

12" x 20" LE 9 0.50%

2.50%

MATCH LINE A-A

PLAN, PAVEMENT UTILITY PROVISIONS

ATTEST: *[Signature]* MAY 11 1995

Secretary

ON *[Signature]*

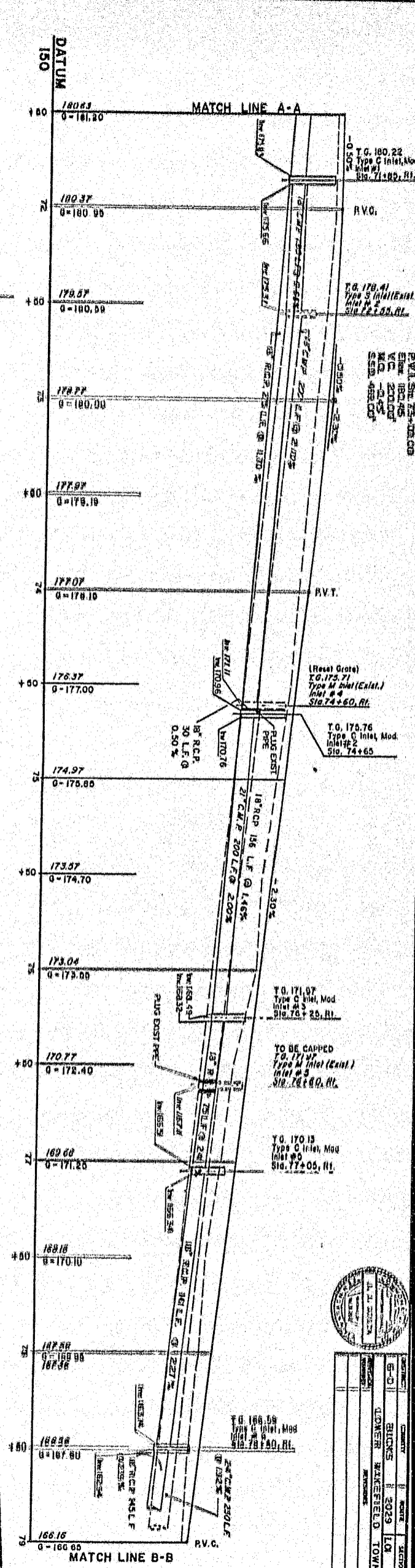
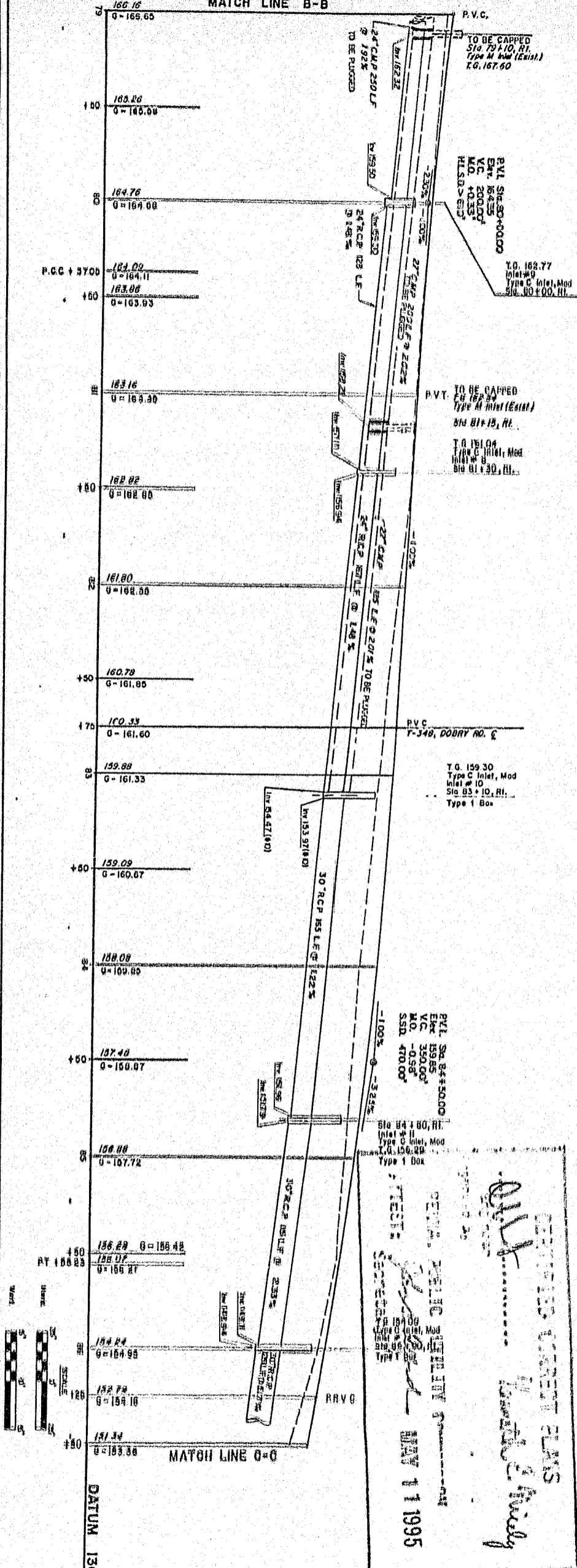
FOR CORRECT PLANS

*[Signature]*

SCALE

Horizontal: 1" = 40'

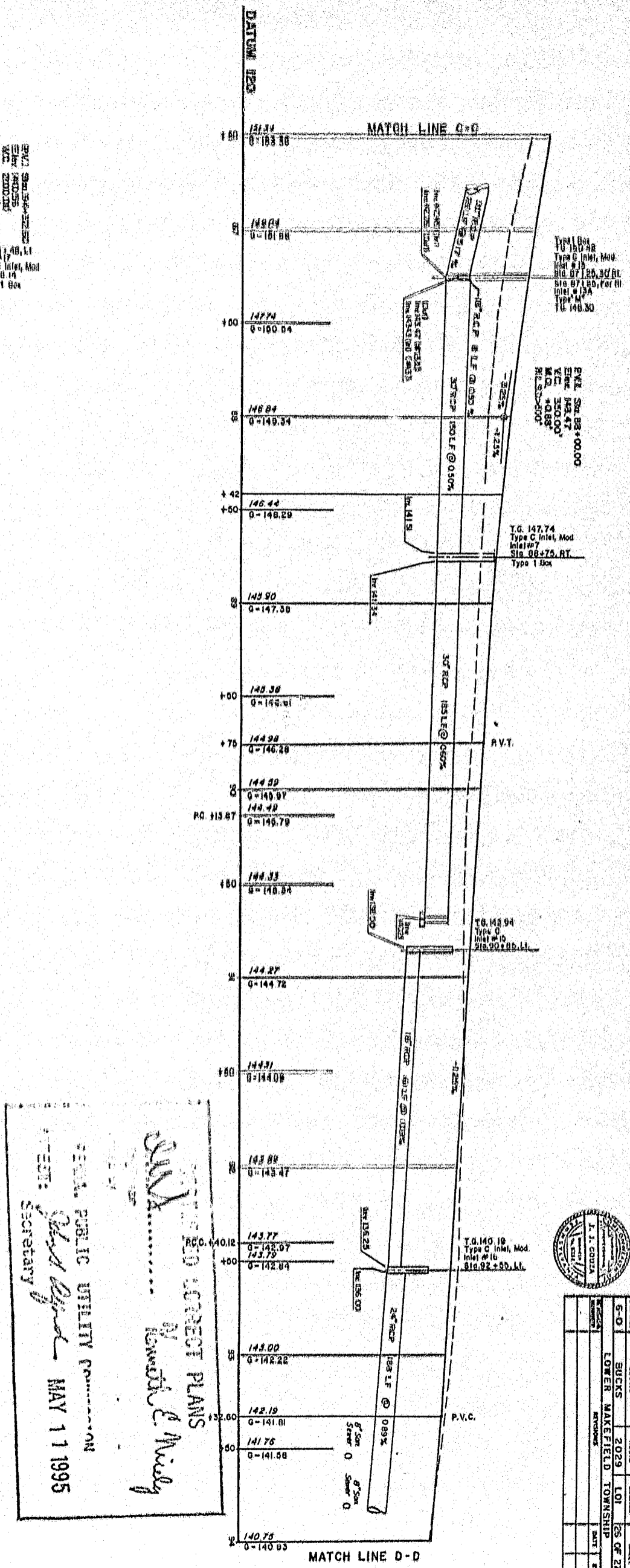
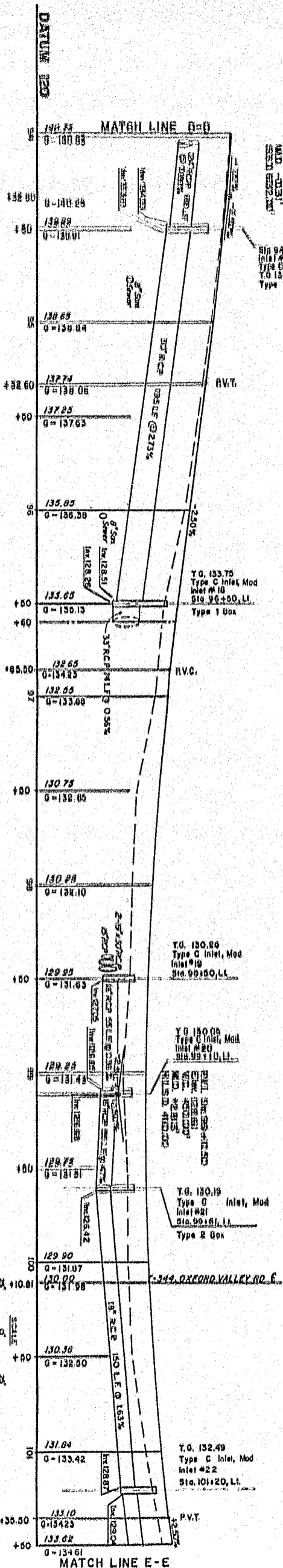
Vertical: 1" = 4'



*Handwritten signature and notes:*  
 11 1995  
 [Signature]



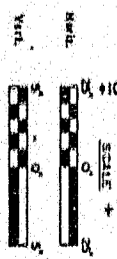
PROJECT NO.	2029
DATE	10/25/97
TOWNSHIP	WILSON TOWNSHIP
SHEET NO.	25 OF 27



PUBLIC UTILITY CORPORATION  
 SECRETARY  
 MAY 1 1995  
 L. J. CORTELLA  
 ENGINEER



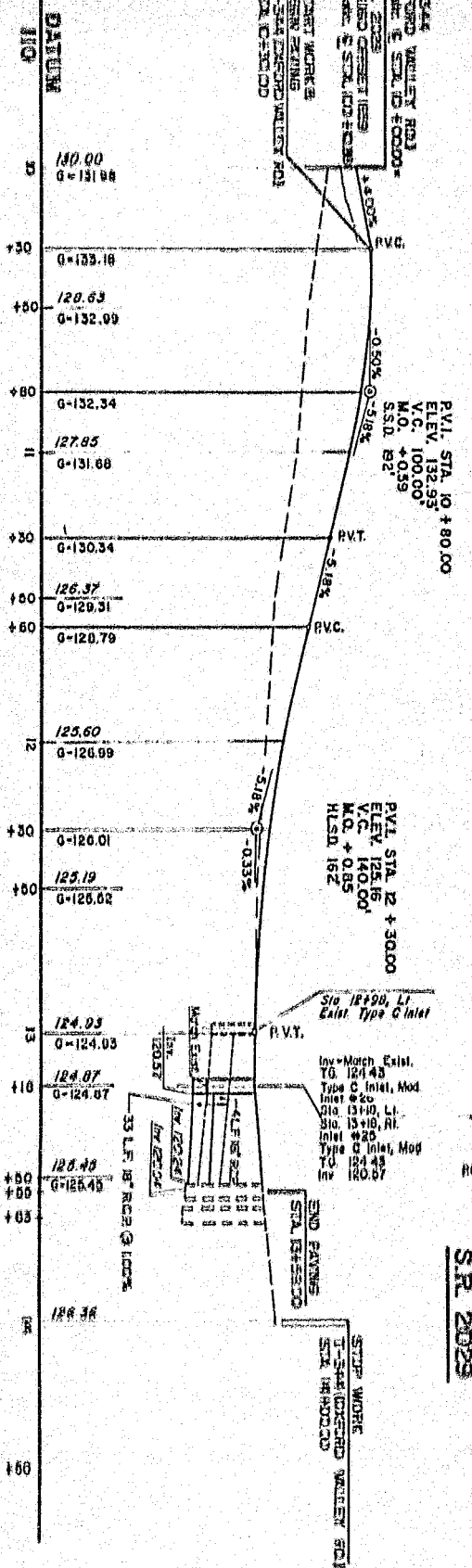
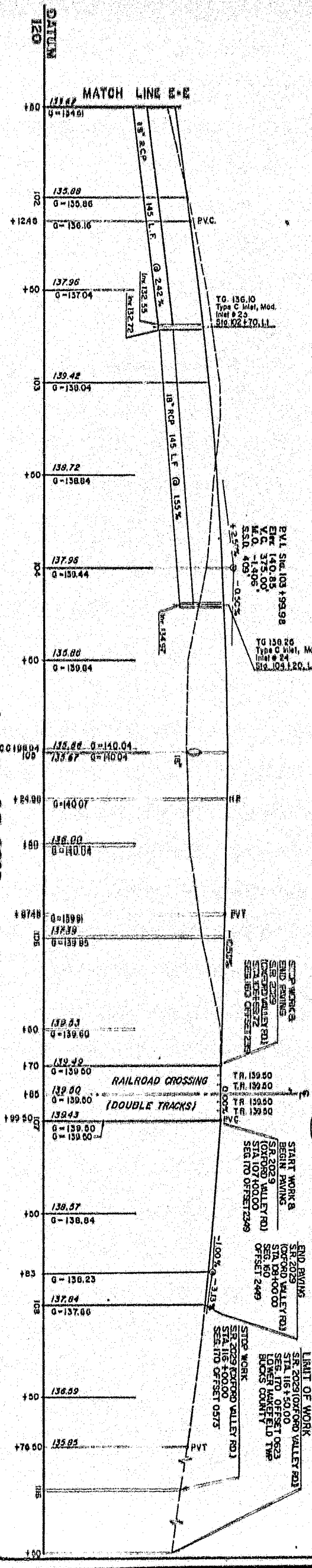
NO.	DATE	DESCRIPTION	BY
5-0	2029	LOWER MAKE FIELD TOWNSHIP	LOJ
			25 OF 27



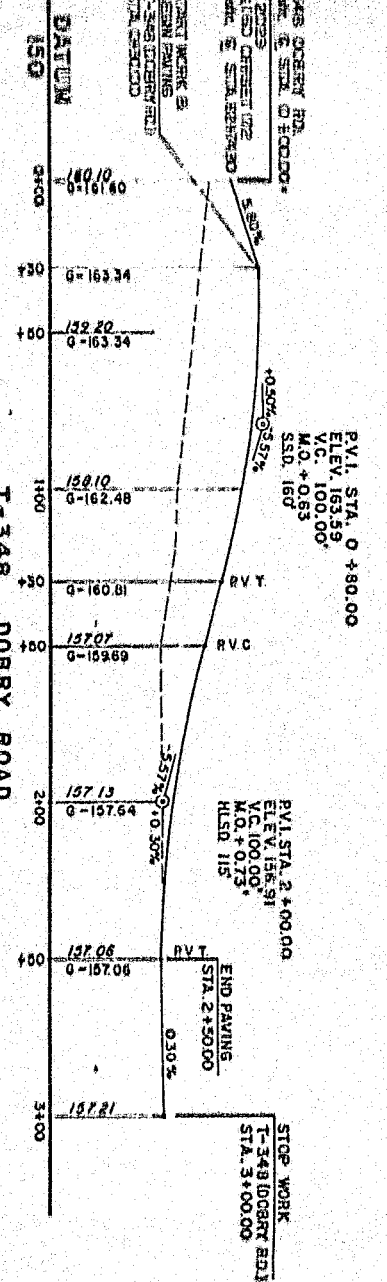


P.V.L. Sta. D7+88.00  
 Elev. 138.62  
 V.C. 176.00  
 M.O. +0.44  
 S.S.D. 430

TRACT	COUNTY	ROUTE	SECTION	SHEET
6-0	BUCKS	2029	108	27 OF 27
LOWER MAKEFIELD TOWNSHIP				
STEP 3 - RESURFACING				



**T-344 OXFORD VALLEY ROAD**



**CERTIFIED CORRECT PLANS**  
 I hereby certify that the above is a true and correct copy of the original plans as filed in my office.  
 J. J. GAZDA  
 Professional Engineer  
 No. 10000  
 State of Ohio

TEST: *Franklyn*  
 Secretary

NEWA. PUBLIC UTILITY COMMISSION  
 MAY 11 1995





TRAFFIC SIGNAL SUPPORTS

ITEM NUMBER	STRUCT. NO.	ROUTE	STATION SIDE	OFFSET	H	K	MOUNTING								
							M	N	O	P	R				
0951-0120															
0951-0130															
0951-0135															
0951-0140															
0951-0145															
0951-0150															
0951-0155															
TOTALS															

TRENCH, CONDUIT, JUNCTION BOX, ELECTRICAL ITEMS

DESCRIPTION	ITEM NUMBER	UNIT	ENTIRE PROJECT
1 INCH CONDUIT	0954 0011 L.F.	760	760
2 INCH CONDUIT	0954 0012 L.F.	135	135
5 INCH CONDUIT	0954 0015 L.F.		
7 INCH CONDUIT	0954 0017 L.F.		
TRENCH AND BACKFILL, TYPE I	0954 0118 L.F.	700	700
TRENCH AND BACKFILL, TYPE III	0954 0153 L.F.	60	60
TRENCH AND BACKFILL, TYPE IV	0954 0154 L.F.		
SIGNAL CABLE 14 AWG - 3 CONDUCTOR	0954 0201 L.F.	194	194
SIGNAL CABLE 14 AWG - 6 CONDUCTOR	0954 0202 L.F.	633	633
SIGNAL CABLE 14 AWG - 7 CONDUCTOR	0954 0203 L.F.	400	400
JUNCTION BOX JB # 26	0954 0301 EACH	7	7
JUNCTION BOX JB # 27	0954 0302 EACH	2	2
ELECTRICAL SERVICE TYPE U	0954 0402 EACH		
DETECTION LEAD IN CABLE	0956 0001 L.F.		

① POLE LOCATION AND OFFSETS, AS SHOWN, ARE APPROXIMATE.  
 ② MOUNTING HOOKS TO BE DETERMINED DURING CONSTRUCTION.  
 ③ SUPPORT LOCUS AS SHOWN ON PLAN.

MISCELLANEOUS

ITEM NO.	QUANTITY	DESCRIPTION	LOCATION
0955-0303	3	VEHICULAR SIGNAL HEAD, THREE 8" SECTIONS	POLE 24, 6
0955-1205	1	VEHICULAR SIGNAL HEAD, FIVE 12" SECTIONS	POLE 1
0956-0500	2	PEDESTRIAN PUSH BUTTON	POLE 1, 4

FLAT SHEET ALUMINUM SIGN TABULATION

SYMBOL	SERIES	SIZE	AREA EACH SQ. FT.	REMARKS	POST MOUNTED	POLE MOUNTED	POST MOUNT. TYPE B	STRUCTURE TYPE D
A	R3-TL	30"X30"	6.25	LEFT LANE MUST TURN LEFT SIGN	2	2	12.50	
B	R3-TR	30"X30"	6.25	RIGHT LANE MUST TURN RIGHT SIGN	2	2	12.50	
C	R10-RL	24"X30"	5.00	STOP HERE ON RED SIGN	1	1	6.25	
D	R9-S	18"X18"	2.25	NO PEDESTRIAN CROSSING SIGN	1	1	2.25	
E	WG-3	36"X36"	9.00	SIGNAL AHEAD SIGN	2	2	18.00	
F	W6-10	18"X18"	2.25	HAZARD MARKER SIGN	1	1	2.25	
G	R3-SL	30"X36"	7.50	LEFT TURN SIGN	3	3	15.00	
H	R3-SR	30"X36"	7.50	STRAIGHT THROUGH SIGN	2	2	15.00	
J	R3-SR	30"X36"	7.50	RIGHT TURN SIGN	1	1	7.50	
K	R10-RL	24"X30"	5.00	PUSH BUTTON FOR GREEN LIGHT SIGN	1	1		
L	R10-SR	24"X30"	5.00	PUSH BUTTON FOR GREEN LIGHT SIGN	1	1		
TOTALS					9	9	517.50	30.00

\* SIGNS INCIDENTAL TO ITEM 0956-0500, PEDESTRIAN PUSH BUTTON



DETECTORS

SENSOR NUMBER	LAYOUT	OPERATION	DIMENSIONS	TYPE	DATE
1	I	PRESENCE	5'x4'	18"	*
2	I	PULSE	6'x5'	18"	*
3	I	PULSE	6'x5'	18"	*
4	I	PRESENCE	6'x7'	18"	*
5	I	PRESENCE	6'x7'	18"	*
6	I	PRESENCE	6'x7'	18"	*
7	I	PRESENCE	6'x7'	18"	*
8	I	PRESENCE	6'x7'	18"	*
9	I	PULSE	6'x7'	18"	*
10	I	PULSE	6'x7'	18"	*
11	I	PULSE	6'x7'	18"	*
12	EXISTING				
13	EXISTING				

TOTAL LENGTH OF WIRE AND NUMBER OF AMPLIFIERS: 140 2

CERTIFIED PROFESSIONAL ENGINEER PENNA.

Approved by: *[Signature]*  
 Engineer  
 PENNA. PUBLIC UTILITY ENGINEERS  
 ATTEST: *[Signature]* MAY 11 1995  
 Secretary

COUNTY: BUCKS COUNTY  
 MUNICIPALITY: LOWER MERFIELD TOWNSHIP  
 INTERSECTION: SR 2029 (DUNFORD VALLEY RD.)  
 YELLOW FORD DRIVE & RT/BLVD MARKED QUARIES

REVIEWED: *[Signature]*  
 MUNICIPAL OFFICIAL: *[Signature]*  
 RECOMMENDED: *[Signature]*  
 DISTRICT TRAFFIC ENGINEER: *[Signature]*



TRAFFIC SIGNAL SUPPORTS

STRUCT. NO.	ITEM NUMBER	ROUTE	STATION	SIDE	K	ARM 'A'		ARM 'B'		SHAFT DESIGN TENSION	SPAN STRUCT.	SIGNAL POLE		ARM 'C'	SHAFT	ARM 'D'	
						Y	L	X	Z			H	K				
0951-010	1	SR 2029	30+50	E	1	Y	L	X	Z	H	K	Y	L	X	Z	H	K
0951-010	2	SR 2029	30+50	E	1	Y	L	X	Z	H	K	Y	L	X	Z	H	K
0951-010	3	SR 2029	30+50	E	1	Y	L	X	Z	H	K	Y	L	X	Z	H	K
0951-010	4	SR 2029	30+50	E	1	Y	L	X	Z	H	K	Y	L	X	Z	H	K
0951-010	5	SR 2029	30+50	E	1	Y	L	X	Z	H	K	Y	L	X	Z	H	K
TOTALS	1	2	3														

POLE LOCATION AND ARM AS SHOWN ARE APPROXIMATE. ACTUAL POLE LOCATION TO BE DETERMINED DURING CONSTRUCTION.

WASI ARMS TO BE DESIGNED BY MANUFACTURER TO ACCURATELY SUPPORT LOADS AS SHOWN ON PLAN.

STRAIN POLE TO BE DESIGNED BY MANUFACTURER TO ACCURATELY SUPPORT LOADS AS SHOWN ON THE PLAN.

TRENCH, CONDUIT, JUNCTION BOX, ELECTRICAL ITEMS

DESCRIPTION	ITEM NUMBER	QUANTITY	UNIT	LOCATION
1 INCH CONDUIT	0954 001	40	LF	ARM 1 TO ARM 2
2 INCH CONDUIT	0954 002	70	LF	ARM 1 TO ARM 2
3 INCH CONDUIT	0954 003	12	LF	ARM 1 TO ARM 2
TRENCH AND BACKFILL, TYPE I	0954 004	12	LF	ARM 1 TO ARM 2
TRENCH AND BACKFILL, TYPE III	0954 005	38	LF	ARM 1 TO ARM 2
TRENCH AND BACKFILL, TYPE IV	0954 006	38	LF	ARM 1 TO ARM 2
SIGNAL CABLE 14 AWG 3 CONDUCTOR	0954 007	1	LF	ARM 2 TO ARM 3
SIGNAL CABLE 14 AWG 6 CONDUCTOR	0954 008	1	LF	ARM 2 TO ARM 3
JUNCTION BOX 20	0954 009	1	EACH	ARM 2 TO ARM 3
JUNCTION BOX 27	0954 010	1	EACH	ARM 2 TO ARM 3
ELECTRICAL SERVICE TYPE D	0954 011	1	EACH	ARM 2 TO ARM 3
DETECTOR LEAD IN CABLE	0954 012	1	LF	ARM 2 TO ARM 3
ENTIRE PROJECT		1,768	LF	

MISCELLANEOUS

ITEM NO.	QUANTITY	UNIT	DESCRIPTION	LOCATION
0952-2034	1	EACH	CONTROLLER ASSEMBLY, SOLID STATE, ACTUATED WITH VOLUME DENSITY, 2-4 PHASE, TYPE I MOUNTING WITH TIME BASED COORDINATOR	POLE 1
0952-0903	2	EACH	VEHICULAR SIGNAL HEAD, THREE 8" SECTIONS	POLE 2
0955-1203	6	EACH	VEHICULAR SIGNAL HEAD, THREE 12" SECTIONS	POLES 1, 2, 4, 5
0956-0500	2	EACH	PEDESTRIAN PUSH BUTTON	POLE 1, 2

FLAT SHEET ALUMINUM SIGN TABULATION

SYMBOL	SERIES	SIZE	AREA EACH SQ. FT.	REMARKS	POST MOUNTED	POLE MOUNTED	STRUCTURE TYPE
A	R3-7L	30"x30"	6.25	LEFT LANE MUST TURN LEFT SIGN	2	2	2-25
B	R3-7R	30"x30"	6.25	RIGHT LANE MUST TURN RIGHT SIGN	2	2	2-25
D	R3-3	18"x18"	2.25	NO PEDESTRIAN CROSSING SIGN	2	2	2-25
K	R10-3L	9"x12"	0.75	PUSH BUTTON FOR GREEN LIGHT SIGN	1	1	2-25
L	R10-3R	9"x12"	0.75	PUSH BUTTON FOR GREEN LIGHT SIGN	1	1	2-25
M	W1-7	45"x24"	8.00	LARGE DOUBLE ARROW SIGN	1	1	8-00
TOTALS					5	5	2-25

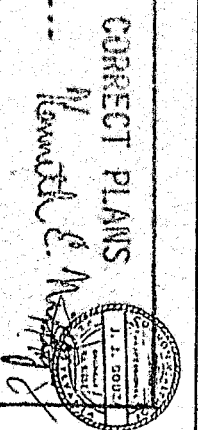
DETECTORS

SENSOR NUMBER	LAYOUT	OPERATION	DIMENSIONS	LOOP SENSOR L.F.	LOOP AMP EACH
1	II	PULSE	6'x6'	60	1
2	II	PULSE	6'x6'	40	1
3	II	PRESENCE	6'x40'	155	1
4	II	PRESENCE	8'x40'	243	1
5	II	PULSE	6'x6'	50	1
6	II	PULSE	6'x6'	40	1
TOTAL LENGTH OF WIRE AND NUMBER OF AMPLIFIERS				588	3

UTILITY CONNECTION

SECRETARY

MAY 11 1995



COUNTY: \_\_\_\_\_ BUCKS

MUNICIPALITY: LOWER MAKEFIELD TOWNSHIP

INTERSECTION SR 2029(OXFORD VALLEY RD.), SR 2029(HEACOCK RD.) & T-344(OXFORD VALLEY RD.)

REVIEWED: \_\_\_\_\_ DATE: 5/11/95

RECOMMENDED BY: \_\_\_\_\_ DATE: 5/11/95

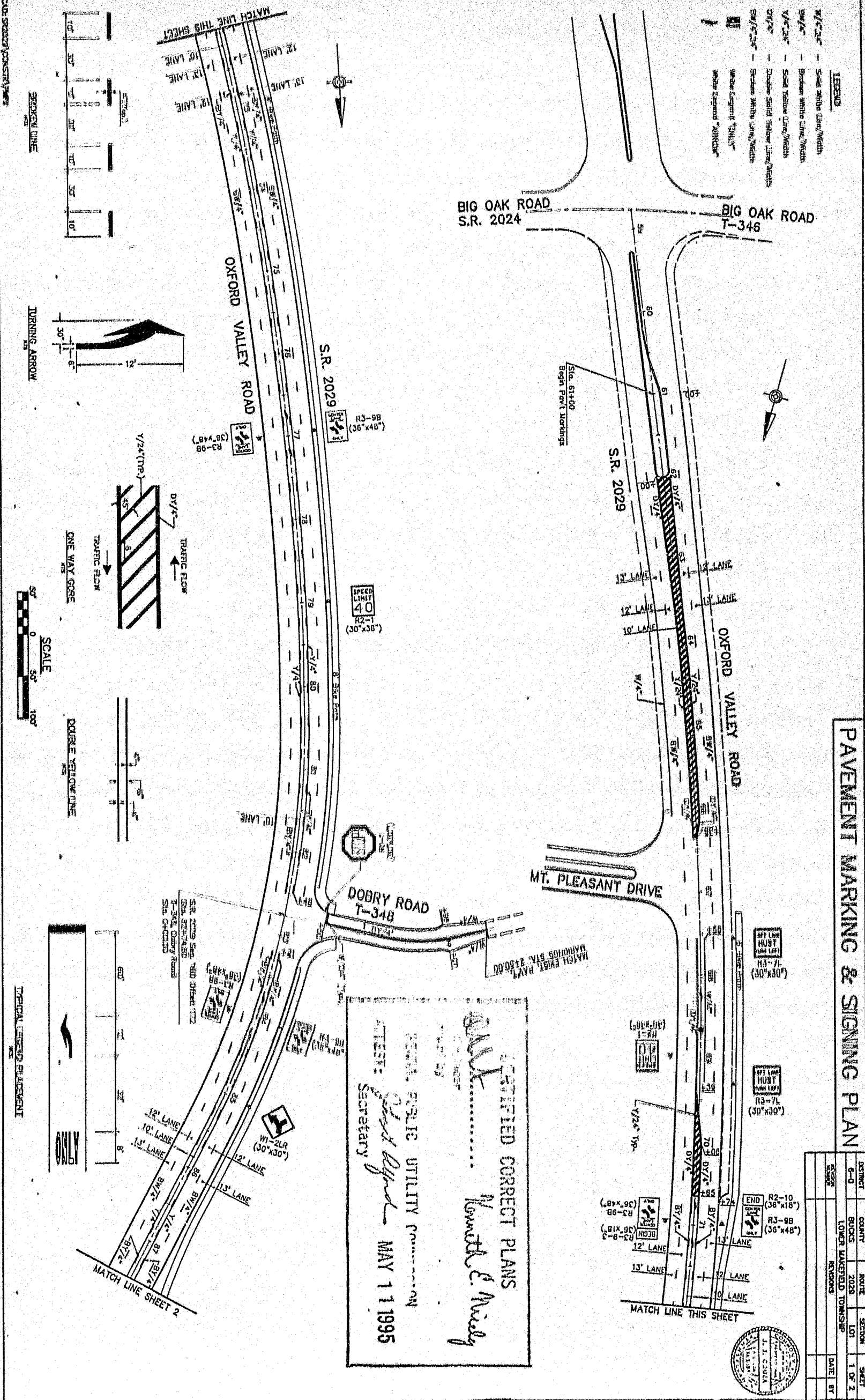
DISTRICT TRAFFIC ENGINEER: \_\_\_\_\_ DATE: 5/11/95

DATE: 5/11/95

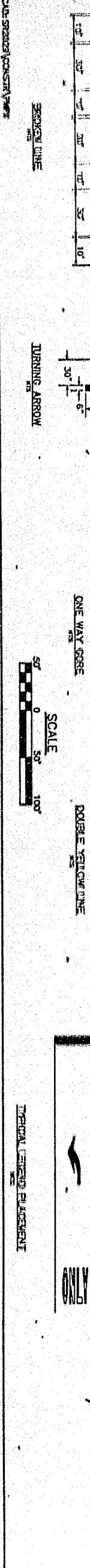
# PAVEMENT MARKING & SIGNING PLAN

DISTRICT	COUNTY	ROUTE	SECTION	SHEET
6-0	BUCKS	2029	LOT 1	1 OF 2
LOWER MERIDETH TOWNSHIP				DATE: BT

- LEGEND**
- SW/C 2 1/2" - Seal White Line/Width
  - SW/C 1" - Sealed White Line/Width
  - SW/C 2 1/4" - Seal Yellow Line/Width
  - DY/C 1" - Double Solid Yellow Line/Width
  - SW/C 2 1/4" - Sealed White Line/Width
  - SW/C 1" - Sealed White Line/Width
  - White Legend "X" MARK
  - White Legend "A" MARK



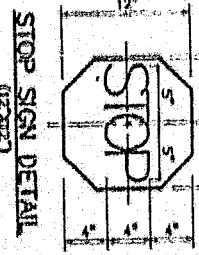
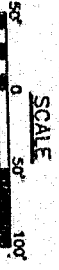
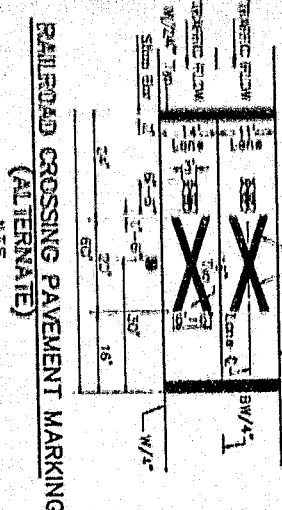
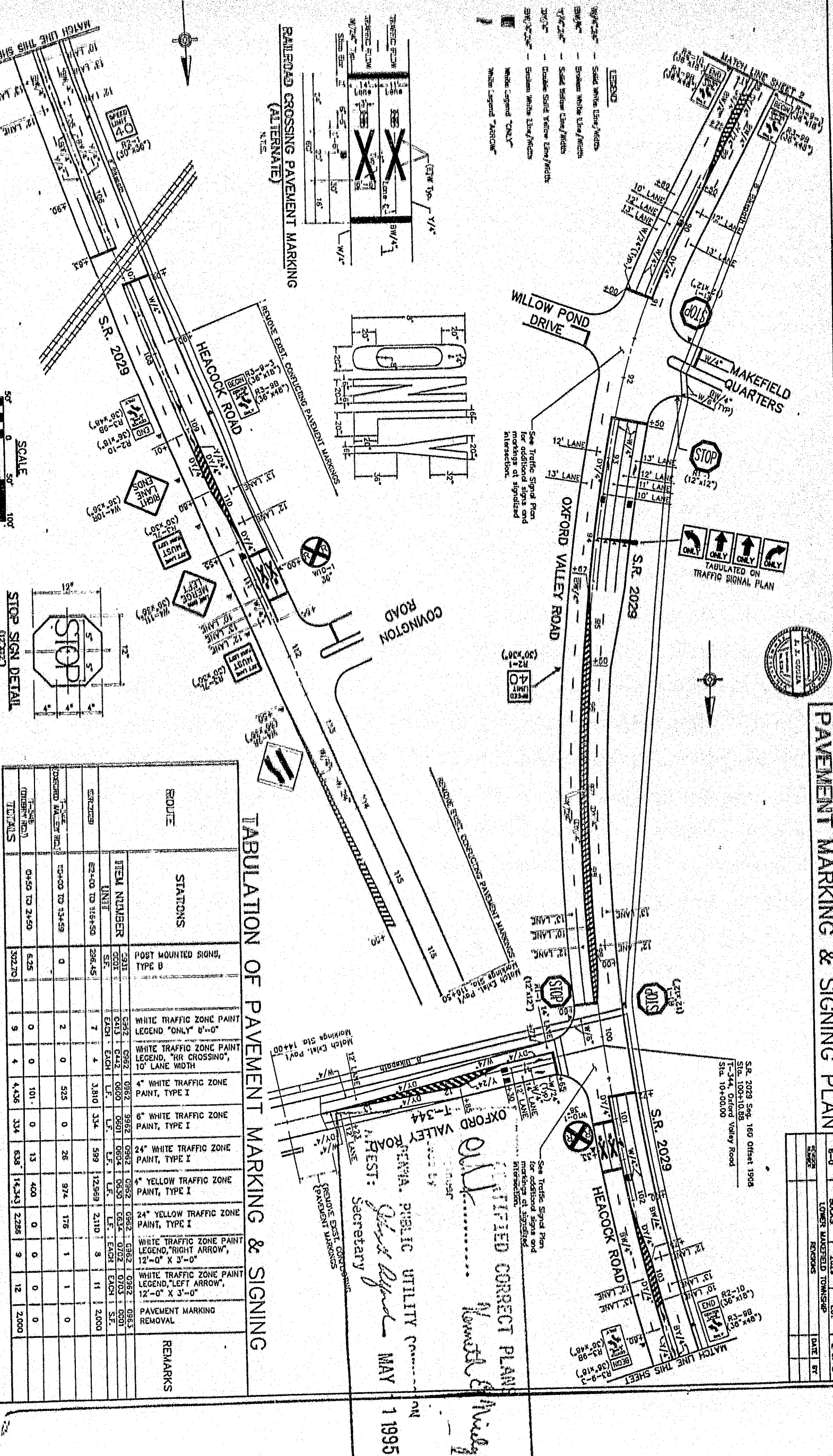
**CERTIFIED CORRECT PLANS**  
 I, *Robert E. Nield*  
 ENGINEER  
 SECRETARY  
 MAY 11 1995



# PAVEMENT MARKING & SIGNING PLAN

DISTRICT	COUNTY	ROUTE	SECTION	SHEET
6-0	2029	101	2 OF 2	
LOWER UNINCORPORATED TOWNSHIP	DATE	BY	REVISIONS	

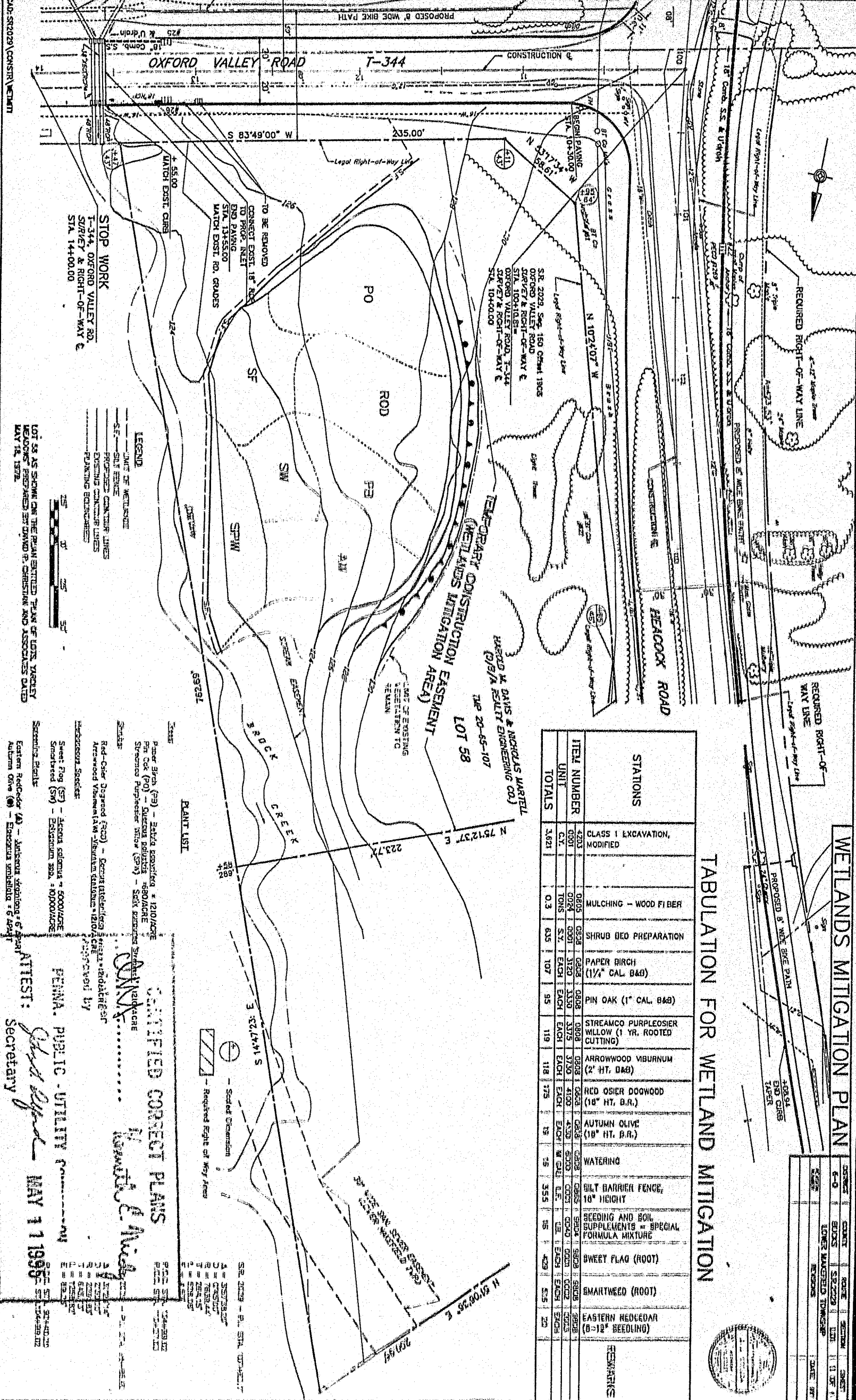
S.R. 2029 Spg. 160 Offset 1904  
 Sta. 100+10.00  
 T-344, Oxford Valley Road  
 Sta. 10+00.00



### TABULATION OF PAVEMENT MARKING & SIGNING

ROUTE	STATIONS	ITEM NUMBER	UNIT		REMARKS				
			QTY	LF.					
S.R. 2029	10+50 TO 2+50	POST MOUNTED SIGN, TYPE B	0	0					
		WHITE TRAFFIC ZONE PAINT LEGEND, "ONLY", 8'-0" X 3'-0"	2	0					
		WHITE TRAFFIC ZONE PAINT LEGEND, "RR CROSSING", 10' LANE WIDTH	0	0					
		4" WHITE TRAFFIC ZONE PAINT, TYPE I	0	101					
		6" WHITE TRAFFIC ZONE PAINT, TYPE I	0	334					
		24" WHITE TRAFFIC ZONE PAINT, TYPE I	0	13					
		4" YELLOW TRAFFIC ZONE PAINT, TYPE I	0	400					
		24" YELLOW TRAFFIC ZONE PAINT, TYPE I	0	0					
		WHITE TRAFFIC ZONE PAINT LEGEND, "RIGHT ARROW", 12'-0" X 3'-0"	1	0					
		WHITE TRAFFIC ZONE PAINT LEGEND, "LEFT ARROW", 12'-0" X 3'-0"	1	0					
		PAVEMENT MARKING REMOVAL	0	2,000					
		TOTALS		625	334	538	14,343	2,285	9

APPROVED CORRECT PLAN  
 SECRETARY  
 MAY 1 1995



**WETLANDS MITIGATION PLAN**

**TABULATION FOR WETLAND MITIGATION**

ITEM NUMBER	UNIT	CLASS I EXCAVATION, MODIFIED	MULCHING - WOOD FIBER	SHRUB BED PREPARATION	PAPER BIRCH (1 1/2" CAL. B&B)	PIN OAK (1" CAL. B&B)	STREAMCO PURPLEOSIER WILLOW (1 YR. ROOTED CUTTING)	ARROWWOOD VIBURNUM (2' HT. B&B)	RED OSIER DOGWOOD (18" HT. B.R.)	AUTUMN OLIVE (18" HT. B.R.)	WATERING	BILT BARRIER FENCE, 10" HEIGHT	BEEING AND SOIL SUPPLEMENTS - SPECIAL FORMULA MIXTURE	SWEET FLAG (ROOT)	SMARTWEED (ROOT)	EASTERN HEDGECAR (8-12" BEEDLING)
4203	C.Y.	3.621	0.3	6.5	107	95	119	116	175	15	75	355	85	403	53	20
<b>TOTALS</b>																

**STOP WORK**  
 T-344, OXFORD VALLEY RD.  
 SURVEY & RIGHT-OF-WAY &  
 STA. 14+00.00

**PLANT LIST**

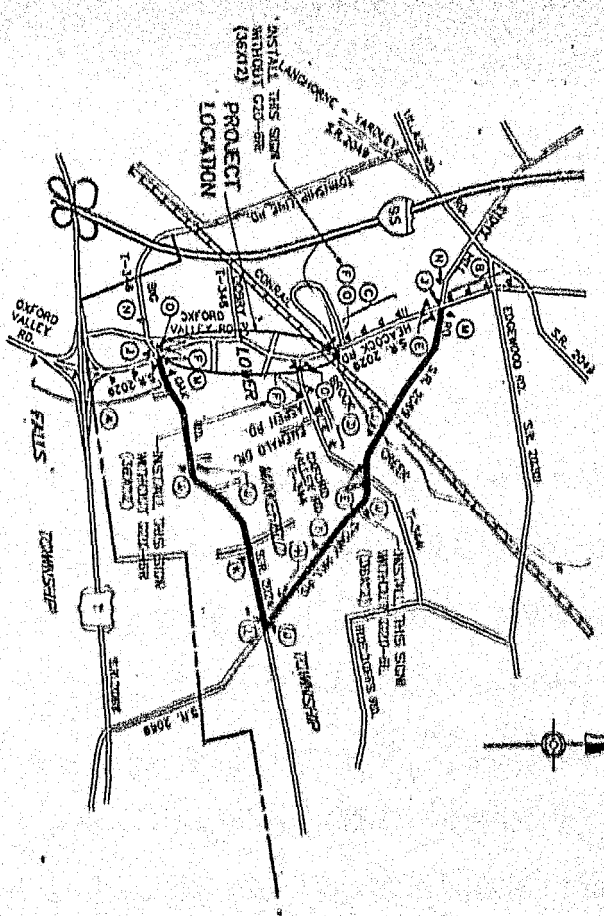
Plant: Sweet Flag (SF) - *Sagittaria arifolia* \* 5000/ACRE  
 Pin Oak (PO) - *Quercus palustris* \* 600/ACRE  
 Streamco Purpleosier Willow (SPW) - *Salix purpurea* \* 600/ACRE

Species:  
 Red-Osier Dogwood (ROD) - *Cornus glomerata* \* 1200/ACRE  
 Arrowwood Viburnum (AV) - *Viburnum dentatum* \* 1800/ACRE

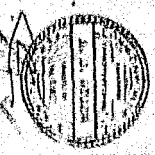
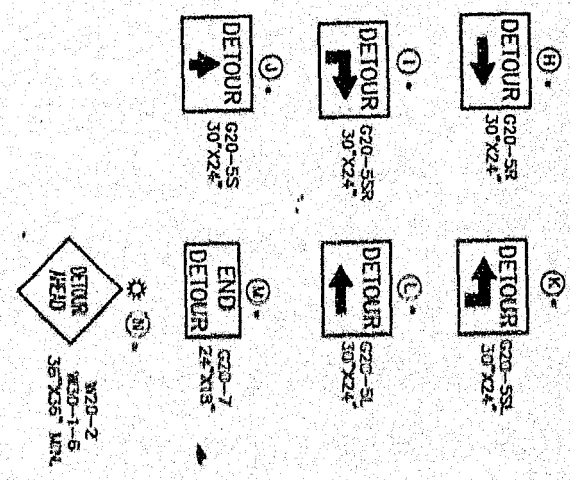
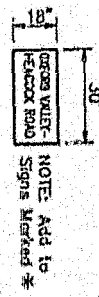
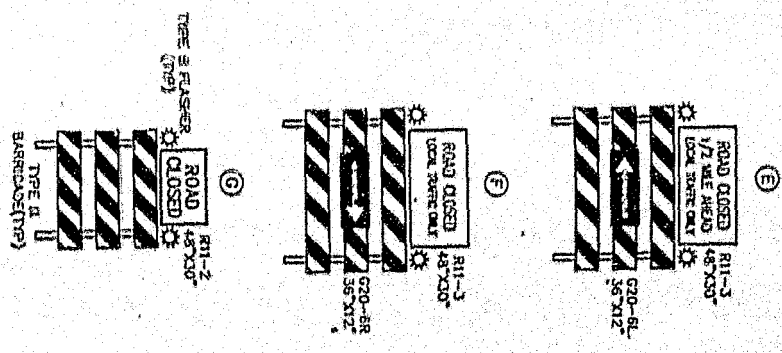
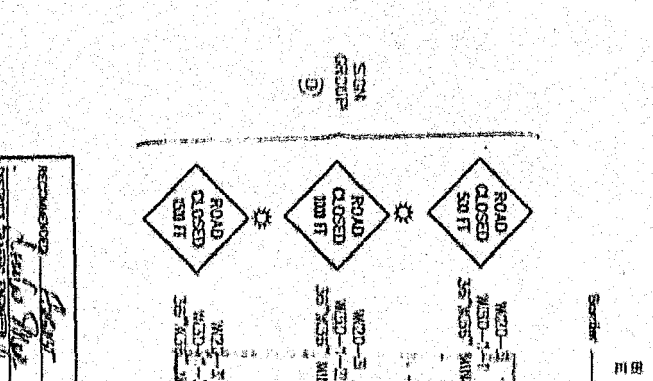
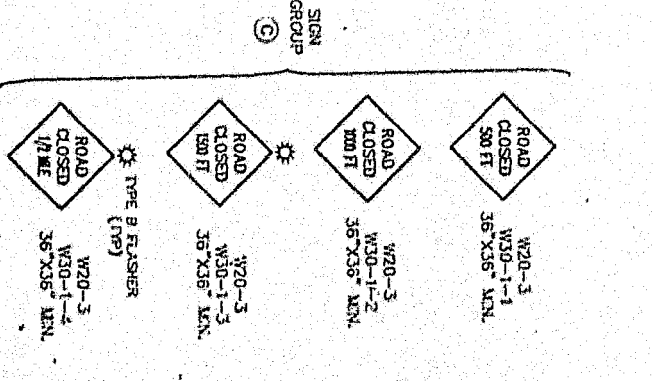
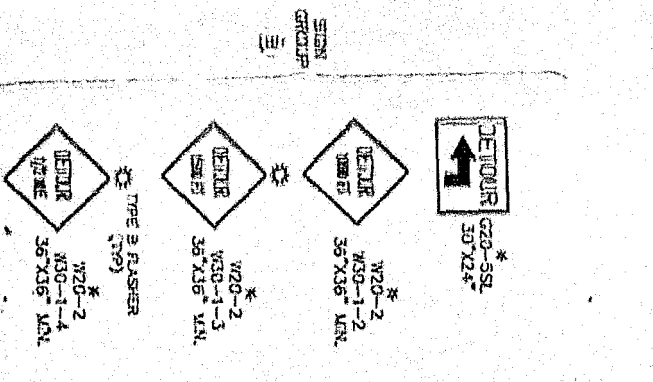
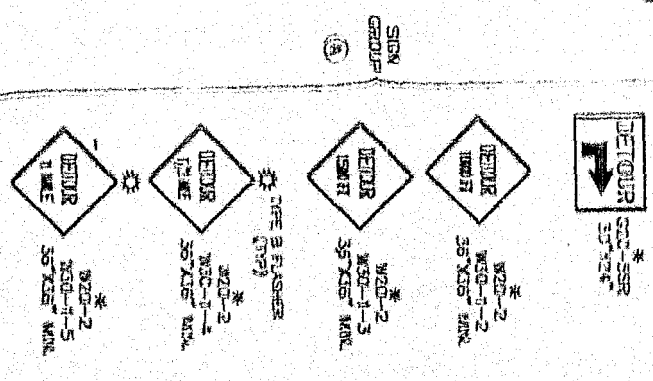
Seeds:  
 Sweet Flag (SF) - *Sagittaria arifolia* \* 5000/ACRE  
 Smartweed (SM) - *Eleocharis acicularis* \* 10000/ACRE

Planting Details:  
 Eastern Redcedar (AR) - *Juniperus virginiana* \* 6' apart  
 Autumn Olive (AO) - *Elaeagnus umbellata* \* 6' apart

**ATTEST:**  
 PENNA. PUBLIC UTILITY COMMISSION  
 MAY 11 1995

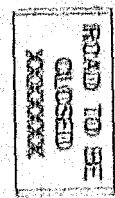


DETOUR ROUTE



GENERAL NOTES

The Contractor will furnish, erect, place and maintain the traffic signs and devices, and maintain traffic during hours of construction and at all other times in accordance with the provisions of the contract. The Contractor shall be responsible for the maintenance of the traffic signs and devices during the construction period. The Contractor shall be responsible for the maintenance of the traffic signs and devices during the construction period. The Contractor shall be responsible for the maintenance of the traffic signs and devices during the construction period.



ROAD TO BE CLOSED  
XXXXXXXXXX

Sign No.	Sign Description	Quantity	Notes
W20-2	DETOUR (Type B Flasher)	1	
W30-1-1	ROAD CLOSED (Type B Flasher)	1	
W30-1-2	ROAD CLOSED (Type B Flasher)	1	
W30-1-3	ROAD CLOSED (Type B Flasher)	1	
W30-1-4	ROAD CLOSED (Type B Flasher)	1	
W30-1-5	ROAD CLOSED (Type B Flasher)	1	
W30-1-6	ROAD CLOSED (Type B Flasher)	1	
W30-1-7	ROAD CLOSED (Type B Flasher)	1	
W30-1-8	ROAD CLOSED (Type B Flasher)	1	
W30-1-9	ROAD CLOSED (Type B Flasher)	1	
W30-1-10	ROAD CLOSED (Type B Flasher)	1	
W30-1-11	ROAD CLOSED (Type B Flasher)	1	
W30-1-12	ROAD CLOSED (Type B Flasher)	1	
W30-1-13	ROAD CLOSED (Type B Flasher)	1	
W30-1-14	ROAD CLOSED (Type B Flasher)	1	
W30-1-15	ROAD CLOSED (Type B Flasher)	1	
W30-1-16	ROAD CLOSED (Type B Flasher)	1	
W30-1-17	ROAD CLOSED (Type B Flasher)	1	
W30-1-18	ROAD CLOSED (Type B Flasher)	1	
W30-1-19	ROAD CLOSED (Type B Flasher)	1	
W30-1-20	ROAD CLOSED (Type B Flasher)	1	
W30-1-21	ROAD CLOSED (Type B Flasher)	1	
W30-1-22	ROAD CLOSED (Type B Flasher)	1	
W30-1-23	ROAD CLOSED (Type B Flasher)	1	
W30-1-24	ROAD CLOSED (Type B Flasher)	1	
W30-1-25	ROAD CLOSED (Type B Flasher)	1	
W30-1-26	ROAD CLOSED (Type B Flasher)	1	
W30-1-27	ROAD CLOSED (Type B Flasher)	1	
W30-1-28	ROAD CLOSED (Type B Flasher)	1	
W30-1-29	ROAD CLOSED (Type B Flasher)	1	
W30-1-30	ROAD CLOSED (Type B Flasher)	1	

TRAFFIC CONTROL PLAN  
DETOUR ROUTE

RECOMMENDED  
1. *[Signature]*  
2. *[Signature]*

DATE: MAY 11 1995

*[Signature]*