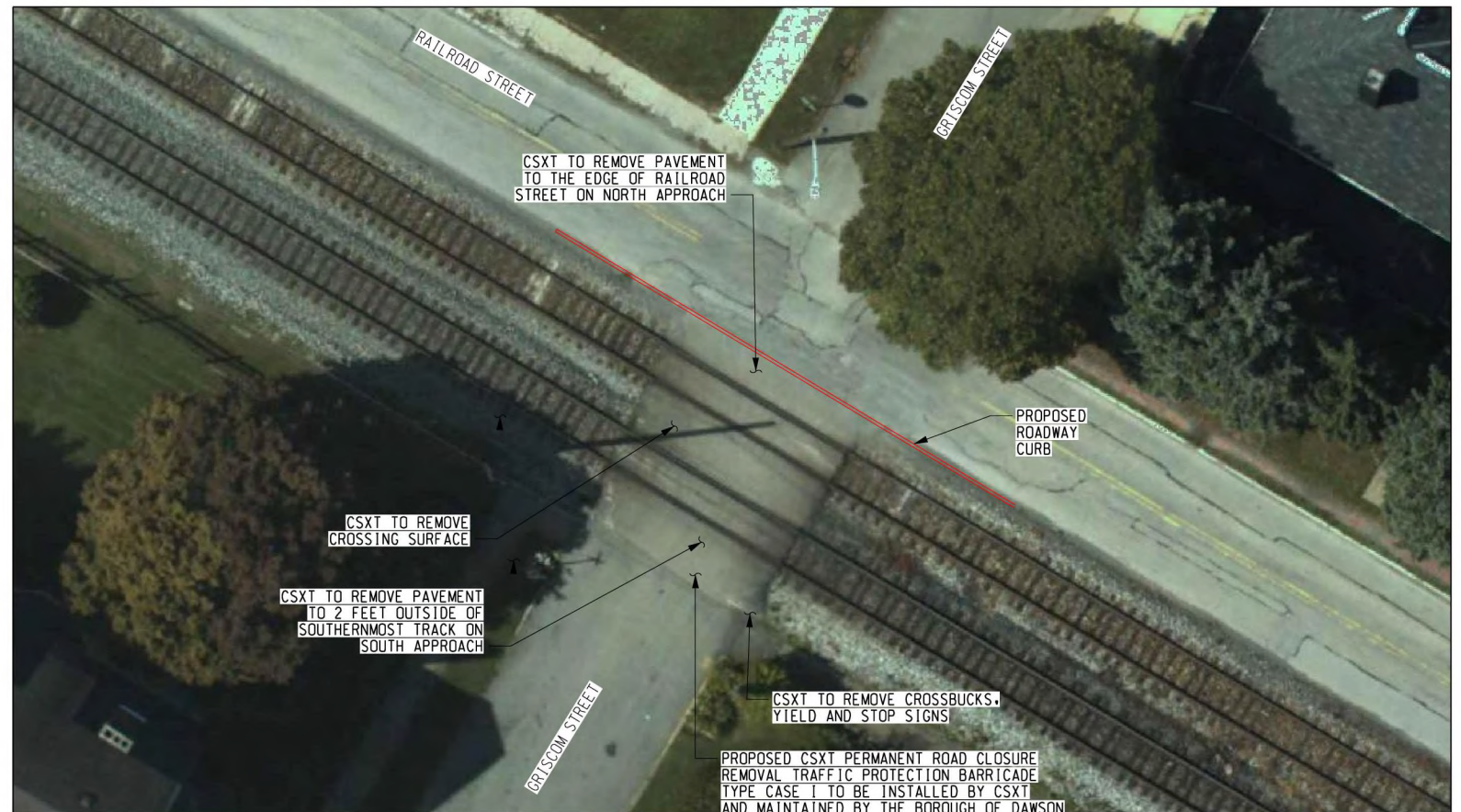


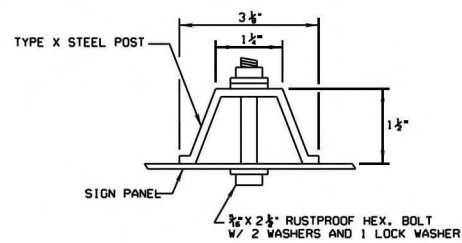
VICINITY MAP

NOT TO SCALE



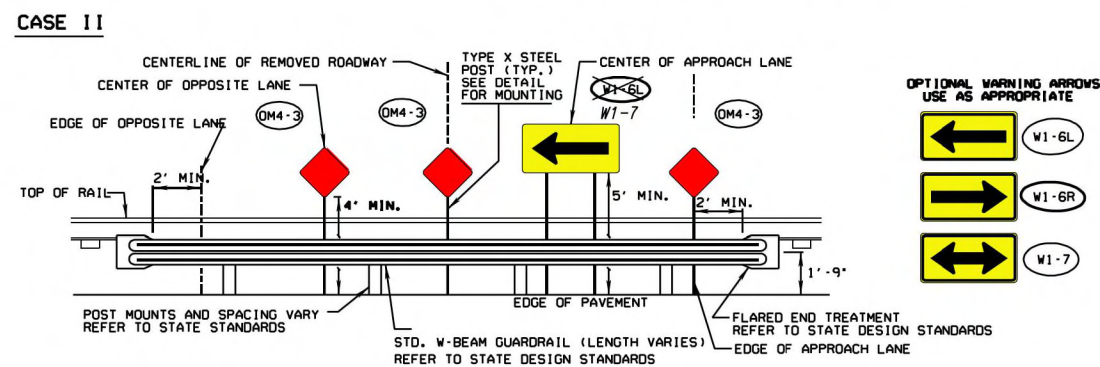
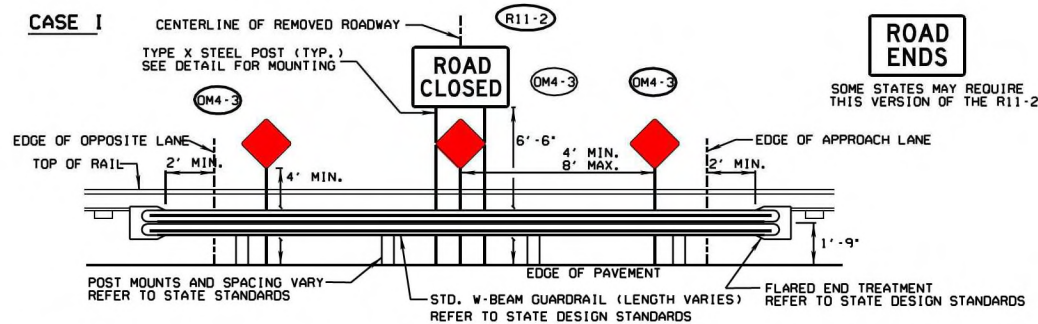
GRISCOM STREET CLOSURE PLAN

A-2020-3020537

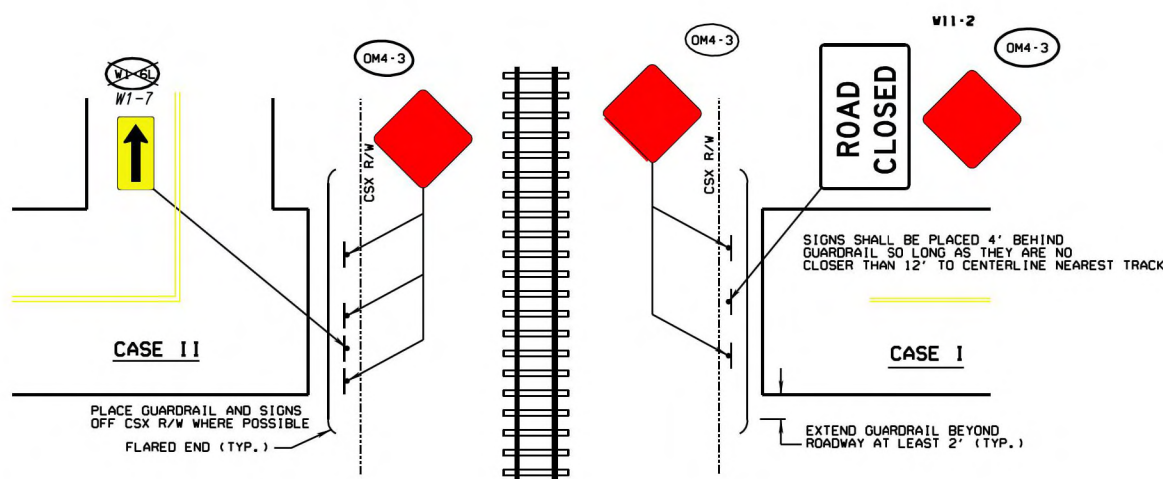


MOUNTING DETAIL

DESCRIPTION	UNIT
SIGN, OM4-3 18"X18" RED DIAMOND	EACH
SIGN, R11-2 48"X24" ROAD CLOSED	EACH
SIGN, R11-2 48"X24" ROAD ENDS	EACH
SIGN, W1-6 48"X30" SINGLE ARROW	EACH
SIGN, W1-7 48"X30" DOUBLE ARROW	EACH
SIGN POST, METAL TYPE X	EACH



CLOSURE DETAILS



PLAN

CERTIFIED CORRECT PLANS

Arthur P. ...
Professional Engineer
 Approved by **Bureau of Technical Utility Services**
PA PUBLIC UTILITY COMMISSION

ATTEST *Rosemary ...*
Secretary

TRAFFIC PROTECTION:

1. ERECT GUARDRAIL AND SIGNS AS SHOWN.
2. GUIDERAIL AND SIGN PANELS SHALL BE INSTALLED IN ACCORDANCE WITH DESIGN STANDARDS AND SPECIFICATIONS OF THE STATE IN WHICH THEY ARE TO BE INSTALLED. SIGNS TO BE MADE IN ACCORDANCE WITH STANDARD HIGHWAY SIGNS MANUAL 2004 EDITION.
3. SIGN BLADE: 0.080" ALUMINUM ALLOY 5052-H38 OR 606-T6 WITH ROUNDED CORNERS. HOLES TO BE 7/16" DIAMETER. BLADE TO BE DEGRADED AND ETCHED PRIOR TO THE APPLICATION OF REFLECTIVE SHEETING.
4. FACING: WHITE, RED, OR YELLOW (AS APPROPRIATE FOR SIGN) SCOTCHLITE DIAMOND GRADE VIP REFLECTIVE SHEETING MANUFACTURED BY THE 3M CORPORATION AND IN COMPLIANCE WITH THE PHYSICAL REQUIREMENTS OF LATEST EDITION OF ASTM D4956.
5. LETTERS: BLACK SILKSCREEN OR SCOTCHCAL AND CONFORM TO THE FEDERAL HIGHWAY ADMINISTRATION STANDARD ALPHABET, SERIES "D" 2000 EDITION.
6. ADVANCE WARNING SIGNS, TURN PROHIBITION SIGNS, OR ANY OTHER NECESSARY TRAFFIC CONTROL DEVICE THAT IS NOT LOCATED ON CSX PROPERTY SHALL BE INSTALLED BY OTHERS.

DAWSON BOROUGH, FAYETTE COUNTY, PENNSYLVANIA
 CLOSURE OF GRISCOM STREET
 GRADE CROSSING WITH CSXT
 CENTRAL ZONE, PITTSBURGH SUBDIVISION
 DOT 145455H, MP BF-275.74

PROJECT NUMBER: _____
 CONTRACT ITEM: _____
 PHYSICAL ELEMENT: _____
 WORK ELEMENT: _____