

December 22, 2025

Public Utility Commission
Commonwealth of Pennsylvania

Docket No. TBD

Please find the following documents included with this cover letter.

1. Application
2. Plan and Profile Drawing
3. Certificate of Service

Sincerely,

Chris Sloce

Chirs Sloce

**BEFORE
PENNSYLVANIA PUBLIC UTILITY COMMISSION**

In re: Application of Gigapower LLC Application Docket No.
for approval of the alteration of the
aerial crossing 859635E by the installation
of fiber optic cable where Pierce Ave crosses
below grade of the rail bridge of Norfolk
Southern Railway, located in Kingston
Borough in Luzerne County.

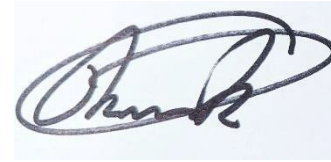
To Pennsylvania Public Utility Commission:

1. The name and address of applicant are:
GIGAPOWER, LLC (see local mailing address pg. 2)
311 S Akard St. – 21st Floor
Dallas, TX 75202
2. The name and address of applicant's attorney are:
Thomas Grace - CCO and Chief Counsel
GIGAPOWER, LLC
311 S Akard St. – 21st Floor
Dallas, TX 75202
3. GIGAPOWER, LLC provides Optical Network Infrastructure for use by Internet Service Providers and other data transmission.
4. Adding an attachment for a communications fiber optic cable intersection of Pierce Ave and North Gates ave at the joint use pole (41.258509, -75.884511) crossing under the Norfolk Southern Railway at (41.258724, -75.884713) 156' northwest to the joint use pole (41.258846, -75.884854).
5. The following public utilities who may be affected by or concerned with the proposed alteration of the crossing are UGI Utilities Inc., Verizon, Xfinity, Frontier, T-Mobile, Astound Broadband, Service Electric Cable TV. The following municipalities who may be affected by or concerned with the proposed alteration of the crossing are the Kingston Borough. The following property owners who may be affected by or concerned with the proposed alteration of the crossing are Delaware-Lackawanna Railroad.
6. Estimated cost of construction not to exceed \$10,000 – Gigapower LLC. Is responsible for the installation, maintenance, and inspection of such facilities and will be the responsible for all associated costs related to the installation, maintenance, and inspection of such facilities.

7. The alteration is necessary or proper for the following reasons: To provide the residence of the city of Dickson City with access to high quality fiber internet.

Wherefore, applicant prays your Honorable Commission to approve the application:

Rich Rehak Jr.
Director of Network Operations NEPA
GIGAPOWER, LLC
116 N. Washington
Ave, Suite 3220
East Greenville, PA 18503



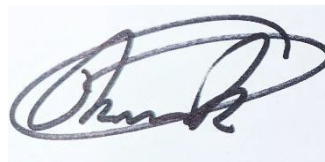
(Signature of Applicant)

§ 1.36. Verification.

- (a) Applications, petitions, formal complaints, motions and answers thereto containing an averment of fact not appearing of record in the action or containing a denial of fact shall be personally verified by a party thereto or by an authorized officer of the party if a corporation or association. Verification means a signed written statement of fact supported by oath or affirmation or made subject to the penalties of 18 Pa. C.S. §4904 (relating to unsworn falsification to authorities). If verification is required, notarization is not necessary.
- (b) The Verification form should comply substantially with the following:

VERIFICATION

I, Rich Rehak Jr. , hereby state that the facts above set forth are true and correct (or are true and correct to the best of my knowledge, information and belief) and that I expect to be able to prove the same at a hearing held in this matter. I understand that the statements herein are made subject to the penalties of 18 Pa. C.S. § 4904 (relating to unsworn falsification to authorities).



Date: December 22, 2025

(Signature)

CERTIFICATE OF SERVICE

I hereby certify that I have this day served a true copy of the foregoing document upon the participants, listed below, in accordance with the requirements of § 1.54 (relating to service by participant).

Norfolk Southern Railway Company
650 W. Peachtree Street NW Atlanta, Georgia 30308

PADOT: Jeremiah Gonzalo
jgonzalo@pa.gov
55 Keystone Industrial Park, Dunmore, PA 18512

Kingston Borough, David Yefko
zoning@kingstonpa.org
500 Wyoming Avenue Kingston Borough, PA 18704

UGI Utilities, Inc.
One UGI Center Wilkes-Barre, PA 18711

Verizon Pennsylvania Inc.: Deborah Barum
poleconduitadmin1@verizon.com, dgcavuto@ctdi.com
1026 Hay St., Wilkesburg, PA 15221

North Penn Long Distance Corporation: Empire/North Penn Telephone
ospeng@etcnpt.com
34 Main Street, Prattsburgh, NY 14873

Comcast - Duryea: Americomm
carol@americomm-llc.com, heather@americomm-llc.com
21 State Ave (Suite 1), Carlisle, PA 17013

JON Holdco LLC: Sheena Wiater
scharney@firstlight.net, swiater@firstlight.net, smercier@firstlight.net, f1f-licensing@firstlight.net,
rsitler@firstlight.net
7890 Lehigh Crossing, Victor, NY 14564

Teleport Communications America LLC: MCarlo Verdi III
cverdi@att.com, jay@trecgroup.com
900 Old Marple Rd., Springfield, PA 19064

CTSI, LLC: Mary Rodman
PA.Structure.Access@ftr.com
100 CTE Drive, Dallas, PA 18612

ZitoMedia IZito West Holding, LLC: Kelly Ragosta
kelly.ragosta@zitomedia.com
PO Box 665 - 102 South Main Street, Coudersport, PA 16915

XO Communications, Inc.: Scott Dreiling
scott.j.dreiling@xo.com
1220 Broadcasting Road, Wyomissing, PA 19610

Chris Sloce

(Signature)

Dated this 7th day of October, 2025.

PLAN PREPARATION

OWNER:
GIGAPOWER
P.O. BOX 179
EAST GREENVILLE, PA 18041

NICOLE ATHERHOLT
DIRECTOR OF NETWORK OPERATIONS
NICOLE.ATHERHOLT@GIGAPOWER.COM

RICH REHAK
OUTSIDE PLANT SUBJECT MATTER
EXPERT
RICH.REHAK@GIGAPOWER.COM

DANIEL STELMACK
CONSTRUCTION LEAD - PA
DANIEL.STELMACK@GIGAPOWER.COM
570-589-5533

ENGINEERING FIRM:
4200 CORNING PLACE
CHARLOTTE, NC 28216

EDWIN ROGERS
PROGRAM MANAGER
ROGERSE2@CORNING.COM

EDDIE LOWE
SENIOR OUTSIDE PLANT ENGINEER
LOWEED@CORNING.COM

PERMIT DRAWN BY:
CHRIS SLOCE
ENGINEER/TECH
SLOCEC3@CORNING.COM

PROJECT INFORMATION

MASTER PROJECT: GIGAPOWER - NEON-LIMA
PROJECT NAME: WB301-RT3-SEC4-HANL
CORNING PROJECT NUMBER: CORNING NUMBER P-#####
PPL APPLICATION NUMBER: NA

DISTRICT	COUNTY	BOROUGH	ROUTE	SEGMENT	OFFSET	TOTAL SHEETS
4	40	KINGSTON	ROAD_NUMBER	0010	1186	11
	40	KINGSTON	ROAD_NUMBER	0010	1340	

RIGHT-OF-WAY OCCUPANCY PERMIT

448 PIERCE ST
KINGSTON, (LUZERNE), PENNSYLVANIA
FROM STA. N/A TO STA. N/A LENGTH 156' FT
DATE: 12/3/2025

CROSSING #859635E
RAILROAD SUBDIVISION: D&H SOUTH
RAILROAD DIVISION OR REGION: KEYSTONE
NEAREST RR TIMETABLE STATION: HUDSON
RR MILEPOST: HA0688.750
MAXIMUM **TIMETABLE** SPEED: 25MPH

SHEET INDEX

001	COVER SHEET
002	NOTES
003	LEGEND
004	PLAN OVERVIEW
005	ELEVATION VIEW 1
006	ELEVATION VIEW 2
TYPICAL DETAILS	
601	POLE BONDING & GROUNDING
602	RISERS
603	SUSPENSION CLAMPS DETAILS
604	DOWN GUY DETAILS
605	POLE SLACK DETAILS
606	CROSSING INVENTORY REPORT

LIST OF PUBLIC UTILITIES

WATER & WASTEWATER
PENNSYLVANIA AMERICAN WATER (800) 565-7292
LACKAWANNA RIVER BASIN SEWER AUTH (570) 489-7563
WYOMING VALLEY SANITARY AUTH (570) 825-3416

ELECTRICAL

PPL COMPANY (800) 342-5775
BLAKELY ELEC. (570) 383-3340
UGI UTILITIES (800) 276-2722

GAS

UGI UTILITIES (800) 276-2722

COMMUNICATIONS

COMCAST - DURVEA
FRONTIER
LOOP INTERNET
SERVICE ELECTRIC
VERIZON PENNSYLVANIA

MUNICIPALITIES (LACKAWANNA)

ARCHBALD (570) 876-1800
BLAKELY (570)-383-3340
DUNMORE (570) 343-7611
JESSUP (570) 489-0411
OLYPHANT (570) 489-2135
THROOP (570) 489-8311
ROADS & BRIDGES (570) 496-7733

MUNICIPALITIES (LUZERNE)

HANOVER TWP (570) 825-8522
KINGSTON (570) 288-4576

Y PROJECT LIMITS

NTS

STATE HWY

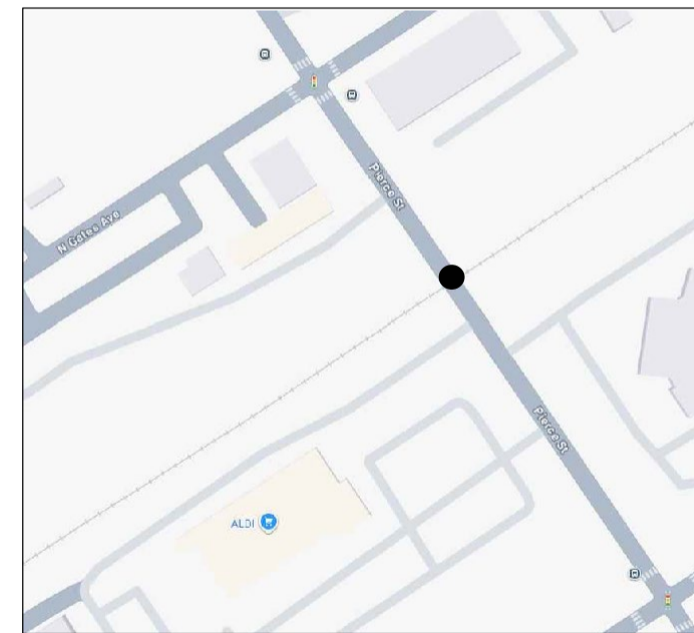
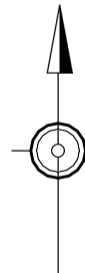
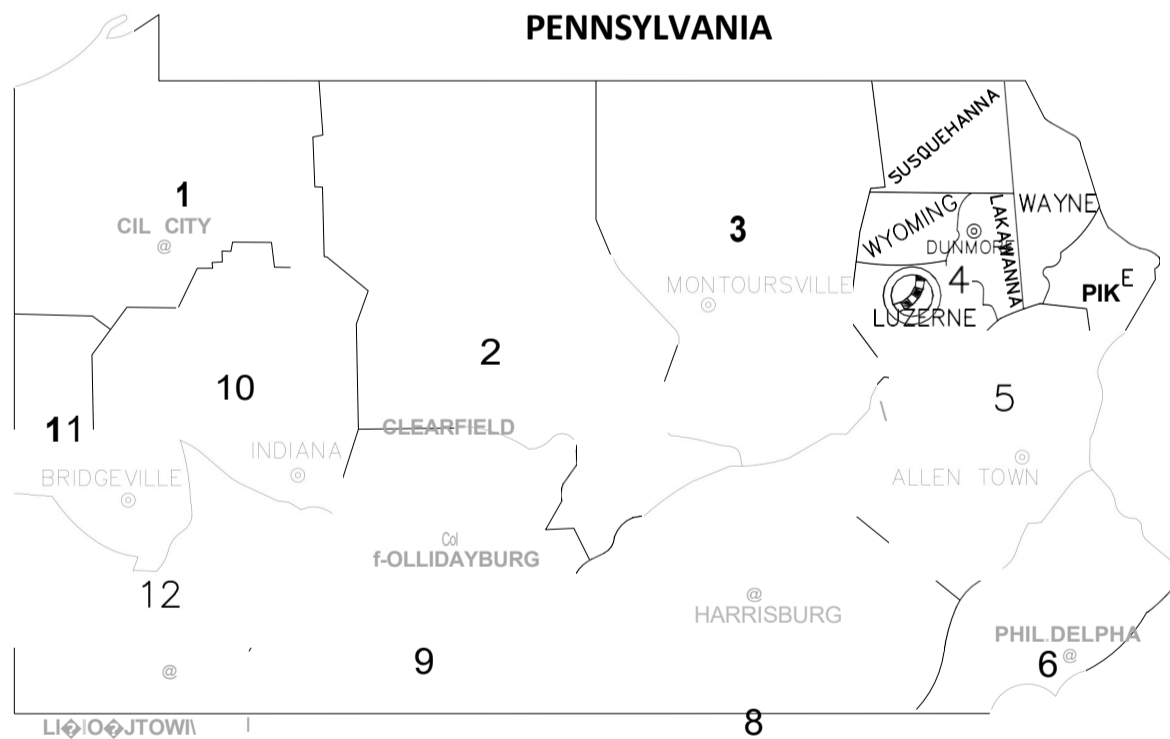
BOROUGH STREETS



R

W

A



LOCATION MAP

PRC,FCT | OCATIOφJ

PAVEMENT WIDTH
50'
SHOULDER WIDTH
N/A'

DESIGN DESIGNATION
HIGHWAY CLASSIFICATION FREE ACCESS
DESIGN SPEED 25 MPH

(34 X 22 INCHES)

0 1 2 3 4 5 6 7 8 9 10 11 12 13 14 15 16 17 18 19 20 21 22 23 24 25 26 27 28 29 30 31 32 33 34 35 36 37 38 39 40 41 42 43 44 45 46 47 48 49 50 51 52 53 54 55 56 57 58 59 60 61 62 63 64 65 66 67 68 69 70 71 72 73 74 75 76 77 78 79 80 81 82 83 84 85 86 87 88 89 90 91 92 93 94 95 96 97 98 99 100

N 735-2800
A 654-4601
N 822-9282
TI 208-4635
C 825-1600
O
K
E

(5
70
)
PI CALL BEFORE YOU DIG
TT
ST PENNSYLVANIA LAW REQUIRES 3
O TO 10 WORKING DAYS NOTICE FOR
N CONSTRUCTION PHASE BASED ON
PROJECT COMPLEXITY AND 10
(5 WORKING DAYS IN DESIGN STAGE -
70 STOP CALL 1-800-242-1776
)

SU THE PA ONE CALL NOTIFICATIONS
GA PERFORMED DURING PROJECT
R DEVELOPMENT ARE AS FOLLOWS:

N
O P
T R
C H
E L
L

(5 I
70 M
) I
WLN
LKA
E R
S R
B Y
A D
R E
S I
E I
G
(5
70 N
) S
R E
O R
A D I
& B R A
I D L N
G E S O
(57
0)

:
(
N
j
/
W
O
T
U
S
E
O
N
:
D
I
O
M
◆
D
I
D
:
(
.
1
3
,
E
Y
Y

FOR: WB301-RT3-SEC4-HANL

0		ORIGINAL
REV	DATE	DESCRIPTION
REVISIONS		

GENERAL PERMIT NOTES:

1. THE EXISTING SPEED LIMIT ON ROAD_NUMBER IS 25 M.P.H
2. THE RIGHT-OF-WAY IS 50'.
3. ALL WORK IN PA STATE HIGHWAY RIGHT-OF WAY IS TO BE PERFORMED CONSISTENT WITH THE FOLLOWING:
 - 3.1. PENNDOT PUBLICATION 13M, DESIGN MANUAL PART 2 - HIGHWAY DESIGN
 - 3.2. PENNDOT PUBLICATION NO. 34, APPROVED AGGREGATE PRODUCERS (BULLETIN 14)
 - 3.3. PENNDOT PUBLICATION NO. 35, APPROVED CONSTRUCTION MATERIALS (BULLETIN 15)
 - 3.4. PENNDOT PUBLICATION NO. 41, PRODUCERS OF BITUMINOUS MATERIALS (BULLETIN 41)
 - 3.5. PENNDOT PUBLICATION NO. 42, PRODUCERS OF READY-MIX CONCRETE (BULLETIN 42)
 - 3.6. PENNDOT PUBLICATION NO. 46, TRAFFIC ENGINEERING MANUAL
 - 3.7. PENNDOT PUBLICATION NO. 72M, STANDARDS FOR ROADWAY CONSTRUCTION
 - 3.8. PENNDOT PUBLICATION NO. 111, PAVEMENT MARKINGS AND SIGNING STANDARDS
 - 3.9. PENNDOT PUBLICATION NO. 212, OFFICIAL TRAFFIC CONTROL DEVICES
 - 3.10. PENNDOT PUBLICATION NO. 213, TEMPORARY TRAFFIC CONTROL GUIDELINES
 - 3.11. PENNDOT PUBLICATION NO. 408, SPECIFICATIONS
4. PA STATE HIGHWAY RIGHT-OF-WAY MAY NOT BE USED FOR PARKING.
5. PERMITTEE AND PERMITTEE'S CONTRACTOR IS RESPONSIBLE FOR MAINTENANCE OF ALL AUTHORIZED STRUCTURES, FACILITIES, AND DRAINAGE.
6. PERMITTEE AND PERMITTEE'S CONTRACTOR IS RESPONSIBLE FOR MAINTENANCE OF ALL AUTHORIZED SIGNS AND PAVEMENT MARKINGS.
7. THREE TO TEN WORKING DAYS PRIOR TO EXCAVATION BASED ON THE COMPLEXITY OF THE PROJECT, THE CONTRACTOR MUST CONTACT THE PA ONE CALL SYSTEM, INC., PHONE 1-800-242-1776. SERIAL NO. () FOR THE MUNICIPALITY OF KINGSTON. ADDITIONAL INFORMATION IS AVAILABLE AT <https://www.pocoll.org/po811/Public/>
8. THE CONTRACTOR IS REQUIRED TO NOTIFY THE DEPARTMENT AND SUBMIT AN ALLEGED VIOLATION REPORT (AVR) TO THE PA PUBLIC UTILITY COMMISSION THROUGH THE PA ONE CALL SYSTEM, www.pa1coll.org WITHIN TEN (10) BUSINESS DAYS AFTER A UTILITY IS STRUCK, DAMAGED, OR PREVIOUS DAMAGE IS DISCOVERED AS REQUIRED BY PENNSYLVANIA'S UNDERGROUND UTILITY LINE PROTECTION LAW ACT 50 (P.L.852, NO. 287 AMENDED OCT. 30, 2017).
9. IF A TRAFFIC SIGNAL IS WITHIN 500 FEET OF THE SITE, CALL THE DISTRICT TRAFFIC ENGINEER AT LEAST 3 DAYS PRIOR TO THE START OF WORK.
10. ALL PROPOSED PEDESTRIAN FACILITIES REFLECTED ON THESE PLANS, INCLUDING THOSE THAT ARE OUTSIDE OF PENNDOT LEGAL RIGHT-OF-WAY, SHALL BE CONSTRUCTED TO COMPLY WITH THE REQUIREMENTS OF THE U.S. ACCESS BOARD, PUBLIC RIGHT OF WAY ACCESSIBILITY GUIDELINES OF BUILDINGS OF THE ACCESSIBILITY OF BUILDINGS AND FACILITIES (ADAAG, PENNDOT DESIGN MANUAL PART 2, CHAPTER 6, AND PENNDOT STANDARDS FOR ROADWAY CONSTRUCTION (PENNDOT PUBLICATION 7M, RC-67M) PROVIDE GUIDANCE ON ADA ACCESSIBLE DESIGN FOR PEDESTRIAN FACILITIES AND CAN BE UTILIZED FOR REFERENCE.
11. CONSTRUCT ALL PROPOSED PEDESTRIAN FACILITIES ON THESE PLANS TO COMPLY WITH THE AMERICANS WITH DISABILITIES ACT, PUBLIC RIGHT-OF-WAY ACCESSIBILITY GUIDELINES (PROWAG), AND THE 2010 ADA STANDARDS.
12. IT IS THE RESPONSIBILITY OF THE PERMITTEE AND PERMITTEE'S CONTRACTOR TO REMOVE AND DEBRIS AND FLUSH OUT ALL EXISTING AND NEW STORM DRAINAGE FACILITIES WITHIN THE PROJECT LIMITS AT THE COMPLETION OF CONSTRUCTION.

RESTORATION NOTES:

1. BACKFILL COMPACTION TESTING DOCUMENTATION IS REQUIRED. (PENNDOT PUBLICATION 282, CHAPTER 5.1 PAGE 160.)
2. OPENINGS SHALL BE BACKFILLED BY THE CONTRACTOR IN ACCORDANCE WITH DEPARTMENTS STANDARDS SPECIFICATIONS AND DETAILS. (67 PA CODE, CHAPTER 459.8(G)).
3. ALL TESTS PITS IN THE PAVEMENT SHALL FOLLOW RESTORATION FOR FLEXIBLE PAVEMENT.
4. PENNDOT INSPECTOR IS REQUIRED DURING TRENCH BACKFILL IN PAVEMENT, SIDEWALK, AND SHOULDER (PENNDOT PUBLICATION 282, CHAPTER 5.2, PAGE NO. 164)
5. CONTRACTOR SHALL RESTORE AREAS DISTURBED BY CONSTRUCTION OPERATIONS TO THEIR ORIGINAL CONDITION EXCEPT FOR THE REPLACEMENT OF TREES UNLESS OTHERWISE INDICATED.
6. TREES SHALL BE TRIMMED OR REMOVED AS REQUIRED FOR THE INSTALLATION OF UTILITY LINES. TREES THAT DO NOT REQUIRE REMOVAL SHALL BE PROTECTED FROM CONSTRUCTION OPERATIONS.

MAINTENANCE AND PROTECTION OF TRAFFIC (MPT) NOTES:

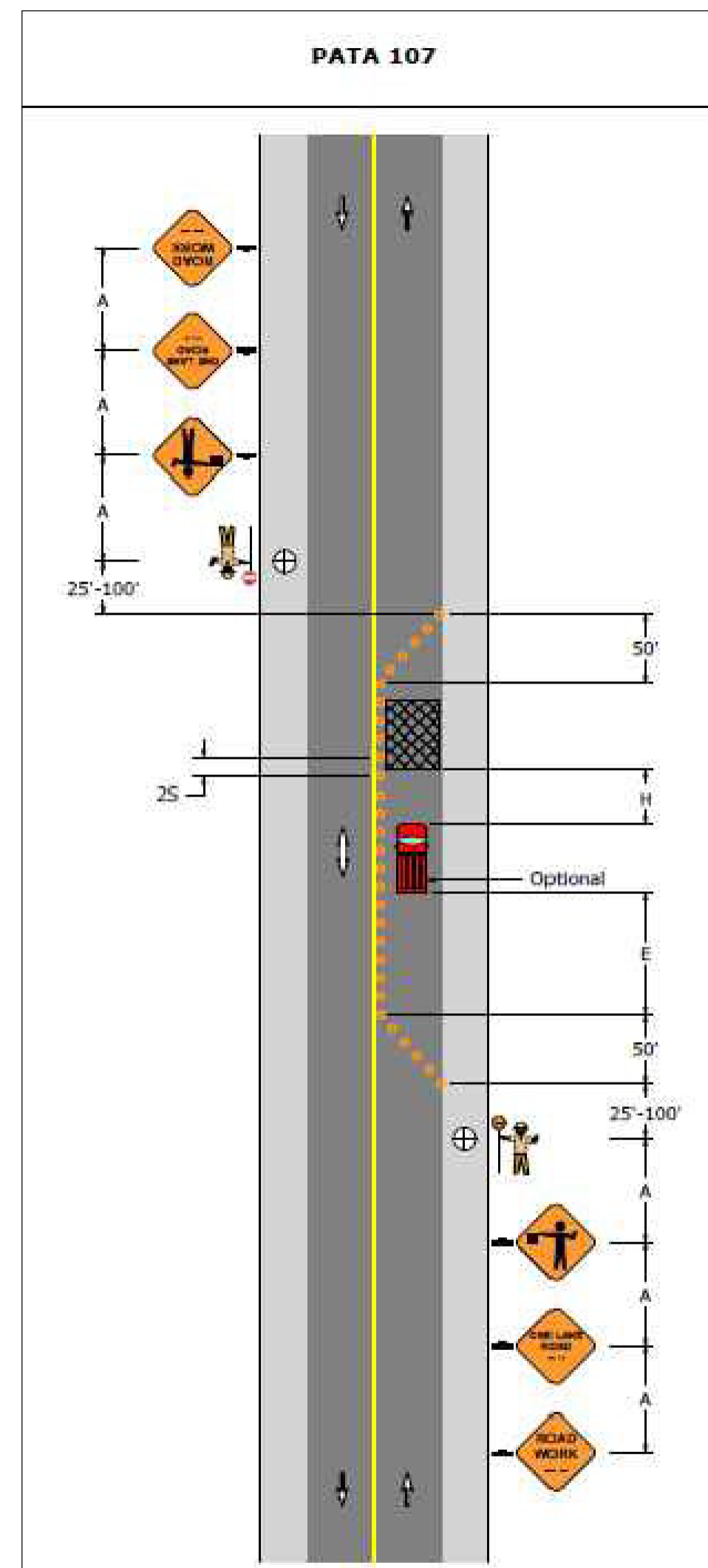
1. THIS WORK CONSISTS OF MAINTENANCE AND PROTECTION OF TRAFFIC AND THE PROTECTION OF THE PUBLIC WHEN APPROACHING AND DEPARTING THE CONSTRUCTION AREA AND WITHIN THE LIMITS OF CONSTRUCTION.
2. FURNISH, ERECT, PLACE AND MAINTAIN TRAFFIC CONTROL SIGNS AND DEVICES. MAINTAIN TRAFFIC DURING HOURS OF CONSTRUCTION AND ALL OTHER TIMES CONSISTENT WITH THE METHODS INDICATED ON THESE DRAWINGS AND THE FOLLOWING:
 - 2.1. PENNDOT PUBLICATION 35, APPROVED CONSTRUCTION MATERIALS (BULLETIN 15)
 - 2.2. PENNDOT PUBLICATION 46, TRAFFIC ENGINEERING MANUAL
 - 2.3. PENNDOT PUBLICATION 72M, STANDARDS FOR ROADWAY CONSTRUCTION
 - 2.4. PENNDOT PUBLICATION 111, PAVEMENT MARKINGS AND SIGNAGE STANDARDS
 - 2.5. PENNDOT PUBLICATION 212, OFFICIAL TRAFFIC CONTROL DEVICES
 - 2.6. PENNDOT PUBLICATION 213, TEMPORARY TRAFFIC CONTROL GUIDELINES
 - 2.7. PENNDOT PUBLICATION 236, HANDBOOK OF APPROVED DESIGNS
 - 2.8. PENNDOT PUBLICATION 408, SPECIFICATIONS
 - 2.9. MUTCO, CURRENT EDITION
3. REMOVE THESE DEVICES IMMEDIATELY AFTER UPON COMPLETION OF THE WORK, PENNDOT WILL REMOVE ANY TRAFFIC CONTROL DEVICES ERECTED BY DEPARTMENT FORCES.
4. PERMITTEE MUST ARRANGE FOR INSPECTION OF ALL DEVICES PRIOR TO START OF WORK.
5. COVER OR REMOVE ALL CONFLICTING SIGNS AND ERADICATE ALL CONFLICTING PAVEMENT MARKINGS.
6. MOUNT ALL LONG-TERM ADVANCED WARNING SIGNS ON TYPE III BARRICADES UNLESS OTHERWISE NOTED OR INSTRUCTED BY DISTRICT OFFICE.
7. ALL SIGNS AND DEVICES TO BE MAINTAINED IN NEW OR LIKE NEW CONDITION.
8. DRIVEWAYS WILL BE KEPT ACCESSIBLE AT ALL TIMES, LOCATE ALL SIGNS SO THAT SIGHT DISTANCE WILL NOT BE OBSTRUCTED AT DRIVEWAYS AND LOCAL ROADS.
9. ALL CHANNELIZING DEVICES, BARRICADES, AND SIGNS SHALL HAVE TYPE III OR BETTER PRISMATIC RETROREFLECTIVE SHEETING. SHEETING SHALL BE APPROVED AND LISTED IN PENNDOT PUBLICATION 35 (BULLETIN 15).
10. NO TRAFFIC RESTRICTIONS OR LANE CLOSURES ARE PERMITTED BETWEEN 6:00 AM AND 9:00 AM AND BETWEEN 3:00 PM AND 6:00 PM MONDAYS THROUGH FRIDAYS OR ON LEGAL HOLIDAYS AND WEEKENDS ASSOCIATED WITH LEGAL HOLIDAYS. ALL RESTRICTIONS AND CLOSURES ARE TO BE REMOVED BY NOON ON THE DAY PRIOR TO A LEGAL HOLIDAY.
11. PERMITTEE SHALL NOTIFY LOCAL EMERGENCY AUTHORITIES (E.G., POLICE, FIRE, MEDICAL,) AFFECTED BUSINESSES, SCHOOL DISTRICTS, THE GENERAL PUBLIC, THE DISTRICT PERMIT MANAGER AND THE DISTRICT AREAS COORDINATOR AT LEAST FOURTEEN (14) DAYS PRIOR TO SIGNIFICANT TRAFFIC IMPACTS (E.G., LATERAL WIDTH RESTRICTIONS LESS THAN 16 FEET, DETOURS).
12. MAINTENANCE OF AND PROTECTION OF TRAFFIC DURING CONSTRUCTION SHALL BE IN ACCORDANCE WITH THE APPLICABLE PATA DRAWINGS 107. IN THE CURRENT PENNDOT PUBLICATION 213, "TEMPORARY TRAFFIC CONTROL GUIDELINES."
13. DROP OFFS CREATED BY CONSTRUCTION OPERATIONS SHALL BE TREATED CONSISTENT WITH PUBLICATION 408, SECTION 901.31J).
14. REMOVE ALL SHORT TERM WORK ZONE TRAFFIC CONTROL SIGNING UPON COMPLETION OF THAT DAY'S WORK PERIOD.
15. RESTRICTING TRAFFIC FLOW WITHIN THE WORK AREA SHALL BE MINIMIZED TO PREVENT TRAFFIC CONGESTION AND UNSAFE TRAFFIC CONDITIONS.
16. NOTIFY THE LOCAL MUNICIPALITY WHERE SIGNALIZED INTERSECTIONS FALL WITHIN THE WORK ZONE. DO NOT FLAG A SIGNALIZED INTERSECTION WITHOUT THE MUNICIPALITY PLACING THE SIGNAL ON FLASH.
17. THE CONTRACTOR SHALL COMPLY WITH ACT 229 OF DECEMBER 2002 DURING CONSTRUCTION ACTIVITIES WITHIN THE PENNDOT RIGHT-OF-WAY.
18. ALL FLAGGERS TO TO WEAR YELLOW/GREEN ANSI II APPAREL AND LEGGINGS. ANSI III APPAREL IS REQUIRED DURING HOURS OF DARKNESS FOR ALL HIGHWAY WORKERS.

PROJECT NAME: WB301-RT3-SEC4-HANL

SHEET NAME: GENERAL NOTES

DATE: ----

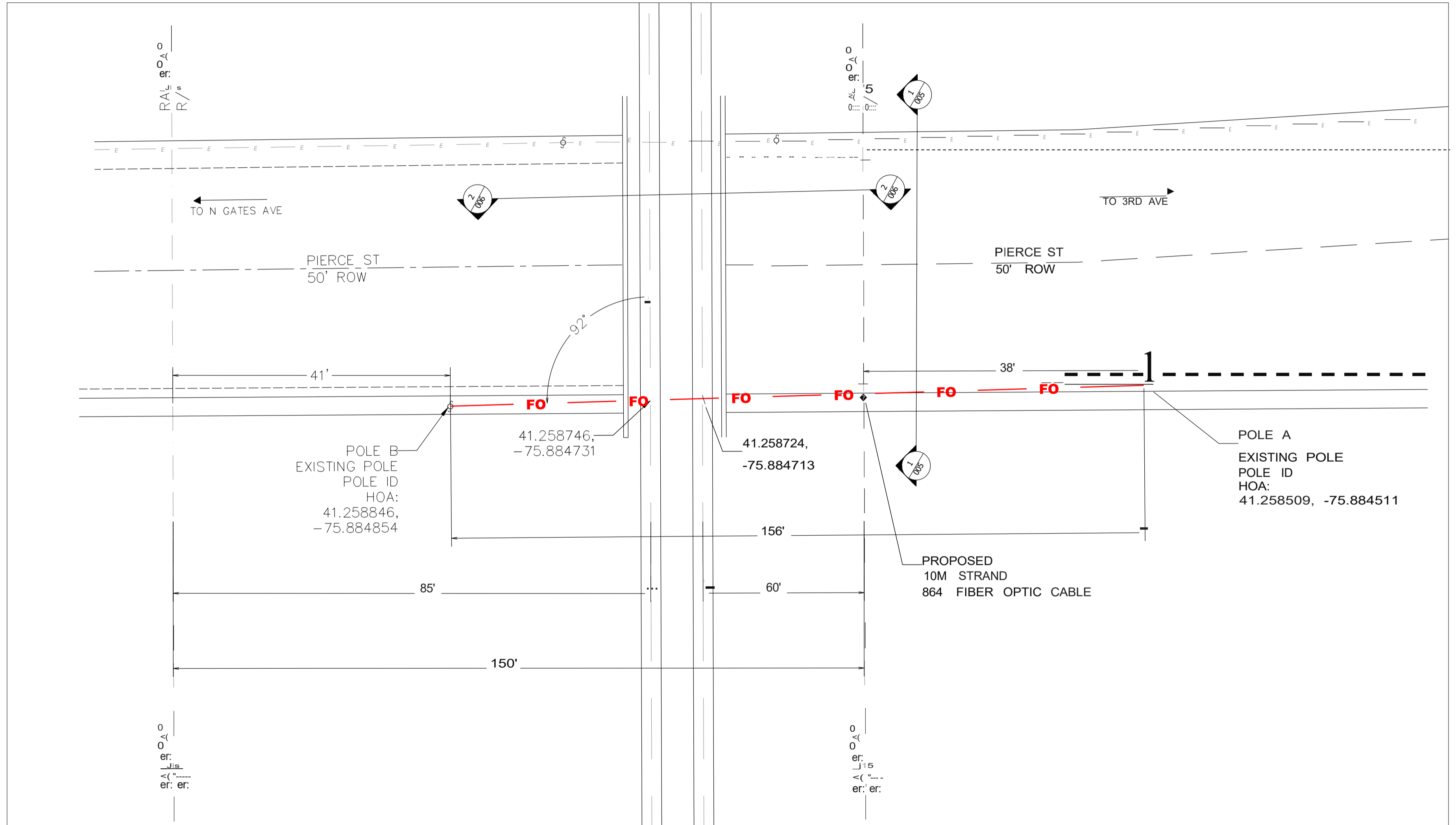
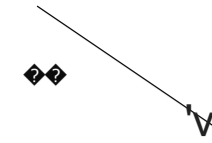
SHT NO. 002

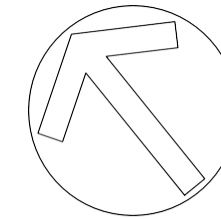


LINES	UTILITIES	SYMBOLS	-PROPOSED	ABBREVIATIONS	ABBREVIATIONS	ABBREVIATIONS	
----- FU ----- FU ----- FU -----	-PROPOSED		UTILITY POLE - CUSTOMER - OWNED	ABANDONED	ABO	LINEAR FOOT	LT
----- FODB ----- FODB ----- FODB -----	FIBER OPTIC - AERIAL		DOWN GUY - ANCHOR	ASPHALT	ASPH	LOW POINT OF SAG	LOP
----- FOU ----- FOU ----- FOU -----	FIBER OPTIC - DIRECT BURIED		DOWN GUY - SIDEWALK	AVENUE	AVE	MANHOLE	MH
----- FU(3) ----- FU(3) ----- FU(3) -----	FIBER OPTIC - PLACED IN EXISTING CONDUIT		HANDHOLE - FIBER OPTIC	BEARING	BRG	MILES PER HOUR	MPH
----- >> ----- >> ----- >> ----- >> -----	FIBER OPTIC - SLACK SPAN		CORE BORE, UTILITY IDENTIFICATION	BENCH MARK	BM	MONUMENT	MON
-----)) -----)) -----)) -----)) -----	FIBER OPTIC - OVERHEAD GUY		EXCAVATION	BITUMINOUS	BIT	OFFSET	OFF
----- COND ----- COND ----- COND -----	CONDUIT		-EXISTING	BLACK	BLK	ORANGE	ORN
----- CTV ----- CTV ----- CTV -----	CABLE TV - AERIAL		UTILITY POLE	BOULEVARD	BLVD	OUTSIDE DIAMETER	OD
----- CTVU ----- CTVU ----- CTVU -----	CABLE TV - UNDERGROUND		HANDHOLE - TELEPHONE	BRIDGE OCCUPANCY LICENSE	BOL	PAVEMENT	PAV'T
----- E ----- E ----- E -----	ELECTRIC- AERIAL		HANDHOLE - CABLE TV	CAST IRON PIPE	CIP	PERMANENT	PERM
----- EU ----- EU ----- EU -----	ELECTRIC- UNDERGROUND		HANDHOLE - ELECTRIC	CENTERLINE	€	POINT	PT
----- T ----- T ----- T -----	TELEPHONE - AERIAL		HANDHOLE - UNKNOWN	CONCRETE PIPE	CP	POWER POLE	PP
----- TU ----- TU ----- TU -----	TELEPHONE - UNDERGROUND		STORM WATER GRATE	CONDUIT	COND	PROJECT	PROJ
----- W ----- W ----- W -----	WATER		MANHOLE - TELEPHONE	CONTROL POINT	CTP	PROPERTY LINE	PL
----- SS ----- SS ----- SS -----	SANITARY SEWER		MANHOLE - CABLE TV	COORDINATE	COORD	RAILWAY	RW
----- SW ----- SW ----- SW -----	STORM WATER		MANHOLE - ELECTRIC	CORRUGATED METAL PIPE	CMP	RAILROAD	RR
----- G ----- G ----- G -----	GAS		MANHOLE - SANITATION	COUNTY	CO	REINFORCED CONCRETE PIPE	RCP
-----	OTHER		MANHOLE - WATER	DEGREE	DEG OR	REVISION	REV
-----	RIGHT-OF-WAY		MANHOLE - UNKNOWN	DIAMETER	DIA OR φ	RIGHT-OF-WAY	R/W
-----	CENTER LINE OF ROAD		METER/VALVE - GAS	DRIVE	DR	ROAD	RD
-----	EDGE OF PAVEMENT		FIRE HYDRANT	EDGE OF CONCRETE	EC	ROUTE	RTE
-----	WATER WAY		TRAFFIC SIGNAL	EDGE OF PAVEMENT	EOP	SANITARY SEWER	SANS
-----	GUIDE RAIL		TRAFFIC SIGN	ELEVATION	ELEV	SEGMENT	SEG
-----	MUNICIPAL BOUNDARY		RAILROAD CROSSING - SIGN	EXISTING	EXIST	SHEET	SHT
			RAILROAD CROSSING - SIGNAL	FEET	FT OR	SHOULDER	SHLDR
			RAILROAD CROSSING - GATE	FIBER OPTIC	FO	SIDEWALK	SDWK
			BENCHMARK	FIBER OPTIC CABLE	FOC	SOUTHERN YELLOW PINE	SYP
			CULVERT	FIGURE	FIG	STANDARD	STD
			BRIDGE	FINISHED GRADE	FG	STATE ROUTE	SR
				FIRE HYDRANT	FH	STATION	STA
				FOOT	FT OR	STREET	ST
				GENERAL	GENL	STEEL	STL
				GUIDE RAIL	GR	SUBSURFACE UTILITY ENGINEERING	SUE
				HANDHOLE	HH	TELEPHONE POLE	TP
				HEIGHT OF ATTACHMENT	HOA	TEMPORARY	TEMP
				HIGHWAY	HWY	TEST PIT	TP
				HIGHWAY OCCUPANCY PERMIT	HOP	TOP OF CURB	TC
				HORIZONTAL	HOR	TOP OF RAIL	TR
				HORIZONTAL DIRECTIONAL DRILL	HOD	TYPICAL	TYP
				INCH	IN OR "	VARIABLE	VAR
				INSIDE DIAMETER	ID	VERTICAL	VERT
				IRON PIPE	IP	WALK	WK
				LENGTH	LGTH	WORK ZONE TRAFFIC CONTROL	WZTC
				LIMITED ACCESS	LA		

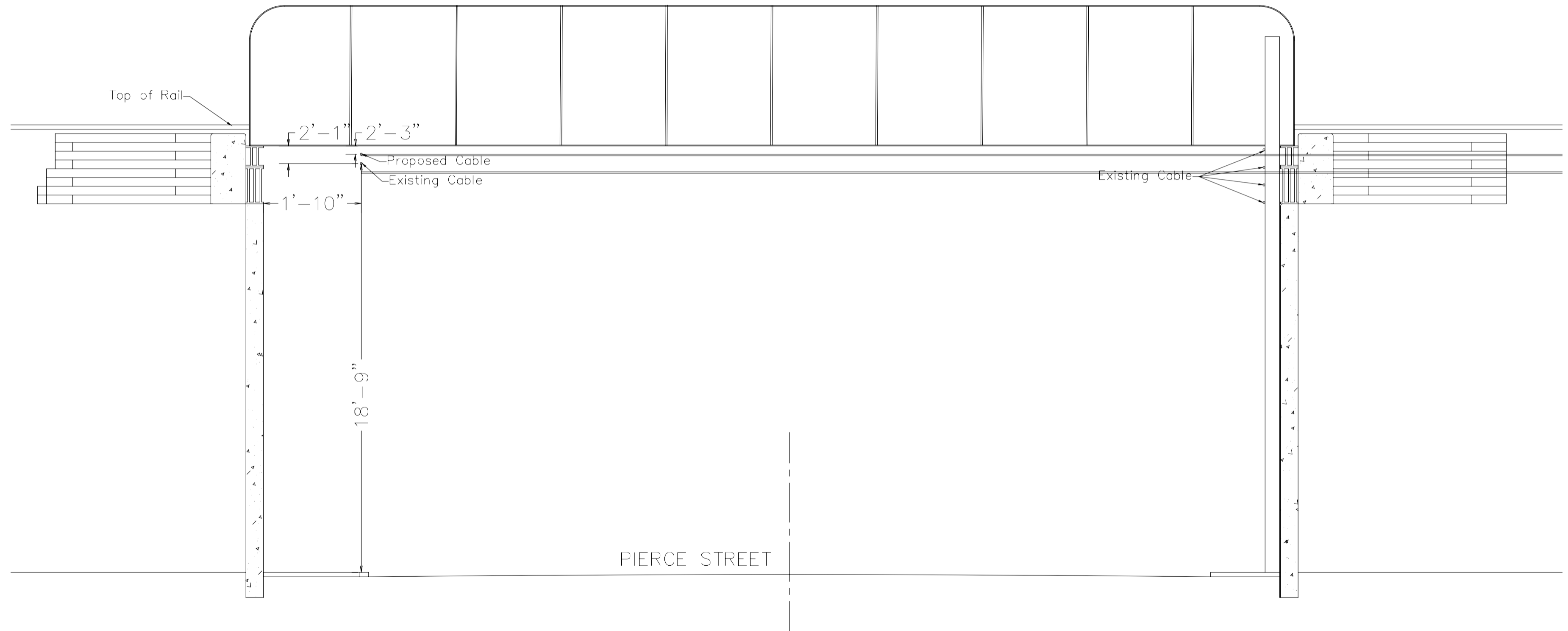
LOCATION DATA				
DISTRICT	COUNTY	ROUTE	SEGMENT	OFFSET
4	40	ROAD_NUMBER	0010	1186
PROJECT NAME: WB301-RT3-SEC4-HANL				
ORIGINAL DATE:				
DRAWING NAME: Plan View				
DRAWING SCALE:				

SHEET NO.
004 OF 11

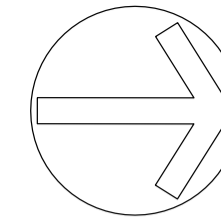




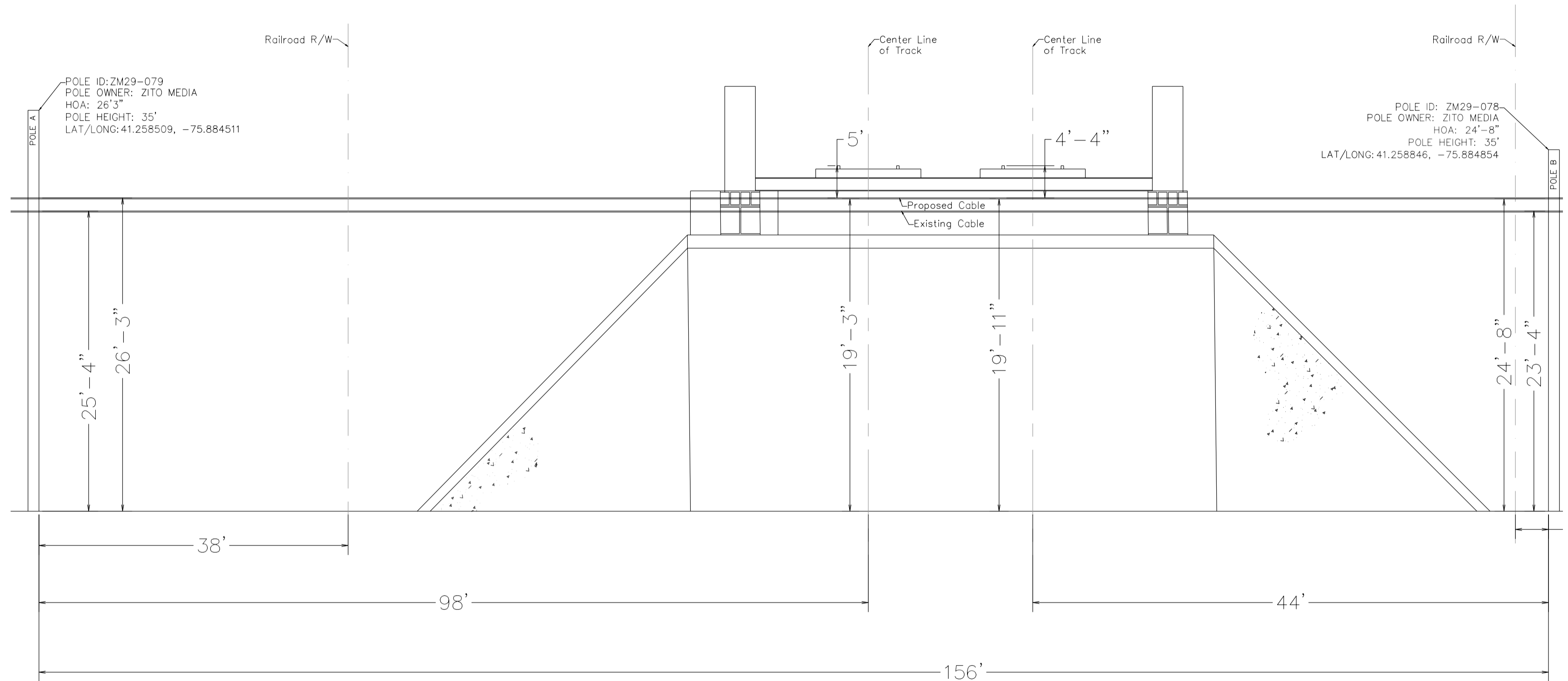
LOCATION DATA					SHEET NO.
DISTRICT	COUNTY	ROUTE	SEGMENT	OFFSET	
4	40	ROAD_NUMBER	0010	1186	005 OF 11
PROJECT NAME: WB301-R13-SEC4-HANL					
ORIGINAL DATE: ----					
DRAWING NAME: Section View(s)					
DRAWING SCALE: 0 5 10 Feet					



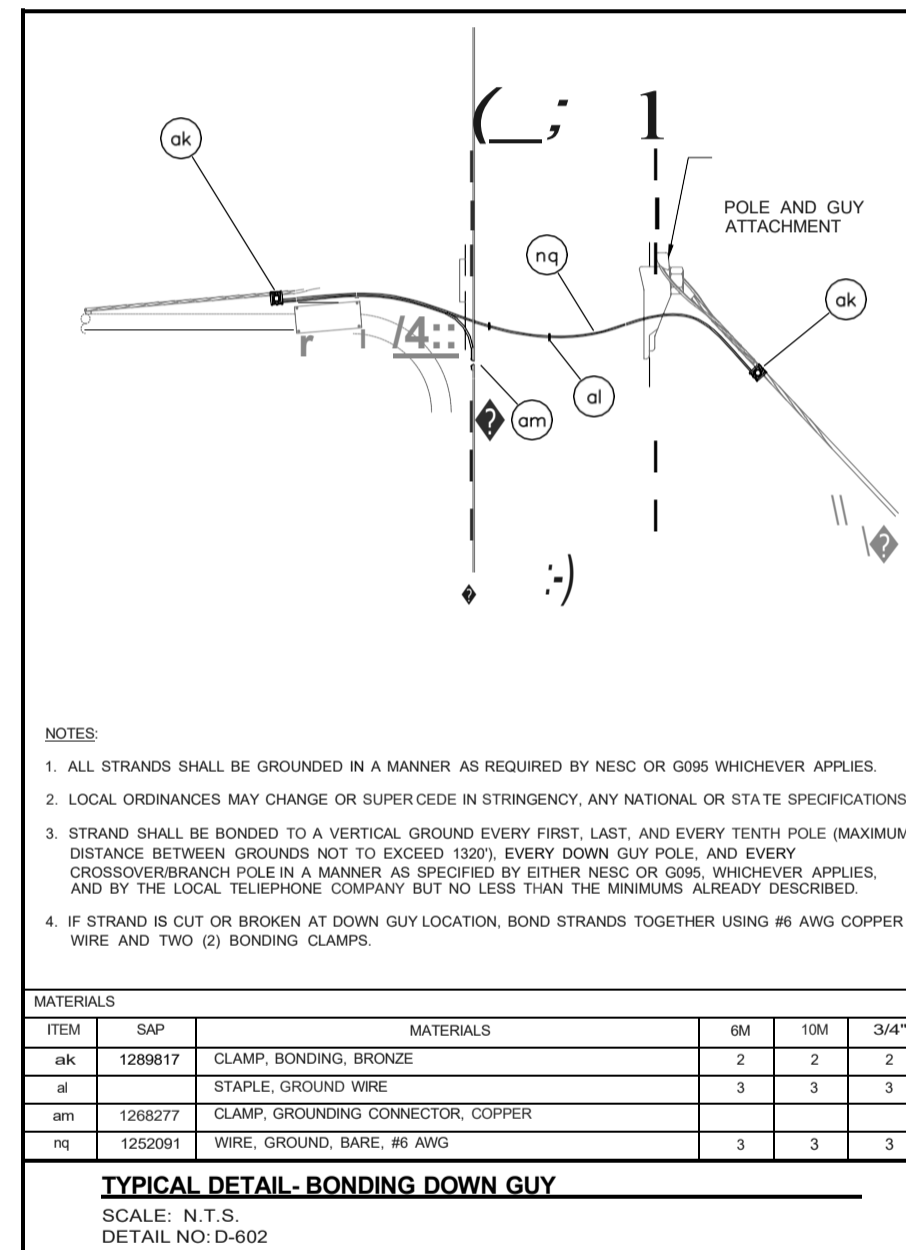
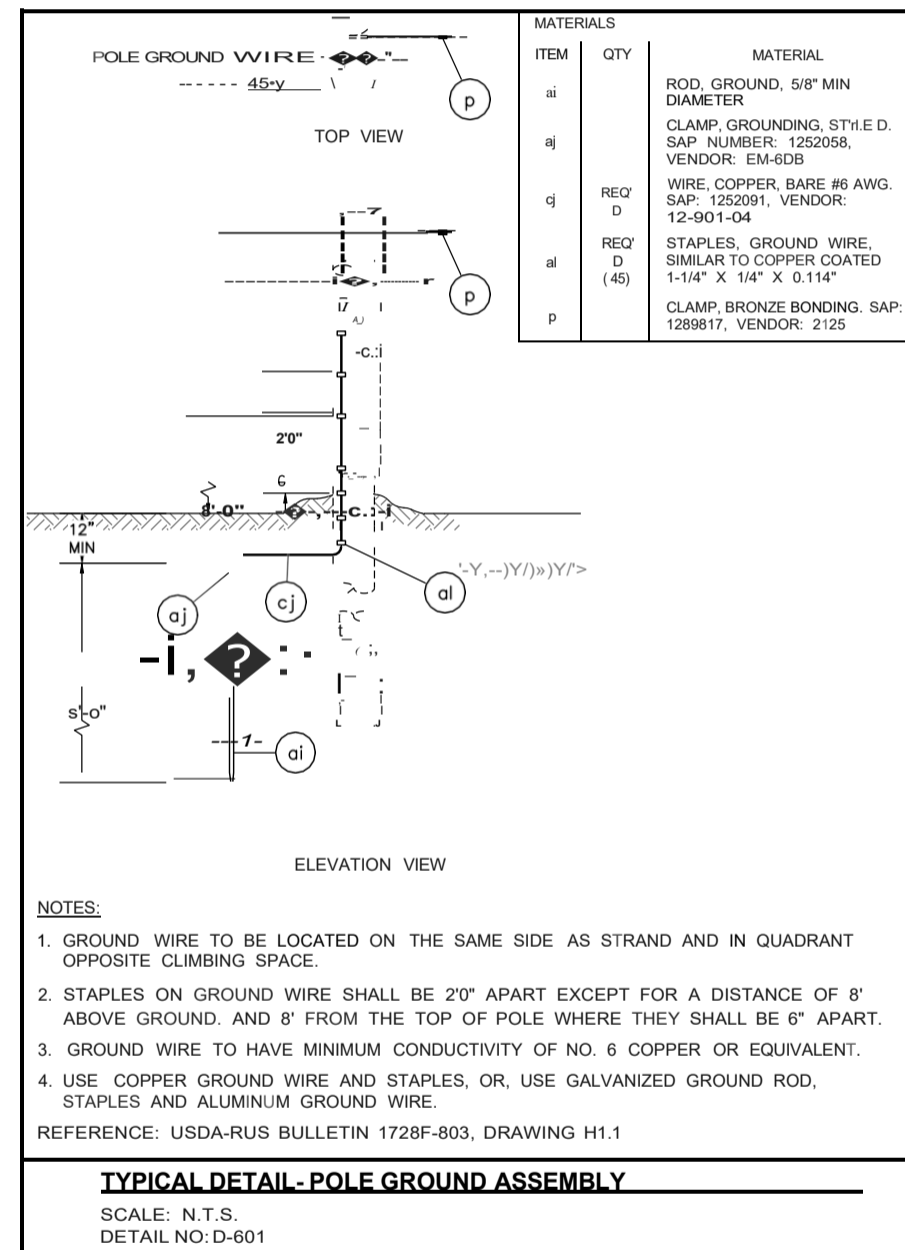
SECTION VIEW 1
FACING NORTH
SCALE: 1:3

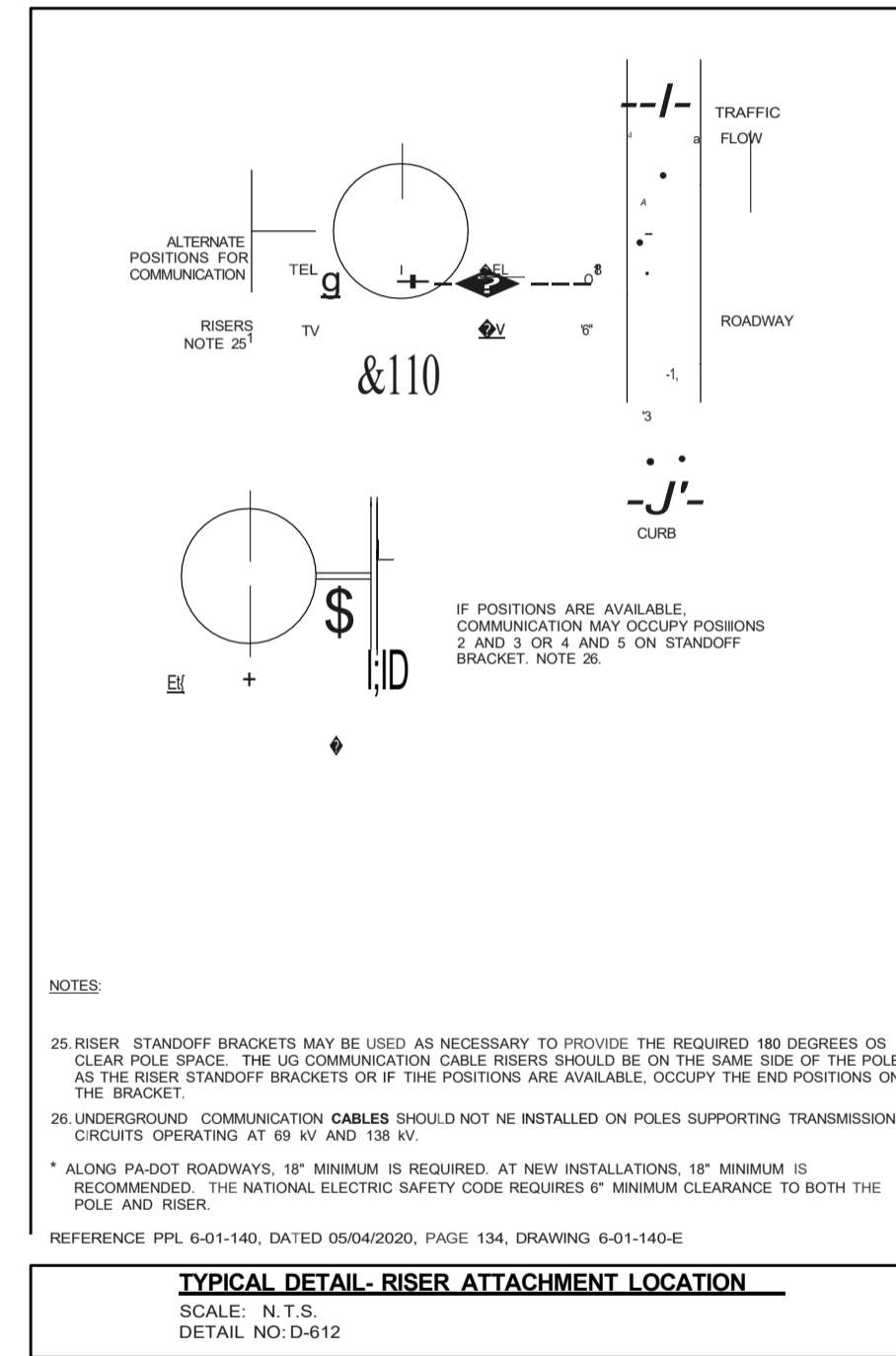
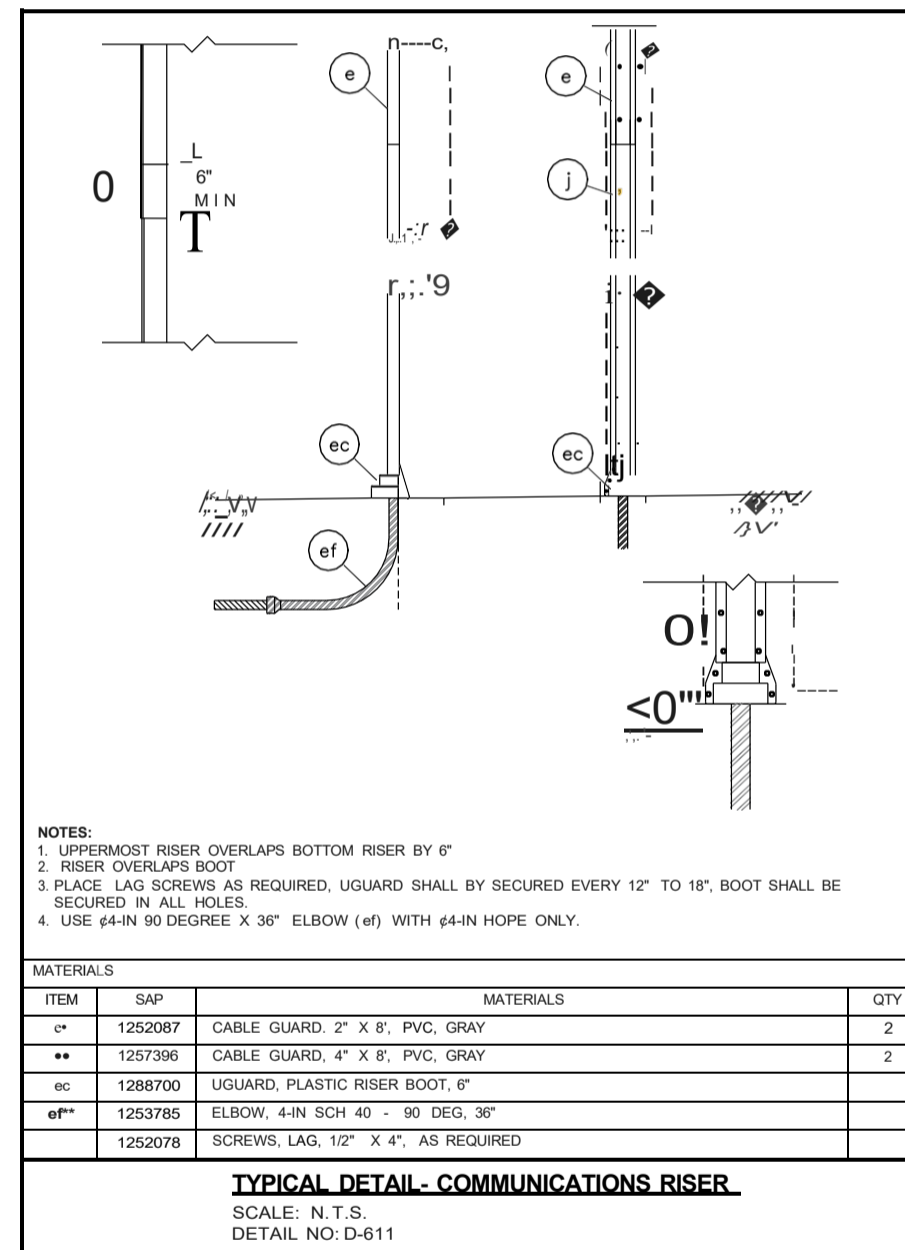


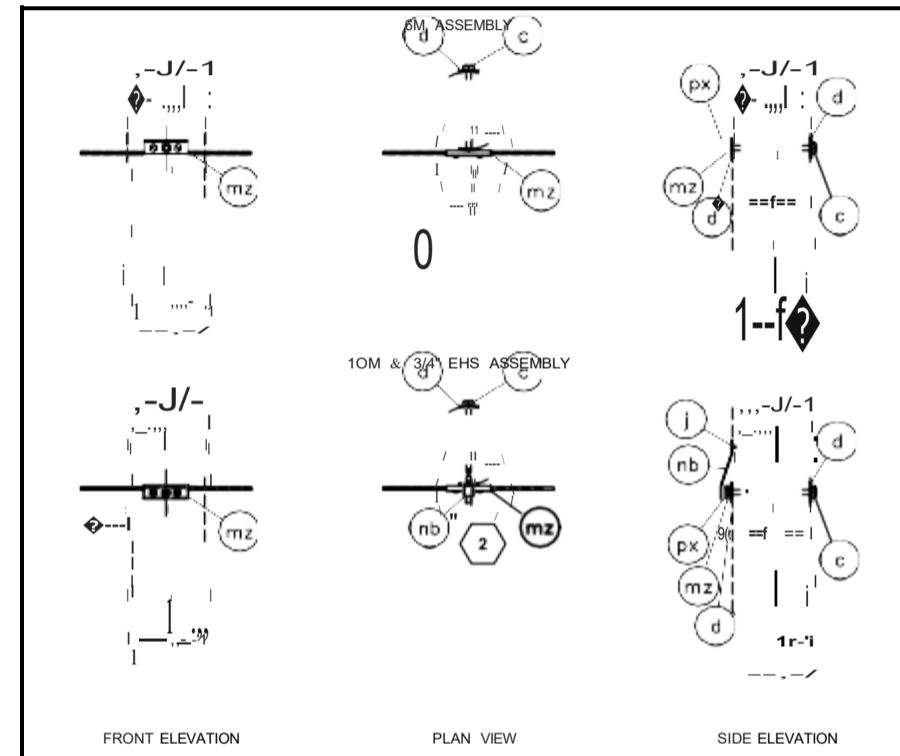
LOCATION DATA					SHEET NO.
DISTRICT	COUNTY	ROUTE	SEGMENT	OFFSET	
4	40	ROAD_NUMBER	0010	1186	006 OF 11
PROJECT NAME: WB301-RT3-SEC4-HANL					
ORIGINAL DATE: ----					
DRAWING NAME: Section View(s)					
DRAWING SCALE: Feet					



SECTION VIEW 2
FACING SOUTH WEST
SCALE: 1:4



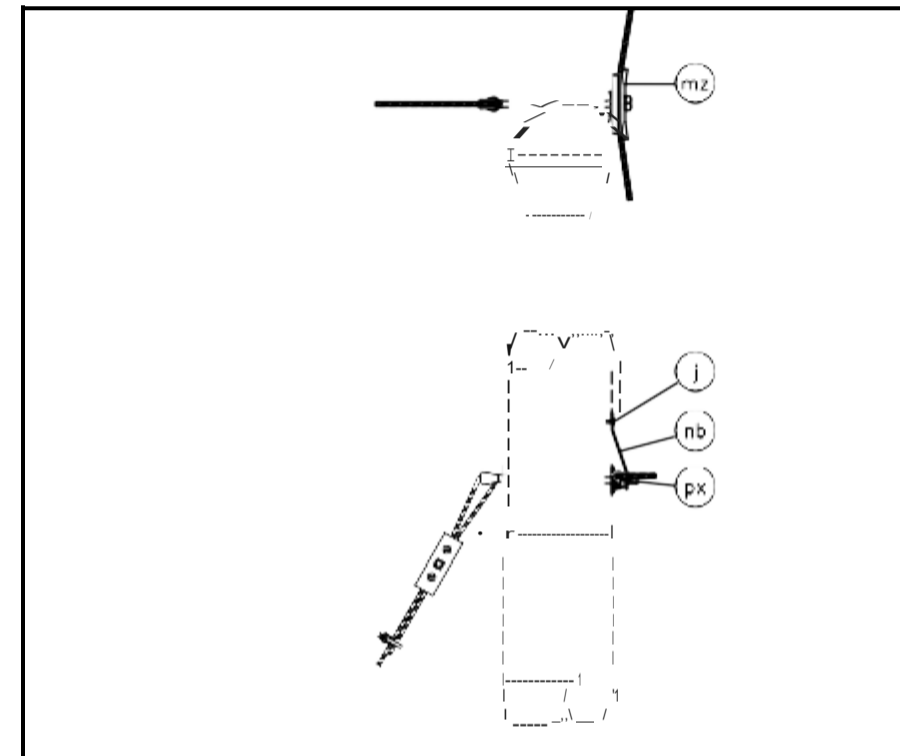




- NOTES:**
1. USE FOR TANGENT TO 15 DEGREES CONSTRUCTION
 2. BOLT ENDS MUST NOT PROJECT MORE THAN ONE INCH BEYOND THE NUT (PPL 06-01-140, RULE 4)

ITEM	SAP	MATERIALS	6M	10M	3/4"
c		BOLTS, MACHINE, 5/8" X REQUIRED LENGTH			
d	1252089	WASHERS, CURVED, 2-1/2" X 2-1/2" X 1/4", 11/16" HOLE	2	2	2
	1252078	SCREWS, LAG, 1/2" X 4"			
px		NUTS, REGULAR SQUARE, 5/8"			
mz	1252046	CLAMPS, CABLE, SUSPENSION			
nb		STRAPS, SUSPENSION CLAMP, REINFORCEMENT			

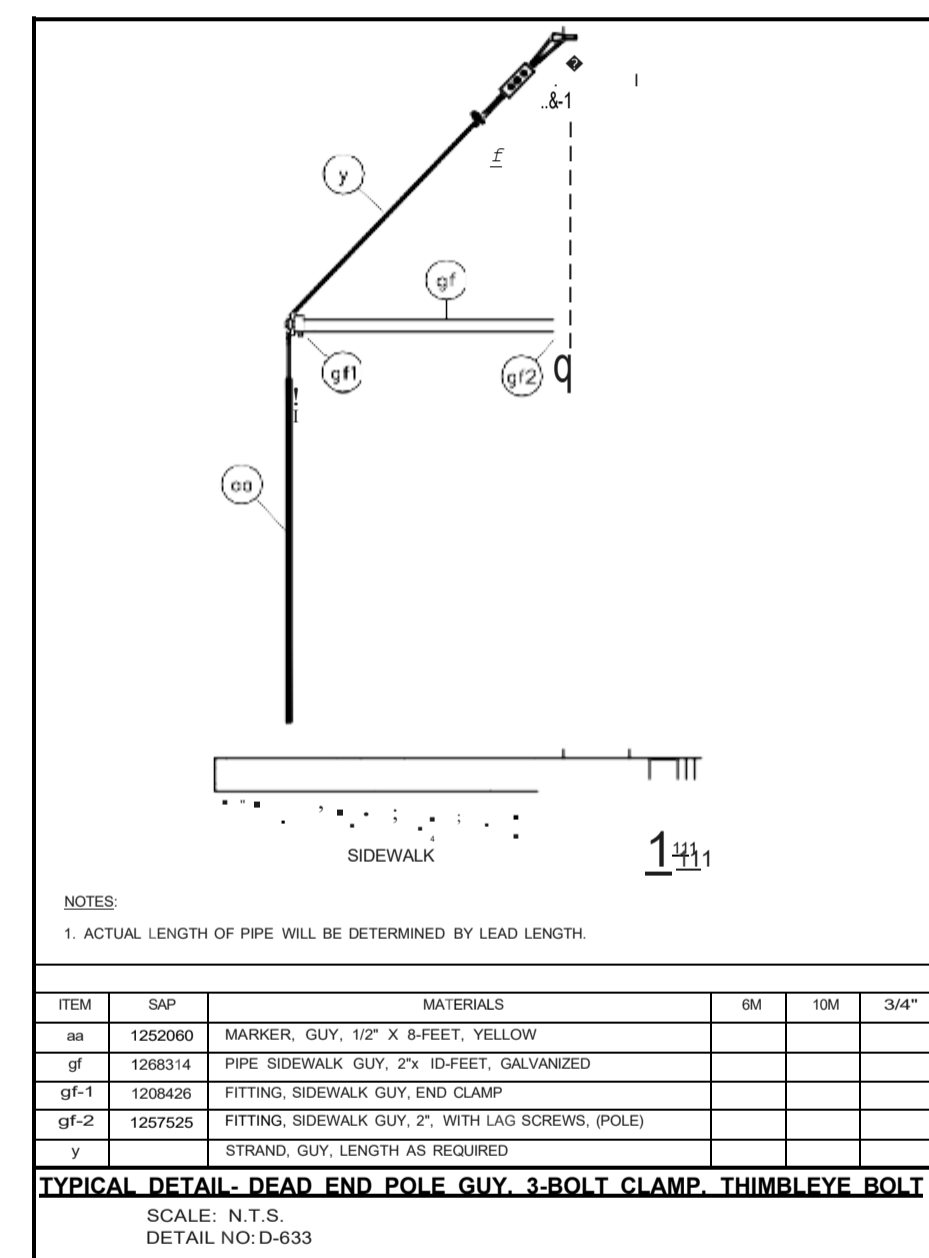
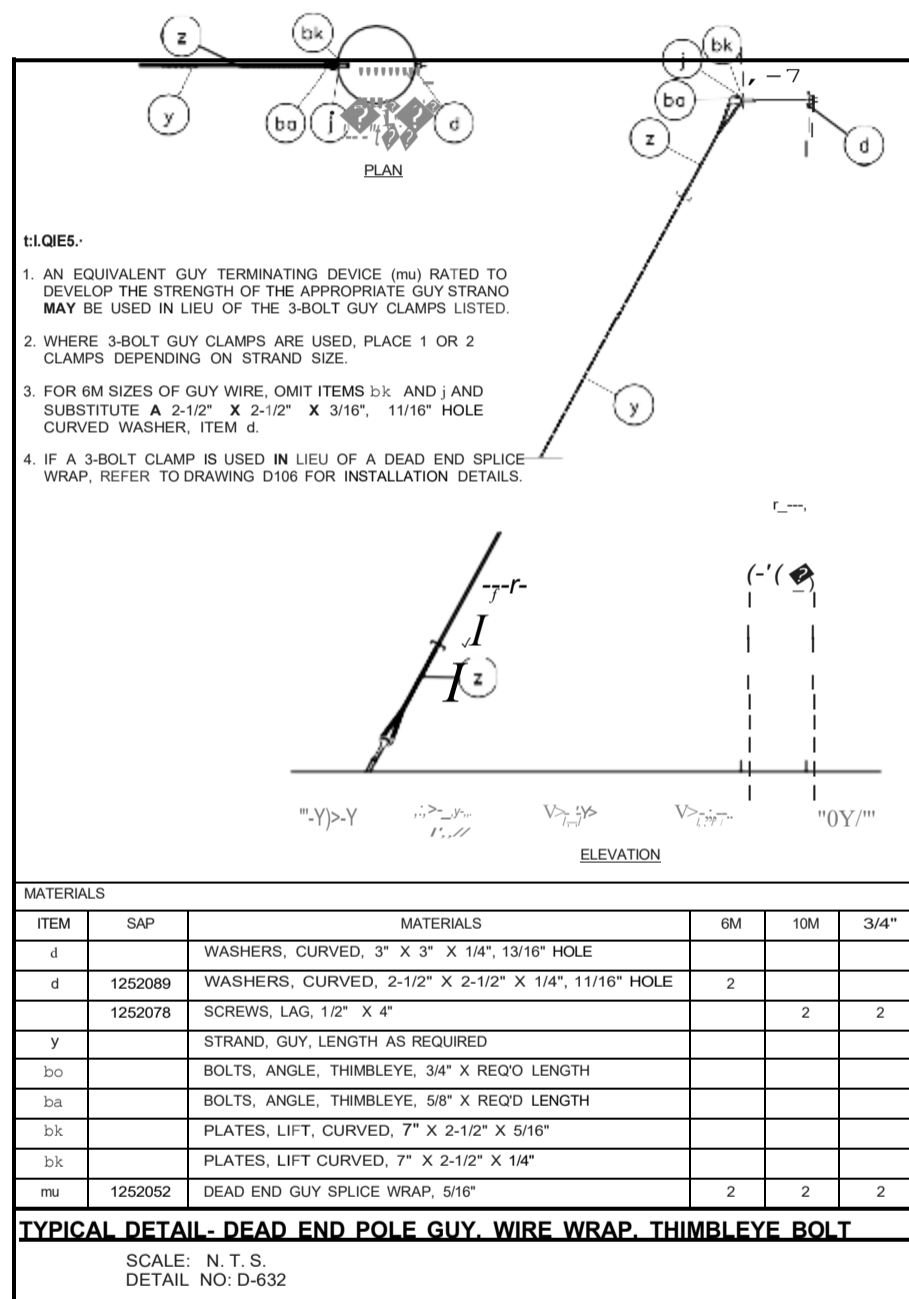
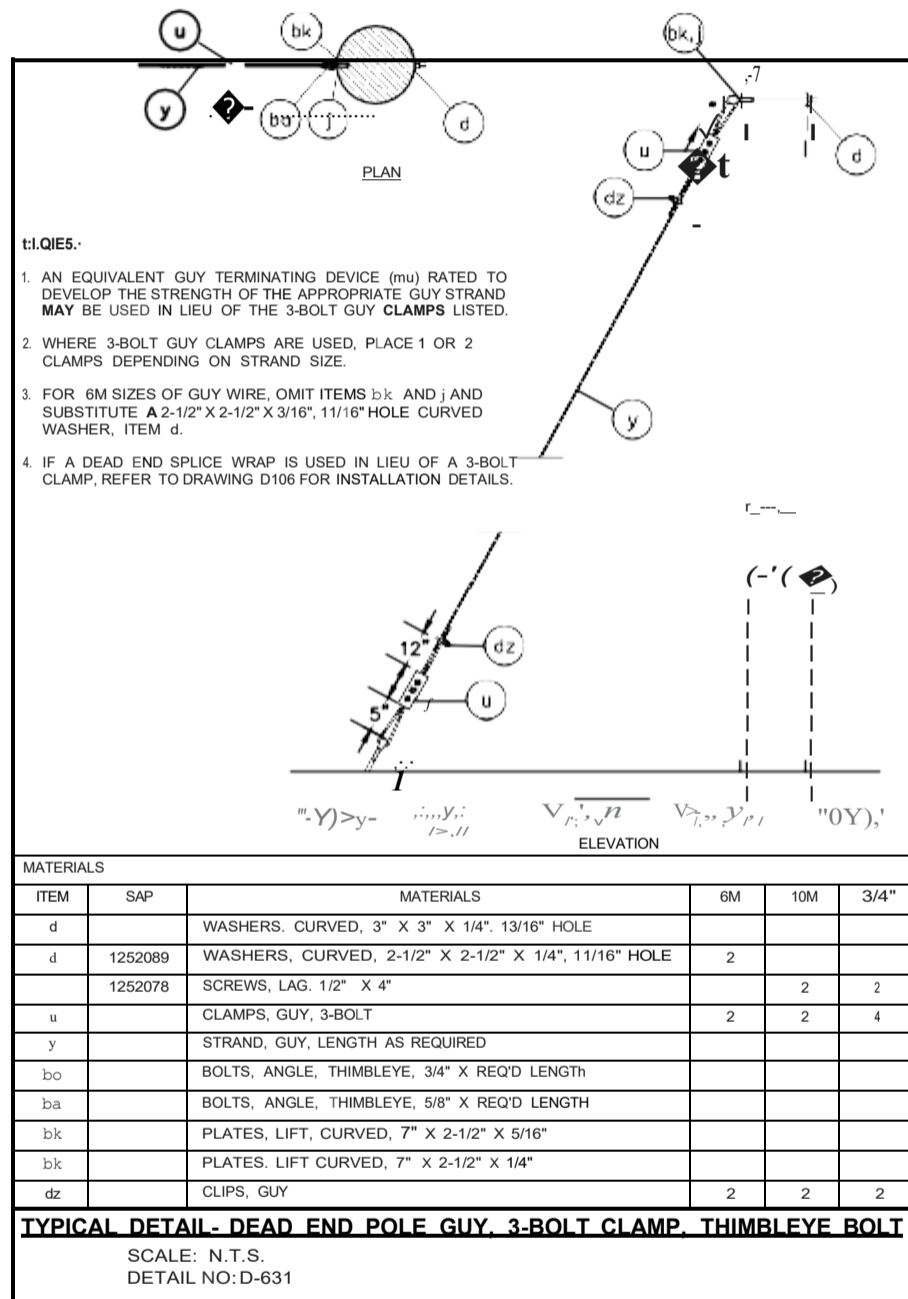
TYPICAL DETAIL - SUSPENSION STRAND MOUNTING (TANGENT)
 SCALE: N.T.S.
 DETAIL NO: D-621

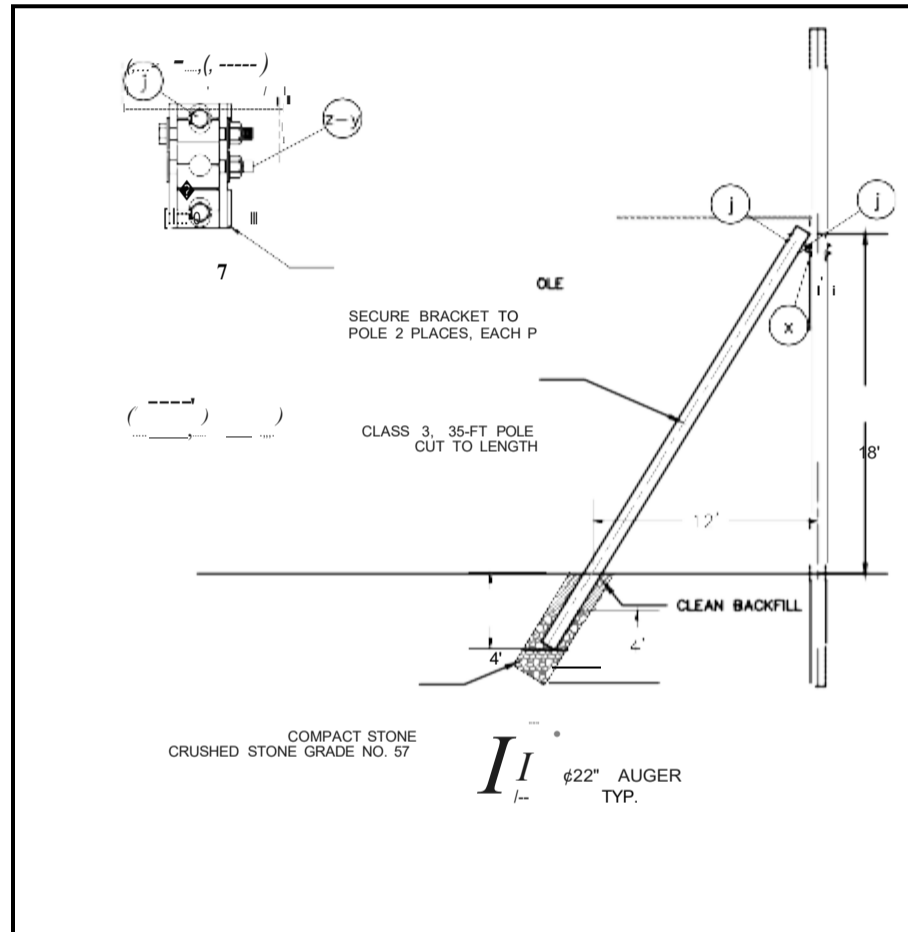


- NOTES:**
1. USE FOR CORNERS FROM 15 TO 60 DEGREES.
 2. SEE GUY ASSEMBLY FOR GUYING MATERIALS.

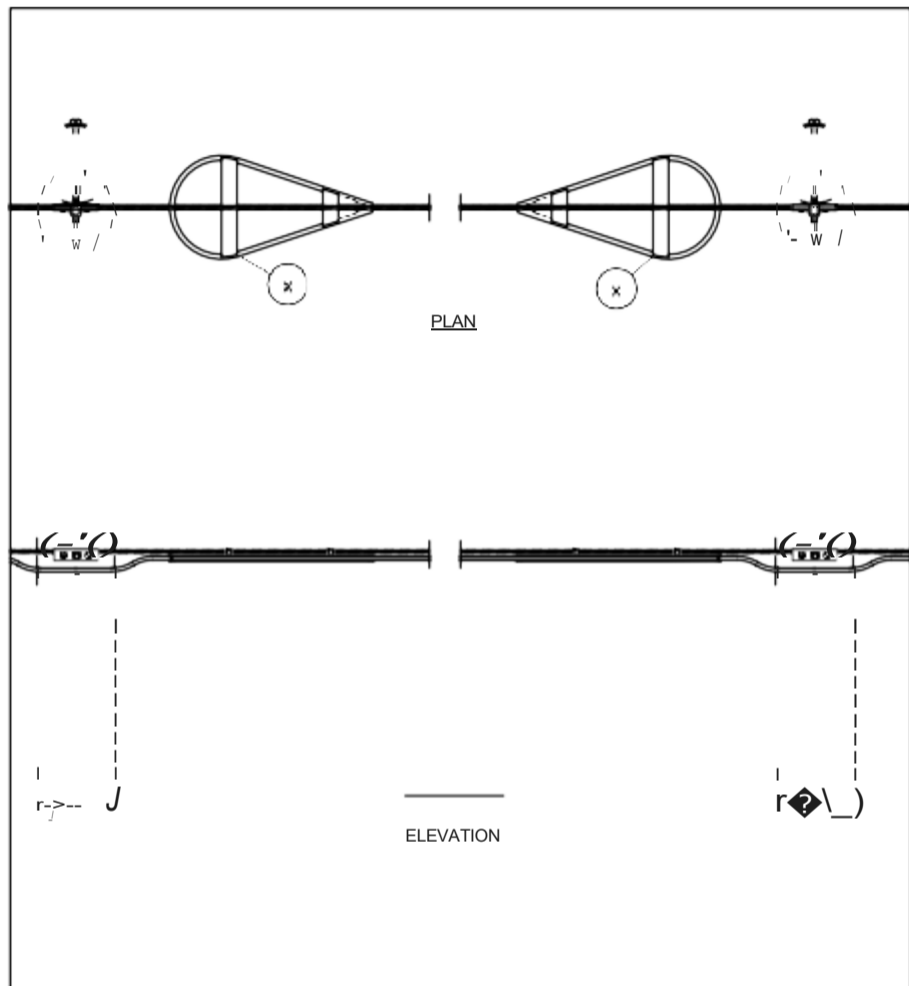
ITEM	SAP	MATERIALS	6M	10M	3/4"
	1252078	SCREWS, LAG, 1/2" X 4"			
px		NUTS, REGULAR SQUARE, 5/8"			
mz	1252045	CLAMPS, CABLE, CORNER SUSPENSION			
nb		STRAPS, SUSPENSION CLAMP, REINFORCEMENT			

TYPICAL DETAIL - SUSPENSION STRAND MOUNTING (CORNER)
 SCALE: N.T.S.
 DETAIL NO: D-622



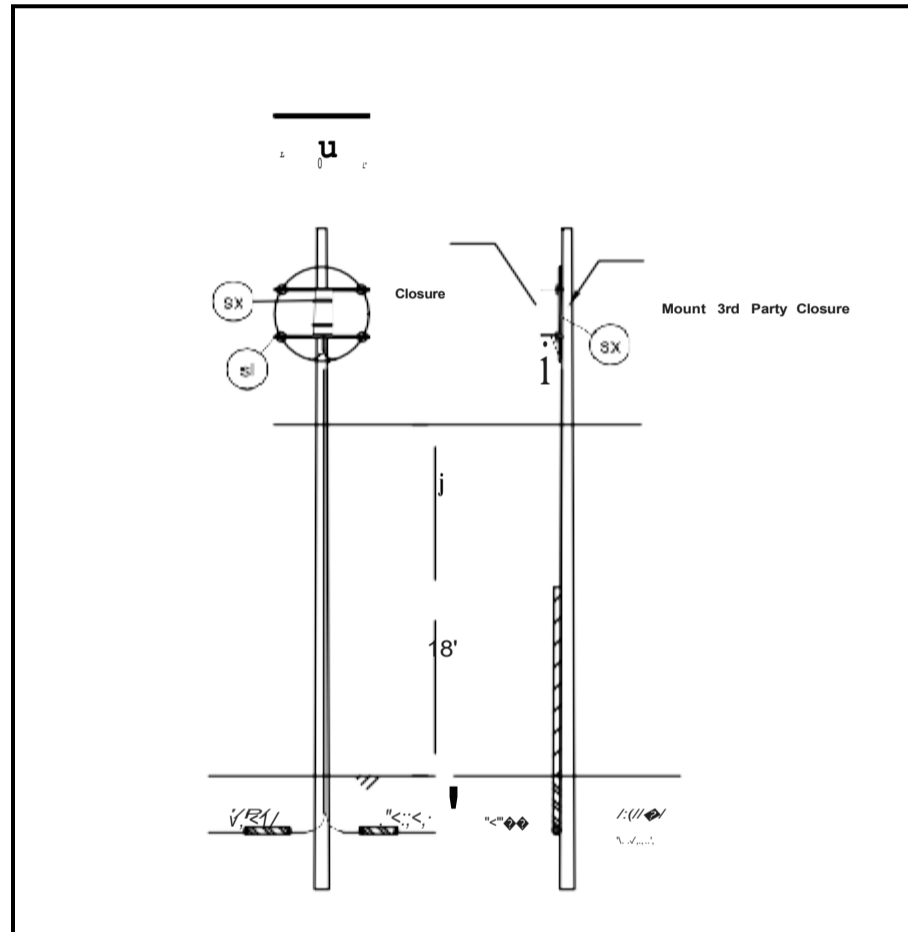


MATERIALS			
ITEMS	SAP	MATERIALS	QTY
x		POLE BRACE CONNECTOR BRACKET (MACLEAN POWER- PAX128)	
y		HEX SCREW, 3/4"-10 X 5-1/2", 3/4"-10 UNC HEX NUT	4
z		WASHERS, STRAIGHT, 1" X 3/4"	8
d	1252089	WASHERS, CURVED, 2-1/2" X 2-1/2" X 1/4", 11/16" HOLE	4
	1252078	SCREWS, LAG, 1/2" X 4"	4



NOTES:
 1. ALL AERIAL MOUNTED SLACK LOOPS SHALL BE MOUNTED IN SNOW SHOES.
 2. DISTANCE BETWEEN SNOW SHOES SHALL BE DETERMINED IN THE FIELD WITH SUFFICIENT DISTANCE BETWEEN SNOW SHOES TO MAINTAIN TENSION ON CABLE.

MATERIALS			
ITEMS	SAP	MATERIALS	QTY
x	1268275	SNOW SHOE, CABLE SLACK STORAGE, 30" (PAIR)	6M 10M 3/4"



MATERIALS			
ITEMS	SAP	MATERIALS	QTY
sl		8003569- DUAL LONG CROSSARMS WITH SPOOLS	
sx		BANDING STRAPS, OR CLOSURE MOUNTING KIT	

U. S. DOT CROSSING INVENTORY FORM

DEPARTMENT OF TRANSPORTATION

FEDERAL RAILROAD ADMINISTRATION

OMB No. 2130-0017

Instructions for the initial reporting of the following types of new or previously unreported crossings: For public highway-rail grade crossings, complete the entire inventory Form. For private highway-rail grade crossings, complete the Header, Parts I and II, and the Submission Information section. For public pathway grade crossings (including pedestrian station grade crossings), complete the Header, Parts I and II, and the Submission Information section. For Private pathway grade crossings, complete the Header, Part I, and the Submission Information section. For grade-separated highway-rail or pathway crossings (including pedestrian station crossings), complete the Header, Part I, and the Submission Information section. For changes to existing data, complete the Header, Part I Items 1-3, and the Submission Information section, in addition to the updated data fields. Note: For private crossings only, Part I Item 20 and Part III Item 2.K, are required unless otherwise noted. An asterisk* denotes an optional field.

A. Revision Date (MM/DD/YYYY) 07/04/2025
B. Reporting Agency (ii) Railroad
C. Reason for Update (Select only one)
D. DOT Crossing Inventory Number 859635E

Part I: Location and Classification Information

1. Primary Operating Railroad Norfolk Southern Railway Company (NS)
2. State PENNSYLVANIA
3. County LUZERNE
4. City/ Municipality KINGSTON
5. Street/Road Name & Block Number PIERCE STREET
6. Highway Type & No. LS

7. Do Other Railroads Operate a Separate Track at Crossing?
8. Do Other Railroads Operate Over Your Track at Crossing?

9. Railroad Division or Region KEYSTONE
10. Railroad Subdivision or District D&H SOUTH
11. Branch of Line Name SUNBURY LINE
12. RR Milepost 0688.750

13. Line Segment BR325
14. Nearest RR Timetable Station HUDSON
15. Parent RR (if applicable) N/A
16. Crossing Owner (if applicable) N/A

17. Crossing Type Public
18. Crossing Purpose Station, Ped.
19. Crossing Position RR Under
20. Public Access (if Private Crossing) No
21. Type of Train Intercity Passenger
22. Average Passenger Train Count Per Day Less Than One Per Day

23. Type of Land Use Open Space
24. Is there an Adjacent Crossing with a Separate Number? No
25. Quiet Zone (FRA provided) No

26. HSR Corridor ID N/A
27. Latitude in decimal degrees 41.2587613
28. Longitude in decimal degrees -75.8846305
29. Lat/Long Source Actual

30.A. Railroad Use
30.B. Railroad Use
30.C. Railroad Use
30.D. Railroad Use
31.A. State Use
31.B. State Use
31.C. State Use
31.D. State Use
32.A. Narrative (Railroad Use)
32.B. Narrative (State Use) OLD L.R. 40116

33. Emergency Notification Telephone No. (posted) 800-946-4744
34. Railroad Contact (Telephone No.) 800-946-4744
35. State Contact (Telephone No.) 717-772-3079

Part II: Railroad Information

1. Estimated Number of Daily Train Movements
1.A. Total Day Thru Trains (6AM to 6PM) 1
1.B. Total Night Thru Trains (6PM to 6AM) 1
1.C. Total Switching Trains 0
1.D. Total Transit Trains 0
1.E. Check if Less Than One Movement Per Day How many trains per week? No

2. Year of Train Count Data (YYYY) 2025
3. Speed of Train at Crossing
3.A. Maximum Timetable Speed (mph) 25
3.B. Typical Speed Range Over Crossing (mph) From 15 to 25

4. Type and Count of Tracks
Main 1 Siding 0 Yard 0 Transit 0 Industry 0

5. Train Detection (Main Track only)
6. Is Track Signaled? No
7.A. Event Recorder No
7.B. Remote Health Monitoring No

U.S. DOT CROSSING INVENTORY FORM

A. Revision Date (MM/DD/YYYY) 07/04/2025
pAGE2
D. Crossing Inventory Number (7 char.) 859635E

Part III: Highway or Pathway Traffic Control Device Information

1. Are there Signs or Signals? No
2. Types of Passive Traffic Control Devices associated with the Crossing
2.A. Crossbuck Assemblies (count) 0
2.B. STOP Signs (Rt-1) (count) 0
2.C. YIELD Signs (Rt-2) (count) 0
2.D. Advance Warning Signs (Check all that apply; include count) None

2.E. Low Ground Clearance Sign (W10-5) Yes
2.F. Pavement Markings Stop Lines, Dynamic Envelope, RR Xing Symbols
2.G. Channelization Devices/Medians All Approaches, Median
2.H. EXEMPT Sign (R15-3) No
2.I. ENS Sign (f-13) Displayed No

2.J. Other MUTCD Signs No
2.K. Private Crossing Signs (if private) No
2.L. LED Enhanced Signs (List types)

3. Types of Train Activated Warning Devices at the Grade Crossing (specify count of each device for all that apply)
3.A. Gate Arms No
3.B. Gate Configuration No
3.C. Cantilevered (or Bridged) Flashing Light Structures (count) 0
3.D. Mast Mounted Flashing Lights (count of masts) 0
3.E. Total Count of Flashing Light Pairs 0

3.F. Installation Date of Current Active Warning Devices (MM/YYYY) Not Required
3.G. Wayside Horn No
3.H. Highway Traffic Signals Controlling Crossing No
3.I. Bells (count) 0

3.J. Non-Train Active Warning No
3.K. Other Flashing Lights or Warning Devices Count 0
4.A. Does nearby Hwy Intersection have Traffic Signals? No
4.B. Hwy Traffic Signal Interconnection No
4.C. Hwy Traffic Signal Preemption No
4. Highway Traffic Pre-Signals No
6. Highway Monitoring Devices (Check all that apply) No

Part IV: Physical Characteristics

1. Traffic Lanes Crossing Railroad Paved? No
2. Is Roadway/Pathway Paved? No
3. Does Track Run Down a Street? No
4. Is Crossing Illuminated? (Street lights within approx. 50feet from nearest rail) No

5. Crossing Surface (on Main Track, multiple types allowed) Installation Date* (MM/YYYY) Width Length
D 1 Timber D 2 Asphalt D 3 Asphalt and Timber D 4 Concrete D 5 Concrete and Rubber D 6 Rubber D 7 Metal D 8 Unconsolidated D 9 Composite D 10 Other (specify)

6. Intersecting Roadway within 500 feet? No
7. Smallest Crossing Angle 0-29, 30-59, 60-90
8. Is Commercial Power Available? No

Part V: Public Highway Information

1. Highway System (01) Interstate Highway System, (02) Other Nat Hwy System (NHS), (03) Federal Aid, Not NHS, (08) Non-Federal Aid
2. Functional Classification of Road at Crossing (0) Rural, (1) Urban, (5) Major Collector, (6) Minor Collector, (7) Local
3. Is Crossing on State Highway System? No
4. Highway Speed Limit System? 0 MPH, Posted, Statutory
5. Linear Referencing System (LRS Route ID)
6. LRS Milepost *

7. Annual Average Daily Traffic (AADT) Year 2014 AADT 9428
8. Estimated Percent Trucks 1 %
9. Regularly Used by School Buses? No
10. Emergency Services Route No

Submission Information - This information is used for administrative purposes and is not available on the public website.

Submitted by Organization Phone Date

Public reporting burden for this information collection is estimated to average 30 minutes per response, including the time for reviewing instructions, searching existing data sources, gathering and maintaining the data needed and completing and reviewing the collection of information. According to the Paperwork Reduction Act of 1995, a federal agency may not conduct or sponsor, and a person is not required to, nor shall a person be subject to a penalty for failure to comply with, a collection of information unless it displays a currently valid OMB control number. The valid OMB control number for information collection is 2130-0017. Send comments regarding this burden estimate or any other aspect of this collection, including for reducing this burden to: Information Collection Officer, Federal Railroad Administration, 1200 New Jersey Ave. SE, MS-25 Washington, DC 20590.