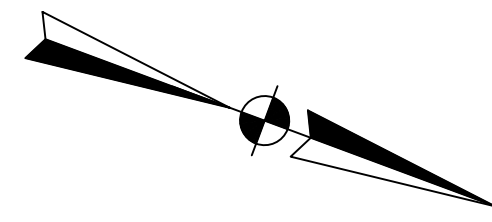


LATITUDE: N40° 15' 26.64" LONGITUDE: W76° 51' 21.74"
 DAUPHIN COUNTY, PENNSYLVANIA (M.P. 110.93)

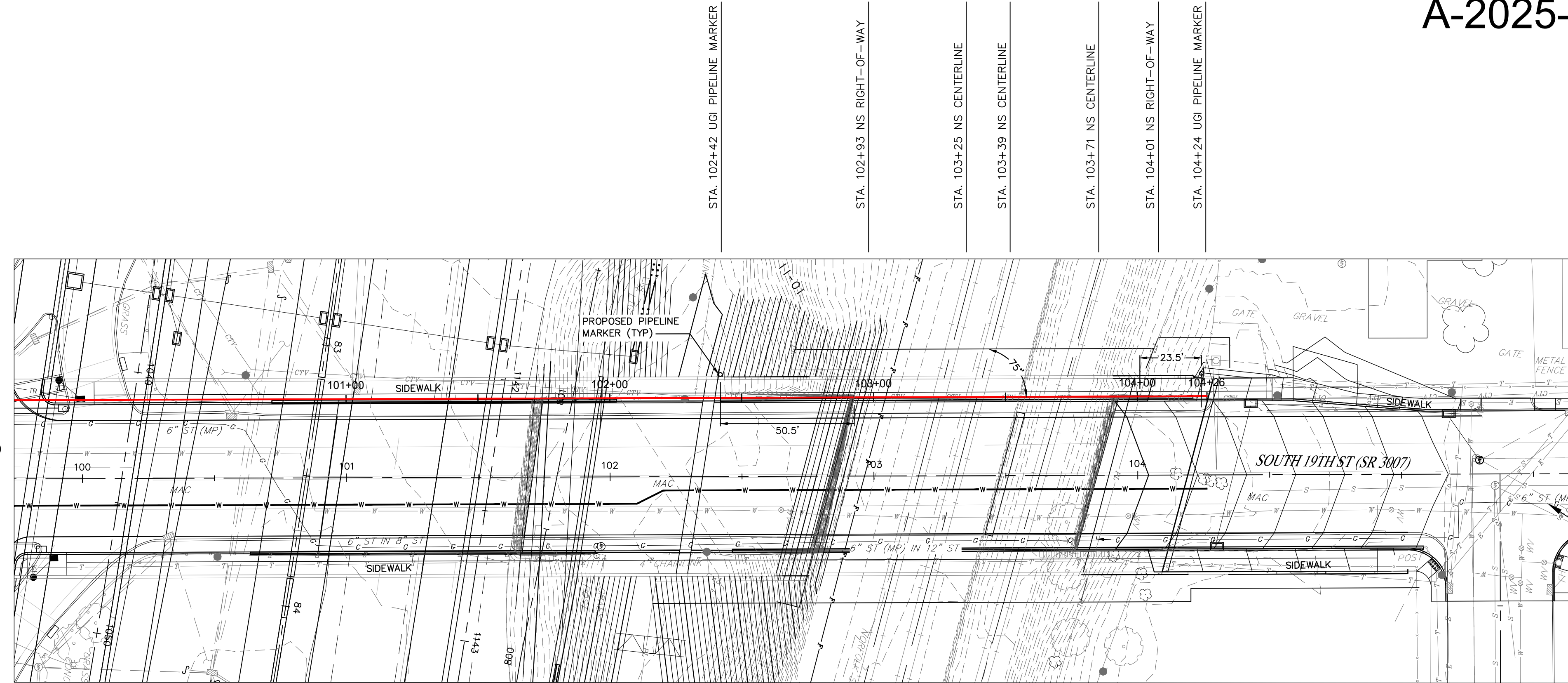
A-2025-3059471



30 15 0 30
 SCALE IN FEET

APPROX 489 FT TO GV(905549)

FROM NORFOLK SOUTHERN
 RIGHT-OF-WAY



PLAN VIEW
 SCALE: 1"=30'

NOTES:

1. THE CONTRACTOR SHALL PLACE A PA ONE-CALL AT 811 OR 1-800-242-1776 AT LEAST THREE (3) WORKING DAYS PRIOR TO ANY EARTH DISTURBANCE.
2. THE CONTRACTOR SHALL VERIFY LOCATIONS OF EXISTING BURIED UTILITIES, BOTH HORIZONTALLY AND VERTICALLY, PRIOR TO CONSTRUCTION.
3. THE PLANS ARE BASED ON THE FOLLOWING:
 - A. BASE PLANS AND PROPOSED WORK PROVIDED BY PENNDOT.
 - B. PENNDOT PLANS FOR DAUPHIN COUNTY SR 0083 SECTION 079 BRIDGE 2 AND BRIDGE 3 (INCLUDING GEOTECHNICAL).
 - C. EXISTING AND PROPOSED UGI FACILITIES PROVIDED BY UGI.
4. CONTRACTOR SHALL FOLLOW REQUIREMENTS OF NORFOLK SOUTHERN'S NSCE-8 SPECIFICATIONS. CONTRACTOR SHALL ALSO ACQUIRE A RIGHT-OF-ENTRY PERMIT FROM NORFOLK SOUTHERN PRIOR TO START OF WORK AS NECESSARY ALONG WITH COORDINATION WITH PENNDOT.
5. PIPELINE AND CROSSING TO BE INSTALLED AND MAINTAINED IN ACCORDANCE WITH LAST APPROVED AMERICAN RAILWAY ENGINEERING AND MAINTENANCE OF WAY ASSOCIATION SPECIFICATIONS FOR PIPELINES CONVEYING FLAMMABLE AND NON-FLAMMABLE SUBSTANCES.
6. BLASTING NOT PERMITTED.
7. CARRIER PIPE SHALL CONFORM TO API 5L, GRADE X52 (8.625" O.D. X 0.322" WT)
8. ABUTMENT AND DIAPHRAGM PENETRATIONS WILL USE A 12.75" SCH 40 POWERCRETE COATED STEEL SLEEVE.
9. ROLLERS SUPPLIED BY LB&A. EXPANSION JOINT SUPPLIED BY BADGER.
10. AS-BUILTS WILL BE REQUIRED UPON COMPLETION OF CONSTRUCTION. COORDINATE WITH PROTECTION SERVICES IF FURTHER ASSISTANCE IS NEEDED.

SIGN SCHEDULE:

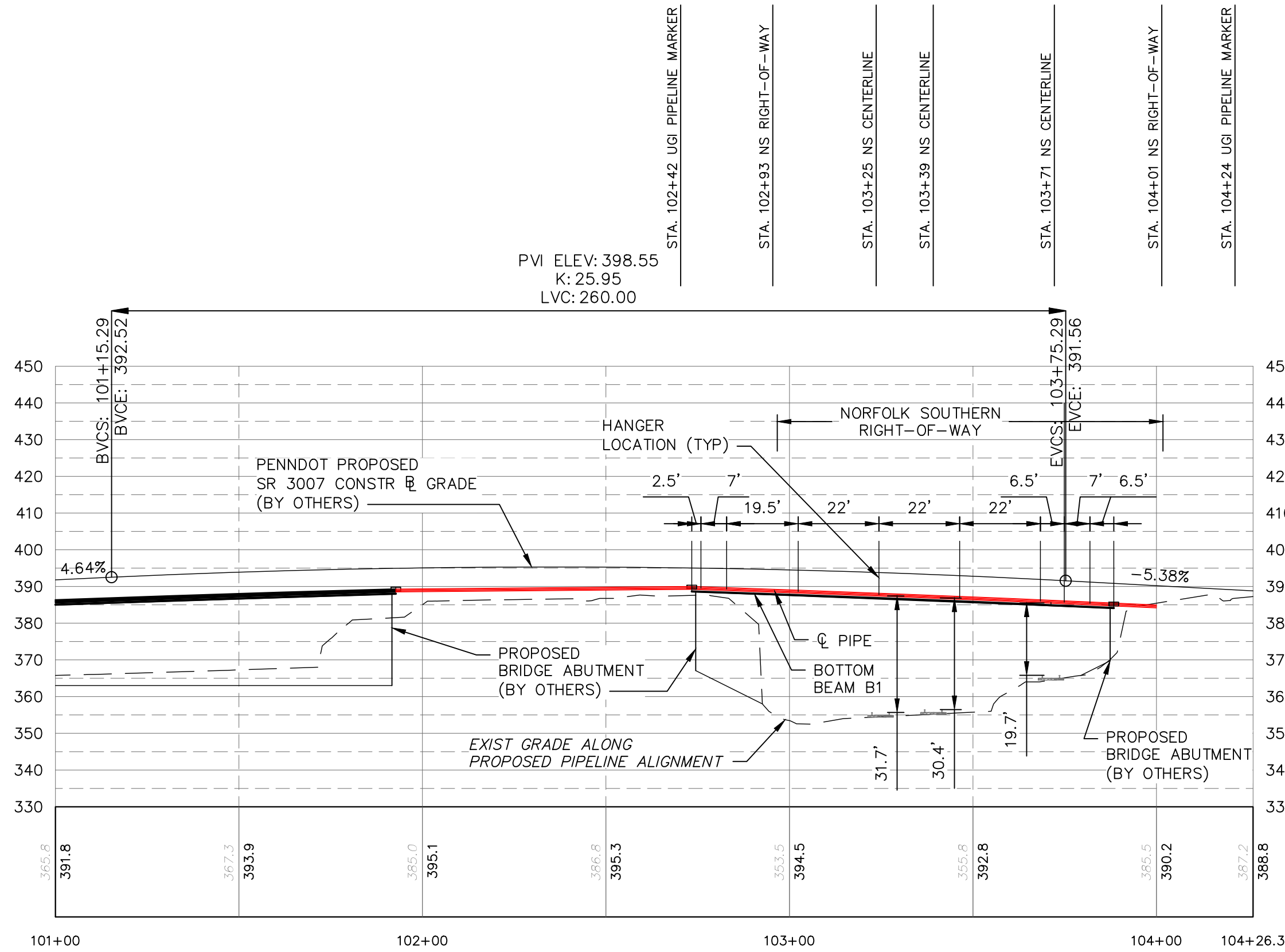
ALL SIGNS SHALL SHOW THE FOLLOWING INFORMATION:

OWNER NAME: UGI UTILITIES, INC.
 OWNER ADDRESS: 1301 AIP DRIVE, MIDDLETOWN, PA 17057

CONTENTS OF PIPE: NATURAL GAS
 EMERGENCY TELEPHONE NO.: 1-(800)-276-2722

OPERATING PRESSURE: 60 PSI
 APPROXIMATE DEPTH OF COVER: N/A

LATITUDE: N40° 15' 26.64" LONGITUDE: W76° 51' 21.74"
 DAUPHIN COUNTY, PENNSYLVANIA (M.P. 110.93)



PROFILE VIEW
 SCALE: 1"=30'

UGI
 Utilities, Inc.
 1301 AIP Drive
 Middletown, PA 17057

811
 Know what's below.
 Call before you dig.
 FINAL DESIGN TICKETS
 20250061293

AED
 Energy Services
 Powered by ARG™

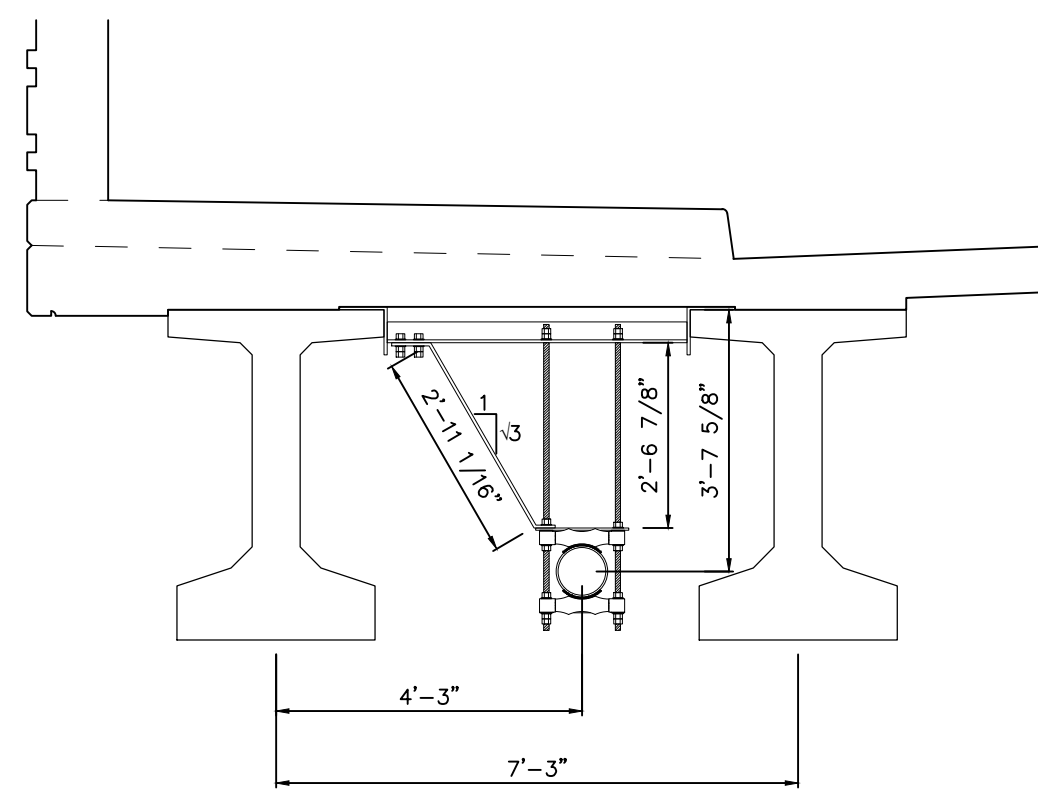
UGI CONTACT INFORMATION:
 PROJECT OWNER:
 PAUL TRAN
 717-255-4325
 PROJECT MANAGER:
 N/A

19TH ST REPLACEMENT
 GAS MAIN
 HARRISBURG CITY
 DAUPHIN COUNTY, PA

FP NO.:		/ SO NO.:	
SIZE	MATERIAL	METHOD	WORK REQUEST NO.

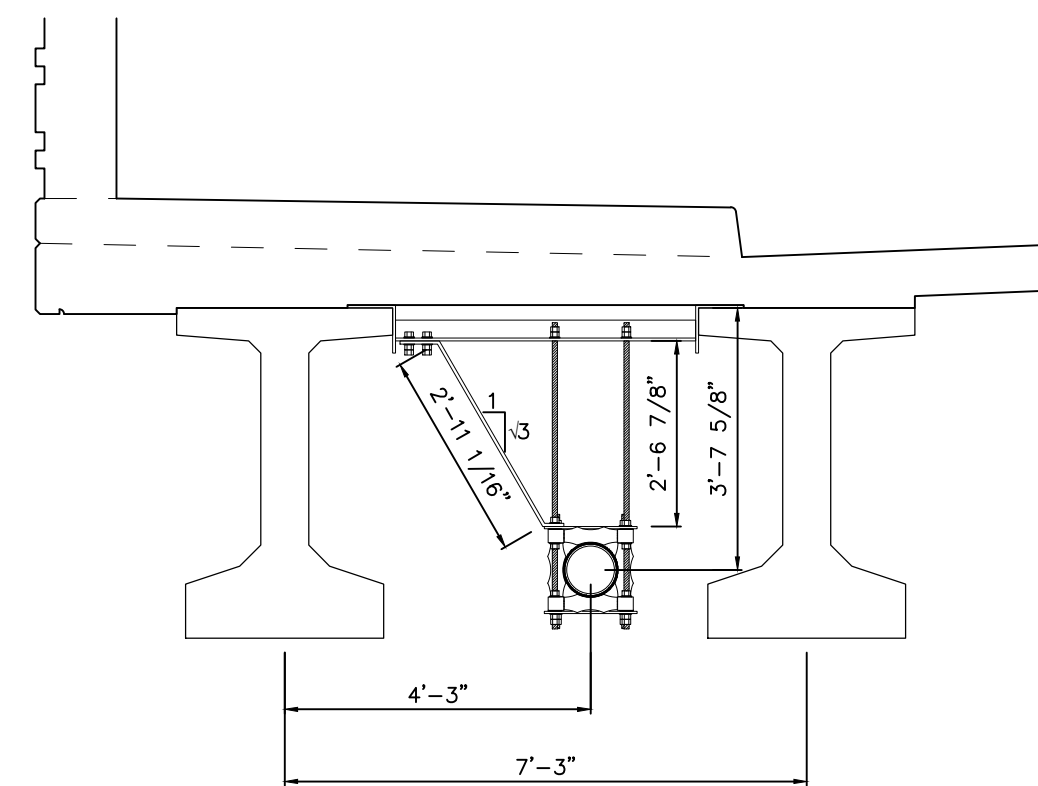
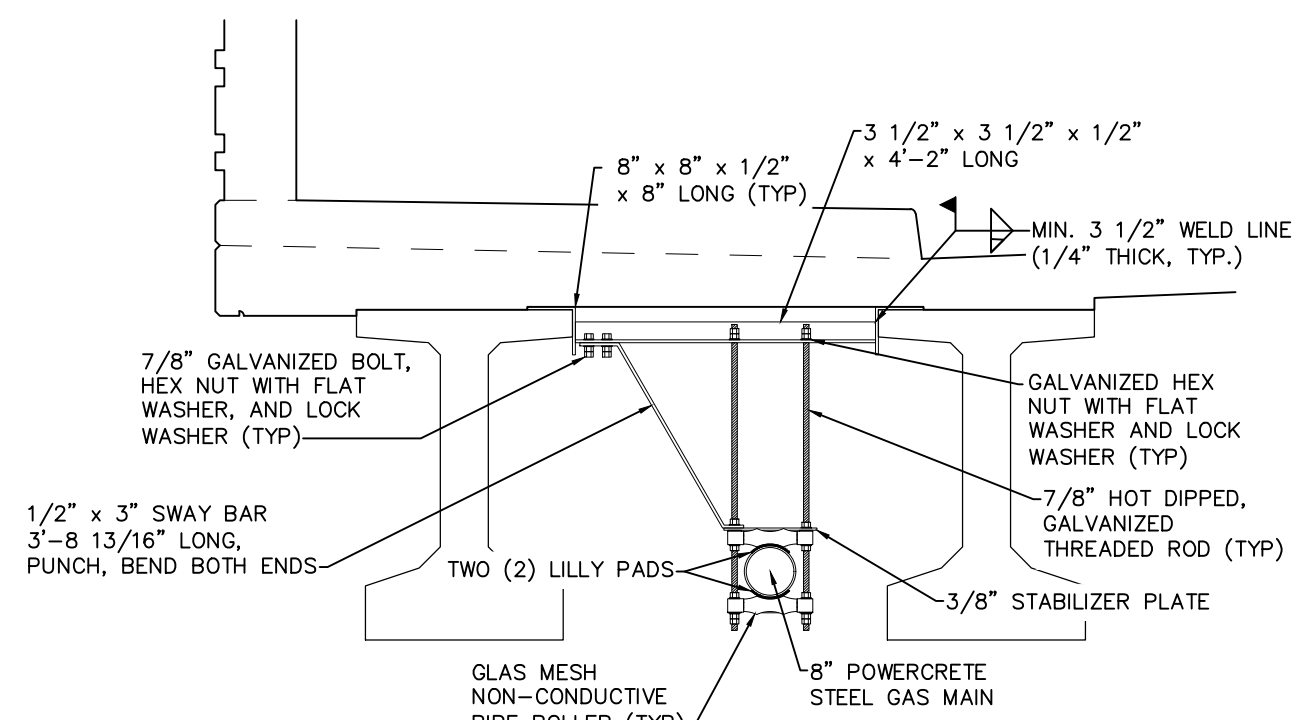
CD-1
 PLAN VIEW
 Sheet 1 of 3

S:\Projects\4444134 UGI S: 19th Street Bridge\90_CAD Models and Sheets\04_C_Civil\44-44134-19thStreetBridges.dwg Oct 24, 2025 - 3:13pm



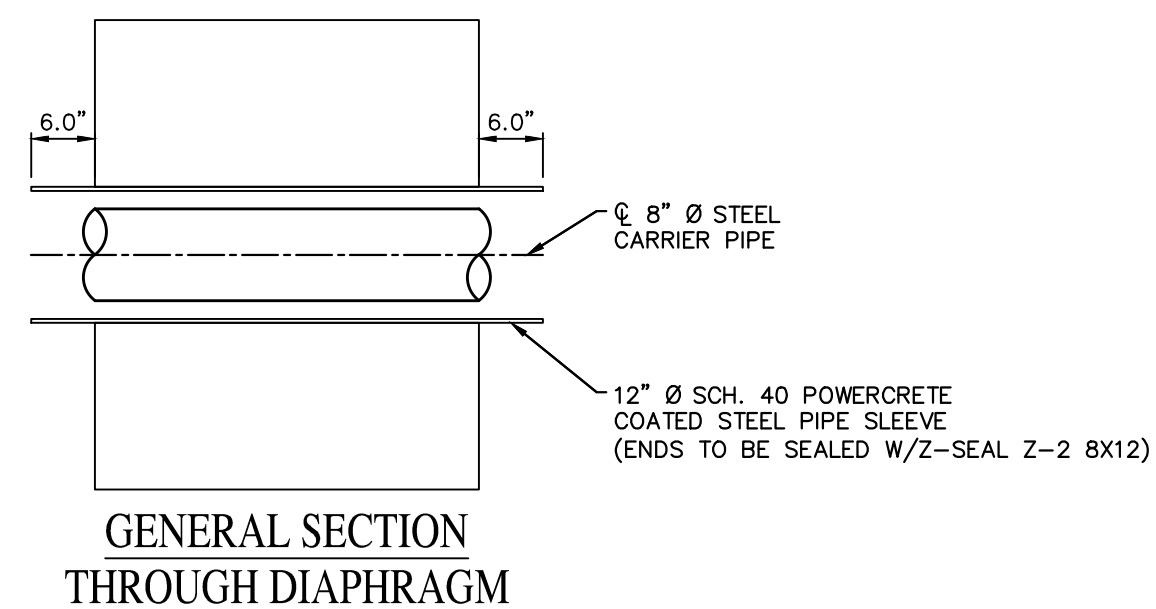
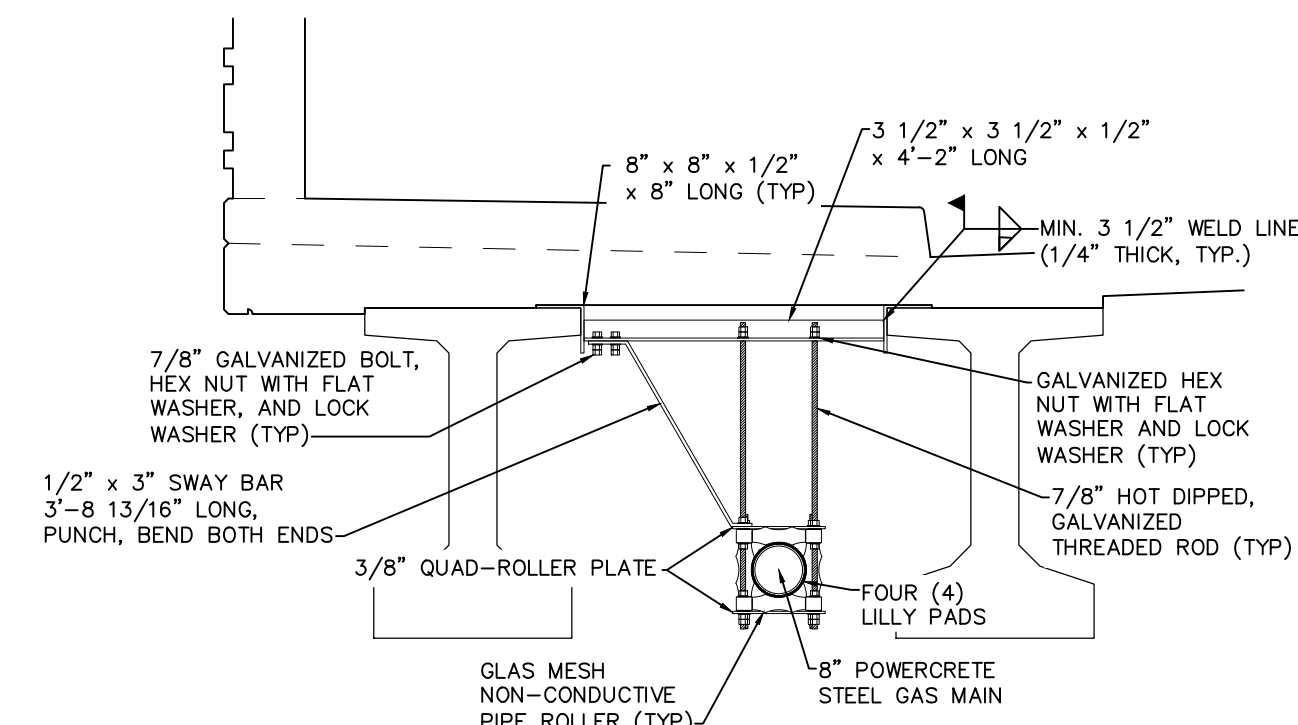
DUAL-ROLLER HANGER DETAIL

SCALE: 3/8"=1'

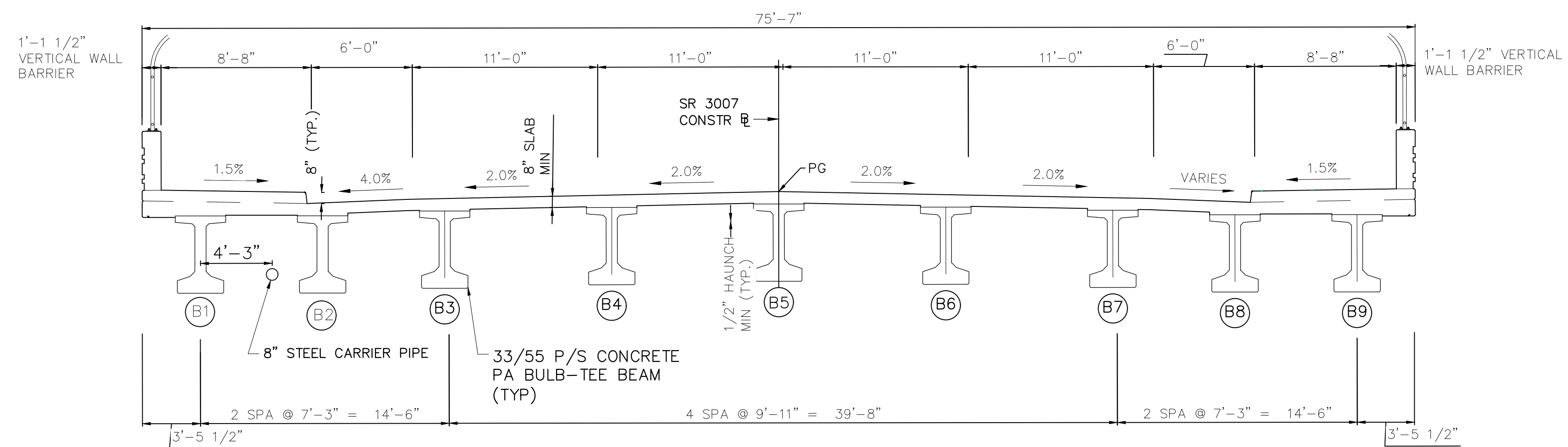


QUAD-ROLLER HANGER DETAIL

SCALE: 3/8"=1'

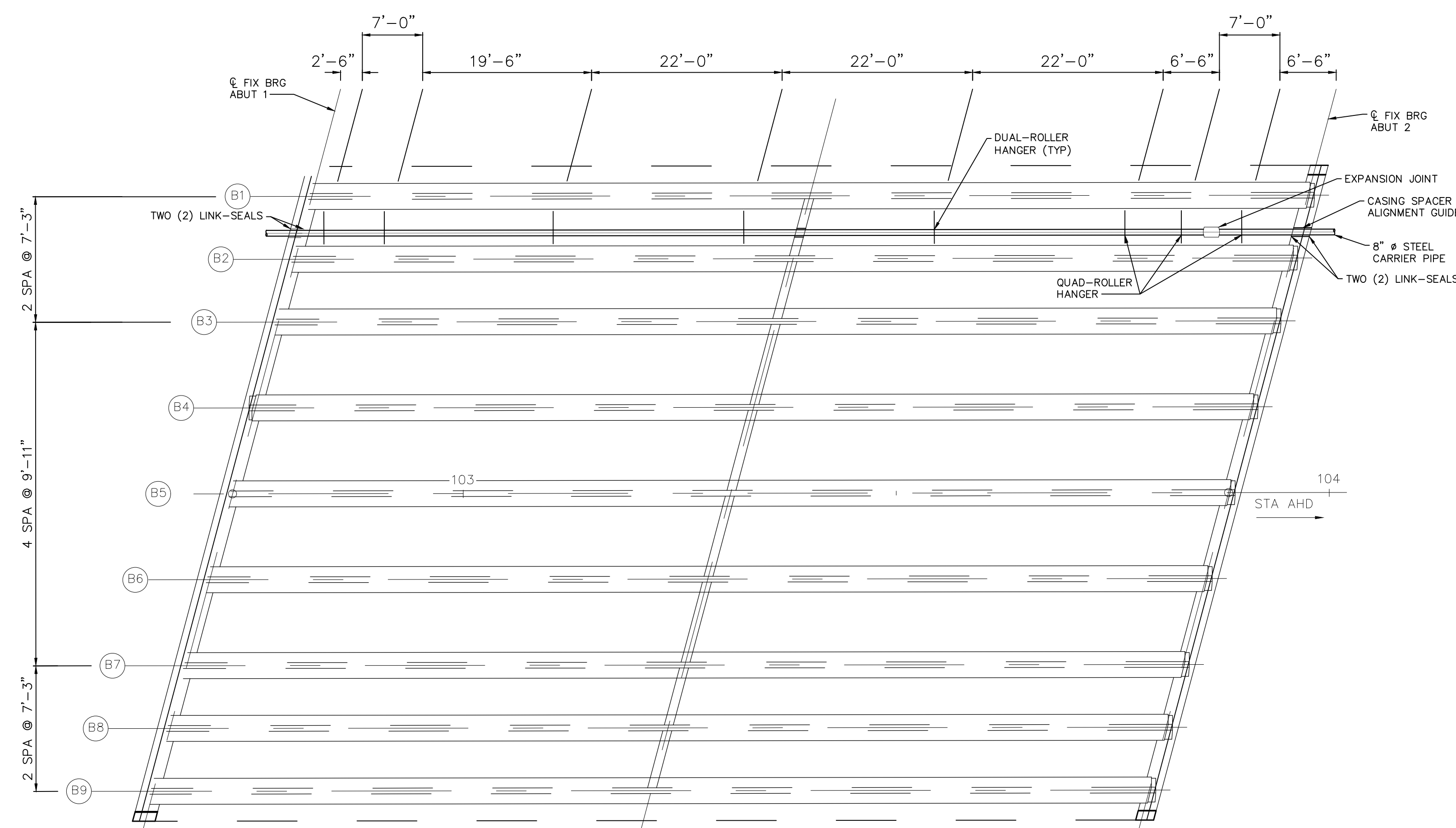


GENERAL SECTION THROUGH DIAPHRAGM



TYPICAL SECTION DETAIL OVER NORFOLK SOUTHERN

SCALE: 3/16"=1'



PIPE HANGER SPACING OVER NORFOLK SOUTHERN

SCALE: 1"=10'

UGI Utilities, Inc.
1301 AIP Drive
Middletown, PA 17057

FINAL DESIGN TICKETS
20250061293

UGI CONTACT INFORMATION:
PROJECT OWNER:
PAUL TRAN
717-255-4325
PROJECT MANAGER:
N/A

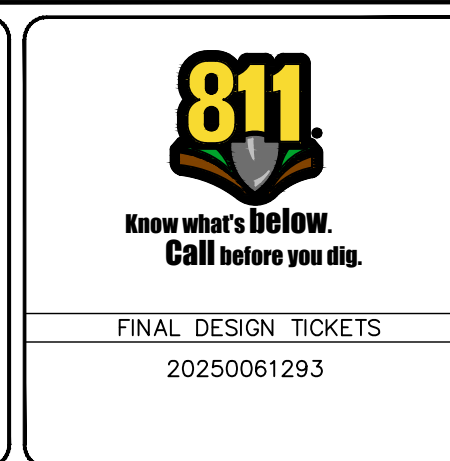
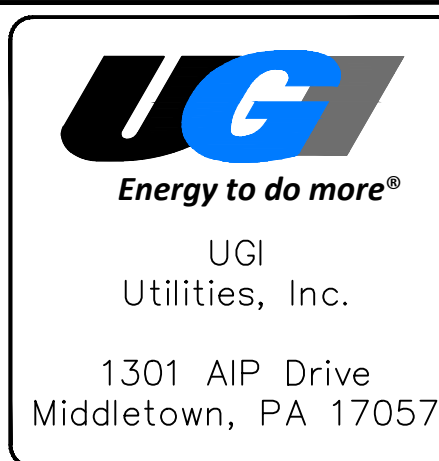
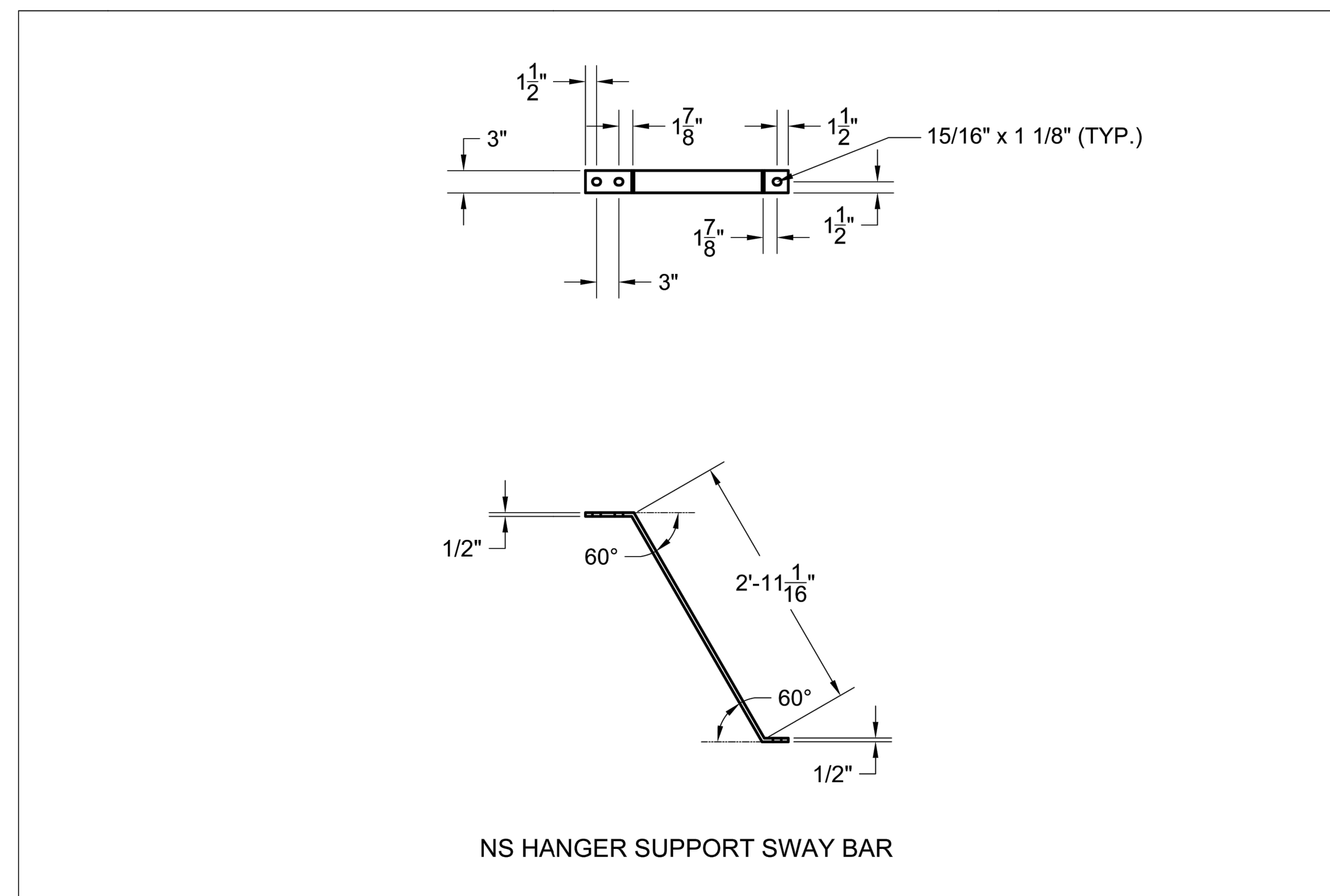
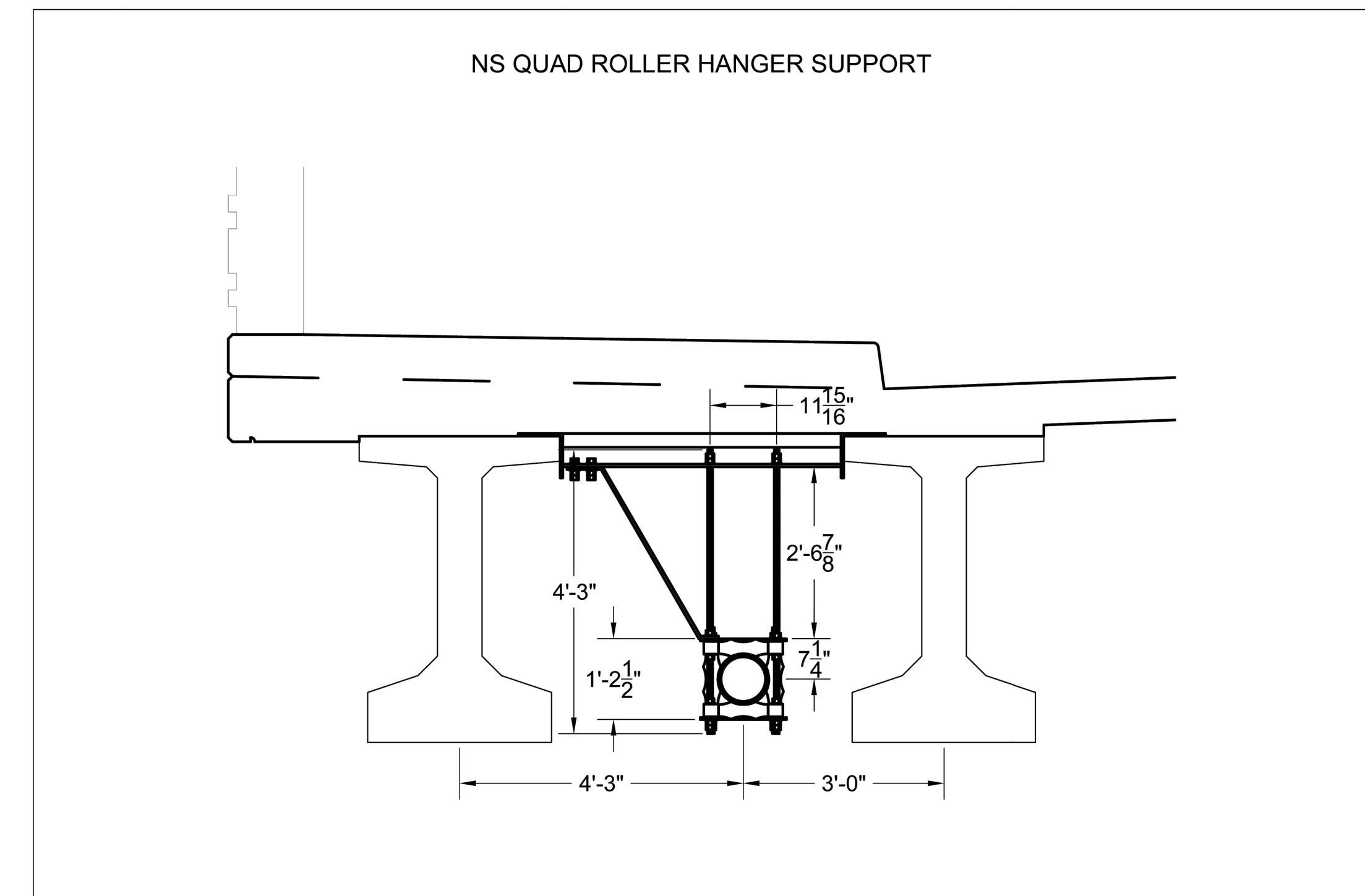
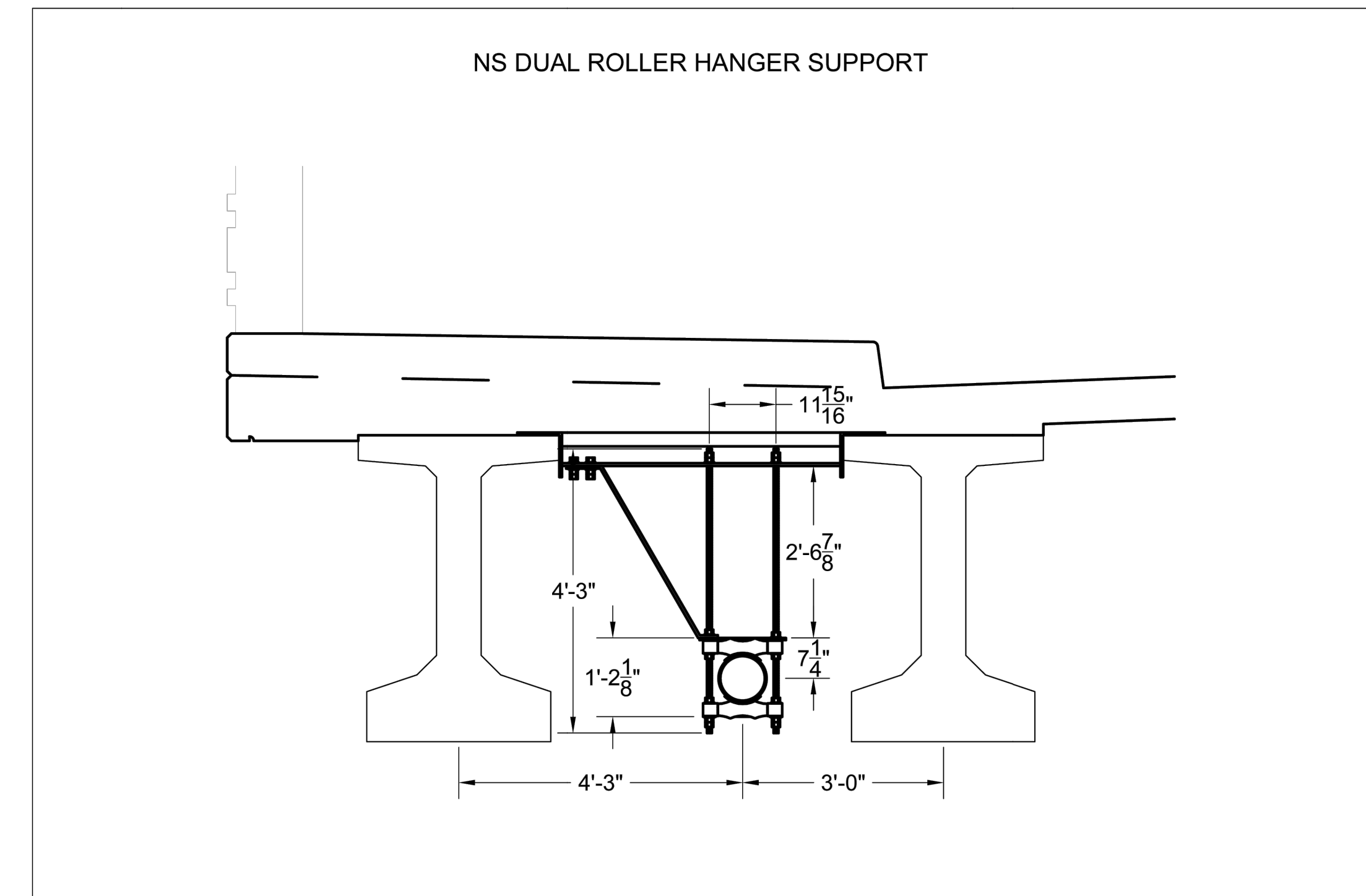
19TH ST REPLACEMENT
GAS MAIN
HARRISBURG CITY
DAUPHIN COUNTY, PA

SIZE	MATERIAL	METHOD	WORK REQUEST NO.	SAP ERP NO.

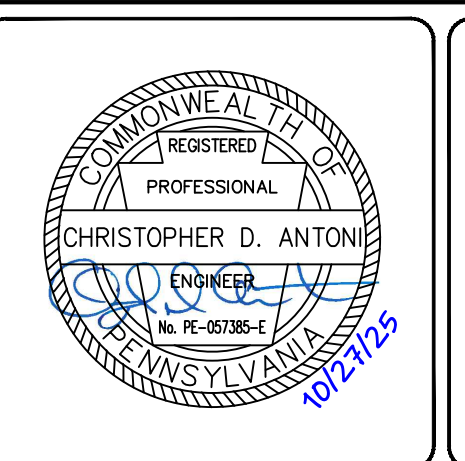
D-1
DETAILS 1
Sheet 2 of 3

S:\Projects\4444134 UGI S. 19th Street Bridge\30_CAD Models and Sheets\04_C_Civil\44-44134-19thStreetBridges.dwg Oct 27, 2025 - 8:55am

PIPE DATA SHEET		
	CARRIER PIPE	CASING PIPE
CONTENTS TO BE HANDLED	NATURAL GAS	N/A
MAX. ALLOWABLE OPERATING PRESSURE	60 PSI	N/A
NOMINAL SIZE OF PIPE	8"	N/A
OUTSIDE DIAMETER	8.625"	N/A
INSIDE DIAMETER	7.981"	N/A
WALL THICKNESS	0.322"	N/A
WEIGHT PER FOOT	28.55 LBS	N/A
MATERIAL	STEEL	N/A
PROCESS OF MANUFACTURE	HFW-ERW	N/A
SPECIFICATION	API-5L	N/A
GRADE OR CLASS (SPECIFIED MINIMUM YIELD STRENGTH)	GRADE X52	N/A
TEST PRESSURE	90 PSI MIN	N/A
TYPE OF JOINT	WELDED	N/A
TYPE OF COATING	40 MILS ARO	N/A
DETAILS OF CATHODIC PROTECTION	EX. RECTIFIER IMPRESSED CURRENT, Mg ANODE GROUNDING	N/A
DETAILS OF SEALS OR PROTECTION AT END OF CASING		N/A
CHARACTER OF SUBSURFACE MATERIAL	A-4/ML (S) A-1-B/GM (N) A-6/CL (S) A-6/CL (N)	N/A
APPROXIMATE GROUND WATER LEVEL	ELEV 336' TO 346'	N/A
SOURCE OF INFORMATION SUBSURFACE CONDITIONS	GEOTECHNICAL BORINGS	N/A



UGI CONTACT INFORMATION:
 PROJECT OWNER:
 PAUL TRAN
 717-255-4325
 PROJECT MANAGER:
 N/A



19TH ST REPLACEMENT
 GAS MAIN
 HARRISBURG CITY
 DAUPHIN COUNTY, PA

FP NO.: / SO NO.:				
SIZE	MATERIAL	METHOD	WORK REQUEST NO.	SAP ERP NO.

D-2
 DETAILS 2
 Sheet 3 of 3

S:\Projects\4444134 UGI S. 19th Street Bridge\90_CAD Models and Sheets\04_CAD\44-44134-19thStreetBridges.dwg Oct 24, 2025 - 3:13pm