



COMMONWEALTH OF PENNSYLVANIA  
PENNSYLVANIA PUBLIC UTILITY COMMISSION  
COMMONWEALTH KEYSTONE BUILDING  
400 NORTH STREET  
HARRISBURG, PENNSYLVANIA 17120

IN REPLY PLEASE  
REFER TO OUR FILE

January 6, 2026

A-2025-3059440

**Via electronic mail**  
SEE ATTACHED LIST  
PARTIES OF RECORD

In re: Application of Gigapower, LLC for approval to alter the public crossing (DOT 859 635 E) by the installation of an aerial fiber optic wireline where Pierce Street crosses, below grade, one (1) track of Norfolk Southern Railway Company located in Kingston Borough, Luzerne County.

To Whom It May Concern:

The above-captioned application was filed with the Commission requesting approval to alter the public crossing within the right-of-way of the subject highway.

It is requested that each party in interest review the application and notify the Commission of any objection to the application by January 26, 2026. If no objection to the application is filed with the Commission by the above stated date, the Commission will approve the application permitting Gigapower, LLC to install its facilities through the public crossing listed in this proceeding in accordance with Section 2702, Title 66 of the Pennsylvania Public Utility Code.

All parties are being sent this notice by e-mail. Please eFile any written objections and formal correspondence via <https://efiling.puc.pa.gov> and e-mail a copy to the below address.

Best regards,

A handwritten signature in black ink that reads 'Dennis J. Moody'.

Dennis J. Moody, P.E.  
Rail Safety Division, Engineering Section  
Bureau of Technical Utility Services  
Phone: 717-787-6805  
Email: [demoody@pa.gov](mailto:demoody@pa.gov)

Parties of Record  
A-2025-3059440

Karen Cummings, Esq.  
Assistant Counsel  
Pennsylvania Department of Transportation  
Office of Chief Counsel  
P.O. Box 8212  
Harrisburg, PA 17105-8212  
kcummings@pa.gov

Mark Chappell, P.E.  
Chief  
Pennsylvania Department of Transportation  
Bureau of Design and Delivery Right-of-Way,  
Utilities, & Grade Crossing Division  
P.O. Box 3362  
Harrisburg, PA 17105-3362  
marchappel@pa.gov

Sarah Fenton  
Grade Crossing Engineer  
Pennsylvania Department of Transportation  
Bureau of Design and Delivery Right-of-Way,  
Utilities, & Grade Crossing Division  
P.O. Box 3362  
Harrisburg, PA 17105-3362  
sfenton@pa.gov

Tim Hann, P.E.  
Grade Crossing Engineer  
Pennsylvania Department of Transportation  
Bureau of Design and Delivery Right-of-Way,  
Utilities, & Grade Crossing Division  
P.O. Box 3362  
Harrisburg, PA 17105-3362  
tihann@pa.gov

John Pfeiffer  
District Railroad Coordinator  
Pennsylvania Department of Transportation  
Engineering District 4-0  
55 Keystone Industrial Park  
Dunmore, PA 18512  
jopfeiffer@pa.gov

Norfolk Southern Railway Company  
Attn: Engineering/Permitting  
Three Commercial Place  
Norfolk, VA 23510  
ns.permitting@railpros.com

Julianne Freeman, Esq.  
General Attorney  
Norfolk Southern Railway Company  
Three Commercial Pl  
Norfolk, VA 2551-9241  
julianne.freeman@nscorp.com

Luzerne County Courthouse (*party added*)  
Attn: Permits/Public works  
200 N River St  
Wilkes-Barre, PA 18711  
jennifer.pecora@luzernecounty.org

David Yefko  
Kingston Borough,  
500 Wyoming Avenue  
Kingston Borough, PA 18704  
zoning@kingstonpa.org

Tamara Kelly, Esq.  
Associate Counsel  
UGI Corporation  
500 North Gulph Road  
King of Prussia, PA 19406  
kellyt@ugicorp.com

Suzan D. Paiva  
Associate General Counsel  
Verizon Pennsylvania LLC  
900 Race St., 6th Floor  
Philadelphia, PA 19107  
suzan.d.paiva@verizon.com (*updated*)

North Penn Long Distance Corporation  
Empire/North Penn Telephone  
34 Main Street  
PO Box 349  
Prattsburgh, NY 14873  
ospeng@etcnpt.com

Parties of Record  
A-2025-3059440

Comcast c/o Americomm LLC  
Americomm LLC  
21 State Avenue Suite 1  
Carlisle, PA 17013  
carol@americomm-llc.com  
heather@americomm-llc.com

Sheena Wiater  
Ion Holdco LLC  
7890 Lehigh Crossing  
Victor, NY 14564  
swiater@firstlight.net  
scharney@firstlight.net  
smercier@firstlight.net  
~~flf-licensing@firstlight.net~~ (*undeliverable*)  
rsitler@firstlight.net

MCarlo Verdi III  
Teleport Communications America LLC  
900 Old Marple Road  
Springfield, PA 19064  
cverdi@att.com  
jay@trecgroup.com

Mary Rodman  
CTSI LLC  
100 CTE Drive  
Dallas, PA 18612  
pa.structure.access@ftr.com

Kelly Ragosta  
Zito Media  
PO Box 665  
Coudersport, PA 16915-0665  
kelly.ragosta@zitomedia.com

Scott Dreiling  
XO Communications Services LLC  
1220 Broadcasting Road  
Wyomissing, PA 19610  
scott.j.dreiling@xo.com

**Applicant(s):**

Thomas Grace  
CCO and Chief Counsel  
Gigapower, LLC  
311 South Akard Street, 21st Floor  
Dallas, TX 75202  
thomas.grace@gigapower.com

Rich Rehak Jr.  
Director of Network Operations NEPA  
Gigapower, LLC  
PO BOX 179  
East Greenville, PA 18041  
permitting.nepa@gigapower.com

Eddie D. Lowe  
Sr OSP Engineer  
Corning Optical Communications  
4200 Corning Place  
Charlotte, NC 28216  
loweed@corning.com

**Other emails sent:**

slocec3@corning.com  
dgcavuto@ctdi.com

PLAN PREPARATION

OWNER:  
GIGAPOWER  
P.O. BOX 179  
EAST GREENVILLE, PA 18041

NICOLE ATHERHOLT  
DIRECTOR OF NETWORK OPERATIONS  
NICOLE.ATHERHOLT@GIGAPOWER.COM

RICH REHAK  
OUTSIDE PLANT SUBJECT MATTER  
EXPERT  
RICH.REHAK@GIGAPOWER.COM

DANIEL STELMACK  
CONSTRUCTION LEAD - PA  
DANIEL.STELMACK@GIGAPOWER.COM  
570-589-5533

ENGINEERING FIRM:  
4200 CORNING PLACE  
CHARLOTTE, NC 28216

EDWIN ROGERS  
PROGRAM MANAGER  
ROGERSE2@CORNING.COM

EDDIE LOWE  
SENIOR OUTSIDE PLANT ENGINEER  
LOWEED@CORNING.COM

PERMIT DRAWN BY:  
CHRIS SLOCE  
ENGINEER/TECH  
SLOCEC3@CORNING.COM

PROJECT INFORMATION

MASTER PROJECT: GIGAPOWER - NEON-LIMA  
PROJECT NAME: WB301-RT3-SEC4-HANL  
CORNING PROJECT NUMBER: CORNING NUMBER P-#####  
PPL APPLICATION NUMBER: NA

**NOTICE: These plans were provided to a Commission staff engineer on 12/29/2025 as an updated copy due to clarify issues in the original filed copy of the plans.**

DISTRICT	COUNTY	BOROUGH	ROUTE	SEGMENT	OFFSET	TOTAL SHEETS
4	40	KINGSTON	ROAD_NUMBER	0010	1186	11
	40	KINGSTON	ROAD_NUMBER	0010	1340	

# RIGHT-OF-WAY OCCUPANCY PERMIT

448 PIERCE ST  
KINGSTON, (LUZERNE), PENNSYLVANIA  
FROM STA. N/A TO STA. N/A LENGTH 156' FT  
DATE: 12/3/2025

CROSSING #859635E  
RAILROAD SUBDIVISION: D&H SOUTH  
RAILROAD DIVISION OR REGION: KEYSTONE  
NEAREST RR TIMETABLE STATION: HUDSON  
RR MILEPOST: HA0688.750  
MAXIMUM TIMETABLE SPEED: 25MPH

SHEET INDEX	
001	COVER SHEET
002	NOTES
003	LEGEND
004	PLAN OVERVIEW
005	ELEVATION VIEW 1
006	ELEVATION VIEW 2
TYPICAL DETAILS	
601	POLE BONDING & GROUNDING
602	RISERS
603	SUSPENSION CLAMPS DETAILS
604	DOWN GUY DETAILS
605	POLE SLACK DETAILS
606	CROSSING INVENTORY REPORT

LIST OF PUBLIC UTILITIES

WATER & WASTEWATER  
PENNSYLVANIA AMERICAN WATER (800) 565-7292  
LACKAWANNA RIVER BASIN SEWER AUTH (570) 489-7563  
WYOMING VALLEY SANITARY AUTH (570) 825-3416

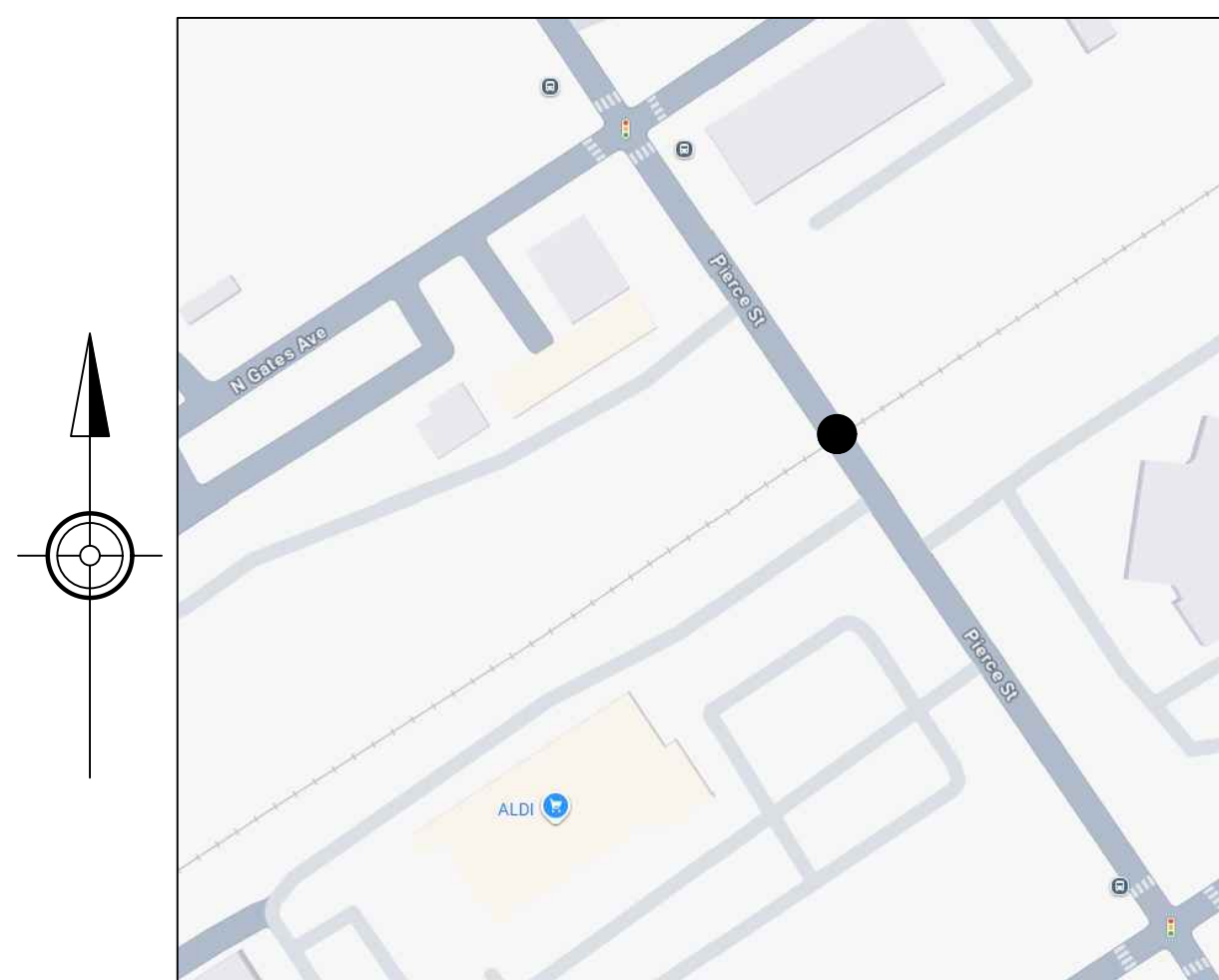
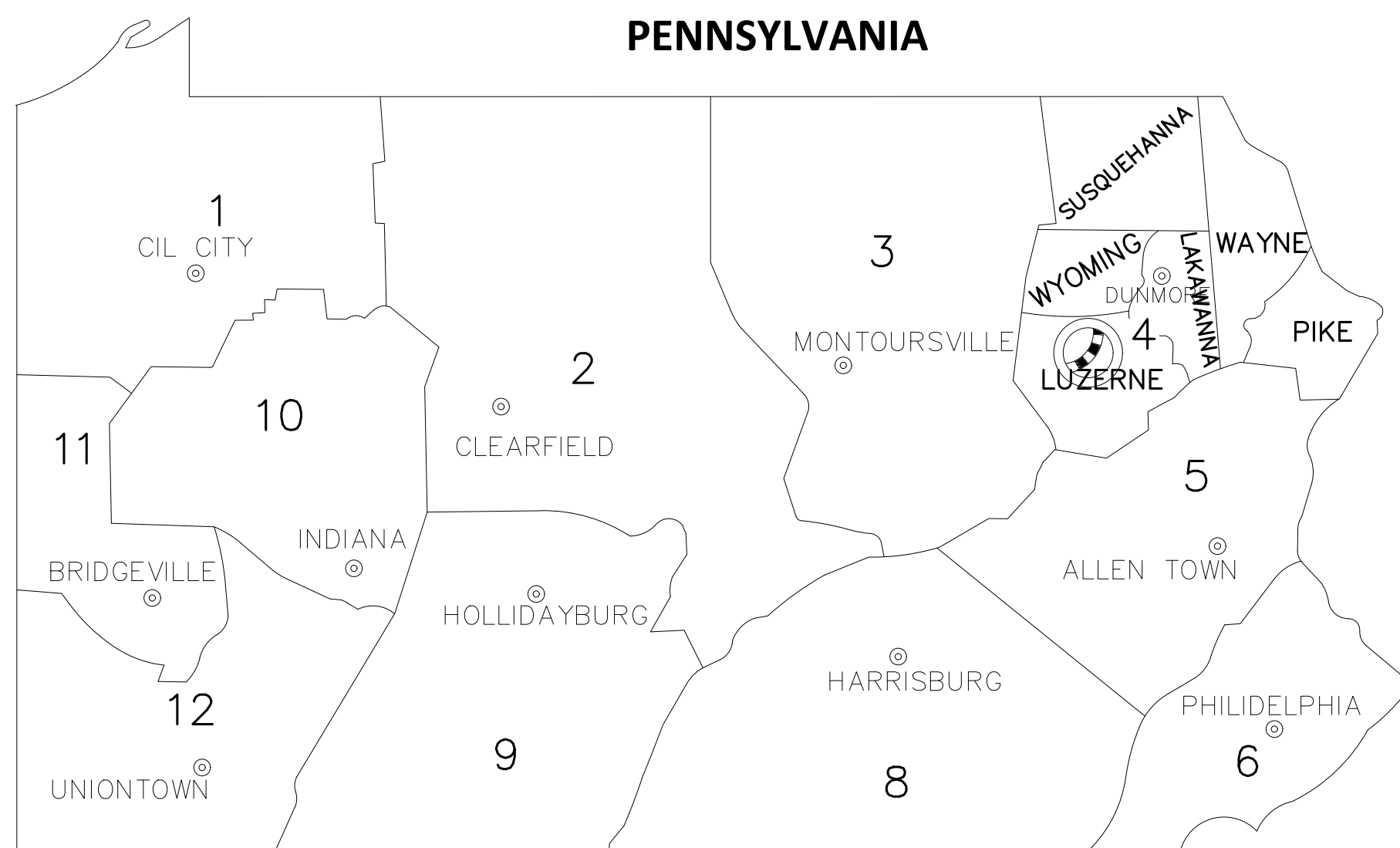
ELECTRICAL  
PPL COMPANY (800) 342-5775  
BLAKELY ELEC. (570) 383-3340  
UGI UTILITIES (800) 276-2722

GAS  
UGI UTILITIES (800) 276-2722

COMMUNICATIONS  
COMCAST - DURYEA  
FRONTIER  
LOOP INTERNET  
SERVICE ELECTRIC  
VERIZON PENNSYLVANIA

MUNICIPALITIES (LACKAWANNA)  
ARCHBALD (570) 876-1800  
BLAKELY (570)-383-3340  
DUNMORE (570) 343-7611  
JESSUP (570) 489-0411  
OLYPHANT (570) 489-2135  
THROOP (570) 489-8311  
ROADS & BRIDGES (570) 496-7733

MUNICIPALITIES (LUZERNE)  
HANOVER TWP (570) 825-8522  
KINGSTON (570) 288-4576  
NANTICOKE (570) 735-2800  
PITTSTON (570) 654-4601  
SUGAR NOTCH (570) 822-9282  
WILKES-BARRE (570) 208-4635  
ROAD & BRIDGES (570) 825-1600



LOCATION MAP

- NTS
- STATE HWY \_\_\_\_\_
  - BOROUGH STREETS - - - - -
  - WATER WAY \_\_\_\_\_
  - PROJECT LIMITS - - - - -

REV	DATE	DESCRIPTION
0		ORIGINAL

CALL BEFORE YOU DIG



PENNSYLVANIA LAW REQUIRES 3 TO 10 WORKING DAYS NOTICE FOR CONSTRUCTION PHASE BASED ON PROJECT COMPLEXITY AND 10 WORKING DAYS IN DESIGN STAGE -- STOP CALL 1-800-242-1776

THE PA ONE CALL NOTIFICATIONS PERFORMED DURING PROJECT DEVELOPMENT ARE AS FOLLOWS:

PRELIMINARY DESIGN SERIAL NO.: ~~DO NOT USE~~  
ON: ~~DO NOT USE~~  
FOR: WB301-RT3-SEC4-HANL

DESIGN DESIGNATION  
HIGHWAY CLASSIFICATION FREE ACCESS  
DESIGN SPEED 25 MPH  
PAVEMENT WIDTH 50'  
SHOULDER WIDTH N/A'

PLOT DATE: 12/5/2025, ORIGINAL SIZE: ANSI D (34 X 22 INCHES)

**GENERAL PERMIT NOTES:**

1. THE EXISTING SPEED LIMIT ON ROAD\_NUMBER IS 25 M.P.H
2. THE RIGHT-OF-WAY IS 50'.
3. ALL WORK IN PA STATE HIGHWAY RIGHT-OF WAY IS TO BE PERFORMED CONSISTENT WITH THE FOLLOWING:
  - 3.1. PENNDOT PUBLICATION 13M, DESIGN MANUAL PART 2 – HIGHWAY DESIGN
  - 3.2. PENNDOT PUBLICATION NO. 34, APPROVED AGGREGATE PRODUCERS (BULLETIN 14)
  - 3.3. PENNDOT PUBLICATION NO. 35, APPROVED CONSTRUCTION MATERIALS (BULLETIN 15)
  - 3.4. PENNDOT PUBLICATION NO. 41, PRODUCERS OF BITUMINOUS MATERIALS (BULLETIN 41)
  - 3.5. PENNDOT PUBLICATION NO. 42, PRODUCERS OF READY-MIX CONCRETE (BULLETIN 42)
  - 3.6. PENNDOT PUBLICATION NO. 46, TRAFFIC ENGINEERING MANUAL
  - 3.7. PENNDOT PUBLICATION NO. 72M, STANDARDS FOR ROADWAY CONSTRUCTION
  - 3.8. PENNDOT PUBLICATION NO. 111, PAVEMENT MARKINGS AND SIGNING STANDARDS
  - 3.9. PENNDOT PUBLICATION NO. 212, OFFICIAL TRAFFIC CONTROL DEVICES
  - 3.10. PENNDOT PUBLICATION NO. 213, TEMPORARY TRAFFIC CONTROL GUIDELINES
  - 3.11. PENNDOT PUBLICATION NO. 408, SPECIFICATIONS
4. PA STATE HIGHWAY RIGHT-OF-WAY MAY NOT BE USED FOR PARKING.
5. PERMITTEE AND PERMITTEE'S CONTRACTOR IS RESPONSIBLE FOR MAINTENANCE OF ALL AUTHORIZED STRUCTURES, FACILITIES, AND DRAINAGE.
6. PERMITTEE AND PERMITTEE'S CONTRACTOR IS RESPONSIBLE FOR MAINTENANCE OF ALL AUTHORIZED SIGNS AND PAVEMENT MARKINGS.
7. THREE TO TEN WORKING DAYS PRIOR TO EXCAVATION BASED ON THE COMPLEXITY OF THE PROJECT, THE CONTRACTOR MUST CONTACT THE PA ONE CALL SYSTEM, INC., PHONE 1-800-242-1776. SERIAL NO. ( ) FOR THE MUNICIPALITY OF KINGSTON. ADDITIONAL INFORMATION IS AVAILABLE AT <https://www.pa1call.org/pa811/Public/>.
8. THE CONTRACTOR IS REQUIRED TO NOTIFY THE DEPARTMENT AND SUBMIT AN ALLEGED VIOLATION REPORT (AVR) TO THE PA PUBLIC UTILITY COMMISSION THROUGH THE PA ONE CALL SYSTEM, [www.pa1call.org](http://www.pa1call.org) WITHIN TEN (10) BUSINESS DAYS AFTER A UTILITY IS STRUCK, DAMAGED, OR PREVIOUS DAMAGE IS DISCOVERED AS REQUIRED BY PENNSYLVANIA'S UNDERGROUND UTILITY LINE PROTECTION LAW ACT 50 (P.L.852, NO. 287 AMENDED OCT. 30, 2017).
9. IF A TRAFFIC SIGNAL IS WITHIN 500 FEET OF THE SITE, CALL THE DISTRICT TRAFFIC ENGINEER AT LEAST 3 DAYS PRIOR TO THE START OF WORK.
10. ALL PROPOSED PEDESTRIAN FACILITIES REFLECTED ON THESE PLANS, INCLUDING THOSE THAT ARE OUTSIDE OF PENNDOT LEGAL RIGHT-OF-WAY, SHALL BE CONSTRUCTED TO COMPLY WITH THE REQUIREMENTS OF THE U.S. ACCESS BOARD, PUBLIC RIGHT OF WAY ACCESSIBILITY GUIDELINES OF BUILDINGS OF THE ACCESSIBILITY OF BUILDINGS AND FACILITIES (ADAAG, PENNDOT DESIGN MANUAL PART 2, CHAPTER 6, AND PENNDOT STANDARDS FOR ROADWAY CONSTRUCTION (PENNDOT PUBLICATION 7M, RC-67M) PROVIDE GUIDANCE ON ADA ACCESSIBLE DESIGN FOR PEDESTRIAN FACILITIES AND CAN BE UTILIZED FOR REFERENCE.
11. CONSTRUCT ALL PROPOSED PEDESTRIAN FACILITIES ON THESE PLANS TO COMPLY WITH THE AMERICANS WITH DISABILITIES ACT, PUBLIC RIGHT-OF-WAY ACCESSIBILITY GUIDELINES (PROWAG), AND THE 2010 ADA STANDARDS.
12. IT IS THE RESPONSIBILITY OF THE PERMITTEE AND PERMITTEE'S CONTRACTOR TO REMOVE AND DEBRIS AND FLUSH OUT ALL EXISTING AND NEW STORM DRAINAGE FACILITIES WITHIN THE PROJECT LIMITS AT THE COMPLETION OF CONSTRUCTION.

**RESTORATION NOTES:**

1. BACKFILL COMPACTION TESTING DOCUMENTATION IS REQUIRED. ( PENNDOT PUBLICATION 282, CHAPTER 5.1 PAGE 160.)
2. OPENINGS SHALL BE BACKFILLED BY THE CONTRACTOR IN ACCORDANCE WITH DEPARTMENTS STANDARDS SPECIFICATIONS AND DETAILS. (67 PA CODE, CHAPTER 459.8(G)).
3. ALL TESTS PITS IN THE PAVEMENT SHALL FOLLOW RESTORATION FOR FLEXIBLE PAVEMENT.
4. PENNDOT INSPECTOR IS REQUIRED DURING TRENCH BACKFILL IN PAVEMENT, SIDEWALK, AND SHOULDER (PENNDOT PUBLICATION 282, CHAPTER 5.2, PAGE NO. 164)
5. CONTRACTOR SHALL RESTORE AREAS DISTURBED BY CONSTRUCTION OPERATIONS TO THEIR ORIGINAL CONDITION EXCEPT FOR THE REPLACEMENT OF TREES UNLESS OTHERWISE INDICATED.
6. TREES SHALL BE TRIMMED OR REMOVED AS REQUIRED FOR THE INSTALLATION OF UTILITY LINES. TREES THAT DO NOT REQUIRE REMOVAL SHALL BE PROTECTED FROM CONSTRUCTION OPERATIONS.

**MAINTENANCE AND PROTECTION OF TRAFFIC (MPT) NOTES:**

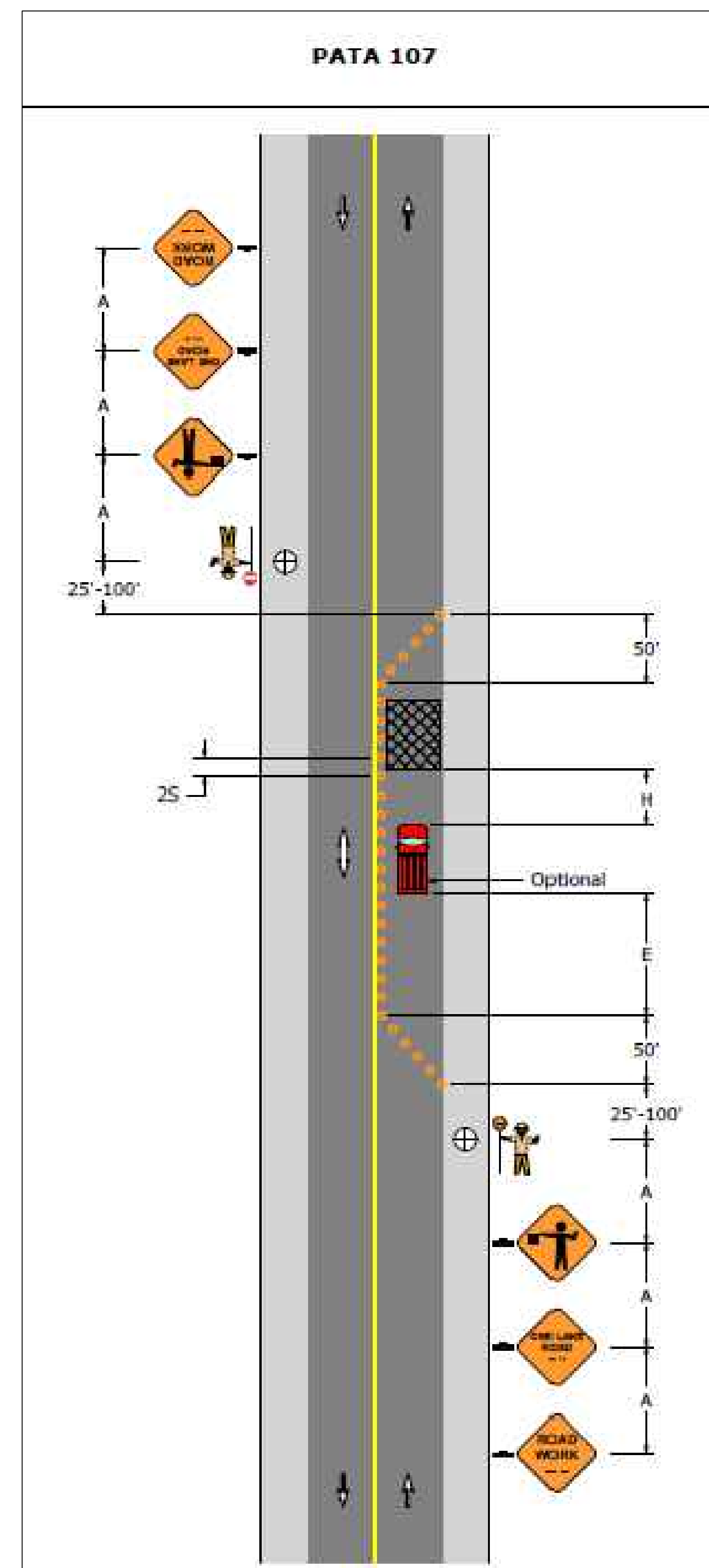
1. THIS WORK CONSISTS OF MAINTENANCE AND PROTECTION OF TRAFFIC AND THE PROTECTION OF THE PUBLIC WHEN APPROACHING AND DEPARTING THE CONSTRUCTION AREA AND WITHIN THE LIMITS OF CONSTRUCTION.
2. FURNISH, ERECT, PLACE AND MAINTAIN TRAFFIC CONTROL SIGNS AND DEVICES. MAINTAIN TRAFFIC DURING HOURS OF CONSTRUCTION AND ALL OTHER TIMES CONSISTENT WITH THE METHODS INDICATED ON THESE DRAWINGS AND THE FOLLOWING:
  - 2.1. PENNDOT PUBLICATION 35, APPROVED CONSTRUCTION MATERIALS (BULLETIN 15)
  - 2.2. PENNDOT PUBLICATION 46, TRAFFIC ENGINEERING MANUAL
  - 2.3. PENNDOT PUBLICATION 72M, STANDARDS FOR ROADWAY CONSTRUCTION
  - 2.4. PENNDOT PUBLICATION 111, PAVEMENT MARKINGS AND SIGNAGE STANDARDS
  - 2.5. PENNDOT PUBLICATION 212, OFFICIAL TRAFFIC CONTROL DEVICES
  - 2.6. PENNDOT PUBLICATION 213, TEMPORARY TRAFFIC CONTROL GUIDELINES
  - 2.7. PENNDOT PUBLICATION 236, HANDBOOK OF APPROVED DESIGNS
  - 2.8. PENNDOT PUBLICATION 408, SPECIFICATIONS
  - 2.9. MUTCO, CURRENT EDITION
3. REMOVE THESE DEVICES IMMEDIATELY AFTER UPON COMPLETION OF THE WORK, PENNDOT WILL REMOVE ANY TRAFFIC CONTROL DEVICES ERECTED BY DEPARTMENT FORCES.
4. PERMITTEE MUST ARRANGE FOR INSPECTION OF ALL DEVICES PRIOR TO START OF WORK.
5. COVER OR REMOVE ALL CONFLICTING SIGNS AND ERADICATE ALL CONFLICTING PAVEMENT MARKINGS.
6. MOUNT ALL LONG-TERM ADVANCED WARNING SIGNS ON TYPE III BARRICADES UNLESS OTHERWISE NOTED OR INSTRUCTED BY DISTRICT OFFICE.
7. ALL SIGNS AND DEVICES TO BE MAINTAINED IN NEW OR LIKE NEW CONDITION.
8. DRIVEWAYS WILL BE KEPT ACCESSIBLE AT ALL TIMES, LOCATE ALL SIGNS SO THAT SIGHT DISTANCE WILL NOT BE OBSTRUCTED AT DRIVEWAYS AND LOCAL ROADS.
9. ALL CHANNELIZING DEVICES, BARRICADES, AND SIGNS SHALL HAVE TYPE III OR BETTER PRISMATIC RETROREFLECTIVE SHEETING. SHEETING SHALL BE APPROVED AND LISTED IN PENNDOT PUBLICATION 35 (BULLETIN 15).
10. NO TRAFFIC RESTRICTIONS OR LANE CLOSURES ARE PERMITTED BETWEEN 6:00 AM AND 9:00 AM AND BETWEEN 3:00 PM AND 6:00 PM MONDAYS THROUGH FRIDAYS OR ON LEGAL HOLIDAYS AND WEEKENDS ASSOCIATED WITH LEGAL HOLIDAYS. ALL RESTRICTIONS AND CLOSURES ARE TO BE REMOVED BY NOON ON THE DAY PRIOR TO A LEGAL HOLIDAY.
11. PERMITTEE SHALL NOTIFY LOCAL EMERGENCY AUTHORITIES (E.G., POLICE, FIRE, MEDICAL,) AFFECTED BUSINESSES, SCHOOL DISTRICTS, THE GENERAL PUBLIC, THE DISTRICT PERMIT MANAGER AND THE DISTRICT AREAS COORDINATOR AT LEAST FOURTEEN (14) DAYS PRIOR TO SIGNIFICANT TRAFFIC IMPACTS (E.G., LATERAL WIDTH RESTRICTIONS LESS THAN 16 FEET, DETOURS).
12. MAINTENANCE OF AND PROTECTION OF TRAFFIC DURING CONSTRUCTION SHALL BE IN ACCORDANCE WITH THE APPLICABLE PATA DRAWINGS 107. IN THE CURRENT PENNDOT PUBLICATION 213, "TEMPORARY TRAFFIC CONTROL GUIDELINES."
13. DROP OFFS CREATED BY CONSTRUCTION OPERATIONS SHALL BE TREATED CONSISTENT WITH PUBLICATION 408, SECTION 901.31J).
14. REMOVE ALL SHORT TERM WORK ZONE TRAFFIC CONTROL SIGNING UPON COMPLETION OF THAT DAY'S WORK PERIOD.
15. RESTRICTING TRAFFIC FLOW WITHIN THE WORK AREA SHALL BE MINIMIZED TO PREVENT TRAFFIC CONGESTION AND UNSAFE TRAFFIC CONDITIONS.
16. NOTIFY THE LOCAL MUNICIPALITY WHERE SIGNALIZED INTERSECTIONS FALL WITHIN THE WORK ZONE. DO NOT FLAG A SIGNALIZED INTERSECTION WITHOUT THE MUNICIPALITY PLACING THE SIGNAL ON FLASH.
17. THE CONTRACTOR SHALL COMPLY WITH ACT 229 OF DECEMBER 2002 DURING CONSTRUCTION ACTIVITIES WITHIN THE PENNDOT RIGHT-OF-WAY.
18. ALL FLAGGERS TO TO WEAR YELLOW/GREEN ANSI II APPAREL AND LEGGINGS. ANSI III APPAREL IS REQUIRED DURING HOURS OF DARKNESS FOR ALL HIGHWAY WORKERS.

PROJECT NAME: WB301-RT3-SEC4-HANL

SHEET NAME: GENERAL NOTES

DATE: ----

SHT NO. 002



LINES

UTILITIES

SYMBOLS

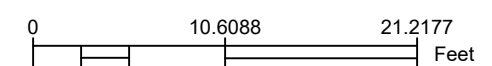
ABBREVIATIONS

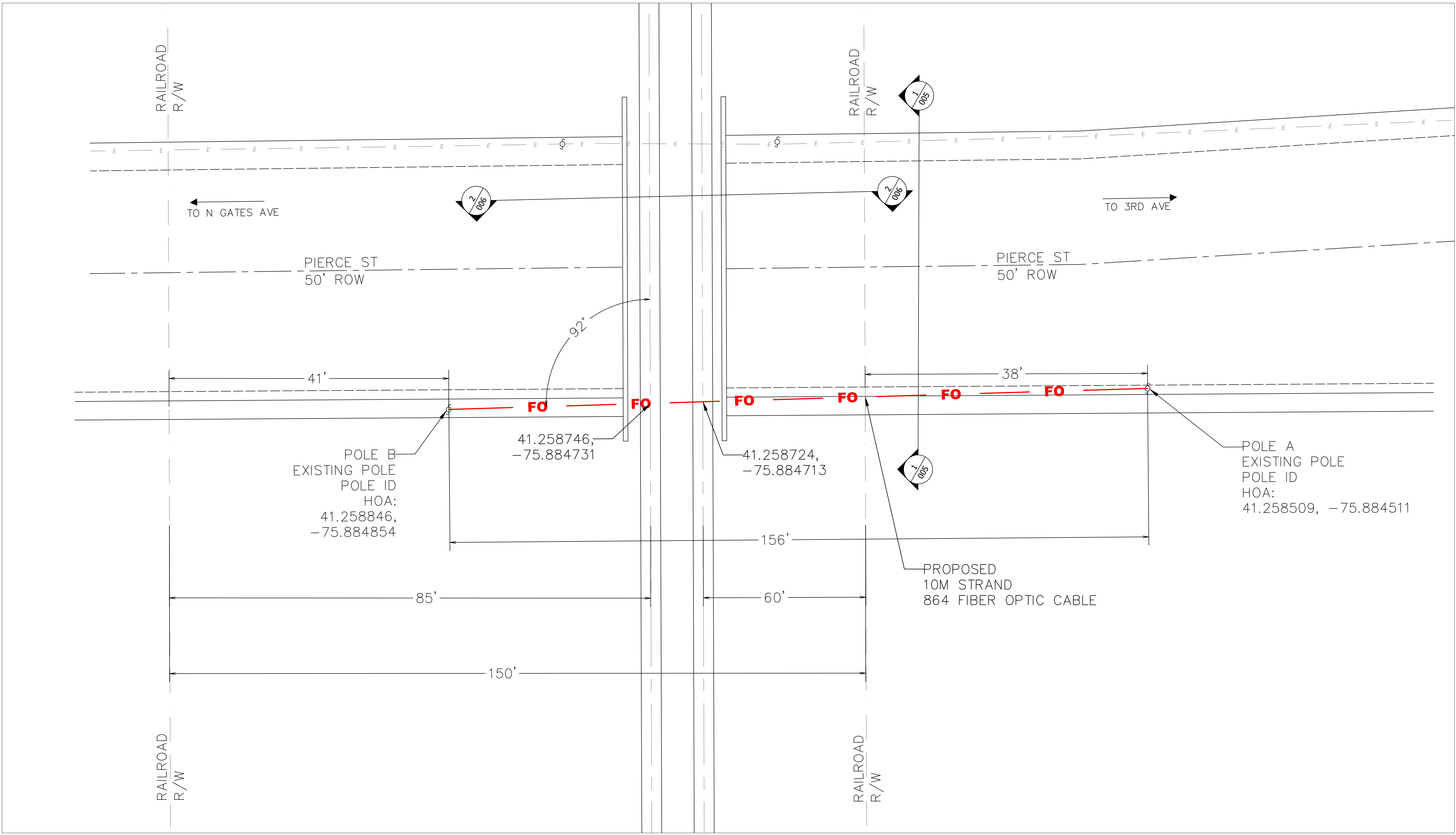
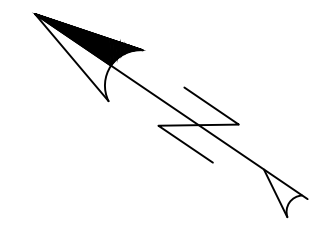
ABBREVIATIONS

---	<b>FO</b>	---	<b>FO</b>	---	<b>FO</b>	---	FIBER OPTIC - AERIAL
---	<b>FODB</b>	---	<b>FODB</b>	---	<b>FODB</b>	---	FIBER OPTIC - DIRECT BURIED
---	<b>FOU</b>	---	<b>FOU</b>	---	<b>FOU</b>	---	FIBER OPTIC - PLACED IN EXISTING CONDUIT
---	<b>FO(S)</b>	---	<b>FO(S)</b>	---	<b>FO(S)</b>	---	FIBER OPTIC - SLACK SPAN
---	<b>&gt;&gt;</b>	---	<b>&gt;&gt;</b>	---	<b>&gt;&gt;</b>	---	FIBER OPTIC - OVERHEAD GUY
---	<b>)</b>	---	<b>)</b>	---	<b>)</b>	---	FIBER OPTIC - POLE TO POLE GUY
---	<b>COND</b>	---	<b>COND</b>	---	<b>COND</b>	---	CONDUIT
-EXISTING							
---	<i>CTV</i>	---	<i>CTV</i>	---	<i>CTV</i>	---	CABLE TV - AERIAL
---	<i>CTVU</i>	---	<i>CTVU</i>	---	<i>CTVU</i>	---	CABLE TV - UNDERGROUND
---	<i>E</i>	---	<i>E</i>	---	<i>E</i>	---	ELECTRIC- AERIAL
---	<i>EU</i>	---	<i>EU</i>	---	<i>EU</i>	---	ELECTRIC- UNDERGROUND
---	<i>T</i>	---	<i>T</i>	---	<i>T</i>	---	TELEPHONE - AERIAL
---	<i>TU</i>	---	<i>TU</i>	---	<i>TU</i>	---	TELEPHONE - UNDERGROUND
---	<i>W</i>	---	<i>W</i>	---	<i>W</i>	---	WATER
---	<i>SS</i>	---	<i>SS</i>	---	<i>SS</i>	---	SANITARY SEWER
---	<i>SW</i>	---	<i>SW</i>	---	<i>SW</i>	---	STORM WATER
---	<i>G</i>	---	<i>G</i>	---	<i>G</i>	---	GAS
<u>OTHER</u>							
---	---	---	---	---	---	---	RIGHT-OF-WAY
---	---	---	---	---	---	---	CENTER LINE OF ROAD
---	---	---	---	---	---	---	EDGE OF PAVEMENT
---	---	---	---	---	---	---	WATER WAY
---	---	---	---	---	---	---	GUIDE RAIL
---	---	---	---	---	---	---	MUNICIPAL BOUNDARY

---	---	---	---	---	---	---	---	-PROPOSED
								UTILITY POLE - CUSTOMER - OWNED
								DOWN GUY - ANCHOR
								DOWN GUY - SIDEWALK
								HANDHOLE - FIBER OPTIC
								CORE BORE, UTILITY IDENTIFICATION
								EXCAVATION
-EXISTING								
								UTILITY POLE
								HANDHOLE - TELEPHONE
								HANDHOLE - CABLE TV
								HANDHOLE - ELECTRIC
								HANDHOLE - UNKNOWN
								STORM WATER GRATE
								MANHOLE - TELEPHONE
								MANHOLE - CABLE TV
								MANHOLE - ELECTRIC
								MANHOLE - SANITATION
								MANHOLE - WATER
								MANHOLE - UNKNOWN
								METER/VALVE - GAS
								FIRE HYDRANT
								TRAFFIC SIGNAL
								TRAFFIC SIGN
								RAILROAD CROSSING - SIGN
								RAILROAD CROSSING - SIGNAL
								RAILROAD CROSSING - GATE
								BENCHMARK
								CULVERT
								BRIDGE

ABANDONED	ABD	LINEAR FOOT	LT
ASPHALT	ASPH	LOW POINT OF SAG	LOP
AVENUE	AVE	MANHOLE	MH
BEARING	BRG	MILES PER HOUR	MPH
BENCH MARK	BM	MONUMENT	MON
BITUMINOUS	BIT	OFFSET	OFF
BLACK	BLK	ORANGE	ORN
BOULEVARD	BLVD	OUTSIDE DIAMETER	OD
BRIDGE OCCUPANCY LICENSE	BOL	PAVEMENT	PAV'T
CAST IRON PIPE	CIP	PERMANENT	PERM
CENTERLINE	CL	POINT	PT
CONCRETE PIPE	CP	POWER POLE	PP
CONDUIT	COND	PROJECT	PROJ
CONTROL POINT	CTP	PROPERTY LINE	PL
COORDINATE	COORD	RAILWAY	RW
CORRUGATED METAL PIPE	CMP	RAILROAD	RR
COUNTY	CO	REINFORCED CONCRETE PIPE	RCP
DEGREE	DEG OR °	REVISION	REV
DIAMETER	DIA OR Ø	RIGHT-OF-WAY	R/W
DRIVE	DR	ROAD	RD
EDGE OF CONCRETE	EC	ROUTE	RTE
EDGE OF PAVEMENT	EOP	SANITARY SEWER	SAN S
ELEVATION	ELEV	SEGMENT	SEG
EXISTING	EXIST	SHEET	SHT
FEET	FT OR '	SHOULDER	SHLDR
FIBER OPTIC	FO	SIDEWALK	SDWK
FIBER OPTIC CABLE	FOC	SOUTHERN YELLOW PINE	SYP
FIGURE	FIG	STANDARD	STD
FINISHED GRADE	FG	STATE ROUTE	SR
FIRE HYDRANT	FH	STATION	STA
FOOT	FT OR '	STREET	ST
GENERAL	GENL	STEEL	STL
GUIDE RAIL	GR	SUBSURFACE UTILITY ENGINEERING	SUE
HANDHOLE	HH	TELEPHONE POLE	TP
HEIGHT OF ATTACHMENT	HOA	TEMPORARY	TEMP
HIGHWAY	HWY	TEST PIT	TP
HIGHWAY OCCUPANCY PERMIT	HOP	TOP OF CURB	TC
HORIZONTAL	HOR	TOP OF RAIL	TR
HORIZONTAL DIRECTIONAL DRILL	HDD	TYPICAL	TYP
INCH	IN OR "	VARIABLE	VAR
INSIDE DIAMETER	ID	VERTICAL	VERT
IRON PIPE	IP	WALK	WK
LENGTH	LGTH	WORK ZONE TRAFFIC CONTROL	WZTC
LIMITED ACCESS	LA		

LOCATION DATA					SHEET NO.  004 OF 11
DISTRICT	COUNTY	ROUTE	SEGMENT	OFFSET	
4	40	ROAD_NUMBER	0010	1186	
PROJECT NAME: WB301-RT3-SEC4-HANL					
ORIGINAL DATE: ----					
DRAWING NAME: Plan View					
DRAWING SCALE:  Feet					



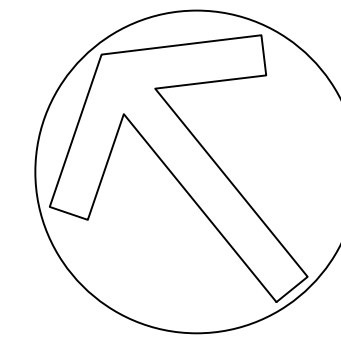
POLE B  
EXISTING POLE  
POLE ID  
HOA:  
41.258846,  
-75.884854

41.258746,  
-75.884731

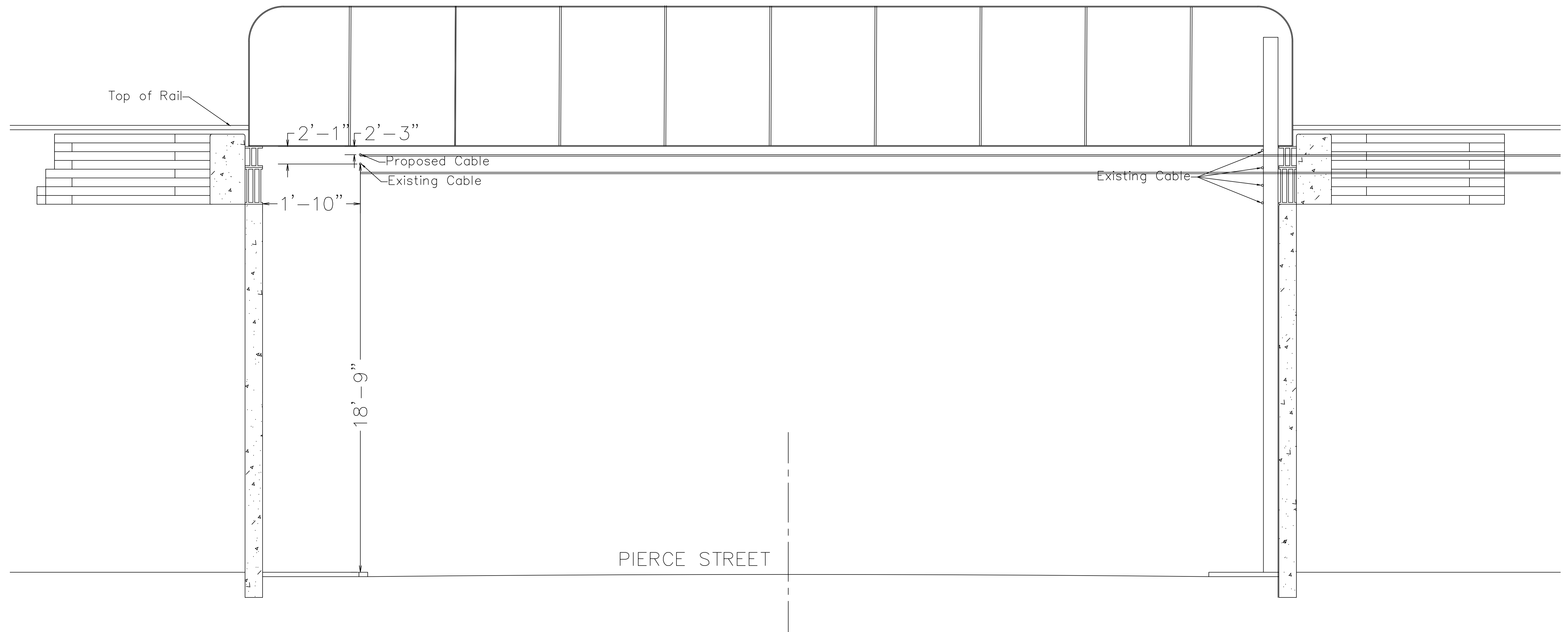
41.258724,  
-75.884713

POLE A  
EXISTING POLE  
POLE ID  
HOA:  
41.258509, -75.884511

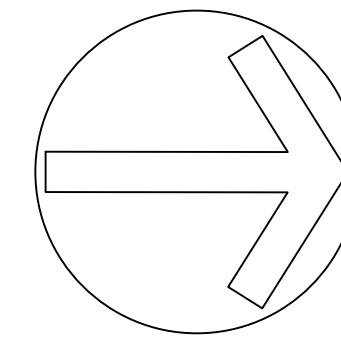
PROPOSED  
10M STRAND  
864 FIBER OPTIC CABLE



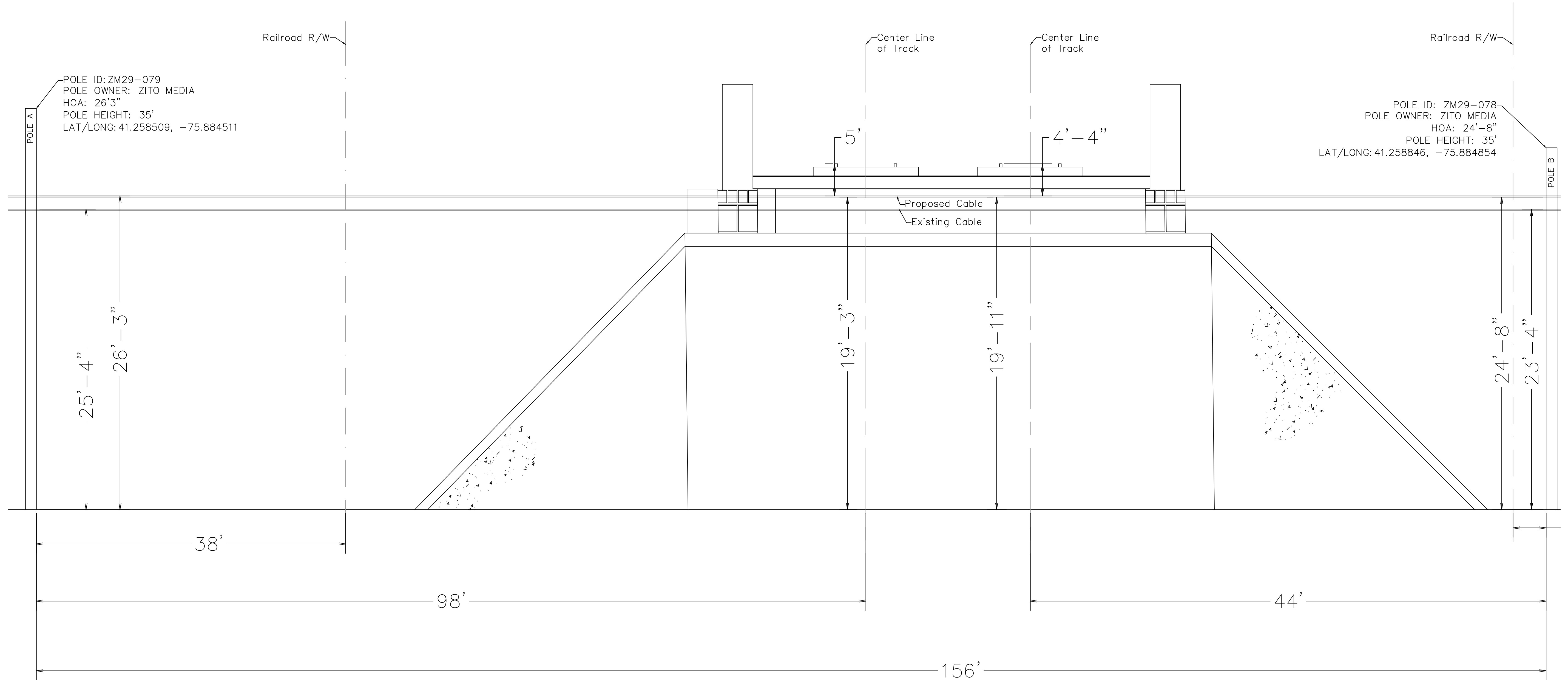
LOCATION DATA					SHEET NO.
DISTRICT	COUNTY	ROUTE	SEGMENT	OFFSET	
4	40	ROAD_NUMBER	0010	1186	005 OF 11
PROJECT NAME: WB301-RT3-SEC4-HANL					
ORIGINAL DATE: ----					
DRAWING NAME: Section View(s)					
DRAWING SCALE: 0 5 10 Feet					



SECTION VIEW 1  
FACING NORTH  
SCALE: 1:3



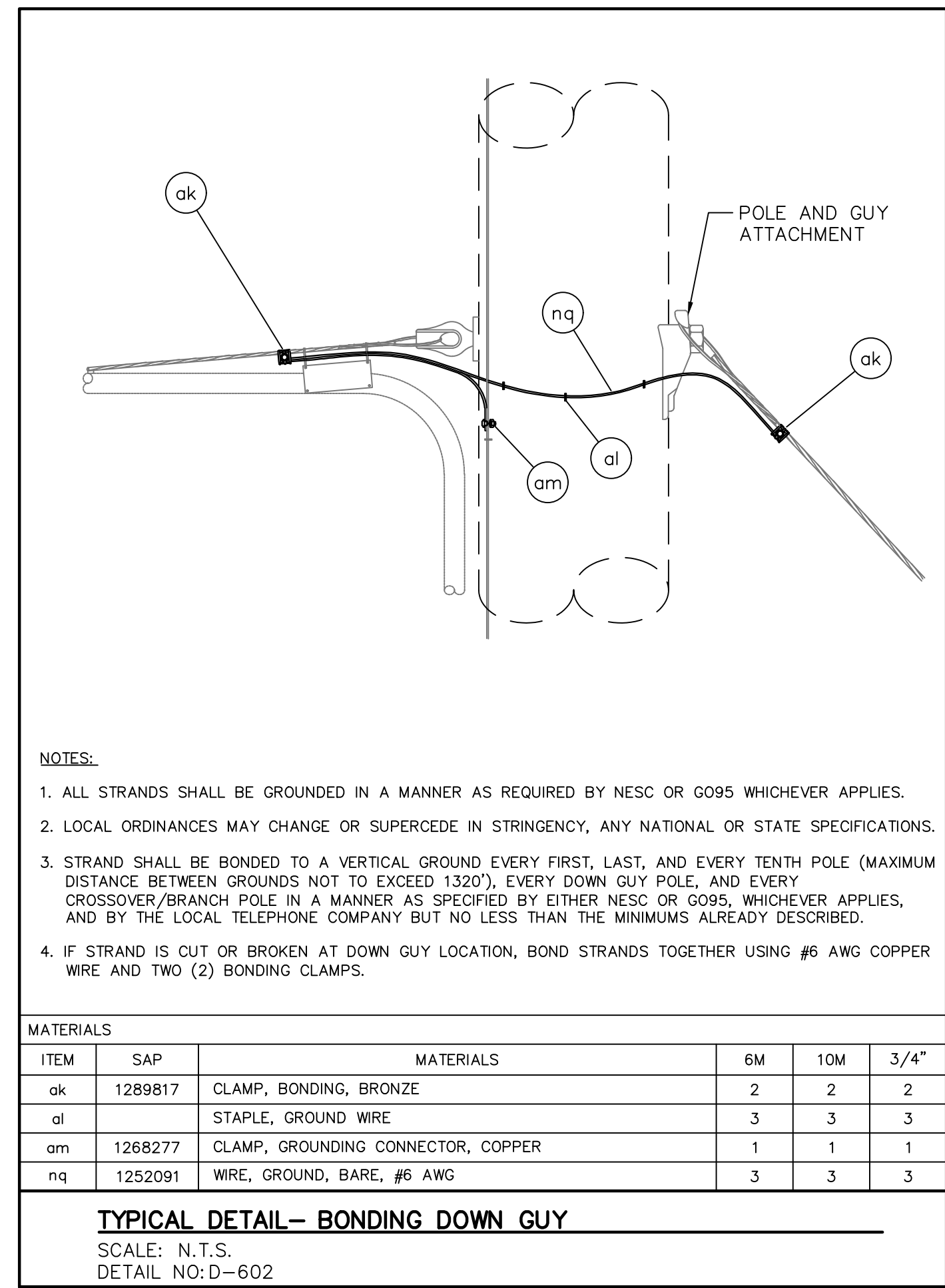
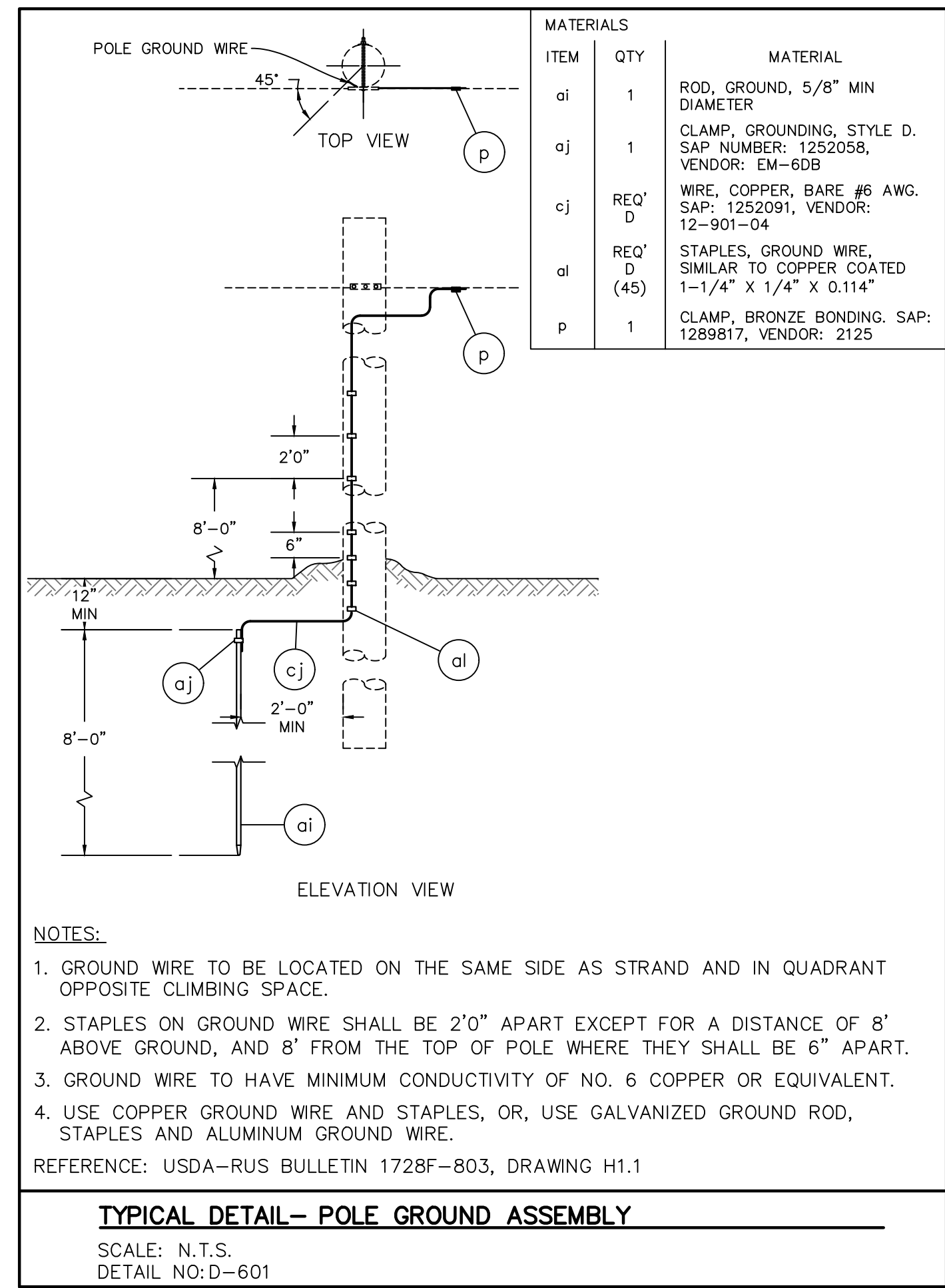
LOCATION DATA					SHEET NO.  006 OF 11
DISTRICT	COUNTY	ROUTE	SEGMENT	OFFSET	
4	40	ROAD_NUMBER	0010	1186	
PROJECT NAME: WB301-RT3-SEC4-HANL					
ORIGINAL DATE: ----					
DRAWING NAME: Section View(s)					
DRAWING SCALE:  Feet					

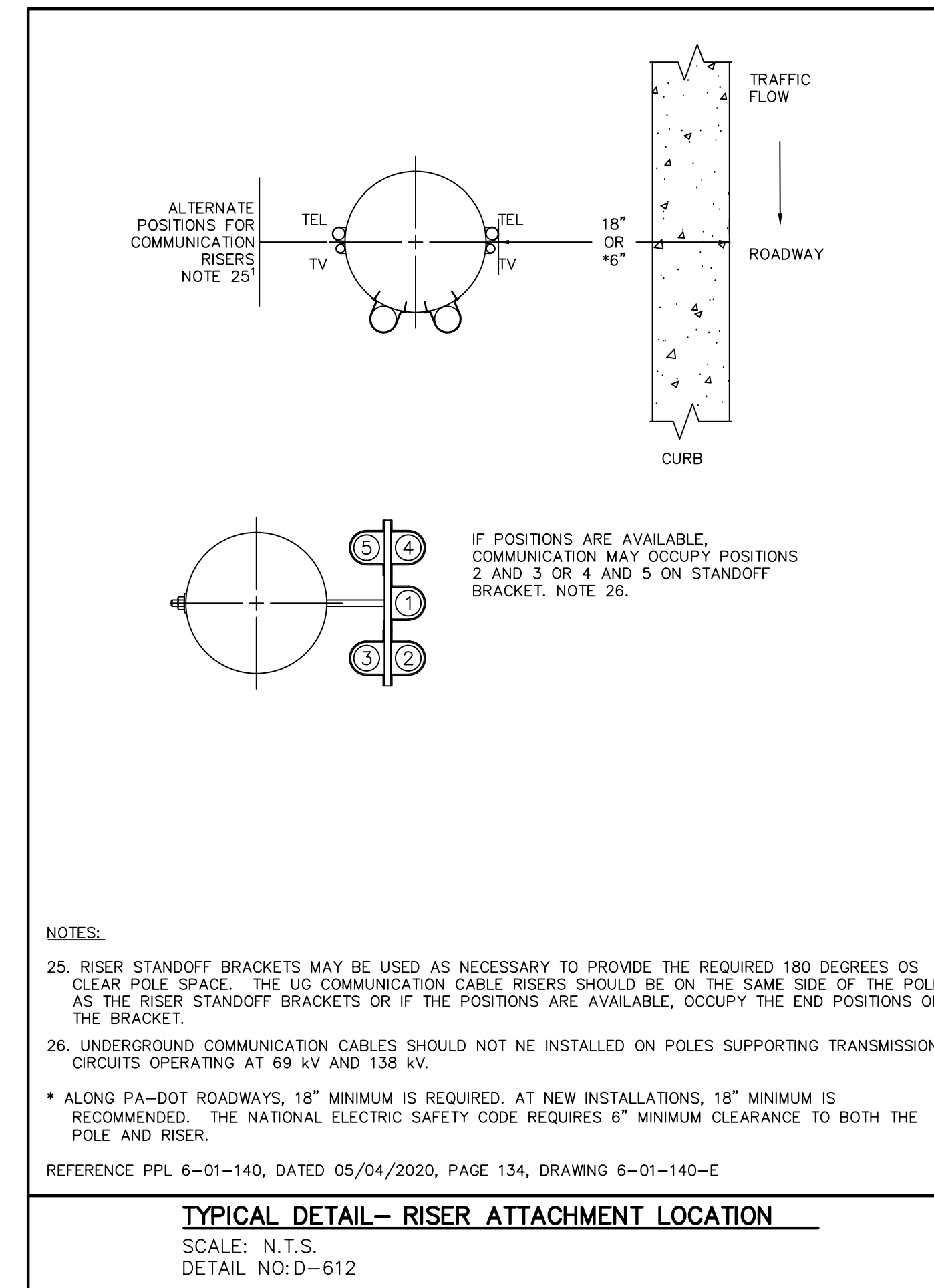
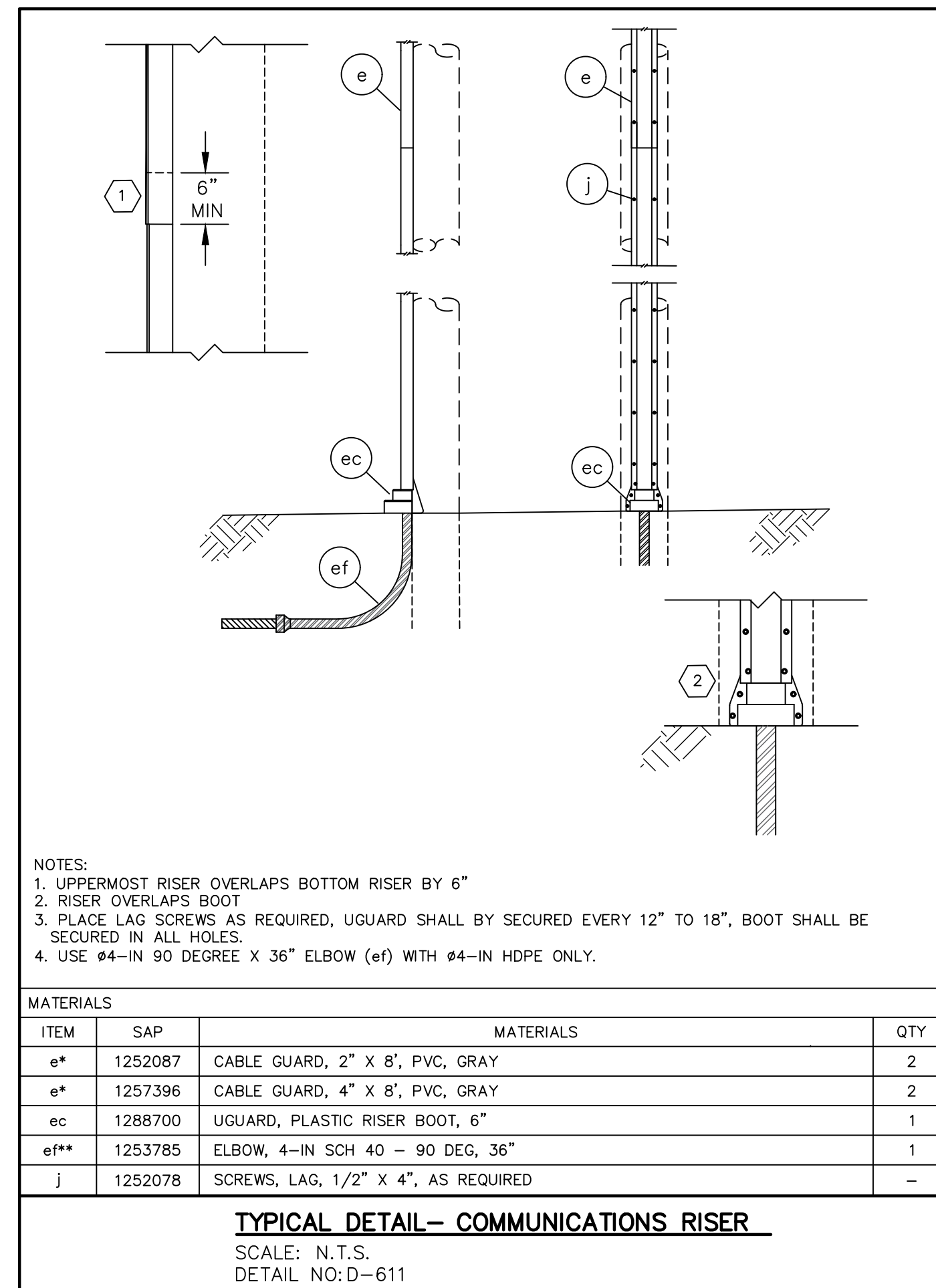


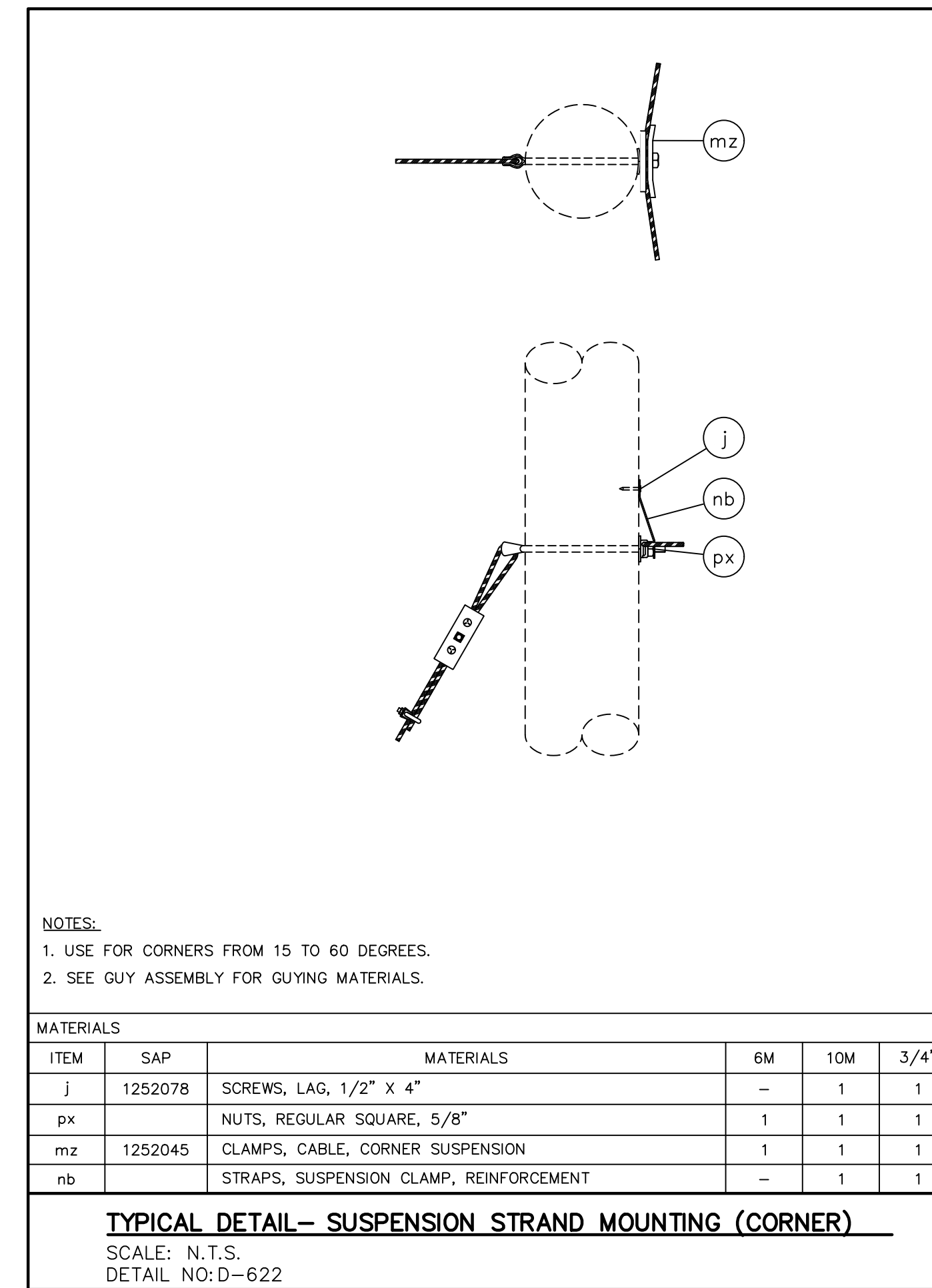
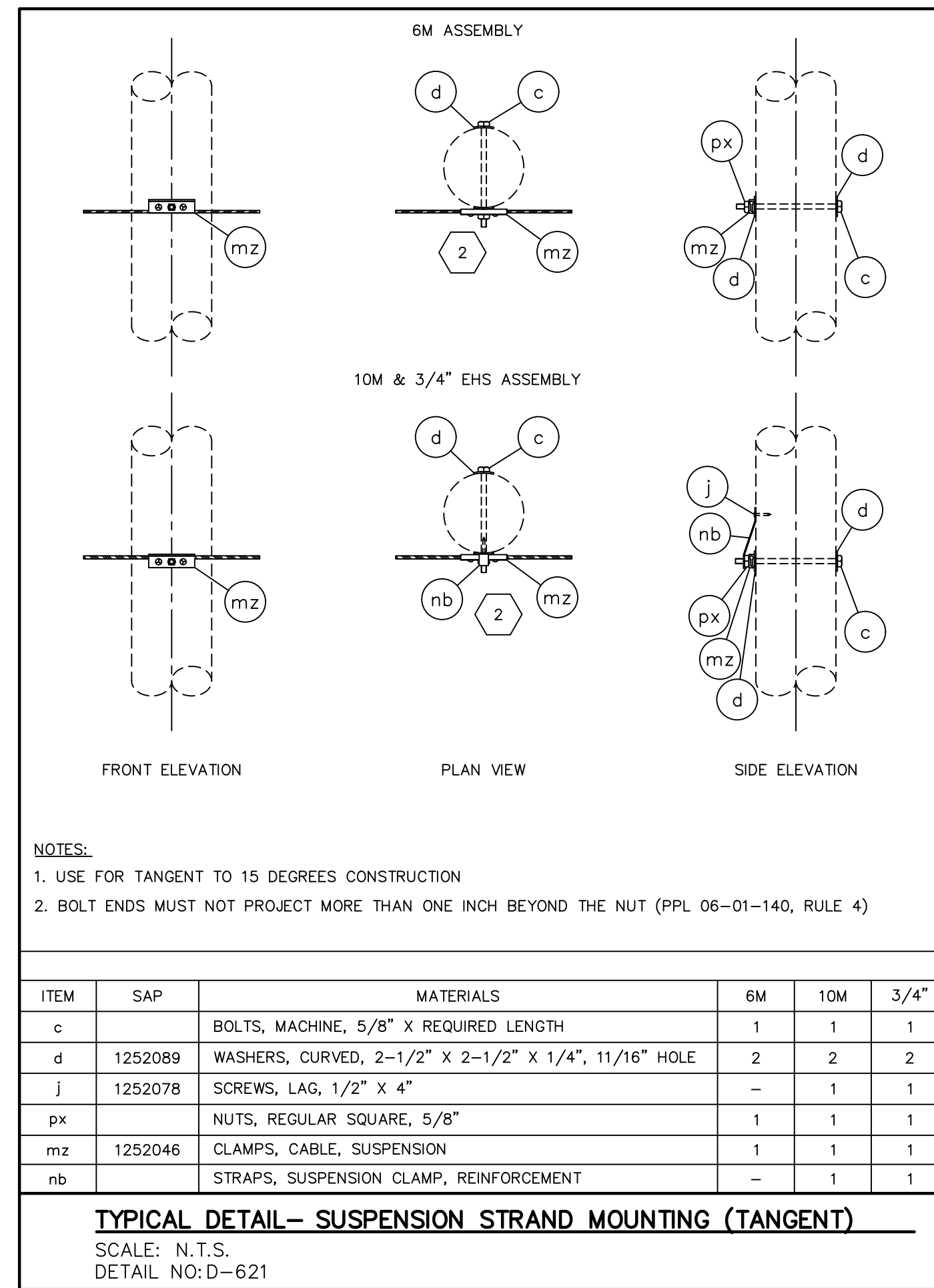
POLE ID: ZM29-079  
POLE OWNER: ZITO MEDIA  
HOA: 26'3"  
POLE HEIGHT: 35'  
LAT/LONG: 41.258509, -75.884511

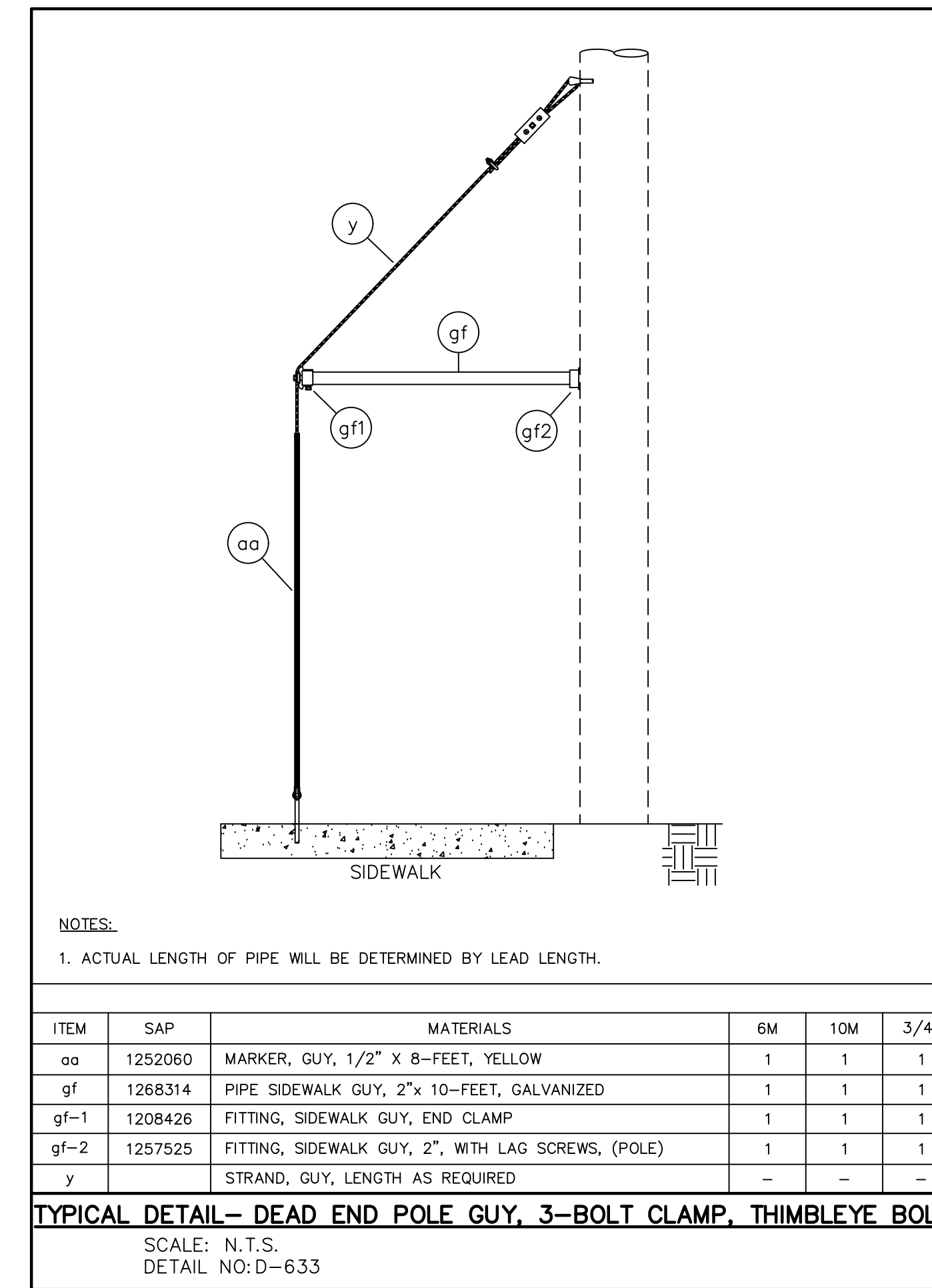
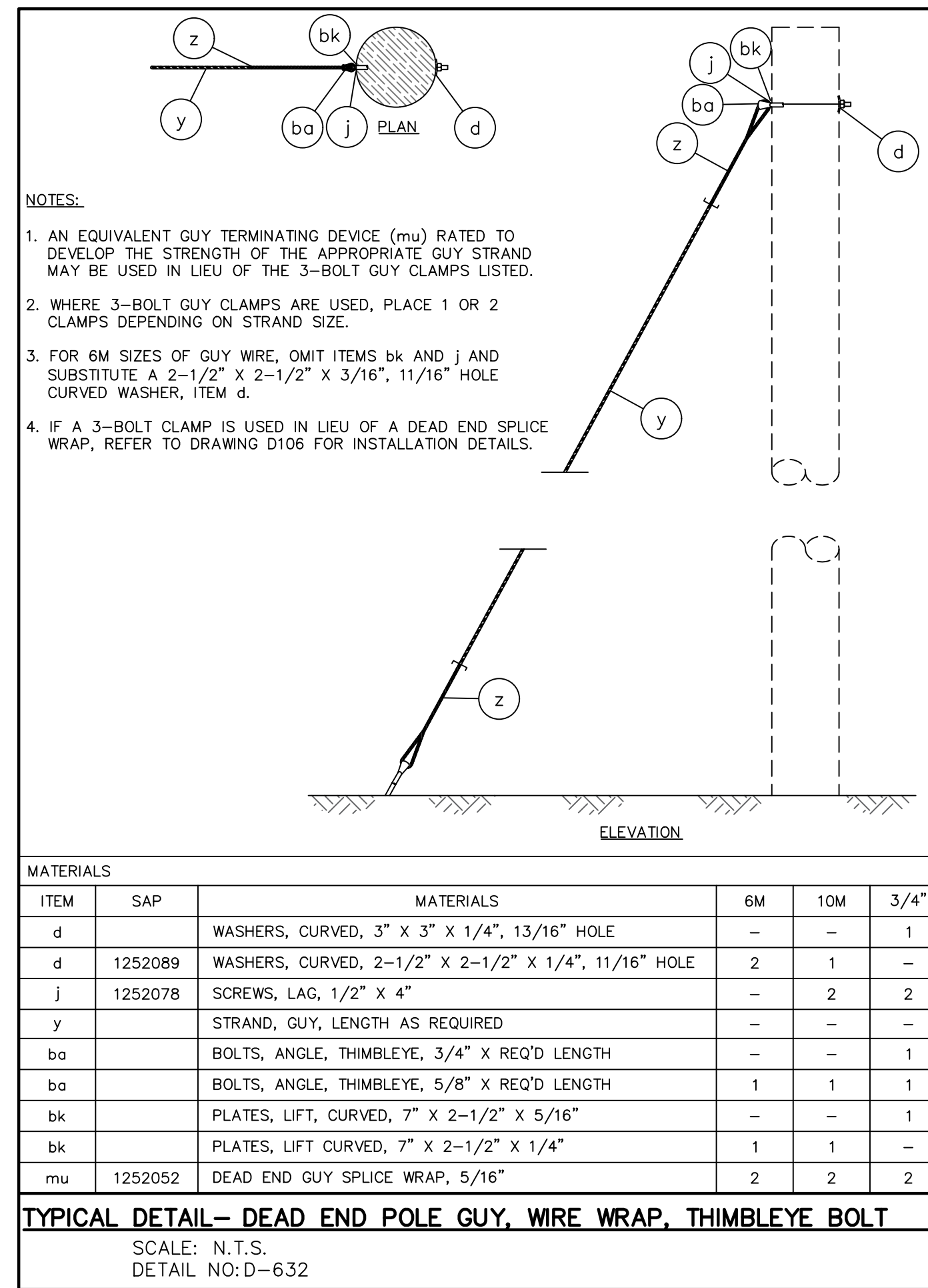
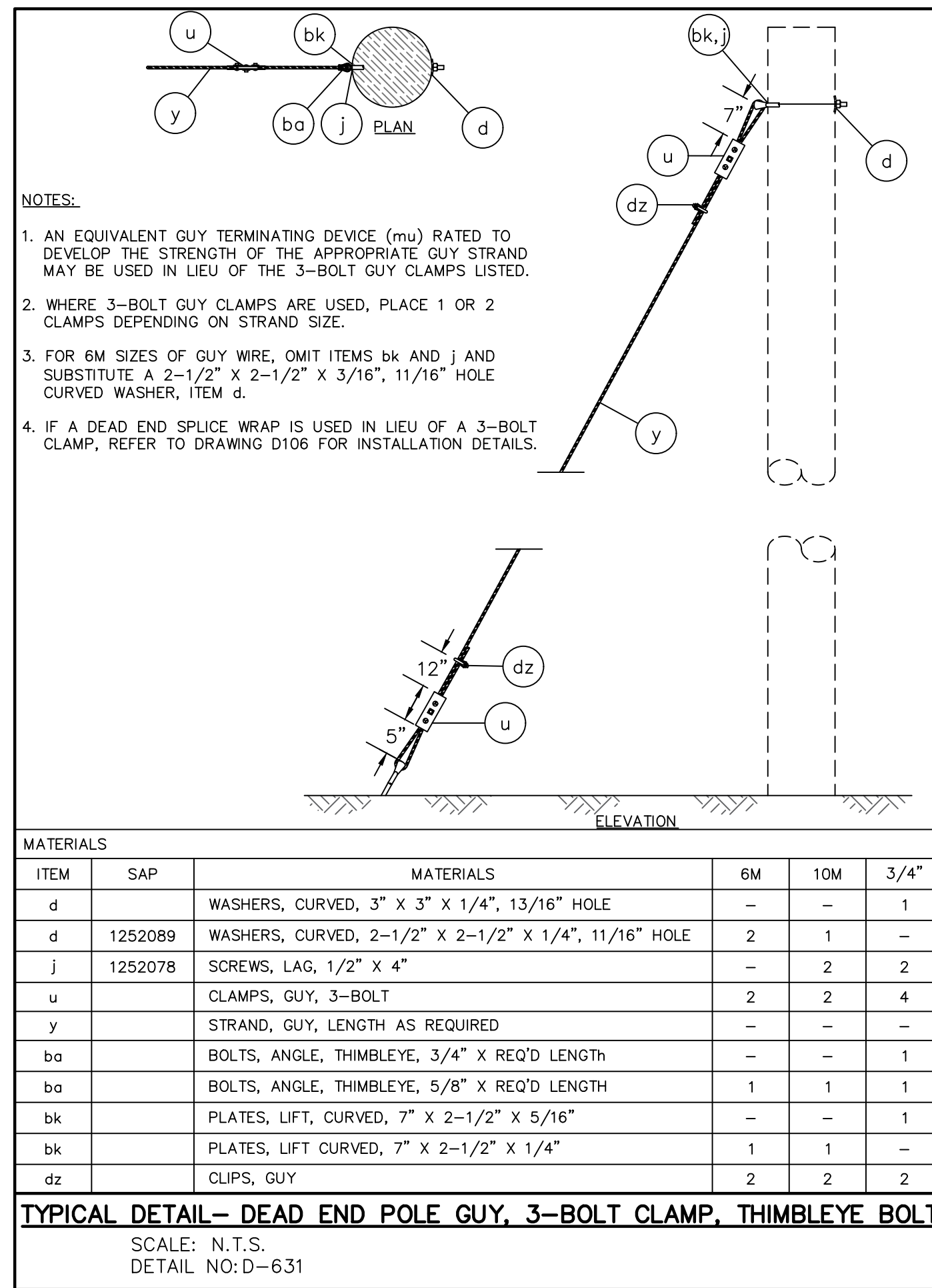
POLE ID: ZM29-078  
POLE OWNER: ZITO MEDIA  
HOA: 24'-8"  
POLE HEIGHT: 35'  
LAT/LONG: 41.258846, -75.884854

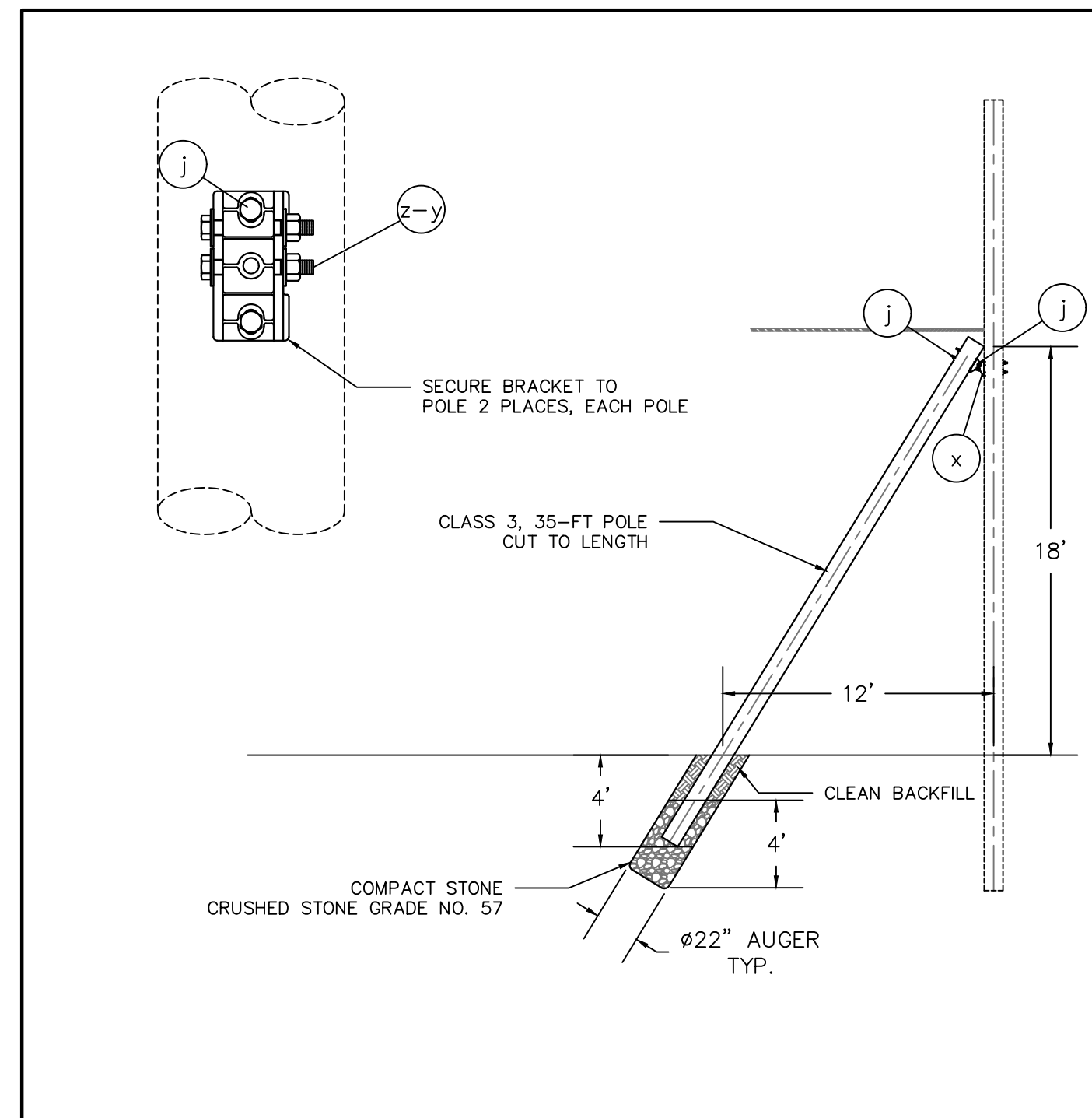
SECTION VIEW 2  
FACING SOUTH WEST  
SCALE: 1:4





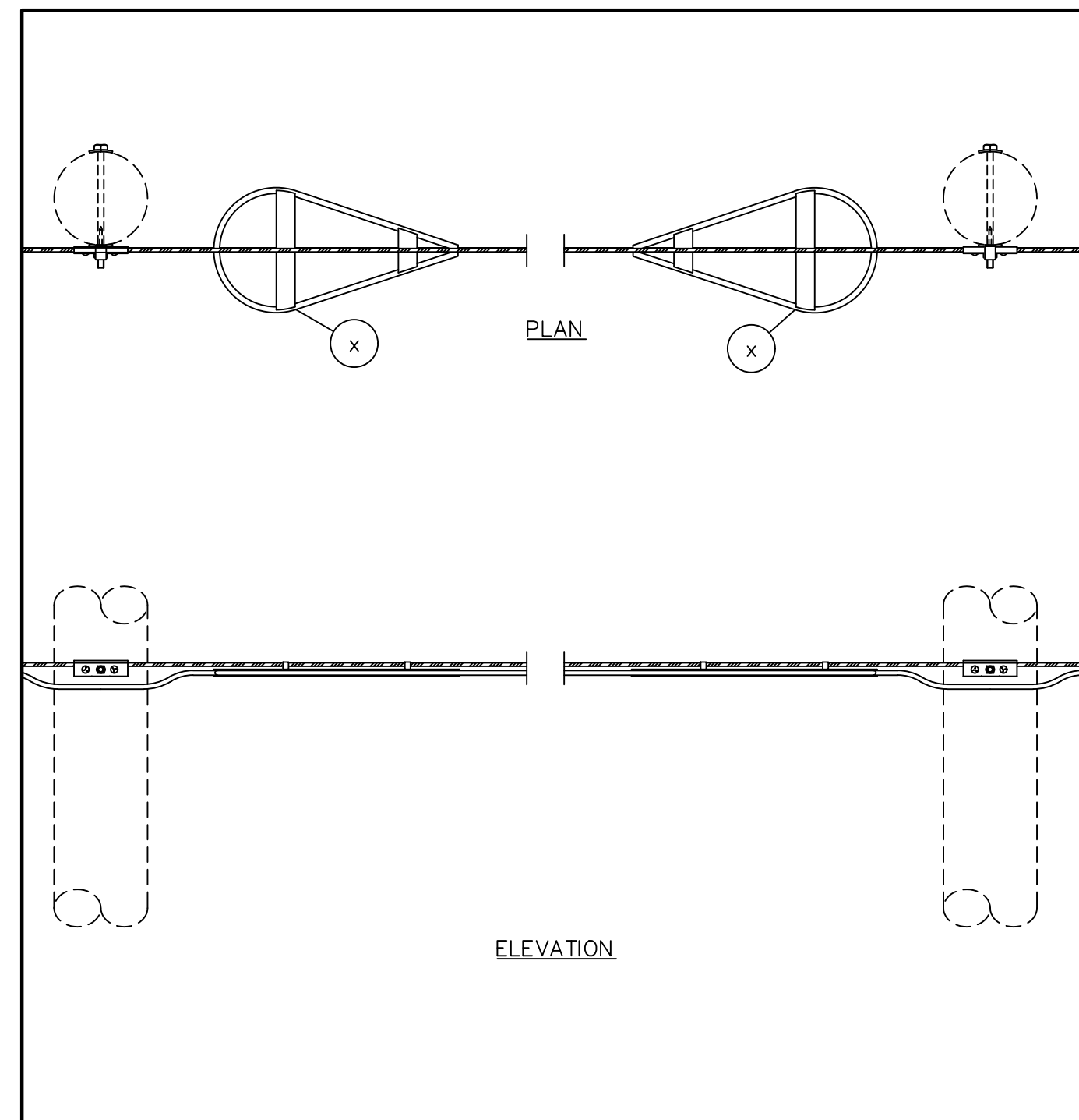






MATERIALS			
ITEMS	SAP	MATERIALS	QTY
x		POLE BRACE CONNECTOR BRACKET (MACLEAN POWER- PAX128)	1
y		HEX SCREW, 3/4"-10 X 5-1/2", 3/4"-10 UNC HEX NUT	4
z		WASHERS, STRAIGHT, 1" X 3/4"	8
d	1252089	WASHERS, CURVED, 2-1/2" X 2-1/2" X 1/4", 11/16" HOLE	4
j	1252078	SCREWS, LAG, 1/2" X 4"	4

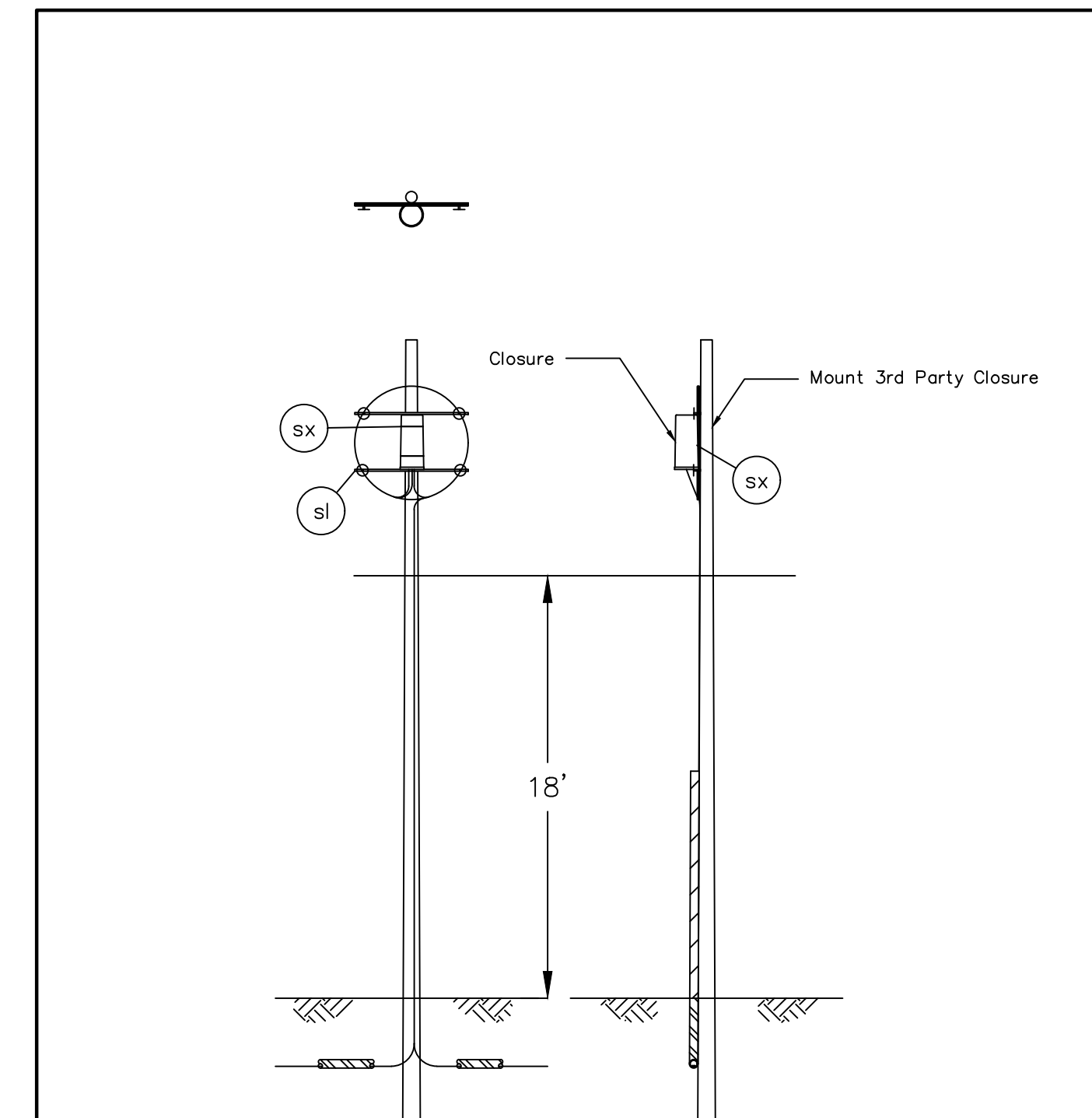
**TYPICAL DETAIL- PUSH POLE**  
SCALE: N.T.S.  
DETAIL NO:D-634



**NOTES:**  
1. ALL AERIAL MOUNTED SLACK LOOPS SHALL BE MOUNTED IN SNOW SHOES.  
2. DISTANCE BETWEEN SNOW SHOES SHALL BE DETERMINED IN THE FIELD WITH SUFFICIENT DISTANCE BETWEEN SNOW SHOES TO MAINTAIN TENSION ON CABLE.

MATERIALS						
ITEMS	SAP	MATERIALS	6M	10M	3/4"	
X	1268275	SNOW SHOE, CABLE SLACK STORAGE, 30" (PAIR)	1	1	1	

**TYPICAL DETAIL- AERIAL SLACK**  
SCALE: N.T.S.  
DETAIL NO:D-641



MATERIALS			
ITEMS	SAP	MATERIALS	
sl	-	8003569- DUAL LONG CROSSARMS WITH SPOOLS	
sx	-	BANDING STRAPS, OR CLOSURE MOUNTING KIT	

**TYPICAL DETAIL- SLACK POLE**  
SCALE: N.T.S.  
DETAIL NO:D-642