

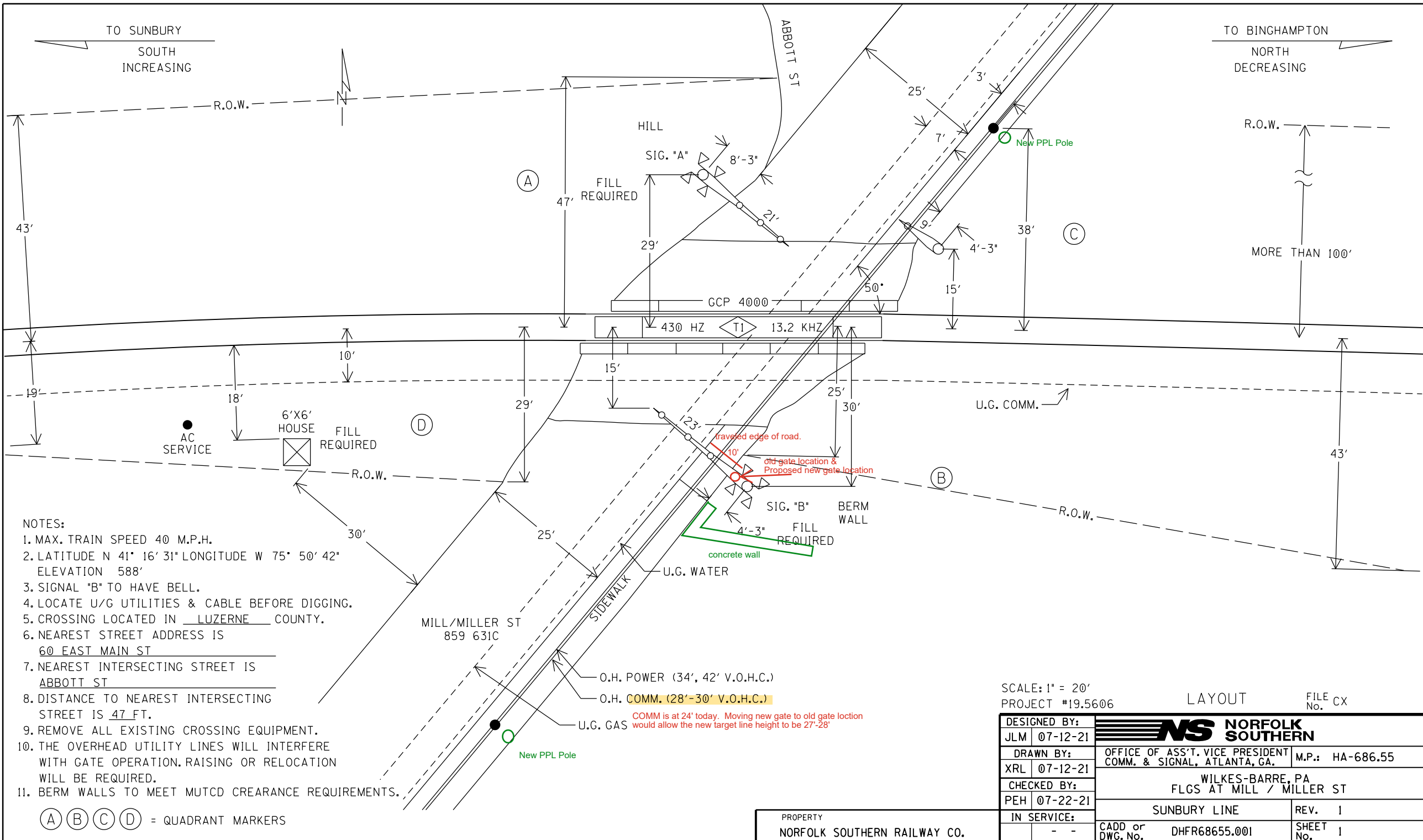
Harold Penn Jr.  
Manager Highway Crossing  
Engineering  
Norfolk Southern Railway  
650 W Peachtree Street  
Atlanta, GA 30308  
harold.penn@nscorp.com  
(404) 558-3730  
January 29, 2026

Secretary Matthew Homsher  
Pennsylvania Public Utility  
Commission Commonwealth  
Keystone Building 400 North Street,  
Second Floor Harrisburg, PA 17120

**Subject: A-2020-3018936, Rail Plan Miller St (DOT 859631C)**

Attached is a sketch of the proposed layout of Signal B in quadrant B of Miller St. We propose to place the new Signal B exactly where the old Signal B is located. This sketch has been emailed to all parties on this docket.

Sincerely,  
Harold Penn Jr.  
Manager Highway Crossing  
Engineering



**NOTES:**

1. MAX. TRAIN SPEED 40 M.P.H.
2. LATITUDE N 41° 16' 31" LONGITUDE W 75° 50' 42" ELEVATION 588'
3. SIGNAL "B" TO HAVE BELL.
4. LOCATE U/G UTILITIES & CABLE BEFORE DIGGING.
5. CROSSING LOCATED IN LUZERNE COUNTY.
6. NEAREST STREET ADDRESS IS 60 EAST MAIN ST
7. NEAREST INTERSECTING STREET IS ABBOTT ST
8. DISTANCE TO NEAREST INTERSECTING STREET IS 47 FT.
9. REMOVE ALL EXISTING CROSSING EQUIPMENT.
10. THE OVERHEAD UTILITY LINES WILL INTERFERE WITH GATE OPERATION. RAISING OR RELOCATION WILL BE REQUIRED.
11. BERM WALLS TO MEET MUTCD CLEARANCE REQUIREMENTS.

(A) (B) (C) (D) = QUADRANT MARKERS

SCALE: 1" = 20'  
PROJECT #19.5606

LAYOUT FILE CX No.

DESIGNED BY: JLM 07-12-21			M.P.: HA-686.55
DRAWN BY: XRL 07-12-21			OFFICE OF ASS'T. VICE PRESIDENT COMM. & SIGNAL, ATLANTA, GA.
CHECKED BY: PEH 07-22-21	WILKES-BARRE, PA FLGS AT MILL / MILLER ST		
IN SERVICE: - -	SUNBURY LINE	REV. 1	SHEET 1
	CADD or DWG. No. DHFR68655.001		

PROPERTY  
NORFOLK SOUTHERN RAILWAY CO.