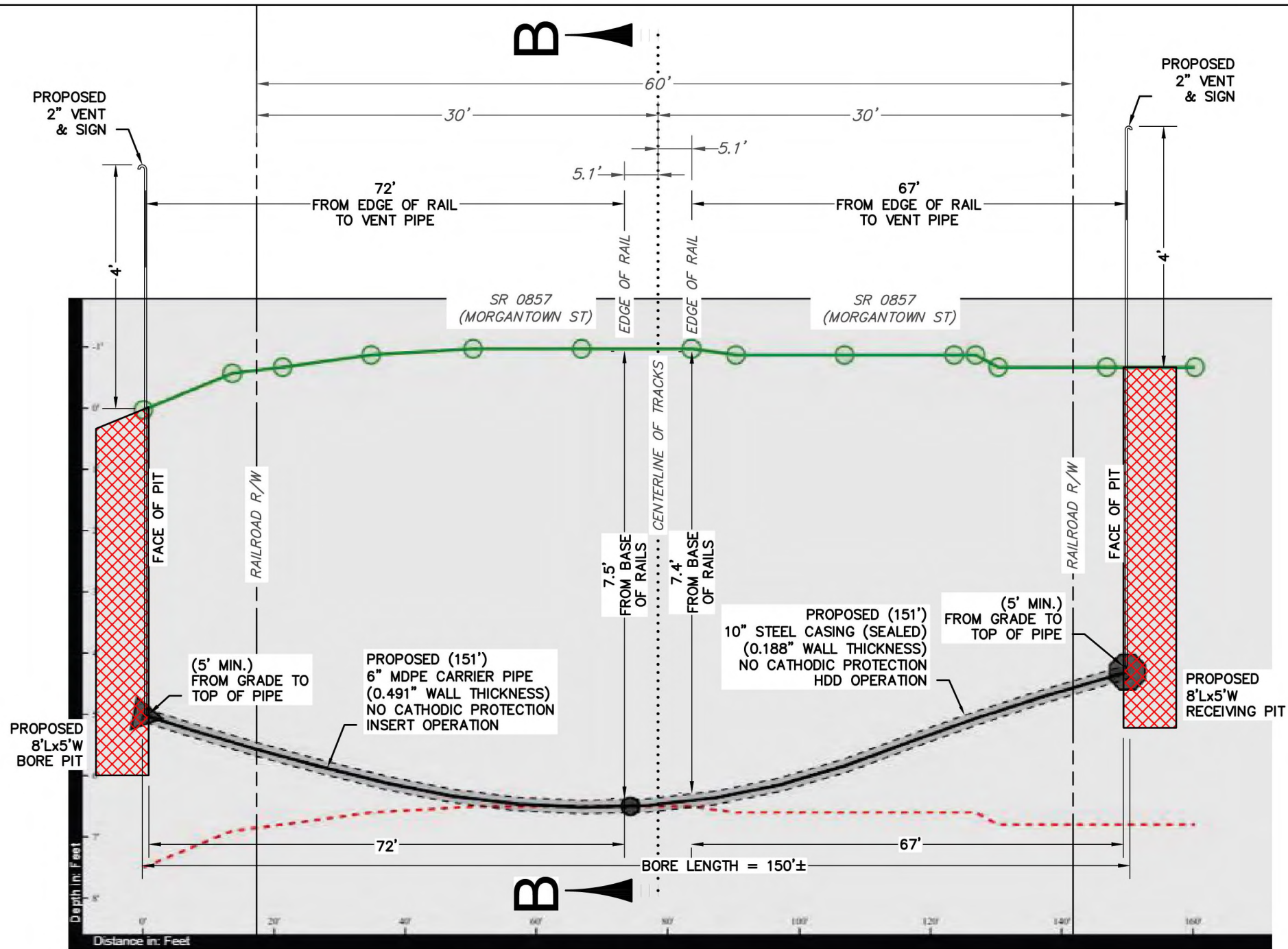
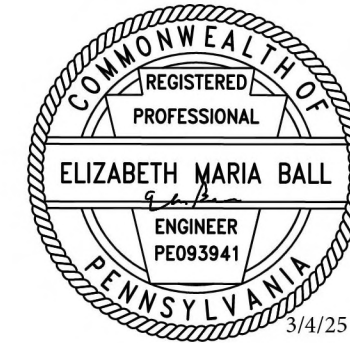


CERTIFIED CORRECT PLANS
Will M. A. P.E.
 Professional Engineer
 Approved by Bureau of Technical Utility Services
PA PUBLIC UTILITY COMMISSION
 ATTEST *Matthew L. Hender*
 Secretary



PROFILE VIEW A-A

- NOTES:**
1. THE UTILITIES SHOWN ON THESE PLANS WERE DERIVED FROM FIELD OBSERVATION. THE ACTUAL LOCATION AND DEPTH OF THE UTILITY LINES AND OTHER FEATURES MAY VARY. IT IS THE RESPONSIBILITY OF THE CONTRACTOR TO IDENTIFY, VERIFY, AND SAFELY LOCATE ALL UTILITIES AND FEATURES FOR THIS PROJECT AT THE TIME OF CONSTRUCTION.
 2. DIGITAL MAP IS IN PA SOUTH ZONE, STATE PLANE COORDINATE SYSTEM, NAD 1983. VERTICAL DATUM 1988.

- CONTRACTOR NOTES:**
1. CONTRACTOR SHALL FOLLOW ALL REQUIREMENTS FOR PIPELINE OCCUPANCY OF: CARLOAD EXPRESS INC. SPECIFICATIONS. (ALLEGHENY VALLEY RAILROAD COMPANY)
 2. ALL OPEN EXCAVATION SHALL BE PROTECTED WITH FENCING.
 3. DO NOT STORE MATERIALS OF EQUIPMENT WITHIN 25 FEET OF THE CENTERLINE OF AN ACTIVE TRACK.
 4. NO WORK IS ALLOWED WITHIN 25 FEET OF THE NEAREST TRACK UNLESS PROTECTED BY A RAILROAD FLAGMAN. WHEN TRAINS APPROACH THE WORK SITE, ALL ACTIVITY WITHIN 50 FEET OF THE TRACK SHALL STOP UNTIL THE ENTIRE LENGTH OF THE TRAIN HAS PASSED THE WORK SITE.

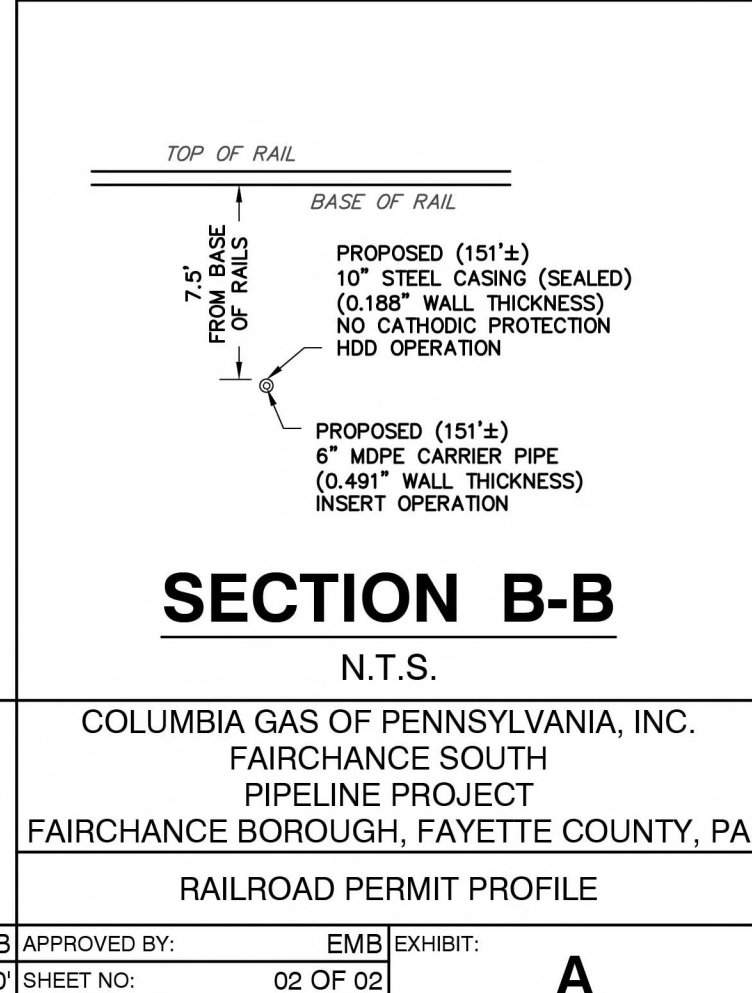
N.T.S.

KEYSTONE
 CONSULTANTS, LLC
 FOSTER PLAZA 10
 680 ANDERSEN DRIVE, SUIT 400
 PITTSBURGH, PA 15220
 Ph: (412) 278-2100
 FAX: (412) 278-2126
 www.keystoneconsultants.net
 SCALE IN FEET

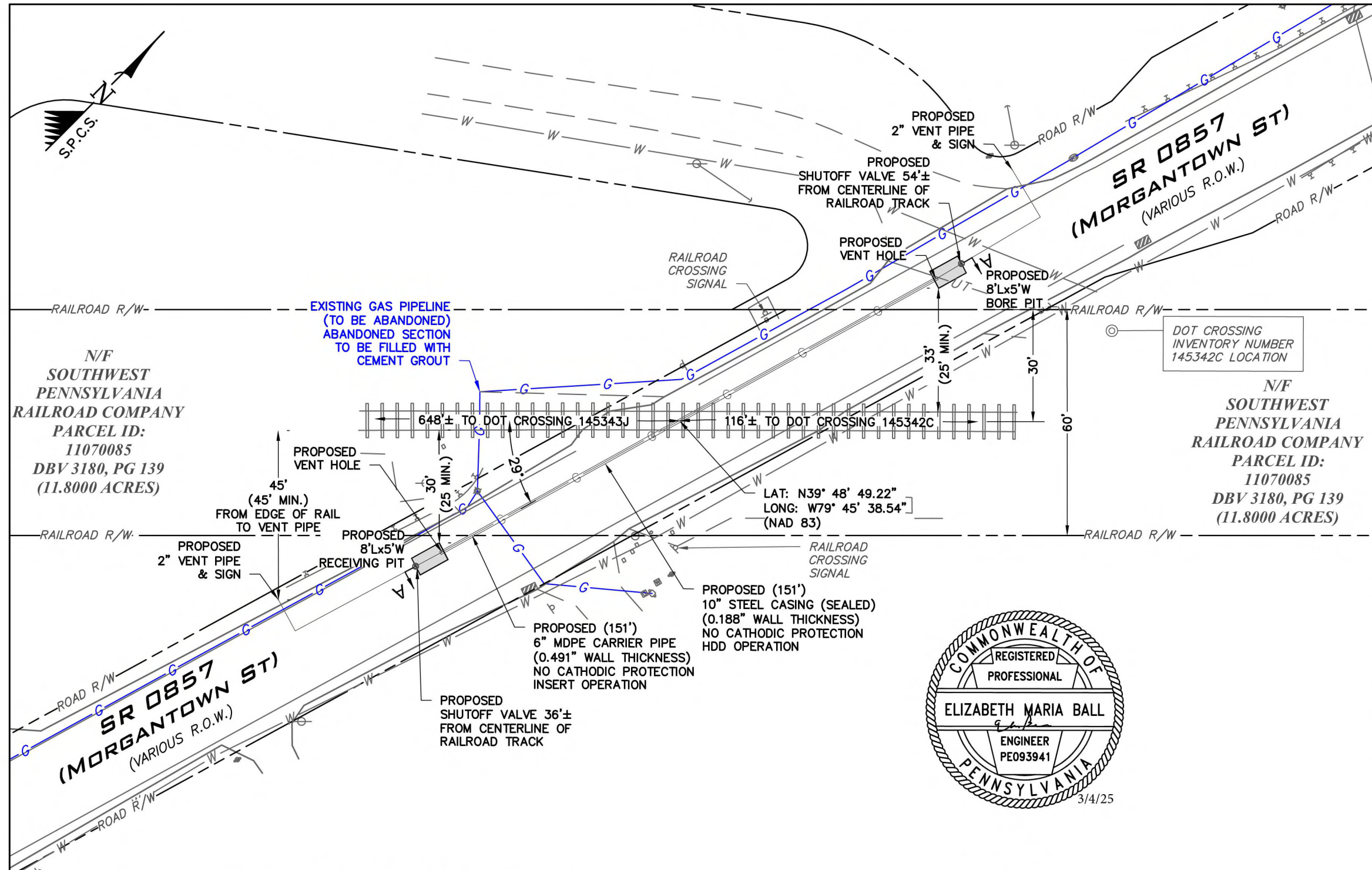
DISCLAIMER:
 ALL MATERIAL SPECIFICATIONS, CONSTRUCTION METHODS, CALCULATIONS, AND COMPUTATIONS HAVE BEEN PROVIDED BY COLUMBIA GAS OF PA, AND/OR CARLOAD EXPRESS INC. (SOUTHWEST PENNSYLVANIA RAILROAD COMPANY) KEYSTONE CONSULTANTS, LLC IS NOT CERTIFYING PIPELINE DESIGN OR CONSTRUCTION THAT WILL TAKE PLACE FOLLOWING CARLOAD EXPRESS INC. (SOUTHWEST PENNSYLVANIA RAILROAD COMPANY) APPROVAL OF THIS EXHIBIT DRAWING.



4000 ENERGY DRIVE BRIDGEVILLE, PA 15017		DRAWN BY: GDC		CHECKED BY: EMB		APPROVED BY: EMB		EXHIBIT: A	
DATE: FEBRUARY 27, 2025		DWG SCALE: 1"=20'		SHEET NO: 02 OF 02					



SEE PLAN SHEET 1 OF 2



CONTRACTOR ADDITIONAL NOTES:
 ALL PIPELINES (EXCEPT THOSE IN STREETS WHERE IT WOULD BE PRACTICAL TO DO SO) SHALL BE PROMINENTLY MARKED AT THE RIGHT-OF-WAY LINES (ON BOTH SIDES OF THE TRACK CROSSINGS) BY DURABLE, WEATHERPROOF SIGNS LOCATED OVER THE CENTERLINE OF THE PIPE.

SIGNS SHALL SHOW THE FOLLOWING:

- 1) NAME AND ADDRESS OF OWNER.
- 2) CONTENTS OF PIPE.
- 3) PRESSURE IN PIPE.
- 4) PIPE DEPTH BELOW GRADE AT POINT OF SIGN.
- 5) EMERGENCY TELEPHONE NUMBER IN EVENT OF PIPE RUPTURE.



- NOTES:**
1. THE UTILITIES SHOWN ON THESE PLANS WERE DERIVED FROM FIELD OBSERVATION. THE ACTUAL LOCATION AND DEPTH OF THE UTILITY LINES AND OTHER FEATURES MAY VARY. IT IS THE RESPONSIBILITY OF THE CONTRACTOR TO IDENTIFY, VERIFY, AND SAFELY LOCATE ALL UTILITIES AND FEATURES FOR THIS PROJECT AT THE TIME OF CONSTRUCTION.
 2. DIGITAL MAP IS IN PA SOUTH ZONE, STATE PLANE COORDINATE SYSTEM, NAD 1983. VERTICAL DATUM 1988.

- CONTRACTOR NOTES:**
1. CONTRACTOR SHALL FOLLOW ALL REQUIREMENTS FOR PIPELINE OCCUPANCY OF: CARLOAD EXPRESS INC. SPECIFICATIONS. (ALLEGHENY VALLEY RAILROAD COMPANY)
 2. ALL OPEN EXCAVATION SHALL BE PROTECTED WITH FENCING.
 3. DO NOT STORE MATERIALS OF EQUIPMENT WITHIN 25 FEET OF THE CENTERLINE OF AN ACTIVE TRACK.
 4. NO WORK IS ALLOWED WITHIN 25 FEET OF THE NEAREST TRACK UNLESS PROTECTED BY A RAILROAD FLAGMAN. WHEN TRAINS APPROACH THE WORK SITE, ALL ACTIVITY WITHIN 50 FEET OF THE TRACK SHALL STOP UNTIL THE ENTIRE LENGTH OF THE TRAIN HAS PASSED THE WORK SITE.

KEYSTONE
 CONSULTANTS, LLC

FOSTER PLAZA 10
 680 ANDERSEN DRIVE, SUIT 400
 PITTSBURGH, PA 15220
 Ph: (412) 278-2100
 FAX: (412) 278-2126
 www.keystoneconsultants.net

SCALE IN FEET

DISCLAIMER:
 ALL MATERIAL SPECIFICATIONS, CONSTRUCTION METHODS, CALCULATIONS, AND COMPUTATIONS HAVE BEEN PROVIDED BY COLUMBIA GAS OF PA, AND/OR CARLOAD EXPRESS INC. (SOUTHWEST PENNSYLVANIA RAILROAD COMPANY) KEYSTONE CONSULTANTS, LLC IS NOT CERTIFYING PIPELINE DESIGN OR CONSTRUCTION THAT WILL TAKE PLACE FOLLOWING CARLOAD EXPRESS INC. (SOUTHWEST PENNSYLVANIA RAILROAD COMPANY) APPROVAL OF THIS EXHIBIT DRAWING.

CERTIFIED CORRECT PLANS

Will M. D. P.E.
 Professional Engineer
 Approved by Bureau of Technical Utility Services

PA PUBLIC UTILITY COMMISSION

ATTEST *Matthew L. Hander*
 Secretary

Columbia Gas of Pennsylvania
 A NiSource Company

4000 ENERGY DRIVE
 BRIDGEVILLE, PA 15017

COLUMBIA GAS OF PENNSYLVANIA, INC.
FAIRCHANCE SOUTH PIPELINE PROJECT
FAIRCHANCE BOROUGH, FAYETTE COUNTY, PA

DRAWN BY: GDC	CHECKED BY: EMB	APPROVED BY: EMB	EXHIBIT: A
DATE: FEBRUARY 27, 2025	DWG SCALE: 1"=30'	SHEET NO: 01 OF 02	

SEE PROFILE SHEET 2 OF 2