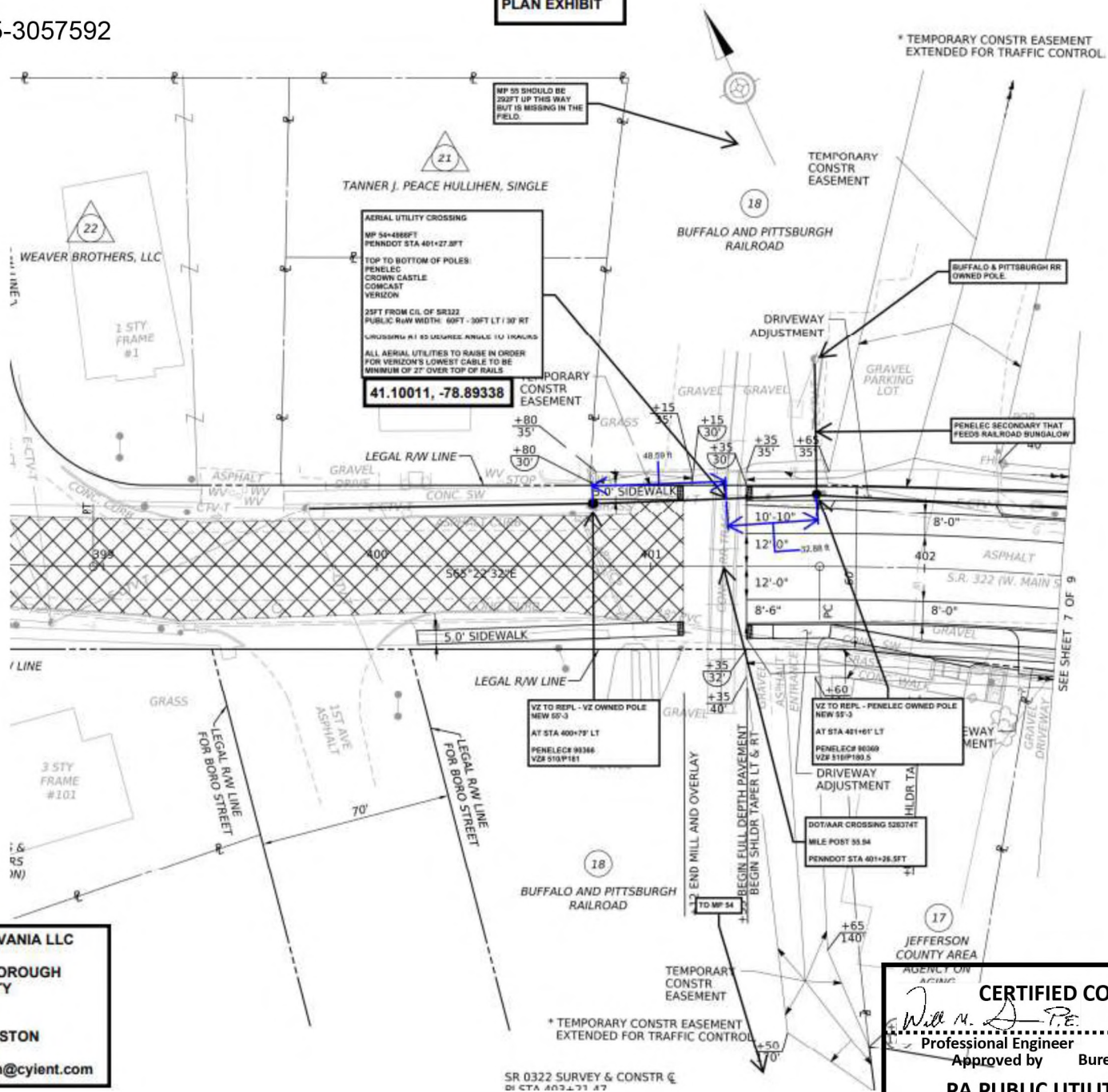


A-2025-3057592

PLAN EXHIBIT



VERIZON PENNSYLVANIA LLC  
 RYVL-1A7LW2U  
 REYNOLDSVILLE BOROUGH  
 JEFFERSON COUNTY  
 PENNSYLVANIA

ENG: ROBERT PRESTON  
 304-670-9999  
 robert.preston@cyient.com

**CERTIFIED CORRECT PLANS**

*Will M. D.P.E.*  
 Professional Engineer

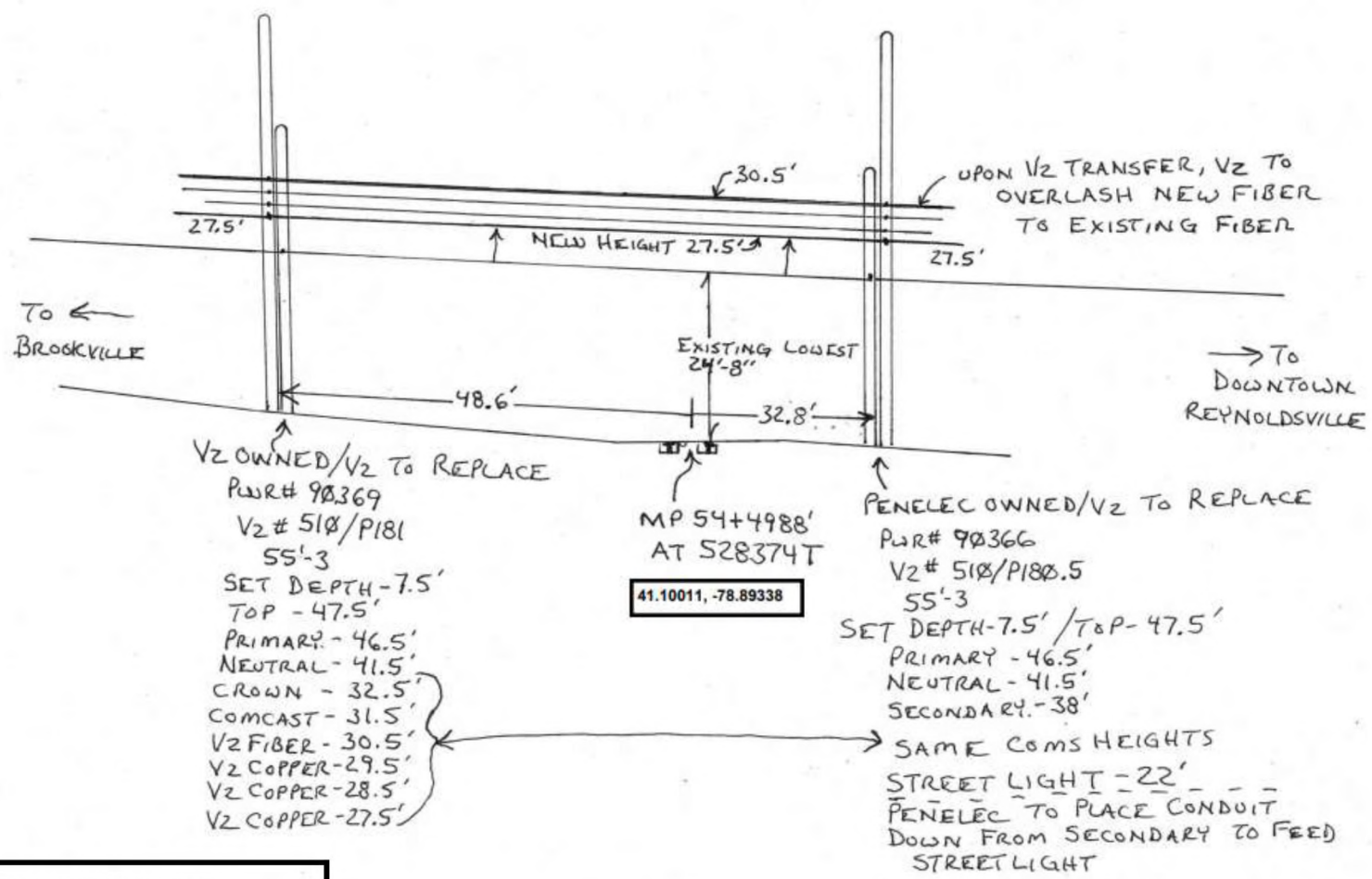
Approved by Bureau of Technical Utility Services

**PA PUBLIC UTILITY COMMISSION**

ATTEST  
*M. Matthew L. Hunsicker*  
 Secretary

PROFILE EXHIBIT  
 LOOKING NORTH  
 NOT TO SCALE

R4YL-1A7LW2U  
 REYNOLDSVILLE  
 JEFFERSON CO.  
 PENNSYLVANIA



V2 OWNED/V2 TO REPLACE  
 PUR# 90369  
 V2 # 510/P181  
 55'-3"  
 SET DEPTH-7.5'  
 TOP - 47.5'  
 PRIMARY - 46.5'  
 NEUTRAL - 41.5'  
 CROWN - 32.5'  
 COMCAST - 31.5'  
 V2 FIBER - 30.5'  
 V2 COPPER - 29.5'  
 V2 COPPER - 28.5'  
 V2 COPPER - 27.5'

MP 54+4988'  
 AT 528374T  
 41.10011, -78.89338

PENELEC OWNED/V2 TO REPLACE  
 PUR# 90366  
 V2 # 510/P180.5  
 55'-3"  
 SET DEPTH-7.5' / TOP - 47.5'  
 PRIMARY - 46.5'  
 NEUTRAL - 41.5'  
 SECONDARY - 38'  
 SAME COMS HEIGHTS  
 STREET LIGHT - 22'  
 PENELEC TO PLACE CONDUIT  
 DOWN FROM SECONDARY TO FEED  
 STREET LIGHT

**CERTIFIED CORRECT PLANS**  
*Will M. A. P.E.*  
 Professional Engineer  
 Approved by Bureau of Technical Utility Services  
**PA PUBLIC UTILITY COMMISSION**  
 ATTEST *Matthew L. Hender*  
 Secretary