
Garrett P. Lent

glent@postschell.com
717-612-6032 Direct
717-731-1985 Direct Fax

March 6, 2026

VIA ELECTRONIC FILING

Matthew L. Homsher, Secretary
Pennsylvania Public Utility Commission
400 North Street, Second Floor
Harrisburg, PA 17120

Re: Letter of Notification of Mid-Atlantic Interstate Transmission, LLC for Approval of the Peach Bottom-Three Mile Island 500 Kilovolt Transmission Line Loop to a Point of Interconnection with PPL Electric Utilities Corporation Project in Chanceford Township, York County, Pennsylvania Docket No. _____

Dear Secretary Homsher:

Enclosed for filing on behalf of Mid-Atlantic Interstate Transmission, LLC (“MAIT”) is a Letter of Notification (“LON”) requesting approval for the Peach Bottom-Three Mile Island 500 Kilovolt (“kV”) Transmission Line Loop to a Point of Interconnection with PPL Electric Utilities Corporation Project (“Project”). This LON is filed pursuant to the Pennsylvania Public Utility Commission’s (“Commission”) regulations at 52 Pa. Code § 57.72(d). Copies of this LON have been served upon the parties as required by 52 Pa. Code § 57.74 and as noted on the attached Certificate of Service.

Subject to the Commission’s approval, the Project has a scheduled construction date of June 1, 2026, to meet an in-service date of June 1, 2027. To support this construction timeline, MAIT respectfully requests Commission’s review and approval of the LON on or before the May 21, 2026 Public Meeting in order to allow construction to commence immediately thereafter.

If you have any questions pertaining to this matter, please do not hesitate to contact me.

Matthew L. Homsher, Secretary
March 6, 2026
Page 2

Respectfully submitted,

A handwritten signature in cursive script, appearing to read "Garrett P. Lent".

Garrett P. Lent

GPL/tjc
Attachment

CC: Deb Backer – Bureau of Technical Utility Services (via email; w/attachment)
Jordan Van Order – Bureau of Technical Utility Services (via email; w/attachment)
Certificate of Service

CERTIFICATE OF SERVICE

I hereby certify that a true and correct copy of the foregoing Letter of Notification has been served upon the following persons, in the manner indicated, in accordance with the requirements of 52 Pa. Code § 57.72(d)(3).

VIA CERTIFIED MAIL: RETURN RECEIPT REQUESTED

Office of Small Business Advocate
555 Walnut Street
1st Floor Forum Place
Harrisburg, PA 17101

PA Department of Environmental Protection
ATTN: Bureau of Waterways Engineering
and Wetlands
400 Market Street
Harrisburg, PA 17101

Office of Consumer Advocate
555 Walnut Street
5th Floor Forum Place
Harrisburg, PA 17101-1923

PA Department of Environmental Protection
ATTN: Office of Chief Counsel
400 Market St., 9th Floor
Harrisburg, PA 17105
CC: Secretary to PADEP Chief Counsel

Pennsylvania Public Utility Commission
Bureau of Investigation and
Enforcement
P.O. Box 3265
Harrisburg, PA 17105-3265

Pennsylvania Department of
Environmental Protection
Southcentral Regional Office
909 Elmerton Avenue
Harrisburg, PA 17110

Ms. Andrea Lowery, Executive Director
Pennsylvania Historical & Museum
Commission
300 North Street
Harrisburg, PA 17120-0024

Pennsylvania Fish and Boat Commission
Division of Environmental Services
595 E. Rolling Rodge Drive
Bellefonte, PA 16823

Office of Chief Counsel, Real Property
Division
Pennsylvania Department of
Transportation
Commonwealth Keystone Building
400 North Street, 9th Floor
Harrisburg, PA 17120

Pennsylvania Game Commission
Bureau of Wildlife Management
Division of Environmental Review
2001 Elmerton Ave.
Harrisburg, PA 17110-9797

Pennsylvania Department of
Conservation and Natural Resources
P.O. Box 8552
Harrisburg, PA 17015

US Fish and Wildlife Service
Pennsylvania Field Office
110 Radnor Road, Suite 101
State College, PA 16801-4850

Historic Preservation Bureau
400 North St, Ste 2,
Harrisburg, PA 17120

PPL Electric Utilities Corporation
827 Hausman Road
Allentown, Pennsylvania 18104

Grant Anderson
Engineer, Chanceford Township
GHI Engineers and Surveyors
213 Carlisle Street
Hanover, PA 17331

Bradley Smith
Vice Chair, Chanceford Township
Board of Supervisors
33 Muddy Creek Forks Road
Brogue, PA 17309

Kent Heffner
Chair, Chanceford Township
Board of Supervisors
33 Muddy Creek Forks Road
Brogue, PA 17309

John Shanbarger
Chair, Chanceford Township
Planning Commission
33 Muddy Creek Forks Road
Brogue, PA 17309

Travis Sherman
Chair, York County
York County Conservation District
2401 Pleasant Valley Road
York, PA 17402

Eric Bacon
Member, Chanceford Township
Board of Supervisors
33 Muddy Creek Forks Road
Brogue, PA 17309

John Klinedinst
Engineer, York County
28 East Market Street
York, PA 17401

Bruce Miller
Southeastern Region, York County
Planning Commission Board
28 East Market Street
York, PA 17401

Commissioner Doug Hoke
Member, York County
Board of Commissioners
28 East Market Street
York, PA 17401

Commissioner Scott Burford
Vice Chair, York County
Board of Commissioners
28 East Market Street
York, PA 17401

Commissioner Julie Wheeler
Chair, York County
Board of Commissioners
28 East Market Street
York, PA 17401

Glen A. & Susan E. Daugherty
4087 Leiphart Road
Brogue PA 17309

Ralph E. & Robert L. Daugherty
12456 Game Club Road
Brogue PA 17309

Date: March 6, 2026



Garrett P. Lent

**BEFORE THE
PENNSYLVANIA PUBLIC UTILITY COMMISSION**

LETTER OF NOTIFICATION OF :
MID-ATLANTIC INTERSTATE :
TRANSMISSION, LLC FOR :
APPROVAL OF THE PEACH :
BOTTOM-THREE MILE ISLAND 500 : **Docket No.** _____
KILOVOLT TRANSMISSION LINE :
LOOP TO A POINT OF :
INTERCONNECTION WITH PPL :
ELECTRIC UTILITIES :
CORPORATION PROJECT, IN :
CHANCEFORD TOWNSHIP, YORK :
COUNTY, PENNSYLVANIA :

LETTER OF NOTIFICATION

TO THE PENNSYLVANIA PUBLIC UTILITY COMMISSION:

Pursuant to 52 Pa. Code § 57.72(d)(1)(vi), Mid-Atlantic Interstate Transmission, LLC (“MAIT”) hereby files this Letter of Notification requesting that the Pennsylvania Public Utility Commission (“Commission”) approve the Peach Bottom-Three Mile Island 500 Kilovolt (“kV”) Transmission Line Loop to a Point of Interconnection (“POI”) with PPL Electric Utilities Corporation (“PPL Electric”) Project (“Project”) as described herein. Construction of the Project is anticipated to begin on or about June 1, 2026, and the Project is forecasted to be in service by June 1, 2027. This Project will be constructed in Chanceford Township, York County, Pennsylvania. To support this construction timeline, MAIT respectfully requests that the Commission issue its final ruling on or before the Public Meeting scheduled for May 21, 2026.

In this Project, MAIT proposes to extend a transmission line loop from the existing Peach Bottom-Three Mile Island 500 kV Transmission Line to a POI with PPL Electric. From the POI,

PPL Electric will then construct the remaining facilities to extend 500 kV service to the PPL Electric-owned Chanceford 500 kV Switchyard.¹

In support thereof, MAIT submits as follows:

I. INTRODUCTION

1. MAIT is a public utility subject to the jurisdiction of the Commission over the siting and construction of transmission lines pursuant to Chapter 57, Subchapter G, of the Commission's regulations.

2. The address of MAIT's principal business office is:

Mid-Atlantic Interstate Transmission, LLC
341 White Pond Drive
Akron, OH 44320

3. The attorneys representing MAIT in this matter authorized to receive notices and communications on its behalf are:

Tori L. Giesler (ID #207742)
FirstEnergy Service Company
341 White Pond Dr.
Akron, OH 44320
(610) 921-6658
tgiesler@firstenergycorp.com

David B. MacGregor (ID #28804)
Garrett P. Lent (ID #321566)
Megan Rulli (ID # 331981)
Post & Schell, P.C.
17 North Second Street
12th Floor
Harrisburg, PA 17101-1601
(717) 731-1970
dmacgregor@postschell.com
glent@postschell.com
mrulli@postschell.com

¹ The PPL Electric facilities that will be interconnected with by MAIT are related to PPL Electric's "Chanceford 500 kV Rebuild Project," which was the subject of a full siting application that was approved by the Commission in the Order issued September 25, 2025, at Docket No. A-2024-3051167.

MAIT agrees to accept electronic service in this proceeding.

4. MAIT also requests that a copy of all notices and communications regarding this matter be sent to:

Colin Nahill
Transmission Siting Specialist
FirstEnergy Service Company
2800 Pottsville Pike
Reading, PA 19612
Email: cnahill@firstenergycorp.com

5. MAIT provides the following attached Exhibits in support of this Letter of Notification:

- **Exhibit 1:** A depiction of the general location of the Project on a topographic map;
- **Exhibit 2:** A depiction of the general layout of the Project;
- **Exhibit 3:** A copy of the PJM Interconnection, LLC (“PJM”) Transmission Expansion Advisory Committee (“TEAC”) meeting slides: proposal slide dated October 31, 2023 and solution slide dated December 5, 2023;
- **Exhibit 4:** A depiction of a typical 500 kV single circuit tubular steel horizontal deadend three pole angles 0 to 50 degrees;
- **Exhibit 5:** A depiction of a 500 kV single circuit tubular steel vertical deadend single pole angles 50 to 90 degrees, structure #187A;
- **Exhibit 6:** A copy of the Jurisdictional Wetland Determination Report prepared by Woodland Design Associates, Inc. (“Woodland”), dated May 10, 2024;
- **Exhibit 7:** A copy of the Pennsylvania Natural Diversity Inventory (“PNDI”) receipt, dated April 11, 2024;

- **Exhibit 8:** A copy of the United States Fish and Wildlife Service (“USFWS”) Concurrence Letter, dated June 12, 2024;
- **Exhibit 9:** A copy of the Pennsylvania State Historic Preservation Office (“SHPO”) concurrence responses, dated December 31, 2024, and June 2, 2025; and
- **Exhibit 10:** A list of entities or landowners impacted or potentially impacted by this Project.

6. This Letter of Notification and accompanying Exhibits, which are incorporated herein by reference, contain all the information required by 52 Pa. Code § 57.72(d)(4).

II. THE PROJECT

A. NEED FOR THE PROJECT

7. The Project was developed to mitigate violations of FirstEnergy and PJM Planning Criteria, which were identified as a part of a series of PJM’s 2022 Regional Transmission Expansion Plan (“RTEP”) Open Window 3 analyses for model year 2027.

1. Existing System

8. The existing 0.5-mile (2,448 feet) section of the Peach Bottom-Three Mile Island 500 kV 5007 Transmission Line that is the subject of this Letter of Notification currently utilizes 2493 kcmil² 54/37 aluminum conductor aluminum-alloy reinforced (“ACAR”) conductor and two 19#9 Alumoweld 19-strands shield wire from structure #186 through structure #188.

9. The existing 0.5 mile of the Peach Bottom-Three Mile Island 500 kV 5007 Transmission Line that is the subject of this Letter of Notification is supported by three single

² Kcmil stands for 1,000 circular mils and is a unit of measurement for the cross-sectional area of electrical conductors.

circuit steel lattice tangent structures, existing structures #186, 187, and 188, which range in height from approximately 100 to 141 feet above ground, and this portion of the subject line is in a horizontal wire configuration.

10. The Project will involve the construction of a transmission line loop to interconnect with PPL Electric's 500 kV transmission line to provide the requested 500 kV service to the Chanceford 500 kV Switchyard. A topographic map showing the Project location is attached hereto as **Exhibit 1**. A map of the existing system configuration and proposed modifications to the existing system is provided as part of **Exhibit 2**.

2. Identification of Need

11. PJM, in its capacity as the regional Transmission Planner, Planning Authority, Transmission Operator, Balancing Authority, and Reliability Coordinator, identifies the need and timing for mandatory transmission system upgrades as part of the reliability planning, economic planning, and interconnection planning processes to preserve the reliability of the electric grid under its operational control as the Regional Transmission Organization. The PJM planning process is an 18-month cycle starting in September of every calendar year. The process ultimately produces a PJM Board approved RTEP 18 months later (February). The RTEP consists of transmission system upgrades produced from one, or more, of four processes: reliability planning, economic planning, interconnection planning, and local planning.

12. Baseline upgrades are identified as part of the reliability planning and economic planning analysis. The analysis consists of a comprehensive series of detailed studies that are designed to satisfy not only PJM's reliability planning criteria, but also those of the applicable transmission owners, including FirstEnergy's Transmission Planning Criteria, as well as the North American Electric Reliability Corporation and ReliabilityFirst Corporation reliability standards.

The transmission planning process and the baseline RTEP projects selected for construction under that process are required by the applicable reliability and planning criteria and once approved by PJM, become mandatory. Specifically, transmission owners are obligated to build these projects under Section 1.7 of Schedule 6 of the PJM Operating Agreement.³ These projects are identified with an upgrade identification number starting with the letter “b” followed by a four-digit number.

13. PJM identified significant reliability issues in the 2022 RTEP Open Window 3 study. The reliability of the transmission system is determined based on how the transmission system functions under various system conditions. Transmission system reliability is measured on its ability to function within the thermal loading, voltage and stability limits, and the ability of the system to correctly interrupt and isolate short circuits under different loading conditions—such as summer peak, winter peak and light load conditions—for the tested contingencies. Reliability criteria violations, such as exceeding thermal loading limits, voltage magnitude or deviation limits, or non-convergent contingencies (*i.e.*, contingencies in which the power flow analysis fails to reach a numerical solution indicating instability in the transmission system) in the 2027 summer, winter, and light load scenarios were identified in the 2022 RTEP Open Window 3 study. The violations are associated with significant load growth in the Dominion and Allegheny Power Systems (“APS”) transmission zones and generation deactivations within the PJM region.

14. The baseline reliability criteria violations included numerous overloaded 500 kV transmission lines, which are the backbone of the transmission system supporting the APS and Dominion zones in the District of Columbia, Maryland, and Virginia areas. The majority of the overloaded 500 kV facilities occurred during both summer and winter peak. Overloaded transmission lines, which are the result of more power flowing in a transmission circuit than the

³ Available at: <https://www.pjm.com/directory/merged-tariffs/oa.pdf>.

circuit is designed for, can lead to cascading outages and system collapse if not addressed. Numerous voltage collapse, extreme low-voltage magnitude, and voltage drop violations were also observed, indicating the inability of the transmission system to deliver energy to load centers. Not addressing these violations will make the power system inoperable under the identified conditions, leading to an increased risk of load loss, generation loss, and cascading transmission outages.

15. The proposed Project is related to PPL Electric's proposal 2022-W3-344 and PSEG's Maryland Piedmont Reliability Project proposal 2022-W3-637 to construct a new 500 kV transmission line from the Chanceford 500 kV Switchyard to Doubs Substation. The construction of the line loop was awarded to MAIT by PJM since the line loop location is within the MAIT-owned section of the Peach Bottom–Three Mile Island 500 kV 5007 Transmission Line. PJM's Reliability Analysis Report for 2022 RTEP Open Window 3⁴ details the need, the proposed mitigations, and the proposed alternatives to this Project.

16. The proposed Project was first presented on October 31, 2023, at the PJM TEAC meeting. During PJM's December 5, 2023, TEAC meeting, a baseline upgrade identification number, b3800.2, was assigned to the Project, with a projected in-service date of June 1, 2027. A copy of the TEAC meeting slides is provided in **Exhibit 3**.

17. The Project was part of a competitive open window, 2022 RTEP Open Window 3, therefore, a variety of alternatives were proposed by various entities. There were 72 proposals submitted by ten different entities. Information on the alternative proposals can be found in PJM's Reliability Analysis Report for 2022 RTEP Open Window 3.

18. Due to the nature of the Project, MAIT did not consider the use of any advanced technology for the line loop construction.

⁴ Available at: [20231205-2022-rtep-window-3-constructability--financial-analysis-report.pdf](https://www.pjm.com/marketing-and-sales/marketing-and-sales-reports/2023-12-05-2022-rtep-window-3-constructability--financial-analysis-report.pdf).

B. THE PROPOSED PROJECT

19. For this Project, PPL Electric has requested that MAIT loop an existing 500 kV transmission line to a POI with PPL Electric in order to provide electric service to PPL Electric's new Chanceford 500 kV Switchyard. To accommodate PPL Electric's needs, the existing Peach Bottom-Three Mile Island 500 kV 5007 Transmission Line will be looped into the new Chanceford 500 kV Switchyard. The Project will originate from existing Peach Bottom-Three Mile Island 500 kV 5007 Transmission Line between existing structure #186 and existing structure #188.

20. Four new structures will be installed within the existing 200-foot-wide right-of-way ("ROW"). The four new structures will be approximately 120 to 195 feet in height above grade with span lengths ranging from approximately 310 to 1,000 feet. Two of the new structures are proposed as single circuit tubular steel horizontal deadend three pole structures on drilled pier foundations: structure #186.5 (approximately 180 feet in height above grade) and structure #187.5 (approximately 120 feet in height above grade), as depicted in **Exhibit 4**. The remaining two new structures are proposed as single circuit tubular steel vertical deadend single pole structures on drilled pier foundations: structure #187A (approximately 195 feet in height above grade) and structure #187B (approximately 155 feet in height above grade), as depicted in **Exhibit 5**.

21. To facilitate the new transmission line loop, approximately 750 feet of existing conductor and shield wire will be removed along with existing structure #187. Approximately 360 feet of new conductor and shield wire will be installed from new structure #186.5 to new structure #187A. Approximately 310 feet of new conductor and shield wire will be installed from new structure #187.5 to new structure #187B. Approximately 550 feet of new conductor and shield wire will be installed from new structure #187A to new PPL Electric POI structure #1A. Approximately 550 feet of new conductor and shield wire will be installed from new structure

#187B to new PPL Electric POI structure #1B. The total length of new conductor and shield wire is approximately 1,770 feet. Approximately 1,000 feet of existing conductor and shield wire will be transferred from existing structure #186 to new structure #186.5. Approximately 700 feet of existing conductor and shield wire will be transferred from existing structure #188 to new structure #187.5. The total length of existing conductor and shield wire being transferred is approximately 1,700 feet.

22. The new conductor and shield wire shall match the existing conductor and shield wire. The Project will install new 2493 kcmil 54/37 ACAR conductor and new 19#9 Alumoweld 19-strands shield wire from structure #186.5 to PPL Electric POI structure #1A and from structure #187.5 to PPL Electric POI structure #1B. No overhead fiber will be installed as part of this Project.

23. The estimated total cost of the proposed Project is approximately \$7,424,000.⁵ A breakdown of Project costs is as follows:

Estimated Total Costs:

Transmission Line Engineering	\$524,000
Transmission Line Materials.....	\$2,176,000
Transmission Line Construction.....	\$3,398,000
Substation.....	\$1,326,000 ⁶
 Total	 \$7,424,000

The cost of the Project will be paid for by MAIT. All transmission lines will be owned, operated, and maintained by MAIT.

⁵ All costs are network costs.

⁶ The substation costs consist of approximately \$151,000 for engineering, \$266,000 for materials, and \$909,000 for construction.

III. HEALTH AND SAFETY

24. The proposed Project will not create any unreasonable risk of danger to public health or safety. The Project will be designed to meet or exceed all requirements of the latest revision of the National Electrical Safety Code (“NESC”) under all operating conditions as well as FirstEnergy’s current design criteria.

25. FirstEnergy’s design criteria require that 500 kV transmission lines have a designed vertical conductor-to-ground clearance of 36 feet. This design value exceeds the NESC minimum of 28.9 feet by a margin of 7.1 feet. In general, FirstEnergy’s clearance criteria exceed the NESC minimums by various margins ranging from 4 feet to 7 feet, depending on the voltage and specific clearance measurement. The transmission line’s maximum operating temperature will be 200 degrees Fahrenheit.

26. The design, construction, and operation of the Project will meet or exceed all applicable safety standards established by the Occupational Safety and Health Administration (“OSHA”). Moreover, the Project will be constructed in accordance with the Company’s standard construction practices to perform all work safely. All work will be performed in keeping with NESC, OSHA, and all other applicable state and federal requirements.

IV. DESCRIPTION OF THE RIGHT-OF-WAY

27. The new MAIT structures will be constructed along centerline within the existing 200-foot-wide ROW. The existing MAIT transmission centerline is located approximately 100 feet from the northeastern edge of the 200-foot-wide ROW. The Project line loop is approximately 550 feet in length from new structures #187A and #187B to new PPL Electric POI structures #1A and #1B. Of the approximately 550-foot-long line loop, approximately 100 feet of the line loop

will traverse the existing ROW from new structures #187A and #187B to the edge of the existing MAIT ROW. The remaining approximately 450 feet of the line loop will extend beyond the edge of the existing MAIT ROW into new PPL Electric ROW to PPL Electric POI structures #1A and #1B.

28. The existing easements allow for the proposed structure removals, installation of new steel structures and the new conductor and shield wire within the existing ROW. MAIT will coordinate with all affected landowners for temporary access to support construction as needed. The installation of the segment of the proposed line loop that extends beyond existing MAIT ROW is located within PPL Electric ROW. MAIT is presently coordinating an agreement with PPL Electric for the extension of the loop line into its ROW.

V. LAND USE AND ENVIRONMENTAL EVALUATION

29. As explained above, construction of the proposed Project will take place within existing MAIT ROW and PPL Electric ROW. Therefore, it is anticipated that the proposed Project will have minimal incremental impacts on land use in the area.

30. A Jurisdictional Wetland Determination Report prepared by Woodland, dated May 10, 2024, is enclosed as **Exhibit 6**. Field reviews identified no wetlands or streams within the Project area; therefore, there are no anticipated impacts to either wetlands or streams as part of the Project.

31. A PNDI dated April 11, 2024, was conducted for the proposed Project area, and is enclosed as **Exhibit 7**. The Pennsylvania Game Commission, the Pennsylvania Department of Conservation and Natural Resources, and the Pennsylvania Fish and Boat Commission indicated no known impacts associated with the proposed Project. As such, no further coordination is

required with those agencies. The USFWS search indicated a potential impact to bog turtle habitat and required a habitat survey. Ambrook Consulting, LLC surveyed potential bog turtle habitat on May 16, May 22, May 28, and June 1, 2024. No bog turtles were detected on any of the survey dates. A copy of the USFWS concurrence letter, dated June 12, 2024, is enclosed as **Exhibit 8**.

32. The SHPO determined the Project would have no effect on either above ground or below ground resources within the Project area. Copies of the SHPO concurrence letters are included as **Exhibit 9**.

33. No tree clearing is anticipated for the Project. MAIT will implement appropriate measures during construction, and through the subsequent operation of the Project, to avoid or minimize potential impacts to environmental resources. MAIT will obtain the relevant state and federal permits needed to construct the Project. An erosion and sediment control plan and a General National Pollutant Discharge Elimination System permit will be submitted to the York County Conservation District for approval. Best management practices for soil erosion and sediment control will be put in place prior to any earth disturbance.

VI. NOTICE

34. MAIT has provided information regarding the Project to representatives of Chanceford Township, York County Conservation District, and the York County Planning Commission. These entities have not objected to the proposed Project. Copies of the Letter of Notification will be served upon all state agencies, federal agencies, county agencies, municipalities, and landowners in accordance with 52 Pa. Code § 57.72(d)(3). A list of the entities or landowners impacted or potentially impacted by this Project is provided in **Exhibit 10**.

VII. LETTER OF NOTIFICATION

35. MAIT is proceeding by means of a Letter of Notification, instead of a full Application, pursuant to the Commission's regulations at 52 Pa. Code § 57.72(d)(1)(vi).

36. The proposed Project involves the removal of one transmission line structure and the installation of four transmission line structures and the removal and replacement of conductor and shield wires for a distance of approximately 0.34 miles within existing easements and within new and existing transmission line ROW. As such, the proposed Project qualifies for a Letter of Notification because it consists of an HV line with a proposed route of 2 miles or less. *See* 52 Pa. Code § 57.72(d)(1)(vi).

37. This Letter of Notification is filed on the date set forth below. As provided in 52 Pa. Code § 57.72(d)(5), the Commission will review and, by order, approve or disapprove this Letter of Notification. If the Commission approves this Letter of Notification, the proposed Project will be constructed as proposed herein without the formal application process set forth at 52 Pa. Code §§ 57.71, *et seq.*

WHEREFORE, Mid-Atlantic Interstate Transmission, LLC respectfully requests that the Commission review and approve the proposed Peach Bottom-Three Mile Island 500 kV 5007 Transmission Line Loop to Point of Interconnection with PPL Electric Utilities Corporation Project located in Chanceford Township, York County, Pennsylvania, which is describe above and in the Exhibits attached hereto, on or before the Public Meeting scheduled for May 21, 2026.



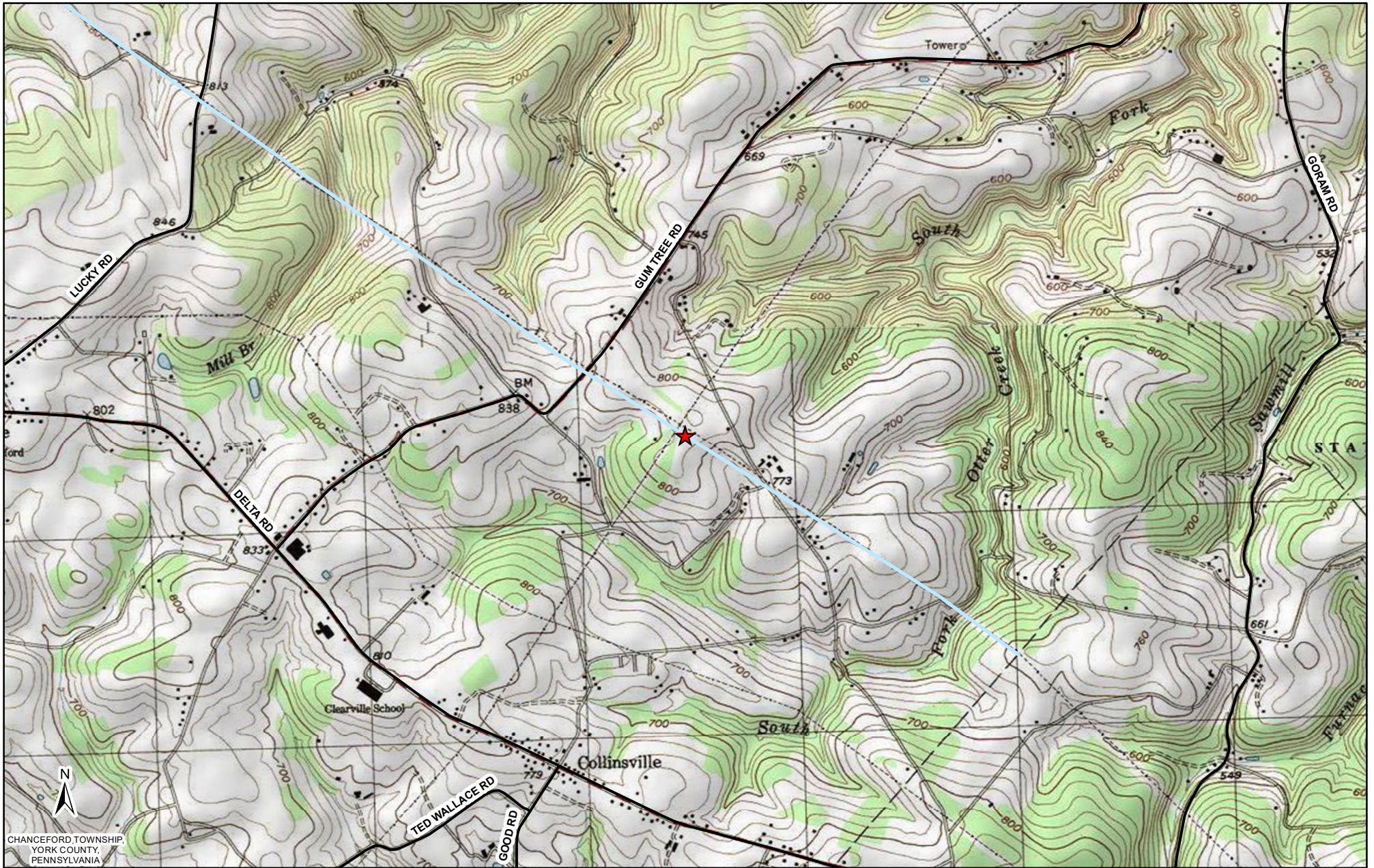
Tori L. Giesler (ID #207742)
FirstEnergy Service Company
341 White Pond Drive
Akron, OH 44320
Phone: (717) 490-3292
Email: tgiesler@firstenergycorp.com

David B. MacGregor (ID #28804)
Garrett P. Lent (ID #321566)
Megan E. Rulli (ID # 331981)
Post & Schell, P.C.
17 North Second Street
12th Floor
Harrisburg, PA 17101-1601
Phone: (717) 731-1970
Fax: (717) 731-1985
E-mail: dmacgregor@postschell.com
E-mail: glent@postschell.com
Email: mrulli@postschell.com

Date: March 6, 2026

Attorneys for Mid-Atlantic Interstate
Transmission, LLC

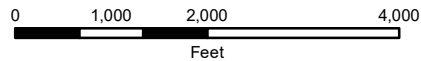
Exhibit 1



CHANCEFORD TOWNSHIP,
YORK COUNTY,
PENNSYLVANIA

LEGEND:

- ★ Project Location
- Transmission Line
- Roads



Reference:
USGS Topographical Overlay; PennDOT

Coordinate System:
NAD 1983 StatePlane Pennsylvania South FIPS 3702 Feet
Projection: Lambert Conformal Conic; Units: Foot US



EXHIBIT 1



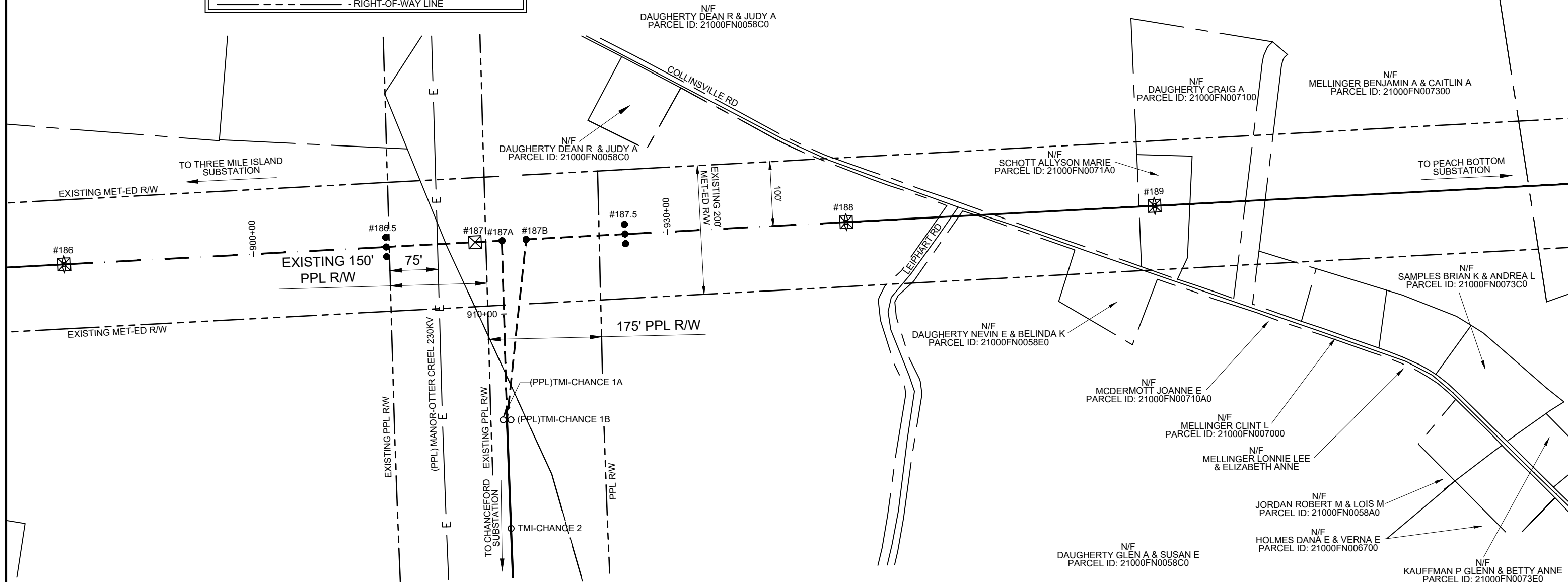
**Peach Bottom-Three Mile Island
500 Kilovolt Transmission Line Loop
To A Point Of Interconnection With
PPL Electric Utilities Corporation Project**

Exhibit 2



COMMONWEALTH OF PENNSYLVANIA
YORK COUNTY

LEGEND	
●	- NEW OR REPLACED STRUCTURE
○	- EXISTING STRUCTURE
⊠	- EXISTING TOWER TO REMAIN
⊠	- TOWER TO BE REMOVED
—	- OTHER LINES
—	- TRANSMISSION LINE (EXISTING)
---	- TRANSMISSION LINE (NEW)
---	- TRANSMISSION LINE (TRANSFER)
—	- ROAD
---	- PROPERTY LINE
---	- WATERWAY
---	- TOWNSHIP BOUNDARY LINE
---	- RIGHT-OF-WAY LINE



NOTE:

1. THE INFORMATION PROVIDED HEREIN IS FOR REFERENCE ONLY. EXISTING RIGHT-OF-WAY LINES SHOWN ARE APPROXIMATE AND DERIVED FROM UTILTY RECORD DRAWINGS AND EXISTING EASEMENT AGREEMENTS. THIS REPRESENTATION MAY NOT REFLECT CURRENT OR EXACT CONDITIONS AND SHOULD NOT BE RELIED UPON FOR CONSTRUCTION, LEGAL, OR PROPERTY DETERMINATIONS.

PRELIMINARY PRINT ONLY
NOT FOR CONSTRUCTION

MAIT <small>Mid-Atlantic Interconnect, LLC</small>	PEACH BOTTOM-THREE MILE ISLAND 500 KILVOLT TRANSMISSION LINE LOOP TO A POINT OF INTERCONNECTION WITH PPL ELECTRIC UTILITIES CORPORATION PROJECT
PEACH BOTTOM-THREE MILE ISLAND 500KV INTERCONNECT GENERAL LAYOUT	
EXHIBIT 2	

PAPER SIZE: 11X17

Exhibit 3

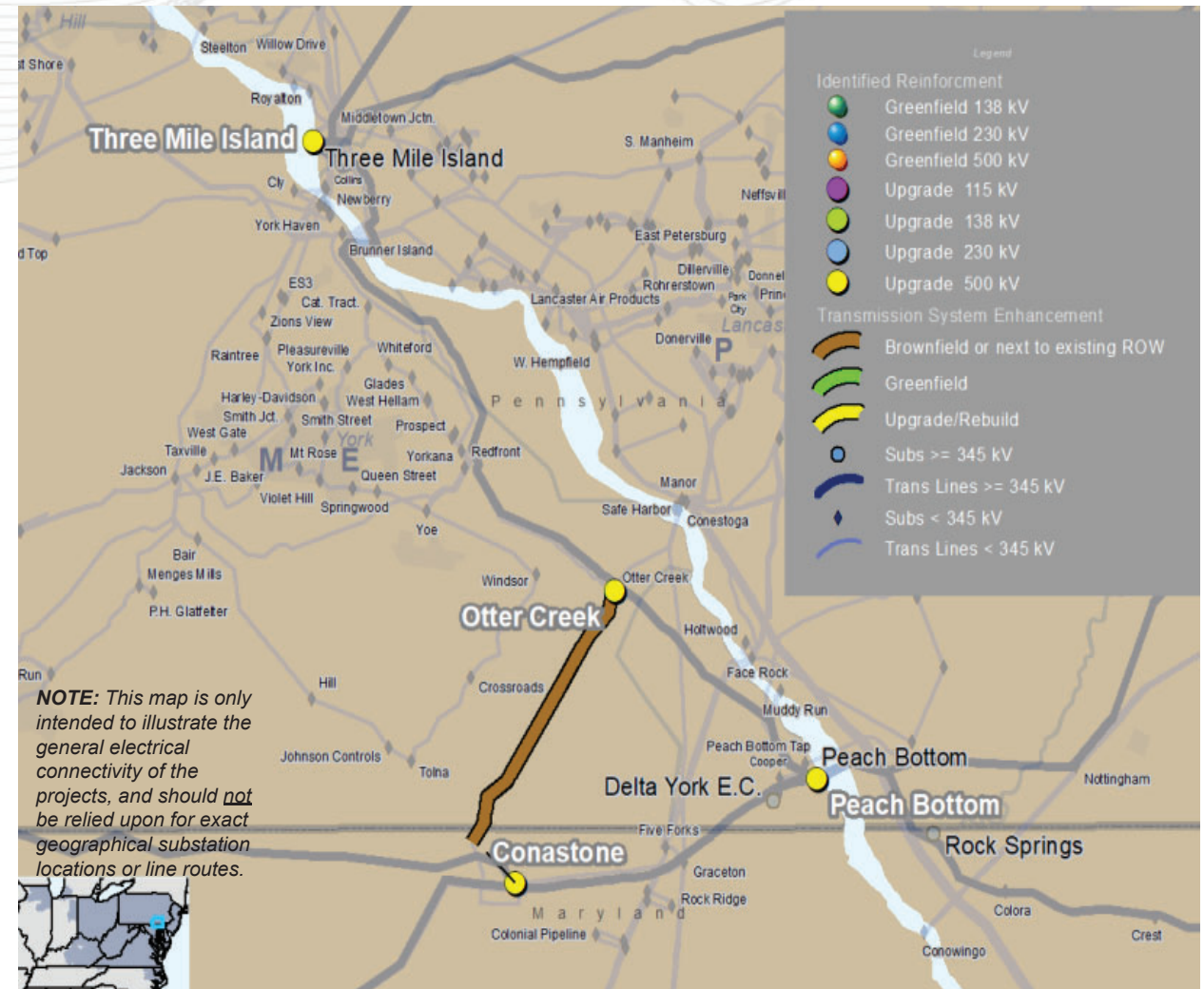
PPL:2022-W3-374

- Build New Otter Creek 500 kV switching station – cut into Peach Bottom – TMI 500 kV line
 - Two bay three breaker configuration
- Build New 500kV AC line from the new Otter Creek substation – towards Conastone station fence – Conastone demarcation point (~17 miles)
 - Rebuild the existing Otter Creek - Conastone 230 kV line to become a double-circuit 500 and 230 kV line. The existing line is owned by PPL and BGE will share responsibility.
 - New Rating - 4398SN/5237SE/4762WN/5609WE MVA
- Upgrade terminal equipment at Peach Bottom and TMI substations
 - 2644SN/3016SE/2917WN/3250WE MVA

Proposed Cost Estimate: \$145M

Required In-Service Date : 6/1/2027

Projected In-Service Date : 6/1/2027





Recommended Solutions to Address Clusters - East

PPL:2022-W3-374

Recommended Solution:

- Build New Otter Creek 500 kV switching station – cut into Peach Bottom – TMI 500 kV line
 - Two bay three breaker configuration
- Build New 500kV AC line from the new Otter Creek substation – towards Conastone station fence – Conastone demarcation point (~17 miles)
 - Rebuild the existing Otter Creek - Conastone 230 kV line to become a double-circuit 500 and 230 kV line. The existing line is owned by PPL and BGE, and both will share responsibility.
 - New Rating - 4398SN/5237SE/4762WN/5609WE MVA
- Upgrade relay/terminal equipment at Peach Bottom and TMI substations
 - New Rating - 2644SN/3016SE/2917WN/3250WE MVA

Baseline # B3800.1 –B3800.6

Proposed Cost Estimate: \$134.2 M

Required In-Service Date : 6/1/2027

Projected In-Service Date : 6/1/2027

NOTE: This map is only intended to illustrate the general electrical connectivity of the projects, and should not be relied upon for exact geographical substation locations or line routes.

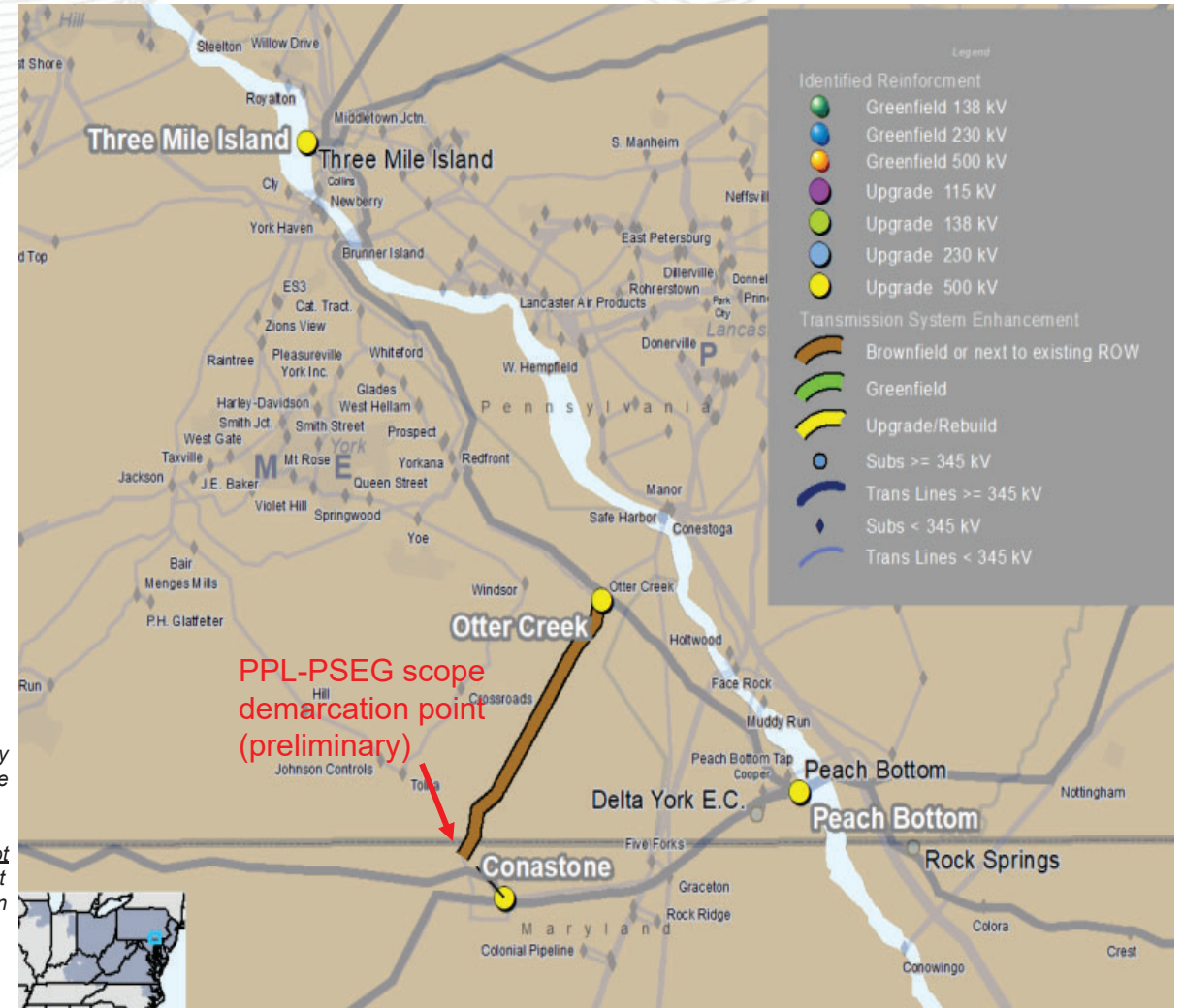
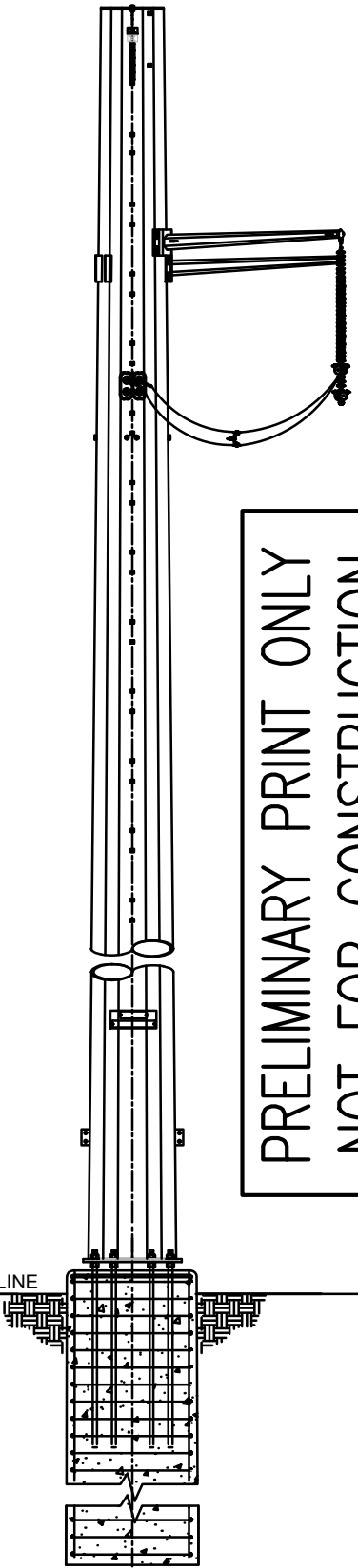
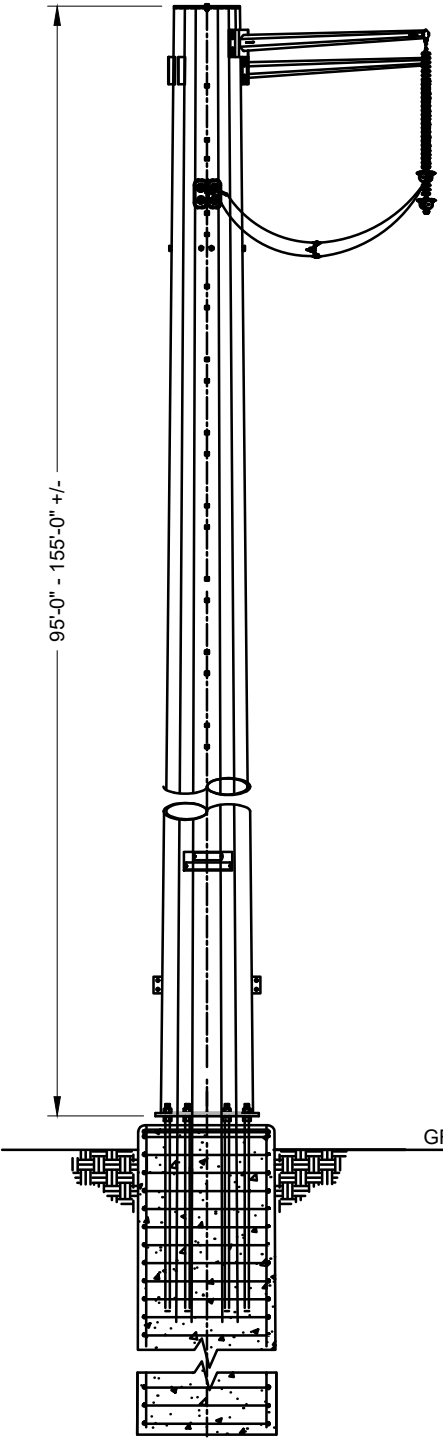
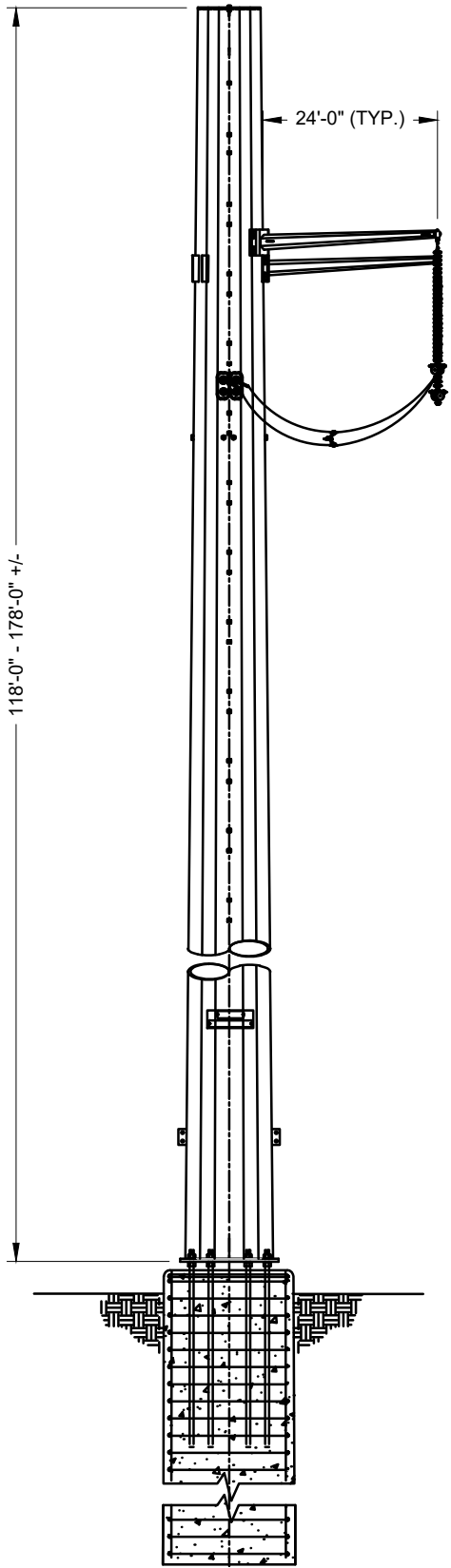


Exhibit 4



PRELIMINARY PRINT ONLY
NOT FOR CONSTRUCTION

GROUND LINE

PAPER SIZE: 8.5X11

SCALE: NTS



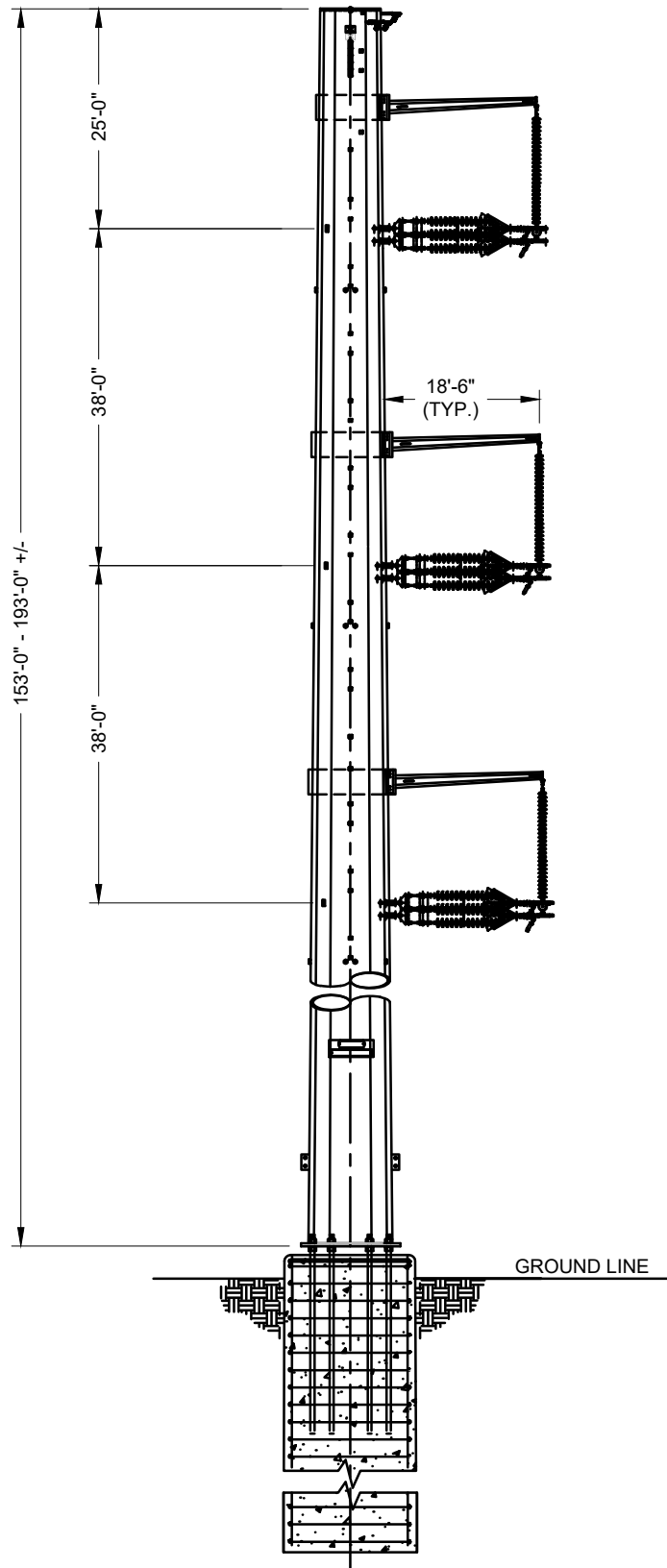
PEACH BOTTOM-THREE MILE ISLAND 500 KILVOLT TRANSMISSION
LINE LOOP TO A POINT OF INTERCONNECTION WITH
PPL ELECTRIC UTILITIES CORPORATION PROJECT

500KV SINGLE CIRCUIT TUBULAR STEEL STRUCTURE
HORIZONTAL DEADEND THREE POLE ANGLES 0° TO 50°

EXHIBIT 4

CE24-276-ME


Exhibit 5



PRELIMINARY PRINT ONLY
 NOT FOR CONSTRUCTION

PAPER SIZE: 8.5X11

SCALE: NTS

 <p style="font-size: 8px; margin: 0;">MAIT MAGNETIC DESIGN TRANSMISSION, LLC © 2008-2009</p>	<p style="font-size: 10px; margin: 0;">PEACH BOTTOM-THREE MILE ISLAND 500 KILVOLT TRANSMISSION LINE LOOP TO A POINT OF INTERCONNECTION WITH PPL ELECTRIC UTILITIES CORPORATION PROJECT</p>
<p style="font-size: 14px; margin: 0;">500KV SINGLE CIRCUIT TUBULAR STEEL STRUCTURE VERTICAL DEADEND SINGLE POLE ANGLES 50° TO 90°</p>	
<p style="font-size: 24px; margin: 0;">EXHIBIT 5</p>	

CE24-276-ME

Exhibit 6



Woodland Design Associates, Inc.
Landscape Architects □ Site Planners □ Wetlands Specialists

Jurisdictional Wetland Determination Report

*Prepared for:
PPL Electric Utilities Corporation
2 North Ninth Street GENN4
Allentown, PA 18101*

*Site address:
Chanceford 500k V-230k V Substation
York County, Pennsylvania*

*Date of Site Visit
May 8th, 2024*

*Date of Boundary Survey:
Concurrently with PPL EU Survey*

1. PURPOSE AND INTRODUCTION

Woodland Design Associates, Inc., was retained by PPL Electric Utilities Corporation to delineate wetlands at the proposed site, which is identified as the Chanceford 500kV-230kV Substation.

The purpose of this study was to map wetland areas based on the "U.S. ARMY CORPS OF ENGINEERS WETLAND DELINEATION MANUAL, TECHNICAL REPORT Y-87-1" which includes a regional supplement: EASTERN MOUNTAIN AND PIEDMONT REGION. This report represents the findings of this investigation. The method for the identification and delineation of wetlands on this project was the Routine On-Site Determination.

2. SITE LOCATION

The project is located in Chanceford Township, York County, Pennsylvania. The substation is located at 39.862408, -76.456362, north of S.R. 0074 (Delta Rd). A 1-mile greenfield runs generally northeast from the substation, ending southwest of Collinsville Rd. It turns to run northwest to connect to a tap point southeast of S.R. 2020 (Gum Tree Road). FIGURES 1 are the location maps showing the site. FIGURES 2 show the subdivision layout for this area.

The size of this project is approximately 80 acres and is defined as an existing parcel owned by PPL with a 1-mile green field and tap point.

3. PRELIMINARY INFORMATION SOURCES

TOPOGRAPHY

This project is located within the Airville, PA Quadrangle, which is shown in FIGURES 3. The site is between the 841- and 661-foot contour intervals and drains into South Fork Otter Creek.

SOILS

FIGURES 4 show the soil survey map (York County GIS Mapping) with the site marked. The soil survey indicated that six (6) soils would be found on the site. Below are the descriptions for these soils:

CeB- Chester silt loam, 3 to 8 percent slopes:

This soil is a gently sloping, very deep, well-drained soil on broad ridgetops. The surface layer is typically a dark brown, silt loam approximately 11 inches thick. The subsoil is about 29 inches thick. The upper 17 inches is a brown silt loam and the lower 12 inches is a brown silty clay loam. The permeability of this Chester soil is moderate and available water capacity is moderate to high. Runoff is medium.

Cm- Codorus silt loam, 0 to 3 percent slopes:

The Codorus silt loam soil series is nearly level, very deep, and moderately well-drained on flood plains. The surface layer is dark brown silt loam approximately 8 inches thick. The upper 12 inches of the subsoil is brown silt loam; yellowish-brown, mottled, silt loam to a depth of 20 inches, and brown/yellowish-brown, mottled silt loam to a depth of 48 inches. The permeability of this soil series is moderate and available water capacity is moderate or high.

GbB- Glenelg channery silt loam, 3 to 8 percent slopes:

This soil is gently sloping, deep, and well-drained found on ridgetops. Slopes are smooth and areas are irregular, long, and narrow in shape. The surface layer is a dark brown, channery silt loam about 8 inches thick. The subsoil is reddish-brown and yellowish-red channery silt loam. The permeability of

the Glenelg soil is moderate and available water capacity is moderate or high. Surface runoff is medium.

GbC- Glenelg channery silt loam, 8 to 15 percent slopes:

This soil is gently sloping, deep, and well-drained found on ridgetops. Slopes are smooth and areas are irregular, long, and narrow in shape. The surface layer is a dark brown, channery silt loam about 8 inches thick. The subsoil is reddish-brown, yellowish-red channery silt loam, and a channery silty clay loam to a depth of 25 inches. The permeability of the Glenelg soil is moderate and available water capacity is moderate or high. Surface runoff is high.

GbD- Glenelg channery silt loam, 15 to 25 percent slopes:

This soil is moderately steep, deep, and well-drained on ridges and hills. The surface layer is dark brown channery silt loam approximately 8 inches thick. The subsoil is reddish-brown channery silt loam to a depth of 12 inches and yellowish-red channery silt loam and channery silty clay loam to a depth of 25 inches. The permeability of this Glenelg series is moderate and the available water capacity is moderate or high.

GdA- Glenville silt loam 0 to 3 percent slopes:

The Glenville soil series is nearly level, very deep, moderately well-drained on broad lowlands, in depressions, and in drainage ways. Slopes are smooth and irregular or long and narrow in shape. The surface layer is dark brown, silt loam about 10 inches thick. The subsoil is about 30 inches thick. The upper 19 inches is yellowish-brown, mottled silt loam. The lower 11 inches is a yellowish-brown, mottled, firm, and brittle silt loam. The permeability of this soil is moderate above the fragipan, slow and moderately slow in the fragipan, and moderately slow in the substratum. Available water capacity is moderate and surface runoff is slow.

NATIONAL WETLAND INVENTORY MAP

The National Wetland Inventory Map (FIGURES 5) indicates that the project site is within:

PFO1A – palustrine/ forested/ broad-leaved deciduous/ temporary flooded

4. SITE INVESTIGATION

The site was visited on May 8th, 2024. The wetland delineators were Emily R. Wood, Registered Landscape Architect, and Nicole Billard, Environmental Planner. The weather was sunny and approximately 80 degrees. It had not rained on previous days in that area.

Several test pit borings were taken on site. The boring locations are shown on the attached plans (FIGURES 6). Vegetation, soils, and hydrology were observed and recorded on the following Field Data Sheets for these borings.

Photographs were also taken along the project and are located on FIGURES 7. The location and direction of the photographs are shown on the attached plan (FIGURES 6).

5. FINDINGS AND SUMMARY

Both wetlands and waters are present on site. There are three (3) wetlands/waters delineated. They are identified as wetlands/waters A through C.

The wetland/upland boundary was established along the edge of where the plants, soils, and hydrology change. The wetlands were flagged with pink “wetland boundary” flags numbered with the wetland

identification letter prefix and the flag number in sequence. During the fieldwork, the wetland and waters identification numbers were established starting at Wetland A, northeast S.R. 0074. The wetland and waters were located by a GPS unit and are illustrated in FIGURES 6.1 AND 6.2.

The U.S. Army Corp of Engineers has the final determination as to the jurisdiction of wetlands and waters of the U.S. The Corps can provide, if requested, a jurisdictional determination with regards to this property if you should so desire. A Jurisdictional Determination Request Form is available either through this firm or through the Corp District office.

The limit of professional liability for this project shall be limited to an amount equal to the fee paid for all work performed by Woodland Design Associates, Inc.

CERTIFICATION

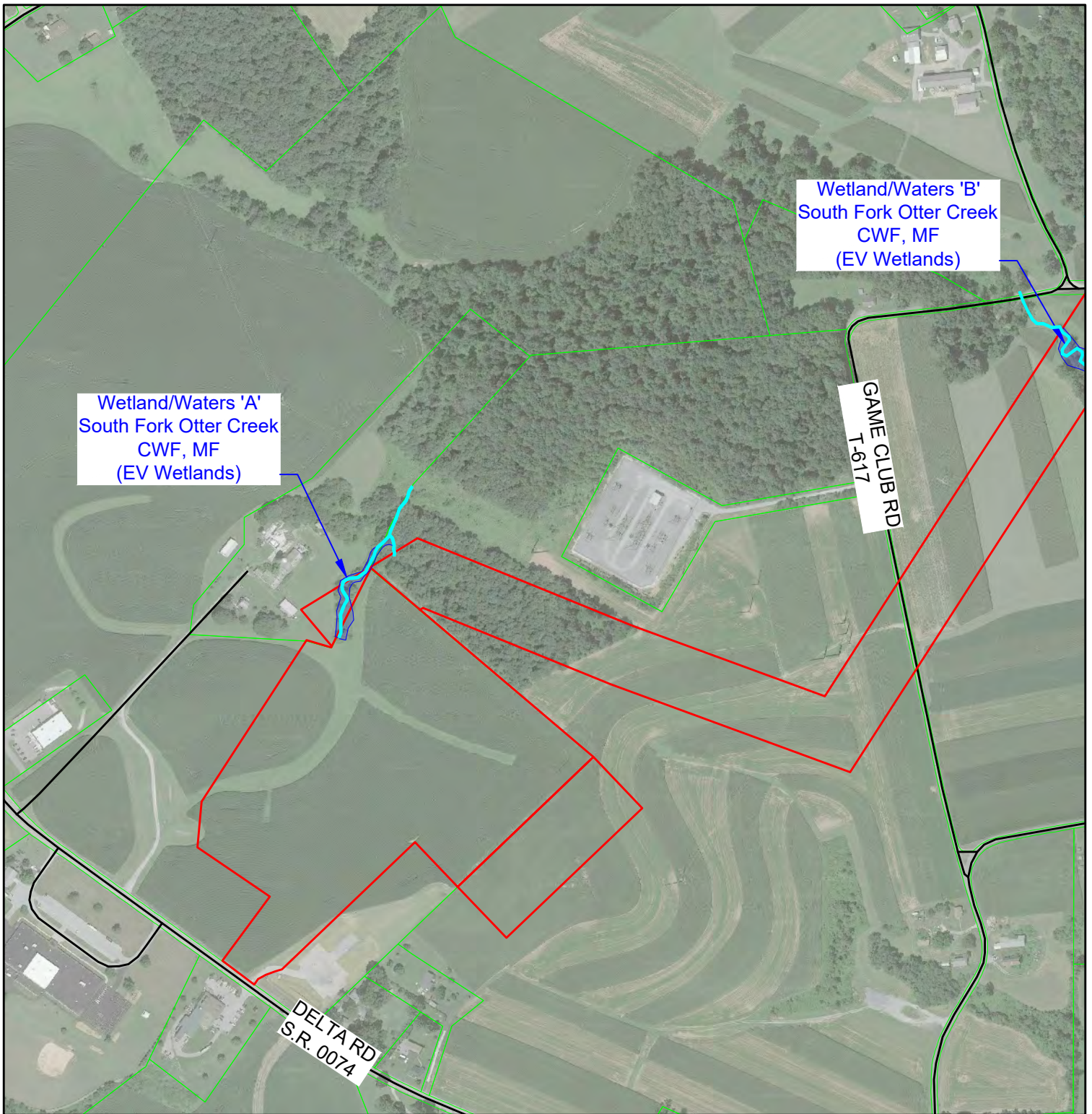
I certify that the above statements, and attachments, including those labeled and identified as FIGURES 1 through 7, and all conclusions are true, correct, and based upon current environmental principles and science, to the best of my knowledge and belief.

Emily R. Wood

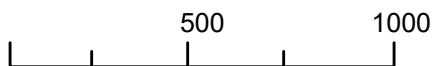
05/10/2024

Emily R. Wood
Registered Landscape Architect
PA. Reg. #LA003108

Date



GIS DATA FROM PASDA AND YORK COUNTY

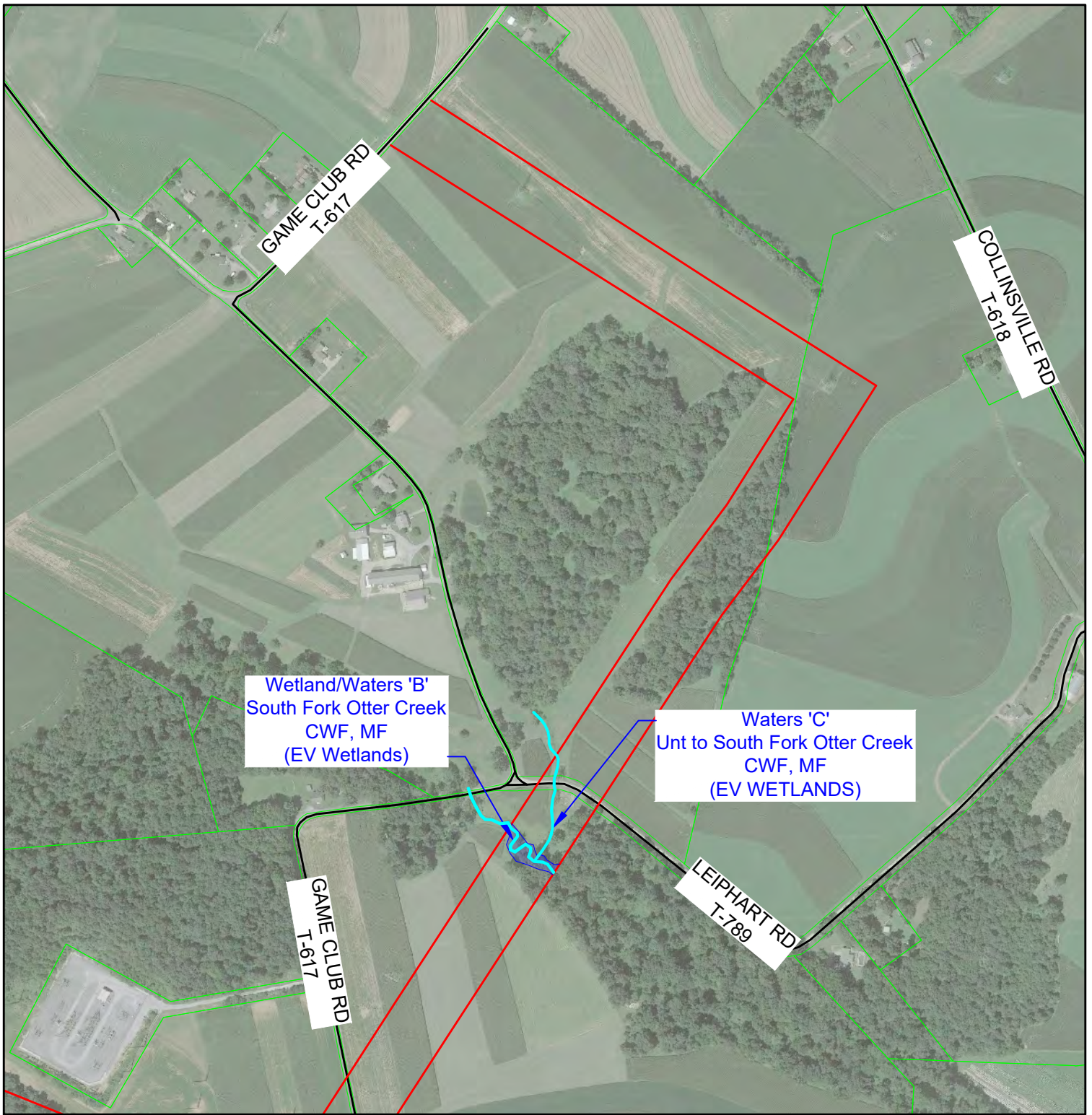


NORTH

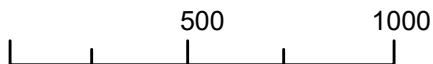
Legend

- Project Boundary
- Pa. State Roads
- Parcels
- Local Roads
- Streams
- Wetlands
- Municipal Boundaries

Wetland Delineation
 Figure 1.1: Location Map
 Chanceford 500kV-230kV Substation
 Chanceford Township
 York County
 Airville Quad



GIS DATA FROM PASDA AND YORK COUNTY



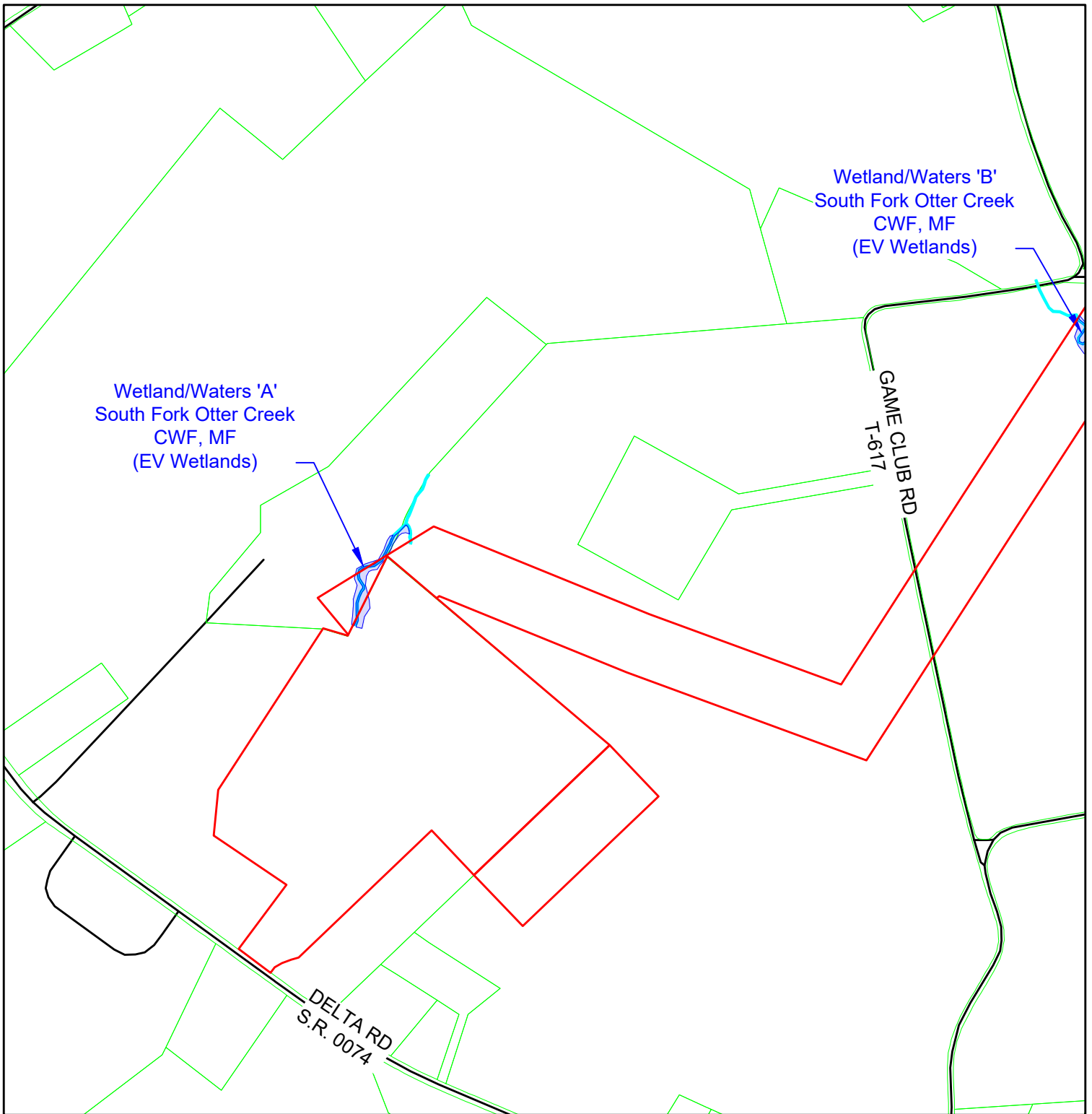
NORTH

Legend

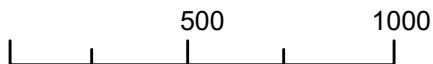
- Project Boundary
- Pa. State Roads
- Parcels
- Local Roads
- Streams
- Wetlands
- Municipal Boundaries

Wetland Delineation

Figure 1.2: Location Map
 Chanceford 500kV-230kV Substation
 Chanceford Township
 York County
 Airville Quad



GIS DATA FROM PASDA AND YORK COUNTY

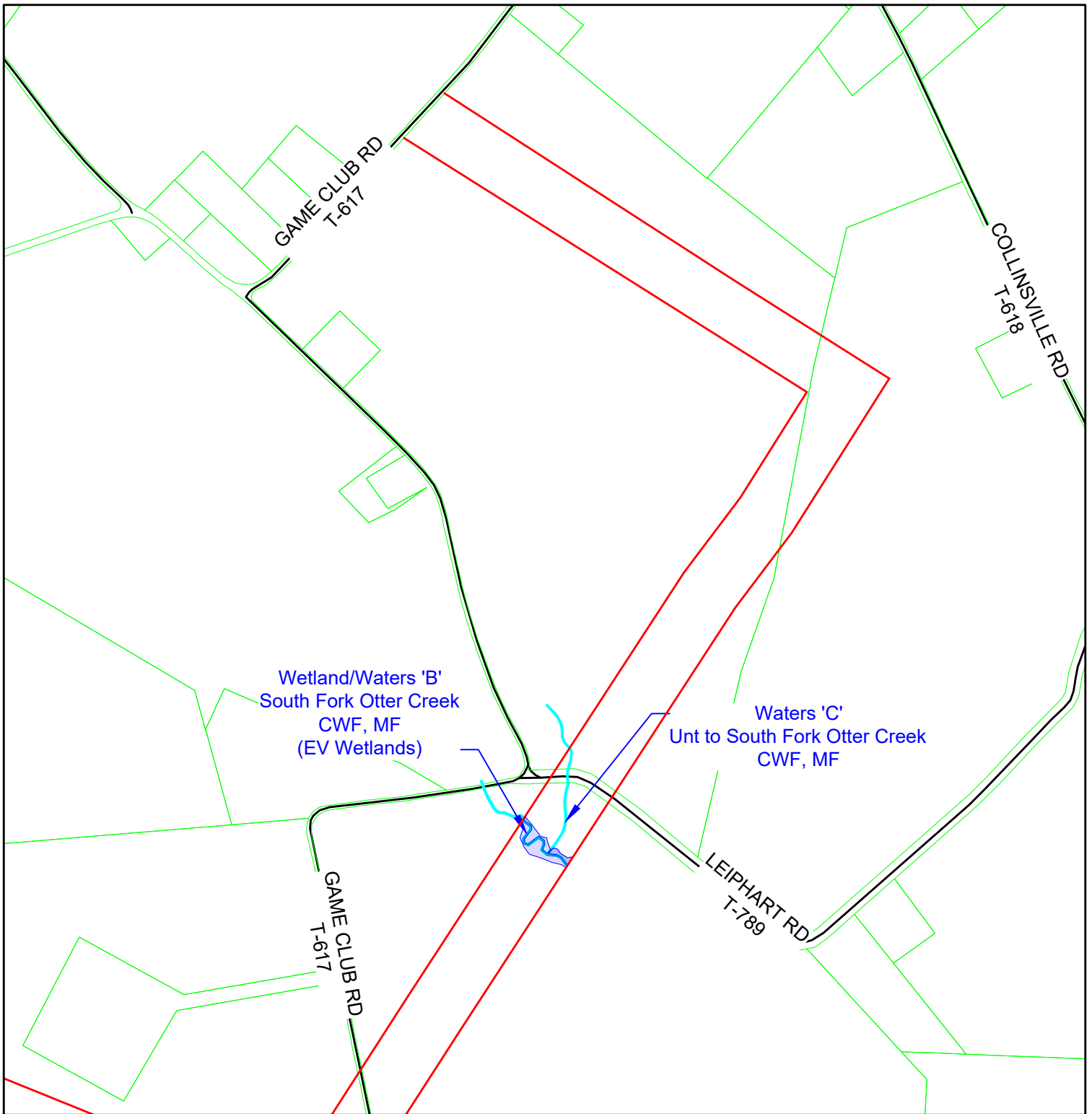


NORTH

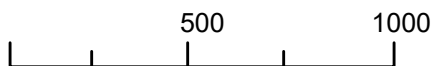
Legend

- Project Boundary
- Pa. State Roads
- Parcels
- Local Roads
- Streams
- Wetlands
- Municipal Boundaries

Wetland Delineation
 Figure 2.1: Subdivision Map
 Chanceford 500kV-230kV Substation
 Chanceford Township
 York County
 Airville Quad



GIS DATA FROM PASDA AND YORK COUNTY

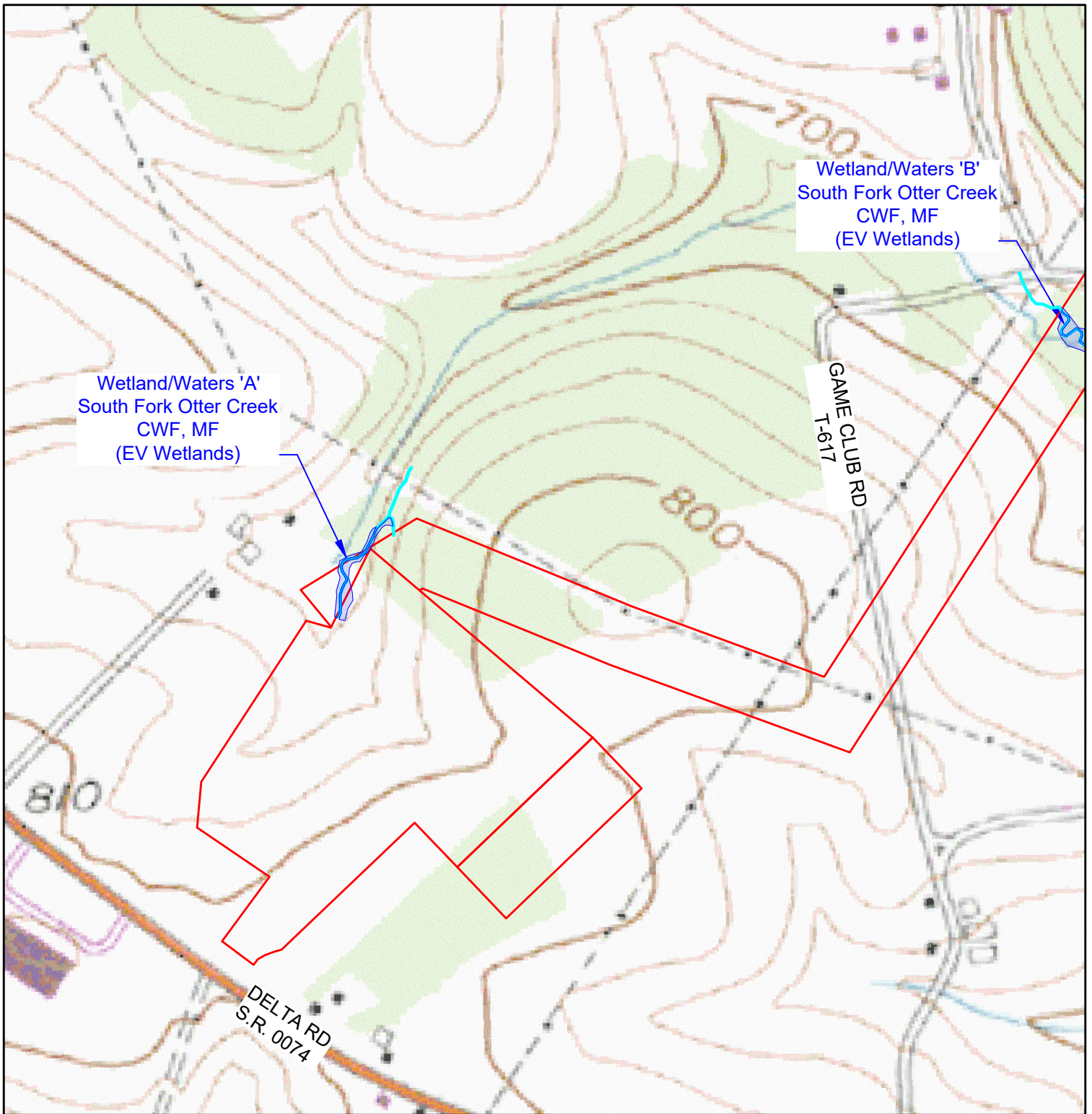


NORTH

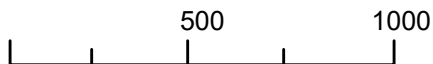
Legend

- Project Boundary
- Pa. State Roads
- Parcels
- Local Roads
- Streams
- Wetlands
- Municipal Boundaries

Wetland Delineation
 Figure 2.2: Subdivision Map
 Chanceford 500kV-230kV Substation
 Chanceford Township
 York County
 Airville Quad



GIS DATA FROM PASDA AND YORK COUNTY

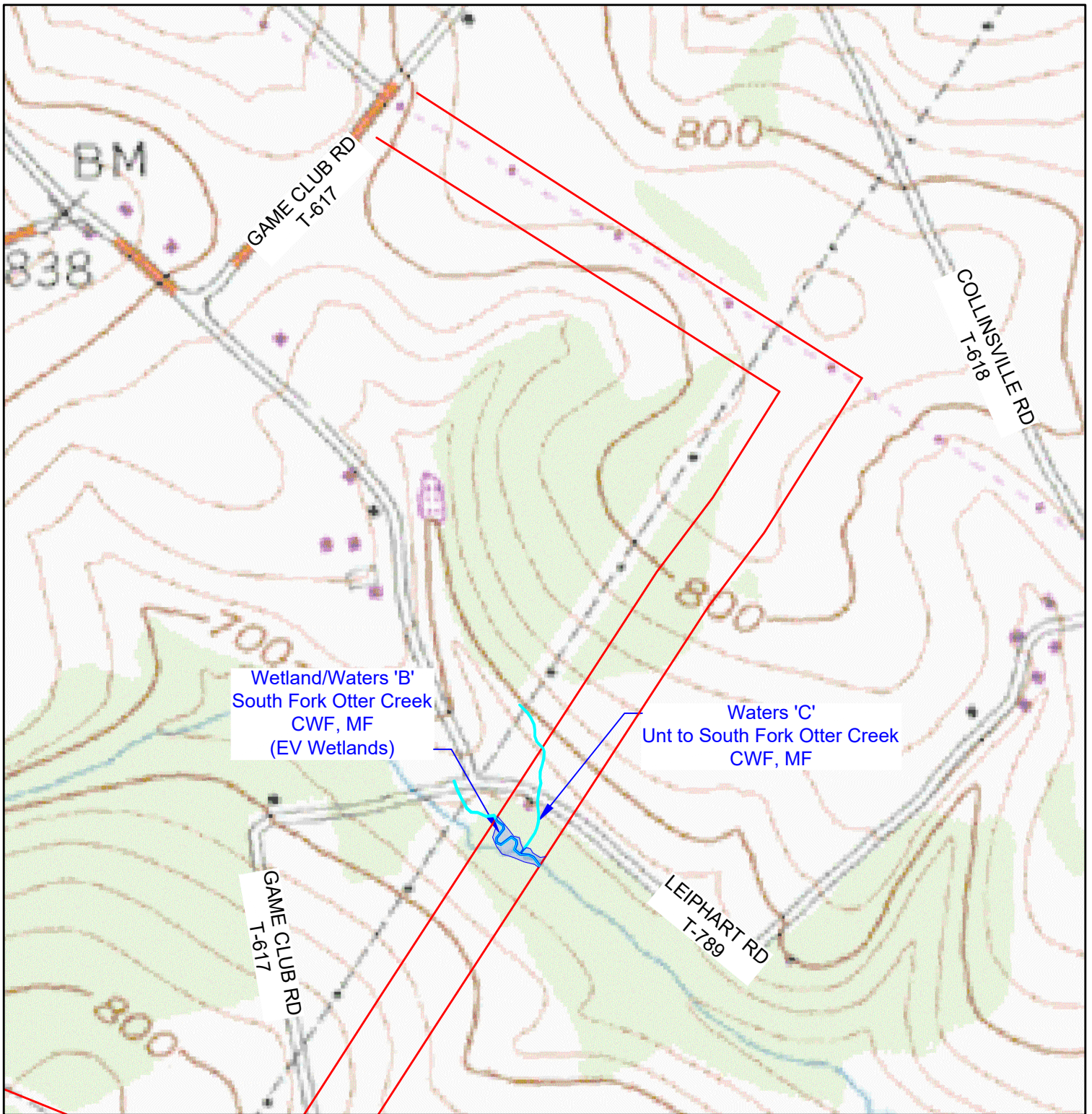


NORTH

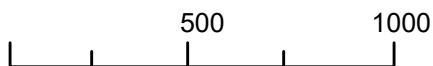
Legend

- Project Boundary
- · — · Streams
- Wetlands
- Municipal Boundaries

Wetland Delineation
 Figure 3.1: Topographic Map
 Chanceford 500kV-230kV Substation
 Chanceford Township
 York County
 Airville Quad



GIS DATA FROM PASDA AND YORK COUNTY



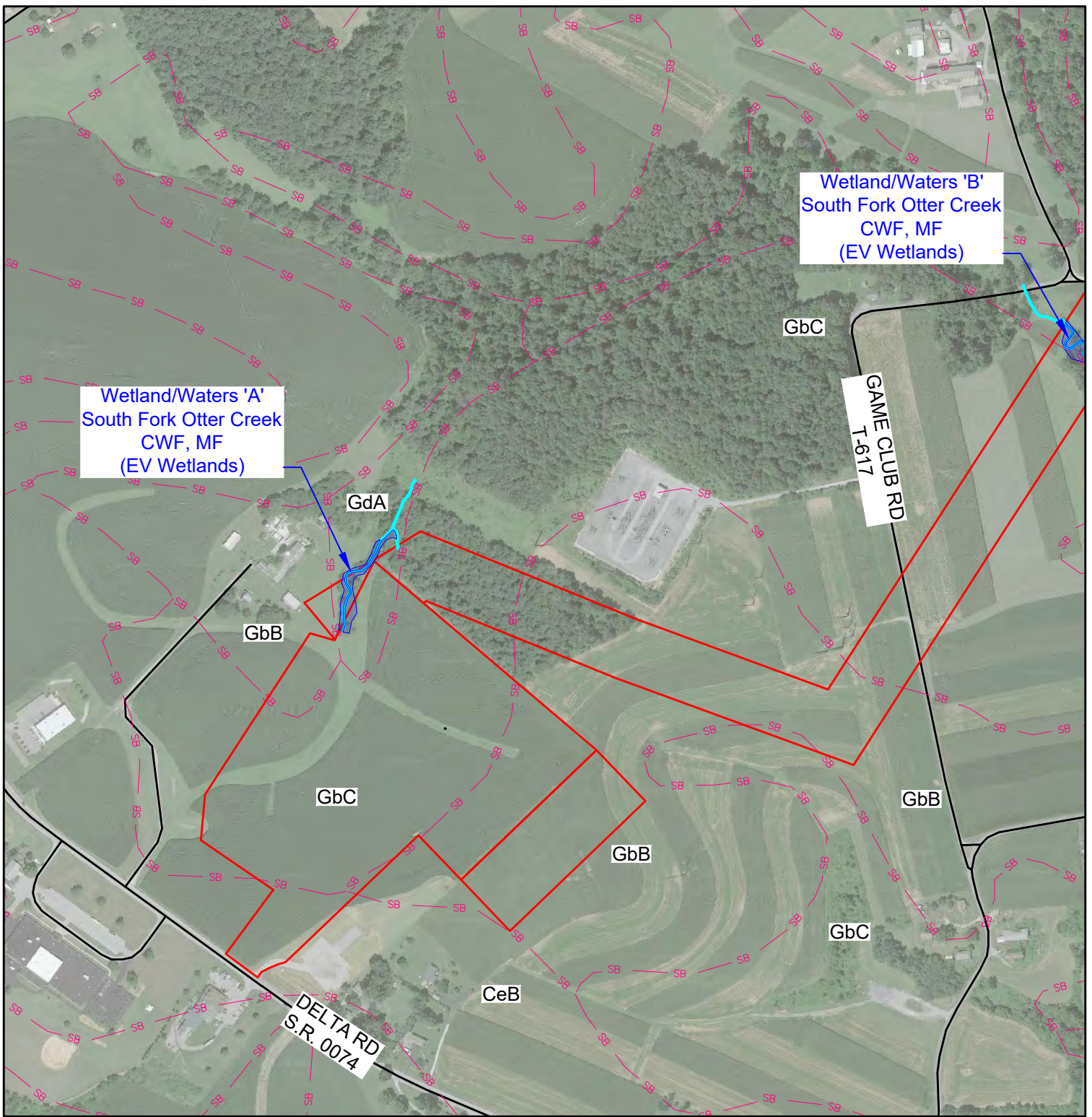
NORTH

Legend

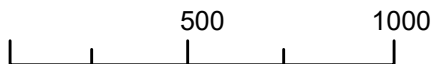
- Project Boundary
- Streams
- Wetlands
- Municipal Boundaries

Wetland Delineation

Figure 3.2: Topographic Map
 Chanceford 500kV-230kV Substation
 Chanceford Township
 York County
 Airville Quad



GIS DATA FROM PASDA AND YORK COUNTY

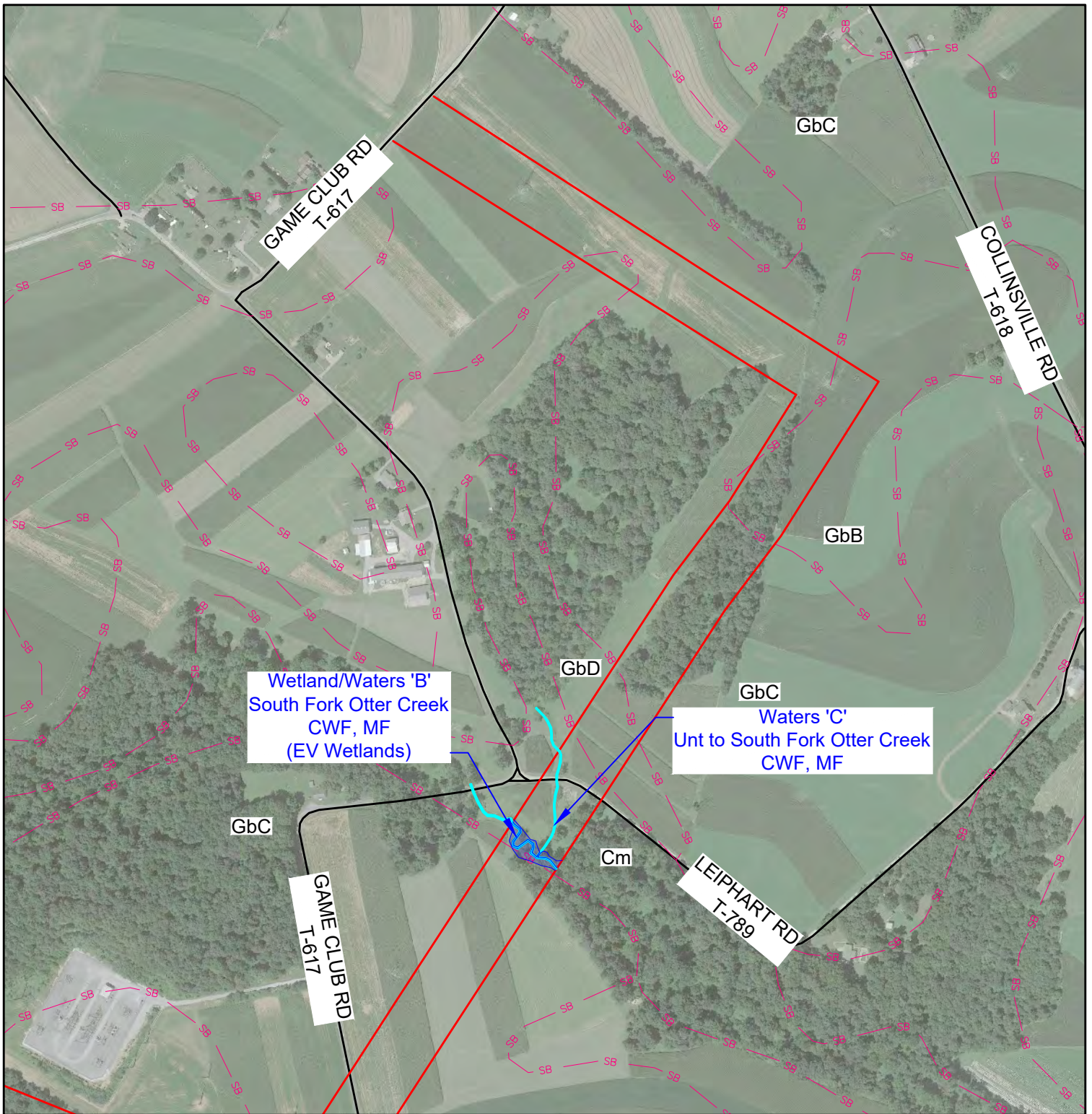


NORTH

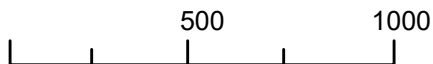
Legend

- Project Boundary
- Pa. State Roads
- Local Roads
- Streams
- Wetlands
- Municipal Boundaries
- Soil Boundary
- ArB Soils Label

Wetland Delineation
 Figure 4.1: Soils Map
 Chanceford 500kV-230kV Substation
 Chanceford Township
 York County
 Airville Quad



GIS DATA FROM PASDA AND YORK COUNTY

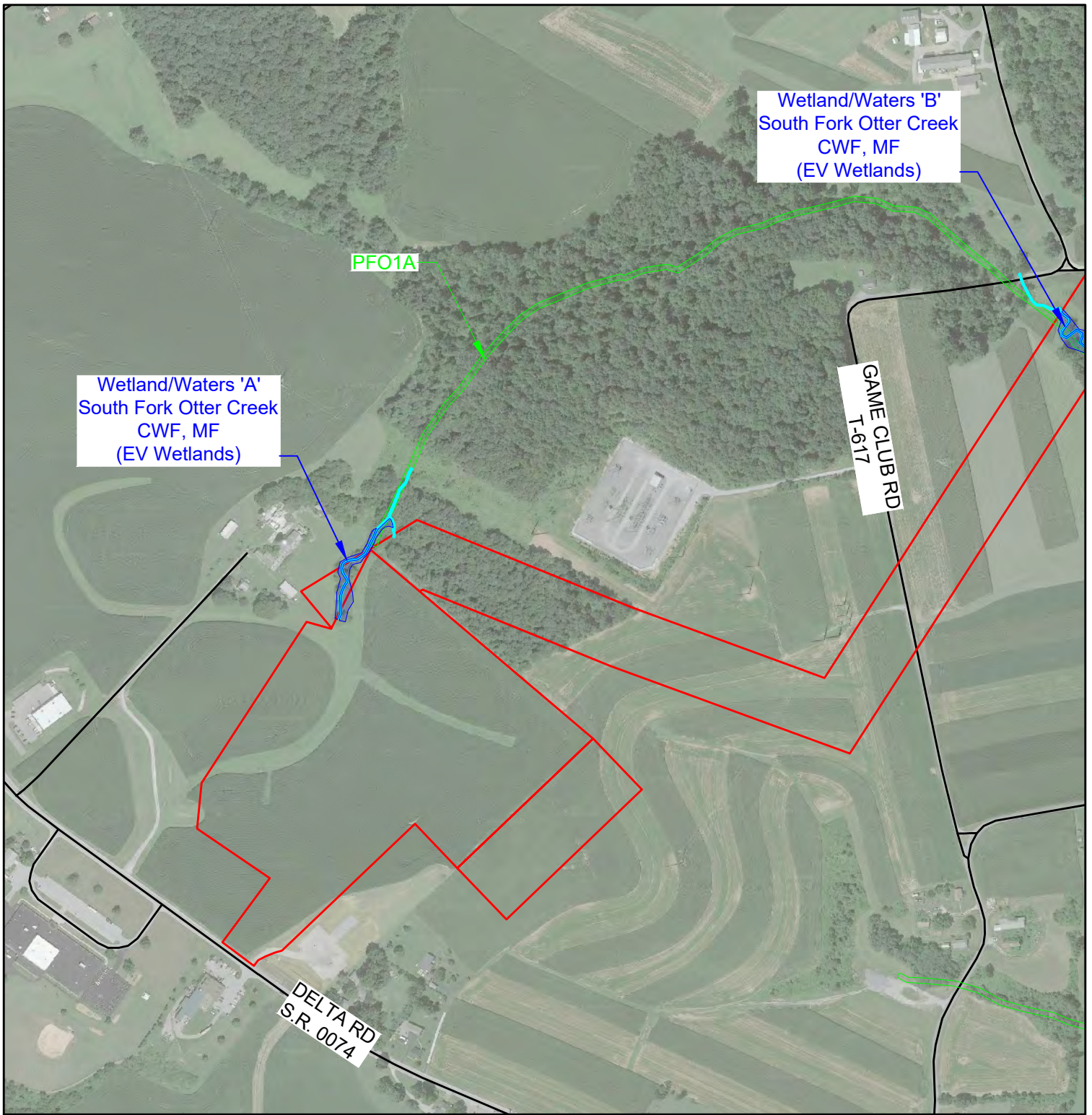


NORTH

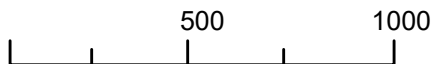
Legend

- Project Boundary
- Pa. State Roads
- Local Roads
- Streams
- Wetlands
- Municipal Boundaries
- Soil Boundary
- ArB Soils Label

Wetland Delineation
 Figure 4.2: Soils Map
 Chanceford 500kV-230kV Substation
 Chanceford Township
 York County
 Airville Quad



GIS DATA FROM PASDA AND YORK COUNTY

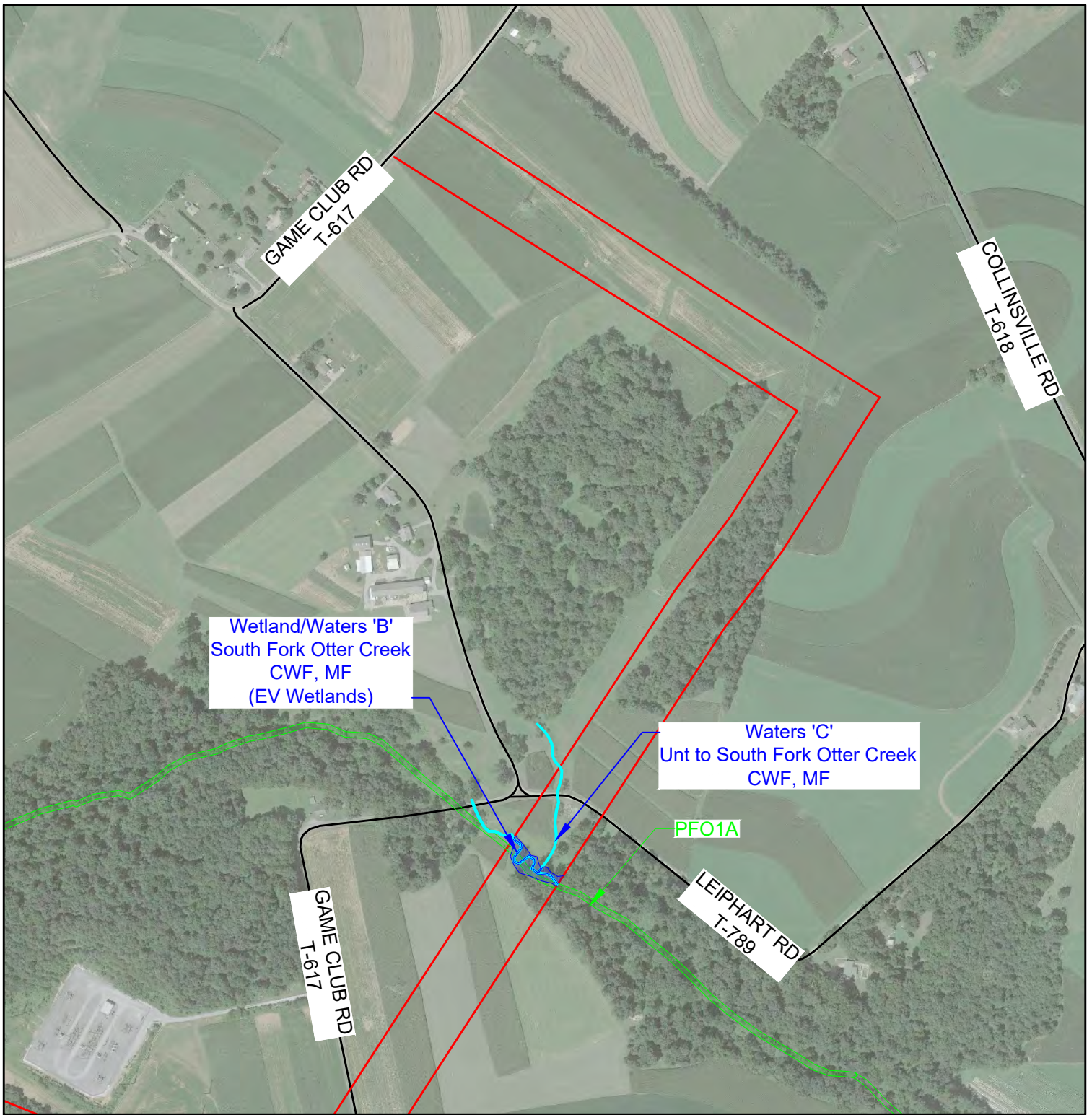


NORTH

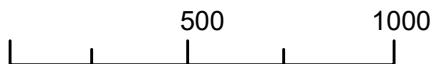
Legend

- Project Boundary
- Pa. State Roads
- Local Roads
- Streams
- Municipal Boundaries
- Wetlands
- NWI

Wetland Delineation
 Figure 5.1: NWI Map
 Chanceford 500kV-230kV Substation
 Chanceford Township
 York County
 Airville Quad



GIS DATA FROM PASDA AND YORK COUNTY

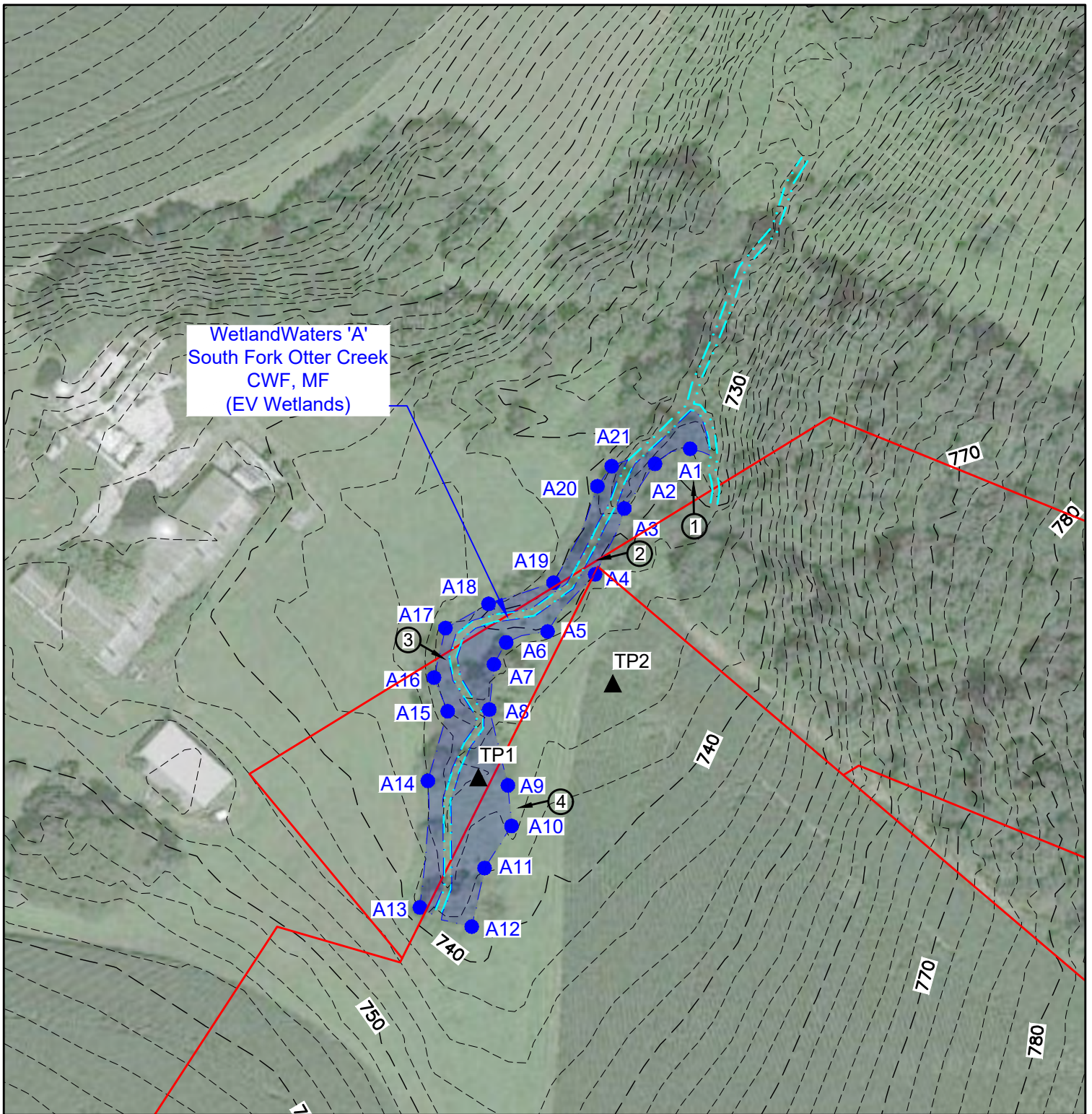


NORTH

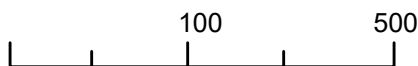
Legend

- Project Boundary
- Pa. State Roads
- Local Roads
- Streams
- Municipal Boundaries
- Wetlands
- NWI

Wetland Delineation
Figure 5.2: NWI Map
Chanceford 500kV-230kV Substation
Chanceford Township
York County
Airville Quad



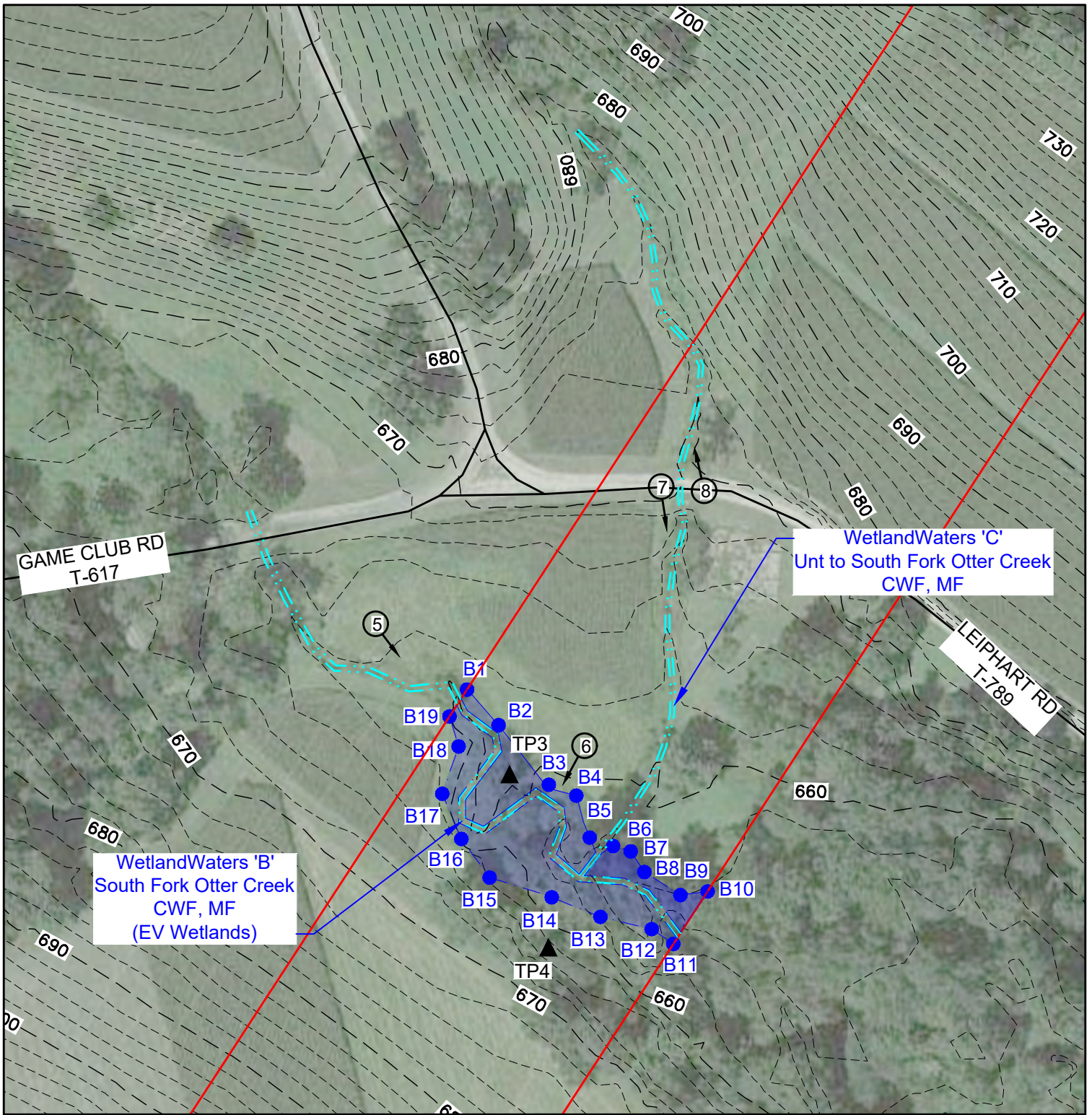
GIS DATA FROM PASDA AND YORK COUNTY



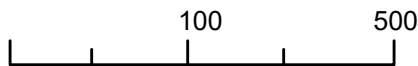
Legend

- Project Boundary
- Pa. State Roads
- Local Roads
- Streams
- Municipal Boundaries
- Wetlands
- G1 Wetland Flag
- ▲ TP1 Test Pit Location
- 1 → Photo Location and Direction
- 2' Contours

Wetland Delineation
 Figure 6.1: Photo and Flag Location Map
 Chanceford 500kV-230kV Substation
 Chanceford Township
 York County
 Airville Quad



GIS DATA FROM PASDA AND YORK COUNTY



Legend

- Project Boundary
- Pa. State Roads
- Local Roads
- Streams
- Municipal Boundaries
- Wetlands
- G1 Wetland Flag
- ▲ TP1 Test Pit Location
- 1 → Photo Location and Direction
- 2' Contours

Wetland Delineation
 Figure 6.2: Photo and Flag Location Map
 Chanceford 500kV-230kV Substation
 Chanceford Township
 York County
 Airville Quad



Photo 1



Photo 2



Photo 3



Photo 4

Wetland Delineation
Figure 7.1:Photos
Chanceford 500kV-230kV Substation
Chanceford Township
York County
Airville Quad



Photo 5



Photo 6



Photo 7



Photo 8

Wetland Delineation
Figure 7.2: Photos
Chanceford 500kV-230kV Substation
Chanceford Township
York County
Airville Quad

WETLAND DETERMINATION DATA FORM – Eastern Mountains and Piedmont

Project/Site: Chanceford 500kV-230kV Substation City/County: York Sampling Date: 5.08.2024
 Applicant/Owner: PPL Electric Utilities Corporation State: PA Sampling Point: TP 1
 Investigator(s): Emily Wood, Nicole Billard Section, Township, Range: Chanceford Township
 Landform (hillslope, terrace, etc.): Floodplain Local relief (concave, convex, none): Concave Slope (%): 0-3%
 Subregion (LRR or MLRA): MLRA 222, LRR N Lat: 39.863654 Long: -76.457553 Datum: WGS 84
 Soil Map Unit Name: GdA- Glenville silt loam NWI classification: PFO1A

Are climatic / hydrologic conditions on the site typical for this time of year? Yes No _____ (If no, explain in Remarks.)
 Are Vegetation No, Soil No, or Hydrology No significantly disturbed? Are "Normal Circumstances" present? Yes No _____
 Are Vegetation No, Soil No, or Hydrology No naturally problematic? (If needed, explain any answers in Remarks.)

SUMMARY OF FINDINGS – Attach site map showing sampling point locations, transects, important features, etc.

Hydrophytic Vegetation Present? Yes <input checked="" type="checkbox"/> No _____ Hydric Soil Present? Yes <input checked="" type="checkbox"/> No _____ Wetland Hydrology Present? Yes <input checked="" type="checkbox"/> No _____	Is the Sampled Area within a Wetland? Yes <input checked="" type="checkbox"/> No _____
Remarks: Meets all three criteria. Wetland/Waters A	

HYDROLOGY

Wetland Hydrology Indicators: <u>Primary Indicators (minimum of one is required; check all that apply)</u> <input checked="" type="checkbox"/> Surface Water (A1) _____ True Aquatic Plants (B14) <input checked="" type="checkbox"/> High Water Table (A2) _____ Hydrogen Sulfide Odor (C1) <input checked="" type="checkbox"/> Saturation (A3) _____ Oxidized Rhizospheres on Living Roots (C3) _____ Water Marks (B1) _____ Presence of Reduced Iron (C4) _____ Sediment Deposits (B2) _____ Recent Iron Reduction in Tilled Soils (C6) _____ Drift Deposits (B3) _____ Thin Muck Surface (C7) _____ Algal Mat or Crust (B4) _____ Other (Explain in Remarks) _____ Iron Deposits (B5) _____ Inundation Visible on Aerial Imagery (B7) _____ Water-Stained Leaves (B9) _____ Aquatic Fauna (B13)	<u>Secondary Indicators (minimum of two required)</u> _____ Surface Soil Cracks (B6) _____ Sparsely Vegetated Concave Surface (B8) <input checked="" type="checkbox"/> Drainage Patterns (B10) _____ Moss Trim Lines (B16) _____ Dry-Season Water Table (C2) _____ Crayfish Burrows (C8) _____ Saturation Visible on Aerial Imagery (C9) _____ Stunted or Stressed Plants (D1) <input checked="" type="checkbox"/> Geomorphic Position (D2) _____ Shallow Aquitard (D3) <input checked="" type="checkbox"/> Microtopographic Relief (D4) _____ FAC-Neutral Test (D5)
--	--

Field Observations: Surface Water Present? Yes <input checked="" type="checkbox"/> No _____ Depth (inches): _____ Water Table Present? Yes <input checked="" type="checkbox"/> No _____ Depth (inches): _____ Saturation Present? Yes <input checked="" type="checkbox"/> No _____ Depth (inches): _____ (includes capillary fringe)	Wetland Hydrology Present? Yes <input checked="" type="checkbox"/> No _____
---	--

Describe Recorded Data (stream gauge, monitoring well, aerial photos, previous inspections), if available:
Google Maps

Remarks:
Evidence of water table immediately below the surface for 12.5 percent of the growing season measured in consecutive days.

VEGETATION (Five Strata) – Use scientific names of plants.

Sampling Point: TP 1

<u>Tree Stratum</u> (Plot size: <u>30' Dia</u>)	Absolute % Cover	Dominant Species?	Indicator Status	Dominance Test worksheet:																
1. _____	_____	_____	_____	Number of Dominant Species That Are OBL, FACW, or FAC: <u>2</u> (A)																
2. _____	_____	_____	_____	Total Number of Dominant Species Across All Strata: <u>2</u> (B)																
3. _____	_____	_____	_____	Percent of Dominant Species That Are OBL, FACW, or FAC: <u>100</u> (A/B)																
4. _____	_____	_____	_____	Prevalence Index worksheet: <table style="width:100%; border-collapse: collapse;"> <tr> <td style="width:50%;"><u>Total % Cover of:</u></td> <td style="width:50%;"><u>Multiply by:</u></td> </tr> <tr> <td>OBL species <u>70</u></td> <td>x 1 = <u>70</u></td> </tr> <tr> <td>FACW species <u>35</u></td> <td>x 2 = <u>70</u></td> </tr> <tr> <td>FAC species <u>10</u></td> <td>x 3 = <u>30</u></td> </tr> <tr> <td>FACU species <u>0</u></td> <td>x 4 = <u>0</u></td> </tr> <tr> <td>UPL species <u>0</u></td> <td>x 5 = <u>0</u></td> </tr> <tr> <td>Column Totals: <u>105</u> (A)</td> <td><u>170</u> (B)</td> </tr> <tr> <td colspan="2" style="text-align: center;">Prevalence Index = B/A = <u>1.62</u></td> </tr> </table>	<u>Total % Cover of:</u>	<u>Multiply by:</u>	OBL species <u>70</u>	x 1 = <u>70</u>	FACW species <u>35</u>	x 2 = <u>70</u>	FAC species <u>10</u>	x 3 = <u>30</u>	FACU species <u>0</u>	x 4 = <u>0</u>	UPL species <u>0</u>	x 5 = <u>0</u>	Column Totals: <u>105</u> (A)	<u>170</u> (B)	Prevalence Index = B/A = <u>1.62</u>	
<u>Total % Cover of:</u>	<u>Multiply by:</u>																			
OBL species <u>70</u>	x 1 = <u>70</u>																			
FACW species <u>35</u>	x 2 = <u>70</u>																			
FAC species <u>10</u>	x 3 = <u>30</u>																			
FACU species <u>0</u>	x 4 = <u>0</u>																			
UPL species <u>0</u>	x 5 = <u>0</u>																			
Column Totals: <u>105</u> (A)	<u>170</u> (B)																			
Prevalence Index = B/A = <u>1.62</u>																				
5. _____	_____	_____	_____																	
6. _____	_____	_____	_____																	
7. _____	_____	_____	_____																	
<u>0</u> = Total Cover																				
<u>Sapling Stratum</u> (Plot size: <u>15' Dia</u>)	Absolute % Cover	Dominant Species?	Indicator Status	Hydrophytic Vegetation Indicators: <input checked="" type="checkbox"/> 1 - Rapid Test for Hydrophytic Vegetation <input checked="" type="checkbox"/> 2 - Dominance Test is >50% <input checked="" type="checkbox"/> 3 - Prevalence Index is ≤3.0 ¹ <input type="checkbox"/> 4 - Morphological Adaptations ¹ (Provide supporting data in Remarks or on a separate sheet) <input type="checkbox"/> Problematic Hydrophytic Vegetation ¹ (Explain) ¹ Indicators of hydric soil and wetland hydrology must be present, unless disturbed or problematic.																
1. _____	_____	_____	_____																	
2. _____	_____	_____	_____																	
3. _____	_____	_____	_____																	
4. _____	_____	_____	_____																	
5. _____	_____	_____	_____																	
6. _____	_____	_____	_____																	
7. _____	_____	_____	_____																	
<u>0</u> = Total Cover																				
<u>Shrub Stratum</u> (Plot size: <u>15' Dia</u>)	Absolute % Cover	Dominant Species?	Indicator Status	Definitions of Five Vegetation Strata: Tree – Woody plants, excluding woody vines, approximately 20 ft (6 m) or more in height and 3 in. (7.6 cm) or larger in diameter at breast height (DBH). Sapling – Woody plants, excluding woody vines, approximately 20 ft (6 m) or more in height and less than 3 in. (7.6 cm) DBH. Shrub – Woody plants, excluding woody vines, approximately 3 to 20 ft (1 to 6 m) in height. Herb – All herbaceous (non-woody) plants, including herbaceous vines, regardless of size, and woody plants, except woody vines, less than approximately 3 ft (1 m) in height. Woody vine – All woody vines, regardless of height.																
1. <u>Lindera benzoin</u> (Northern spicebush)	<u>10</u>	<u>Yes</u>	<u>FAC</u>																	
2. <u>Platanus occidentalis</u> (American sycamore)	<u>5</u>	<u>No</u>	<u>FACW</u>																	
3. _____	_____	_____	_____																	
4. _____	_____	_____	_____																	
5. _____	_____	_____	_____																	
6. _____	_____	_____	_____																	
7. _____	_____	_____	_____																	
<u>15</u> = Total Cover																				
<u>Herb Stratum</u> (Plot size: <u>5' Dia</u>)	Absolute % Cover	Dominant Species?	Indicator Status																	
1. <u>Onolea sensibillus</u> (Sensitive fern)	<u>60</u>	<u>Yes</u>	<u>OBL</u>																	
2. <u>Osmunda cinnamomea</u> (Cinnamon fern)	<u>20</u>	<u>No</u>	<u>FACW</u>																	
3. <u>Symplocarpus foetidus</u> (Skunk cabbage)	<u>10</u>	<u>No</u>	<u>OBL</u>																	
4. <u>Poa trivialis</u> (Rough bluegrass)	<u>10</u>	<u>No</u>	<u>FACW</u>																	
5. _____	_____	_____	_____																	
6. _____	_____	_____	_____																	
7. _____	_____	_____	_____																	
8. _____	_____	_____	_____																	
9. _____	_____	_____	_____																	
10. _____	_____	_____	_____																	
11. _____	_____	_____	_____																	
12. _____	_____	_____	_____																	
<u>100</u> = Total Cover																				
<u>Woody Vine Stratum</u> (Plot size: _____)	Absolute % Cover	Dominant Species?	Indicator Status	Hydrophytic Vegetation Present? Yes <u>x</u> No _____																
1. _____	_____	_____	_____																	
2. _____	_____	_____	_____																	
3. _____	_____	_____	_____																	
4. _____	_____	_____	_____																	
5. _____	_____	_____	_____																	
<u>0</u> = Total Cover																				

Remarks: (Include photo numbers here or on a separate sheet.)

See photos 1-4
Meets rapid, dominance or prevalence test.

SOIL

Sampling Point: TP 1

Profile Description: (Describe to the depth needed to document the indicator or confirm the absence of indicators.)

Depth (inches)	Matrix		Redox Features				Texture	Remarks
	Color (moist)	%	Color (moist)	%	Type ¹	Loc ²		
0-4	10YR 4/2	88	10YR 5/2	10	D	M	silt loam	granular structure, 2 % rock fragments
4-12	2.5YR 6/2	90	10YR 5/2	10	D	M	silt loam	blocky structure
12-16	10YR 5/2	90	10YR 5/1	10	D	M	silt loam	blocky structure

¹Type: C=Concentration, D=Depletion, RM=Reduced Matrix, MS=Masked Sand Grains. ²Location: PL=Pore Lining, M=Matrix.

Hydric Soil Indicators:

- Histosol (A1)
- Histic Epipedon (A2)
- Black Histic (A3)
- Hydrogen Sulfide (A4)
- Stratified Layers (A5)
- 2 cm Muck (A10) (**LRR N**)
- Depleted Below Dark Surface (A11)
- Thick Dark Surface (A12)
- Sandy Mucky Mineral (S1) (**LRR N, MLRA 147, 148**)
- Sandy Gleyed Matrix (S4)
- Sandy Redox (S5)
- Stripped Matrix (S6)

- Dark Surface (S7)
- Polyvalue Below Surface (S8) (**MLRA 147, 148**)
- Thin Dark Surface (S9) (**MLRA 147, 148**)
- Loamy Gleyed Matrix (F2)
- Depleted Matrix (F3)
- Redox Dark Surface (F6)
- Depleted Dark Surface (F7)
- Redox Depressions (F8)
- Iron-Manganese Masses (F12) (**LRR N, MLRA 136**)
- Umbric Surface (F13) (**MLRA 136, 122**)
- Piedmont Floodplain Soils (F19) (**MLRA 148**)

Indicators for Problematic Hydric Soils³:

- 2 cm Muck (A10) (**MLRA 147**)
- Coast Prairie Redox (A16) (**MLRA 147, 148**)
- Piedmont Floodplain Soils (F19) (**MLRA 136, 147**)
- Red Parent Material (TF2)
- Very Shallow Dark Surface (TF12)
- Other (Explain in Remarks)

³Indicators of hydrophytic vegetation and wetland hydrology must be present, unless disturbed or problematic.

Restrictive Layer (if observed):

Type: _____
 Depth (inches): _____

Hydric Soil Present? Yes No _____

Remarks:

Immediately below the surface the chroma as < 3;
 Mottling within the matrix.

Soils found on site are Baile. Soils mapped are Glenville. Baile soil is a hydric inclusion found within Glenville soils.

WETLAND DETERMINATION DATA FORM – Eastern Mountains and Piedmont

Project/Site: Chanceford 500kV-230kV Substation City/County: York Sampling Date: 5.08.2024
 Applicant/Owner: PPL Electric Utilities Corporation State: PA Sampling Point: TP 2
 Investigator(s): Emily Wood, Nicole Billard Section, Township, Range: Chanceford Township
 Landform (hillslope, terrace, etc.): Hillslope Local relief (concave, convex, none): none Slope (%): 0-3%
 Subregion (LRR or MLRA): MLRA 222, LRR N Lat: 39.863838 Long: -76.457207 Datum: WGS 84
 Soil Map Unit Name: GdA- Glenville silt loam NWI classification: n/a

Are climatic / hydrologic conditions on the site typical for this time of year? Yes No (If no, explain in Remarks.)
 Are Vegetation No, Soil No, or Hydrology No significantly disturbed? Are "Normal Circumstances" present? Yes No
 Are Vegetation No, Soil No, or Hydrology No naturally problematic? (If needed, explain any answers in Remarks.)

SUMMARY OF FINDINGS – Attach site map showing sampling point locations, transects, important features, etc.

Hydrophytic Vegetation Present? Yes <input type="checkbox"/> No <input checked="" type="checkbox"/> Hydric Soil Present? Yes <input type="checkbox"/> No <input checked="" type="checkbox"/> Wetland Hydrology Present? Yes <input type="checkbox"/> No <input checked="" type="checkbox"/>	Is the Sampled Area within a Wetland? Yes <input type="checkbox"/> No <input checked="" type="checkbox"/>
Remarks: Does not meet all three criteria.	

HYDROLOGY

Wetland Hydrology Indicators: <u>Primary Indicators (minimum of one is required; check all that apply)</u> <input type="checkbox"/> Surface Water (A1) <input type="checkbox"/> True Aquatic Plants (B14) <input type="checkbox"/> High Water Table (A2) <input type="checkbox"/> Hydrogen Sulfide Odor (C1) <input type="checkbox"/> Saturation (A3) <input type="checkbox"/> Oxidized Rhizospheres on Living Roots (C3) <input type="checkbox"/> Water Marks (B1) <input type="checkbox"/> Presence of Reduced Iron (C4) <input type="checkbox"/> Sediment Deposits (B2) <input type="checkbox"/> Recent Iron Reduction in Tilled Soils (C6) <input type="checkbox"/> Drift Deposits (B3) <input type="checkbox"/> Thin Muck Surface (C7) <input type="checkbox"/> Algal Mat or Crust (B4) <input type="checkbox"/> Other (Explain in Remarks) <input type="checkbox"/> Iron Deposits (B5) <input type="checkbox"/> Inundation Visible on Aerial Imagery (B7) <input type="checkbox"/> Water-Stained Leaves (B9) <input type="checkbox"/> Aquatic Fauna (B13)	<u>Secondary Indicators (minimum of two required)</u> <input type="checkbox"/> Surface Soil Cracks (B6) <input type="checkbox"/> Sparsely Vegetated Concave Surface (B8) <input type="checkbox"/> Drainage Patterns (B10) <input type="checkbox"/> Moss Trim Lines (B16) <input type="checkbox"/> Dry-Season Water Table (C2) <input type="checkbox"/> Crayfish Burrows (C8) <input type="checkbox"/> Saturation Visible on Aerial Imagery (C9) <input type="checkbox"/> Stunted or Stressed Plants (D1) <input type="checkbox"/> Geomorphic Position (D2) <input type="checkbox"/> Shallow Aquitard (D3) <input type="checkbox"/> Microtopographic Relief (D4) <input type="checkbox"/> FAC-Neutral Test (D5)
--	--

Field Observations: Surface Water Present? Yes <input type="checkbox"/> No <input checked="" type="checkbox"/> Depth (inches): _____ Water Table Present? Yes <input type="checkbox"/> No <input checked="" type="checkbox"/> Depth (inches): _____ Saturation Present? (includes capillary fringe) Yes <input type="checkbox"/> No <input checked="" type="checkbox"/> Depth (inches): _____	Wetland Hydrology Present? Yes <input type="checkbox"/> No <input type="checkbox"/>
---	--

Describe Recorded Data (stream gauge, monitoring well, aerial photos, previous inspections), if available:

Google Maps

Remarks:
No evidence of water table at or near the surface for 12.5% of the growing season, measured in consecutive days.

SOIL

Sampling Point: TP 2

Profile Description: (Describe to the depth needed to document the indicator or confirm the absence of indicators.)

Depth (inches)	Matrix		Redox Features				Texture	Remarks
	Color (moist)	%	Color (moist)	%	Type ¹	Loc ²		
0-10	10YR 4/3	95					silt loam	granular structure, 5% coarse fragments
10-14	10YR 5/4	97					silt loam	blocky structure, 3% coarse fragments
14-16	10YR 5/4	95					silt loam	blocky structure, 5% coarse fragments

¹Type: C=Concentration, D=Depletion, RM=Reduced Matrix, MS=Masked Sand Grains.

²Location: PL=Pore Lining, M=Matrix.

Hydric Soil Indicators:

- Histosol (A1)
- Histic Epipedon (A2)
- Black Histic (A3)
- Hydrogen Sulfide (A4)
- Stratified Layers (A5)
- 2 cm Muck (A10) **(LRR N)**
- Depleted Below Dark Surface (A11)
- Thick Dark Surface (A12)
- Sandy Mucky Mineral (S1) **(LRR N, MLRA 147, 148)**
- Sandy Gleyed Matrix (S4)
- Sandy Redox (S5)
- Stripped Matrix (S6)

- Dark Surface (S7)
- Polyvalue Below Surface (S8) **(MLRA 147, 148)**
- Thin Dark Surface (S9) **(MLRA 147, 148)**
- Loamy Gleyed Matrix (F2)
- Depleted Matrix (F3)
- Redox Dark Surface (F6)
- Depleted Dark Surface (F7)
- Redox Depressions (F8)
- Iron-Manganese Masses (F12) **(LRR N, MLRA 136)**
- Umbric Surface (F13) **(MLRA 136, 122)**
- Piedmont Floodplain Soils (F19) **(MLRA 148)**

Indicators for Problematic Hydric Soils³:

- 2 cm Muck (A10) **(MLRA 147)**
- Coast Prairie Redox (A16) **(MLRA 147, 148)**
- Piedmont Floodplain Soils (F19) **(MLRA 136, 147)**
- Red Parent Material (TF2)
- Very Shallow Dark Surface (TF12)
- Other (Explain in Remarks)

³Indicators of hydrophytic vegetation and wetland hydrology must be present, unless disturbed or problematic.

Restrictive Layer (if observed):

Type: _____
 Depth (inches): _____

Hydric Soil Present? Yes _____ No ^X _____

Remarks:

Chroma of matrix >2.

WETLAND DETERMINATION DATA FORM – Eastern Mountains and Piedmont

Project/Site: Chanceford 500kV-230kV Substation City/County: York Sampling Date: 5.08.2024
 Applicant/Owner: PPL Electric Utilities Corporation State: PA Sampling Point: TP 3
 Investigator(s): Emily Wood, Nicole Billard Section, Township, Range: Chanceford Township
 Landform (hillslope, terrace, etc.): Floodplain Local relief (concave, convex, none): Concave Slope (%): 0-3%
 Subregion (LRR or MLRA): MLRA 222, LRR N Lat: 39.866180 Long: -76.448193 Datum: WGS 84
 Soil Map Unit Name: Cm- Codorus silt loam NWI classification: PFO1A

Are climatic / hydrologic conditions on the site typical for this time of year? Yes No _____ (If no, explain in Remarks.)
 Are Vegetation No, Soil No, or Hydrology No significantly disturbed? Are "Normal Circumstances" present? Yes No _____
 Are Vegetation No, Soil No, or Hydrology No naturally problematic? (If needed, explain any answers in Remarks.)

SUMMARY OF FINDINGS – Attach site map showing sampling point locations, transects, important features, etc.

Hydrophytic Vegetation Present? Yes <input checked="" type="checkbox"/> No _____ Hydric Soil Present? Yes <input checked="" type="checkbox"/> No _____ Wetland Hydrology Present? Yes <input checked="" type="checkbox"/> No _____	Is the Sampled Area within a Wetland? Yes <input checked="" type="checkbox"/> No _____
Remarks: Meets all three criteria. Wetland/Waters B	

HYDROLOGY

Wetland Hydrology Indicators: <u>Primary Indicators (minimum of one is required; check all that apply)</u> <input checked="" type="checkbox"/> Surface Water (A1) _____ True Aquatic Plants (B14) <input checked="" type="checkbox"/> High Water Table (A2) _____ Hydrogen Sulfide Odor (C1) <input checked="" type="checkbox"/> Saturation (A3) _____ Oxidized Rhizospheres on Living Roots (C3) _____ Water Marks (B1) _____ Presence of Reduced Iron (C4) _____ Sediment Deposits (B2) _____ Recent Iron Reduction in Tilled Soils (C6) _____ Drift Deposits (B3) _____ Thin Muck Surface (C7) _____ Algal Mat or Crust (B4) _____ Other (Explain in Remarks) _____ Iron Deposits (B5) _____ Inundation Visible on Aerial Imagery (B7) _____ Water-Stained Leaves (B9) _____ Aquatic Fauna (B13)	<u>Secondary Indicators (minimum of two required)</u> _____ Surface Soil Cracks (B6) _____ Sparsely Vegetated Concave Surface (B8) <input checked="" type="checkbox"/> Drainage Patterns (B10) _____ Moss Trim Lines (B16) _____ Dry-Season Water Table (C2) _____ Crayfish Burrows (C8) _____ Saturation Visible on Aerial Imagery (C9) _____ Stunted or Stressed Plants (D1) <input checked="" type="checkbox"/> Geomorphic Position (D2) _____ Shallow Aquitard (D3) <input checked="" type="checkbox"/> Microtopographic Relief (D4) _____ FAC-Neutral Test (D5)
Field Observations: Surface Water Present? Yes <input checked="" type="checkbox"/> No _____ Depth (inches): _____ Water Table Present? Yes <input checked="" type="checkbox"/> No _____ Depth (inches): _____ Saturation Present? Yes <input checked="" type="checkbox"/> No _____ Depth (inches): _____ (includes capillary fringe)	Wetland Hydrology Present? Yes <input checked="" type="checkbox"/> No _____

Describe Recorded Data (stream gauge, monitoring well, aerial photos, previous inspections), if available:
Google Maps

Remarks:
Evidence of water table immediately below the surface for 12.5 percent of the growing season measured in consecutive days.

VEGETATION (Five Strata) – Use scientific names of plants.

Sampling Point: TP 3

<u>Tree Stratum</u> (Plot size: <u>30' Dia</u>)	Absolute % Cover	Dominant Species?	Indicator Status	Dominance Test worksheet:
1. _____	_____	_____	_____	Number of Dominant Species That Are OBL, FACW, or FAC: <u>2</u> (A)
2. _____	_____	_____	_____	Total Number of Dominant Species Across All Strata: <u>2</u> (B)
3. _____	_____	_____	_____	Percent of Dominant Species That Are OBL, FACW, or FAC: <u>100</u> (A/B)
4. _____	_____	_____	_____	Prevalence Index worksheet: <u>Total % Cover of:</u> <u>Multiply by:</u> OBL species <u>25</u> x 1 = <u>25</u> FACW species <u>70</u> x 2 = <u>140</u> FAC species <u>20</u> x 3 = <u>60</u> FACU species <u>0</u> x 4 = <u>0</u> UPL species <u>0</u> x 5 = <u>0</u> Column Totals: <u>115</u> (A) <u>225</u> (B) Prevalence Index = B/A = <u>1.96</u>
5. _____	_____	_____	_____	
6. _____	_____	_____	_____	
7. _____	_____	_____	_____	
<u>0</u> = Total Cover				
Sapling Stratum (Plot size: <u>15' Dia</u>)				
1. _____	_____	_____	_____	
2. _____	_____	_____	_____	
3. _____	_____	_____	_____	
4. _____	_____	_____	_____	
5. _____	_____	_____	_____	
6. _____	_____	_____	_____	
7. _____	_____	_____	_____	
<u>0</u> = Total Cover				
Shrub Stratum (Plot size: <u>15' Dia</u>)				
1. <u>Platanus occidentalis</u> (American sycamore)	<u>10</u>	<u>Yes</u>	<u>FACW</u>	
2. <u>Toxicodendron vernix</u> (Poison sumac)	<u>5</u>	<u>No</u>	<u>OBL</u>	
3. <u>Lindera benzoin</u> (American spicebush)	<u>5</u>	<u>No</u>	<u>FAC</u>	
4. _____	_____	_____	_____	
5. _____	_____	_____	_____	
6. _____	_____	_____	_____	
7. _____	_____	_____	_____	
<u>20</u> = Total Cover				
Herb Stratum (Plot size: <u>5' Dia</u>)				
1. <u>Impatiens capensis</u> (Jewelweed)	<u>45</u>	<u>Yes</u>	<u>FACW</u>	
2. <u>Symplocarpus foetidus</u> (Skunk cabbage)	<u>20</u>	<u>No</u>	<u>OBL</u>	
3. <u>Onolea sensibilis</u> (Sensitive fern)	<u>15</u>	<u>No</u>	<u>FACW</u>	
4. <u>Smilax rotundifolia</u> (Roundleaf greenbrier)	<u>15</u>	<u>No</u>	<u>FAC</u>	
5. _____	_____	_____	_____	
6. _____	_____	_____	_____	
7. _____	_____	_____	_____	
8. _____	_____	_____	_____	
9. _____	_____	_____	_____	
10. _____	_____	_____	_____	
11. _____	_____	_____	_____	
12. _____	_____	_____	_____	
<u>95</u> = Total Cover				
Woody Vine Stratum (Plot size: _____)				
1. _____	_____	_____	_____	
2. _____	_____	_____	_____	
3. _____	_____	_____	_____	
4. _____	_____	_____	_____	
5. _____	_____	_____	_____	
<u>0</u> = Total Cover				
Hydrophytic Vegetation Present? Yes <u>x</u> No _____				

Hydrophytic Vegetation Indicators:
 1 - Rapid Test for Hydrophytic Vegetation
 2 - Dominance Test is >50%
 3 - Prevalence Index is ≤3.0¹
 ___ 4 - Morphological Adaptations¹ (Provide supporting data in Remarks or on a separate sheet)
 ___ Problematic Hydrophytic Vegetation¹ (Explain)

¹Indicators of hydric soil and wetland hydrology must be present, unless disturbed or problematic.

Definitions of Five Vegetation Strata:

Tree – Woody plants, excluding woody vines, approximately 20 ft (6 m) or more in height and 3 in. (7.6 cm) or larger in diameter at breast height (DBH).

Sapling – Woody plants, excluding woody vines, approximately 20 ft (6 m) or more in height and less than 3 in. (7.6 cm) DBH.

Shrub – Woody plants, excluding woody vines, approximately 3 to 20 ft (1 to 6 m) in height.

Herb – All herbaceous (non-woody) plants, including herbaceous vines, regardless of size, and woody plants, except woody vines, less than approximately 3 ft (1 m) in height.

Woody vine – All woody vines, regardless of height.

Remarks: (Include photo numbers here or on a separate sheet.)

See photos 5&6
 Meets rapid, dominance or prevalence test.

SOIL

Sampling Point: TP 3

Profile Description: (Describe to the depth needed to document the indicator or confirm the absence of indicators.)

Depth (inches)	Matrix		Redox Features				Texture	Remarks
	Color (moist)	%	Color (moist)	%	Type ¹	Loc ²		
0-4	10YR 4/2	88	10YR 5/2	10	D	M	silt loam	granular structure, 2 % rock fragments
4-12	2.5YR 6/2	90	10YR 5/2	10	D	M	silt loam	blocky structure
12-16	10YR 5/2	90	10YR 5/1	10	D	M	silt loam	blocky structure

¹Type: C=Concentration, D=Depletion, RM=Reduced Matrix, MS=Masked Sand Grains. ²Location: PL=Pore Lining, M=Matrix.

Hydric Soil Indicators:		Indicators for Problematic Hydric Soils ³ :
<input type="checkbox"/> Histosol (A1)	<input type="checkbox"/> Dark Surface (S7)	<input type="checkbox"/> 2 cm Muck (A10) (MLRA 147)
<input type="checkbox"/> Histic Epipedon (A2)	<input type="checkbox"/> Polyvalue Below Surface (S8) (MLRA 147, 148)	<input type="checkbox"/> Coast Prairie Redox (A16)
<input type="checkbox"/> Black Histic (A3)	<input type="checkbox"/> Thin Dark Surface (S9) (MLRA 147, 148)	<input type="checkbox"/> (MLRA 147, 148)
<input type="checkbox"/> Hydrogen Sulfide (A4)	<input type="checkbox"/> Loamy Gleyed Matrix (F2)	<input type="checkbox"/> Piedmont Floodplain Soils (F19)
<input type="checkbox"/> Stratified Layers (A5)	<input checked="" type="checkbox"/> Depleted Matrix (F3)	<input type="checkbox"/> (MLRA 136, 147)
<input type="checkbox"/> 2 cm Muck (A10) (LRR N)	<input type="checkbox"/> Redox Dark Surface (F6)	<input type="checkbox"/> Red Parent Material (TF2)
<input type="checkbox"/> Depleted Below Dark Surface (A11)	<input type="checkbox"/> Depleted Dark Surface (F7)	<input type="checkbox"/> Very Shallow Dark Surface (TF12)
<input type="checkbox"/> Thick Dark Surface (A12)	<input type="checkbox"/> Redox Depressions (F8)	<input type="checkbox"/> Other (Explain in Remarks)
<input type="checkbox"/> Sandy Mucky Mineral (S1) (LRR N, MLRA 147, 148)	<input type="checkbox"/> Iron-Manganese Masses (F12) (LRR N, MLRA 136)	
<input type="checkbox"/> Sandy Gleyed Matrix (S4)	<input type="checkbox"/> Umbric Surface (F13) (MLRA 136, 122)	
<input type="checkbox"/> Sandy Redox (S5)	<input checked="" type="checkbox"/> Piedmont Floodplain Soils (F19) (MLRA 148)	
<input type="checkbox"/> Stripped Matrix (S6)		

³Indicators of hydrophytic vegetation and wetland hydrology must be present, unless disturbed or problematic.

Restrictive Layer (if observed): Type: _____ Depth (inches): _____	Hydric Soil Present? Yes <input checked="" type="checkbox"/> No _____
---	--

Remarks: Immediately below the surface the chroma as < 3;
Mottling within the matrix.

Soils found on site are Baile. Soils mapped are Codorus. Baile soil is a hydric inclusion found within Codorus soils.

WETLAND DETERMINATION DATA FORM – Eastern Mountains and Piedmont

Project/Site: Chanceford 500kV-230kV Substation City/County: York Sampling Date: 5.08.2024
 Applicant/Owner: PPL Electric Utilities Corporation State: PA Sampling Point: TP 4
 Investigator(s): Emily Wood, Nicole Billard Section, Township, Range: Chanceford Township
 Landform (hillslope, terrace, etc.): Field Local relief (concave, convex, none): none Slope (%): 0-3%
 Subregion (LRR or MLRA): MLRA 222, LRR N Lat: 39.865838 Long: -76.448098 Datum: WGS 84
 Soil Map Unit Name: Cm- Codorus silt loam NWI classification: n/a

Are climatic / hydrologic conditions on the site typical for this time of year? Yes No (If no, explain in Remarks.)
 Are Vegetation No, Soil No, or Hydrology No significantly disturbed? Are "Normal Circumstances" present? Yes No
 Are Vegetation No, Soil No, or Hydrology No naturally problematic? (If needed, explain any answers in Remarks.)

SUMMARY OF FINDINGS – Attach site map showing sampling point locations, transects, important features, etc.

Hydrophytic Vegetation Present? Yes <input type="checkbox"/> No <input checked="" type="checkbox"/> Hydric Soil Present? Yes <input type="checkbox"/> No <input checked="" type="checkbox"/> Wetland Hydrology Present? Yes <input type="checkbox"/> No <input checked="" type="checkbox"/>	Is the Sampled Area within a Wetland? Yes <input type="checkbox"/> No <input checked="" type="checkbox"/>
Remarks: Does not meet all three criteria.	

HYDROLOGY

Wetland Hydrology Indicators: <u>Primary Indicators (minimum of one is required; check all that apply)</u> <input type="checkbox"/> Surface Water (A1) <input type="checkbox"/> True Aquatic Plants (B14) <input type="checkbox"/> High Water Table (A2) <input type="checkbox"/> Hydrogen Sulfide Odor (C1) <input type="checkbox"/> Saturation (A3) <input type="checkbox"/> Oxidized Rhizospheres on Living Roots (C3) <input type="checkbox"/> Water Marks (B1) <input type="checkbox"/> Presence of Reduced Iron (C4) <input type="checkbox"/> Sediment Deposits (B2) <input type="checkbox"/> Recent Iron Reduction in Tilled Soils (C6) <input type="checkbox"/> Drift Deposits (B3) <input type="checkbox"/> Thin Muck Surface (C7) <input type="checkbox"/> Algal Mat or Crust (B4) <input type="checkbox"/> Other (Explain in Remarks) <input type="checkbox"/> Iron Deposits (B5) <input type="checkbox"/> Inundation Visible on Aerial Imagery (B7) <input type="checkbox"/> Water-Stained Leaves (B9) <input type="checkbox"/> Aquatic Fauna (B13)	<u>Secondary Indicators (minimum of two required)</u> <input type="checkbox"/> Surface Soil Cracks (B6) <input type="checkbox"/> Sparsely Vegetated Concave Surface (B8) <input type="checkbox"/> Drainage Patterns (B10) <input type="checkbox"/> Moss Trim Lines (B16) <input type="checkbox"/> Dry-Season Water Table (C2) <input type="checkbox"/> Crayfish Burrows (C8) <input type="checkbox"/> Saturation Visible on Aerial Imagery (C9) <input type="checkbox"/> Stunted or Stressed Plants (D1) <input type="checkbox"/> Geomorphic Position (D2) <input type="checkbox"/> Shallow Aquitard (D3) <input type="checkbox"/> Microtopographic Relief (D4) <input type="checkbox"/> FAC-Neutral Test (D5)
--	--

Field Observations: Surface Water Present? Yes <input type="checkbox"/> No <input checked="" type="checkbox"/> Depth (inches): _____ Water Table Present? Yes <input type="checkbox"/> No <input checked="" type="checkbox"/> Depth (inches): _____ Saturation Present? (includes capillary fringe) Yes <input type="checkbox"/> No <input checked="" type="checkbox"/> Depth (inches): _____	Wetland Hydrology Present? Yes <input type="checkbox"/> No <input type="checkbox"/>
---	--

Describe Recorded Data (stream gauge, monitoring well, aerial photos, previous inspections), if available:

Google Maps

Remarks:
No evidence of water table at or near the surface for 12.5% of the growing season, measured in consecutive days.

VEGETATION (Five Strata) – Use scientific names of plants.

Sampling Point: TP 4

	Absolute % Cover	Dominant Species?	Indicator Status															
Tree Stratum (Plot size: <u>30' Dia</u>)																		
1. <u>Acer saccharum</u> (Sugar maple)	5	Yes	FACU	Dominance Test worksheet: Number of Dominant Species That Are OBL, FACW, or FAC: <u>0</u> (A) Total Number of Dominant Species Across All Strata: <u>4</u> (B) Percent of Dominant Species That Are OBL, FACW, or FAC: <u>0</u> (A/B)														
2. _____	_____	_____	_____															
3. _____	_____	_____	_____															
4. _____	_____	_____	_____															
5. _____	_____	_____	_____															
6. _____	_____	_____	_____															
7. _____	_____	_____	_____															
<u>5</u> = Total Cover				Prevalence Index worksheet: <table style="width:100%; border:none;"> <tr> <td style="width:50%;"><u>Total % Cover of:</u></td> <td style="width:50%;"><u>Multiply by:</u></td> </tr> <tr> <td>OBL species <u>0</u></td> <td>x 1 = <u>0</u></td> </tr> <tr> <td>FACW species <u>0</u></td> <td>x 2 = <u>0</u></td> </tr> <tr> <td>FAC species <u>0</u></td> <td>x 3 = <u>0</u></td> </tr> <tr> <td>FACU species <u>60</u></td> <td>x 4 = <u>240</u></td> </tr> <tr> <td>UPL species <u>60</u></td> <td>x 5 = <u>300</u></td> </tr> <tr> <td>Column Totals: <u>120</u> (A)</td> <td><u>540</u> (B)</td> </tr> </table> Prevalence Index = B/A = <u>4.50</u>	<u>Total % Cover of:</u>	<u>Multiply by:</u>	OBL species <u>0</u>	x 1 = <u>0</u>	FACW species <u>0</u>	x 2 = <u>0</u>	FAC species <u>0</u>	x 3 = <u>0</u>	FACU species <u>60</u>	x 4 = <u>240</u>	UPL species <u>60</u>	x 5 = <u>300</u>	Column Totals: <u>120</u> (A)	<u>540</u> (B)
<u>Total % Cover of:</u>	<u>Multiply by:</u>																	
OBL species <u>0</u>	x 1 = <u>0</u>																	
FACW species <u>0</u>	x 2 = <u>0</u>																	
FAC species <u>0</u>	x 3 = <u>0</u>																	
FACU species <u>60</u>	x 4 = <u>240</u>																	
UPL species <u>60</u>	x 5 = <u>300</u>																	
Column Totals: <u>120</u> (A)	<u>540</u> (B)																	
Sapling Stratum (Plot size: <u>15' Dia</u>)																		
1. _____	_____	_____	_____															
2. _____	_____	_____	_____															
3. _____	_____	_____	_____															
4. _____	_____	_____	_____															
5. _____	_____	_____	_____															
6. _____	_____	_____	_____															
7. _____	_____	_____	_____															
<u>0</u> = Total Cover				Hydrophytic Vegetation Indicators: <input type="checkbox"/> 1 - Rapid Test for Hydrophytic Vegetation <input type="checkbox"/> 2 - Dominance Test is >50% <input type="checkbox"/> 3 - Prevalence Index is ≤3.0 ¹ <input type="checkbox"/> 4 - Morphological Adaptations ¹ (Provide supporting data in Remarks or on a separate sheet) <input type="checkbox"/> Problematic Hydrophytic Vegetation ¹ (Explain)														
Shrub Stratum (Plot size: <u>15' Dia</u>)																		
1. <u>Rosa multiflora</u> (multiflora rose)	10	Yes	FACU		¹ Indicators of hydric soil and wetland hydrology must be present, unless disturbed or problematic.													
2. _____	_____	_____	_____															
3. _____	_____	_____	_____															
4. _____	_____	_____	_____															
5. _____	_____	_____	_____															
6. _____	_____	_____	_____															
7. _____	_____	_____	_____															
<u>10</u> = Total Cover				Definitions of Five Vegetation Strata: Tree – Woody plants, excluding woody vines, approximately 20 ft (6 m) or more in height and 3 in. (7.6 cm) or larger in diameter at breast height (DBH). Sapling – Woody plants, excluding woody vines, approximately 20 ft (6 m) or more in height and less than 3 in. (7.6 cm) DBH. Shrub – Woody plants, excluding woody vines, approximately 3 to 20 ft (1 to 6 m) in height. Herb – All herbaceous (non-woody) plants, including herbaceous vines, regardless of size, and woody plants, except woody vines, less than approximately 3 ft (1 m) in height. Woody vine – All woody vines, regardless of height.														
Herb Stratum (Plot size: <u>5' Dia</u>)																		
1. <u>Zea mays</u> (corn)	60	Yes	UPL															
2. <u>Bromus arvensis</u> (Field brome)	40	No	FACU															
3. _____	_____	_____	_____															
4. _____	_____	_____	_____															
5. _____	_____	_____	_____															
6. _____	_____	_____	_____															
7. _____	_____	_____	_____															
8. _____	_____	_____	_____															
9. _____	_____	_____	_____															
10. _____	_____	_____	_____															
11. _____	_____	_____	_____															
12. _____	_____	_____	_____															
<u>100</u> = Total Cover																		
Woody Vine Stratum (Plot size: <u>30' Dia</u>)																		
1. <u>Celastrus orbiculatus</u> (Oriental bittersweet)	5	Yes	FACU	Hydrophytic Vegetation Present? Yes _____ No <u>x</u>														
2. _____	_____	_____	_____															
3. _____	_____	_____	_____															
4. _____	_____	_____	_____															
5. _____	_____	_____	_____															
<u>5</u> = Total Cover																		

Remarks: (Include photo numbers here or on a separate sheet.)

Does not pass rapid, dominance or prevalence tests.

SOIL

Sampling Point: TP 4

Profile Description: (Describe to the depth needed to document the indicator or confirm the absence of indicators.)

Depth (inches)	Matrix		Redox Features				Texture	Remarks
	Color (moist)	%	Color (moist)	%	Type ¹	Loc ²		
0-8	10YR 4/3	100					silt loam	granular structure
8-12	10YR 5/3	100					silt loam	blocky structure
12-16	10YR 4/4	100					silt loam	blocky structure

¹Type: C=Concentration, D=Depletion, RM=Reduced Matrix, MS=Masked Sand Grains. ²Location: PL=Pore Lining, M=Matrix.

Hydric Soil Indicators:		Indicators for Problematic Hydric Soils³:	
<input type="checkbox"/> Histosol (A1)	<input type="checkbox"/> Dark Surface (S7)	<input type="checkbox"/> 2 cm Muck (A10) (MLRA 147)	
<input type="checkbox"/> Histic Epipedon (A2)	<input type="checkbox"/> Polyvalue Below Surface (S8) (MLRA 147, 148)	<input type="checkbox"/> Coast Prairie Redox (A16) (MLRA 147, 148)	
<input type="checkbox"/> Black Histic (A3)	<input type="checkbox"/> Thin Dark Surface (S9) (MLRA 147, 148)	<input type="checkbox"/> Piedmont Floodplain Soils (F19) (MLRA 136, 147)	
<input type="checkbox"/> Hydrogen Sulfide (A4)	<input type="checkbox"/> Loamy Gleyed Matrix (F2)	<input type="checkbox"/> Red Parent Material (TF2)	
<input type="checkbox"/> Stratified Layers (A5)	<input type="checkbox"/> Depleted Matrix (F3)	<input type="checkbox"/> Very Shallow Dark Surface (TF12)	
<input type="checkbox"/> 2 cm Muck (A10) (LRR N)	<input type="checkbox"/> Redox Dark Surface (F6)	<input type="checkbox"/> Other (Explain in Remarks)	
<input type="checkbox"/> Depleted Below Dark Surface (A11)	<input type="checkbox"/> Depleted Dark Surface (F7)		
<input type="checkbox"/> Thick Dark Surface (A12)	<input type="checkbox"/> Redox Depressions (F8)		
<input type="checkbox"/> Sandy Mucky Mineral (S1) (LRR N, MLRA 147, 148)	<input type="checkbox"/> Iron-Manganese Masses (F12) (LRR N, MLRA 136)		
<input type="checkbox"/> Sandy Gleyed Matrix (S4)	<input type="checkbox"/> Umbric Surface (F13) (MLRA 136, 122)		
<input type="checkbox"/> Sandy Redox (S5)	<input type="checkbox"/> Piedmont Floodplain Soils (F19) (MLRA 148)		
<input type="checkbox"/> Stripped Matrix (S6)			

³Indicators of hydrophytic vegetation and wetland hydrology must be present, unless disturbed or problematic.

Restrictive Layer (if observed): Type: _____ Depth (inches): _____	Hydric Soil Present? Yes _____ No ^X _____
---	--

Remarks: Chroma of matrix >2.

Exhibit 7

1. PROJECT INFORMATION

Project Name: **Chanceford 500/230kV Substation**

Date of Review: **4/11/2024 08:49:03 AM**

Project Category: **Energy Storage, Production, and Transfer, Energy Transfer, Power/electric line - New (new location for above/under-ground line)**

Project Area: **94.39 acres**

County(s): **York**

Township/Municipality(s): **CHANCEFORD TOWNSHIP**

ZIP Code:

Quadrangle Name(s): **AIRVILLE**

Watersheds HUC 8: **Lower Susquehanna**

Watersheds HUC 12: **Bald Eagle Creek-Muddy Creek; Otter Creek**

Decimal Degrees: **39.863209, -76.453678**

Degrees Minutes Seconds: **39° 51' 47.5528" N, 76° 27' 13.2419" W**



2. SEARCH RESULTS

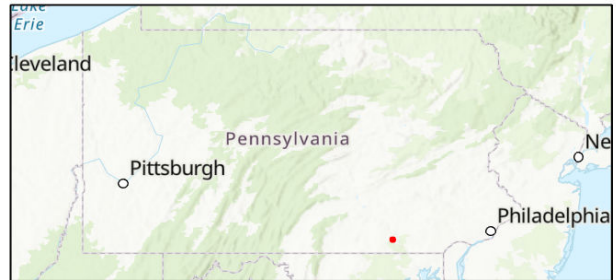
Agency	Results	Response
PA Game Commission	No Known Impact	No Further Review Required
PA Department of Conservation and Natural Resources	No Known Impact	No Further Review Required
PA Fish and Boat Commission	No Known Impact	No Further Review Required
U.S. Fish and Wildlife Service	Potential Impact	MORE INFORMATION REQUIRED, See Agency Response

As summarized above, Pennsylvania Natural Diversity Inventory (PNDI) records indicate there may be potential impacts to threatened and endangered and/or special concern species and resources within the project area. If the response above indicates "No Further Review Required" no additional communication with the respective agency is required. If the response is "Further Review Required" or "See Agency Response," refer to the appropriate agency comments below. Please see the DEP Information Section of this receipt if a PA Department of Environmental Protection Permit is required.

Chanceford 500/230kV Substation

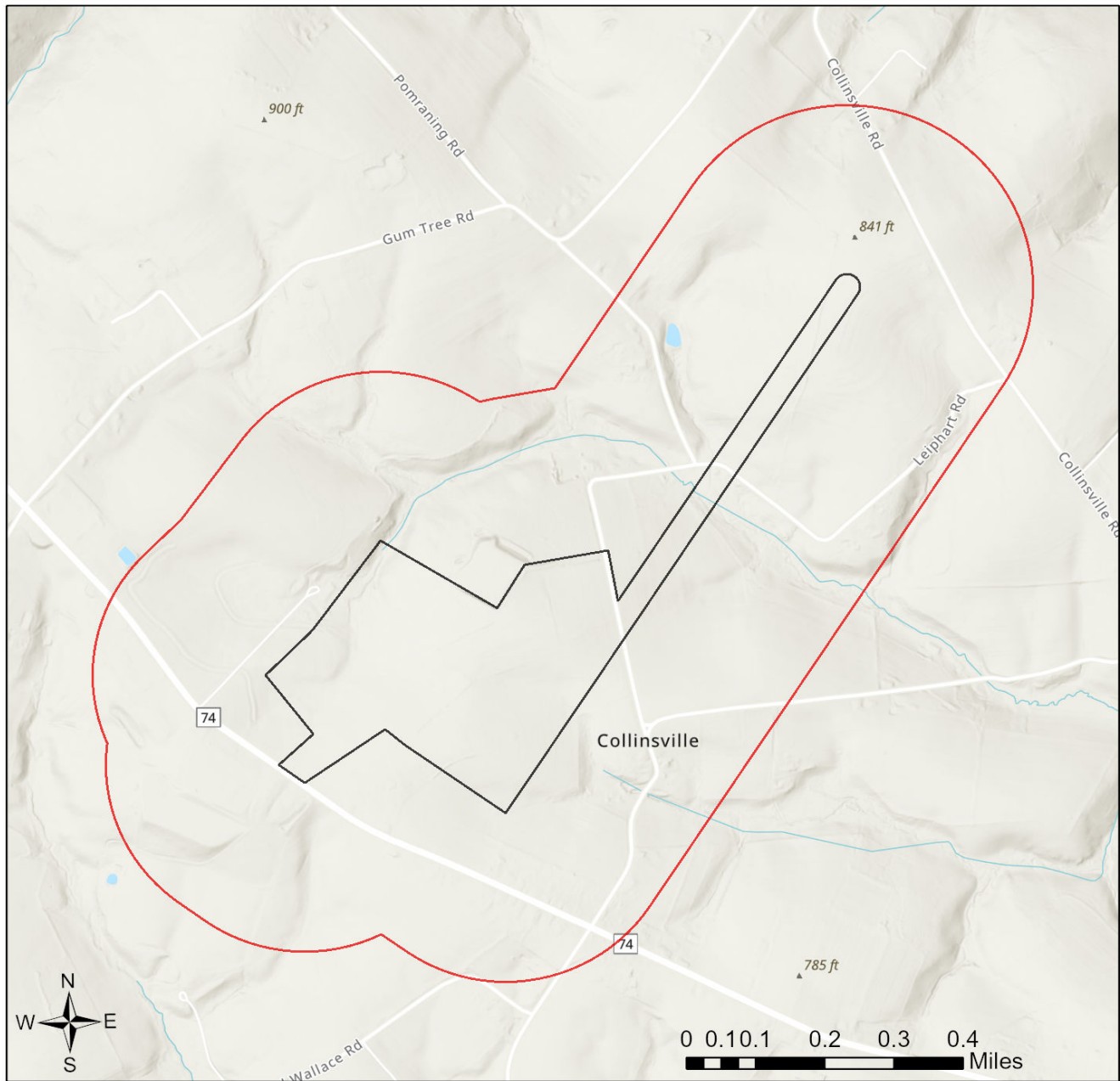




-  Buffered Project Boundary
-  Project Boundary

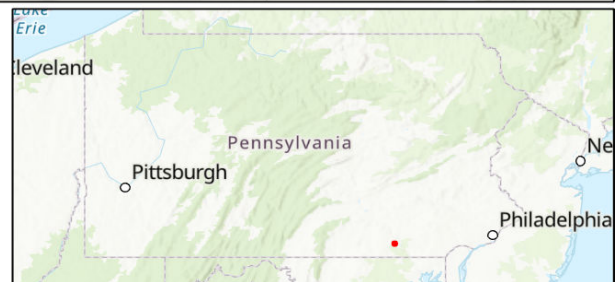


Sources: Esri, Airbus DS, USGS, NGA, NASA, CGIAR, N Robinson, NCEAS, NLS, OS, NMA, Geodatastyrelsen, Rijkswaterstaat, GSA, Geoland, FEMA, Intermap and the GIS user community

Chanceford 500/230kV Substation



-  Buffered Project Boundary
-  Project Boundary



Sources: Esri, Airbus DS, USGS, NGA, NASA, CGIAR, N Robinson, NCEAS, NLS, OS, NMA, Geodatastyrelsen, Rijkswaterstaat, GSA, Geoland, FEMA, Intermap and the GIS user community

RESPONSE TO QUESTION(S) ASKED

Q1: Accurately describe what is known about wetland presence in the project area or on the land parcel by selecting ONE of the following. "Project" includes all features of the project (including buildings, roads, utility lines, outfall and intake structures, wells, stormwater retention/detention basins, parking lots, driveways, lawns, etc.), as well as all associated impacts (e.g., temporary staging areas, work areas, temporary road crossings, areas subject to grading or clearing, etc.). Include all areas that will be permanently or temporarily affected -- either directly or indirectly -- by any type of disturbance (e.g., land clearing, grading, tree removal, flooding, etc.). Land parcel = the lot(s) on which some type of project(s) or activity(s) are proposed to occur.

Your answer is: Someone qualified to identify and delineate wetlands (holding a natural resource degree or equivalent work experience) has investigated the site, and determined that wetlands ARE located in or within 300 feet of the project area. (A written report from the wetland specialist, and detailed project maps should document this.)

Q2: The proposed project is in the range of the Indiana bat. Describe how the project will affect bat habitat (forests, woodlots and trees) and indicate what measures will be taken in consideration of this. Round acreages up to the nearest acre (e.g., 0.2 acres = 1 acre).

Your answer is: The project will affect 1 to 39 acres of forests, woodlots and trees.

Q3: Is tree removal, tree cutting or forest clearing of 40 acres or more necessary to implement all aspects of this project?

Your answer is: No

3. AGENCY COMMENTS

Regardless of whether a DEP permit is necessary for this proposed project, any potential impacts to threatened and endangered species and/or special concern species and resources must be resolved with the appropriate jurisdictional agency. In some cases, a permit or authorization from the jurisdictional agency may be needed if adverse impacts to these species and habitats cannot be avoided.

These agency determinations and responses are **valid for two years** (from the date of the review), and are based on the project information that was provided, including the exact project location; the project type, description, and features; and any responses to questions that were generated during this search. If any of the following change: 1) project location, 2) project size or configuration, 3) project type, or 4) responses to the questions that were asked during the online review, the results of this review are not valid, and the review must be searched again via the PNDI Environmental Review Tool and resubmitted to the jurisdictional agencies. The PNDI tool is a primary screening tool, and a desktop review may reveal more or fewer impacts than what is listed on this PNDI receipt. The jurisdictional agencies **strongly advise against** conducting surveys for the species listed on the receipt prior to consultation with the agencies.

PA Game Commission

RESPONSE:

No Impact is anticipated to threatened and endangered species and/or special concern species and resources.

PA Department of Conservation and Natural Resources

RESPONSE:

No Impact is anticipated to threatened and endangered species and/or special concern species and resources.

PA Fish and Boat Commission

RESPONSE:

No Impact is anticipated to threatened and endangered species and/or special concern species and resources.

U.S. Fish and Wildlife Service

RESPONSE:

Information Request: Conduct a Bog Turtle Habitat (Phase 1) Survey in accordance with USFWS Guidelines for Bog Turtle Surveys (April 2020). Evaluate all wetlands within 300 feet of the project area, which includes all areas that will be impacted by earth disturbance or project features (e.g., roads, structures, utility lines, lawns, detention basins, staging areas, etc.). IF THE PHASE 1 SURVEY IS DONE BY A QUALIFIED BOG TURTLE SURVEYOR (see [Pennsylvania Qualified Surveyors | FWS.gov](#)): 1) Send positive results to USFWS for concurrence, along with a project description documenting how impacts will be avoided. OR, conduct a Phase 2 survey and send Phase 1 and 2 results to USFWS for concurrence. 2) Send a courtesy copy of negative results to USFWS (label as "Negative Phase 1 Survey Results by Qualified Bog Turtle Surveyor: USFWS Courtesy Copy"). USFWS approval of negative results is not necessary when a qualified surveyor does the survey in full accordance with USFWS guidelines. IF THE PHASE 1 SURVEY IS NOT DONE BY A QUALIFIED SURVEYOR: Send ALL Phase 1 results to USFWS for concurrence, and if potential habitat is found, also send a project description documenting how impacts will be avoided.

As a qualified bog turtle surveyor, I _____ (name) certify that I conducted a Phase 1 survey of all wetlands in and within 300 feet of the project area on _____ (date) and determined that bog turtle habitat is absent.

_____ (Signature)

WHAT TO SEND TO JURISDICTIONAL AGENCIES

If project information was requested by one or more of the agencies above, upload* or email the following information to the agency(s) (see AGENCY CONTACT INFORMATION). Instructions for uploading project materials can be found [here](#). This option provides the applicant with the convenience of sending project materials to a single location accessible to all three state agencies (but not USFWS).

*If information was requested by USFWS, applicants must email, or mail, project information to IR1_ESPenn@fws.gov to initiate a review. USFWS will not accept uploaded project materials.

Check-list of Minimum Materials to be submitted:

____ Project narrative with a description of the overall project, the work to be performed, current physical characteristics of the site and acreage to be impacted.

____ A map with the project boundary and/or a basic site plan (particularly showing the relationship of the project to the physical features such as wetlands, streams, ponds, rock outcrops, etc.)

In addition to the materials listed above, USFWS REQUIRES the following

____ **SIGNED** copy of a Final Project Environmental Review Receipt

The inclusion of the following information may expedite the review process.

____ Color photos keyed to the basic site plan (i.e. showing on the site plan where and in what direction each photo was taken and the date of the photos)

____ Information about the presence and location of wetlands in the project area, and how this was determined (e.g., by a qualified wetlands biologist), if wetlands are present in the project area, provide project plans showing the location of all project features, as well as wetlands and streams.

4. DEP INFORMATION

The Pa Department of Environmental Protection (DEP) requires that a signed copy of this receipt, along with any required documentation from jurisdictional agencies concerning resolution of potential impacts, be submitted with applications for permits requiring PNDI review. Two review options are available to permit applicants for handling PNDI coordination in conjunction with DEP's permit review process involving either T&E Species or species of special concern. Under sequential review, the permit applicant performs a PNDI screening and completes all coordination with the appropriate jurisdictional agencies prior to submitting the permit application. The applicant will include with its application, both a PNDI receipt and/or a clearance letter from the jurisdictional agency if the PNDI Receipt shows a Potential Impact to a species or the applicant chooses to obtain letters directly from the jurisdictional agencies. Under concurrent review, DEP, where feasible, will allow technical review of the permit to occur concurrently with the T&E species consultation with the jurisdictional agency. The applicant must still supply a copy of the PNDI Receipt with its permit application. The PNDI Receipt should also be submitted to the appropriate agency according to directions on the PNDI Receipt. The applicant and the jurisdictional agency will work together to resolve the potential impact(s). See the DEP PNDI policy at <https://conservationexplorer.dcnr.pa.gov/content/resources>.

5. ADDITIONAL INFORMATION

The PNDI environmental review website is a preliminary screening tool. There are often delays in updating species status classifications. Because the proposed status represents the best available information regarding the conservation status of the species, state jurisdictional agency staff give the proposed statuses at least the same consideration as the current legal status. If surveys or further information reveal that a threatened and endangered and/or special concern species and resources exist in your project area, contact the appropriate jurisdictional agency/agencies immediately to identify and resolve any impacts.

For a list of species known to occur in the county where your project is located, please see the species lists by county found on the PA Natural Heritage Program (PNHP) home page (www.naturalheritage.state.pa.us). Also note that the PNDI Environmental Review Tool only contains information about species occurrences that have actually been reported to the PNHP.

6. AGENCY CONTACT INFORMATION

PA Department of Conservation and Natural Resources

Bureau of Forestry, Ecological Services Section
400 Market Street, PO Box 8552
Harrisburg, PA 17105-8552
Email: RA-HeritageReview@pa.gov

PA Fish and Boat Commission

Division of Environmental Services
595 E. Rolling Ridge Dr., Bellefonte, PA 16823
Email: RA-FBPACENOTIFY@pa.gov

U.S. Fish and Wildlife Service

Pennsylvania Field Office
Endangered Species Section
110 Radnor Rd; Suite 101
State College, PA 16801
Email: IR1_ESPenn@fws.gov
NO Faxes Please

PA Game Commission

Bureau of Wildlife Management
Division of Environmental Review
2001 Elmerton Avenue, Harrisburg, PA 17110-9797
Email: RA-PGC_PNDI@pa.gov
NO Faxes Please

7. PROJECT CONTACT INFORMATION

Name: Nelson O. Klitzka
Company/Business Name: PPL Electric Utilities Corporation
Address: 827 Hausman Road
City, State, Zip: Allentown, PA 18104
Phone: (610) 390-5936 Fax: ()
Email: NOKlitzka@pplweb.com

8. CERTIFICATION

I certify that ALL of the project information contained in this receipt (including project location, project size/configuration, project type, answers to questions) is true, accurate and complete. In addition, if the project type, location, size or configuration changes, or if the answers to any questions that were asked during this online review change, I agree to re-do the online environmental review.

Nelson Klitzka
applicant/project proponent signature

4/11/2024
date

PNDI # _____ USFWS Project # _____

U.S. FISH AND WILDLIFE SERVICE
110 Radnor Road, Suite 101, State College, PA 16801

This responds to your inquiry about a PNDI Internet Database search that resulted in a potential conflict with a federally listed, proposed or candidate species.

PROJECT LOCATION INFORMATION

County: _____

Township: _____

USFWS COMMENTS EMAILED MAILED

To: _____

MISC INFORMATION

Date received by FWS: _____

Email: _____

Affiliation: _____

SPECIFIC PROJECT: _____

FISH AND WILDLIFE SERVICE COMMENT(s):

___ ***NO EFFECT***

Except for occasional transient species, no federally listed, proposed or candidate species under our jurisdiction are known or likely to exist in the project area. Should project plans change, or if additional information on listed or proposed species becomes available, this determination may be reconsidered.

___ ***NOT LIKELY TO ADVERSELY AFFECT***

The federally listed _____ occurs or may occur in or near the project area. However, based on our review of the information provided, including the project description and location (_____

_____), no adverse effects to this species are likely to occur. If there is any change in the location, scale, scope, layout or design of the project, further consultation or coordination with the Service will be necessary.

The above determination is valid for two years from the date of this letter. In addition, this response relates only to federally listed, proposed, and candidate species under our jurisdiction, based on an office review of the proposed project's location and anticipated impacts. No field inspection of the project area has been conducted by this office. *Please reference the above PNDI # and USFWS Project # in any future correspondence regarding this project.*

This review was conducted by the biologist listed below. He/she can be contacted at 814-206-(Extension).

___ Pamela Shellenberger (x7459)

___ Monica Mestre (x7462)

___ Nicole Ranalli (x7455)

___ Jennifer Kagel (x7451)

___ Richard Novak (x7477)

___ Sze Wing Yu (x7461)

SIGNATURE:

Supervisor, Pennsylvania Field Office

Exhibit 8

PNDI # _____ USFWS Project # _____

U.S. FISH AND WILDLIFE SERVICE
110 Radnor Road, Suite 101, State College, PA 16801

This responds to your inquiry about a PNDI Internet Database search that resulted in a potential conflict with a federally listed, proposed or candidate species.

PROJECT LOCATION INFORMATION

County: _____

Township: _____

USFWS COMMENTS EMAILED MAILED

To: _____

MISC INFORMATION

Date received by FWS: _____

Email: _____

Affiliation: _____

SPECIFIC PROJECT: _____

FISH AND WILDLIFE SERVICE COMMENT(s):

___ ***NO EFFECT***

Except for occasional transient species, no federally listed, proposed or candidate species under our jurisdiction are known or likely to exist in the project area. Should project plans change, or if additional information on listed or proposed species becomes available, this determination may be reconsidered.

___ ***NOT LIKELY TO ADVERSELY AFFECT***

The federally listed _____ occurs or may occur in or near the project area. However, based on our review of the information provided, including the project description and location (_____

_____), no adverse effects to this species are likely to occur. If there is any change in the location, scale, scope, layout or design of the project, further consultation or coordination with the Service will be necessary.

The above determination is valid for two years from the date of this letter. In addition, this response relates only to federally listed, proposed, and candidate species under our jurisdiction, based on an office review of the proposed project's location and anticipated impacts. No field inspection of the project area has been conducted by this office. *Please reference the above PNDI # and USFWS Project # in any future correspondence regarding this project.*

This review was conducted by the biologist listed below. He/she can be contacted at 814-206-(Extension).

___ Pamela Shellenberger (x7459)

___ Monica Mestre (x7462)

___ Nicole Ranalli (x7455)

___ Jennifer Kagel (x7451)

___ Richard Novak (x7477)

___ Sze Wing Yu (x7461)

SIGNATURE:

Supervisor, Pennsylvania Field Office

Exhibit 9



December 31, 2024

Sent Via PA-SHARE

RE: ER Project # 2024PR03778.005, Chanceford 500kV Line Rebuild Project, Department of Environmental Protection, East Hopewell Township, York County

Dear Submitter,

Thank you for submitting information concerning the above referenced project. The Pennsylvania State Historic Preservation Office (PA SHPO) reviews projects in accordance with state and federal laws. Section 106 of the National Historic Preservation Act of 1966, and the implementing regulations (36 CFR Part 800) of the Advisory Council on Historic Preservation, is the primary federal legislation. The Environmental Rights amendment, Article 1, Section 27 of the Pennsylvania Constitution and the Pennsylvania History Code, 37 Pa. Cons. Stat. Section 500 et seq. (1988) is the primary state legislation. These laws include consideration of the project's potential effects on both historic and archaeological resources.

Above Ground Resources

SHPO Sends Comments - Environmental Review - SHPO Sends Above Ground Comments

Regarding Attachment B, for future submissions please include the photo numbers adjacent to the arrows on the mapping so it is easier to correlate the image shown with the location from which the photo was taken.

SHPO Sends Comments - Environmental Review - No Effect - Above Ground

Based on the information received and available within our files, we agree the introduction of the new transmission poles does not have the potential to affect historic properties due to existing intrusions associated with the existing power line, intervening distance, and tree lines that obscure the proposed new line from view. Should the scope of the project change and/or should you be made aware of historic property concerns, you will need to reinitiate consultation with our office using PA-SHARE.

For questions concerning above ground resources, please contact Barbara Frederick at bafrederic@pa.gov.

Sincerely,

A handwritten signature in black ink that reads 'B. Frederick'.

Barbara Frederick
Environmental Review Division Manager



June 2, 2025

Sent Via PA-SHARE

RE: ER Project # 2025PR01316.003, Chanceford 500/230kV Substation Project,
Department of Environmental Protection, Chanceford Township, York County

Dear Submitter,

Thank you for submitting information concerning the above referenced project. The Pennsylvania State Historic Preservation Office (PA SHPO) reviews projects in accordance with state and federal laws. Section 106 of the National Historic Preservation Act of 1966, and the implementing regulations (36 CFR Part 800) of the Advisory Council on Historic Preservation, is the primary federal legislation. The Environmental Rights amendment, Article 1, Section 27 of the Pennsylvania Constitution and the Pennsylvania History Code, 37 Pa. Cons. Stat. Section 500 et seq. (1988) is the primary state legislation. These laws include consideration of the project's potential effects on both historic and archaeological resources.

Archaeological Resources

No Archaeological Concerns - Environmental Review - Negative Survey Report/Negative Survey Form

This report meets our standards and specifications as outlined in Guidelines for Archaeological Investigations in Pennsylvania (SHPO 2021) and the Secretary of the Interior's Guidelines for Archaeological Documentation. We agree with the recommendations of this report, and in our opinion, no further archaeological work is necessary for this project. If project plans should change and/or you should be made aware of historic property concerns, please reinitiate consultation with our office using PA-SHARE.

For questions concerning archaeological resources, please contact Justin McKeel at jusmckeel@pa.gov.

Sincerely,

A handwritten signature in black ink that reads 'B. Frederick'.

Barbara Frederick
Environmental Review Division Manager

Exhibit 10

MAIT Exhibit 10

Landowners Crossed by the Project & Entities the Project is Seeking Approval From

Known persons, corporations and other entities of record owning property within the proposed right-of-way:

Glen A. Daugherty
 Susan E. Daugherty
 4087 Leiphart Road, Brogue PA 17309

Ralph E. Daugherty
 Robert L. Daugherty
 12456 Game Club Road, Brogue PA 17309

Entities the Project is Seeking Approval From:

Agency/Address	Permit/Clearance Required	Status
Pennsylvania Department of Environmental Protection Southcentral Regional Office 909 Elmerton Avenue Harrisburg, PA 17110	Individual NPDES Permit for Discharges of Stormwater Associated with Construction Activities	Permit Issued: PAD670127
Pennsylvania Game Commission Bureau of Wildlife Management Division of Environmental Review 2001 Elmerton Avenue, Harrisburg, Pennsylvania 17110	Concurrence letter for impacts to threatened and endangered species and/or special concern species and resources	No Impact Anticipated
Pennsylvania Department of Conservation and Natural Resources P.O. Box 8552 Harrisburg, PA 17015	Concurrence letter for impacts to threatened and endangered species and/or special concern species and resources	No Impacts Anticipated
Pennsylvania Fish and Boat Commission Division of Environmental Services 595 E. Rolling Rodge Drive Bellfonte, PA 16823	Concurrence letter on impacts to threatened and endangered species and/or special concern species and resources	No Impacts Anticipated
U.S. Fish and Wildlife Service 110 Radnor Road, Suite 101 State College, PA 16801	Concurrence letter for impacts to bog turtle	Not Likely to Adversely Affect
Historic Preservation Bureau 400 North St, Ste 2, Harrisburg, PA 17120	Concurrence letter for impacts to historic and archaeological resources	No Above Ground or Archaeological Concerns

**BEFORE THE
PENNSYLVANIA PUBLIC UTILITY COMMISSION**

LETTER OF NOTIFICATION OF :
MID-ATLANTIC INTERSTATE :
TRANSMISSION, LLC FOR :
APPROVAL OF THE PEACH :
BOTTOM-THREE MILE ISLAND 500 : **Docket No.** _____
KILOVOLT TRANSMISSION LINE :
LOOP TO A POINT OF :
INTERCONNECTION WITH PPL :
ELECTRIC UTILITIES :
CORPORATION PROJECT, IN :
CHANCEFORD TOWNSHIP, YORK :
COUNTY, PENNSYLVANIA :

VERIFICATION

I, Colin Nahill, state that I am a Transmission Specialist II for FirstEnergy Service Company; that I am authorized to make this Verification on behalf of Mid-Atlantic Interstate Transmission, LLC and that the facts set forth are true and correct to the best of my knowledge, information and belief. I understand that the statements herein are made subject to the penalties of 18 Pa.C.S. §4904 (relating to unsworn falsification to authorities).

March 6, 2026



Colin Nahill