



March 9, 2026

Mr. Matthew L. Homsher, Secretary
Pennsylvania Public Utility Commission
PO Box 3265
Harrisburg, PA 17105-3265

Re: PUC No. A-2024-3052694

Dear Secretary, Chiavetta:

Docket No. A-2024-3052694, please find attached for your approval of the final signed Traffic Control Plan Drawings *eFILE* for construction of State Route 136, Section C10 in Westmoreland County, consisting of sheets 1, 2, 28 through 30, 37 through 39 of 80 for a total of 8 sheets.

The Department of Transportation hereby avers that the above set of the aforesaid final Traffic Control plans are being sent to the following parties of record in accordance with the attached Certificate of Service.

The Department of Transportation request a revision of Docket A-2024-30552694 Secretarial Letter's alteration to public crossing (DOT 145 480 R). The project will not interconnect temporary traffic signals with the railroad warning devices preemption and bi-directional traffic flow. The project will detour westbound traffic east of the public crossing (DOT 145 480 R) north on North 2nd Street, only allowing eastbound traffic to go across the public crossing during the use of SR 136 temporary bridge structure.

We respectfully request the approval of these plans and the subsequent issuance of a PUC Order. Should you have any questions or concerns, please feel free to contact Thomas A. Ryczek Jr. at (724) 439 - 7190.

Sincerely,

A handwritten signature in black ink that reads "Thomas A. Ryczek Jr." in a cursive script.

Thomas A. Ryczek Jr.
District Grade Crossing Administrator
Engineering District 12-0
Department of Transportation

Attachments

cc: Parties of Record
Mark J. Chappell, P.E., Right-of-Way and Utilities Section, 7th Floor, CKB
Karen L. Cummings, Office of Chief Counsel, 9th Floor, CKB
William Sinick, P.E., Rail Safety Engineering Section, PUC, 3rd Floor, CKB

GENERAL NOTES

THIS WORK CONSISTS OF THE MAINTENANCE OF TRAFFIC AND THE PROTECTION OF THE TRAVELING PUBLIC APPROACHING THE CONSTRUCTION AREA AND WITHIN THE LIMITS OF CONSTRUCTION.

FURNISH, ERECT, PLACE AND MAINTAIN TRAFFIC CONTROL SIGNS AND DEVICES AND MAINTAIN TRAFFIC DURING HOURS OF CONSTRUCTION AND AT ALL OTHER TIMES IN ACCORDANCE WITH THE METHODS INDICATED ON THESE DRAWINGS, AND,

1. THE SPECIAL PROVISIONS OF THE CONTRACT.
2. PA CODE, TITLE 67, PUBLICATION 212, OFFICIAL TRAFFIC CONTROL DEVICES.
3. PENNDOT PUBLICATION 213, TEMPORARY TRAFFIC CONTROL GUIDELINES.
4. PENNDOT PUBLICATION 35, APPROVED CONSTRUCTION MATERIALS (BULLETIN 15).
5. PENNDOT PUBLICATION 408/2020, SPECIFICATIONS AND CURRENT INTERIMS.
6. MANUAL ON UNIFORM TRAFFIC CONTROL DEVICES (MUTCD).
7. PENNDOT PUBLICATION 148 TRAFFIC STANDARDS SIGNALS, TC-8800 SERIES.
8. PENNDOT PUBLICATION 149 TRAFFIC SIGNAL DESIGN HANDBOOK.
9. PENNDOT PUBLICATION 236 HANDBOOK OF APPROVED SIGNS.

IMMEDIATELY UPON COMPLETION OF THE WORK, REMOVE THE DEVICES. THE DEPARTMENT WILL REMOVE ANY TRAFFIC CONTROL DEVICES ERECTED BY DEPARTMENT FORCES.

COVER OR REMOVE ALL SIGNS NOT IN USE.

THE DISTRICT CONSTRUCTION ENGINEER OR REPRESENTATIVE WILL INSPECT ALL TRAFFIC CONTROL DEVICES PRIOR TO START OF WORK.

MAINTAIN ALL OFFICIAL EXISTING ROADWAY SIGNS.

THIS TRAFFIC CONTROL PLAN DOES NOT RELIEVE THE CONTRACTOR OF HIS RESPONSIBILITY AS SPECIFIED IN SECTION 901.3A OF PUBLICATION 408/2020.

PROTECT ALL DROP-OFF CONDITIONS IN ACCORDANCE WITH PUBLICATION 408/2020 901.3(J).

ALL TRAFFIC CONTROL DEVICES SHALL BE NEW CONDITION AND MAINTAINED AS SUCH.

ALL WARNING SIGNS FOR THE PROJECT ARE TO BE OF TYPE III FLUORESCENT OR TYPE VII FLOURESCENT SHEETING. LOCATIONS OF ALL SIGNS ARE TO MEET CURRENT STANDARDS FOR OFFSET, MOUNTING HEIGHT AND BE PROPERLY BALLASTED.

REMOVE CONFLICTING PAVEMENT MARKINGS IN AN ACCEPTABLE MANNER THAT IS LEAST DAMAGING TO THE EXISTING PAVEMENT.

REINSTALL OR REPLACE SIGNS REMOVED OR DAMAGED DURING CONSTRUCTION OPERATIONS IMMEDIATELY AS INDICATED OR INSTRUCTED.

INVENTORY AND DOCUMENT ALL EXISTING SIGNS AND PAVEMENT MARKING PATTERNS PRIOR TO BEGINNING OF CONSTRUCTION WITH THE PROJECT ENGINEER.

DO NOT LEAVE EQUIPMENT, VEHICLES, OR MATERIAL ALONG ROADWAY. THEY ALL MUST BE OUTSIDE OF ROADWAY AREA IN A SUITABLY PROTECTED AREA.

ALL POST MOUNTED SIGNS MUST BE MOUNTED ON BREAKAWAY STEEL POSTS AS SPECIFIED IN SECTION 1103.08 OF PUBLICATION 408/2020.

INSTALL TRAFFIC CONTROL SIGNS IN ACCORDANCE WITH THE TRAFFIC CONTROL PLANS AS OUTLINED. FOR SHORT TERM FLAGGING OPERATIONS, INSTALL TRAFFIC CONTROL SIGNS IN ACCORDANCE WITH PUBLICATION 213, PATA 107.

FLAGGING IN ACCORDANCE WITH PUBLICATION 213, PATA FIGURES, WILL BE REQUIRED AS NECESSARY TO PERFORM SHORT TERM CONSTRUCTION OPERATIONS, AS APPLICABLE.

SIGN EACH INDIVIDUAL FLAGGING OPERATION.

FLAGGERS ARE TO BE EQUIPPED WITH RADIO.

TWO (2) WEEKS PRIOR TO IMPLEMENTING TRAFFIC PATTERN CHANGES CONTACTOR MUST CONTACT: EMERGENCY SERVICES (POLICE, FIRE, MEDICAL, ETC.), LOCAL BUSINESSES, LOCAL MUNICIPALITIES, COUNTY MAINTENANCE, SCHOOL DISTRICT, POSTED AND BONDED ROADS COORDINATOR AND COORDINATE A PRESS RELEASE WITH PENNDOT COMMUNITY RELATIONS COORDINATOR PRIOR TO THE START OF WORK AND/OR START OF A NEW CONSTRUCTION PHASE.

GENERAL NOTES, CONTINUED

NOTIFY THE DISTRICT CONSTRUCTION UNIT/PERMITS ENGINEER, IN WRITING (FORM M-937R) (BRIDGE/ROUTE RESTRICTION), AT LEAST 14 DAYS (EXCLUDING WEEKENDS AND HOLIDAYS) BEFORE IMPLEMENTING, CHANGING OR EXTENDING ANY RESTRICTION OR CLOSURE. NOTIFY THE DISTRICT CONSTRUCTION UNIT, IN WRITING (FORM M-937RO) (ROUTE/BRIDGE RESTRICTION OPENING), AT LEAST 7 DAYS (EXCLUDING WEEKENDS AND HOLIDAYS) BEFORE REMOVING ANY RESTRICTION OR CLOSURE.

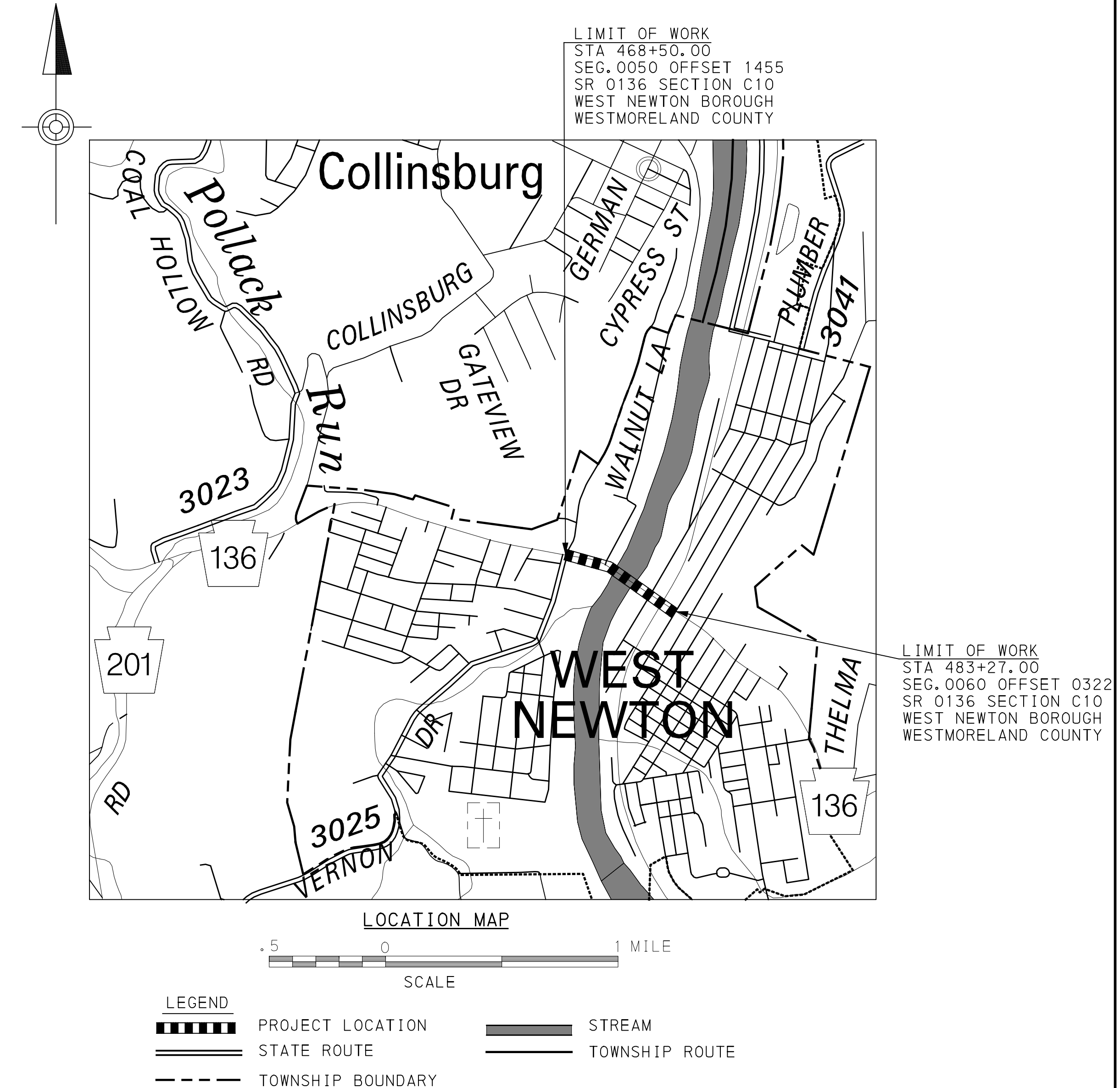
MAINTAIN ACCESS TO ALL SIDE ROADS AND PRIVATE DRIVEWAYS AT ALL TIMES.

PROVIDE A SUFFICIENT QUANTITY OF TYPE III BARRICADES.

DISTRICT	COUNTY	ROUTE	SECTION	SHEET
12-0	WESTMORELAND	0136	C10	1 OF 80
WEST NEWTON BRIDGE				
REVISION NUMBER	REVISIONS			DATE BY

SHEET INDEX

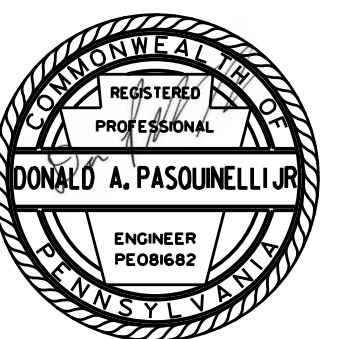
DESCRIPTION	SHEET
GENERAL NOTES AND LOCATION MAP	1
CONSTRUCTION SEQUENCE AND SUMMARY OF PROJECT COORDINATES (FOR TEMPORARY ALIGNMENT)	2
TABULATION SHEETS	3 TO 5
SIGN TABULATION SHEETS	6
TYPICAL SECTIONS AND DETAILS	7 TO 19
TEMPORARY BRIDGE PLAN SHEETS	20 TO 21
TRAFFIC CONTROL PLAN SHEETS (PHASES 3-7 & 9-13)	22 TO 43
DETOUR PLAN SHEETS	44 TO 48
PEDESTRIAN DETOUR PLAN SHEETS	49 TO 50
TEMPORARY TRAFFIC SIGNAL PLAN SHEETS	51 TO 53
PROFILES	54 TO 56
CROSS SECTIONS	57 TO 80



RECOMMENDED March 9, 2026

Donal A. Pasounelli Jr.
DISTRICT TRAFFIC ENGINEER

TRAFFIC CONTROL PLAN



CONSTRUCTION SEQUENCE

DISTRICT	COUNTY	ROUTE	SECTION	SHEET	
12-0	WESTMORELAND	0136	C10	2 OF 80	
WEST NEWTON BRIDGE					
REVISION NUMBER	REVISIONS			DATE	BY

ROADWAY CONSTRUCTION

- PHASE 1 INSTALL RCE AND ALL OTHER APPLICABLE E&S MEASURES AS PER THE E&SPC PLANS. INSTALL ACCESS TO BUILD STAGE 1 CAUSEWAY AND EAST TEMPORARY PIER AND EAST TEMPORARY ABUTMENT. REMOVE STAGE 1 CAUSEWAY. (SEE ATON PLAN FOR CAUSEWAY LAYOUT).
- PHASE 2 INSTALL APPLICABLE E&S MEASURES AS PER THE E&SPC PLANS. INSTALL ACCESS TO BUILD STAGE 2 CAUSEWAY AND WEST TEMPORARY PIER AND WEST TEMPORARY ABUTMENT. REMOVE PORTION OF STAGE 2 CAUSEWAY TO GET TO STAGE 4 CAUSEWAY LAYOUT. PERFORM MILL AND OVERLAY OPERATIONS OF THE WATER STREET DETOUR ROUTE AS SHOWN ON SHEET 45 OF 80. UTILIZE SHORT TERM FLAGGING OPERATIONS AS NEEDED.
- PHASE 3 BUILD SECTIONS OF TEMPORARY BRIDGE ON WATER STREET WORK AREA AND LAUNCH FROM EAST ABUTMENT. CONTINUE UNTIL ALL SPANS ARE BUILT AND IN PLACE. PERFORM MINE GROUTING OPERATIONS ON THE WEST SIDE OF THE TEMPORARY BRIDGE IN ACCORDANCE WITH THE MINE GROUTING PLAN. UTILIZE SHORT TERM FLAGGING OPERATIONS AS NEEDED.
- PHASE 4 IMPLEMENT DETOUR OF WATER STREET AS SHOWN ON SHEET 45 OF 80. UTILIZE SHORT TERM LANE CLOSURE WITH FLAGGERS IN ACCORDANCE WITH PATA 109 AND AS SHOWN PLAN SHEETS FOR PHASE 3 & 4. INSTALL TEMPORARY DRAINAGE AND COMPLETE EAST APPROACH OF TEMPORARY BRIDGE AT WATER STREET. REMOVE SIDEWALKS ALONG WATER STREET AND AT SR 0136 AND WATER STREET INTERSECTION AS SHOWN ON SHEETS 22 OF 80 AND PLACE TEMPORARY PAVEMENT AS SHOWN IN TEMPORARY SIDE WALK DETAIL. CONSTRUCT TEMPORARY ADA RAMPS, TEMPORARY CROSSWALK PAVEMENT MARKINGS, AND ASSOCIATED SIGNAGE. INSTALL POLES FOR THE TEMPORARY TRAFFIC SIGNALS AND ESTABLISH THE TEMPORARY PEDESTRIAN DETOUR TO BE IMPLEMENTED IN PHASE 7. RESTORE FULL ACCESS TO WATER STREET.
- PHASE 5 CLOSE AND DETOUR COLLINSBURG ROAD AS SHOWN ON SHEET 46 OF 80, BUILD TEMPORARY COLLINSBURG AND TEMPORARY SR 0136 TO THE EXTENT THAT SR 0136 TRAFFIC CAN BE MAINTAINED WITH TWO LANES AND GAP TRAIL MAINTAINED AT CURRENT ELEVATIONS. ONCE COLLINSBURG IS CONSTRUCTED TO GRADE WITH TEMPORARY BRIDGE, ALLOW COLLINSBURG TRAFFIC TO USE TEMPORARY BRIDGE. COMPLETE WORK DESCRIBED IN PHASE 4 PRIOR TO PLACING COLLINSBURG TRAFFIC ONTO TEMPORARY BRIDGE.
- PHASES 6 AND 7 DESCRIBED BELOW TO BE COMPLETED THROUGH A WEEKEND PERIOD COMMENCING NO SOONER THEN FRIDAY AT 9:00 PM AND COMPLETED BY THE FOLLOWING MONDAY AT 6:00 AM.
- PHASE 6 COMMENCE CONSTRUCTION OF WESTERN APPROACH TO TEMPORARY BRIDGE. CLOSE GAP TRAIL AND MAINTAIN ONE LANE OF TWO DIRECTIONAL ALTERNATING TRAFFIC ON THE SOUTHERN PORTION OF SR 0136. UTILIZE SHORT TERM LANE CLOSURE WITH FLAGGERS IN ACCORDANCE WITH PATA 109 AND AS SHOWN IN PLAN SHEETS. CONSTRUCT NORTHERN PORTION OF SR 0136 TO TEMPORARY ELEVATIONS TO ACCOMMODATE TWO LANES OF TRAFFIC IN PHASE 7. CONSTRUCT NORTHERN PORTION OF GAP TRAIL TO TEMPORARY ELEVATIONS. INSTALL TEMPORARY TRAFFIC SIGNAL EQUIPMENT IN ACCORDANCE WITH TEMPORARY TRAFFIC SIGNAL PLAN AS SHOWN ON SHEETS 51 TO 53 OF 80 FOR USE IN PHASE 7 UTILIZING SHORT TERM FLAGGING AS NECESSARY.
- PHASE 7 CLOSE THE EXISTING SR 0136 BRIDGE. ACTIVATE TEMPORARY TRAFFIC SIGNAL. MAINTAIN USE OF TEMPORARY TRAFFIC SIGNAL THROUGH PHASE 10. IMPLEMENT SR 0136 EB & WB DETOUR AS SHOWN ON SHEET 47 OF 80 AND PEDESTRIAN DETOUR AS SHOWN ON PEDESTRIAN DETOUR PLAN SHEETS. DEACTIVATE TRAFFIC SIGNAL AT INTERSECTION OF SR 0136 AND SECOND STREET. BAG ALL VEHICULAR AND PEDESTRIAN SIGNAL INDICATIONS. INSTALL STOP SIGN, TURN RESTRICTION AND PEDESTRIAN RESTRICTION SIGNS AS SHOWN ON THE PLANS. MAINTAIN CLOSURE OF GAP TRAIL AND MAINTAIN TWO LANES OF TRAFFIC ON THE SR 0136 TEMPORARY BRIDGE. CONSTRUCT REMAINING SOUTHERN PORTION SR 0136 AND GAP TRAIL TO TEMPORARY ELEVATIONS.
- PHASE 8 RESTORE ACCESS TO GAP TRAIL. OPEN TWO LANES OF TRAFFIC ON TEMPORARY ALIGNMENT, BEGIN REHABILITATION WORK ON SPAN 1 OF WEST NEWTON BRIDGE. UPON COMPLETION OF SPAN 1 REHABILITATION WORK, REMOVE STAGE 4 CAUSEWAY. REFER TO ATON PLAN FOR CAUSEWAY LAYOUT.
- PHASE 8A BEGIN REHABILITATION WORK ON SPAN 2 FROM TOP SIDE OF WEST NEWTON BRIDGE. REFER TO STAGE 5 OF ATON PLAN.
- PHASE 8B UPON COMPLETION OF SPAN 2 REHABILITATION WORK SET UP STAGE 6 OF ATON PLAN AND BEGIN REHABILITATION WORK ON SPAN 3 FROM TOP SIDE OF WEST NEWTON BRIDGE.
- PHASE 9 INSTALL APPROACH SLABS AND PERFORM OTHER APPROACH WORK INCLUDING DRAINAGE AND ROADWAY WORK THAT CAN BE COMPLETED WITHIN THE WORK AREA THAT DOESN'T IMPACT SR 0136 TRAFFIC.
- PHASE 10 COMMENCE CONSTRUCTION OF WESTERN APPROACH TO BRIDGE. CLOSE GAP TRAIL AND MAINTAIN ONE LANE OF TWO DIRECTIONAL ALTERNATING TRAFFIC ON THE NORTHERN PORTION OF SR 0136. UTILIZE SHORT TERM LANE CLOSURE WITH FLAGGERS IN ACCORDANCE WITH PATA 109 AND AS SHOWN IN PLAN SHEETS. UTILIZE HALF WIDTH CONSTRUCTION OPERATIONS AND INSTALL INLETS, DRAINAGE CROSS PIPES AND CONSTRUCT SOUTHERN SIDE OF SR 0136 AND SOUTHERN END OF GAP TRAIL TO FINAL ELEVATIONS. CONSTRUCT SWITCHBACK RAMP.
- PHASE 11 RESTORE SR 0136 TO FULL TRAFFIC AND DETOUR COLLINSBURG ROAD AS SHOWN ON SHEET 46 OF 80. REACTIVATE AND RESTORE FULL VEHICULAR AND PEDESTRIAN OPERATION TO TRAFFIC SIGNAL AT INTERSECTION OF SR 0136 AND SECOND STREET. REMOVE CONFLICTING TEMPORARY SIGNS AT INTERSECTION. CLOSE ACCESS TO TEMPORARY BRIDGE. MAINTAIN CLOSURE OF GAP TRAIL AND MAINTAIN ONE LANE OF TWO DIRECTIONAL ALTERNATING TRAFFIC ON THE SOUTHERN PORTION OF SR 0136. UTILIZE SHORT TERM LANE CLOSURE WITH FLAGGERS IN ACCORDANCE WITH PATA 109 AND AS SHOWN IN PLAN SHEETS. UTILIZE HALF WIDTH CONSTRUCTION OPERATIONS AND INSTALL INLETS, DRAINAGE CROSS PIPES AND CONSTRUCT NORTHERN SIDE OF SR 0136 AND NORTHERN END OF GAP TRAIL TO FINAL ELEVATIONS. INSTALL PERMANENT TRAFFIC SIGNAL AT INTERSECTION OF SR 0136 AND WATER STREET IN ACCORDANCE WITH THE APPROVED TRAFFIC SIGNAL PLAN UTILIZING SHORT TERM FLAGGING AS NECESSARY. BAG PROPOSED SIGNAL HEADS AND MAINTAIN OPERATION OF EXISTING TRAFFIC SIGNAL. ENSURE THAT PROPOSED SIGNAL EQUIPMENT DOES NOT OBSCURE THE EXISTING TRAFFIC SIGNAL INDICATIONS.
- PHASE 12 RESTORE ACCESS TO GAP TRAIL. ACTIVATE NEWLY INSTALLED TRAFFIC SIGNAL AT SR 0136 AND WATER STREET. REMOVE EXISTING TRAFFIC SIGNAL AND ALL APPURTENANCES UTILIZING SHORT TERM LANE CLOSURES WITH FLAGGERS AS NECESSARY. CONSTRUCT COLLINSBURG ROAD TO FINAL ELEVATION TO TIE INTO SR 0136. RESTORE FULL ACCESS TO COLLINSBURG ROAD REESTABLISH DETOUR OF WATER STREET AS SHOWN ON SHEET 45 OF 80 TO REMOVE TEMPORARY PAVEMENT ALONG WATER STREET. UTILIZE FLAGGING TO INSTALL INLETS AND LATERAL DRAINAGE PIPES ALONG SR 0136 EAST OF WATER STREET AND ALONG WATER STREET. CONSTRUCT CURBING, ADA RAMPS, SIDEWALKS, AND FULL DEPTH PAVEMENT RECONSTRUCTION WITHIN THE WORK AREA SHOWN ON THE PLANS ALONG SR 0136 BETWEEN WATER STREET AND 2ND STREET. MAINTAIN ALL REQUIRED DROP OFF REQUIREMENTS DURING NON-WORKING HOURS. PERFORM FULL DEPTH TIES BETWEEN SR 0136 AND WATER STREET UTILIZING NIGHT-TIME OPERATIONS AND SHORT TERM FLAGGING AS NECESSARY. MAINTAIN AT LEAST A SINGLE LANE ACCESS AT ALL TIMES TO BOTH WATER STREET APPROACHES TO MAIN STREET. AT COMPLETION OF PHASE, RESTORE FULL ACCESS TO WATER STREET.
- PHASE 13 PERFORM ALL FINAL MILLING AND TIE-INS AND PLACE ALL WEARING COURSES. COMPLETE ALL FINAL SIGNING AND PAVEMENT MARKINGS AND FINAL SEEDING. ENSURE ALL TEMPORARY PAVEMENT MARKINGS HAVE BEEN REMOVED.

TEMPORARY BRIDGE REMOVAL

- PHASE 1 IMPLEMENT DETOUR OF WATER STREET AS SHOWN ON SHEET 45 OF 80. BEGIN REMOVAL OF TEMPORARY BRIDGE SUPERSTRUCTURE. PORTIONS OF EAST APPROACH ROADWAY WILL NEED REMOVED AND REGRADED TO ALLOW FOR REMOVAL.
- PHASE 2 INSTALL ACCESS ROAD AND STAGE 7 CAUSEWAY AND REMOVE WEST TEMP PIER AND WEST TEMPORARY ABUTMENT. REMOVE STAGE 6 CAUSEWAY. REGRADE AND PAVE PARCEL 9 AS SHOWN IN THE CONSTRUCTION DRAWINGS.
- PHASE 3 INSTALL ACCESS ROAD AND STAGE 8 CAUSEWAY AND REMOVE EAST TEMPORARY PIER AND EAST TEMPORARY ABUTMENT. REMOVE STAGE 8 CAUSEWAY. REGRADE PARCEL 18 BACK TO ORIGINAL CONDITIONS.

SUMMARY OF PROJECT COORDINATES* PENNSYLVANIA STATE PLANE COORDINATE SYSTEM (SPCS 83) PA-SOUTH ZONE

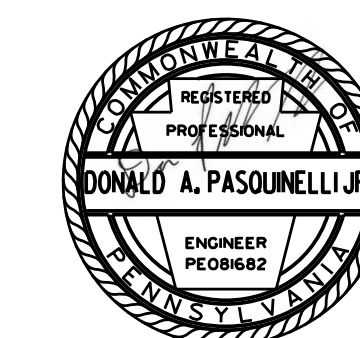
RTE.	STATION	POINT	COORDINATES		BEARING
			NORTH	EAST	
TEMPORARY BRIDGE CONSTR	10+00.00	POB	326382.9551	1404115.2180	S 79°44'26" E
	10+11.71	PC	366380.8688	1404126.7447	
	10+63.12	PI	326371.7135	1404177.3269	
	11+14.40	PT	326356.6521	1404226.4749	S 72°57'44" E
	11+52.26	PC	326345.5590	1404262.6735	
	12+54.49	PI	326315.6064	1404360.4143	S 86°23'47" E
	13+55.78	PT	326309.1809	1404462.4395	
	19+07.21	PC	326274.5208	1405012.7774	
	19+45.59	PI	326272.1084	1405051.0816	
	19+82.38	PT	326251.6986	1405083.5851	S 57°52'27" E
19+99.71	POE	326242.4795	1405098.2668		

RTE.	STATION	POINT	COORDINATES		BEARING
			NORTH	EAST	
TEMP COLLINSBURG RD CONSTR	50+00.00	POB	326287.1116	1404394.9068	N 26°07'03" E
	50+32.78	PC	326316.5485	1404409.3388	
	50+97.89	PI	326375.0089	1404438.0004	N 29°22'28" E
	51+62.97	PT	326431.7464	1404469.9371	
	52+67.02	POE	326522.4180	1404520.9750	

RTE.	STATION	POINT	COORDINATES		BEARING
			NORTH	EAST	
GAP TRAIL CONSTR	30+00.00	POB	326209.8732	1404330.1230	N 20°43'01" E
	30+78.53	PI	326283.3278	1404357.9040	N 24°16'46" E
	31+66.47	PI	326363.4896	1404394.0636	N 20°20'16" E
	32+40.54	POE	326432.9416	1404419.8067	

NOTE: FOUR (4) PLACE COORDINATES ARE USED FOR COMPUTATIONAL PURPOSES ONLY AND DO NOT IMPLY A PRECISION BEYOND TWO (2) PLACES.

* THE BASELINE COORDINATE TABLES PRESENTED ON THIS SHEET ARE INTENDED FOR CONSTRUCTION OF TEMPORARY PAVEMENT ALIGNMENTS. REFER TO CONSTRUCTION PLANS FOR SUMMARY OF PROJECT COORDINATES FOR FINAL CONSTRUCTION BASELINES.



DISTRICT	COUNTY	ROUTE	SECTION	SHEET
12-0	WESTMORELAND	0136	C10	28 OF 80
WEST NEWTON BRIDGE				
REVISION NUMBER	REVISIONS			DATE BY

LEGEND

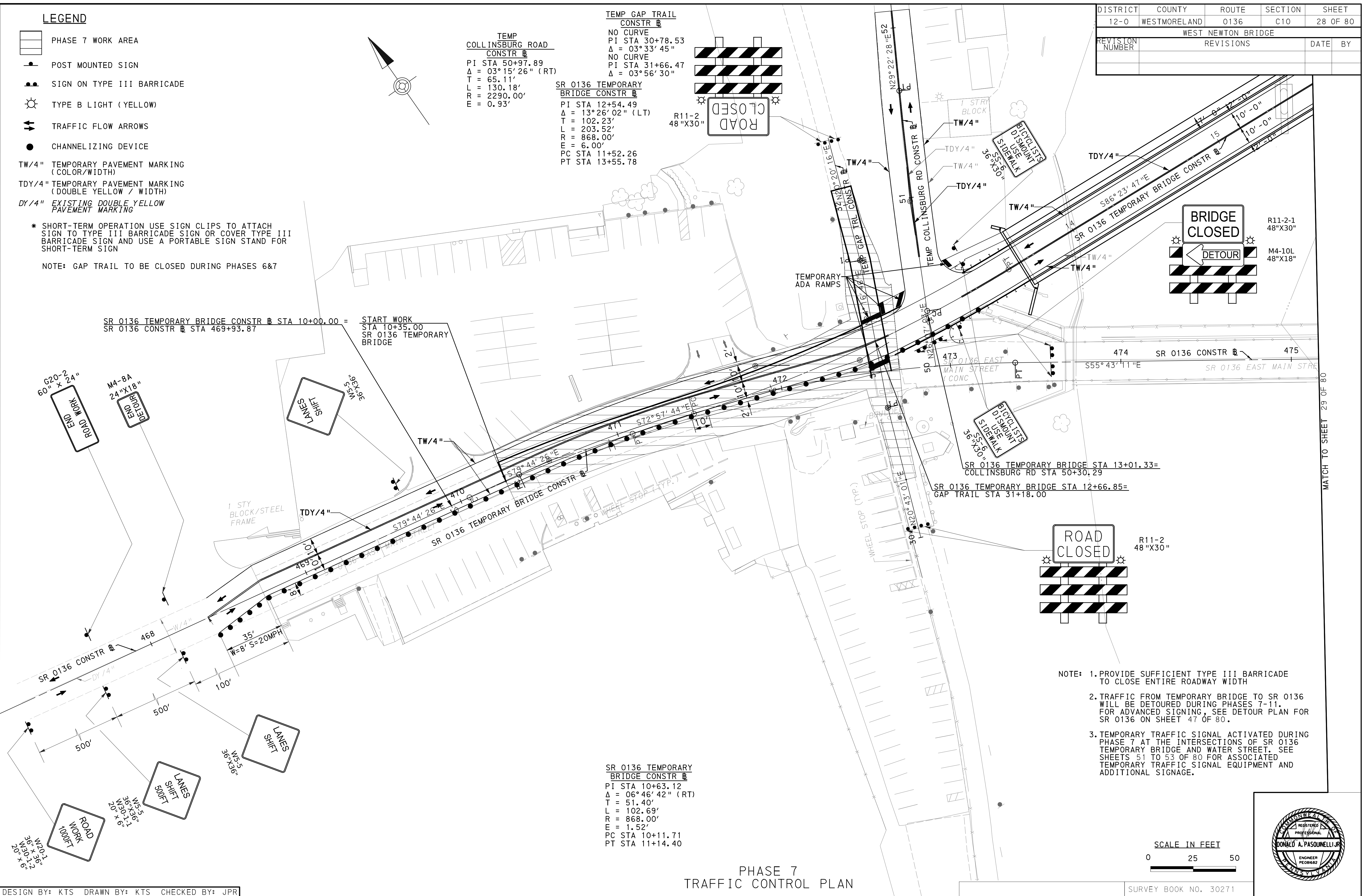
- PHASE 7 WORK AREA
- POST MOUNTED SIGN
- SIGN ON TYPE III BARRICADE
- TYPE B LIGHT (YELLOW)
- TRAFFIC FLOW ARROWS
- CHANNELIZING DEVICE
- TW/4" TEMPORARY PAVEMENT MARKING (COLOR/WIDTH)
- TDY/4" TEMPORARY PAVEMENT MARKING (DOUBLE YELLOW / WIDTH)
- DY/4" EXISTING DOUBLE YELLOW PAVEMENT MARKING

* SHORT-TERM OPERATION USE SIGN CLIPS TO ATTACH SIGN TO TYPE III BARRICADE SIGN OR COVER TYPE III BARRICADE SIGN AND USE A PORTABLE SIGN STAND FOR SHORT-TERM SIGN

NOTE: GAP TRAIL TO BE CLOSED DURING PHASES 6&7

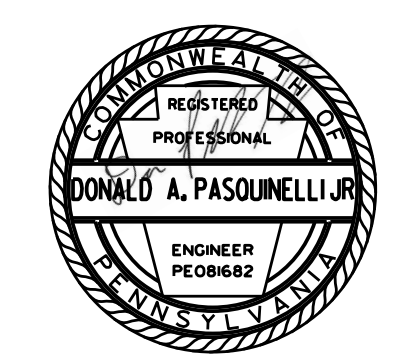
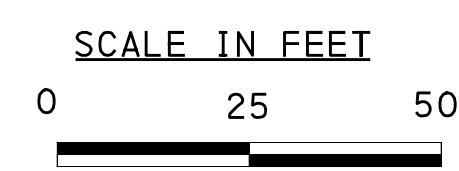
TEMP COLLINSBURG ROAD CONSTR
 NO CURVE
 PI STA 50+97.89
 $\Delta = 03^{\circ}15'26"$ (RT)
 T = 65.11'
 L = 130.18'
 R = 2290.00'
 E = 0.93'

SR 0136 TEMPORARY BRIDGE CONSTR
 PI STA 12+54.49
 $\Delta = 13^{\circ}26'02"$ (LT)
 T = 102.23'
 L = 203.52'
 R = 868.00'
 E = 6.00'
 PC STA 11+52.26
 PT STA 13+55.78



- NOTE: 1. PROVIDE SUFFICIENT TYPE III BARRICADE TO CLOSE ENTIRE ROADWAY WIDTH
2. TRAFFIC FROM TEMPORARY BRIDGE TO SR 0136 WILL BE DETOURED DURING PHASES 7-11. FOR ADVANCED SIGNING, SEE DETOUR PLAN FOR SR 0136 ON SHEET 47 OF 80.
3. TEMPORARY TRAFFIC SIGNAL ACTIVATED DURING PHASE 7 AT THE INTERSECTIONS OF SR 0136 TEMPORARY BRIDGE AND WATER STREET. SEE SHEETS 51 TO 53 OF 80 FOR ASSOCIATED TEMPORARY TRAFFIC SIGNAL EQUIPMENT AND ADDITIONAL SIGNAGE.

SR 0136 TEMPORARY BRIDGE CONSTR
 PI STA 10+63.12
 $\Delta = 06^{\circ}46'42"$ (RT)
 T = 51.40'
 L = 102.69'
 R = 868.00'
 E = 1.52'
 PC STA 10+11.71
 PT STA 11+14.40



PHASE 7 TRAFFIC CONTROL PLAN

DESIGN BY: KTS DRAWN BY: KTS CHECKED BY: JPR

SURVEY BOOK NO. 30271

2/17/2026
 OPERATOR: \$USER\$
 pw://hq-pv/in/01. a-e. transyscorp.com transyscorp-pw/ Documents/Projects/2023/PTT05 - P111sburgh/PT05230029 - WEST NEWTON BRIDGE/0136 - Road/303.01 - Standard Sheets/MPT/SR_0136_MPT_P1101

MATCH TO SHEET 29 OF 80

DISTRICT	COUNTY	ROUTE	SECTION	SHEET
12-0	WESTMORELAND	0136	C10	29 OF 80

WEST NEWTON BRIDGE			
REVISION NUMBER	REVISIONS	DATE	BY

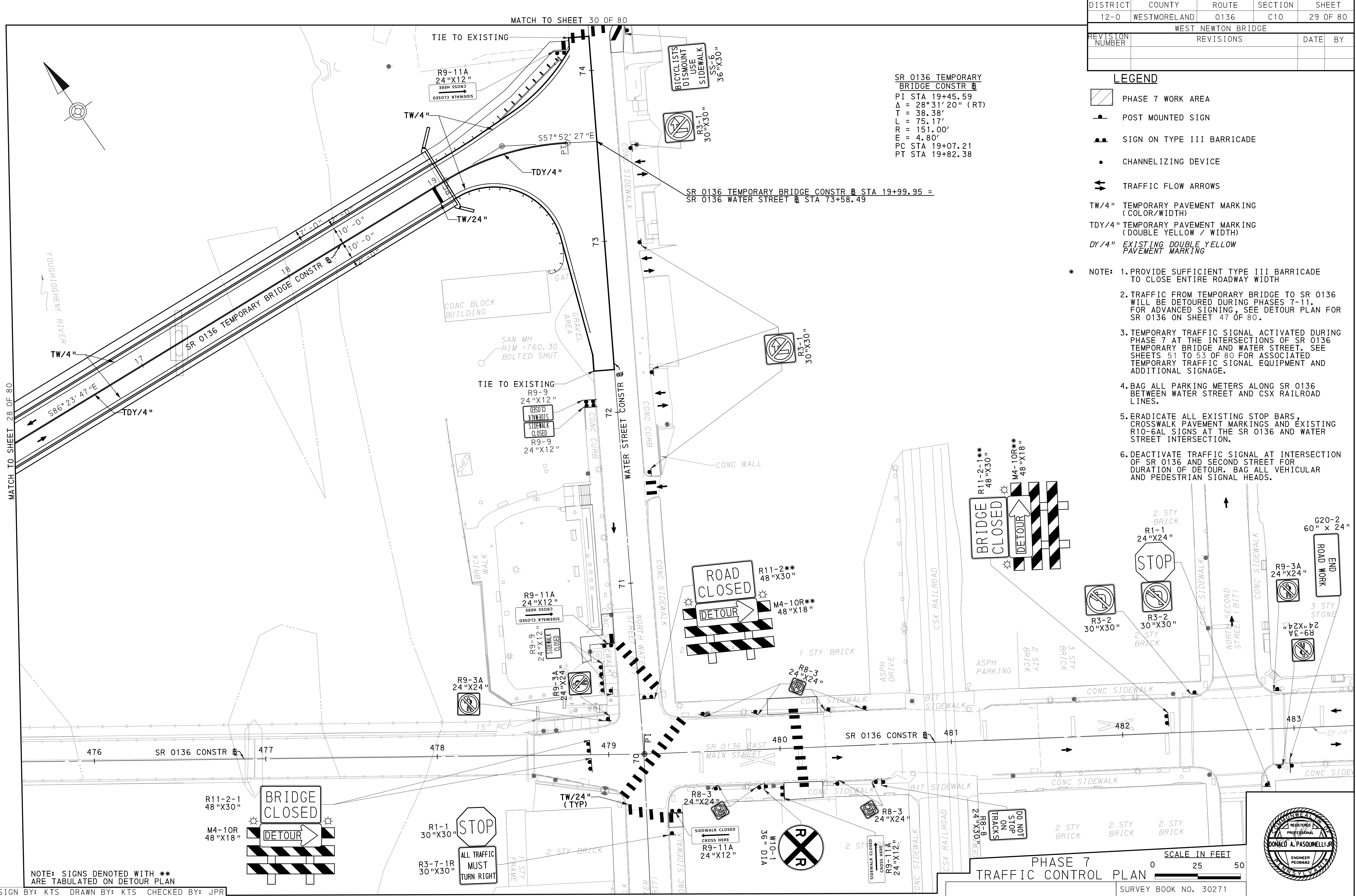
LEGEND

- PHASE 7 WORK AREA
- POST MOUNTED SIGN
- SIGN ON TYPE III BARRICADE
- CHANNELIZING DEVICE
- TRAFFIC FLOW ARROWS
- TW/4" TEMPORARY PAVEMENT MARKING (COLOR/WIDTH)
- TDY/4" TEMPORARY PAVEMENT MARKING (DOUBLE YELLOW / WIDTH)
- DY/4" EXISTING DOUBLE YELLOW PAVEMENT MARKING

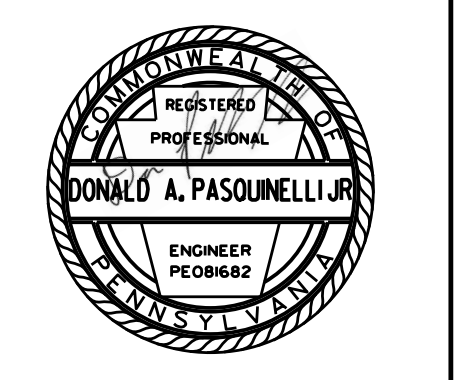
- * NOTE: 1. PROVIDE SUFFICIENT TYPE III BARRICADE TO CLOSE ENTIRE ROADWAY WIDTH
2. TRAFFIC FROM TEMPORARY BRIDGE TO SR 0136 WILL BE DETOURED DURING PHASES 7-11. FOR ADVANCED SIGNING, SEE DETOUR PLAN FOR SR 0136 ON SHEET 47 OF 80.
3. TEMPORARY TRAFFIC SIGNAL ACTIVATED DURING PHASE 7 AT THE INTERSECTIONS OF SR 0136 TEMPORARY BRIDGE AND WATER STREET. SEE SHEETS 51 TO 53 OF 80 FOR ASSOCIATED TEMPORARY TRAFFIC SIGNAL EQUIPMENT AND ADDITIONAL SIGNAGE.
4. BAG ALL PARKING METERS ALONG SR 0136 BETWEEN WATER STREET AND CSX RAILROAD LINES.
5. ERADICATE ALL EXISTING STOP BARS, CROSSWALK PAVEMENT MARKINGS AND EXISTING R10-6AL SIGNS AT THE SR 0136 AND WATER STREET INTERSECTION.
6. DEACTIVATE TRAFFIC SIGNAL AT INTERSECTION OF SR 0136 AND SECOND STREET FOR DURATION OF DETOUR. BAG ALL VEHICULAR AND PEDESTRIAN SIGNAL HEADS.

SR 0136 TEMPORARY BRIDGE CONSTR
 PI STA 19+45.59
 $\Delta = 28^{\circ}31'20''$ (RT)
 T = 38.38'
 L = 75.17'
 R = 151.00'
 E = 4.80'
 PC STA 19+07.21
 PT STA 19+82.38

SR 0136 TEMPORARY BRIDGE CONSTR STA 19+99.95 =
 SR 0136 WATER STREET STA 73+58.49



PHASE 7
 TRAFFIC CONTROL PLAN
 SCALE IN FEET
 0 25 50



NOTE: SIGNS DENOTED WITH ** ARE TABULATED ON DETOUR PLAN

DESIGN BY: KTS DRAWN BY: KTS CHECKED BY: JPR

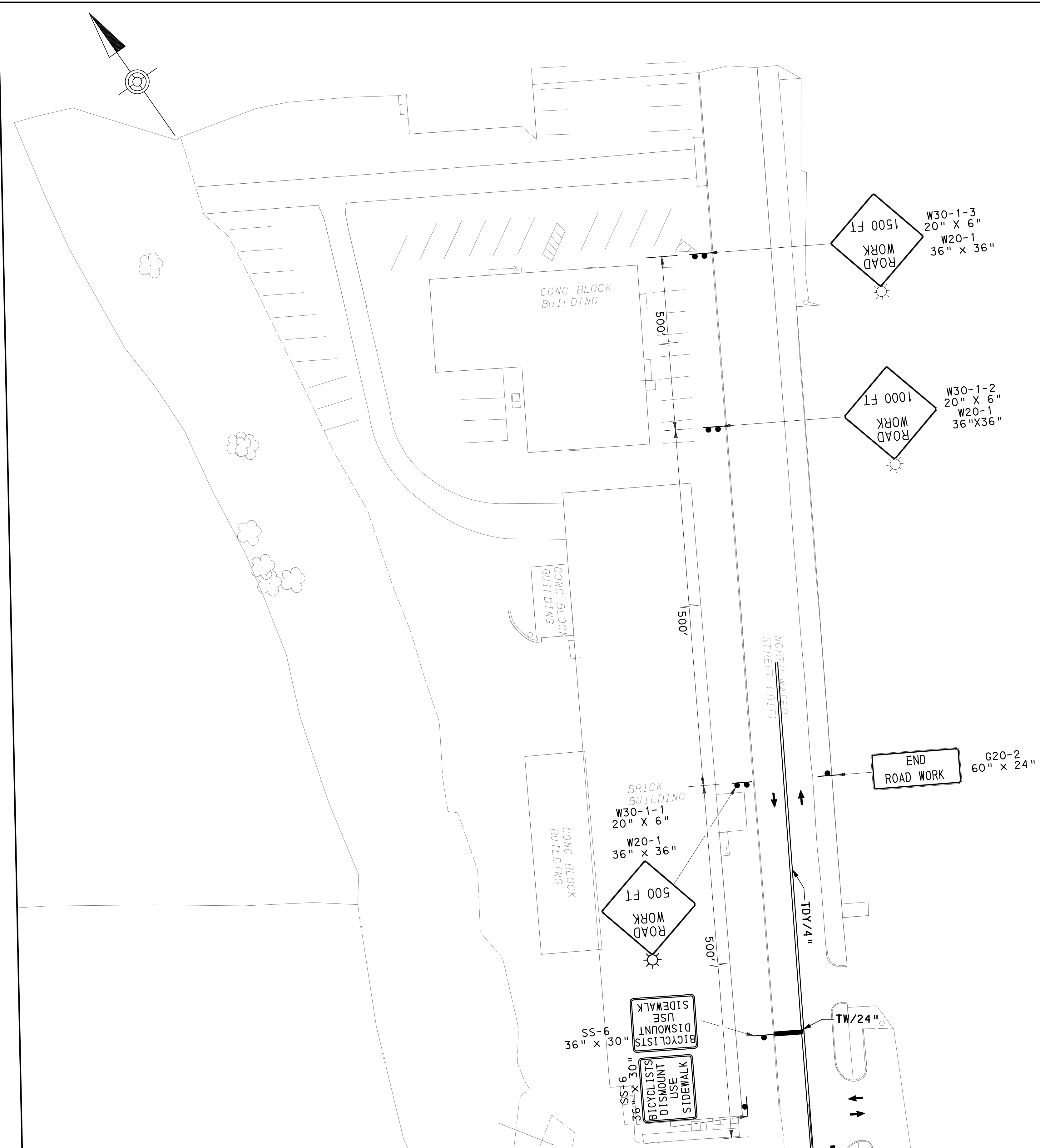
OPERATOR: \$USER\$
 2/3/2026
 pw: / / nq: pvt: / n: 01: a: e: Transyscorp: com: Transyscorp: pvt: / Documents: / Projects: 2023: / P1705 - WEST NEWTON: FD: 2023: 00 - Road: 2023: 01 - Standard: Sheets: / MPT: / SR: 0136: MPT: PH7: P: 1: 0: 2

DISTRICT	COUNTY	ROUTE	SECTION	SHEET
12-0	WESTMORELAND	0136	C10	30 OF 80
WEST NEWTON BRIDGE				
REVISION NUMBER	REVISIONS	DATE	BY	

NOTE: 1. PROVIDE SUFFICIENT TYPE III BARRICADE TO CLOSE ENTIRE ROADWAY WIDTH

2. TRAFFIC FROM TEMPORARY BRIDGE TO SR 0136 WILL BE DETOURED DURING PHASES 7-11. FOR ADVANCED SIGNING, SEE DETOUR PLAN FOR SR 0136 ON SHEET 47 OF 80.

3. TEMPORARY TRAFFIC SIGNAL ACTIVATED DURING PHASE 7 AT THE INTERSECTIONS OF SR 0136 TEMPORARY BRIDGE AND WATER STREET. SEE SHEETS 51 TO 53 OF 80 FOR ASSOCIATED TEMPORARY TRAFFIC SIGNAL EQUIPMENT AND ADDITIONAL SIGNAGE.

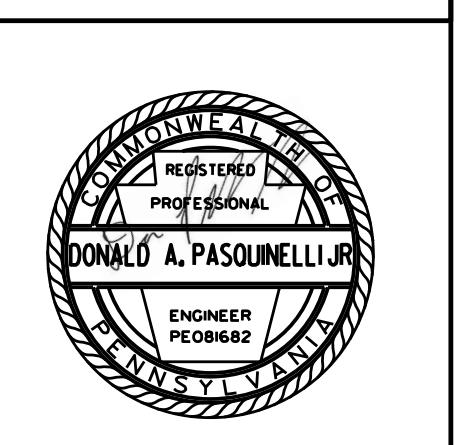


- LEGEND**
- WORK AREA
 - WORK AREA - PERFORM UNDER SHORT-TERM FLAGGING OPERATION (PATA 107)
 - POST MOUNTED SIGN
 - SIGN ON TYPE III BARRICADE
 - CHANNELIZING DEVICE
 - TRAFFIC FLOW ARROWS
 - TW/4" TEMPORARY PAVEMENT MARKING (COLOR/WIDTH)
 - TDY/4" TEMPORARY PAVEMENT MARKING (DOUBLE YELLOW / WIDTH)

* SHORT-TERM OPERATION USE SIGN CLIPS TO ATTACH SIGN TO TYPE III BARRICADE SIGN OR COVER TYPE III BARRICADE SIGN AND USE A PORTABLE SIGN STAND FOR SHORT-TERM SIGN.

MATCH TO SHEET 29 OF 80

PHASE 7
TRAFFIC CONTROL PLAN



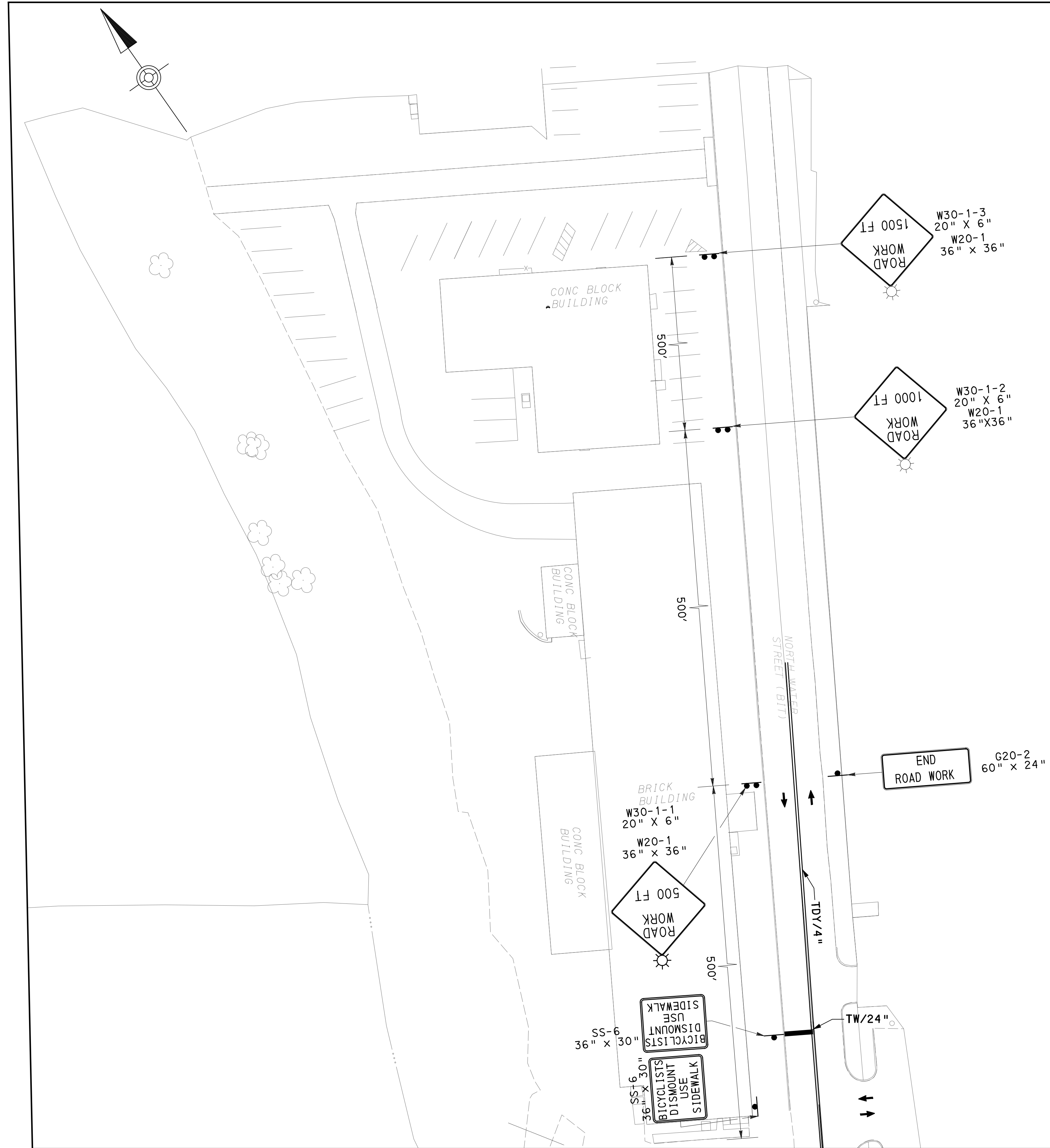
OPERATOR: \$USER\$ DATE: 2/3/2026 PROJECT: WEST NEWTON BRIDGE - PHASE 7 TRAFFIC CONTROL PLAN SHEET 30 OF 80

DESIGN BY: KTS DRAWN BY: KTS CHECKED BY: JPR

SURVEY BOOK NO. 30271

DISTRICT	COUNTY	ROUTE	SECTION	SHEET
12-0	WESTMORELAND	0136	C10	39 OF 80
WEST NEWTON BRIDGE				
REVISION NUMBER	REVISIONS	DATE	BY	

- NOTE: 1. PROVIDE SUFFICIENT TYPE III BARRICADE TO CLOSE ENTIRE ROADWAY WIDTH
2. TRAFFIC FROM TEMPORARY BRIDGE TO SR 0136 WILL BE DETOURED DURING PHASES 7-11. FOR ADVANCED SIGNING, SEE DETOUR PLAN FOR SR 0136 ON SHEET 47 OF 80.
3. TEMPORARY TRAFFIC SIGNAL ACTIVATED DURING PHASE 7 AT THE INTERSECTIONS OF SR 0136 TEMPORARY BRIDGE AND WATER STREET. SEE SHEETS 51 TO 53 OF 80 FOR ASSOCIATED TEMPORARY TRAFFIC SIGNAL EQUIPMENT AND ADDITIONAL SIGNAGE.

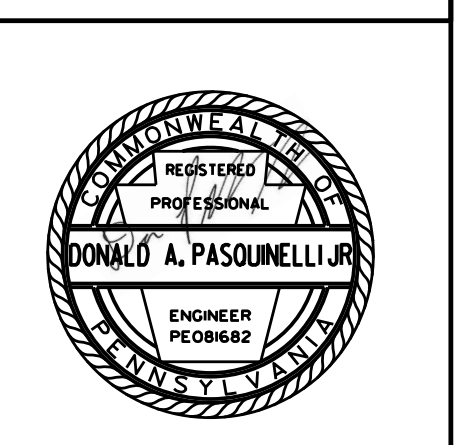


- LEGEND**
- WORK AREA
 - WORK AREA - PERFORM UNDER SHORT-TERM FLAGGING OPERATION (PATA 107)
 - POST MOUNTED SIGN
 - SIGN ON TYPE III BARRICADE
 - CHANNELIZING DEVICE
 - TRAFFIC FLOW ARROWS
 - TW/4" TEMPORARY PAVEMENT MARKING (COLOR/WIDTH)
 - TDY/4" TEMPORARY PAVEMENT MARKING (DOUBLE YELLOW / WIDTH)

* SHORT-TERM OPERATION USE SIGN CLIPS TO ATTACH SIGN TO TYPE III BARRICADE SIGN OR COVER TYPE III BARRICADE SIGN AND USE A PORTABLE SIGN STAND FOR SHORT-TERM SIGN.

MATCH TO SHEET 38 OF 80

PHASE 11
TRAFFIC CONTROL PLAN



SURVEY BOOK NO. 30271

OPERATOR: \$USER\$ FILE NAME: 2/3/2026