

PLAN PREPARATION

OWNER:
GIGAPOWER
P.O. BOX 179
EAST GREENVILLE, PA 18041

NICOLE ATHERHOLT
DIRECTOR OF NETWORK OPERATIONS
NICOLE.ATHERHOLT@GIGAPOWER.COM

RICH REHAK
OUTSIDE PLANT SUBJECT MATTER
EXPERT
RICH.REHAK@GIGAPOWER.COM

DANIEL STELMACK
CONSTRUCTION LEAD - PA
DANIEL.STELMACK@GIGAPOWER.COM
570-589-5533

ENGINEERING FIRM:
4200 CORNING PLACE
CHARLOTTE, NC 28216

EDWIN ROGERS
PROGRAM MANAGER
ROGERSE2@CORNING.COM

EDDIE LOWE
SENIOR OUTSIDE PLANT ENGINEER
LOWEED@CORNING.COM

PERMIT DRAWN BY:
CHRIS SLOCE
ENGINEER/TECH
SLOCEC3@CORNING.COM

PROJECT INFORMATION

MASTER PROJECT: GIGAPOWER - NEON-LIMA
PROJECT NAME: WB301-RT3-SEC4-HANL
CORNING PROJECT NUMBER: CORNING NUMBER P-#####
PPL APPLICATION NUMBER: NA

DISTRICT	COUNTY	BOROUGH	ROUTE	SEGMENT	OFFSET	TOTAL SHEETS
4	40	WILKES-BARRE	ROAD_NUMBER	0010	1186	11
	40	WILKES-BARRE	ROAD_NUMBER	0010	1340	

RIGHT-OF-WAY OCCUPANCY PERMIT

18 SCOTT ST
WILKES-BARRE, (LUZERNE), PENNSYLVANIA
FROM STA. N/A TO STA. N/A LENGTH 110' FT
DATE: 1/23/2026

CROSSING #361579U
RAILROAD SUBDIVISION: LEHIGH
RAILROAD DIVISION OR REGION: ATLANTIC
NEAREST RR TIMETABLE STATION: WILKES-BARRE
RR MILEPOST: 0176.43
MAXIMUM TIMETABLE SPEED: 25MPH

SHEET INDEX

001	COVER SHEET
002	NOTES
003	LEGEND
004	PLAN OVERVIEW
005	ELEVATION VIEW 1
006	ELEVATION VIEW 2

TYPICAL DETAILS

601	POLE BONDING & GROUNDING
602	RISERS
603	SUSPENSION CLAMPS DETAILS
604	DOWN GUY DETAILS
605	POLE SLACK DETAILS
606	CROSSING INVENTORY REPORT

LIST OF PUBLIC UTILITIES

WATER & WASTEWATER
PENNSYLVANIA AMERICAN WATER (800) 565-7292
LACKAWANNA RIVER BASIN SEWER AUTH (570) 489-7563
WYOMING VALLEY SANITARY AUTH (570) 825-3416

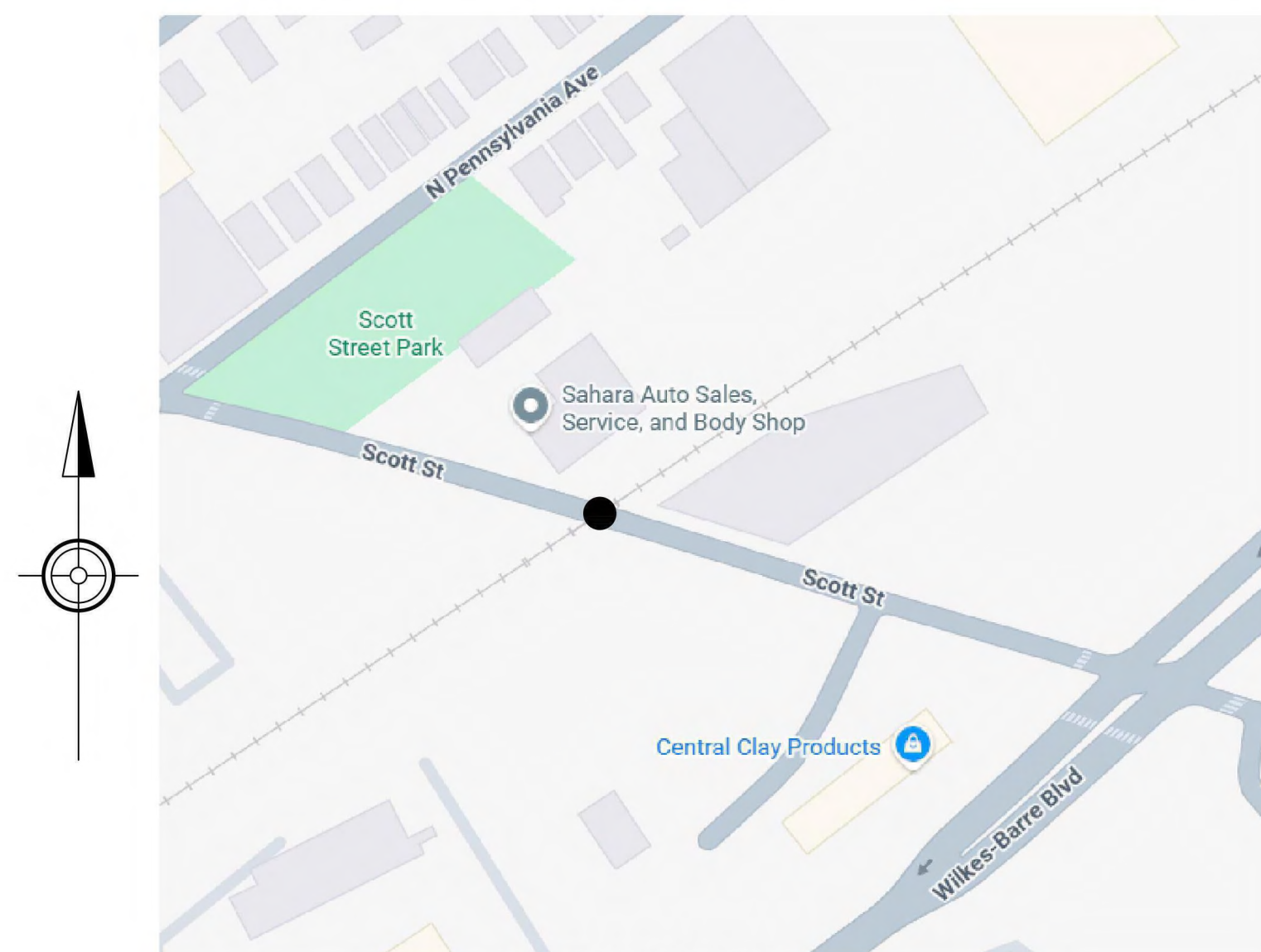
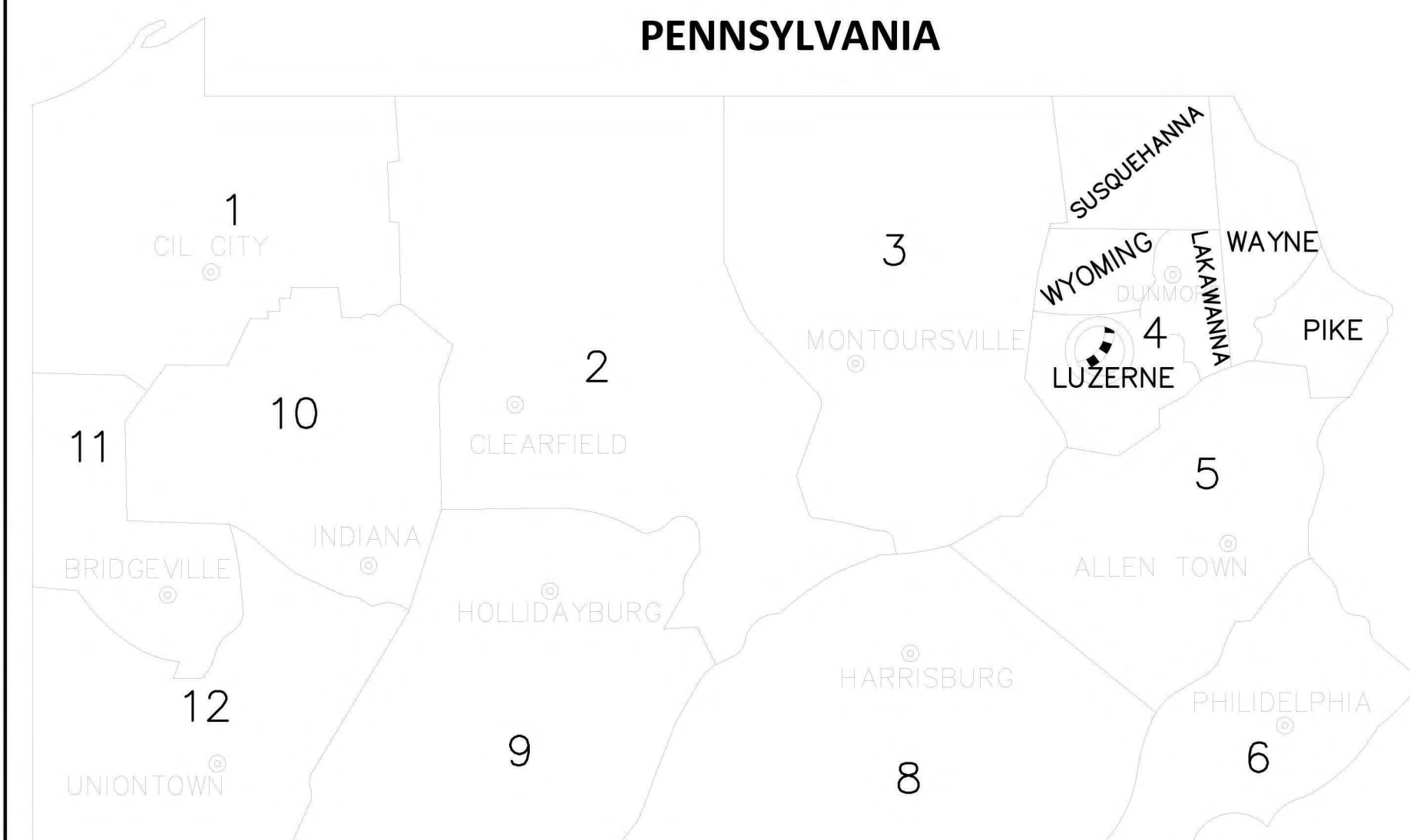
ELECTRICAL
PPL COMPANY (800) 342-5775
BLAKELY ELEC. (570) 383-3340
UGI UTILITIES (800) 276-2722

GAS
UGI UTILITIES (800) 276-2722

COMMUNICATIONS
COMCAST - DURYEA
FRONTIER
LOOP INTERNET
SERVICE ELECTRIC
VERIZON PENNSYLVANIA

MUNICIPALITIES (LACKAWANNA)
ARCHBALD (570) 876-1800
BLAKELY (570)-383-3340
DUNMORE (570) 343-7611
JESSUP (570) 489-0411
OLYPHANT (570) 489-2135
THROOP (570) 489-8311
ROADS & BRIDGES (570) 496-7733

MUNICIPALITIES (LUZERNE)
HANOVER TWP (570) 825-8522
KINGSTON (570) 288-4576
NANTICOKE (570) 735-2800
PITTSTON (570) 654-4601
SUGAR NOTCH (570) 822-9282
WILKES-BARRE (570) 208-4635
ROAD & BRIDGES (570) 825-1600



LOCATION MAP

- STATE HWY _____
- BOROUGH STREETS - - - - -
- WATER WAY _____
- PROJECT LIMITS - - - - -

CERTIFIED CORRECT PLANS

Dennis J. Mack
Professional Engineer
Approved by Bureau of Technical Utility Services

PA PUBLIC UTILITY COMMISSION

ATTEST *Matthew L. Hunsicker* 03/06/2026
Secretary Docket: A-2026-3060249



CALL BEFORE YOU DIG

PENNSYLVANIA LAW REQUIRES 3 TO 10 WORKING DAYS NOTICE FOR CONSTRUCTION PHASE BASED ON PROJECT COMPLEXITY AND 10 WORKING DAYS IN DESIGN STAGE - STOP CALL 1-800-242-1776

THE PA ONE CALL NOTIFICATIONS PERFORMED DURING PROJECT DEVELOPMENT ARE AS FOLLOWS:

PRELIMINARY DESIGN SERIAL NO.: N/A
ON: N/A
FOR: WB301-RT3-SEC4-HANL

PLOT DATE: 1/23/2026, ORIGINAL SIZE: ANSI D (34 X 22 INCHES)

DESIGN DESIGNATION
HIGHWAY CLASSIFICATION FREE ACCESS
DESIGN SPEED 25 MPH
PAVEMENT WIDTH 50'
SHOULDER WIDTH N/A'

LINES

UTILITIES

SYMBOLS

-PROPOSED

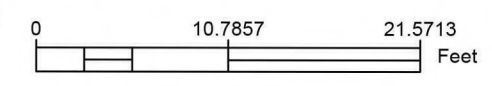
ABBREVIATIONS

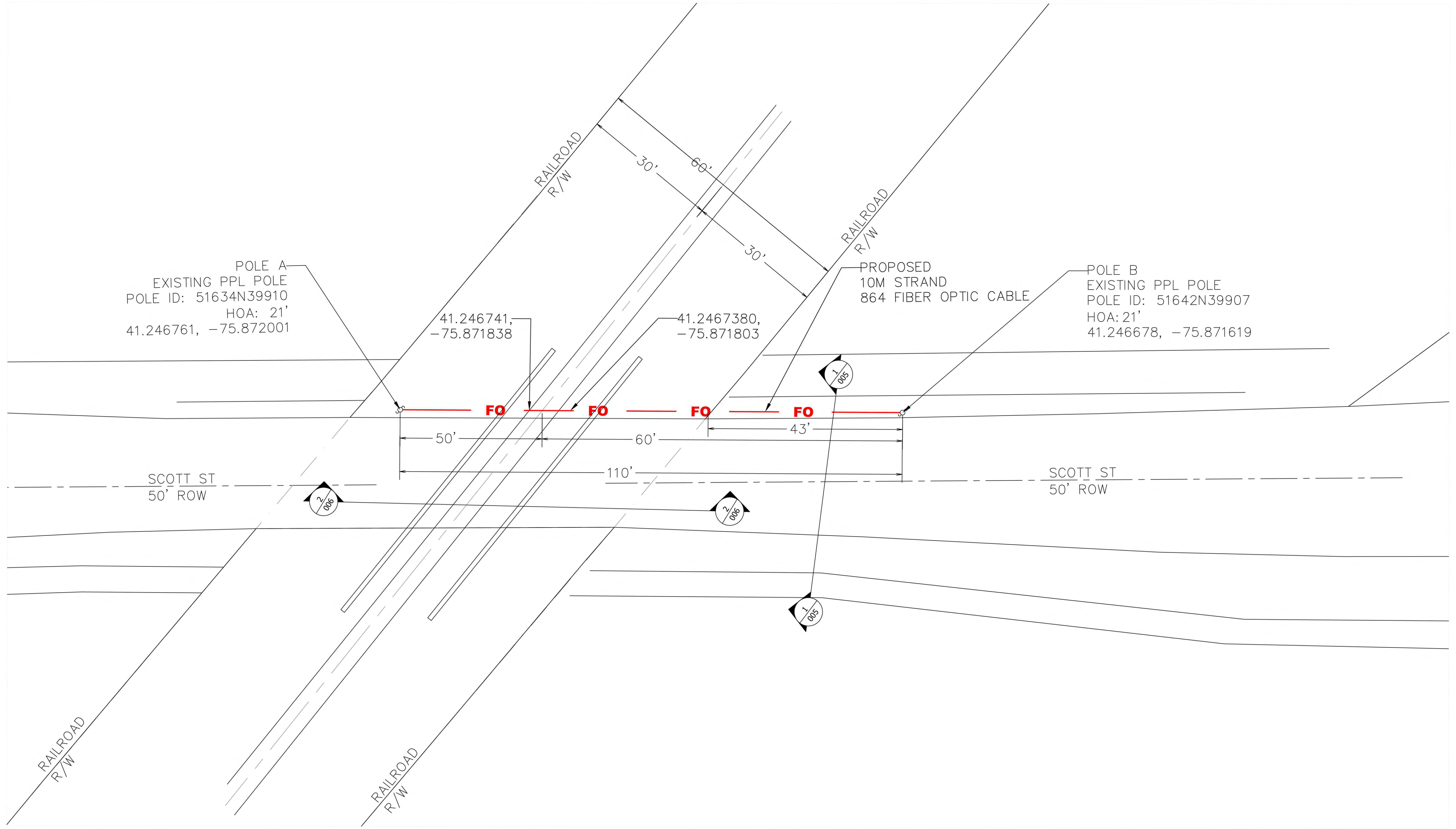
ABBREVIATIONS

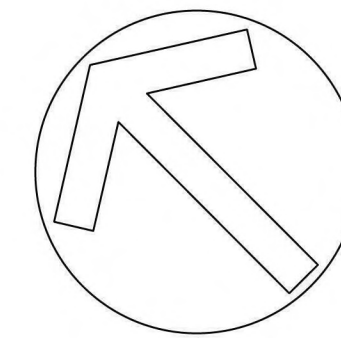
	FO	FO	FO	FIBER OPTIC - AERIAL
	FODB	FODB	FODB	FIBER OPTIC - DIRECT BURIED
	FOU	FOU	FOU	FIBER OPTIC - PLACED IN EXISTING CONDUIT
	FO(S)	FO(S)	FO(S)	FIBER OPTIC - SLACK SPAN
	>>	>>	>>	FIBER OPTIC - OVERHEAD GUY
)))	FIBER OPTIC - POLE TO POLE GUY
	COND	COND	COND	CONDUIT
<p>-EXISTING</p>				
	<i>ctv</i>	<i>ctv</i>	<i>ctv</i>	CABLE TV - AERIAL
	<i>ctvu</i>	<i>ctvu</i>	<i>ctvu</i>	CABLE TV - UNDERGROUND
	<i>E</i>	<i>E</i>	<i>E</i>	ELECTRIC- AERIAL
	<i>EU</i>	<i>EU</i>	<i>EU</i>	ELECTRIC- UNDERGROUND
	<i>T</i>	<i>T</i>	<i>T</i>	TELEPHONE - AERIAL
	<i>TU</i>	<i>TU</i>	<i>TU</i>	TELEPHONE - UNDERGROUND
	<i>W</i>	<i>W</i>	<i>W</i>	WATER
	<i>SS</i>	<i>SS</i>	<i>SS</i>	SANITARY SEWER
	<i>SW</i>	<i>SW</i>	<i>SW</i>	STORM WATER
	<i>G</i>	<i>G</i>	<i>G</i>	GAS
<p><u>OTHER</u></p>				
				RIGHT-OF-WAY
				CENTER LINE OF ROAD
				EDGE OF PAVEMENT
				WATER WAY
				GUIDE RAIL
				MUNICIPAL BOUNDARY

	UTILITY POLE - CUSTOMER - OWNED
	DOWN GUY - ANCHOR
	DOWN GUY - SIDEWALK
	HANDHOLE - FIBER OPTIC
	CORE BORE, UTILITY IDENTIFICATION
	EXCAVATION
<p>-EXISTING</p>	
	UTILITY POLE
	HANDHOLE - TELEPHONE
	HANDHOLE - CABLE TV
	HANDHOLE - ELECTRIC
	HANDHOLE - UNKNOWN
	STORM WATER GRATE
	MANHOLE - TELEPHONE
	MANHOLE - CABLE TV
	MANHOLE - ELECTRIC
	MANHOLE - SANITATION
	MANHOLE - WATER
	MANHOLE - UNKNOWN
	METER/VALVE - GAS
	FIRE HYDRANT
	TRAFFIC SIGNAL
	TRAFFIC SIGN
	RAILROAD CROSSING - SIGN
	RAILROAD CROSSING - SIGNAL
	RAILROAD CROSSING - GATE
	BENCHMARK
	CULVERT
	BRIDGE

ABANDONED	ABD	LINEAR FOOT	LT
ASPHALT	ASPH	LOW POINT OF SAG	LOP
AVENUE	AVE	MANHOLE	MH
BEARING	BRG	MILES PER HOUR	MPH
BENCH MARK	BM	MONUMENT	MON
BITUMINOUS	BIT	OFFSET	OFF
BLACK	BLK	ORANGE	ORN
BOULEVARD	BLVD	OUTSIDE DIAMETER	OD
BRIDGE OCCUPANCY LICENSE	BOL	PAVEMENT	PAV'T
CAST IRON PIPE	CIP	PERMANENT	PERM
CENTERLINE	CL	POINT	PT
CONCRETE PIPE	CP	POWER POLE	PP
CONDUIT	COND	PROJECT	PROJ
CONTROL POINT	CTP	PROPERTY LINE	PL
COORDINATE	COORD	RAILWAY	RW
CORRUGATED METAL PIPE	CMP	RAILROAD	RR
COUNTY	CO	REINFORCED CONCRETE PIPE	RCP
DEGREE	DEG OR °	REVISION	REV
DIAMETER	DIA OR Ø	RIGHT-OF-WAY	R/W
DRIVE	DR	ROAD	RD
EDGE OF CONCRETE	EC	ROUTE	RTE
EDGE OF PAVEMENT	EOP	SANITARY SEWER	SAN S
ELEVATION	ELEV	SEGMENT	SEG
EXISTING	EXIST	SHEET	SHT
FEET	FT OR '	SHOULDER	SHLDR
FIBER OPTIC	FO	SIDEWALK	SDWK
FIBER OPTIC CABLE	FOC	SOUTHERN YELLOW PINE	SYP
FIGURE	FIG	STANDARD	STD
FINISHED GRADE	FG	STATE ROUTE	SR
FIRE HYDRANT	FH	STATION	STA
FOOT	FT OR '	STREET	ST
GENERAL	GENL	STEEL	STL
GUIDE RAIL	GR	SUBSURFACE UTILITY ENGINEERING	SUE
HANDHOLE	HH	TELEPHONE POLE	TP
HEIGHT OF ATTACHMENT	HOA	TEMPORARY	TEMP
HIGHWAY	HWY	TEST PIT	TP
HIGHWAY OCCUPANCY PERMIT	HOP	TOP OF CURB	TC
HORIZONTAL	HOR	TOP OF RAIL	TR
HORIZONTAL DIRECTIONAL DRILL	HDD	TYPICAL	TYP
INCH	IN OR "	VARIABLE	VAR
INSIDE DIAMETER	ID	VERTICAL	VERT
IRON PIPE	IP	WALK	WK
LENGTH	LGTH	WORK ZONE TRAFFIC CONTROL	WZTC
LIMITED ACCESS	LA		

LOCATION DATA					SHEET NO. 004 OF 11
DISTRICT	COUNTY	ROUTE	SEGMENT	OFFSET	
4	40	ROAD_NUMBER	0010	1186	
PROJECT NAME: WB301-RT3-SEC4-HANL					
ORIGINAL DATE: 20 January 2026					
DRAWING NAME: Plan View					
DRAWING SCALE:  Feet					

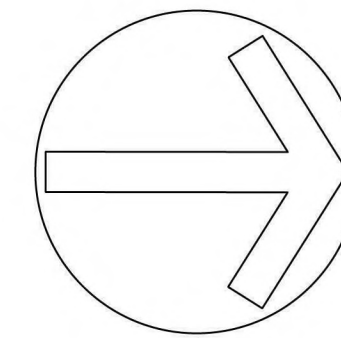




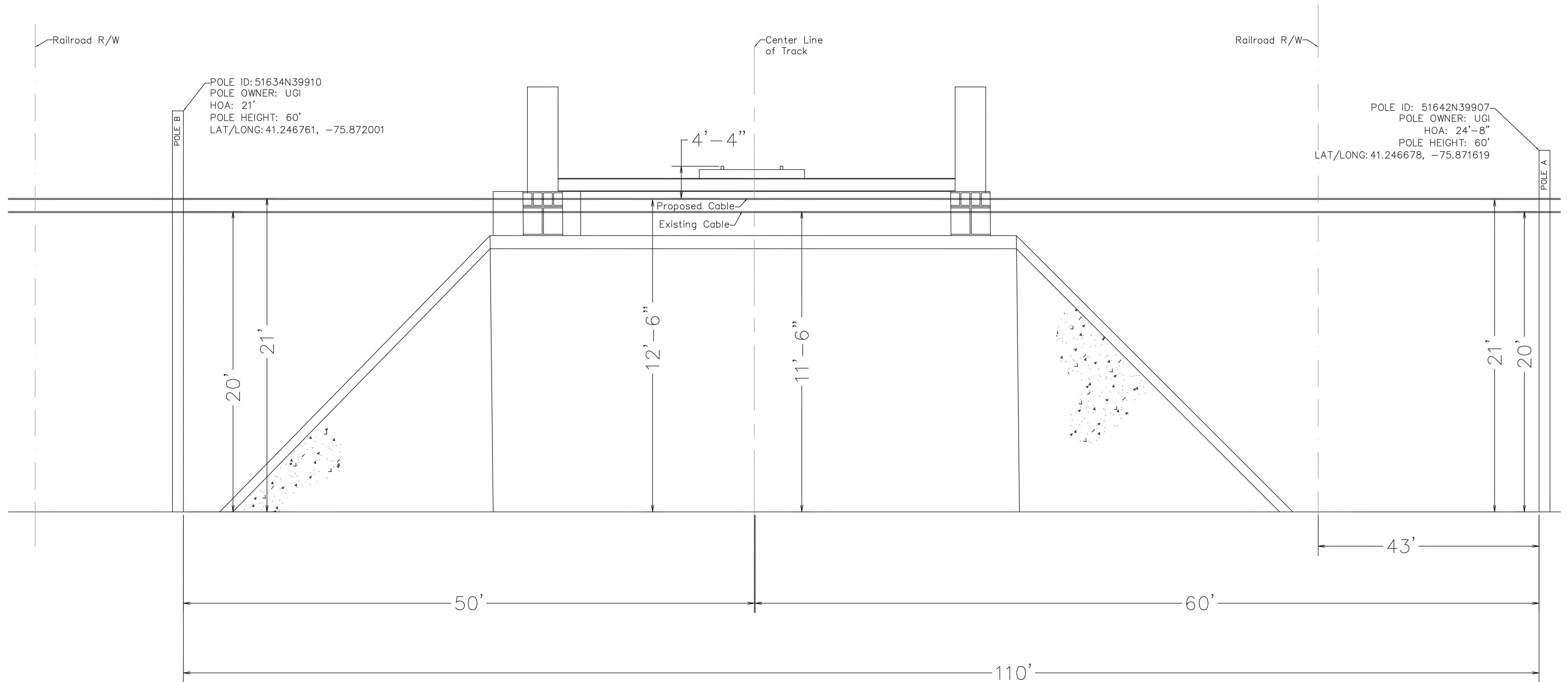
LOCATION DATA					SHEET NO.
DISTRICT	COUNTY	ROUTE	SEGMENT	OFFSET	
4	40	ROAD_NUMBER	0010	1186	005 OF 11
PROJECT NAME:		WB301-RT3-SEC4-HANL			
ORIGINAL DATE:		20 January 2026			
DRAWING NAME:		Section View(s)			
DRAWING SCALE:		0 5 10 Feet			



SECTION VIEW 1
FACING NORTHWEST
SCALE: 1:3



LOCATION DATA					SHEET NO.
DISTRICT	COUNTY	ROUTE	SEGMENT	OFFSET	
4	40	ROAD_NUMBER	0010	1186	006 OF 11
PROJECT NAME:		WB301-RT3-SEC4-HANL			
ORIGINAL DATE:		20 January 2026			
DRAWING NAME:		Section View(s)			
DRAWING SCALE:		Feet			



SECTION VIEW 2
FACING SOUTH WEST
SCALE: 1:4

