

Rail Safety Division Application Type (check all that apply):

- E-Installation, removal or substitution of warning devices at a public crossing
- G-Construction, alteration, relocation, abolition or suspension of a public crossing
- P-Installation of traffic signals with preemption on the approach to a public crossing
- W-Installation of a fixed utility company's facilities at a public crossing (Pipe & Wire)
- X-Exemption from the Commission's railroad clearance requirement

Application Docket No.
To Be Assigned

For Applications E/G/P/W use caption 1, for X use caption 2 (delete unused caption):

In re: (1) Application of Greenlight Networks for approval to alter the public crossing 951860V by the an aerial build attaching to existing PPL poles using 3/8-inch strand and an over lashed 144 fiber where 8th Ave, Bethlehem, PA, 18018, USA crosses above grade the track(s) of Norfolk Southern Railroad Co, located in Bethlehem, PA in Northampton county .
(2) Application of Greenlight Networks for approval of an exemption from the Commission's Clearance Requirements (52 Pa. C.S. §§ 33.121 - 33.126) for a track operated by Norfolk Southern Railroad Co, located in Bethlehem, PA in Northampton county.

To Pennsylvania Public Utility Commission:

1. The name, address, telephone number, and e-mail address of the applicant are:
Greenlight Networks, 1777 E Henrietta Rd, Rochester NY 14623, 978-857-3114
2. The name, address, telephone number, and e-mail address of the applicant's attorney are:
Kevin Espinoza, 1777 E Henrietta Rd Building A, Suite 120, Rochester, NY 14623 , 716-463-2633,
Kespinoza@greenlightnetworks.com
3. Greenlight Networks is expanding their fiber optic network to reach more customers in the Bethlehem, PA area. It will be aerial build, attaching to existing PPL poles. The build is crossing over a Norfolk Southern RR using a 3/8-inch strand and overlashing a 144 fiber
4. The existing PPL poles along 8th ave, crossing over CNJ Railroad will be upgraded by PPL, from a 50' class 2 pole with 70' class 1 pole. Greenlight Networks will then attach their 144 fiber in their communications space on the pole, maintaining the minimum clearance from the cables to railroad. The exact crossing over the railroad will be at 40.6297077, -75.3951463. This proposal has been approved by PPL on Application 309861. This proposal is also in the middle of approval from Norfolk Southern on Application 38370.
5. The parties that may be affected by the proposed alteration are as follows (see attached Certificate of Service): PPL (existing utilities), Norfolk Southern, Verizon and Bethlehem city.
6. Our traffic control will include all signs, signals, markings, illumination, flaggers and other warning devices and their supports along roadways either approaching or at highway-rail grade crossings per regulation. A bucket truck will be on site for the actual over lashing fiber.
7. This is a largely funded project where Greenlight Network will own and maintain their fiber networks. Greenlight Networks is expanding their networks throughout PA and MD

8. The application is necessary or proper for the following reason(s): Construction, alteration, relocation, abolition or suspension of a public crossing

Wherefore, Nicole Burgess (maverick corporation) prays your Honorable Commission to approve the application:

A handwritten signature in black ink that reads "Nicole Burgess". The signature is written in a cursive, flowing style.

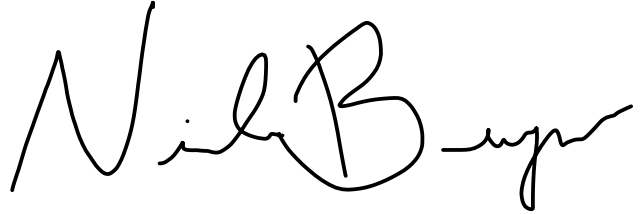
(Signature of Applicant)

VERIFICATION

I, Nicole Burgess, hereby state that the facts above set forth are true and correct (or are true and correct to the best of my knowledge, information and belief) and that I expect to be able to prove the same at a hearing held in this matter. I understand that the statements herein are made subject to the penalties of 18 Pa. C.S. § 4904 (relating to unsworn falsification to authorities).

Click or tap to enter a date.

03/09/2026

A handwritten signature in black ink that reads "Nicole Burgess". The signature is written in a cursive style with a large, prominent "N" and "B".

Date

(Signature)

CERTIFICATE OF SERVICE

I hereby certify that I have this day served a true copy of the foregoing document upon the participants, listed below, in accordance with the requirements of § 1.54 (*relating to service by participant*).


P.O. Box 3265
Harrisburg, PA 17105-3265

(Continues next page)

CERTIFICATE OF SERVICE

I hereby certify that I have this day served a true copy of the foregoing document upon the participants, listed below, in accordance with the requirements of § 1.54 (*relating to service by participant*).

Dated this day of ,20



(Signature)



GREENLIGHT NETWORKS

CORPORATE ADDRESS:

1777 E. Henrietta Road Suite #120
Rochester, NY 14623

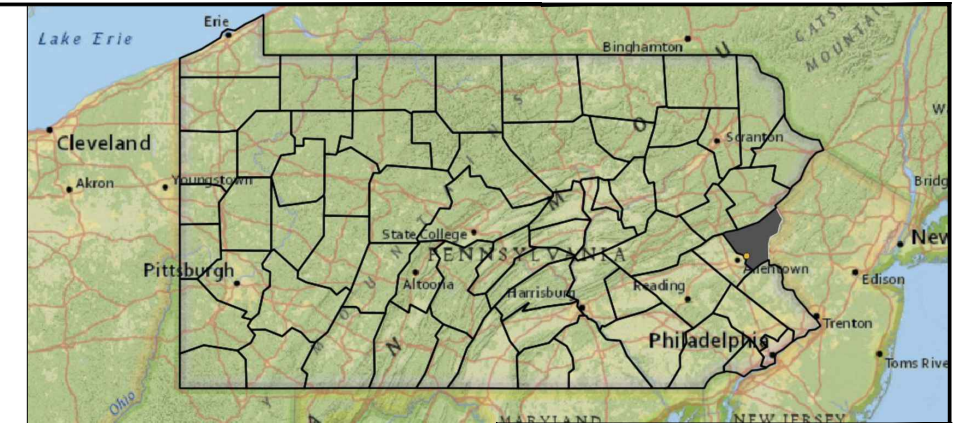
SITE NAME: NFRR ROW-002

AER Footage: 202'

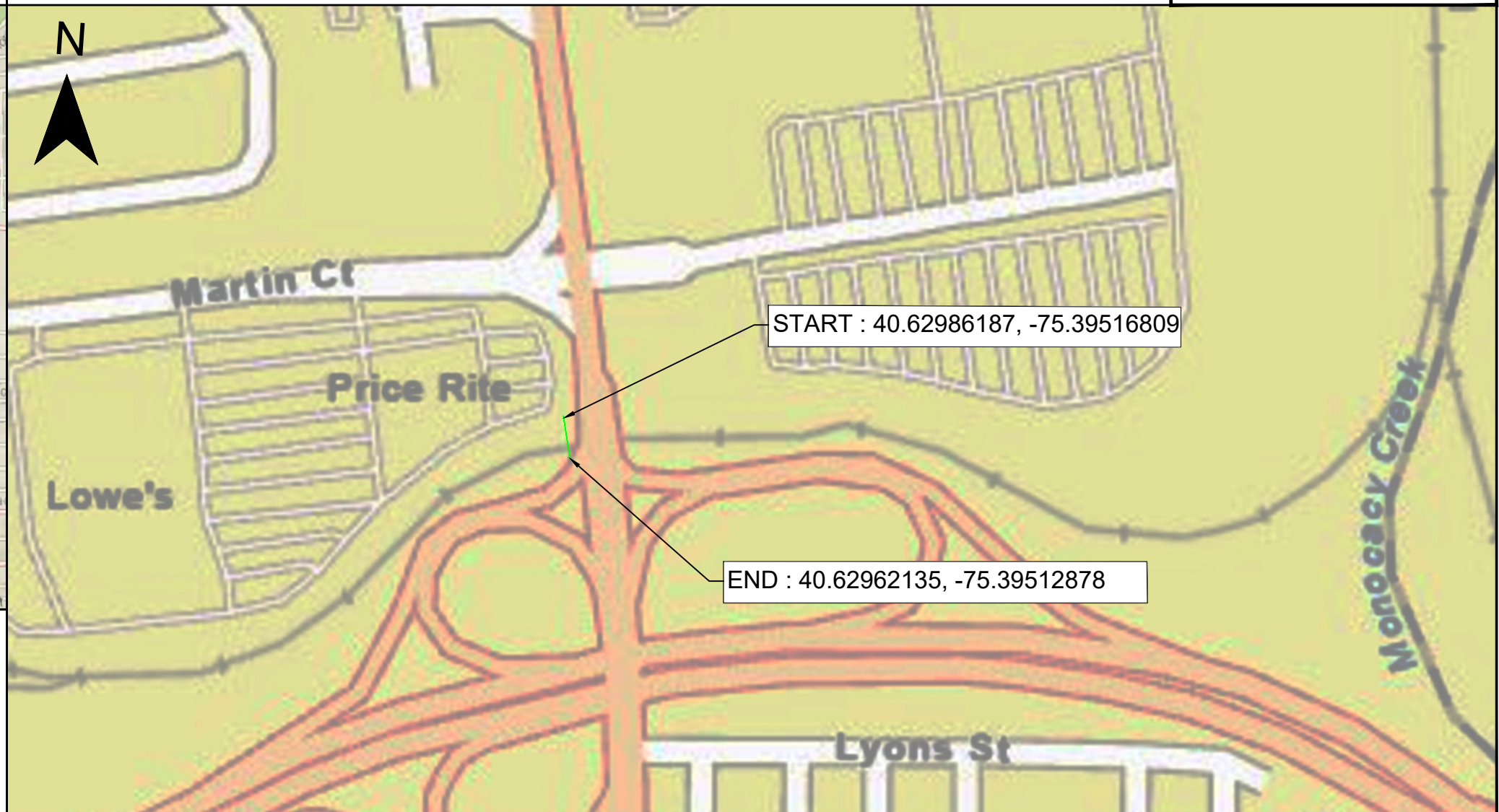
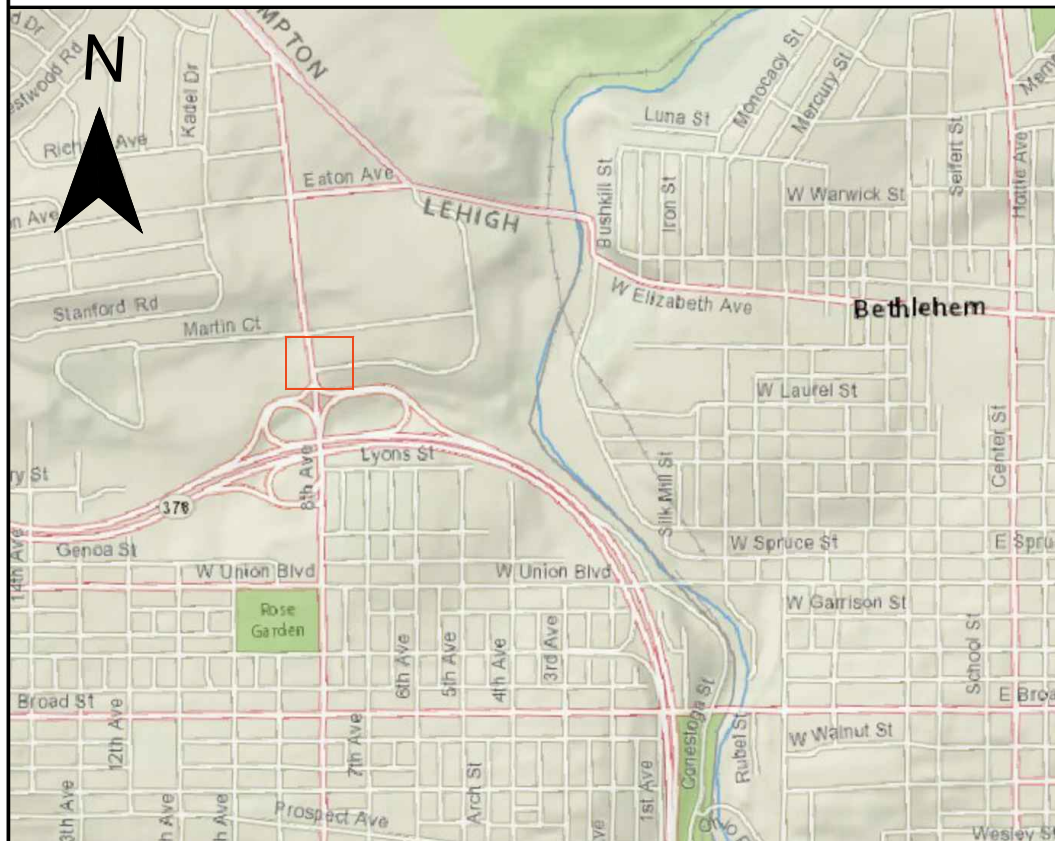
Bethlehem, PA

Bethlehem

OUTSIDE PLANT CONSTRUCTION FIBER
OPTIC CABLE ROUTE BETHLEHEM, PA
CROSSING NORFOLK SOUTHERN RR



PE STAMP:



NOTE:
THE PLAT, PARCEL AND RIGHT OF WAY DIMENSIONAL INFORMATION HAS BEEN ACQUIRED AND PLOTTED ON THESE PLANS USING THE BEST AVAILABLE DATA AND AERIAL IMAGERY. ALL UTILITY INFORMATION SHOWN ON PLANS WAS ACQUIRED FROM THE BEST AVAILABLE DATA AND AS REASONABLY OBTAINED BY PHYSICAL FIELD SURVEY, IT REMAINS THE RESPONSIBILITY OF OTHERS TO FIELD VERIFY ALL DATA PRIOR TO PROJECT START. LINE LOCATES ARE THE RESPONSIBILITY OF OTHERS TO VERIFY CONFLICT HORIZONTALLY AND VERTICALLY OF EXISTING FACILITIES.



DO NOT SCALE DRAWINGS

CONTRACTOR SHALL VERIFY ALL PLANS & EXISTING DIMENSIONS & CONDITIONS ON THE ROUTE BEFORE PROCEEDING WITH THE WORK AND IS RESPONSIBLE FOR SAME

PROJECT NO:	1	22/04/2025
DRAWN BY:		
CHECKED BY:		
PERMIT NAME:		22/04/2025

TITLE SHEET

SHEET NUMBER

T-1



GREENLIGHT NETWORKS

GENERAL NOTES:

PE STAMP:

REV	DESCRIPTION	DATE
0		22/04/2025

DRAWN BY:
 CHECKED BY:
 DATE PRINTED: 22/04/2025



greenlight
networks

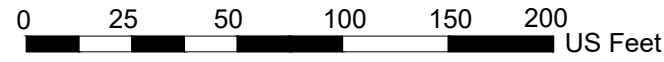


INDEX

SHEET NUMBER

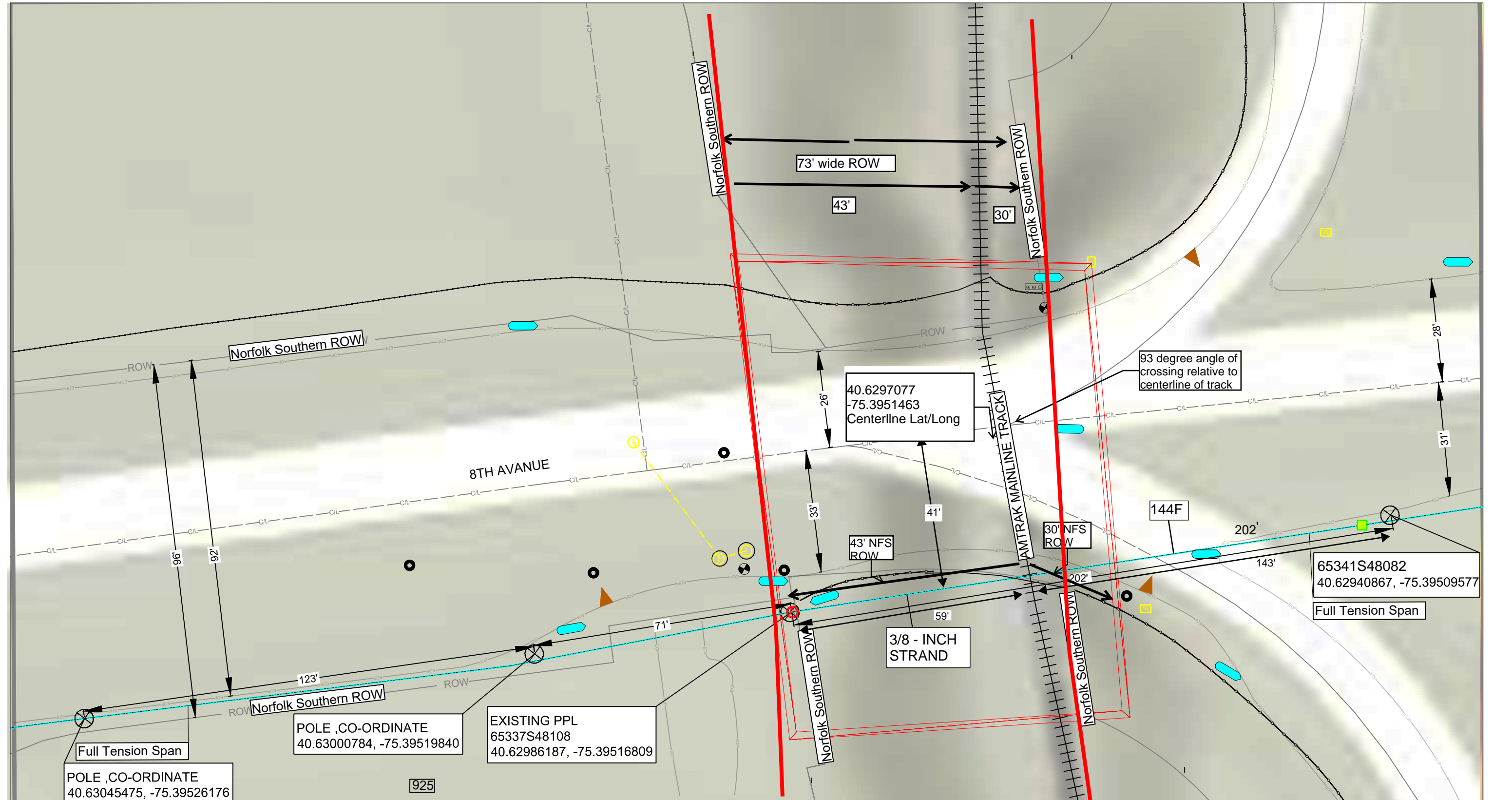
I-1

PE STAMP:



NFRR ROW-002 Page 1 of 1

Water	Transformer	Marker	Poles
Gas	Sewer	Other Manhole	Fibrecable
Retaining Wall	Pedestal	Hydrant	Conduit
Guardrail	Traffic Light	Valve	Permit Area
Fench Line	Street Light	Riser	Vault
Power	Cabinet	Sewer Inlet	



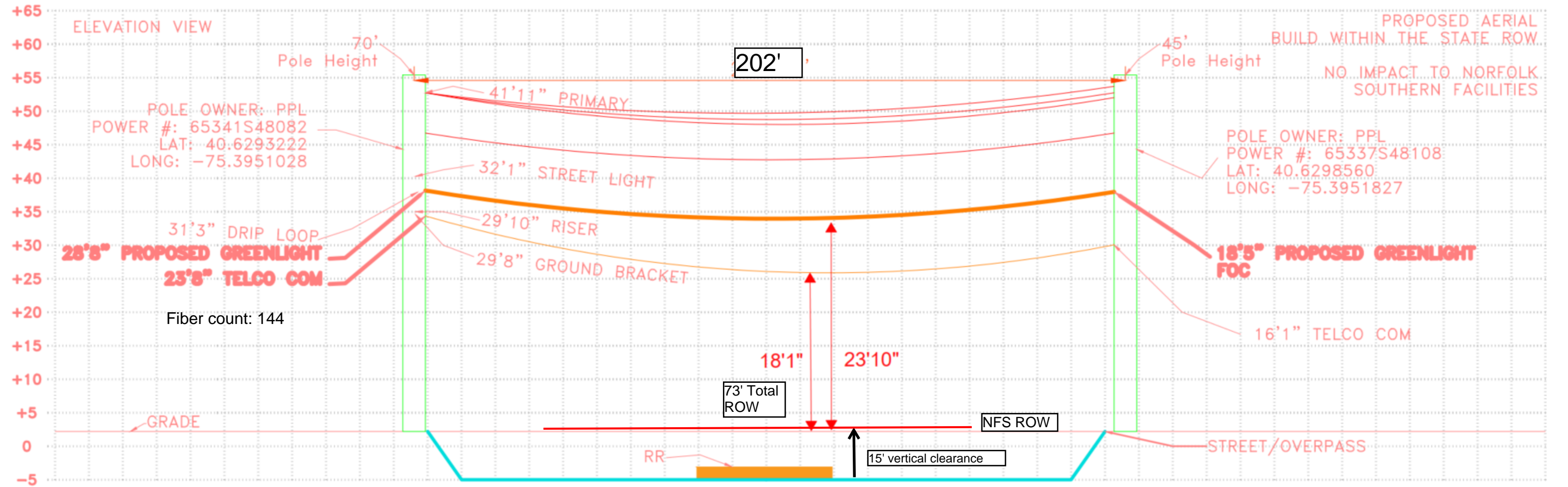
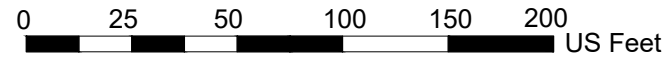
PE STAMP:



PROPOSED RAILROAD CROSSING CONDITIONS APPROVED BY POLE OWNER - PPL



NFRR ROW Page 1 of 1



Make Ready Notification

Application Details

FCC Timeline

Large Order

Due date for communications make-ready	October 29, 2025
Due date for power make-ready	135 days from receipt of Construction Make Ready Payment

Any entity with an existing attachment may modify the attachment consistent with the specified make-ready before the specified due date. If make-ready is not completed by the specified due date, the applicant may complete the make-ready specified.

Date Notification Sent: August 15, 2025

Customer Name	Greenlight Networks PA, LLC
Customer Job	MAV_ECPPL001J
PPL App #	309861
PPL WR #	
PPL WO #	13879650
PPL Region	Lehigh
PPL Area	Bethlehem
Link to Map & Photos	Desktop Link
Foreign App #	

Contact Addresses of Related Parties

PPL

ATTN: Carl Ayoub (CAyoub@pplweb.com, ppl@katapultwebservices.com)
P.O. Box 25239
Lehigh Valley, PA 18002-5239

Greenlight Networks PA, LLC

Greenlight Networks
1777 E. Henrietta Road Suite #120
Rochester, NY 14623



Katapult Engineering
54 Old York Road, Dillsburg PA 17019
717-432-0716
www.katapultengineering.com

Summary of Work Required

*** This job contains overlapping work. Final design heights are listed on overlapping poles. Existing heights and move amounts are dependent upon construction status of overlapping designs. ***

No. In App (SCID)	PPL Pole # (Owner)	PPL Make Ready	Foreign Utility Make Ready	Customer Directive	Cost Causer	GPS Coord.
74 (074)	65346S48027	Replace 50' class 3 pole with 70' class 1 pole	<p>Level 3 (Formerly TelCove PECO):</p> <ul style="list-style-type: none"> Fiber Optic Com at 30'-5": Transfer to new pole at 31'-0". <p>RCN:</p> <ul style="list-style-type: none"> CATV Com at 29'-7": Transfer to new pole at 30'-0". CATV Com at 29'-7": Transfer to new pole at 30'-0". <p>City of Bethlehem:</p> <ul style="list-style-type: none"> Street Light at 28'-7": Transfer to new pole at 28'-7"; Ground Bracket. Transfer to new pole at 26'-6". Riser at 25'-6": Transfer to new pole at 25'-6". Streetlight Drip Loop at 25'-2": Transfer to new pole at 25'-2". Traffic Cable at 23'-7": Transfer to new pole at 23'-0". <p>Service Electric Cablevision:</p> <ul style="list-style-type: none"> CATV Com at 24'-10": Transfer to new pole at 24'-0". 	<p>Greenlight Networks PA, LLC:</p> <ul style="list-style-type: none"> Attach Fiber Optic Com at 32'-0". 	<p>50% RCN 50% Level 3 (Formerly TelCove PECO)</p> <p>Pole fails loading analysis after RCN attachments.</p>	40.627949, -75.395038
75 (075)	65344S48057	Replace 45' class 3 pole with 70' class 1 pole	<p>City of Bethlehem:</p> <ul style="list-style-type: none"> Street Light at 30'-6": Ground Bracket. Transfer to new pole at 30'-0". Streetlight Drip Loop at 27'-6": Transfer to new pole at 29'-3". Traffic Cable at 23'-5": Transfer to new pole at 22'-6". <p>Level 3 (Formerly TelCove PECO):</p> <ul style="list-style-type: none"> Fiber Optic Com at 26'-4": Transfer to new pole at 26'-6". <p>RCN:</p> <ul style="list-style-type: none"> CATV Com at 25'-4": Transfer to new pole at 25'-6". CATV Com at 24'-11": Transfer to new pole at 24'-6". <p>Service Electric Cablevision:</p> <ul style="list-style-type: none"> CATV Com at 24'-5": Transfer to new pole at 23'-6". 	<p>Greenlight Networks PA, LLC:</p> <ul style="list-style-type: none"> Attach Fiber Optic Com at 27'-6". 	<p>100% Level 3 (Formerly TelCove PECO)</p> <p>Level3 attachment causes the pole to fail loading analysis.</p>	40.628621, -75.395067
76 (076)	65341S48082	<ul style="list-style-type: none"> Pole Top: Replace 50' class 2 pole with 70' class 1 pole. Attach Power Guy at 41'-11". Riser at 29'-10": Extend 30". 	<p>City of Bethlehem:</p> <ul style="list-style-type: none"> Street Light at 32'-1": Lower 110". Ground Bracket. Riser at 29'-10": Extend 30". 	<p>Greenlight Networks PA, LLC:</p> <ul style="list-style-type: none"> Attach Fiber Optic Com at 28'-8". Bond to ground wire. 	<p>50% PPL Company 50% Greenlight Networks PA, LLC</p> <p>Pole fails PPL spec.</p>	40.629317, -75.395088
(076.A)	65354S48078		No Foreign Utility Make Ready	No Customer Directive	<p>100% PPL Company</p> <p>New guy pole install needed to solve PPL spec failure on the adjacent pole to the West.</p>	40.629333, -75.394800
77 ** (077)	65337S48108	No PPL Company Make Ready	<p>Verizon Pennsylvania Inc.:</p> <ul style="list-style-type: none"> Telco Com at 16'-1": Resag span with bearing 351° at 14'-7" up to 15'-6". 	<p>Greenlight Networks PA, LLC:</p> <ul style="list-style-type: none"> Attach Fiber Optic Com at 18'-5". 	No Make Ready	40.629865, -75.395178