

Rail Safety Division Application Type (check all that apply):

- E-Installation, removal or substitution of warning devices at a public crossing
- G-Construction, alteration, relocation, abolition or suspension of a public crossing
- P-Installation of traffic signals with preemption on the approach to a public crossing
- W-Installation of a fixed utility company's facilities at a public crossing (Pipe & Wire)
- X-Exemption from the Commission's railroad clearance requirement

Application Docket No.
To Be Assigned

For Applications E/G/P/W use caption 1, for X use caption 2 (delete unused caption):

In re:

Application of Philadelphia Water Dept. (Katelyn Johnson) for approval to alter the public crossing DOT # 589303N by the installation of water pipe where South 49th Street crosses at grade the track(s) of CSX, located in Philadelphia in Philadelphia County.

To Pennsylvania Public Utility Commission:

1. The name, address, telephone number, and e-mail address of the applicant are:

Katelyn Johnson
1101 Market St, FI 2
Philadelphia, PA 19107
<katelyn.johnson@phila.gov>

2. The name, address, telephone number, and e-mail address of the applicant's attorney are:

Laurice I. Smith
1101 Market St, FI 5
Philadelphia, PA 19107
<laurice.smith@phila.gov>

3. [This paragraph to contain a general statement of the nature and character of service rendered by the applicant and the corporate right to alter said crossing.]

The Philadelphia Water Department owns, maintains, and operates water mains and sewers in the city of Philadelphia. PWD retains a right-of-way to access, repair, and replace existing infrastructure.

4. [This paragraph to contain a statement of the nature and character of the alteration, approval of which is sought, reference being made to the DOT number(s), exact location(s) and plans filed as exhibits, as applicable.]

Philadelphia Water Department Capital Project W-20611-D will install a 12" Ductile Iron water main in a 20" Steel casing pipe underneath the at-grade CSX rail in S. 49th St between Grays Ave and Botanic Ave in Philadelphia, PA. The water main will be replacing the existing 6" and 12" mains and be installed using the jack and bore method with launching/receiving pits outside of fencing on either side of the tracks (no closer than 25' from the center of the tracks) with a minimum 5'-6" cover. This work is required for maintaining continued water service to the City of Philadelphia.

DOT # 589303N

Latitude 39.938196, Longitude -75.209041

5. The parties that may be affected by the proposed alteration are as follows (see attached Certificate of Service):

[This paragraph to contain the names of public utilities, municipalities, corporations, or property owners concerned in or affected by the proposed alteration of the crossing. United Transportation Union should be listed as an interested party (Application Type X only). If consent to the proposed alteration has been obtained from any municipality or department of the government of the Commonwealth of Pennsylvania, verified copies of such consent should be filed as exhibits.]

CSX Corporation, Inc.

PECo. Energy

Verizon Pennsylvania LLC

Philadelphia Gas Works

Philadelphia Streets Department Right-of-Way unit

6. [This paragraph to contain a statement of the average number of persons and vehicles of all kinds using the highway at the crossing and the number of train movements. Note: This paragraph may be omitted for Application Type W and X or where otherwise not applicable by entering N/A.]

Number of persons and vehicles: N/A; there is no public crossing at this location as railroad is bordered by fences and locked gates

Number of train movements: about once per hour

7. [This paragraph to contain a preliminary cost estimate for the proposed work and from what sources it is proposed to provide such funds. It shall also include the parties which will be responsible for installing, maintaining, and/or inspecting any proposed facilities. If not applicable enter N/A.]

Preliminary cost estimate for the proposed work at crossing only estimated at \$200,000
Total proposed work estimated at \$3.6 million

Funds will be supplied internally by Philadelphia Water Department Capital Funds
The contractor who presents the lowest bid and is awarded the project will be responsible for installing the proposed facilities, PWD Construction forces will be responsible for maintaining and inspecting the proposed facilities.

8. The application is necessary or proper for the following reason(s):

[This paragraph to contain a preliminary cost estimate for the proposed work and from what sources it is proposed to provide such funds. It shall also include the parties which will be responsible for installing, maintaining, and/or inspecting any proposed facilities. If not applicable enter N/A.]

Preliminary cost estimate for the proposed work at crossing only estimated at \$200,000
Total proposed work estimated at \$3.6 million

Funds will be supplied internally by Philadelphia Water Department Capital Funds
The contractor who presents the lowest bid and is awarded the project will be responsible for installing the proposed facilities, PWD Construction forces will be responsible for maintaining and inspecting the proposed facilities.

Wherefore, we pray your Honorable Commission to approve the application:

Katelyn Johnson 
Digitally signed by Katelyn Johnson
DN: cn=Katelyn Johnson
Reason: I am approving this document
Date: 2026.03.16 13:56:58-0400'

(Signature of Applicant)

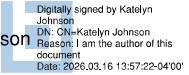
VERIFICATION

I, Katelyn Johnson, hereby state that the facts above set forth are true and correct (or are true and correct to the best of my knowledge, information and belief) and that I expect to be able to prove the same at a hearing held in this matter. I understand that the statements herein are made subject to the penalties of 18 Pa. C.S. § 4904 (relating to unsworn falsification to authorities).

3/16/26

Date

Katelyn Johnson



Digitally signed by Katelyn Johnson
DN: CN=Katelyn Johnson
Reason: I am the author of this document
Date: 2026.03.16 13:57:22-0400

(Signature)

CERTIFICATE OF SERVICE

I hereby certify that I have this day served a true copy of the foregoing document upon the participants, listed below, in accordance with the requirements of § 1.54 (*relating to service by participant*).

[List names, addresses and email addresses of participants served.

Participants shall include the Pennsylvania Department of Transportation, the Railroad Company, the county and municipality where the crossing is located, and any fixed utility companies with facilities at the crossing.

The applicant is responsible to serve all parties a copy of its application and associated exhibits. The Commission does not serve any party on your behalf.]

*Pennsylvania Department of Transportation
(PennDOT)
ROW & Utility Division, Bureau of Design
P.O. Box 3362
Harrisburg, PA 17105-3362*

*Pennsylvania Department of Transportation
Office of Chief Counsel
P.O. 8212
Harrisburg, PA 17105-8212*

*Pennsylvania Department of Transportation
District 6 - Philadelphia County Office
1901 Ruffner St
Philadelphia, PA 19140*

*CSX Transportation Inc.
Justin Roerig, Eric Horton
500 Water St, J-180
Jacksonville, FL 32202
<justin_roerig@csx.com>,
<eric_horton@csx.com>*

[List names, addresses and email addresses of participants served.

Participants shall include the Pennsylvania Department of Transportation, the Railroad Company, the county and municipality where the crossing is located, and any fixed utility companies with facilities at the crossing.

The applicant is responsible to serve all parties a copy of its application and associated exhibits. The Commission does not serve any party on your behalf.]

*Philadelphia County - District 3
Councilmember Jamie Gauthier
606 S 52nd St
Philadelphia, PA 19143*

*Philadelphia Department of Streets Highways
- Right-of-Way Unit
1401 JFK Blvd, Suite 960
Philadelphia, PA 19102
<StreetsROW.PlanReview@phila.gov>*

*Verizon Pennsylvania LLC
Paul Mazur
1717 Arch St.
Philadelphia, PA 19103
<paul.mazur@cyient.com>*

(Continues next page)

CERTIFICATE OF SERVICE

I hereby certify that I have this day served a true copy of the foregoing document upon the participants, listed below, in accordance with the requirements of § 1.54 (*relating to service by participant*).

[List names, addresses and email addresses of participants served.

Participants shall include the Pennsylvania Department of Transportation, the Railroad Company, the county and municipality where the crossing is located, and any fixed utility companies with facilities at the crossing.

The applicant is responsible to serve all parties a copy of its application and associated exhibits. The Commission does not serve any party on your behalf.]

Philadelphia Gas Works

Kevin Diep

1807 N. 9th St.

Philadelphia, PA 19122

<kevin.diep@pgworks.com>

PECo Energy

Daniel Paik

2301 Market St.

Philadelphia, PA 19103

<daniel.paik@exeloncorp.com>

[List names, addresses and email addresses of participants served.

Participants shall include the Pennsylvania Department of Transportation, the Railroad Company, the county and municipality where the crossing is located, and any fixed utility companies with facilities at the crossing.

The applicant is responsible to serve all parties a copy of its application and associated exhibits. The Commission does not serve any party on your behalf.]

Dated this 16 day of March, 20 26

Katelyn Johnson

Digitally signed by Katelyn Johnson
DN: CN=Katelyn Johnson
Reason: I am the author of this document
Date: 2026.03.16 13:57:40-04'00'

(Signature)

APPLICANT CHECKLIST (FOR REFERENCE ONLY)

- DOT numbers are included, where applicable
- Railroad owners and all operators have been identified
- Location map exhibit and gps coordinates have been included
- A plan of the proposed work, including the following items drawn and labeled, where applicable:
 - North arrow
 - Scale / Scale bar
 - Railroad right-of-way lines with dimensions
 - Roadway/Highway right-of-way lines with dimensions
 - Railroad track locations
 - Railroad or highway structures involved
 - Other applicable railroad or roadway/highway features
 - Proposed alteration
 - Aerial wireline installations:
 - Pole locations, with identifying pole numbers and pole owners
 - Span lengths from pole to pole
 - Clearances with respect to the top of rail to the proposed facility at the railroad crossing
 - Clearances from existing aerial catenary wirelines or power wirelines to the proposed facility
 - Underground pipeline/conduit installations:
 - Clearances with respect to the base of rail (at grade) or top of the roadway (grade separated) to the top of the proposed facility
 - Launching/receiving pit locations, if applicable
- A verification of original signature in accordance with [52 Pa. Code § 1.36](#) is included
- A certificate of service on the parties of record in accordance with [52 Pa. Code § 1.54](#) is included and a copy of the application has been served upon those parties listed. **The Commission does not serve any party on your behalf.**

RESOURCES

- [Sample Rail Safety Application Form](#)
- [Information on the application process and timelines](#)
- [Setting up an eFiling account \(Documents larger than 11"x17" in size should be eFiled\)](#)
- [FRA Rail Crossing Locator App](#) or [FRA - Safety Map](#) for help locating DOT numbers
- [FRA Grade Crossing Inventory](#) for more information about a crossing
- [Grade Crossing - Electronic Document Management System](#) for more information about a crossing
- [Railroad Company contact numbers](#)
- [List of Regional PennDOT District Office](#)
- [Municipal Statistics website](#) may be used in locating government officials

QUESTIONS?

- For help with eFiling, visit [our eFiling website](#) and review the "Questions or Problems" section
- For specific questions regarding filling out this application, contact the Rail Safety Division

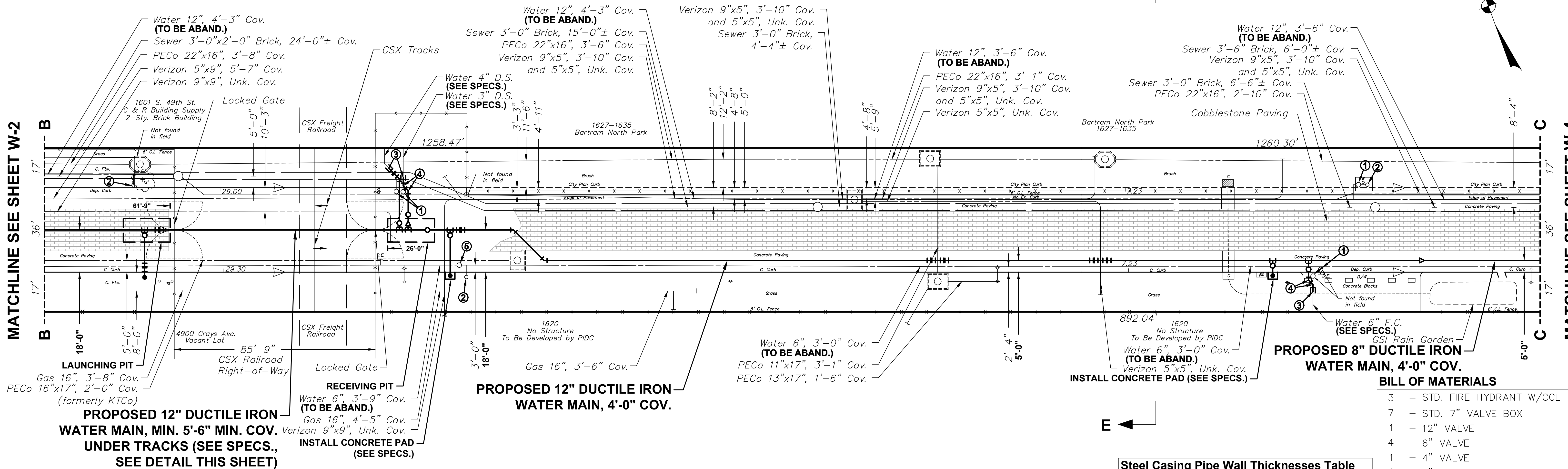
Note: See Sheet W-6 for Section E

SOUTH 49TH STREET

PARKING
PARKING

MATCHLINE SEE SHEET W-2

MATCHLINE SEE SHEET W-4



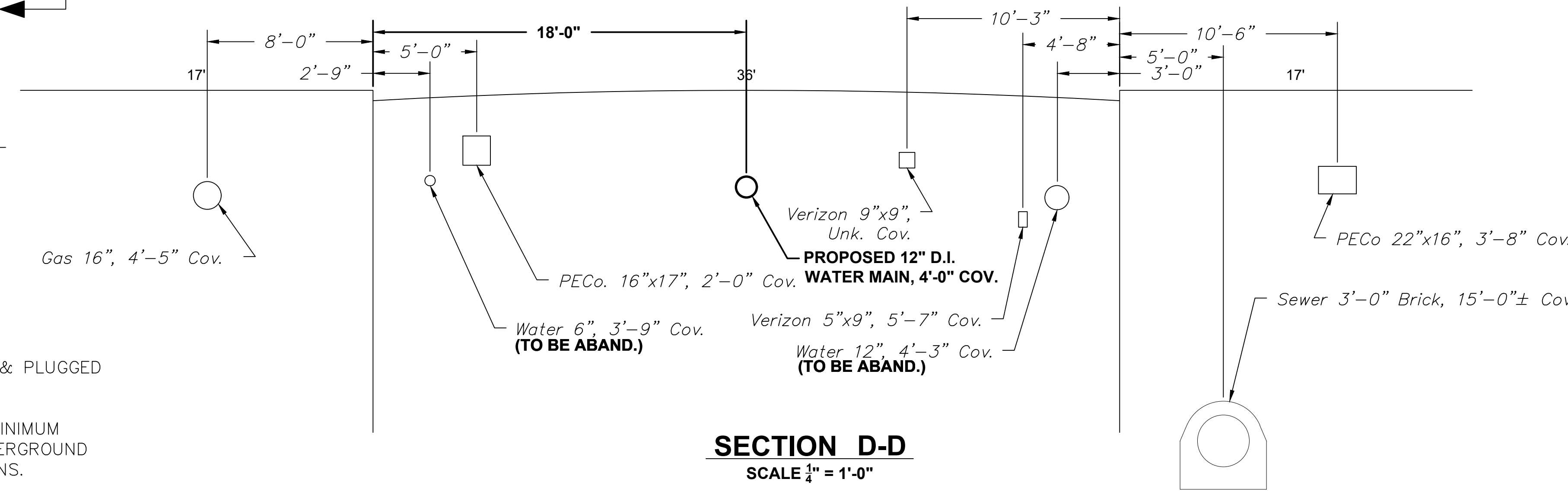
PIPE TOTALS (THIS SHEET)

20' ± 3"	DUCTILE IRON WATER MAIN
35' ± 4"	DUCTILE IRON WATER MAIN
65' ± 6"	DUCTILE IRON WATER MAIN
55' ± 8"	DUCTILE IRON WATER MAIN
595' ± 12"	DUCTILE IRON WATER MAIN

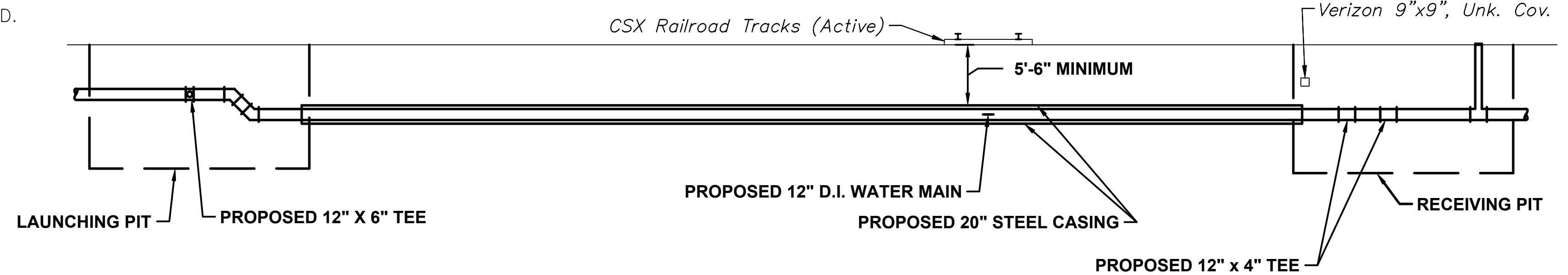
- NOTES:**
- EXISTING WATER MAINS SHALL BE CUT & PLUGGED AS APPROVED BY THE CITY ENGINEER.
 - THE CONTRACTOR SHALL MAINTAIN A MINIMUM 6-INCH CLEARANCE BETWEEN ALL UNDERGROUND STRUCTURES AND THE NEW WATER MAINS.
 - BILLS OF MATERIAL AND PIPE TOTALS ARE FOR THE CONVENIENCE OF THE CONTRACTOR ONLY AND PAYMENT WILL BE MADE ONLY FOR THE ACTUAL AMOUNT OF PIPE AND APPURTENANCES INSTALLED.
 - FIRE HYDRANTS SHALL NOT BE CONSTRUCTED OR RELOCATED UNTIL SUCH LOCATIONS HAVE BEEN APPROVED BY THE WATER DEPARTMENT CONSTRUCTION DIVISION IN THE FIELD.
 - ALL DISTANCES SHOWN ARE IN DISTRICT STANDARD MEASUREMENT.

- REMOVE FRAME & COVER - SEE SPEC'S.
- REMOVE FIRE HYDRANT - SEE SPEC'S.
- REMOVE PIPE AND/OR FITTING & RECONNECT.
- ROTATE FITTINGS AS REQUIRED.
- REMOVE & RETURN VALVE - SEE SPEC'S.

PROPOSED 12" DUCTILE IRON WATER MAIN, 4'-0" COV.



WATER MAIN PROFILE (UNDER CSX RAILROAD)
SCALE 1/8" = 1'-0"



BILL OF MATERIALS

- 3 - STD. FIRE HYDRANT W/CCL
- 7 - STD. 7" VALVE BOX
- 1 - 12" VALVE
- 4 - 6" VALVE
- 1 - 4" VALVE
- 1 - 3" VALVE
- 3 - 12"x6" HYDRANT ANCHOR TEE
- 1 - 12"x6" TEE
- 2 - 12"x4" TEE
- 14 - 12" 1/8 BEND (12 VERT.)
- 4 - 6" 1/8 BEND (2 VERT.)
- 3 - 4" 1/8 BEND (2 VERT.)
- 2 - 3" 1/8 BEND
- 1 - 12"x8" REDUCER
- 1 - 4"x3" REDUCER
- 1 - 6" SLEEVE
- 1 - 4" SLEEVE
- 1 - 3" SLEEVE

Steel Casing Pipe Wall Thicknesses Table

Pipe Diameter Nominal Pipe Size (in.)	Coated or Cathodically Protected Nominal Wall Thickness (in.)	Uncoated and Unprotected Nominal Wall Thickness (in.)
10 and under	0.1880	0.1880
12 & 14	0.1880	0.2500
16	0.2190	0.2810
18	0.2500	0.3120
20 & 22	0.2810	0.3440
24	0.3120	0.3750

NOTICE:
PURSUANT TO THE REQUIREMENTS OF PENNSYLVANIA ACT 287 OF 1974 (THE UNDERGROUND UTILITY LINE PROTECTION ACT), AS AMENDED BY PA ACT 121 OF 2008, THE CONTRACTOR SHALL CONTACT THE PENNSYLVANIA ONE CALL SYSTEM AT 1-800-242-1776, AT LEAST 3 DAYS PRIOR TO EXCAVATION.

HIGHWAY DISTRICT NO. 1 WARD NO. 5103
SURVEY DISTRICT NO. 7 WATER PLAT NO. 21
ONE CALL SERIAL NO. 20212563313 GPIS NO. G2019-00048

WATER MAIN RELAY PROJECT

SOUTH 49TH STREET
FROM
140' E OF GRAYS AVE. TO 140' W OF BOTANIC AVE.

APPROVED: CHIEF, DESIGN BRANCH, ENGINEERING DIVISION

CITY OF PHILADELPHIA
WATER DEPARTMENT

SCALES:
PLAN 1" = 20'
AND AS NOTED

WORK NO. W-20611-D
SHEET NO. W-3 OF 11 SHEETS

DRAWN BY	KATELYN JOHNSON	3/13/26
PROJECT ENGR.	KATELYN JOHNSON	3/13/26
SUPERVISOR		DATE