

LATITUDE: N40°09'30.02" LONGITUDE: W76°23'31.43"  
LANCASTER COUNTY, PENNSYLVANIA (M.P. 8.90)

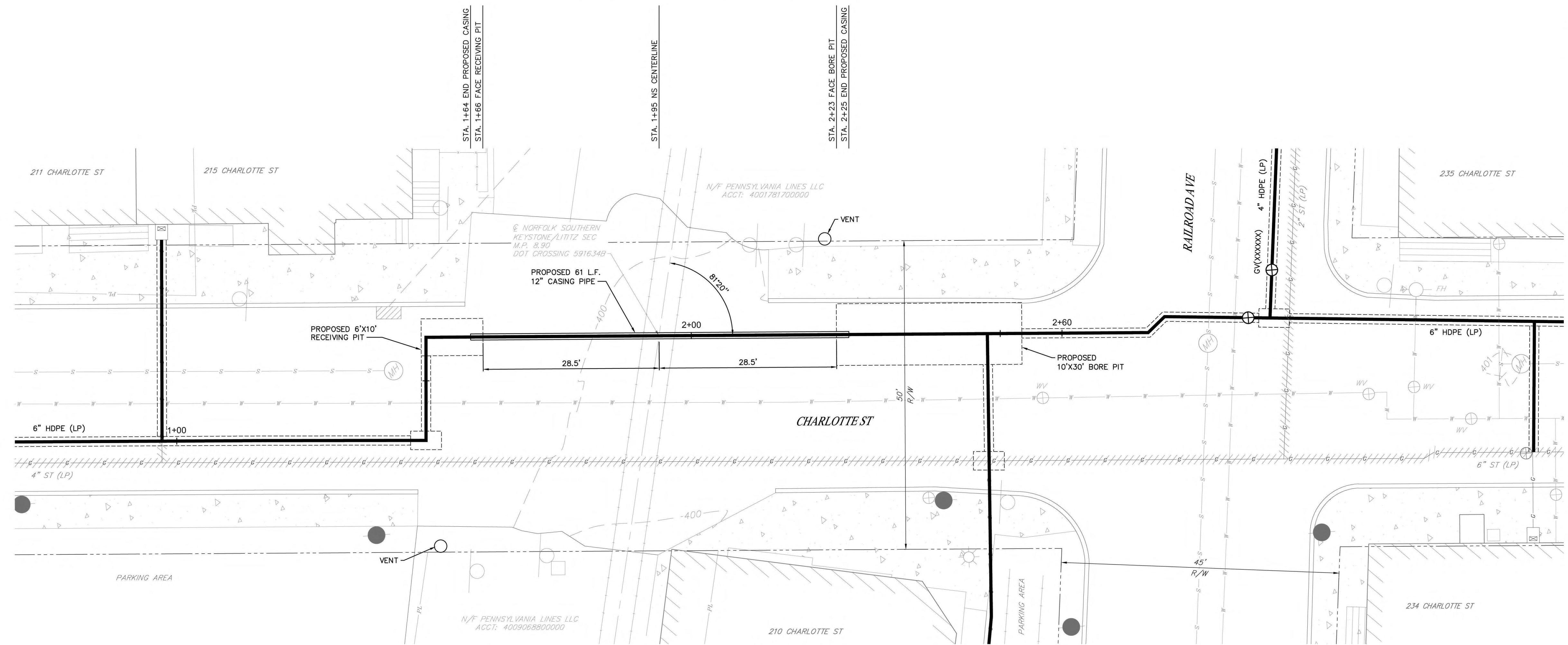
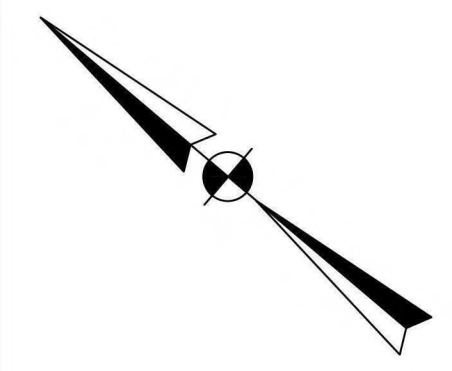
- NOTES:**
- THE CONTRACTOR SHALL PLACE A PA ONE-CALL AT 811 OR 1-800-242-1776 AT LEAST THREE (3) WORKING DAYS PRIOR TO ANY EARTH DISTURBANCE.
  - THE CONTRACTOR SHALL VERIFY LOCATIONS OF EXISTING BURIED UTILITIES, BOTH HORIZONTALLY AND VERTICALLY, PRIOR TO CONSTRUCTION.
  - THE PLANS ARE BASED ON THE FOLLOWING:
    - TOPOGRAPHIC SURVEY PERFORMED BY AEDES IN JUNE 2024.
    - EXISTING AND PROPOSED UGI FACILITIES PROVIDED BY UGI.
  - THE PROJECT IS LOCATED IN NAD83 PA STATE PLANE SOUTH, US FOOT. THE VERTICAL DATUM IS NAVD88.
  - CONTRACTOR SHALL FOLLOW REQUIREMENTS OF NORFOLK SOUTHERN'S NSCE-8 SPECIFICATIONS. CONTRACTOR SHALL ALSO ACQUIRE A RIGHT-OF-ENTRY PERMIT FROM NORFOLK SOUTHERN PRIOR TO START OF WORK AS NECESSARY.
  - PIPELINE AND CROSSING TO BE INSTALLED AND MAINTAINED IN ACCORDANCE WITH LAST APPROVED AMERICAN RAILWAY ENGINEERING AND MAINTENANCE OF WAY ASSOCIATION SPECIFICATIONS FOR PIPELINES CONVEYING FLAMMABLE AND NON-FLAMMABLE SUBSTANCES.
  - BLASTING NOT PERMITTED.
  - AS-BUILTS WILL BE REQUIRED UPON COMPLETION OF CONSTRUCTION. COORDINATE WITH PROTECTION SERVICES IF FURTHER ASSISTANCE IS NEEDED.
  - LINE BEGINS AT A POINT, ON EXISTING GRADE, 14 FEET HORIZONTALLY FROM CENTERLINE OF TRACK, MEASURED 19 INCHES BELOW BASE OF RAIL, AND EXTENDS DOWNWARD ON A 2H TO 1V SLOPE PER NSCE-8 4.3.1.F(6) AND PLATE III.

**SIGN SCHEDULE:**  
ALL SIGNS SHALL SHOW THE FOLLOWING INFORMATION:

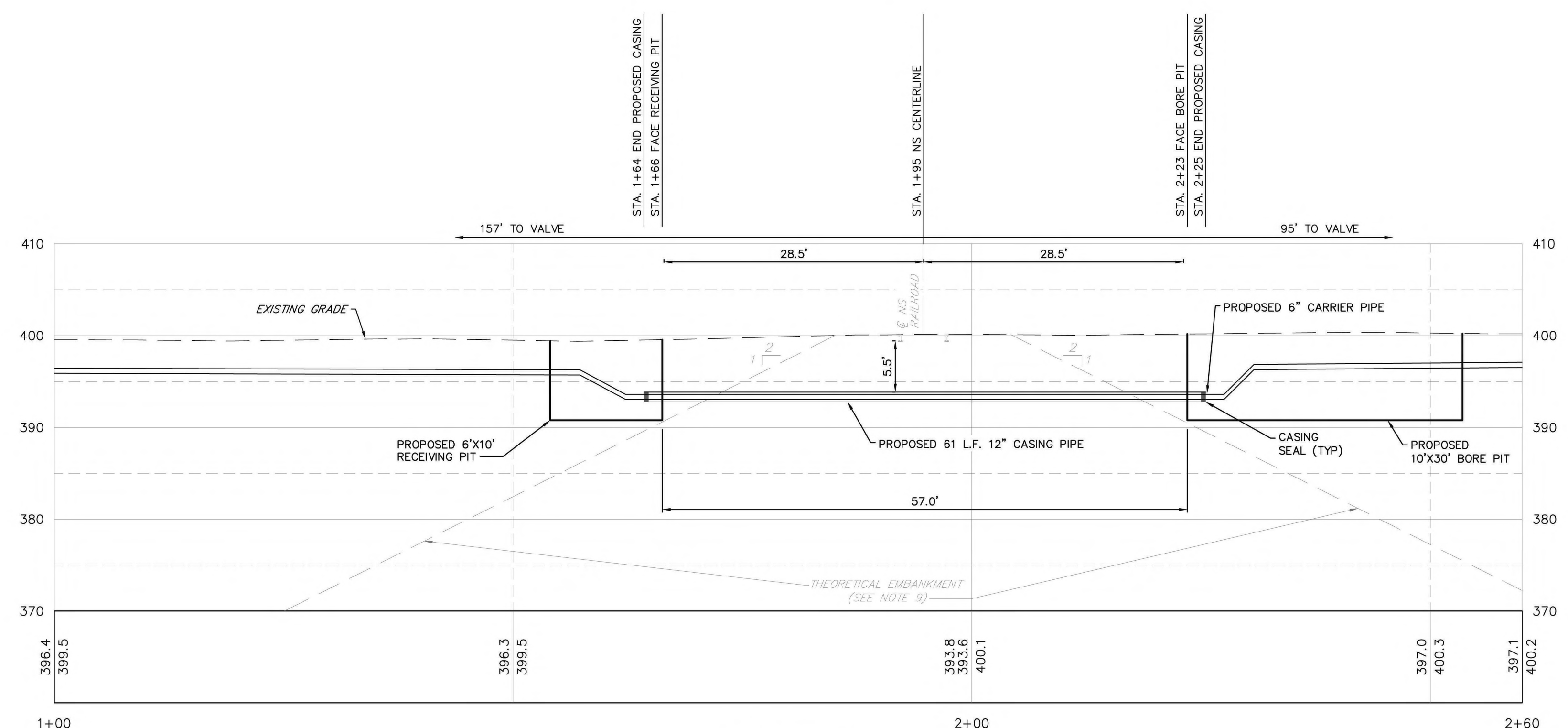
OWNER NAME: UGI UTILITIES, INC.  
OWNER ADDRESS: 262 CONESTOGA ST  
LANCASTER, PA 17603

CONTENTS OF PIPE: NATURAL GAS  
EMERGENCY TELEPHONE NO.: 1-(800)-276-2722

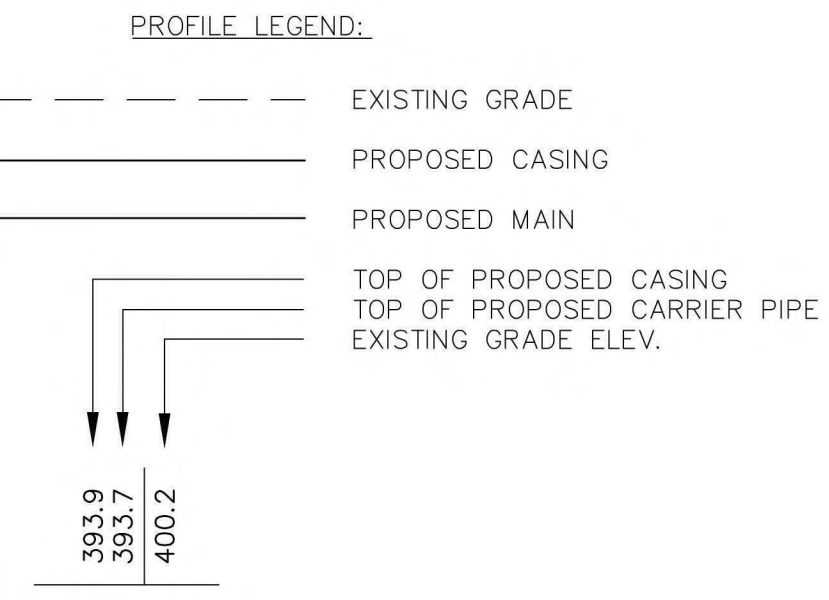
OPERATING PRESSURE: 0.5 PSIG  
APPROXIMATE DEPTH OF COVER: 5.5 FT



PLAN VIEW  
SCALE: 1"=10'



PROFILE VIEW  
SCALE: 1"=10'



**A-2026-3059652**

**CERTIFIED CORRECT PLANS**

Professional Engineer  
Approved by Bureau of Technical Utility Services  
PA PUBLIC UTILITY COMMISSION

ATTEST  
Secretary

**UGI**  
Energy to do more®

UGI  
Utilities, Inc.

1301 AIP Drive  
Middletown, PA 17057

**811**  
Know what's Below.  
Call before you dig.

FINAL DESIGN TICKETS

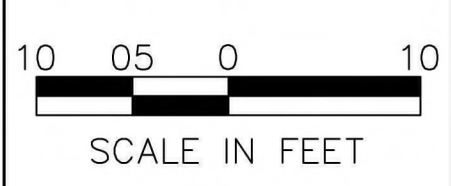
20241932827  
20241933686  
20241933742

**AED**  
Energy Services  
Powered by ARG™

**UGI CONTACT INFORMATION:**

PROJECT OWNER:  
EVAN BAUER  
717-415-7429

PROJECT MANAGER:  
N/A



S CHARLOTTE ST LTIP  
GAS MAIN  
MANHEIM BOROUGH  
LANCASTER COUNTY, PA

FP NO.: B00XXXX / SO NO.: X000XXXX

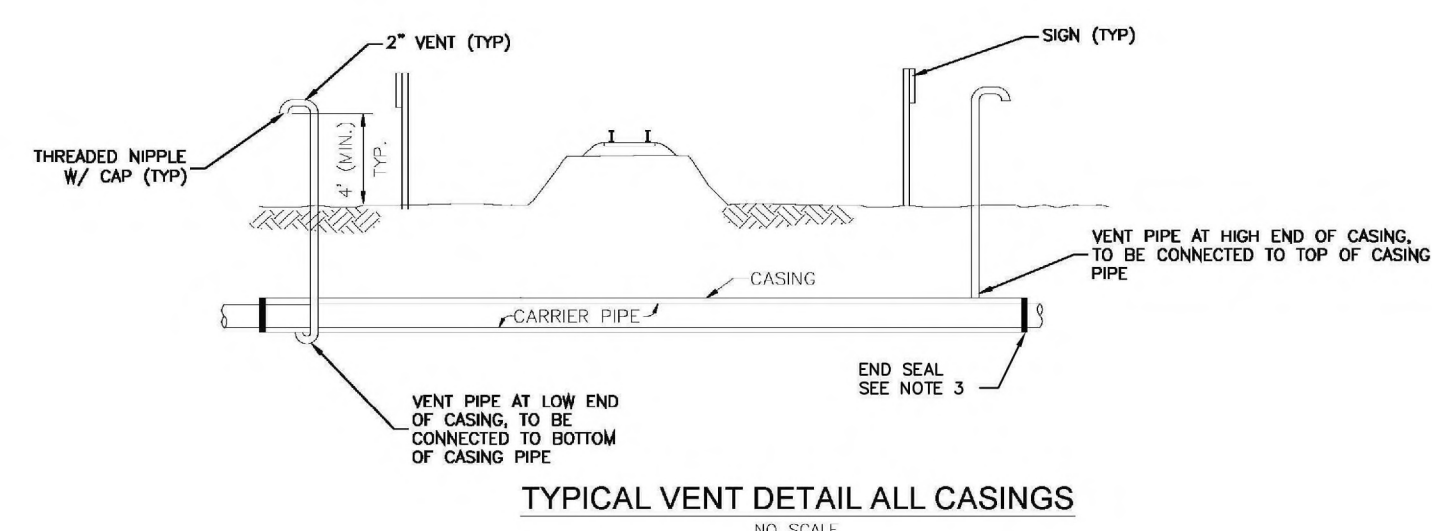
SIZE	MATERIAL	METHOD	WORK REQUEST NO.	SAP ERP NO.
XXXXXX	XXXXXX	XXXXXX	XXXXXX	XXXXXX

**RR-1**

**PLAN AND PROFILE VIEW**

Sheet 01 of 02

PIPE DATA SHEET		
	CARRIER PIPE	CASING PIPE
CONTENTS TO BE HANDLED	NATURAL GAS	N/A
MAX. ALLOWABLE OPERATING PRESSURE	0.5 PSIG	N/A
NOMINAL SIZE OF PIPE	6" DR 11	12"
OUTSIDE DIAMETER	6.625"	12.75"
INSIDE DIAMETER	5.421"	12"
WALL THICKNESS	0.602"	0.375"
WEIGHT PER FOOT	4.997 POUNDS	51.58 POUNDS
MATERIAL	HDPE	STEEL
PROCESS OF MANUFACTURE	EXTRUSION	HFW-ERW
SPECIFICATION	PE 4710	API-5L
GRADE OR CLASS (SPECIFIED MINIMUM YIELD STRENGTH)	3500 PSI	GRADE X52
TEST PRESSURE	90 PSIG MIN	N/A
TYPE OF JOINT	BUTT FUSION	WELDED
TYPE OF COATING	N/A	14-16 MILS FBE & 40 MILS ARO
DETAILS OF CATHODIC PROTECTION	N/A	NONE
DETAILS OF SEALS OR PROTECTION AT END OF CASING	Z-SEAL, LINK SEAL 6X12	Z-SEAL, LINK SEAL 6X12
CHARACTER OF SUBSURFACE MATERIAL	CL-ML	CL-ML
APPROXIMATE GROUND WATER LEVEL	10-30 FT	10-30 FT
SOURCE OF INFORMATION SUBSURFACE CONDITIONS	USDA SOIL SURVEY USGS	USDA SOIL SURVEY USGS

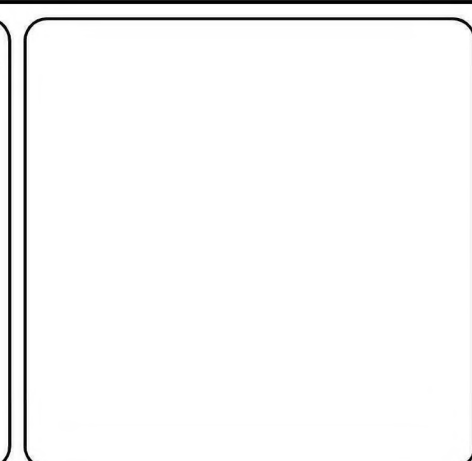


- CASING NOTES**
1. STEEL CASING PIPE, SHALL CONFORM TO API 5L, GRADE X52, 14-16 MILS FBE & 40 MILS ARO.
  2. CARRIER PIPE SHALL CONFORM TO PE 4710.
  3. CASING SEAL: Z-SEAL, LINK SEAL 6X12

UGI Utilities, Inc.  
1301 AIP Drive  
Middletown, PA 17057

FINAL DESIGN TICKETS  
20241932827  
20241933686  
20241933742

UGI CONTACT INFORMATION:  
PROJECT OWNER:  
EVAN BAUER  
717-415-7429  
PROJECT MANAGER:  
N/A



S CHARLOTTE ST LTIP  
GAS MAIN  
MANHEIM BOROUGH  
LANCASTER COUNTY, PA

FP NO.: B00XXXX / SO NO.: X000XXXX				
SIZE	MATERIAL	METHOD	WORK REQUEST NO.	SAP ERP NO.
XXXXXX	XXXXXX	XXXXXX	XXXXXX	XXXXXX

RR-2  
DETAILS  
Sheet 02 of 02