

April 8, 2026

Yousra Jamal Alaoui
PUC

RE: Docket Number: A-2026-3060616

Letter of Explanation of Revisions

Dear Yousra,

Please find the revised Secretarial Application for Docket number A-2026-3060616

1. Height of proposed cable was revised to show the height above the top of the rail.

Thank you for your consideration. We look forward to your favorable response.

Sincerely,

Chris Sloce

Chirs Sloce

**BEFORE
PENNSYLVANIA PUBLIC UTILITY COMMISSION**

In re: Application of Gigapower LLC for approval of the alteration of the crossing 266085R by the installation of fiber optic cable where Slocum St crosses above grade of the tracks of Luzerne & Susquehanna Railway, located in the Borough of Swoyersville in Luzerne County.

Docket number: A-2026-3060616

To Pennsylvania Public Utility Commission:

1. The name and address of applicant are:

GIGAPOWER, LLC (see local mailing address pg. 2)
311 S Akard St. – 21st Floor
Dallas, TX 75202

2. The name and address of applicant's attorney are:

Thomas Grace - CCO and Chief Counsel

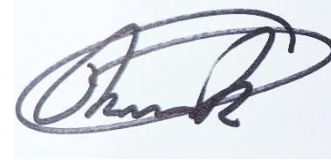
GIGAPOWER, LLC
311 S Akard St. – 21st Floor
Dallas, TX 75202

3. GIGAPOWER, LLC provides Optical Network Infrastructure for use by Internet Service Providers and other data transmission.
4. Adding a Figure-8 aerial conduit and fiber optic cable attached to the existing joint use pole (41.282113, -75.882797) 65' East from the crossing the Luzerne & Susquehanna Railroad (41.282304, -75.882890) at Slocum St and to the joint use pole (41.282367, -75.883042) 50' West from the crossing. The cable will pass above the railway.
5. The following public utilities who may be affected by or concerned with the proposed alteration of the crossing are Pennsylvania Power and Light, Verizon, Xfinity, Frontier, T-Mobile, Astound Broadband, Service Electric Cable TV. The following municipalities of Borough of Swoyersville who may be affected by or concerned with the proposed alteration of the crossing are the . The following property owners who may be affected by or concerned with the proposed alteration of the crossing are Luzerne & Susquehanna Railroad.
6. Estimated cost of construction not to exceed \$10,000 – Gigapower LLC. Is responsible for the installation, maintenance, and inspection of such facilities and will be the responsible for all associated costs related to the installation, maintenance, and inspection of such facilities.

7. The alteration is necessary or proper for the following reasons: To provide the residence of the Borough of Swoyersville with access to high quality fiber internet.

Wherefore, applicant prays your Honorable Commission to approve the application:

Rich Rehak Jr.
Director of Network Operations NEPA
GIGAPOWER, LLC
Po BOX 179
East Greenville, PA 18041



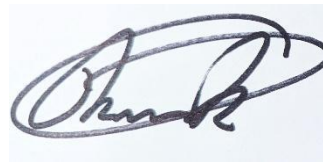
(Signature of Applicant)

§ 1.36. Verification.

- (a) Applications, petitions, formal complaints, motions and answers thereto containing an averment of fact not appearing of record in the action or containing a denial of fact shall be personally verified by a party thereto or by an authorized officer of the party if a corporation or association. Verification means a signed written statement of fact supported by oath or affirmation or made subject to the penalties of 18 Pa. C.S. §4904 (relating to unsworn falsification to authorities). If verification is required, notarization is not necessary.
- (b) The Verification form should comply substantially with the following:

VERIFICATION

I, Rich Rehak Jr. , hereby state that the facts above set forth are true and correct (or are true and correct to the best of my knowledge, information and belief) and that I expect to be able to prove the same at a hearing held in this matter. I understand that the statements herein are made subject to the penalties of 18 Pa. C.S. § 4904 (relating to unsworn falsification to authorities).



Date: Hgdtwct{'22, 2028

(Signature)

CERTIFICATE OF SERVICE

I hereby certify that I have this day served a true copy of the foregoing document upon the participants, listed below, in accordance with the requirements of § 1.54 (relating to service by participant).

Railroad:

Luzerne & Susquehanna Railway (LSX)
c/o R.J. Corman Railroad Group
info@rjcorman.com
Phone: 607 687 6992
1 Rutledge Dr
Pittston, PA 18640

PADOT: Jeremiah Gonzalo
jgonzalo@pa.gov
55 Keystone Industrial Park, Dunmore, PA 18512

Swoyersville Borough – 675 Main St, Swoyersville, PA 18704

PPL: Rana Souryal
rsouryal@pplweb.com
P.O. Box 25239, Lehigh Valley, PA 18002-5239

Verizon Pennsylvania Inc.: Deborah Barum
poleconduitadmin1@verizon.com, dgcavuto@ctdi.com
1026 Hay St., Wilkinsburg, PA 15221

North Penn Long Distance Corporation: Empire/North Penn Telephone
ospeng@etcnpt.com
34 Main Street, Prattsburgh, NY 14873

Comcast - Duryea: Americomm
carol@americomm-llc.com, heather@americomm-llc.com
21 State Ave (Suite 1), Carlisle, PA 17013

ION Holdco LLC: Sheena Wiater
scharney@firstlight.net, swiater@firstlight.net, smercier@firstlight.net, flf-licensing@firstlight.net,
rsitler@firstlight.net
7890 Lehigh Crossing, Victor, NY 14564

Teleport Communications America LLC: MCarlo Verdi III
cverdi@att.com, jay@trecgroup.com
900 Old Marple Rd., Springfield, PA 19064

CTSI, LLC: Mary Rodman
PA.Structure.Access@ftr.com
100 CTE Drive, Dallas, PA 18612

ZitoMedia / Zito West Holding, LLC: Kelly Ragosta
kelly.ragosta@zitomedia.com
PO Box 665 - 102 South Main Street, Coudersport, PA 16915

XO Communications, Inc.: Scott Dreiling
scott.j.dreiling@xo.com
1220 Broadcasting Road, Wyomissing, PA 19610

Chris Sloce

Dated this 22nd day of February, 2026

(Signature)

PLAN PREPARATION

OWNER:
GIGAPOWER
P.O. BOX 179
EAST GREENVILLE, PA 18041

NICOLE ATHERHOLT
DIRECTOR OF NETWORK OPERATIONS
NICOLE.ATHERHOLT@GIGAPOWER.COM

RICH REHAK
OUTSIDE PLANT SUBJECT MATTER
EXPERT
RICH.REHAK@GIGAPOWER.COM

DANIEL STELMACK
CONSTRUCTION LEAD - PA
DANIEL.STELMACK@GIGAPOWER.COM
570-589-5533

ENGINEERING FIRM:
4200 CORNING PLACE
CHARLOTTE, NC 28216

EDWIN ROGERS
PROGRAM MANAGER
ROGERSE2@CORNING.COM

EDDIE LOWE
SENIOR OUTSIDE PLANT ENGINEER
LOWEED@CORNING.COM

PERMIT DRAWN BY:
CHRIS SLOCE
ENGINEER/TECH
SLOCEC3@CORNING.COM

PROJECT INFORMATION

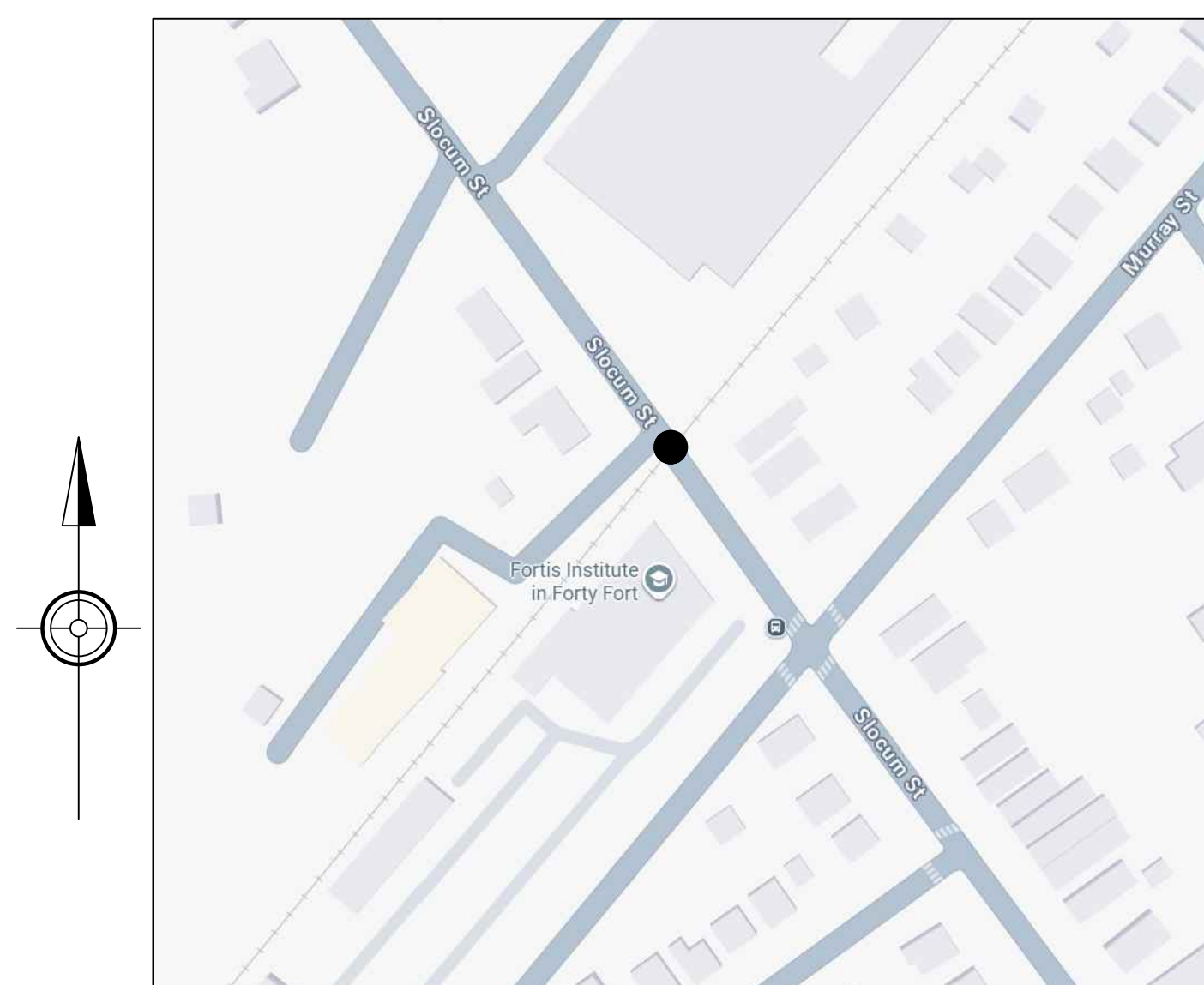
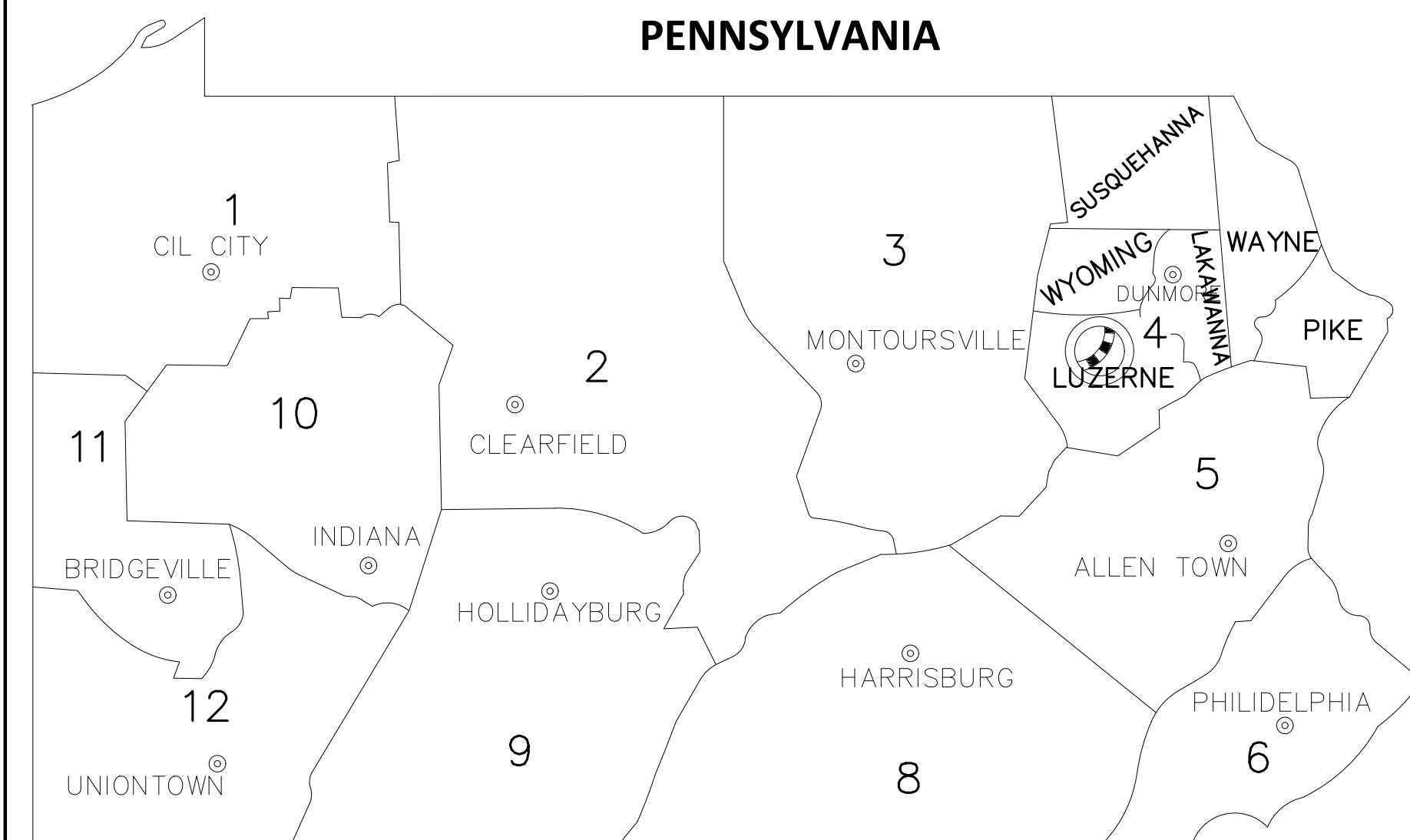
MASTER PROJECT: GIGAPOWER - NEON-LIMA
PROJECT NAME: WB301-RT3-SEC13-HANL
CORNING PROJECT NUMBER: CORNING NUMBER P-#####
UGI APPLICATION NUMBER: BBF-RT3-SEC 5 ROLT [2.0]

DISTRICT	COUNTY	BOROUGH	ROUTE	SEGMENT	OFFSET	TOTAL SHEETS
4	40	SWOYERSVILLE BOROUGH	1017 (SLOCUM ST)	0010	1750	11
	40	SWOYERSVILLE BOROUGH	1017 (SLOCUM ST)	0010	N/A	

RIGHT-OF-WAY OCCUPANCY PERMIT
166 SLOCUM ST
SWOYERSVILLE BOROUGH, (LUZERNE), PENNSYLVANIA
LENGTH 115' FT
DATE: 4/8/2026

CROSSING #266085R
RAILROAD SUBDIVISION: LEHIGH
RAILROAD DIVISION OR REGION: ATLANTIC
NEAREST RR TIMETABLE STATION: KINGSTON
RR MILEPOST: 0149.23
MAXIMUM TIMETABLE SPEED: 10MPH

SHEET INDEX	
001	COVER SHEET
002	NOTES
003	LEGEND
004	PLAN OVERVIEW
005	ELEVATION VIEW 2
TYPICAL DETAILS	
601	POLE BONDING & GROUNDING
602	RISERS
603	SUSPENSION CLAMPS DETAILS
604	DOWN GUY DETAILS
605	POLE SLACK DETAILS



LOCATION MAP

- STATE HWY _____
- BOROUGH STREETS - - - - -
- WATER WAY _____
- PROJECT LIMITS - - - - -

LIST OF PUBLIC UTILITIES

WATER & WASTEWATER
PENNSYLVANIA AMERICAN WATER (800) 565-7292
LACKAWANNA RIVER BASIN SEWER AUTH (570) 489-7563
WYOMING VALLEY SANITARY AUTH (570) 825-3416

ELECTRICAL
PPL COMPANY (800) 342-5775
BLAKELY ELEC. (570) 383-3340
UGI UTILITIES (800) 276-2722

GAS
UGI UTILITIES (800) 276-2722

COMMUNICATIONS
COMCAST - DURYEA
FRONTIER
LOOP INTERNET
SERVICE ELECTRIC
VERIZON PENNSYLVANIA

MUNICIPALITIES (LACKAWANNA)
ARCHBALD (570) 876-1800
BLAKELY (570)-383-3340
DUNMORE (570) 343-7611
JESSUP (570) 489-0411
OLYPHANT (570) 489-2135
THROOP (570) 489-8311
ROADS & BRIDGES (570) 496-7733

MUNICIPALITIES (LUZERNE)
HANOVER TWP (570) 825-8522
KINGSTON (570) 288-4576
NANTICOKE (570) 735-2800
PITTSTON (570) 654-4601
SUGAR NOTCH (570) 822-9282
WILKES-BARRE (570) 208-4635
ROAD & BRIDGES (570) 825-1600

REV	DATE	DESCRIPTION
0		ORIGINAL

CALL BEFORE YOU DIG



PENNSYLVANIA LAW REQUIRES 3 TO 10 WORKING DAYS NOTICE FOR CONSTRUCTION PHASE BASED ON PROJECT COMPLEXITY AND 10 WORKING DAYS IN DESIGN STAGE - STOP CALL 1-800-242-1776

THE PA ONE CALL NOTIFICATIONS PERFORMED DURING PROJECT DEVELOPMENT ARE AS FOLLOWS:

PRELIMINARY DESIGN SERIAL NO.:N/A
ON: N/A
FOR: WB301-RT3-SEC13-HANL

DESIGN DESIGNATION
HIGHWAY CLASSIFICATION FREE ACCESS
DESIGN SPEED 25 MPH
PAVEMENT WIDTH 50'
SHOULDER WIDTH N/A'

PLOT DATE: 4/8/2026. ORIGINAL SIZE: ANSI D (34 X 22 INCHES)

GENERAL PERMIT NOTES:

1. THE EXISTING SPEED LIMIT ON 1017 (SLOCUM ST) IS 25 M.P.H
2. THE RIGHT-OF-WAY IS 50'.
3. ALL WORK IN PA STATE HIGHWAY RIGHT-OF WAY IS TO BE PERFORMED CONSISTENT WITH THE FOLLOWING:
 - 3.1. PENNDOT PUBLICATION 13M, DESIGN MANUAL PART 2 – HIGHWAY DESIGN
 - 3.2. PENNDOT PUBLICATION NO. 34, APPROVED AGGREGATE PRODUCERS (BULLETIN 14)
 - 3.3. PENNDOT PUBLICATION NO. 35, APPROVED CONSTRUCTION MATERIALS (BULLETIN 15)
 - 3.4. PENNDOT PUBLICATION NO. 41, PRODUCERS OF BITUMINOUS MATERIALS (BULLETIN 41)
 - 3.5. PENNDOT PUBLICATION NO. 42, PRODUCERS OF READY-MIX CONCRETE (BULLETIN 42)
 - 3.6. PENNDOT PUBLICATION NO. 46, TRAFFIC ENGINEERING MANUAL
 - 3.7. PENNDOT PUBLICATION NO. 72M, STANDARDS FOR ROADWAY CONSTRUCTION
 - 3.8. PENNDOT PUBLICATION NO. 111, PAVEMENT MARKINGS AND SIGNING STANDARDS
 - 3.9. PENNDOT PUBLICATION NO. 212, OFFICIAL TRAFFIC CONTROL DEVICES
 - 3.10. PENNDOT PUBLICATION NO. 213, TEMPORARY TRAFFIC CONTROL GUIDELINES
 - 3.11. PENNDOT PUBLICATION NO. 408, SPECIFICATIONS
4. PA STATE HIGHWAY RIGHT-OF-WAY MAY NOT BE USED FOR PARKING.
5. PERMITTEE AND PERMITTEE'S CONTRACTOR IS RESPONSIBLE FOR MAINTENANCE OF ALL AUTHORIZED STRUCTURES, FACILITIES, AND DRAINAGE.
6. PERMITTEE AND PERMITTEE'S CONTRACTOR IS RESPONSIBLE FOR MAINTENANCE OF ALL AUTHORIZED SIGNS AND PAVEMENT MARKINGS.
7. THREE TO TEN WORKING DAYS PRIOR TO EXCAVATION BASED ON THE COMPLEXITY OF THE PROJECT, THE CONTRACTOR MUST CONTACT THE PA ONE CALL SYSTEM, INC., PHONE 1-800-242-1776. SERIAL NO. () FOR THE MUNICIPALITY OF SWOYERSVILLE BOROUGH. ADDITIONAL INFORMATION IS AVAILABLE AT <https://www.pa1call.org/pa811/Public/>.
8. THE CONTRACTOR IS REQUIRED TO NOTIFY THE DEPARTMENT AND SUBMIT AN ALLEGED VIOLATION REPORT (AVR) TO THE PA PUBLIC UTILITY COMMISSION THROUGH THE PA ONE CALL SYSTEM, www.pa1call.org WITHIN TEN (10) BUSINESS DAYS AFTER A UTILITY IS STRUCK, DAMAGED, OR PREVIOUS DAMAGE IS DISCOVERED AS REQUIRED BY PENNSYLVANIA'S UNDERGROUND UTILITY LINE PROTECTION LAW ACT 50 (P.L.852, NO. 287 AMENDED OCT. 30, 2017).
9. IF A TRAFFIC SIGNAL IS WITHIN 500 FEET OF THE SITE, CALL THE DISTRICT TRAFFIC ENGINEER AT LEAST 3 DAYS PRIOR TO THE START OF WORK.
10. ALL PROPOSED PEDESTRIAN FACILITIES REFLECTED ON THESE PLANS, INCLUDING THOSE THAT ARE OUTSIDE OF PENNDOT LEGAL RIGHT-OF-WAY, SHALL BE CONSTRUCTED TO COMPLY WITH THE REQUIREMENTS OF THE U.S. ACCESS BOARD, PUBLIC RIGHT OF WAY ACCESSIBILITY GUIDELINES OF BUILDINGS OF THE ACCESSIBILITY OF BUILDINGS AND FACILITIES (ADAAG, PENNDOT DESIGN MANUAL PART 2, CHAPTER 6, AND PENNDOT STANDARDS FOR ROADWAY CONSTRUCTION (PENNDOT PUBLICATION 7M, RC-67M) PROVIDE GUIDANCE ON ADA ACCESSIBLE DESIGN FOR PEDESTRIAN FACILITIES AND CAN BE UTILIZED FOR REFERENCE.
11. CONSTRUCT ALL PROPOSED PEDESTRIAN FACILITIES ON THESE PLANS TO COMPLY WITH THE AMERICANS WITH DISABILITIES ACT, PUBLIC RIGHT-OF-WAY ACCESSIBILITY GUIDELINES (PROWAG), AND THE 2010 ADA STANDARDS.
12. IT IS THE RESPONSIBILITY OF THE PERMITTEE AND PERMITTEE'S CONTRACTOR TO REMOVE AND DEBRIS AND FLUSH OUT ALL EXISTING AND NEW STORM DRAINAGE FACILITIES WITHIN THE PROJECT LIMITS AT THE COMPLETION OF CONSTRUCTION.

RESTORATION NOTES:

1. BACKFILL COMPACTION TESTING DOCUMENTATION IS REQUIRED. (PENNDOT PUBLICATION 282, CHAPTER 5.1 PAGE 160.)
2. OPENINGS SHALL BE BACKFILLED BY THE CONTRACTOR IN ACCORDANCE WITH DEPARTMENTS STANDARDS SPECIFICATIONS AND DETAILS. (67 PA CODE, CHAPTER 459.8(G)).
3. ALL TESTS PITS IN THE PAVEMENT SHALL FOLLOW RESTORATION FOR FLEXIBLE PAVEMENT.
4. PENNDOT INSPECTOR IS REQUIRED DURING TRENCH BACKFILL IN PAVEMENT, SIDEWALK, AND SHOULDER (PENNDOT PUBLICATION 282, CHAPTER 5.2, PAGE NO. 164)
5. CONTRACTOR SHALL RESTORE AREAS DISTURBED BY CONSTRUCTION OPERATIONS TO THEIR ORIGINAL CONDITION EXCEPT FOR THE REPLACEMENT OF TREES UNLESS OTHERWISE INDICATED.
6. TREES SHALL BE TRIMMED OR REMOVED AS REQUIRED FOR THE INSTALLATION OF UTILITY LINES. TREES THAT DO NOT REQUIRE REMOVAL SHALL BE PROTECTED FROM CONSTRUCTION OPERATIONS.

MAINTENANCE AND PROTECTION OF TRAFFIC (MPT) NOTES:

1. THIS WORK CONSISTS OF MAINTENANCE AND PROTECTION OF TRAFFIC AND THE PROTECTION OF THE PUBLIC WHEN APPROACHING AND DEPARTING THE CONSTRUCTION AREA AND WITHIN THE LIMITS OF CONSTRUCTION.
2. FURNISH, ERECT, PLACE AND MAINTAIN TRAFFIC CONTROL SIGNS AND DEVICES. MAINTAIN TRAFFIC DURING HOURS OF CONSTRUCTION AND ALL OTHER TIMES CONSISTENT WITH THE METHODS INDICATED ON THESE DRAWINGS AND THE FOLLOWING:
 - 2.1. PENNDOT PUBLICATION 35, APPROVED CONSTRUCTION MATERIALS (BULLETIN 15)
 - 2.2. PENNDOT PUBLICATION 46, TRAFFIC ENGINEERING MANUAL
 - 2.3. PENNDOT PUBLICATION 72M, STANDARDS FOR ROADWAY CONSTRUCTION
 - 2.4. PENNDOT PUBLICATION 111, PAVEMENT MARKINGS AND SIGNAGE STANDARDS
 - 2.5. PENNDOT PUBLICATION 212, OFFICIAL TRAFFIC CONTROL DEVICES
 - 2.6. PENNDOT PUBLICATION 213, TEMPORARY TRAFFIC CONTROL GUIDELINES
 - 2.7. PENNDOT PUBLICATION 236, HANDBOOK OF APPROVED DESIGNS
 - 2.8. PENNDOT PUBLICATION 408, SPECIFICATIONS
 - 2.9. MUTCO, CURRENT EDITION
3. REMOVE THESE DEVICES IMMEDIATELY AFTER UPON COMPLETION OF THE WORK, PENNDOT WILL REMOVE ANY TRAFFIC CONTROL DEVICES ERECTED BY DEPARTMENT FORCES.
4. PERMITTEE MUST ARRANGE FOR INSPECTION OF ALL DEVICES PRIOR TO START OF WORK.
5. COVER OR REMOVE ALL CONFLICTING SIGNS AND ERADICATE ALL CONFLICTING PAVEMENT MARKINGS.
6. MOUNT ALL LONG-TERM ADVANCED WARNING SIGNS ON TYPE III BARRICADES UNLESS OTHERWISE NOTED OR INSTRUCTED BY DISTRICT OFFICE.
7. ALL SIGNS AND DEVICES TO BE MAINTAINED IN NEW OR LIKE NEW CONDITION.
8. DRIVEWAYS WILL BE KEPT ACCESSIBLE AT ALL TIMES, LOCATE ALL SIGNS SO THAT SIGHT DISTANCE WILL NOT BE OBSTRUCTED AT DRIVEWAYS AND LOCAL ROADS.
9. ALL CHANNELIZING DEVICES, BARRICADES, AND SIGNS SHALL HAVE TYPE III OR BETTER PRISMATIC RETROREFLECTIVE SHEETING. SHEETING SHALL BE APPROVED AND LISTED IN PENNDOT PUBLICATION 35 (BULLETIN 15).
10. NO TRAFFIC RESTRICTIONS OR LANE CLOSURES ARE PERMITTED BETWEEN 6:00 AM AND 9:00 AM AND BETWEEN 3:00 PM AND 6:00 PM MONDAYS THROUGH FRIDAYS OR ON LEGAL HOLIDAYS AND WEEKENDS ASSOCIATED WITH LEGAL HOLIDAYS. ALL RESTRICTIONS AND CLOSURES ARE TO BE REMOVED BY NOON ON THE DAY PRIOR TO A LEGAL HOLIDAY.
11. PERMITTEE SHALL NOTIFY LOCAL EMERGENCY AUTHORITIES (E.G., POLICE, FIRE, MEDICAL,) AFFECTED BUSINESSES, SCHOOL DISTRICTS, THE GENERAL PUBLIC, THE DISTRICT PERMIT MANAGER AND THE DISTRICT AREAS COORDINATOR AT LEAST FOURTEEN (14) DAYS PRIOR TO SIGNIFICANT TRAFFIC IMPACTS (E.G., LATERAL WIDTH RESTRICTIONS LESS THAN 16 FEET, DETOURS).
12. MAINTENANCE OF AND PROTECTION OF TRAFFIC DURING CONSTRUCTION SHALL BE IN ACCORDANCE WITH THE APPLICABLE PATA DRAWINGS 107. IN THE CURRENT PENNDOT PUBLICATION 213, "TEMPORARY TRAFFIC CONTROL GUIDELINES."
13. DROP OFFS CREATED BY CONSTRUCTION OPERATIONS SHALL BE TREATED CONSISTENT WITH PUBLICATION 408, SECTION 901.31J).
14. REMOVE ALL SHORT TERM WORK ZONE TRAFFIC CONTROL SIGNING UPON COMPLETION OF THAT DAY'S WORK PERIOD.
15. RESTRICTING TRAFFIC FLOW WITHIN THE WORK AREA SHALL BE MINIMIZED TO PREVENT TRAFFIC CONGESTION AND UNSAFE TRAFFIC CONDITIONS.
16. NOTIFY THE LOCAL MUNICIPALITY WHERE SIGNALIZED INTERSECTIONS FALL WITHIN THE WORK ZONE. DO NOT FLAG A SIGNALIZED INTERSECTION WITHOUT THE MUNICIPALITY PLACING THE SIGNAL ON FLASH.
17. THE CONTRACTOR SHALL COMPLY WITH ACT 229 OF DECEMBER 2002 DURING CONSTRUCTION ACTIVITIES WITHIN THE PENNDOT RIGHT-OF-WAY.
18. ALL FLAGGERS TO WEAR YELLOW/GREEN ANSI II APPAREL AND LEGGINGS. ANSI III APPAREL IS REQUIRED DURING HOURS OF DARKNESS FOR ALL HIGHWAY WORKERS.

PROJECT NAME: WB301-RT3-SEC13-HANL

SHEET NAME: GENERAL NOTES

DATE: 22 February 2026

SHT NO. 002

LINES

UTILITIES

SYMBOLS

-PROPOSED

ABBREVIATIONS

ABBREVIATIONS

	FIBER OPTIC - AERIAL
	FIBER OPTIC - DIRECT BURIED
	FIBER OPTIC - PLACED IN EXISTING CONDUIT
	FIBER OPTIC - SLACK SPAN
	FIBER OPTIC - OVERHEAD GUY
	FIBER OPTIC - POLE TO POLE GUY
	CONDUIT

-EXISTING

	CABLE TV - AERIAL
	CABLE TV - UNDERGROUND
	ELECTRIC- AERIAL
	ELECTRIC- UNDERGROUND
	TELEPHONE - AERIAL
	TELEPHONE - UNDERGROUND
	WATER
	SANITARY SEWER
	STORM WATER
	GAS

OTHER

	RIGHT-OF-WAY
	CENTER LINE OF ROAD
	EDGE OF PAVEMENT
	WATER WAY
	GUIDE RAIL
	MUNICIPAL BOUNDARY

	UTILITY POLE - CUSTOMER - OWNED
	DOWN GUY - ANCHOR
	DOWN GUY - SIDEWALK
	HANDHOLE - FIBER OPTIC
	CORE BORE, UTILITY IDENTIFICATION
	EXCAVATION

-EXISTING

	UTILITY POLE
	HANDHOLE - TELEPHONE
	HANDHOLE - CABLE TV
	HANDHOLE - ELECTRIC
	HANDHOLE - UNKNOWN
	STORM WATER GRATE

	MANHOLE - TELEPHONE
	MANHOLE - CABLE TV
	MANHOLE - ELECTRIC
	MANHOLE - SANITATION
	MANHOLE - WATER
	MANHOLE - UNKNOWN

	METER/VALVE - GAS
	FIRE HYDRANT
	TRAFFIC SIGNAL
	TRAFFIC SIGN

	RAILROAD CROSSING - SIGN
	RAILROAD CROSSING - SIGNAL
	RAILROAD CROSSING - GATE

	BENCHMARK
--	-----------

	CULVERT
--	---------

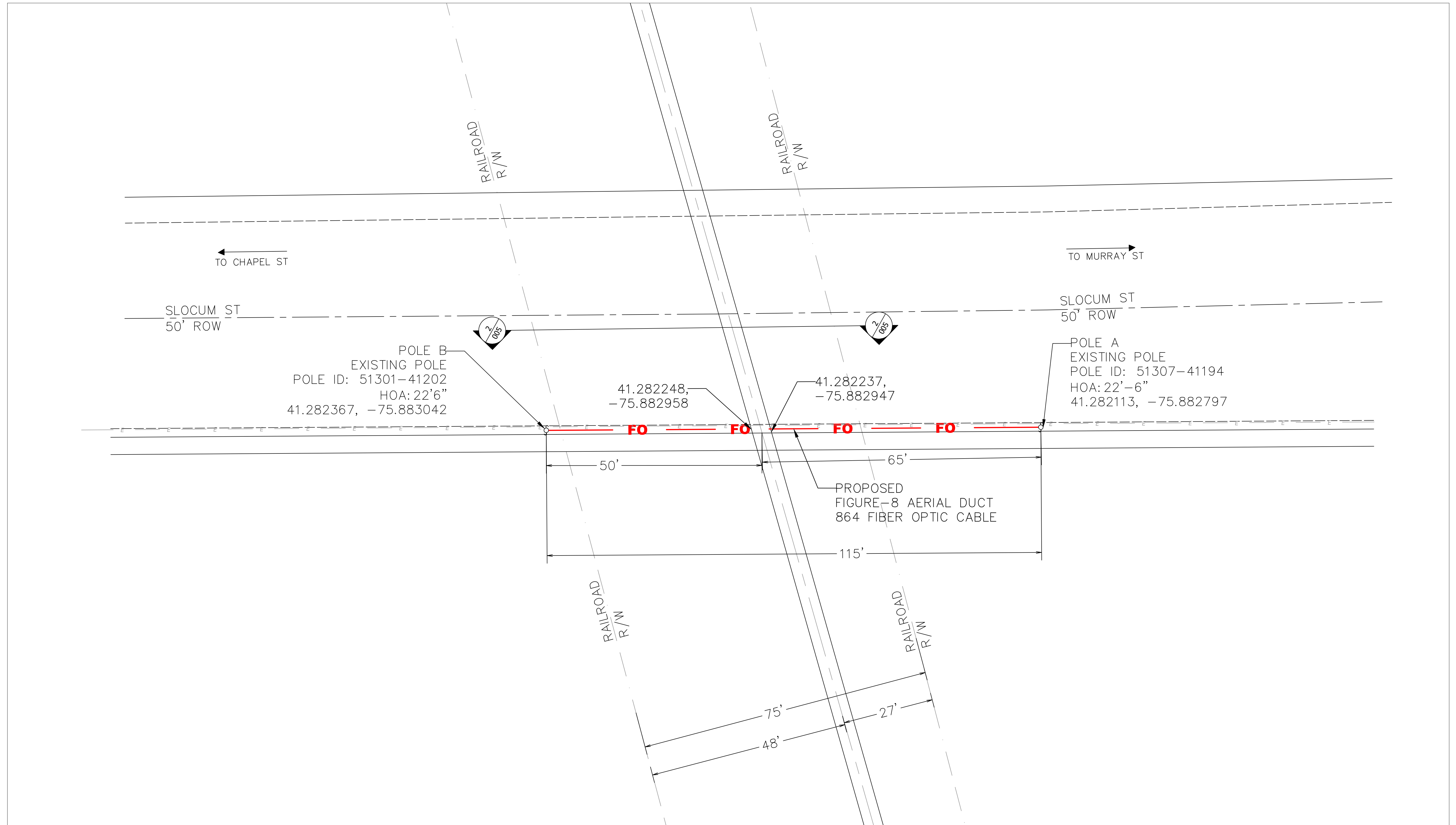
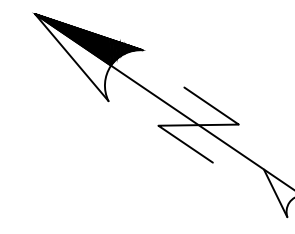
	BRIDGE
--	--------

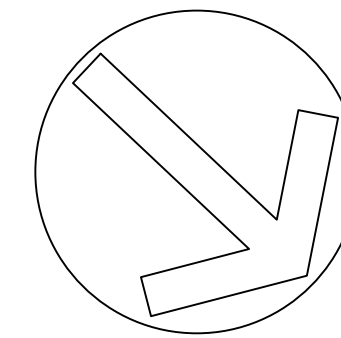
ABANDONED	ABD	LINEAR FOOT	LT
ASPHALT	ASPH	LOW POINT OF SAG	LOP
AVENUE	AVE	MANHOLE	MH
BEARING	BRG	MILES PER HOUR	MPH
BENCH MARK	BM	MONUMENT	MON
BITUMINOUS	BIT	OFFSET	OFF
BLACK	BLK	ORANGE	ORN
BOULEVARD	BLVD	OUTSIDE DIAMETER	OD
BRIDGE OCCUPANCY LICENSE	BOL	PAVEMENT	PAV'T
CAST IRON PIPE	CIP	PERMANENT	PERM
CENTERLINE	CL	POINT	PT
CONCRETE PIPE	CP	POWER POLE	PP
CONDUIT	COND	PROJECT	PROJ
CONTROL POINT	CTP	PROPERTY LINE	PL
COORDINATE	COORD	RAILWAY	RW
CORRUGATED METAL PIPE	CMP	RAILROAD	RR
COUNTY	CO	REINFORCED CONCRETE PIPE	RCP
DEGREE	DEG OR °	REVISION	REV
DIAMETER	DIA OR Ø	RIGHT-OF-WAY	R/W
DRIVE	DR	ROAD	RD
EDGE OF CONCRETE	EC	ROUTE	RTE
EDGE OF PAVEMENT	EOP	SANITARY SEWER	SAN S
ELEVATION	ELEV	SEGMENT	SEG
EXISTING	EXIST	SHEET	SHT
FEET	FT OR '	SHOULDER	SHLDR
FIBER OPTIC	FO	SIDEWALK	SDWK
FIBER OPTIC CABLE	FOC	SOUTHERN YELLOW PINE	SYP
FIGURE	FIG	STANDARD	STD
FINISHED GRADE	FG	STATE ROUTE	SR
FIRE HYDRANT	FH	STATION	STA
FOOT	FT OR '	STREET	ST
GENERAL	GENL	STEEL	STL
GUIDE RAIL	GR	SUBSURFACE UTILITY ENGINEERING	SUE
HANDHOLE	HH	TELEPHONE POLE	TP
HEIGHT OF ATTACHMENT	HOA	TEMPORARY	TEMP
HIGHWAY	HWY	TEST PIT	TP
HIGHWAY OCCUPANCY PERMIT	HOP	TOP OF CURB	TC
HORIZONTAL	HOR	TOP OF RAIL	TR
HORIZONTAL DIRECTIONAL DRILL	HDD	TYPICAL	TYP
INCH	IN OR "	VARIABLE	VAR
INSIDE DIAMETER	ID	VERTICAL	VERT
IRON PIPE	IP	WALK	WK
LENGTH	LGTH	WORK ZONE TRAFFIC CONTROL	WZTC
LIMITED ACCESS	LA		

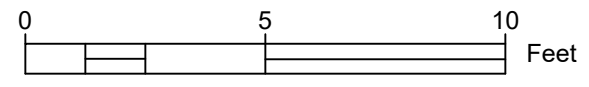
LOCATION DATA				
DISTRICT	COUNTY	ROUTE	SEGMENT	OFFSET
4	40	1017 (SLOCUM ST)	0010	1750
PROJECT NAME:		WB301-RT3-SEC13-HANL		
ORIGINAL DATE:		22 February 2026		
DRAWING NAME:		Plan View		
DRAWING SCALE:				

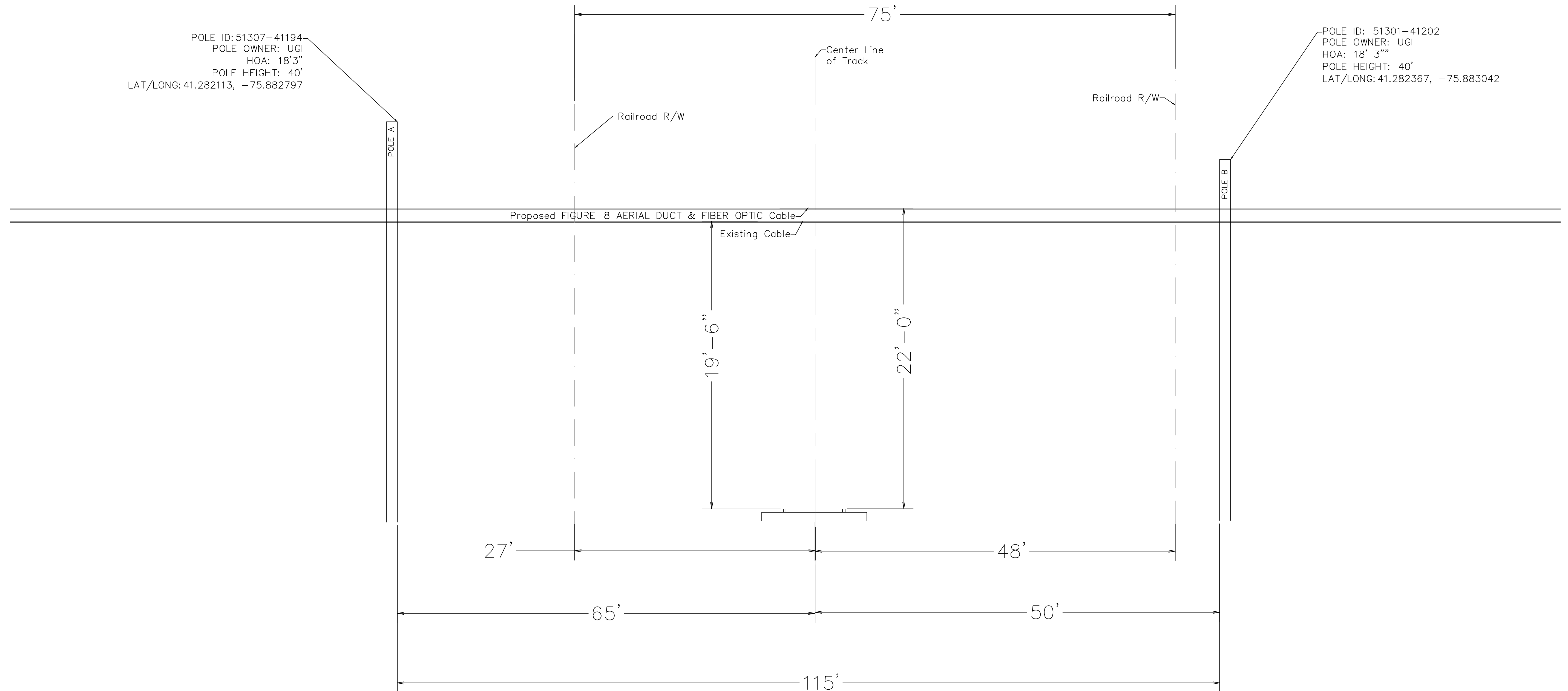
SHEET NO.

004 OF 11

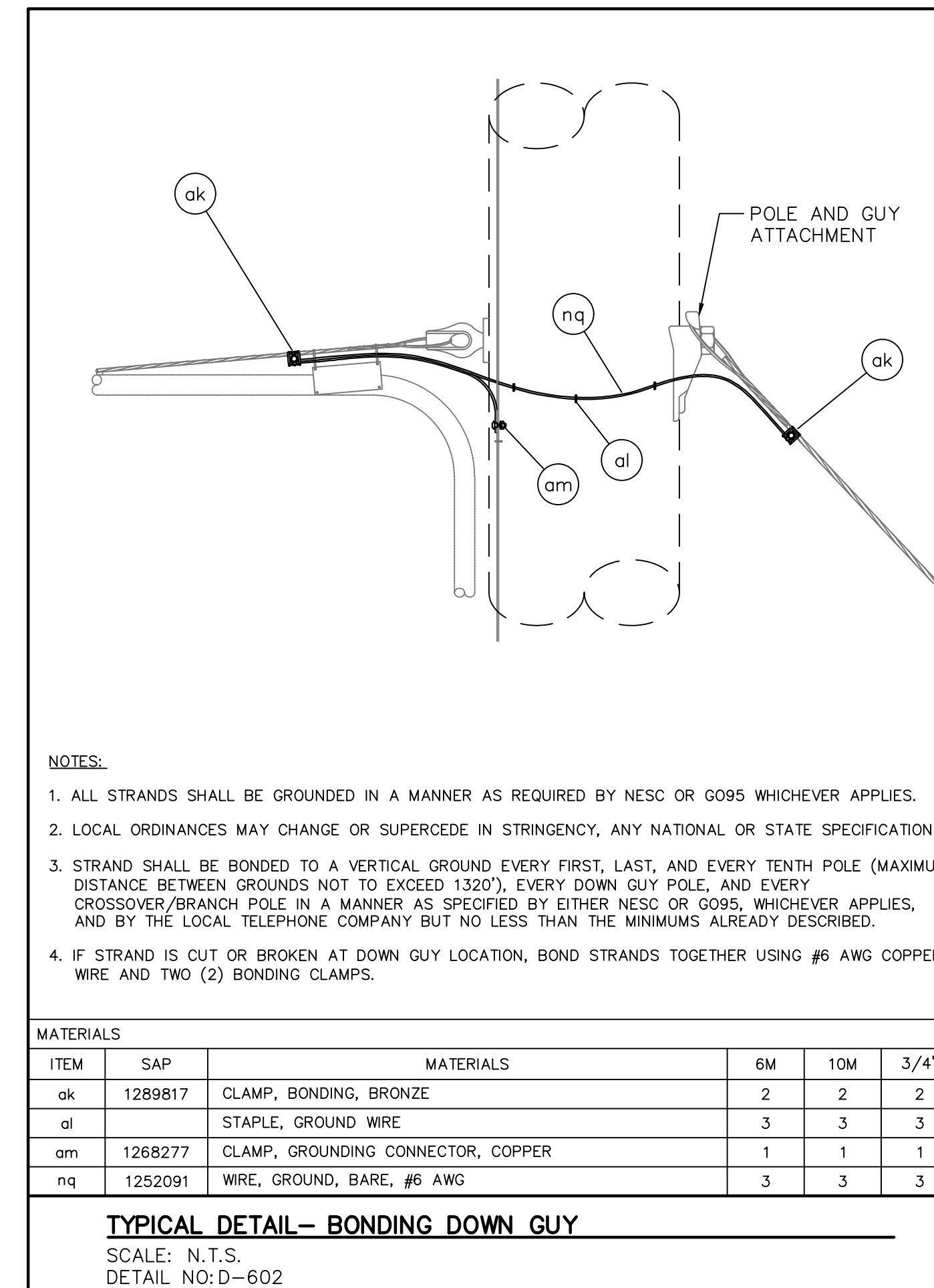
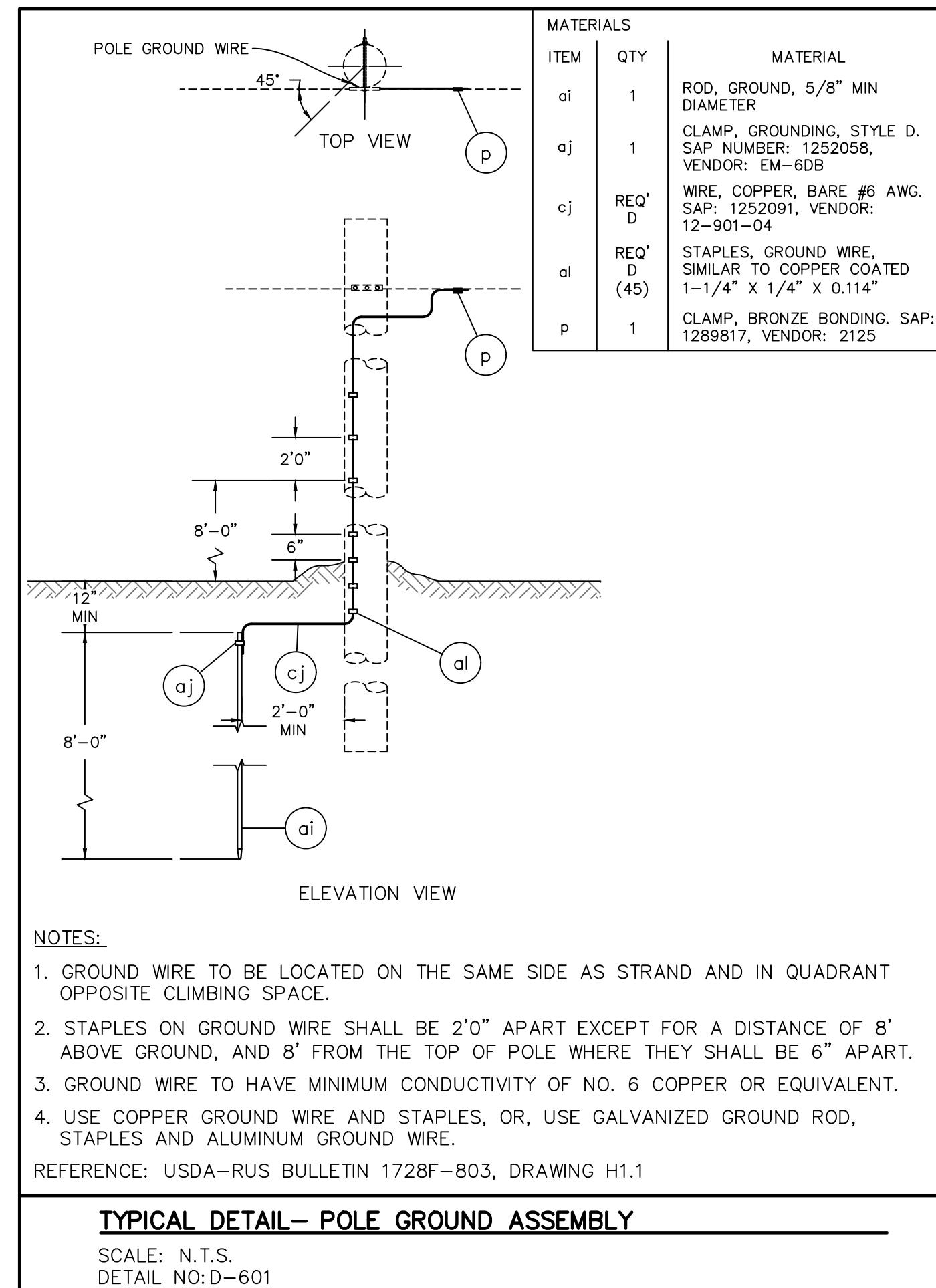


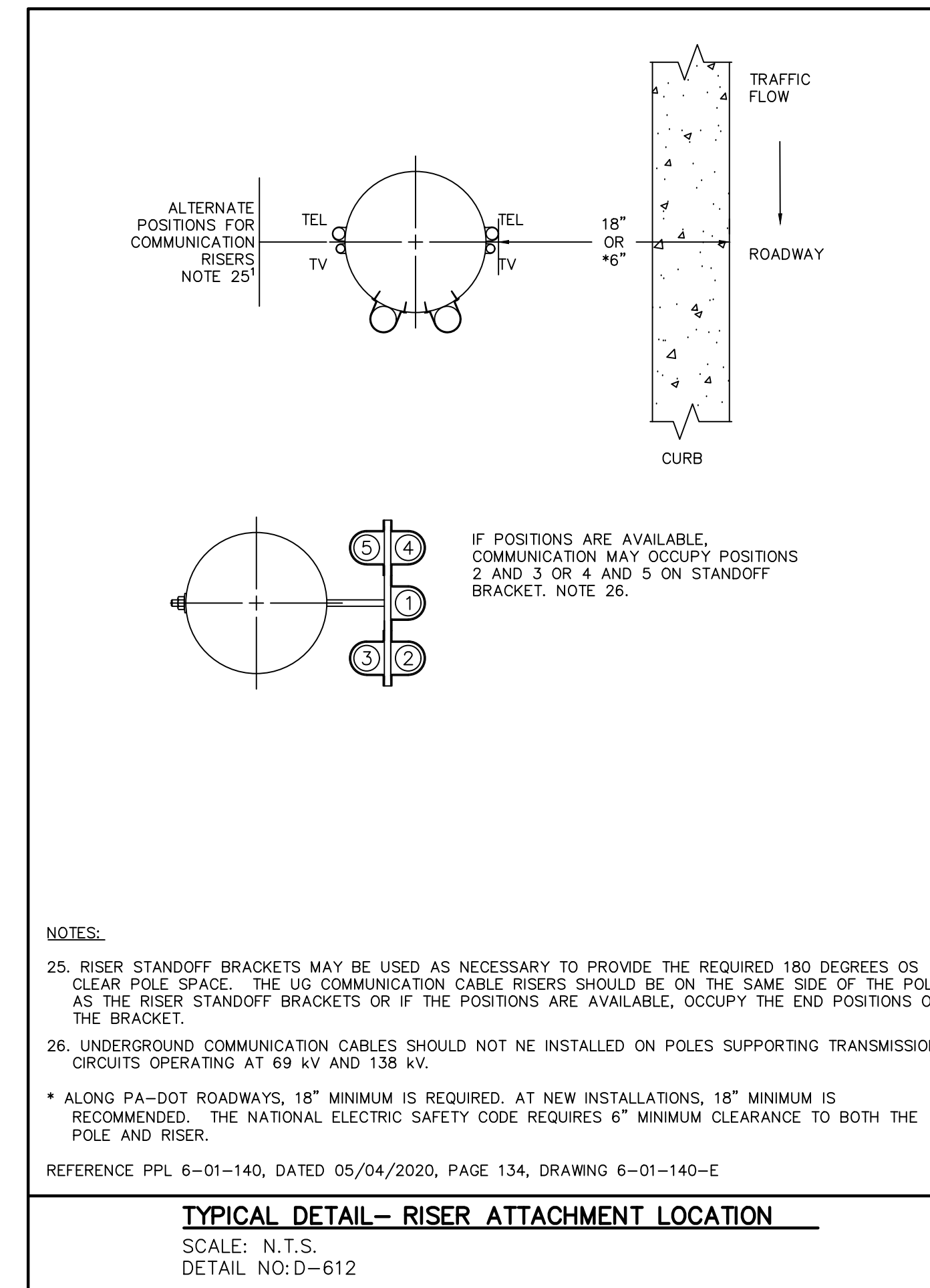
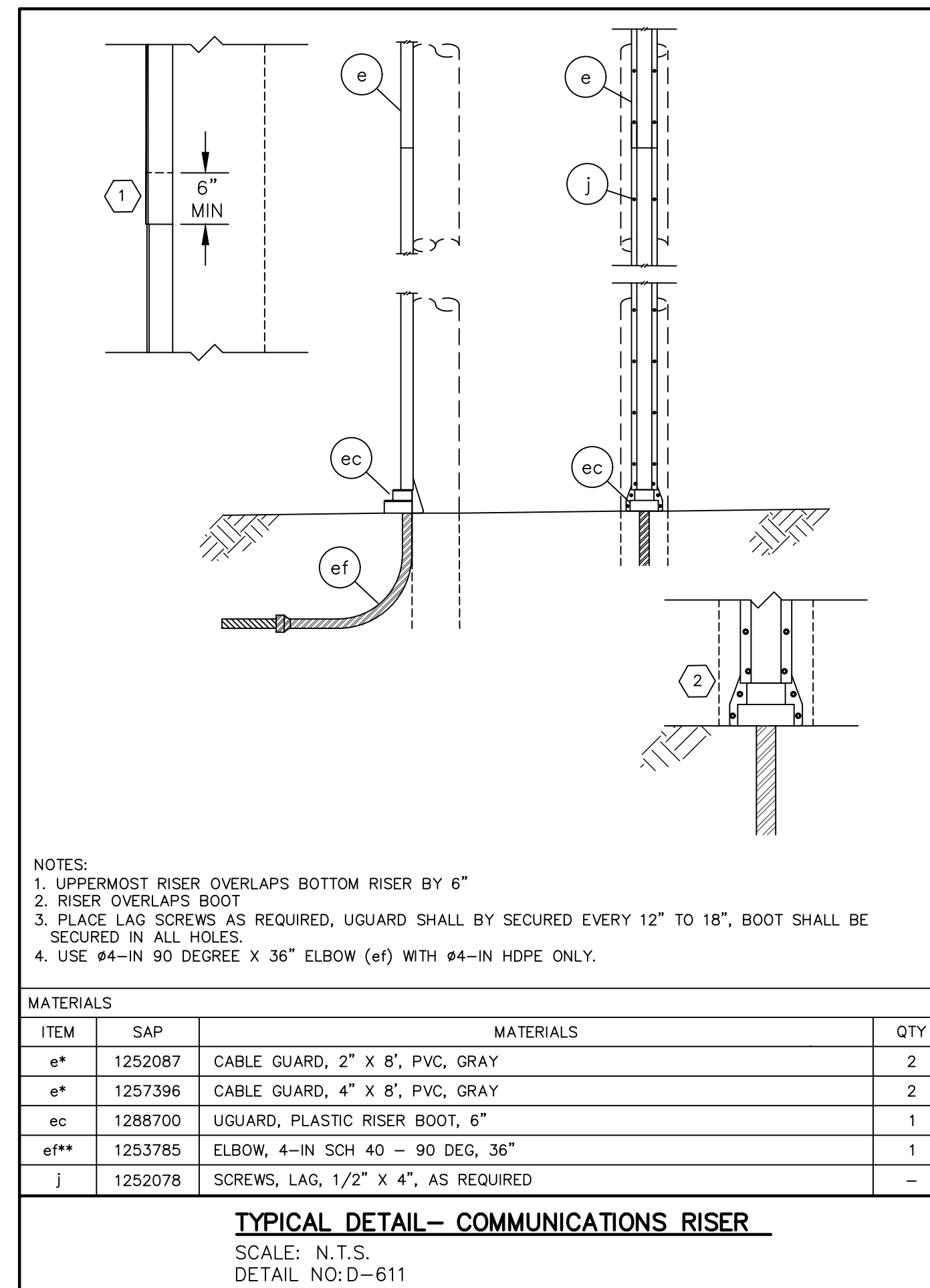


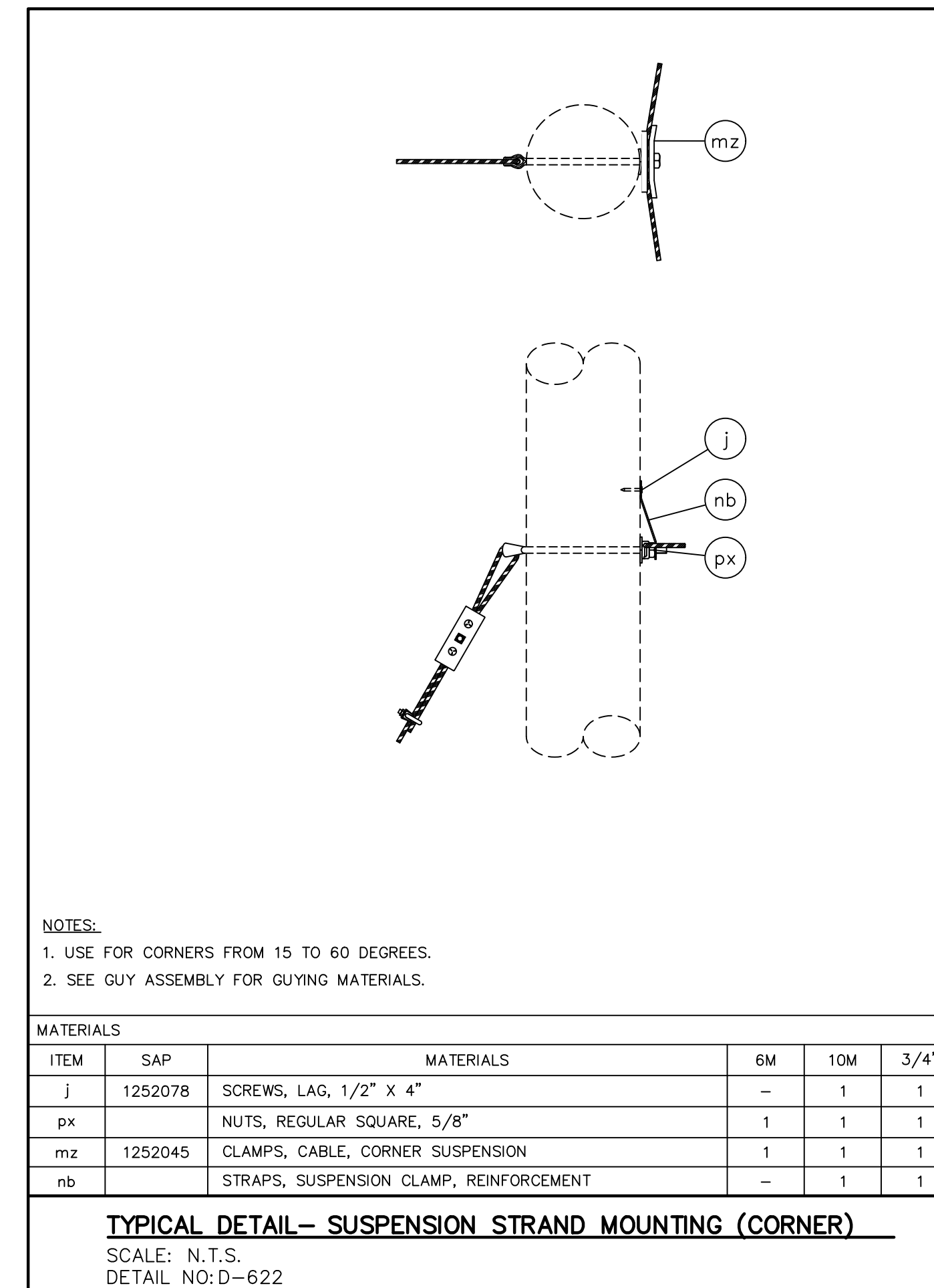
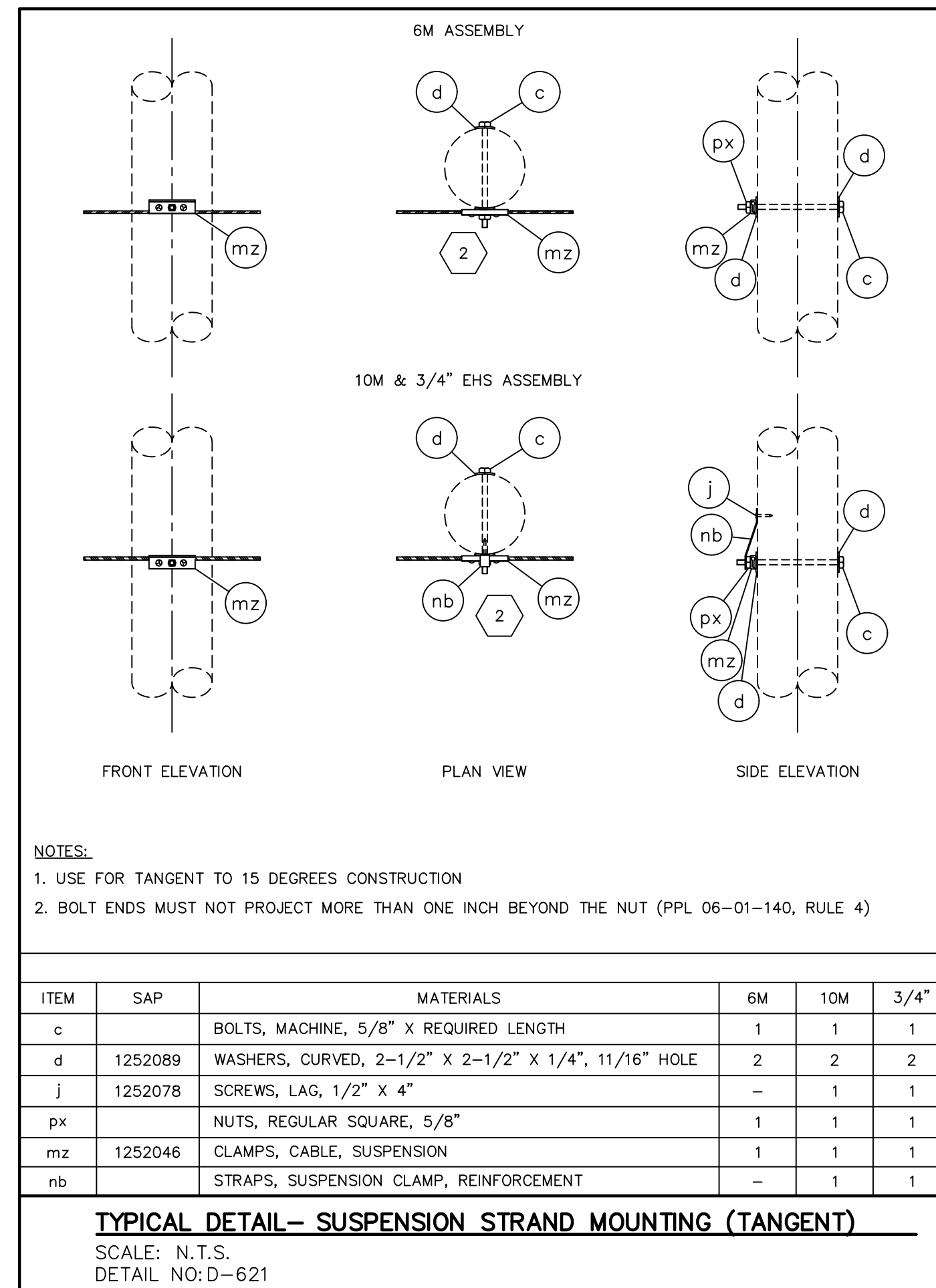
LOCATION DATA					SHEET NO.
DISTRICT	COUNTY	ROUTE	SEGMENT	OFFSET	
4	40	1017 (SLOCUM ST)	0010	1750	005 OF 11
PROJECT NAME: WB301-RT3-SEC13-HANL					
ORIGINAL DATE: 22 February 2026					
DRAWING NAME: Section View(s)					
DRAWING SCALE:  Feet					

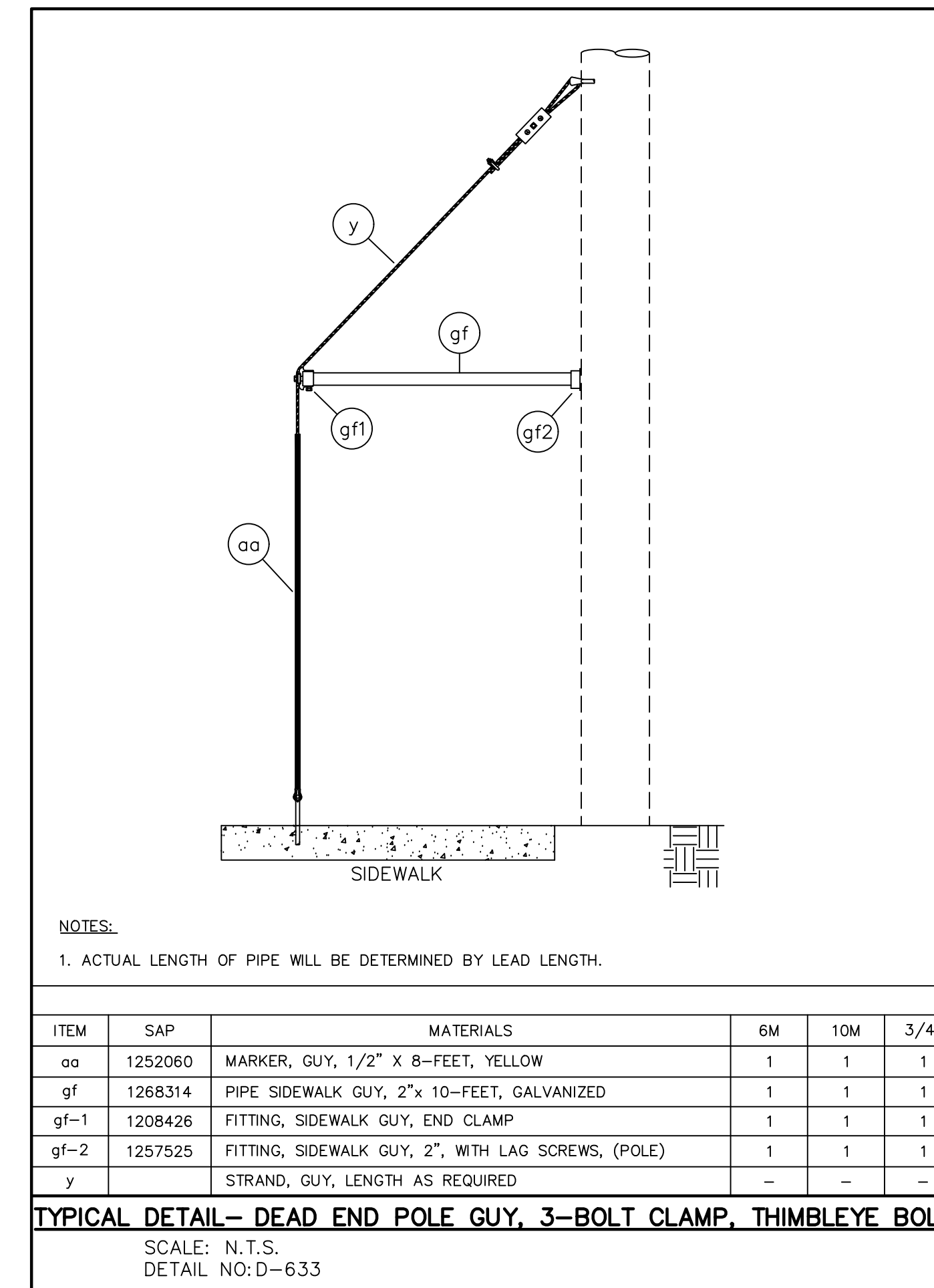
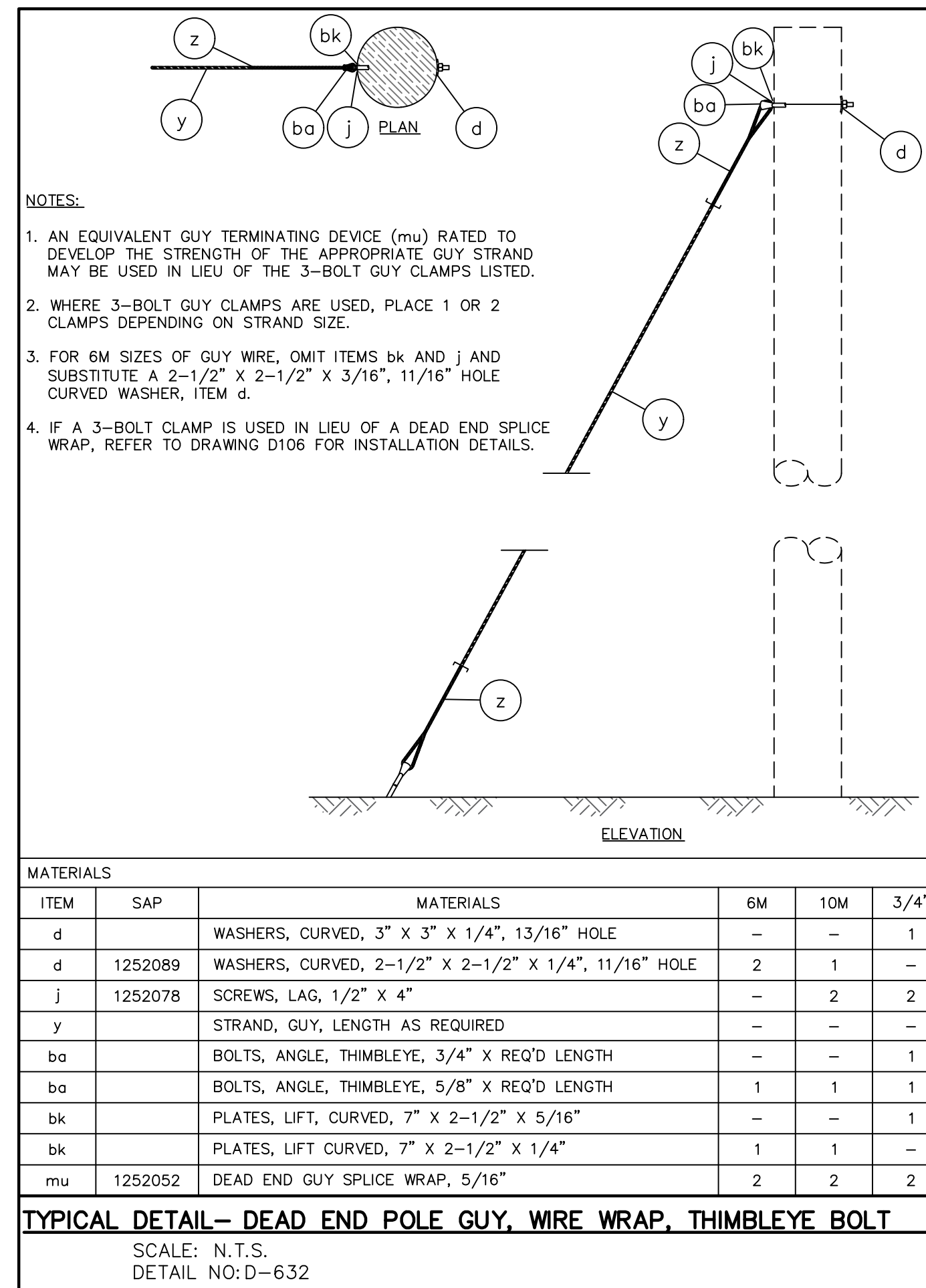
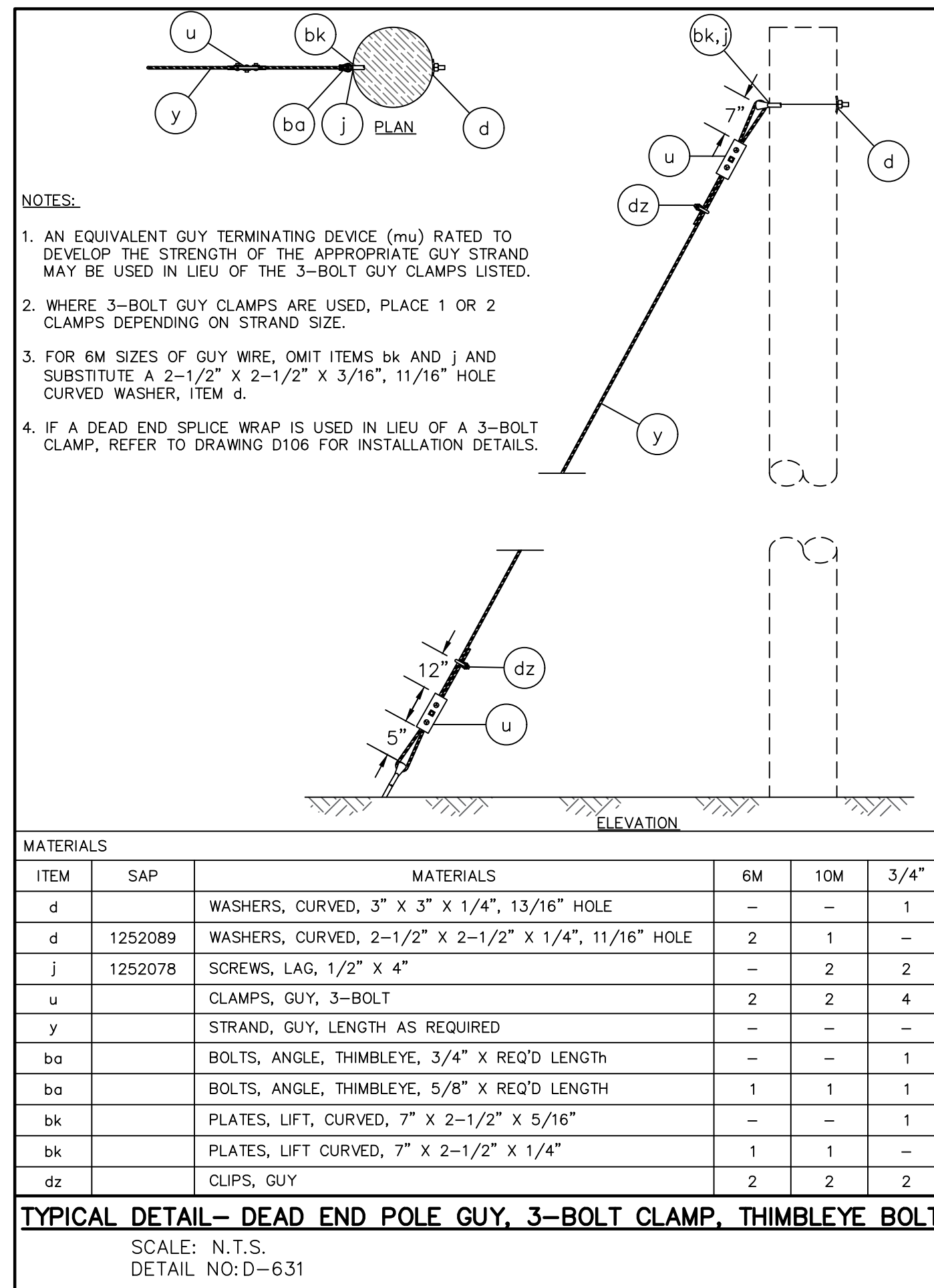


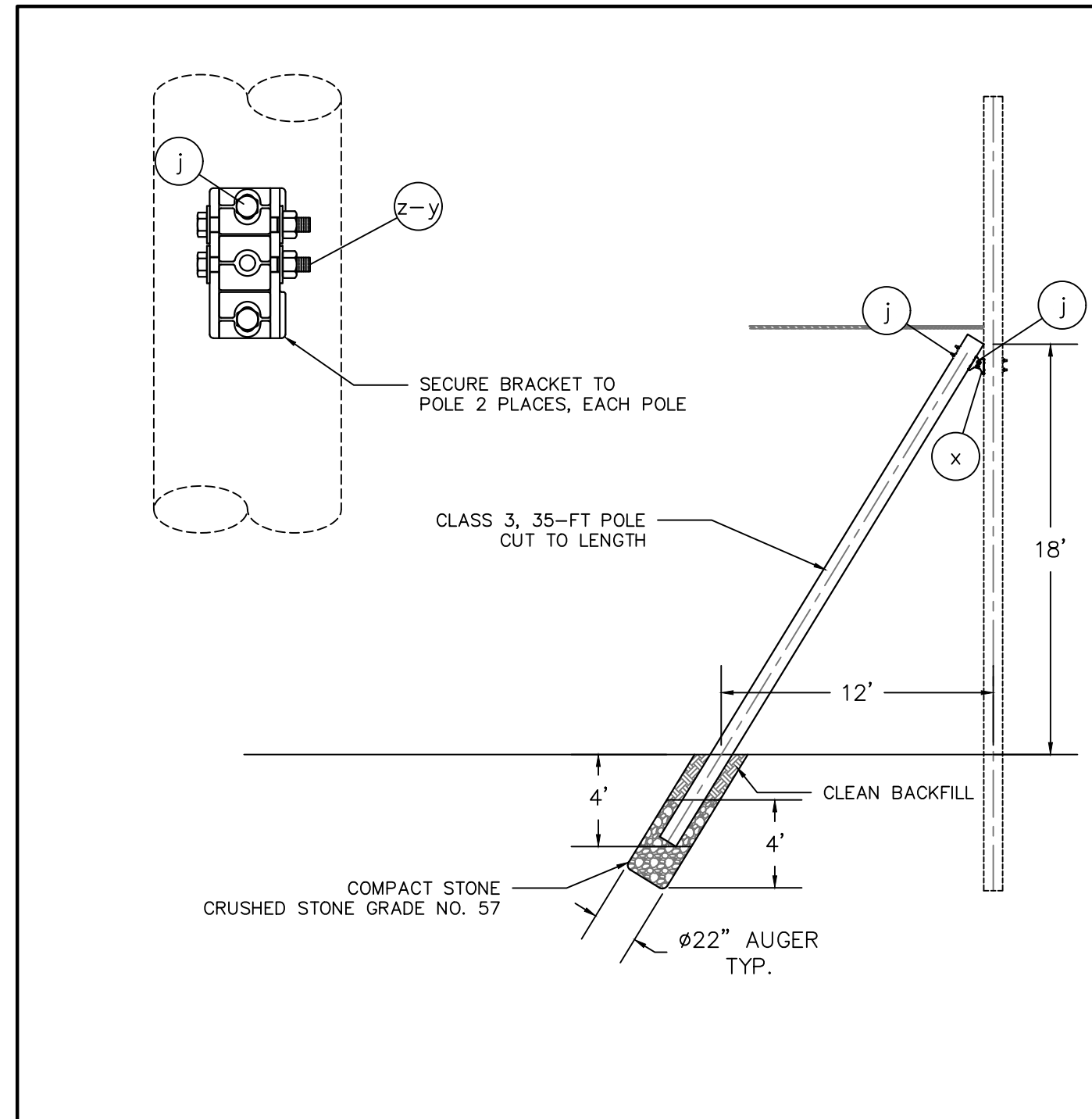
SECTION VIEW 2
FACING SOUTH WEST
SCALE: 1:4





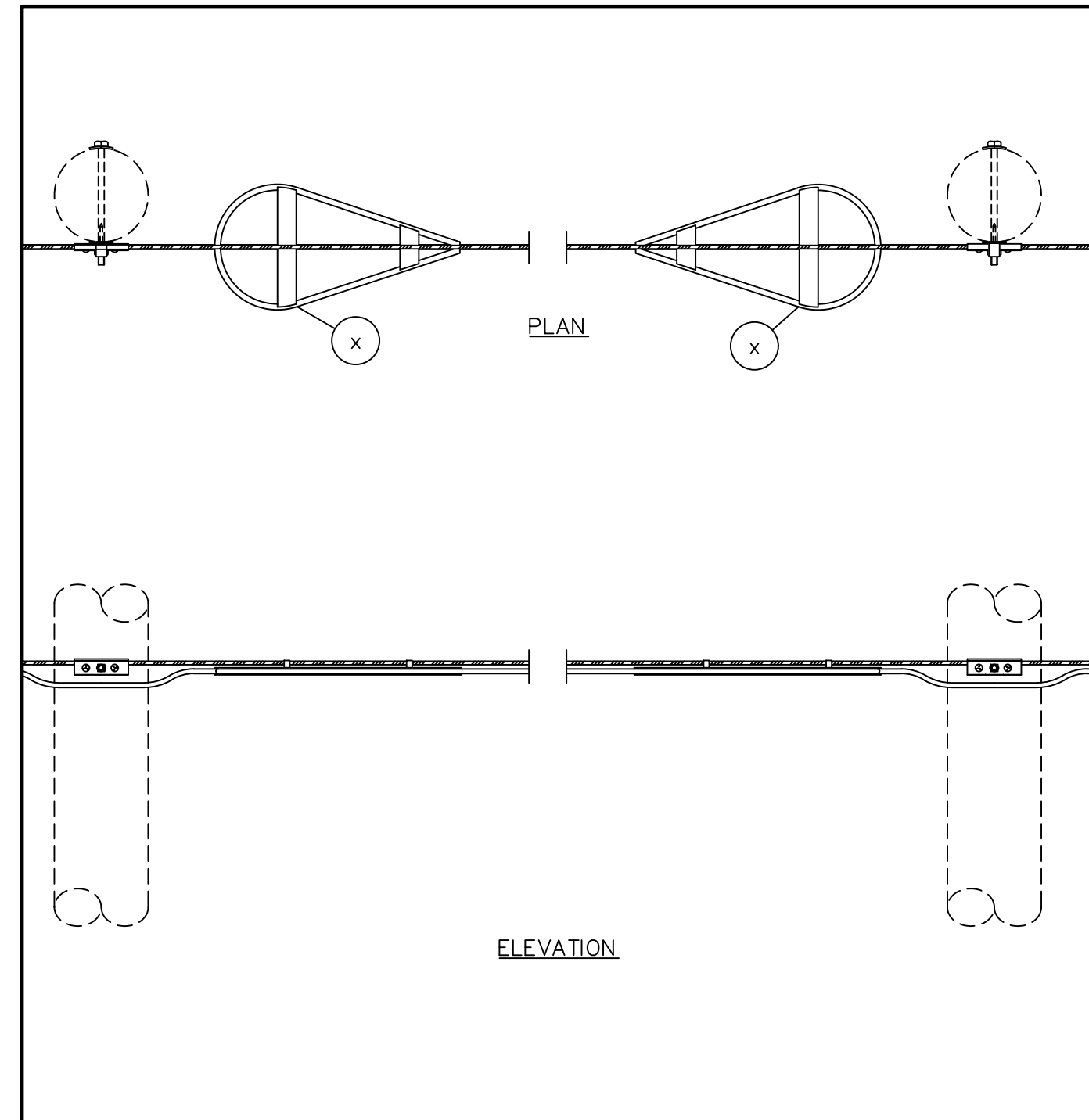






MATERIALS			
ITEMS	SAP	MATERIALS	QTY
x		POLE BRACE CONNECTOR BRACKET (MACLEAN POWER- PAX128)	1
y		HEX SCREW, 3/4"-10 X 5-1/2", 3/4"-10 UNC HEX NUT	4
z		WASHERS, STRAIGHT, 1" X 3/4"	8
d	1252089	WASHERS, CURVED, 2-1/2" X 2-1/2" X 1/4", 11/16" HOLE	4
j	1252078	SCREWS, LAG, 1/2" X 4"	4

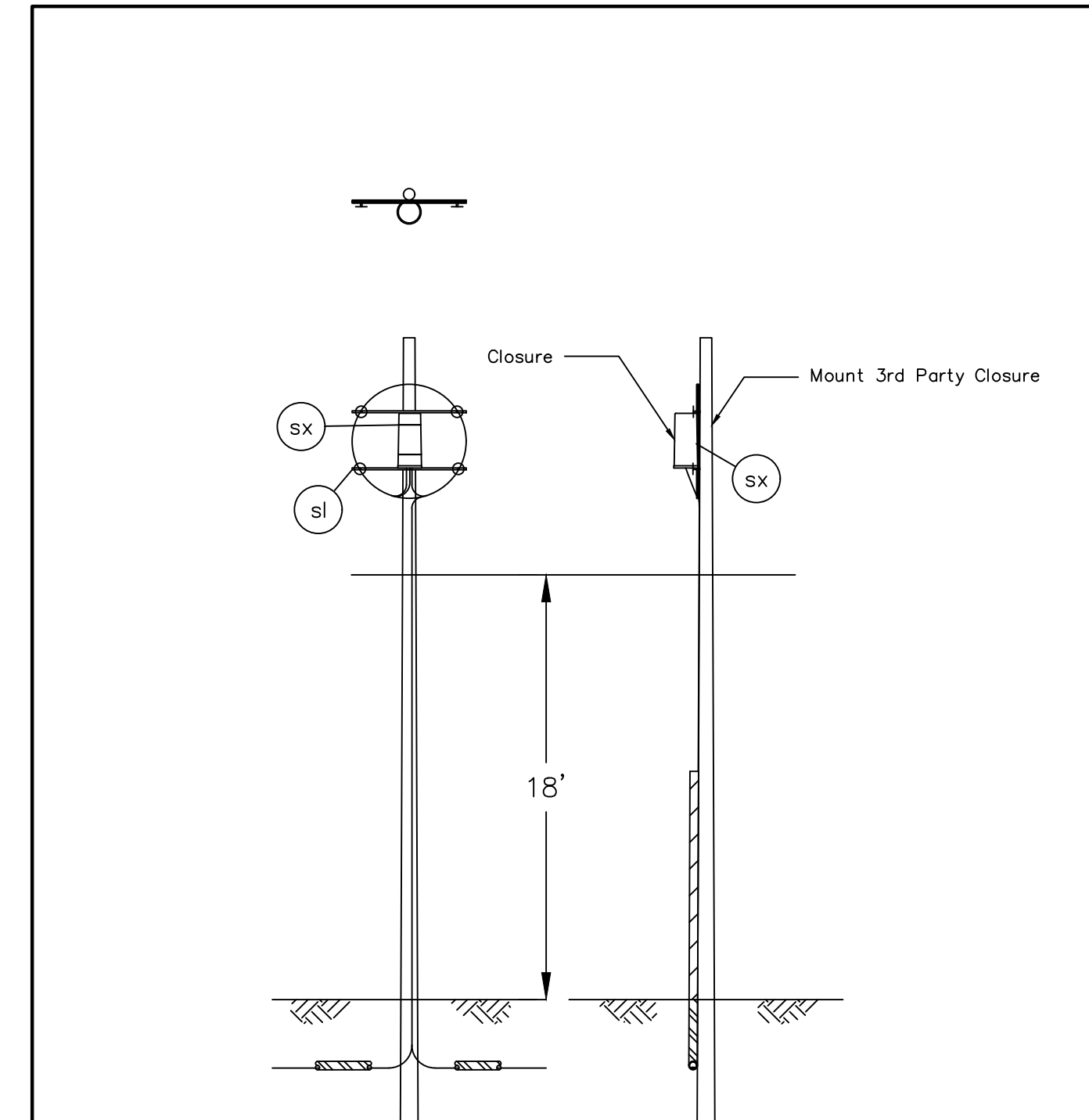
TYPICAL DETAIL- PUSH POLE
 SCALE: N.T.S.
 DETAIL NO:D-634



- NOTES:**
1. ALL AERIAL MOUNTED SLACK LOOPS SHALL BE MOUNTED IN SNOW SHOES.
 2. DISTANCE BETWEEN SNOW SHOES SHALL BE DETERMINED IN THE FIELD WITH SUFFICIENT DISTANCE BETWEEN SNOW SHOES TO MAINTAIN TENSION ON CABLE.

MATERIALS						
ITEMS	SAP	MATERIALS	6M	10M	3/4"	
x	1268275	SNOW SHOE, CABLE SLACK STORAGE, 30" (PAIR)	1	1	1	

TYPICAL DETAIL- AERIAL SLACK
 SCALE: N.T.S.
 DETAIL NO:D-641



MATERIALS		
ITEMS	SAP	MATERIALS
sl	-	8003569- DUAL LONG CROSSARMS WITH SPOOLS
sx	-	BANDING STRAPS, OR CLOSURE MOUNTING KIT

TYPICAL DETAIL- SLACK POLE
 SCALE: N.T.S.
 DETAIL NO:D-642

