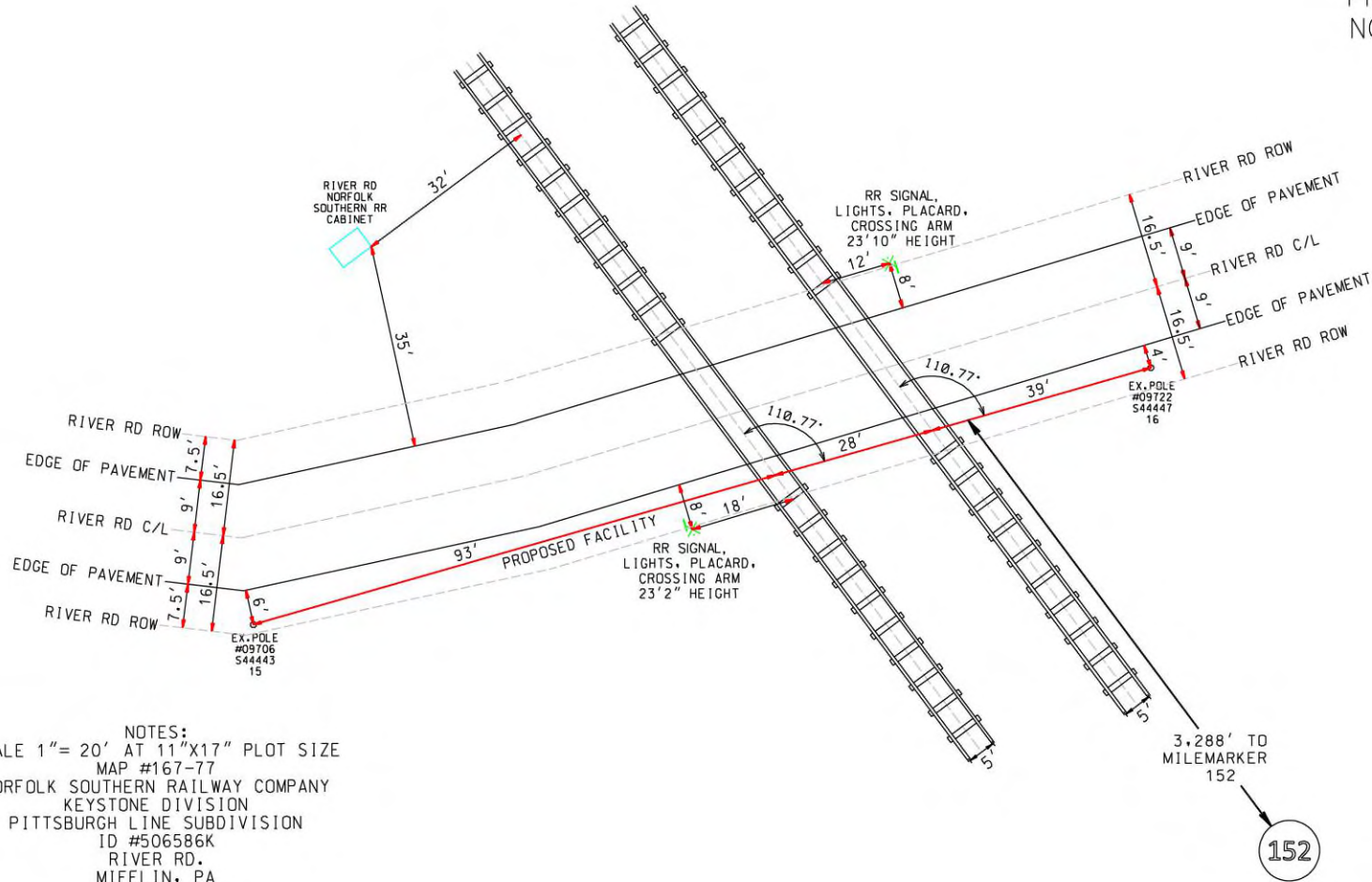




*Zito Media*

PROPOSED RAILROAD  
NORFOLK SOUTHERN  
RR CROSSING  
AERIAL VIEW



NOTES:  
SCALE 1" = 20' AT 11"X17" PLOT SIZE  
MAP #167-77  
NORFOLK SOUTHERN RAILWAY COMPANY  
KEYSTONE DIVISION  
PITTSBURGH LINE SUBDIVISION  
ID #506586K  
RIVER RD.  
MIFFLIN, PA  
JUNIATA CO.  
LAT: 40.5530368°  
LONG: -77.4004004°  
MILEMARKER #152.610

WIRE/CABLE DETAILS:  
PROPOSED 139' OF  
3/8" 48 CNT FIBER OPTIC COMMUNICATIONS CABLE  
THROUGH A 1/4" MESSENGERED (AD TECH 1 1/4" SDR 9 FIGURE 8) AERIAL DUCT  
DEADEND STRANDVICED CLAMPED ON POLE #09706S44443/15 AND #09722S44447/16

**CERTIFIED CORRECT PLANS**

*Will M. D.P.E.*  
Professional Engineer  
Approved by Bureau of Technical Utility Services

**PA PUBLIC UTILITY COMMISSION**

ATTEST *Matthew L. Hunder*  
Secretary

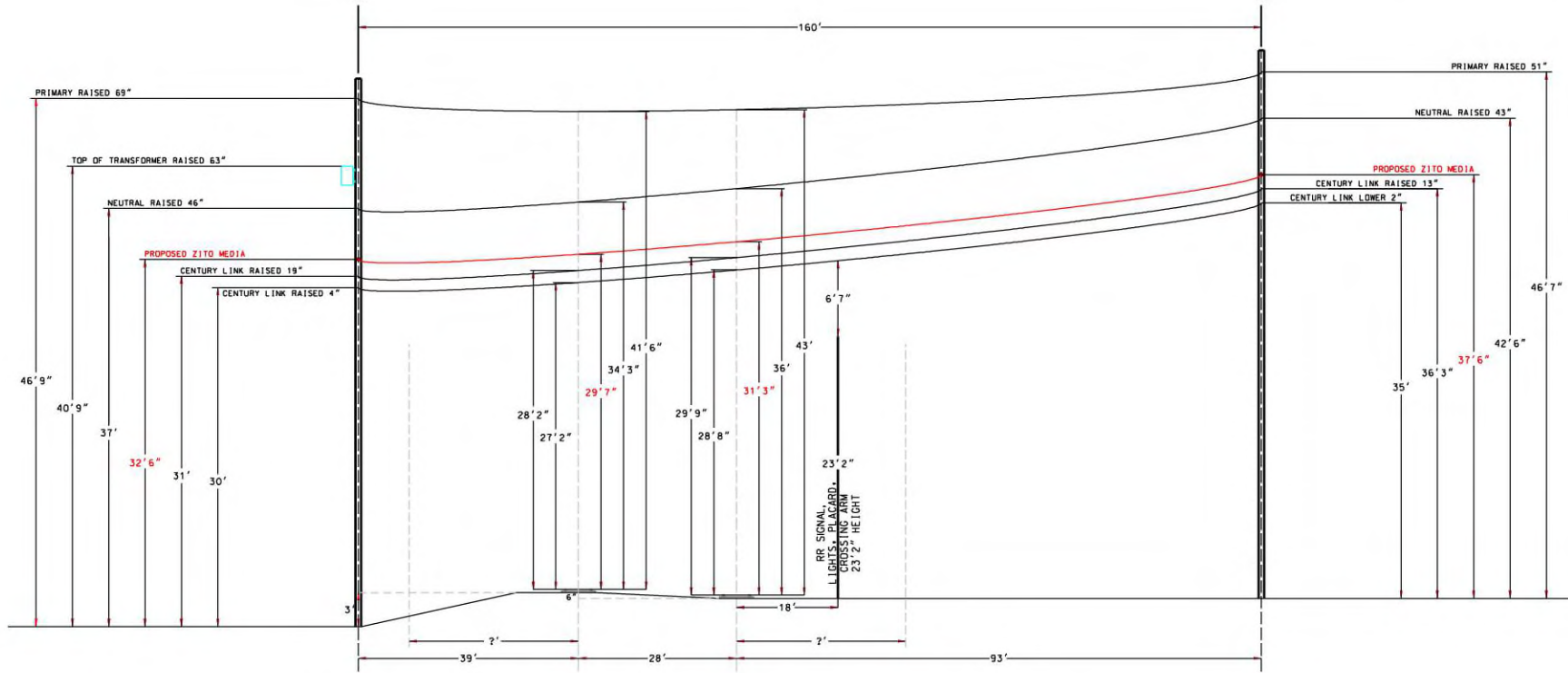


# Zito Media

PROPOSED RAILROAD  
NORFOLK SOUTHERN  
CROSSING PROFILE VIEW

50' CLASS 3 POLE  
BEING REPLACED  
WITH 55B-4-LDE  
55' STEEL POLE  
#09722  
S44447  
16

50' CLASS 3 POLE  
BEING REPLACED  
WITH CLASS 2  
55' WOOD POLE  
#090706  
S44443  
15



VIEW LOOKING SOUTH EAST

NOTES:  
SCALE 1"= 20' AT 11"X17" PLOT SIZE  
MAP #167-77  
NORFOLK SOUTHERN RAILWAY COMPANY  
KEYSTONE DIVISION  
PITTSBURGH LINE SUBDIVISION  
ID #506586K  
RIVER RD.  
MILFORD TWP. PA  
JUNIATA CO.  
LAT: 40.5530368°  
LONG: -77.4004004°  
MILEMARKER #152.610

WIRE/CABLE DETAILS:  
PROPOSED 139' OF  
3/8" 48 CNT FIBER OPTIC COMMUNICATIONS CABLE  
THROUGH A 1/4" MESSENGERED (AD TECH 1 1/4" SIDR 9 FIGURE 8) AERIAL DUCT  
DEADEND STRANDVICED CLAMPED ON POLE #09706S44443/15 AND #09722S44447/16

**CERTIFIED CORRECT PLANS**

*Will M. D. P.E.*  
Professional Engineer

Approved by Bureau of Technical Utility Services

**PA PUBLIC UTILITY COMMISSION**

ATTEST *Matthew L. Henschel*  
Secretary