



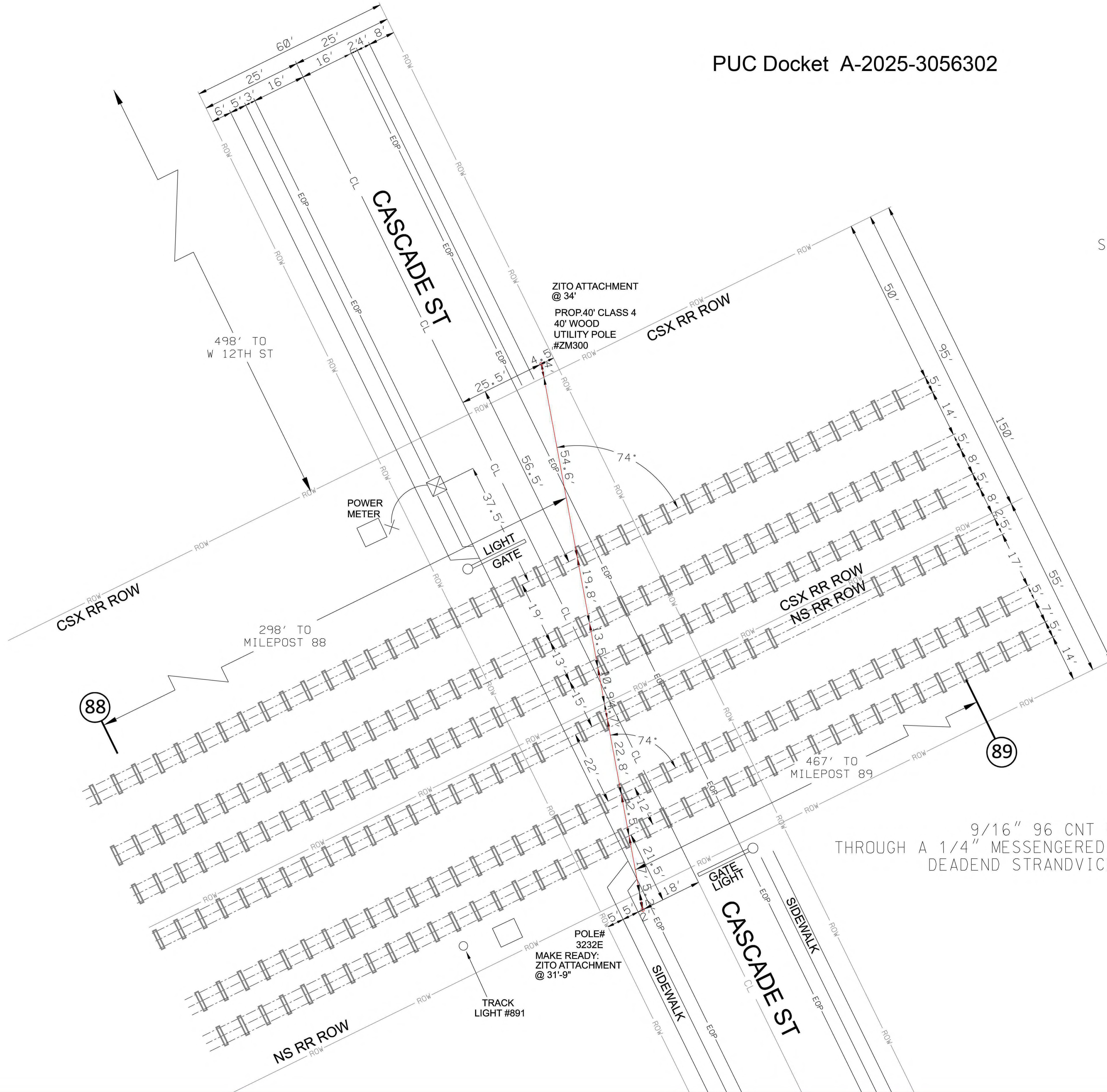
PUC Docket A-2025-3056302

# Zito Media

PROPOSED RAILROAD  
CSX/NS RR CROSSING  
AERIAL VIEW

NOTES:  
SCALE 1" = 30' AT 11"X17" PLOT SIZE

MAP #1559  
CSX RR 3 TRACKS  
ID# CSX662278  
NS RR 3 TRACKS  
D.O.T. 524002M  
1340 CASCADE ST  
ERIE, PA 16502  
LAT: 42.11431°  
LONG: -80.10129°  
MILEPOST 88/89



WIRE/CABLE DETAILS:  
PROPOSED 165' OF  
9/16" 96 CNT FIBER OPTIC COMMUNICATIONS CABLE  
THROUGH A 1/4" MESSENGERED (AD TECH 1 1/4" SIDR 9 FIGURE 8) AERIAL DUCT  
DEADEND STRANDVICED CLAMPED ON POLE #3232E AND #ZM300

A-2025-3056302

|                              |                                      |
|------------------------------|--------------------------------------|
| CERTIFIED CORRECT PLANS      |                                      |
| <i>Robert P. ...</i>         |                                      |
| Professional Engineer        | Bureau of Technical Utility Services |
| Approved By                  |                                      |
| PA PUBLIC UTILITY COMMISSION |                                      |
| ATTEST                       | <i>Matthew L. ...</i>                |
| Secretary                    |                                      |

