

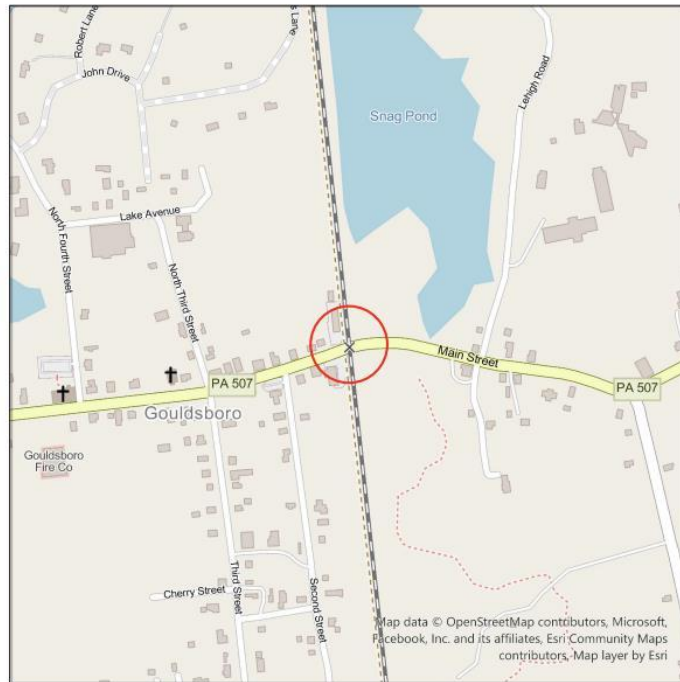
COMCAST CABLE COMMUNICATIONS MANAGEMENT, LLC CONSTRUCTION PLANS

Exhibit A

A-2025-3053491

MAIN STREET GOULDSBORO - WAYNE COUNTY

LEGEND	
Ex.	Existing
R/S	Railroad Spike
M.P.	Railroad Mile Post
M.S.	Mag-Spike
M.L.	Mag-Loop
C.M.	Concrete Monument
T.M.P.	Tax Map & Parcel
	Highway Street
---	Right of Way Line
---	State Boundary
○	Utility Pole
●	Proposed Core Bore
---	Proposed Underground Line
□	Proposed CATV Vault
○	Light Pole/ Lamp
○	Day Wire
---	Overhead Electric
---	Overhead Telephone
---	Underground CATV
---	Underground Electric
---	Underground Telephone
---	Underground CATV
□	Electric Junction Box
□	Electric Transformer
○	Electric Meter
○	Electric Manhole
○	Telephone Manhole
○	Telephone Box
○	CATV Manhole
○	CATV Pedestal
○	Stormwater Pipe
○	Stormwater Manhole
○	Stormwater Inlet
---	Water Line
○	Water Manhole
○	Water Valve
○	Water Msh
○	Fire Hydrant
---	Sanitary Sewer Line
○	Sanitary Sewer Manhole
○	Gas Valve
○	Gas Meter
---	Gas Line
---	Clearcut
---	Fence Line
---	Sign
○	Handicapped Symbol
○	Concrete Monument
○	Mailbox



Map data © OpenStreetMap contributors, Microsoft, Facebook, Inc. and its affiliates, Esri/Community Maps contributors, Map layer by Esri

CERTIFIED CORRECT PLANS
 Approved by Bureau of Technical Utility Services
PA PUBLIC UTILITY COMMISSION
 ATTEST Secretary *Matthew L. Henders*

1. THE LOCATIONS OF UNDERGROUND UTILITIES AS SHOWN HEREON ARE BASED ON ABOVEGROUND STRUCTURES AND RECORD DRAWINGS PROVIDED TO THE SURVEYOR. LOCATIONS OF UNDERGROUND UTILITIES/STRUCTURES/SERVICES MAY VARY FROM LOCATIONS SHOWN HEREON. ADDITIONAL BURIED UTILITIES/STRUCTURES/SERVICES MAY BE ENCOUNTERED. NO EXCAVATIONS WERE MADE DURING THE PROCESS OF THE SURVEY TO LOCATE BURIED UTILITIES. THE LOCATIONS OF UNDERGROUND UTILITIES ARE APPROXIMATE AND MUST BE VERIFIED IN THE FIELD PRIOR TO CONSTRUCTION. TO COMPLY WITH REQUIREMENTS OF PENNSYLVANIA ACT 287 OF 1974 AS AMENDED ENTITLED: "UNDERGROUND UTILITY LINE PROTECTION LAW."
2. EXISTING UTILITIES AND STORM DRAINAGE SYSTEMS ARE SHOWN TO ALERT THE PERMITTEE/CONTRACTOR TO THEIR PRESENCE AND THE PERMITTEE/CONTRACTOR IS SOLELY RESPONSIBLE FOR DETERMINING ACTUAL LOCATIONS AND ELEVATIONS OF ALL UTILITIES AND STORM DRAINAGE SYSTEMS INCLUDING SERVICES. APPROXIMATE LOCATIONS OF EXISTING UTILITIES AND SURFACE FEATURES ARE BASED ON FIELD SURVEY BY AMERICOMM-LLC AND/OR PA DESIGN ONE-CALL.
3. THE PERMITTEE/CONTRACTOR MUST CONTACT THE PENNSYLVANIA ONE-CALL SYSTEM AT 1-800-242-1776, THREE WORKING DAYS PRIOR TO THE START OF WORK TO HAVE ALL UTILITIES MARKED IN THE WORK AREA.

SHEET INDEX	
SHEET 1	TITLE SHEET
SHEET 2	PROPOSED PLAN VIEW
SHEET 3	PROPOSED PROFILE VIEW

CALL BEFORE YOU DIG.
 PA STATE LAW REQUIRES 3 WORKING DAYS NOTICE FOR CONSTRUCTION PHASE AND 10 WORKING DAYS NOTICE IN DESIGN STAGE.
 PENNSYLVANIA ONE CALL SYSTEM, INC. 1-800-242-1776



AmeriComm-LLC Corporate Office
 21 State Avenue Suite 101
 Carlisle, PA 17013
 717-408-9116

COMCAST CORPORATION

MAIN STREET, GOULDSBORO, PA 18424	FIELDED _____ DRAWN H.W. APPROVED _____
--------------------------------------	-----------------------------------------------

REVISIONS				
NO.	DATE	DESCRIPTION	CKD	APP



**PROPOSED
RAILROAD CROSSING**

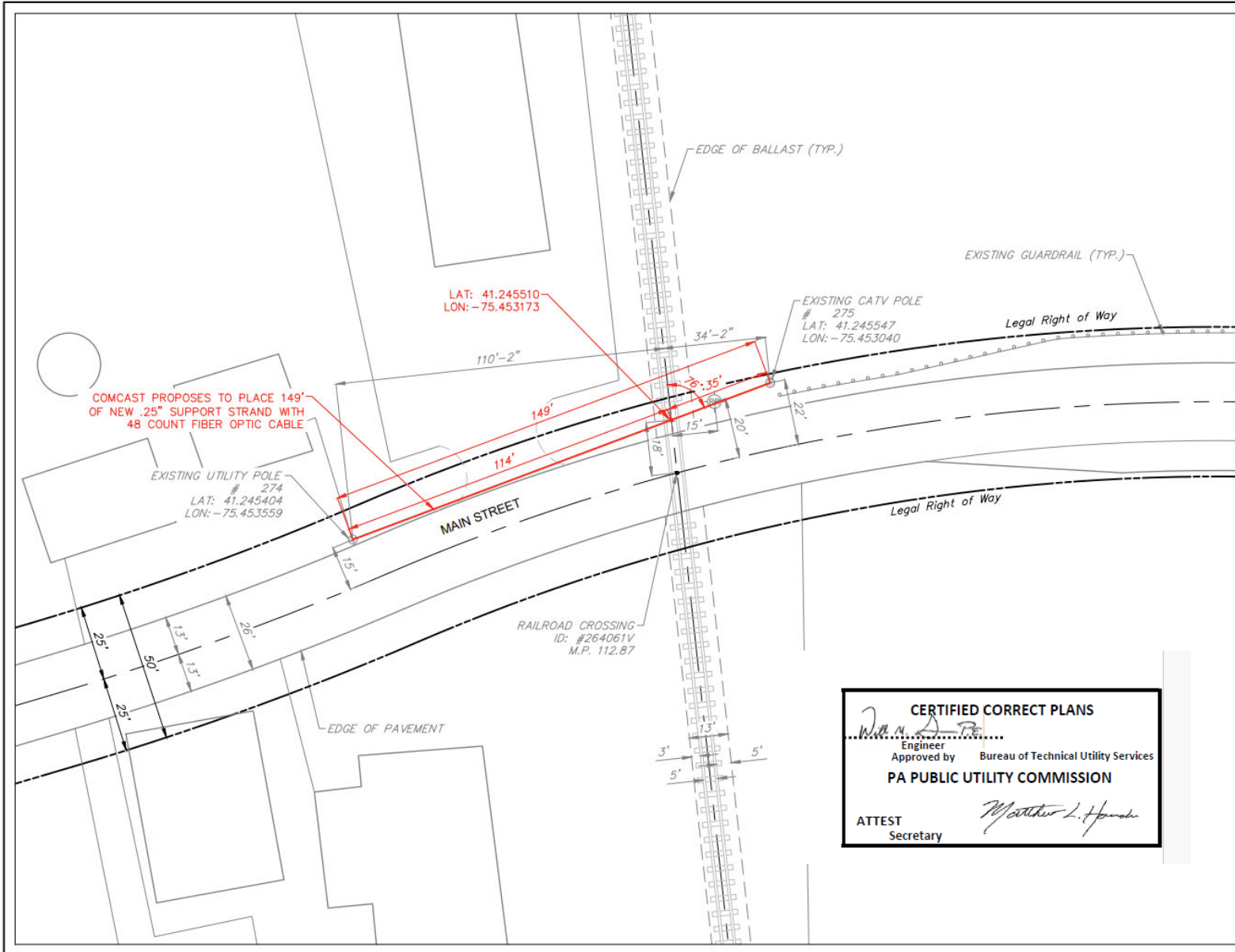
VICINITY MAP SCALE: 1" = 750'

COMCAST 1701 JFK BOULEVARD
PHILADELPHIA, PA 19103

**AERIAL CABLE CROSSING
OVER DELAWARE LACKAWANNA RAILROAD
AT MAIN STREET,
GOULDSBORO, WAYNE COUNTY, PA**

NORTH ±18' TO AAR/DOT #264061V & M.P. 112.87

LOCATION: MAIN STREET,
GOULDSBORO, PA
 LATITUDE: 41.845610
 LONGITUDE: -76.463173
 DRAWING NO: SHEET 1 OF 3
 DRAWING DATE: 02/04/2025
 DRAWING SCALE: 1 INCH = 30 FEET



AmeriComm-LLC Corporate Office
 21 State Avenue Suite 101
 Carlisle, PA 17013
 717-408-9116

COMCAST CORPORATION

MAIN STREET,
 GOULDSBORO, PA 18424

SITE LOCATION

REVISIONS

NO.	DATE	DESCRIPTION	CKD	APP



PROPOSED PLAN VIEW

SCALE: 1" = 30'
 GRAPHICAL SCALE IN FEET:
 0 15 30 60

COMCAST 1701 JFK BOULEVARD, PHILADELPHIA, PA 19103

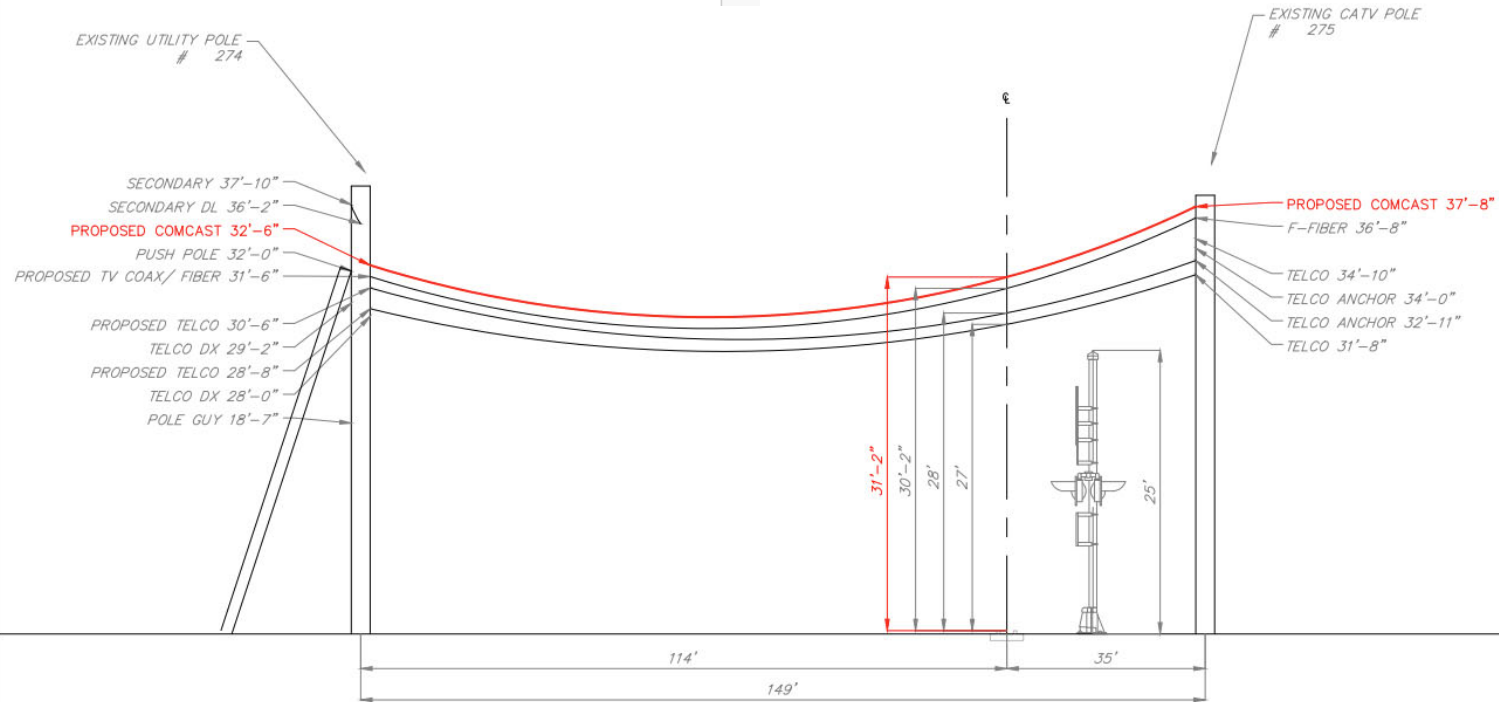
AERIAL CABLE CROSSING OVER DELAWARE LACKAWANNA RAILROAD AT MAIN STREET, GOULDSBORO, WAYNE COUNTY, PA

NORTH ±18' TO AAR/DOT #264061V & M.P. 112.87

LOCATION: MAIN STREET, GOULDSBORO, PA
 LATITUDE: 41.245510
 LONGITUDE: -75.453173
 DRAWING NO: **SECRET 2 OF 3**
 DRAWING DATE: 02/04/2028
 DRAWING SCALE: 1 INCH = 30 FEET

CERTIFIED CORRECT PLANS
W. N. A. T. E.
 Engineer
 Approved by Bureau of Technical Utility Services
PA PUBLIC UTILITY COMMISSION
 ATTEST *Matthew L. Hamada*
 Secretary

CERTIFIED CORRECT PLANS
[Signature]
 Engineer
 Approved by Bureau of Technical Utility Services
PA PUBLIC UTILITY COMMISSION
 ATTEST *[Signature]*
 Secretary



LOOKING NORTHWEST ON MAIN STREET



Americomm-LLC Corporate Office
 21 State Avenue Suite 101
 Carlisle, PA 17013
 717-408-9116

COMCAST CORPORATION

MAIN STREET,
 GOULDSBORO, PA 18424

FIELDED _____
 DRAWN H.W.
 APPROVED _____

SITE LOCATION

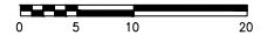
REVISIONS

NO.	DATE	DESCRIPTION	CKD	APP

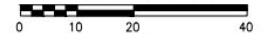


PROPOSED PROFILE VIEW

VERTICAL SCALE: 1" = 10'
 GRAPHICAL SCALE IN FEET:



HORIZONTAL SCALE: 1" = 20'
 GRAPHICAL SCALE IN FEET:



COMCAST 1701 JFK BOULEVARD
 PHILADELPHIA, PA 19103

AERIAL CABLE CROSSING
 OVER DELAWARE LACKAWANNA RAILROAD
 AT MAIN STREET,
 GOULDSBORO, WAYNE COUNTY, PA

NORTH ±18' TO AAR/DOT #264061V &
 M.P. 112.87

LOCATION: MAIN STREET,
 GOULDSBORO, PA

LATITUDE: 41.845510

LONGITUDE: -75.458173

DRAWING NO: SHEET 3 OF 3

DRAWING DATE: 02/04/2005

DRAWING SCALE: 1 INCH = 20 FEET / 10 FEET