

GENERAL NOTES

THIS WORK CONSISTS OF MAINTENANCE AND THE PROTECTION OF THE TRAVELING PUBLIC APPROACHING THE CONSTRUCTION AREA AND WITHIN THE LIMITS OF CONSTRUCTION AND ON APPROVED DETOURS.

FURNISH, ERECT, PLACE, AND MAINTAIN TRAFFIC CONTROL SIGNS AND DEVICES AND MAINTAIN TRAFFIC DURING HOURS OF CONSTRUCTION AND AT ALL OTHER TIMES IN ACCORDANCE WITH THE METHODS INDICATED ON THESE DRAWINGS, AND,

1. THE SPECIAL PROVISIONS OF THE CONTRACT.
2. PDT PUBLICATION 212, OFFICIAL TRAFFIC CONTROL DEVICES.
3. PDT PUBLICATION 213, TEMPORARY TRAFFIC CONTROL GUIDELINES.
4. PDT PUBLICATION 35, APPROVED CONSTRUCTION MATERIALS (BULLETIN 15).
5. PDT PUBLICATION 408/2020, SPECIFICATIONS.
6. MANUAL ON UNIFORM TRAFFIC CONTROL DEVICES (MUTCD).
7. PDT PUBLICATION 236, HANDBOOK OF APPROVED SIGNS.
8. PDT PUBLICATION 111, TRAFFIC CONTROL - PAVEMENT MARKINGS AND SIGNING STANDARDS TC-8600 AND TC-8700.

IMMEDIATELY UPON COMPLETION OF THE WORK REMOVE AND RETAIN THE DEVICES UNLESS OTHERWISE SPECIFIED IN THE SPECIAL PROVISIONS. THE COUNTY WILL REMOVE ANY TRAFFIC CONTROL DEVICES ERECTED BY COUNTY FORCES.

THE CONTRACTOR IS RESPONSIBLE FOR CONTACTING THE PENNSYLVANIA ONE CALL SYSTEM, INC. AT 1-800-242-1776 AT LEAST 3-FULL WORKING DAYS BEFORE DIGGING. PA ONE CALL SHALL BE CONTACTED BEFORE ANY SIGN POST ANCHOR IS DRIVEN INTO THE GROUND FOR TEMPORARY AND PERMANENT SIGNING.

ALL TRAFFIC CONTROL DEVICES TO BE IN PLACE AND INSPECTED BY THE PROJECT INSPECTOR DAILY PRIOR TO THE START OF WORK.

ALL TRAFFIC CONTROL DEVICES TO BE IN PLACE AND INSPECTED BY THE PROJECT INSPECTOR DAILY PRIOR TO THE END OF WORK.

NOTIFY THE WESTMORELAND COUNTY REPRESENTATIVE IN WRITING TWO WEEKS PRIOR TO MAKING ANY TRAFFIC PATTERN CHANGES AND WHEN PROJECT IS COMPLETE. ALL MODIFICATIONS MUST BE APPROVED BY THE DISTRICT TRAFFIC ENGINEER.

WHEN WORK IS COMPLETED FOR A PERIOD OF ONE WEEK (7 CONSECUTIVE CALENDAR DAYS) OR GREATER, THEN ALL LEAD IN SIGNAGE TO BE REMOVED BY COUNTY FORCES AND STORED AT THE COUNTY MAINTENANCE BUILDING FOR PICK-UP BY THE CONTRACTOR AT NO ADDITIONAL COST TO THE COUNTY. AFTER 30 DAYS BECOMES COUNTY PROPERTY.

INSPECTOR-IN-CHARGE TO REPORT ALL TRAFFIC INCIDENTS TO THE WESTMORELAND COUNTY REPRESENTATIVE AND DISTRICT TRAFFIC ENGINEER BY COPY OF THE TRAFFIC ACCIDENT REPORT FORM FROM THE PENNSYLVANIA STATE POLICE.

ALL SIGNS NOT IN USE TO BE EITHER COMPLETELY COVERED OR REMOVED FROM SIGHT. THE CONTRACTOR IS TO REINSTALL ALL SIGNS THAT WERE REMOVED FOR THE CONSTRUCTION PROJECT. DO NOT PLACE ANY ADHESIVE ON THE FACE OF THE SIGN.

ALL EXISTING SIGNAGE WITH CONFLICTING MESSAGES TO BE COMPLETELY COVERED OR REMOVED AND REINSTALLED WHEN PROJECT IS COMPLETE.

ALL SIGNS AND DEVICES ARE TO BE NEW AT THE BEGINNING OF THE PROJECT AND ARE TO BE MAINTAINED TO WESTMORELAND COUNTY REPRESENTATIVE'S SATISFACTION THROUGHOUT THE PROJECT DURATION.

THE CONTRACTOR IS RESPONSIBLE FOR MAINTENANCE AND PROTECTION OF PEDESTRIANS WITHIN THE WORK AREA, PRINCIPALLY ADJACENT TO EXCAVATION AREAS.

ALL SIGNS TO BE REFLECTORIZED WITH MATERIAL THAT MEETS PENNDOT SPECIFICATIONS FOR SHEET REFLECTIVE MATERIAL, TYPE III OR TYPE VII FLUORESCENT.

ALL CHANNELIZING DEVICES MUST HAVE A REFLECTIVE SHEETING A MINIMUM OF 150 SQUARE INCHES FOR SHORT TERM OPERATIONS AND 270 SQUARE INCHES FOR LONG TERM OPERATIONS.

THE REFLECTIVE MATERIAL FOR CHANNELIZING DEVICES MUST BE A MATERIAL THAT MEETS PENNDOT CURRENT SPECIFICATIONS FOR SHEET REFLECTIVE MATERIAL, BARRICADE RAILS AND VERTICAL PANELS WHICH WILL REQUIRE TYPE III OR TYPE VII.

THIS TRAFFIC CONTROL PLAN DOES NOT RELIEVE THE CONTRACTOR OF HIS RESPONSIBILITY AS SPECIFIED IN SECTION 901.3 OF PUBLICATION 408/2020.

ADJUST ALL DISTANCES SLIGHTLY TO FIT FIELD CONDITIONS.

NO ROADWAY IS PERMITTED TO HAVE A LANE CLOSURE OR ROAD CLOSURE STARTING NOVEMBER 01, AND ENDING APRIL 01, WITHOUT AN APPROVED REVISED TRAFFIC CONTROL PLAN ADDRESSING WINTER OPERATIONS.

GENERAL NOTES CONT.

DO NOT PARK, STOP OR STORE ANY EQUIPMENT WHICH IS NOT BEING USED FOR THE CURRENT WORK OPERATION, ADJACENT TO AN ACTIVE TRAVEL LANE. STORE ALL EQUIPMENT OUTSIDE OF THE WORK AREA IN A CLEAR ZONE SUITABLY PROTECTED STAGING AREA.

THE TRAFFIC CONTROL DEVICES SHOWN DO NOT NECESSARILY DEPICT THE ACTUAL NUMBER OF DEVICES REQUIRED.

MOUNT ALL SIGNS ON TYPE III BARRICADES (SEE PUBLICATION 213, AND TC-8716 AND TC-8717) UNLESS OTHERWISE SHOWN OR DIRECTED.

ERECT ALL POST MOUNTED SIGNS IN ACCORDANCE WITH TC-8716 AND TC-8717 AND MOST CURRENT PUBLICATION 111 (TRAFFIC CONTROL - PAVEMENT MARKINGS AND SIGNING STANDARDS).

ANY SPECIAL SIGNS ARE TO BE FABRICATED IN ACCORDANCE WITH TC STANDARDS 8700 SERIES.

ATTACH TYPE C LIGHTS TO ALL DRUMS OR CHANNELIZING DEVICES USED TO PROTECT OPEN EXCAVATIONS ADJACENT TO ROADWAY.

PROVIDE NEW REFLECTIVE SHEETING FOR ALL SIGNS AND DEVICES, I.E. SUPPORTS, SIGN BLANKS, DRUMS, VERTICAL PANELS, ETC. SHALL BE CLEAN AND FREE FROM ALL DEFECTS.

THE CONTRACTOR IS RESPONSIBLE FOR MAINTAINING ACCESS TO ALL BUSINESSES AND DWELLINGS DURING ALL PHASES OF CONSTRUCTION.

PROVIDE ADEQUATE NUMBER OF TYPE III BARRICADES AND CHANNELING DEVICES AT ROAD CLOSURE LOCATIONS TO COMPLETELY CLOSE THE ROADWAY.

CONTRACTOR TO NOTIFY LOCAL EMERGENCY AUTHORITIES (E.G. POLICE, FIRE, MEDICAL), AFFECTED POST OFFICE(S), BUSINESSES, SCHOOL DISTRICT(S).

CONTRACTOR IS TO NOTIFY THE ASSISTANT CONSTRUCTION ENGINEER AND HE WILL NOTIFY THE APRAS COORDINATOR AT LEAST FOURTEEN DAYS PRIOR TO ANY SIGNIFICANT TRAFFIC IMPACTS (E.G. LATERAL WIDTH RESTRICTIONS LESS THAN 12 FEET).

TWO WEEKS PRIOR TO STARTING WORK, THE SIGN (W23-101) "THIS BRIDGE TO BE CLOSED FOR CONSTRUCTION" AND ALL THE DETOUR SIGNS ARE TO BE INSTALLED.

THE M4-9S SERIES DETOUR SIGNS SHOULD NOT BE SPACED FURTHER THAN ONE (1) MILE A PART AND PLACED AT EVERY HIGH VOLUME STATE SIDE ROAD.

FOR STATIONARY, SHORT TERM OPERATIONS, CONTROL TRAFFIC IN WORK AREAS IN ACCORDANCE WITH PUBLICATION 213 IF NOT ADDRESSED IN THE TRAFFIC CONTROL PLAN (TCP).

FLAG PERSONS ARE TO BE IN RADIO COMMUNICATIONS AT ALL TIMES DURING WORKING HOURS.

FOR SHORT TERM OPERATIONS - AND FOR INGRESS, EGRESS OF CONSTRUCTION DELIVERIES AND EMPLOYEES - USE SHORT TERM FLAGGING OPERATIONS. DURING HOURS OF DARKNESS, ALL SIGNS TO BE REFLECTORIZED OR ILLUMINATED, AND EACH ADVANCE WARNING SIGN SHALL HAVE A TYPE B LIGHT MOUNTED ON TOP.

ALL SHORT TERM OPERATION LEAD IN SIGNS TO BE MOUNTED ON PORTABLE SIGN STANDS ONLY AS STATED IN BULLETIN 15.

ALL CHANGES TO THIS TRAFFIC CONTROL PLAN MUST BE APPROVED, SIGNED, AND DATED BY THE WESTMORELAND COUNTY REPRESENTATIVE AND BY THE DISTRICT TRAFFIC UNIT.

TRAFFIC CONTROL DETAILS OTHER THAN THOSE SHOWN ON THESE DRAWINGS TO CONFORM TO THE FOLLOWING STANDARD DRAWINGS:

TC-8600	JUNE 13, 2013	(13 SHEETS)
TC-8700C	JUNE 13, 2013	(12 SHEETS)
TC-8702B	JUNE 13, 2013	(9 SHEETS)
TC-8716	FEB. 21, 2024	(2 SHEETS)
TC-8717	JUNE 13, 2013	(1 SHEET)

FABRICATED SIGNS

FOR ALL FABRICATED SIGNS THE ORANGE BACKGROUND WILL BE CONSTRUCTED OF PENNDOT APPROVED FLUORESCENT ORANGE RETROREFLECTIVE MATERIAL.

ALL FABRICATED SIGNS TO HAVE AN APPROPRIATELY SIZED BLACK BORDER, CORNER RADIUS, AND ORANGE MARGIN.

SIGNS TO BE FABRICATED AND INSTALLED IN ACCORDANCE WITH THE FOLLOWING STANDARD DRAWINGS:

TC-8700C	JUNE 13, 2013	(12 SHEETS)
----------	---------------	-------------

CONSTRUCTION SEQUENCE

RECONSTRUCTION OF THE FOURTH STREET BRIDGE OVER THE NORFOLK SOUTHERN RAILWAY IN WESTMORELAND COUNTY, AND ASSOCIATED ROADWAY RECONSTRUCTION WILL REQUIRE COMPLETE CLOSURE OF THE STRUCTURE AND APPROACH ROADWAY. A DETOUR FOR FOSTER AVENUE TRAFFIC WILL BE UTILIZED DURING THE CONSTRUCTION PROCESS. A BRIEF DESCRIPTION OF CONSTRUCTION ACTIVITIES, AS WELL AS THE MAINTENANCE AND PROTECTION OF TRAFFIC DURING CONSTRUCTION ARE PROVIDED BELOW.

- ERECT ALL TRAFFIC CONTROL ADVANCE WARNING AND DETOUR SIGNS AS SHOWN ON THE TRAFFIC CONTROL PLAN.
- IMPLEMENT THE FOSTER AVENUE DETOUR. MAINTAIN ACCESS TO ALL DRIVEWAYS.
- MAINTAIN THE CLOSURE OF THE EXISTING STRUCTURE ON FOURTH STREET.
- CONSTRUCT NEW STRUCTURE.
- PERFORM APPROACH ROADWAY CONSTRUCTION AS SHOWN IN THE ROADWAY CONSTRUCTION PLAN, INCLUDING DRAINAGE, GUIDE RAIL, AND OTHER MISCELLANEOUS WORK.
- UPON COMPLETION OF ALL CONSTRUCTION WORK, REMOVE THE DETOUR AND ALL TRAFFIC CONTROL SIGNS AND DEVICES.
- OPEN FOURTH AVENUE AND FOSTER AVENUE TO UNRESTRICTED TRAFFIC.

TABULATION OF TRAFFIC CONTROL DEVICES

(FOR INFORMATION ONLY) INCLUDED IN LUMP SUM ITEM NO. 0901-0001

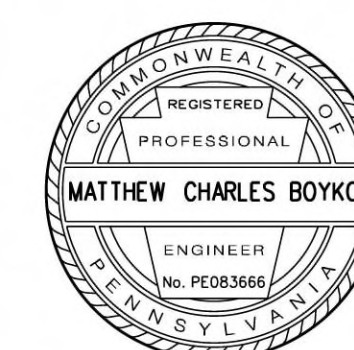
TRAFFIC CONTROL DEVICE	DESCRIPTION	SIZE	TOTAL QUANTITY
R11-2	ROAD CLOSED	48 "x30"	8
R11-4	ROAD CLOSED TO THRU TRAFFIC	60 "x30"	1
W20-1	ROAD WORK	36 "x36"	▲
W20-2	ADVANCE DETOUR	36 "x36"	4
W20-3	ROAD CLOSED	36 "x36"	1
W20-4	ONE LANE ROAD	36 "x36"	▲
W20-7	FLAGGER SYMBOL	36 "x36"	▲
W23-101	THIS STREET TO BE CLOSED FOR CONSTRUCTION	96 "x48"	2
W30-1-1	DISTANCE (500 FT)	20 "x6"	3
W30-1-6	DISTANCE (AHEAD)	20 "x6"	2
M4-8A	END DETOUR	24 "x18"	2
M4-9L	DETOUR, LEFT	30 "x24"	2
M4-9R	DETOUR, RIGHT	30 "x24"	1
M4-9S	DETOUR, STRAIGHT	30 "x24"	4
M4-9SL	LEFT ADVANCE DETOUR	30 "x24"	2
M4-9SR	RIGHT ADVANCE DETOUR	30 "x24"	1
M4-10R	DETOUR ARROW, RIGHT	48 "x18"	1
SS-1	FOSTER AVENUE	30 "x30"	16
	TYPE III BARRICADES		14
	POST MOUNTED SIGNS		12
	TYPE B LIGHTS		21
	CHANNELIZING DEVICES ORANGE/WHITE		▲

▲ AS REQUIRED

SEPARATE PAY ITEMS

ITEM NO. / UNIT	DESCRIPTION	TOTAL QUANTITY REQUIRED	REMARKS
09010231 DAY	ADDITIONAL WARNING LIGHTS, TYPE B	30	AS DIRECTED
09010240 SF	ADDITIONAL TRAFFIC CONTROL SIGNS	100	AS DIRECTED

**TRAFFIC CONTROL DETAILS
GENERAL NOTES,
CONSTRUCTION SEQUENCE
& TABULATIONS**



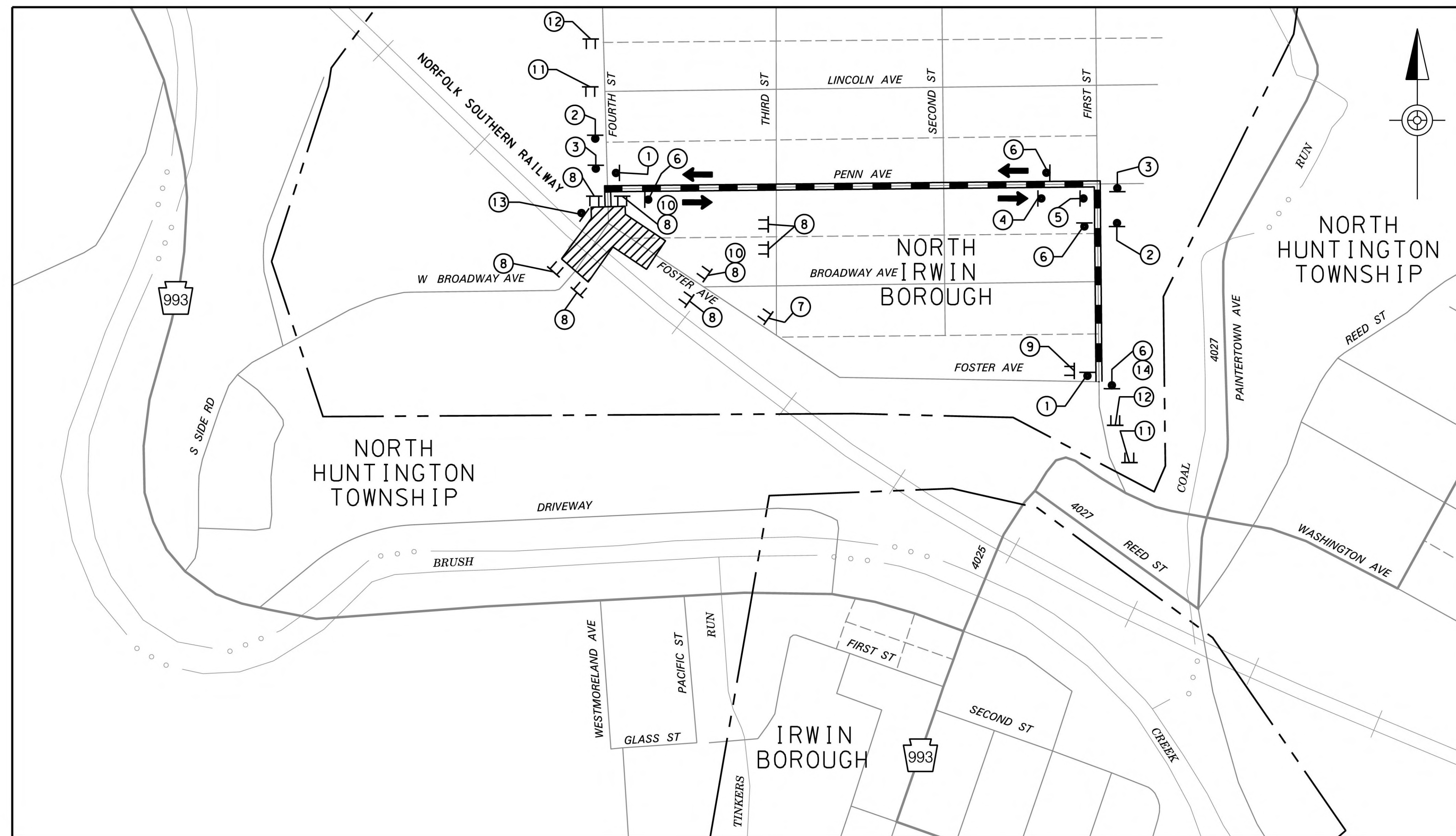
CERTIFIED CORRECT PLANS

Professional Engineer
Approved by Bureau of Technical Utility Services

PA PUBLIC UTILITY COMMISSION

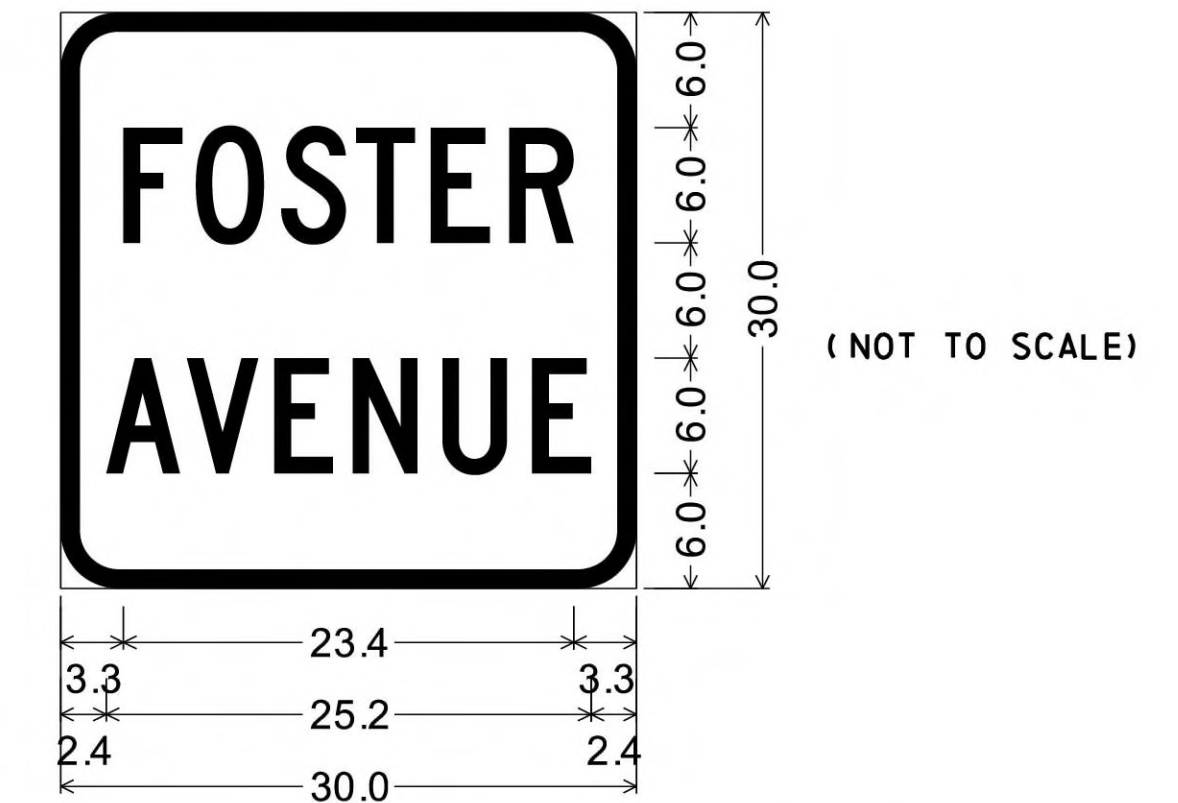
ATTEST *Matthew L. Hines* 04/24/2026
Secretary Docket: A-2024-3052077

DISTRICT	COUNTY	ROUTE	SECTION	SHEET
12-0	WESTMORELAND	FOURTH ST		11 OF 27
NORTH IRWIN BOROUGH				
REVISION NUMBER	REVISIONS			DATE BY



- NOTES:**
- COORDINATE PLACEMENT OF DETOUR SIGNS AND CONSTRUCTION WARNING SIGNS. SIGN LOCATION AND DISTANCES MAY BE ADJUSTED SLIGHTLY TO FIT FIELD CONDITIONS.
 - THE FOSTER AVENUE DETOUR LENGTH IS APPROXIMATELY 1/2 MILE.
 - DISTANCE PANELS ON SIGNS INDICATE THE APPROXIMATE DISTANCE FOR PLACEMENT OF THESE SIGNS FROM THE START OF THE DETOUR OR ROAD CLOSURE. FIELD VERIFY THE DISTANCES PLACED ON THE SIGN PRIOR TO FABRICATION BASED ON THE LOCATION OF THE SIGN THAT BEST FITS THE FIELD CONDITIONS.

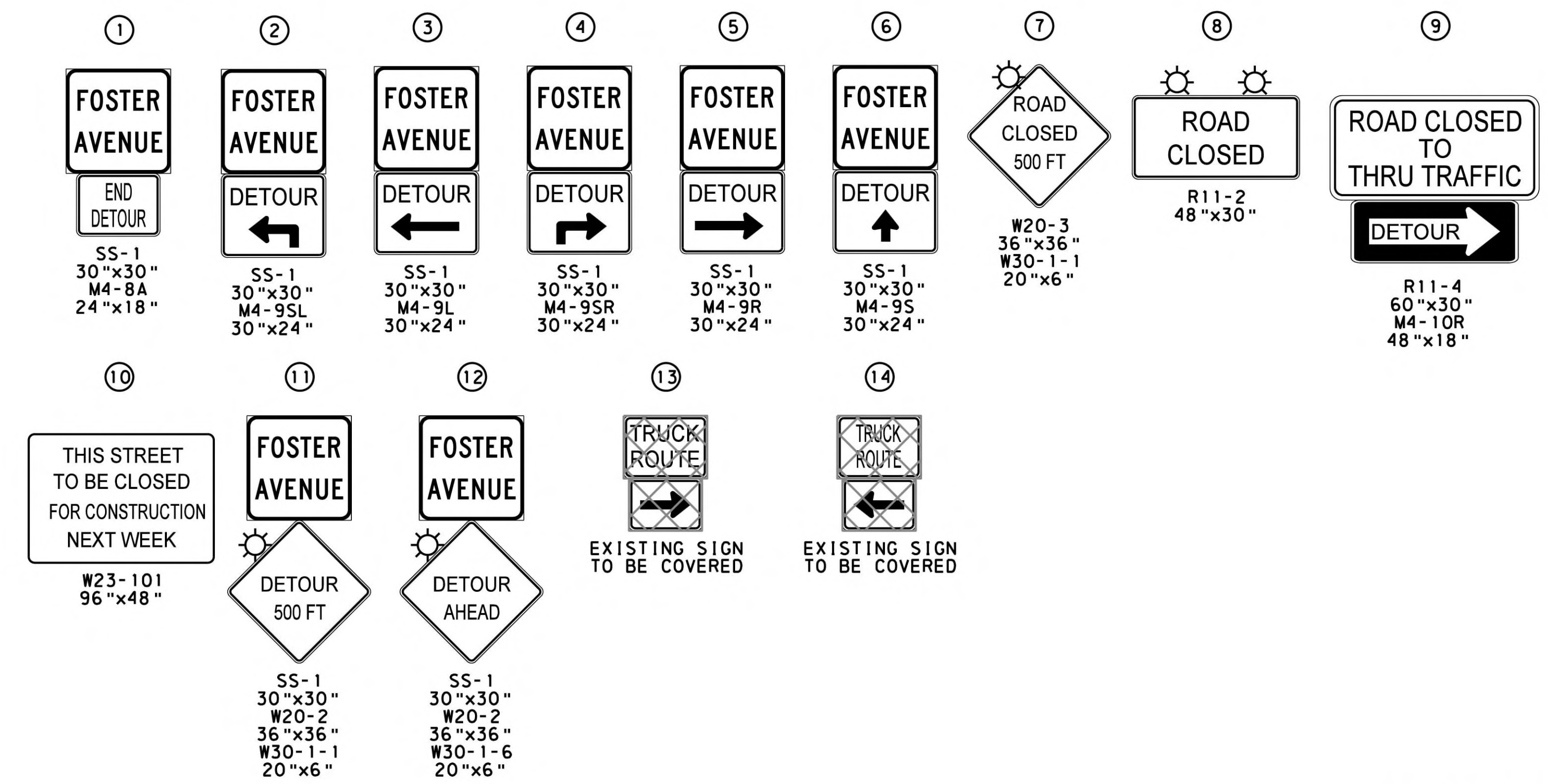
SPECIAL SIGN DETAIL



3.0" Radius, 1.0" Border, Black on Orange;
 "FOSTER", C 2K;
 "AVENUE", C 2K;
 Table of distances between letter and object lefts

LEGEND

- WORK AREA
- DIRECTION OF TRAVEL
- DETOUR ROUTE
- STATE ROUTE
- LOCAL ROAD
- ALLEY
- MUNICIPAL BOUNDARY
- TYPE III BARRICADE
- POST MOUNTED SIGN
- TYPE B LIGHT
- SIGN IDENTIFIER



TRAFFIC CONTROL DETAILS
 FOURTH STREET
 BRIDGE DETOUR

