

SHEET: 001 OF 002  
 PLAN DRAWING OVERHEAD  
 BY: STU RUWET

ISSUE DATE: 12/17/2025  
REVISION  
 REV:  
 REV:  
 REV:  
 REV:  
 SCALE: 3/8" = 1'-0"

**COMPANY**  
 SUNRISE TELECOM

**PROJECT**  
 BELLS LN

**DOT CROSSING/RAIL OWNER**  
 517985C  
 NORFOLK SOUTHERN  
 RAILWAY COMPANY

**RR MILE POST:** 0278.450

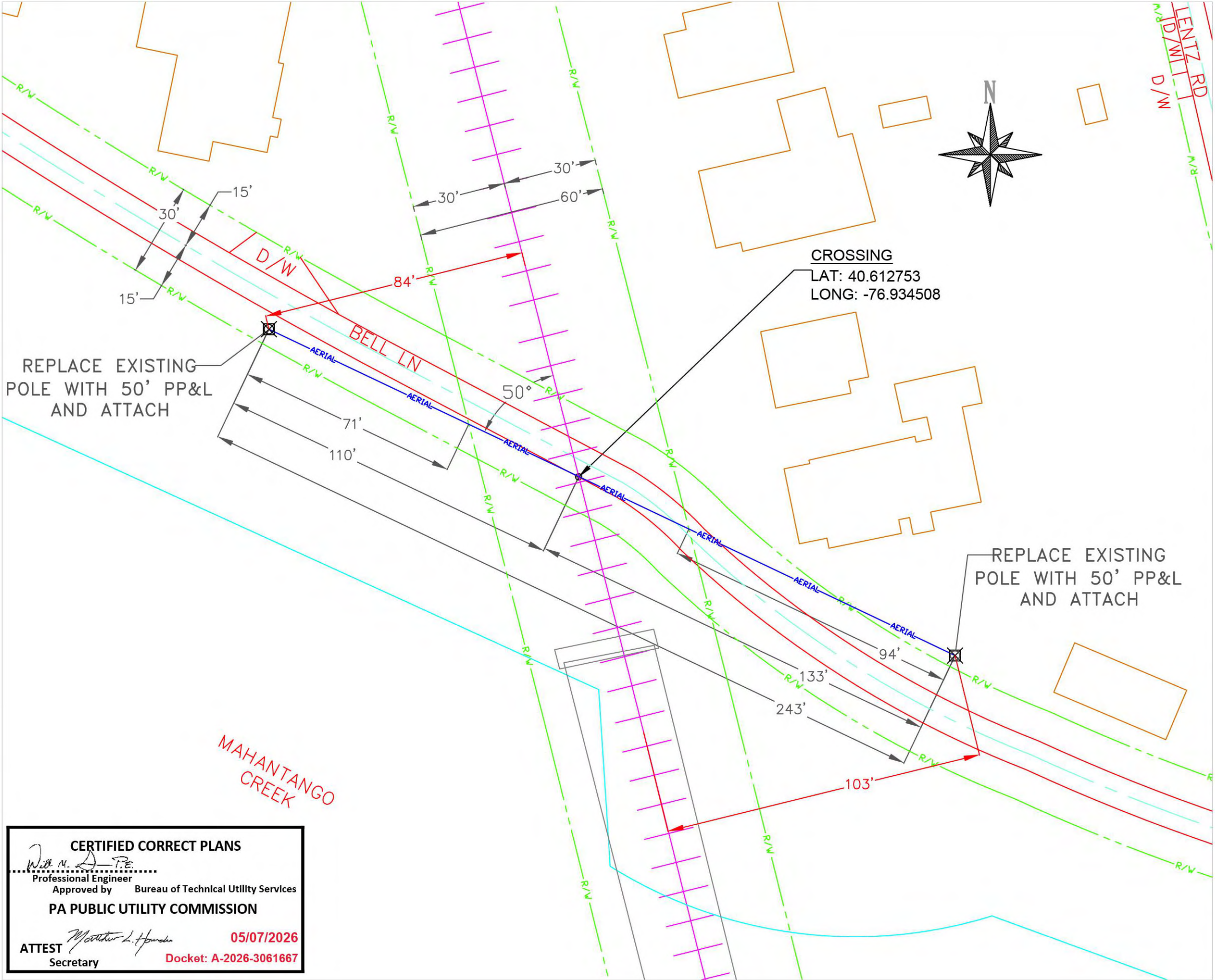
**LATITUDE:** 40.612780°  
**ACTUAL:** 40.612753°

**LONGITUDE:** -76.934518°  
**ACTUAL:** -76.934508°

**STATE:** PENNSYLVANIA

**COUNTY:** NORTHUMBERLAND

**CITY:** LIVERPOOL



**CERTIFIED CORRECT PLANS**  
*Will N. D. P.E.*  
 Professional Engineer  
 Approved by Bureau of Technical Utility Services  
**PA PUBLIC UTILITY COMMISSION**

ATTEST *Margaret L. Henders* 05/07/2026  
 Secretary Docket: A-2026-3061667

NOTE: CROSSING ANGLE  
 DICTATED BY PUBLIC ROAD  
 ROW



CONTENTS TO BE HANDLED ..... FIBER OPTIC CABLE - 48 FOC  
 OUTSIDE DIAMETER ..... NA/  
 INSIDE DIAMETER ..... N/A  
 PIPE MATERIAL ..... N/A  
 SPECIFICATIONS AND GRADE ..... N/A  
 WALL THICKNESS ..... N/A  
 TYPE OF JOINT ..... N/A  
 METHOD OF INSTALLATION ..... AERIAL  
 AERIAL: TOP OF RAIL TO CABLE ..... 28' 0"  
 UNDERGROUND: BASE OF RAIL TO TOP OF CASING ..... N/A  
 BORE DIAMETER: ..... N/A  
 BORE METHOD: ..... N/A

SHEET: 002 OF 002  
 PLAN DRAWING PROFILE  
 BY: STU RUWET

ISSUE DATE: 12/17/2025

REVISION

REV:  
 REV:  
 REV:  
 REV:

SCALE: NONE/PROPORTIONAL

**COMPANY**  
**SUNRISE TELECOM**

**PROJECT**  
**BELLS LN**

**DOT CROSSING/RAIL OWNER**  
**517985C**  
**NORFOLK SOUTHERN**  
**RAILWAY COMPANY**

**RR MILE POST: 0278.450**

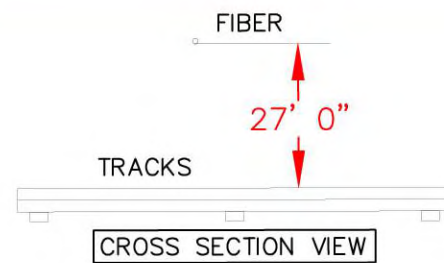
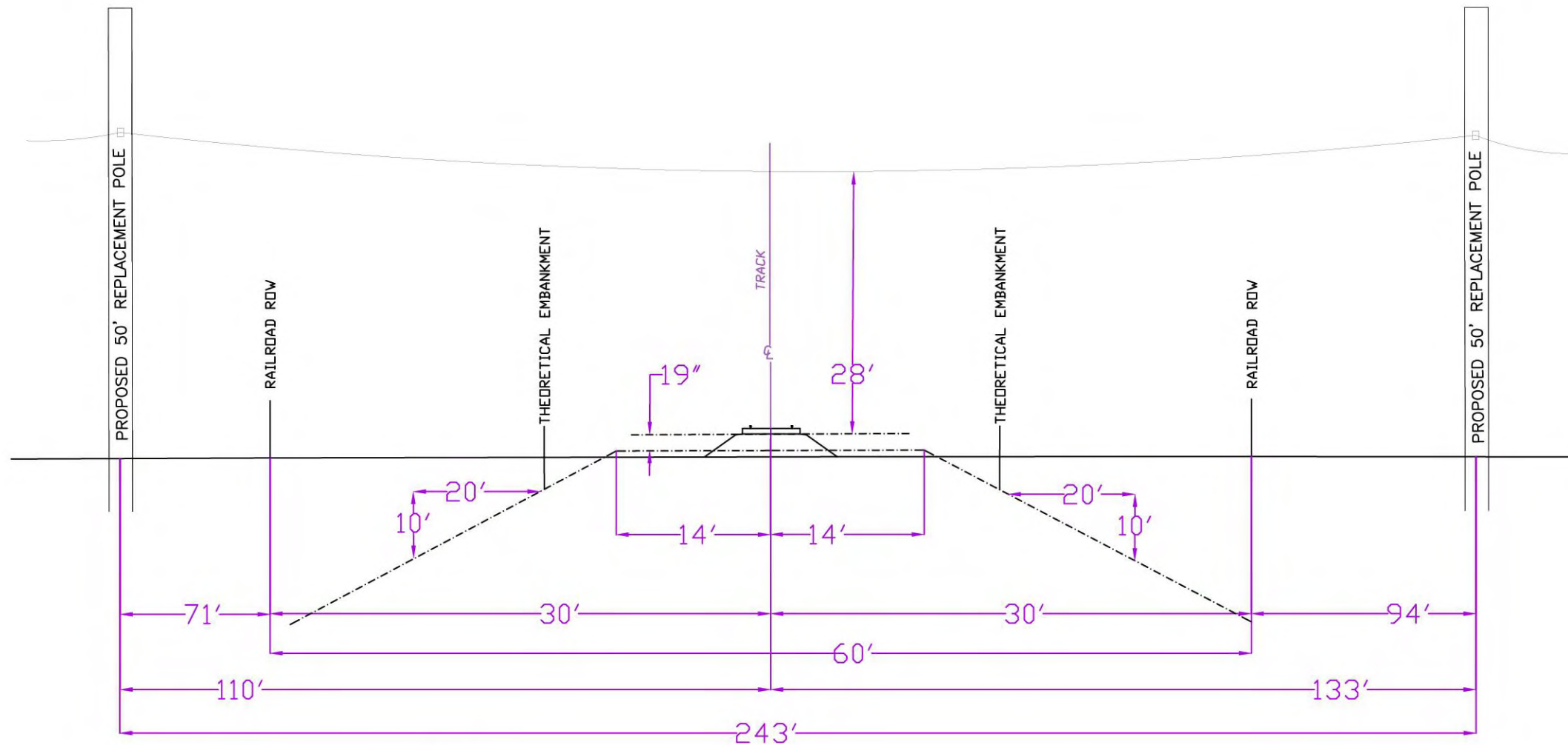
**LATITUDE: 40.612780°**  
**ACTUAL: 40.612753°**

**LONGITUDE: -76.934518°**  
**ACTUAL: -76.934508°**

**STATE: PENNSYLVANIA**

**COUNTY: NORTHUMBERLAND**

**CITY: LIVERPOOL**



**NOTES:**

A) ONCE WORK BEGINS, IT WILL BE CONTINUOUS UNTIL INSTALLATION IS COMPLETE.

B) UTILITY LOCATION SIGNS WILL BE PROVIDED IN ACCORDANCE WITH STANDARDS